

Coast Park Stage One

Semaphore Park to West Lakes Shore

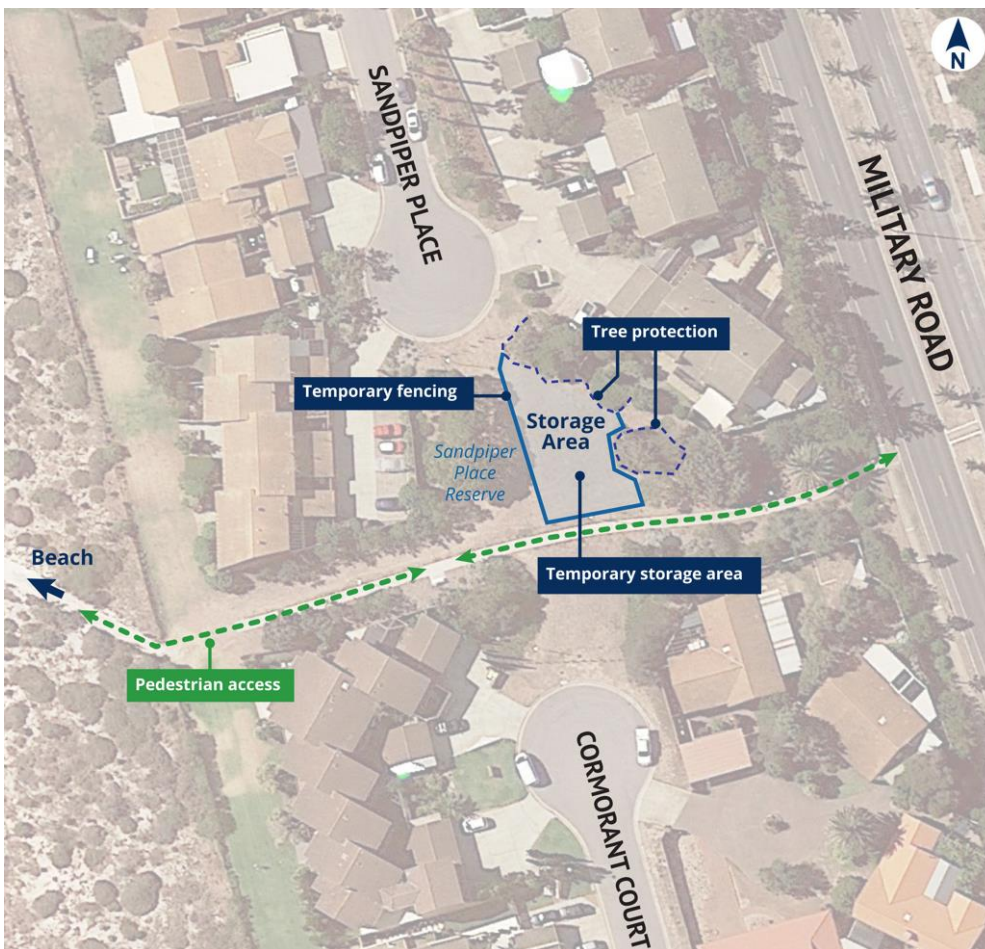
Temporary Storage Area Notification

The South Australian Government has announced the establishment of a Linear Park along Adelaide's metropolitan coastline between Semaphore Park and West Lakes Shore. This decision paves the way for a continuous shared-use path, similar to those seen along other sections of the coastline.

Coast Park Stage One incorporates a 1.3-kilometre Shared Use Path between Third Avenue Semaphore Park and Wara Wayingga-Tennyson Dunes Conservation Reserve.

The Department for Infrastructure and Transport (the Department) will be establishing a temporary storage area within the Sandpiper Place / Cormorant Court reserve from Monday, 18 September 2023. The area will be secured with temporary fencing and used to store construction materials, including paving and landscaping materials.

This area will be established outside the required tree protection zone. The grassed area will be reinstated upon completion of the project.



OFFICIAL

Work hours will continue to be between 7am and 5pm Monday to Friday and 8am to 2pm on Saturdays.

Traffic management will be onsite to escort any vehicle to the area, as required. Pedestrian access will be maintained through the reserve and to the beach.

The Department appreciates your patience and understanding while the works are undertaken.

Further information

Please call 1300 060 456, email dit.coastpark@sa.gov.au or visit: www.coastpark.sa.gov.au

With kind regards

Coast Park Project Engagement Team