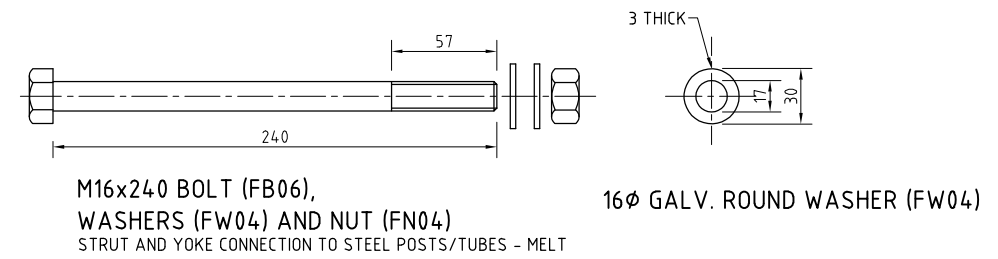
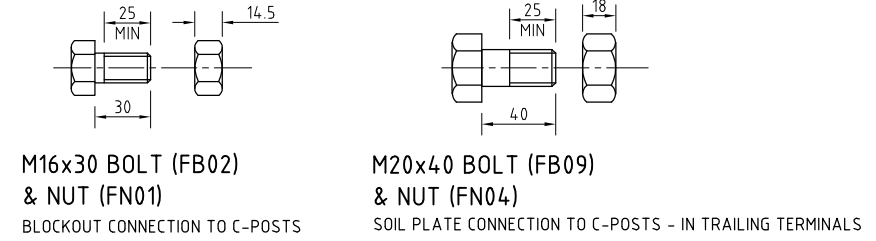
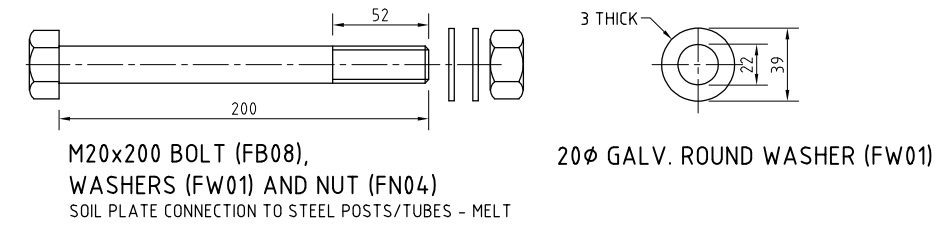
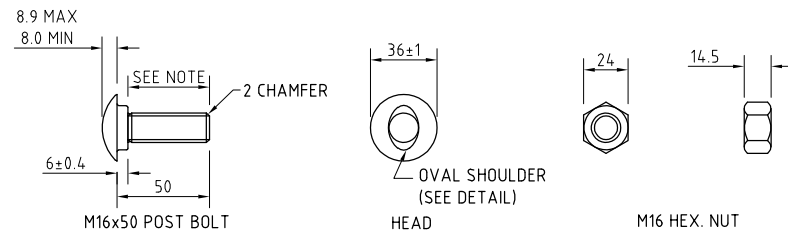


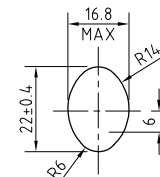
CABLE ASSEMBLY FASTENERS
SCALE 1:2



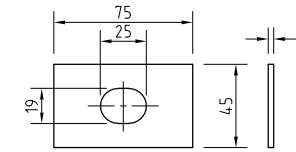
FASTENER COMPONENTS FOR POSTS
- HEXAGON HEAD BOLTS, NUTS AND WASHERS
SCALE 1:2



MUSHROOM HEAD POST BOLT (FB01) & NUT (FN01)
RAIL CONNECTION TO: BLOCKOUT, POST #1 IN MELT & END POST IN TRAILING TERMINAL

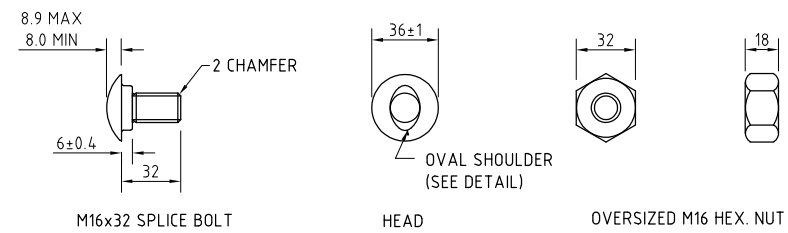


DETAIL OF BOLT SHOULDER
SCALE 1:1



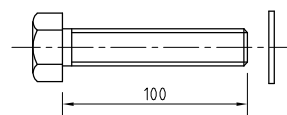
NOTE:
WASHER (FW03) TO BE USED ONLY IN CONNECTION OF RAIL TO FIRST POST OF TERMINALS, NOT ON MID SPAN LENGTHS OF RAIL.

RECTANGULAR WASHER (FW03)
SCALE 1:2



MUSHROOM HEAD SPLICE BOLT (FB03) AND OVERSIZED NUT (FN02)
RAIL CONNECTION: TO RAIL, ANCHOR BRACKET AND BUFFERED END
SHELF ANGLE CONNECTION: TO STEEL BLOCKOUT

M16 MUSHROOM HEAD BOLTS AND NUTS
SCALE 1:2



M20x100 HEXAGON HEAD SCREW (FB11) & WASHER (FW01)
FOR BASE PLATE (PP01) CONNECTION TO CONCRETE SURFACE

POST BASE PLATE HEXAGON HEAD SCREW
SCALE 1:2

| NOTES: | |
|--|--|
| GENERAL | |
| 1. POST BOLTS FB01 TO HAVE PHYSICAL PROPERTIES IN ACCORDANCE WITH AS/NZS 1111 (GRADE 4.6). HEXAGON NUT FN01 TO AS 1112.1. SPLICE BOLT FB03 AND NUT FN02 TO HAVE PHYSICAL PROPERTIES IN ACCORDANCE WITH AS/NZS 1252 (CLASS 8.8). NUTS SHALL BE TAPPED TO SUIT GALVANISED THREADS. THE LENGTH OF THREAD ON MUSHROOM HEADED BOLTS FB01 & FB03 TO BE SUCH THAT THE NUT SHALL TOUCH THE OVAL SHOULDER WHEN TIGHTENED BY HAND. | |
| 2. HEXAGON BOLTS AND SCREWS TO AS/NZS 1111 (GRADE 4.6). | |
| 3. HEXAGON NUTS TO AS 1112 (GRADE 5). NUTS SHALL BE TAPPED TO SUIT GALVANISED THREADS. | |
| 4. STEEL WASHERS, LARGE SERIES TO AS 1237. | |
| 5. ALL BOLTS, NUTS, SCREWS AND WASHERS TO BE TREATED TO AS 1627 AND SHALL BE HOT DIP GALVANISED IN ACCORDANCE WITH THE REQUIREMENTS OF AS 1214. | |
| 6. CABLE ASSEMBLY: | |
| 6.1 CABLE TO BE MINIMUM 20 DIA. 6X19 OR 6X25 WIRE STRAND CORE OR INDEPENDANT WIRE ROPE CORE, GALVANISED, RIGHT REGULAR LAY TO AS 3569. | |
| 6.2 CABLE SHALL BE SUPPLIED WITH TWO 36 THICK M24 HEXAGON GALVANISED STEEL NUTS AND TWO 5 THICK GALVANISED STEEL WASHERS. | |
| 7. TIGHTENING OF NUTS: NUT FN05 TO CABLE ASSEMBLY TO BE TIGHTENED SO THAT THERE IS NO SLACK IN THE CABLE. ALL OTHER NUTS SHALL BE SNUG TIGHT TO AS 4100. | |
| 8. DIMENSIONS ARE SUBJECT TO MANUFACTURER'S TOLERANCES EXCEPT WHERE ALLOWABLE TOLERANCES ARE NOMINATED. | |

| No. | AMENDMENT DESCRIPTION | BY | CHECK | ACCEPTANCE | DATE |
|-----|--------------------------|----|-------|-------------|----------|
| 1 | TITLE BLOCK UPDATE | DU | PM | P MOLLOY | 27/05/21 |
| 2 | M16 NUT & NOTE 1 UPDATED | AP | PM | A NOBBS | 29/9/11 |
| 3 | IDENTIFIER ADDED | AP | PD | G W CHAPLIN | 4/8/05 |
| 4 | SUPERSEDE NOTE ADDED | AP | PD | G W CHAPLIN | 27/6/05 |

△ SUPERSEDES DRG S-4050 SHEETS 29-35

FILE

4/04/2022 3:16:38 PM

| | | |
|--|---------------|-----------------|
| DESIGNED | QUALIFICATION | DATE: DDMM/YYYY |
| REVIEWER | QUALIFICATION | DATE: DDMM/YYYY |
| INDEPENDENT DESIGN CERTIFIER (IF REQUIRED) | QUALIFICATION | DATE: DDMM/YYYY |



Government of South Australia

Department for Infrastructure and Transport

STANDARD DRAWING
STEEL BEAM GUARDFENCE

BOLTS, NUTS, SCREWS, WASHERS & CABLE ASSEMBLY

| | | | | | | |
|----------------|----------------|--------------------------------|---------------------------|-----------------|------------|------------|
| DESIGNED: A.P. | DRAFTED: DIT | ACCEPTED FOR USE: G.W. CHAPLIN | ACCEPTANCE FORM KNET No.: | DRAWING No.: | SHEET No.: | AMEND No.: |
| CHECKED: A.P. | REVIEWED: A.N. | DATE: 06/08/2004 | | S - 4050 | 47 | 4 |
| | | | LATITUDE: | LONGITUDE: | | |