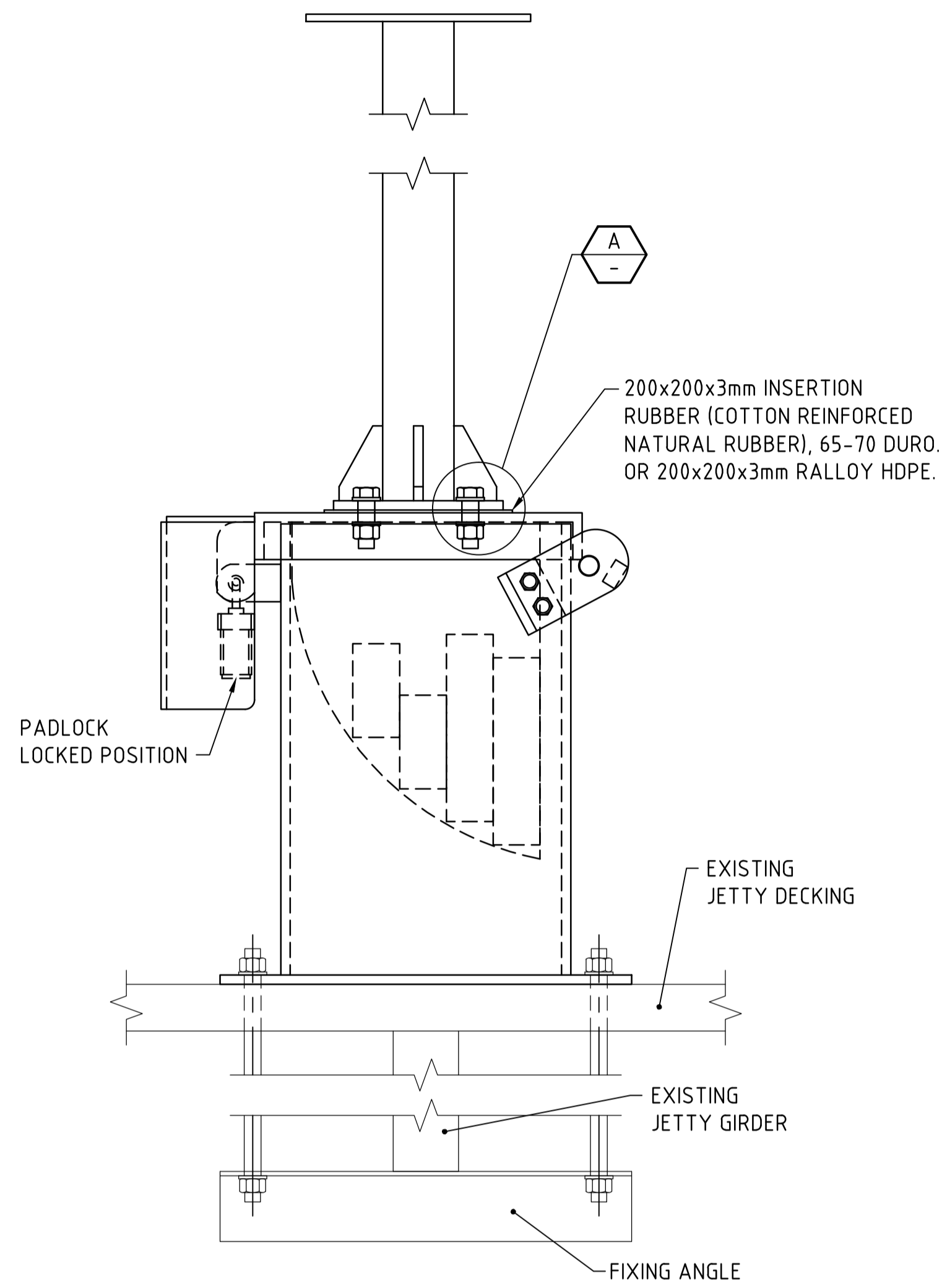
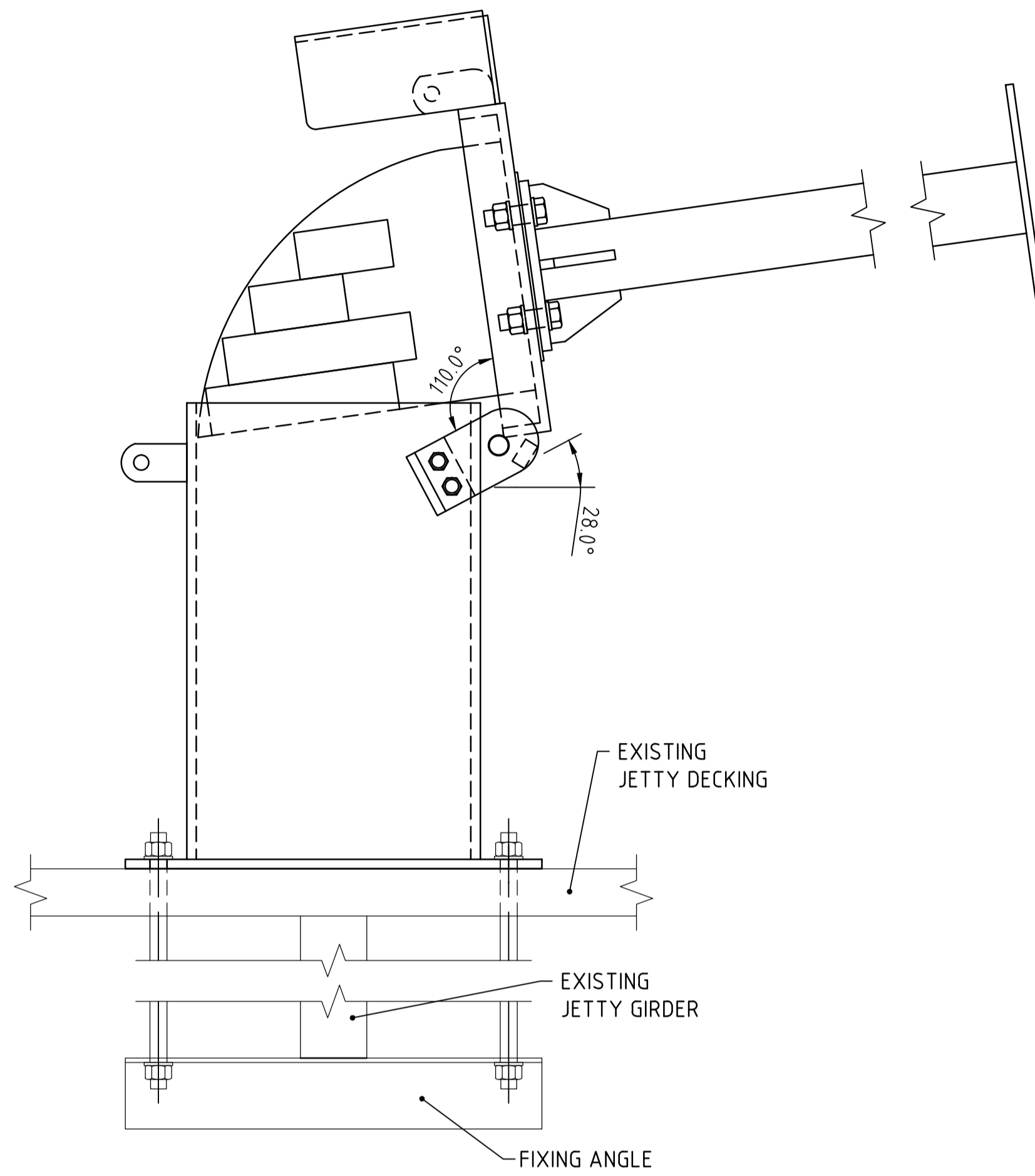


FILE: H:\04 - STANDARDS\MARINE FACILITIES\6977\6977_SHTS_12_TO_13_AWD_1.dwg



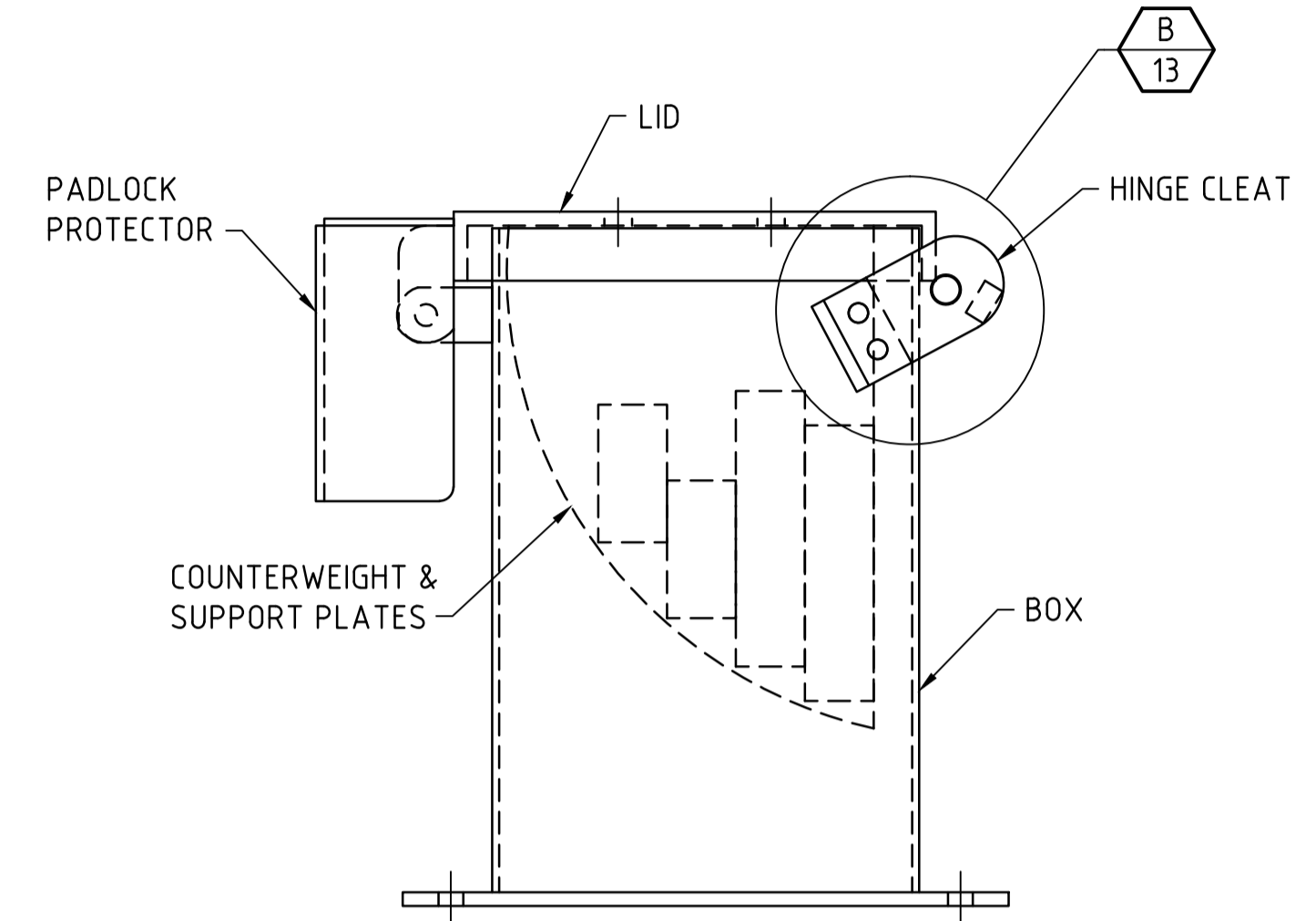
NOTE: JETTY SHOWN INDICATIVELY

△ FULLY CLOSED POSITION
SCALE 1:5



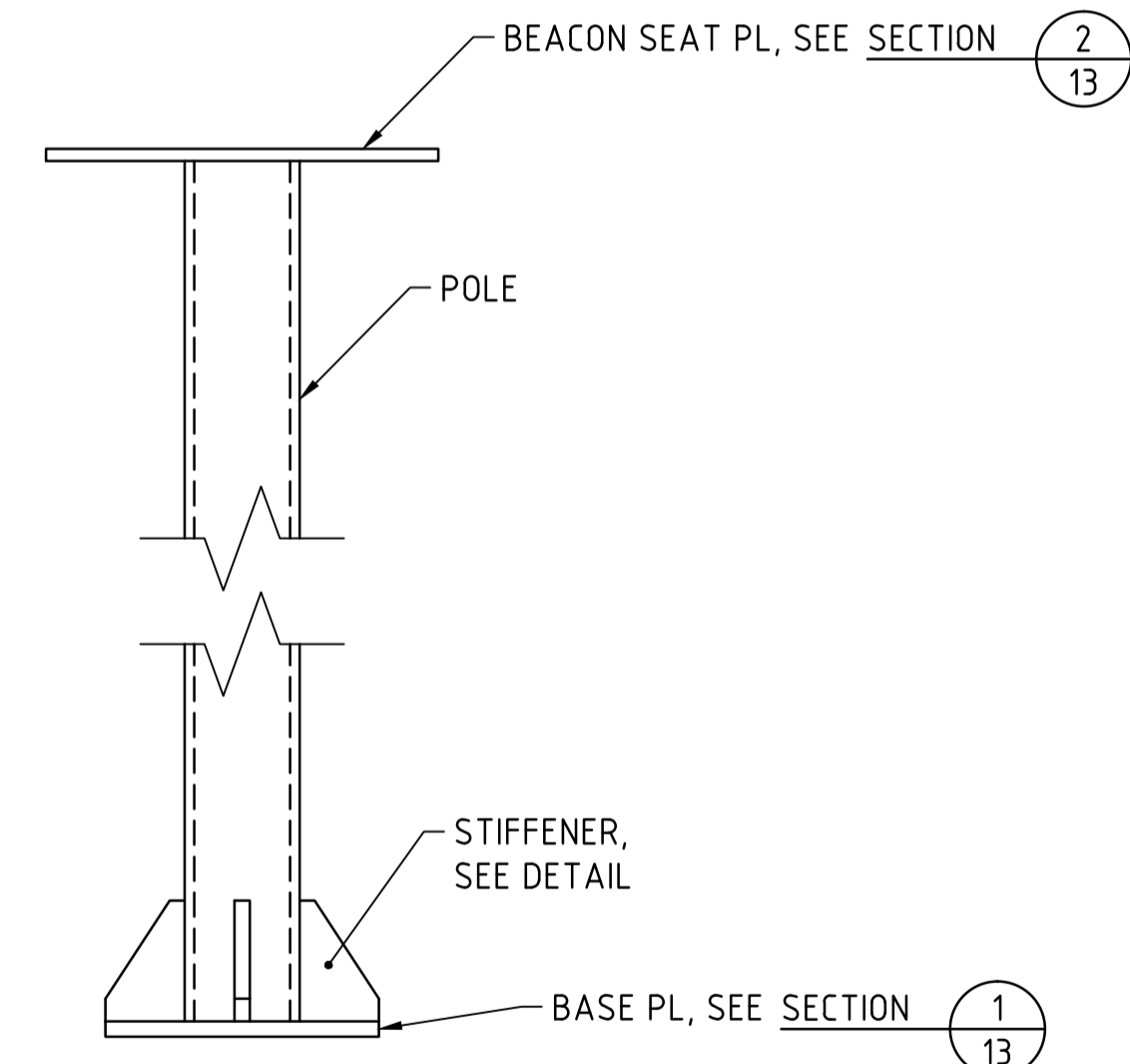
NOTE: JETTY SHOWN INDICATIVELY

△ FULLY OPEN POSITION
SCALE 1:5



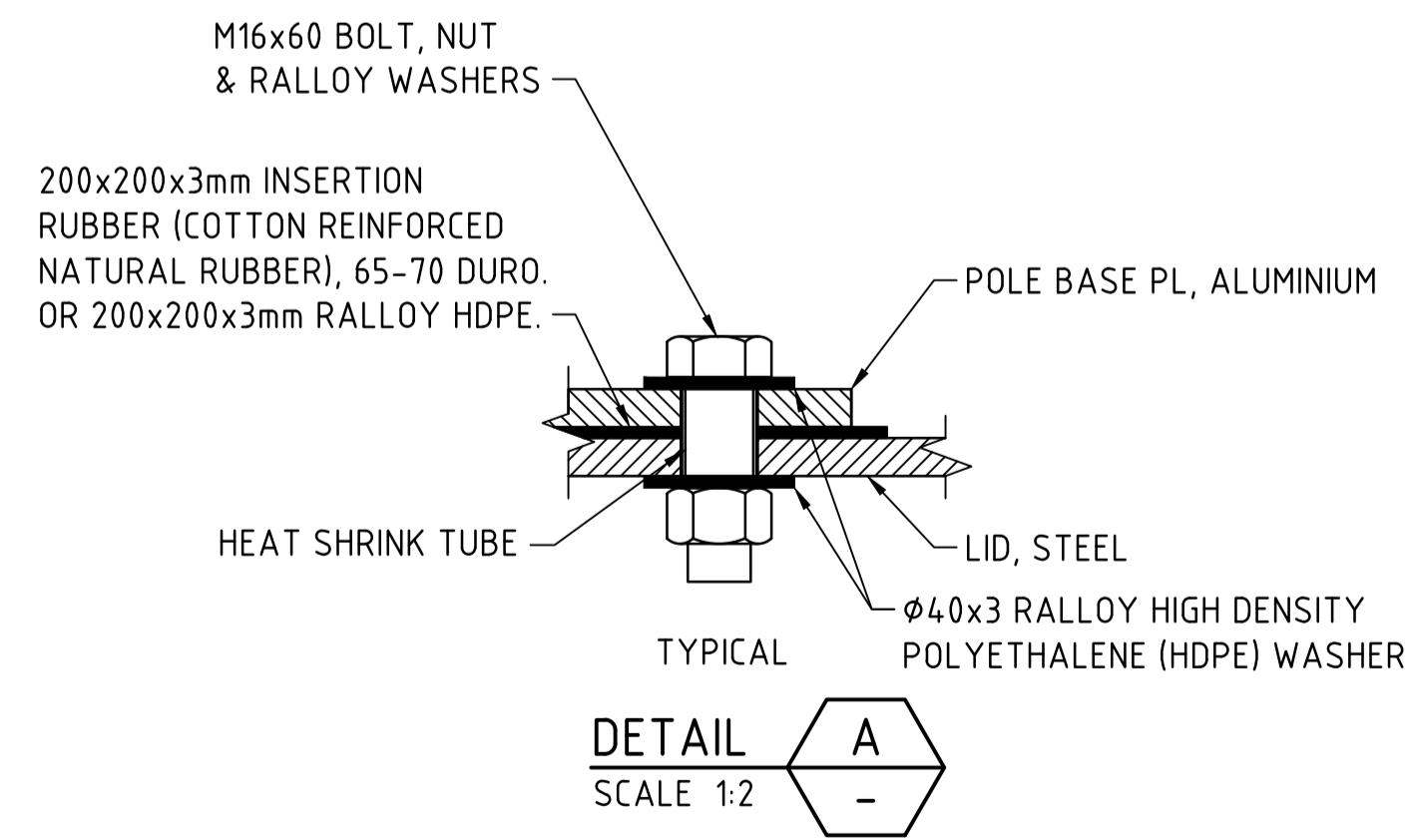
NOTE: ALL COMPONENTS OF BASE ASSEMBLY TO BE STEEL

△ BASE ASSEMBLY
SCALE 1:5



NOTE: ALL COMPONENTS OF POLE ASSEMBLY TO BE ALUMINIUM

△ POLE ASSEMBLY
SCALE 1:5



DETAIL A
SCALE 1:2

NOTES

- GENERAL**
1. ALL COMPONENTS FOR BASE ASSEMBLY TO BE STEEL, GRADE 250 TO AS3678.
 2. ALL COMPONENTS FOR POLE ASSEMBLY TO BE ALUMINIUM, MARINE GRADE IN ACCORDANCE WITH AS/NZS 1664.
 3. ALL BOLTS TO BE STEEL, GRADE 4.6 (COMMERCIAL GRADE TO AS1111 & AS1112) AS NOTED. S DENOTES SNUG TIGHT TO AS4100.
 4. QUANTITIES SHOWN ARE FOR ONE ASSEMBLY.
 5. SEPARATE DISSIMILAR METALS BY USING CONCEALED LAYERS OF SUITABLE INERT MATERIALS OF SUITABLE THICKNESSES. USE PLASTIC SLEEVES & NYLON WASHERS FOR BOLTS.
- ALUMINIUM**
1. ALL WORKMANSHIP & MATERIALS TO COMPLY WITH AS/NZS 1664 (ALUMINIUM STRUCTURES) & AS/NZS 1665 (WELDING OF ALUMINIUM STRUCTURES).
 2. ALL COMPONENTS TO HAVE ALLOY 6061 & TEMPER T6.
 3. ALL WELDS SHALL BE 6mm CONTINUOUS FILLET WELDS, CATEGORY B, IN ACCORDANCE WITH AS/NZS 1665.
- STEEL**
1. ALL WORKMANSHIP & MATERIALS TO COMPLY WITH AS4100 (STEEL STRUCTURES) & AS1554 (WELDING CODE).
 2. ALL BOLTS, NUTS, WASHERS & ASSOCIATED FIXINGS SHALL BE HOT DIP GALVANIZED.
 3. ALL WELDS SHALL BE 6mm CATEGORY SP CONTINUOUS FILLET WELDS TO AS/NZS 1554.1 ALL ROUND, BOTH SIDES, UNLESS NOTED OTHERWISE.
 4. ALL COMPONENTS SHALL BE PICKLED, NEUTRALISED & HOT DIP GALVANIZED TO AS/NZS 4680 & AS1214. THICKNESS OF GALVANIZED COATINGS TO AS/NZS 4680.
 5. HOT DIP GALVANIZED COMPONENTS SHALL NOT BE PAINTED WITHOUT PRIOR WRITTEN APPROVAL OF THE STRUCTURAL ENGINEER.

<p>Government of South Australia</p> <p>Department for Transport, Energy and Infrastructure</p>	<p>STANDARD DRAWING</p> <p>MARINE NAVIGATION AIDS</p> <p>SMALL DROPDOWN POLE</p> <p>GENERAL ARRANGEMENT</p>	
	<p>DESIGNED: BVZ</p> <p>CHECKED: LY</p>	<p>DRAFTED: SA</p> <p>REVIEWED: PM</p>
<p>ACCEPTANCE FORM KNET No.: 8618985</p>	<p>DRAWING No.: S - 6977</p>	<p>SHEET No.: 12</p> <p>AMEND No.: 1</p>
<p>UNCONTROLLED COPY WHEN PRINTED</p>		

170 PCD CHANGED TO 200 PCD, BEACON SEAT PL INCR. TO Ø260, PADLOCK PROTECTOR & BOX/LID CLEAT ENLARGED	SA	DH	C. TRIANTAFILLOU	13/7/16	
No.	AMENDMENT DESCRIPTION	BY	CHECK	ACCEPTANCE	DATE

100 MILLIMETRES ON ORIGINAL DRAWING

ALL DIMENSIONS ARE IN MILLIMETRES UNLESS SHOWN OTHERWISE