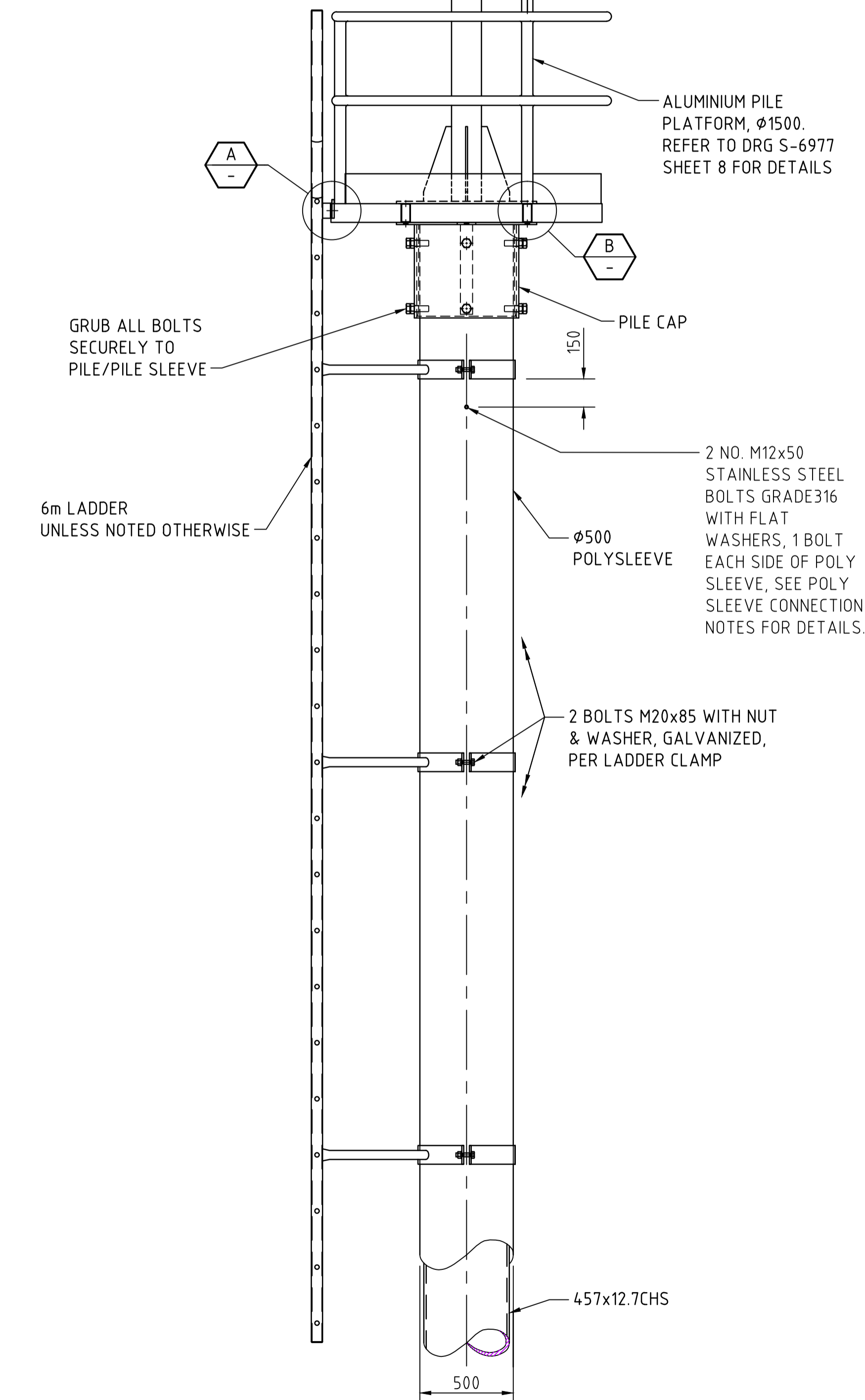


DAYMARK, REFER TO DRG S-6977 SHEET 7 FOR DETAILS



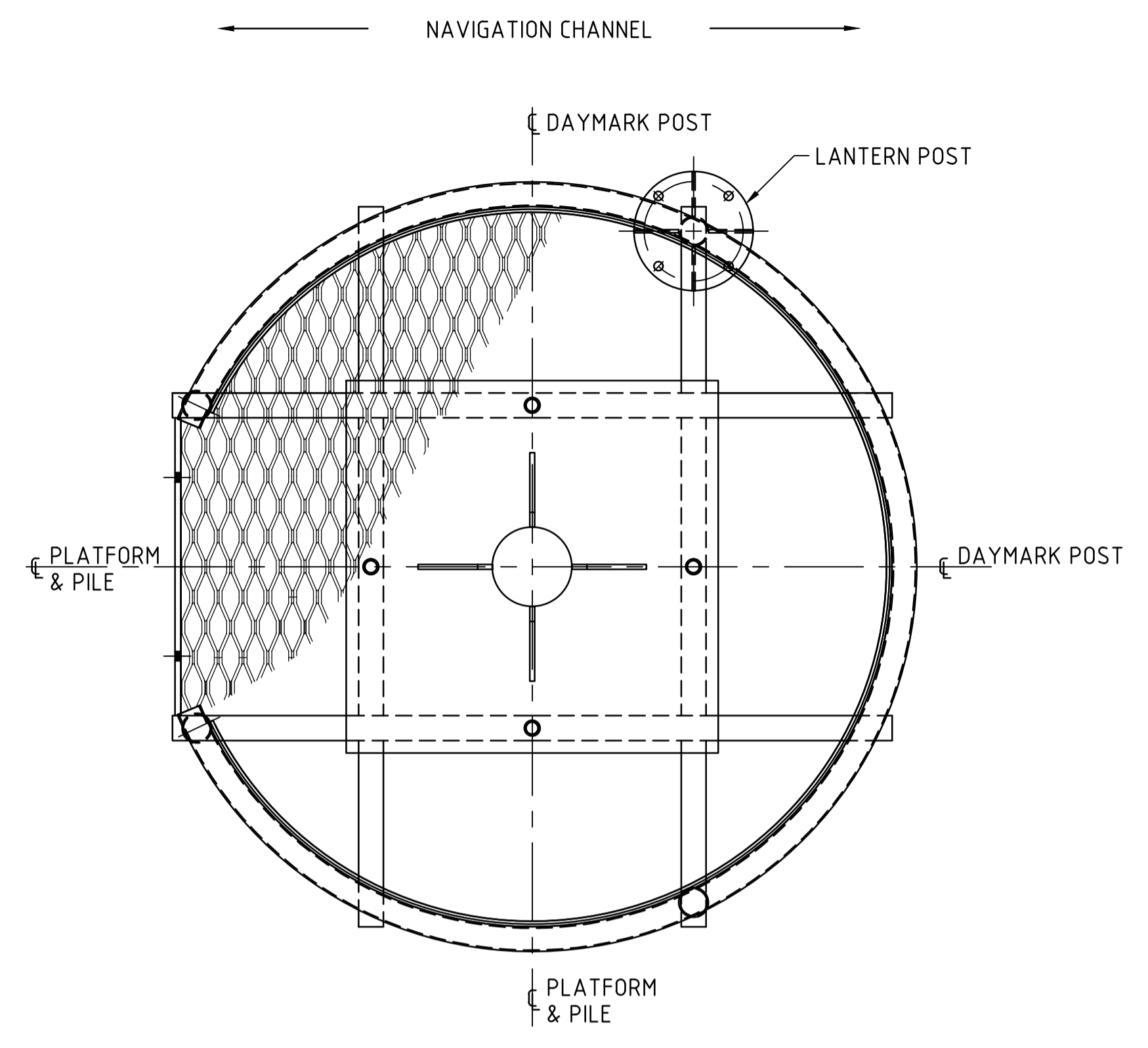
▲ PILE Ø457 ASSEMBLY
SCALE 1:20

DESCRIPTION	No.	Date	Resp	Examined	Approved for Exec Director	Date
BOLTS ADDED TO PILE, POLYSLEEVE NOTES	▲	10/10/16	SCA	G. UYTENHOVE	S. DIMAS	25/10/16
LANTERN POST HEIGHT INCREASED BY 200mm	▲	28/11/11	SCA	G. UYTENHOVE	C. TRIANTAFILLOU	13/7/16
GRATING ROTATED THROUGH 90°	▲	01/05/11	SCA	G. UYTENHOVE	S. DIMAS	25/5/11

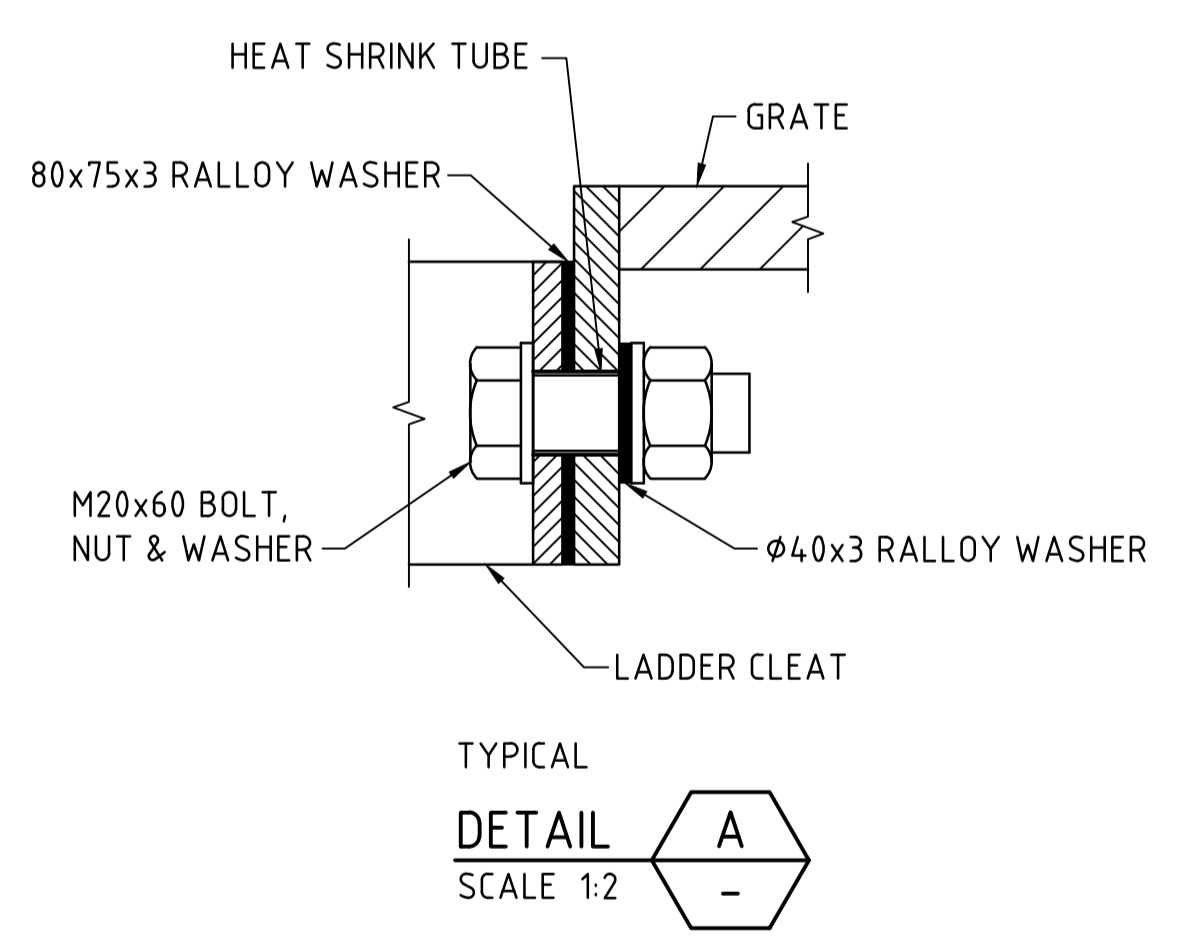
AMENDMENTS

100 MILLIMETRES ON ORIGINAL DRAWING

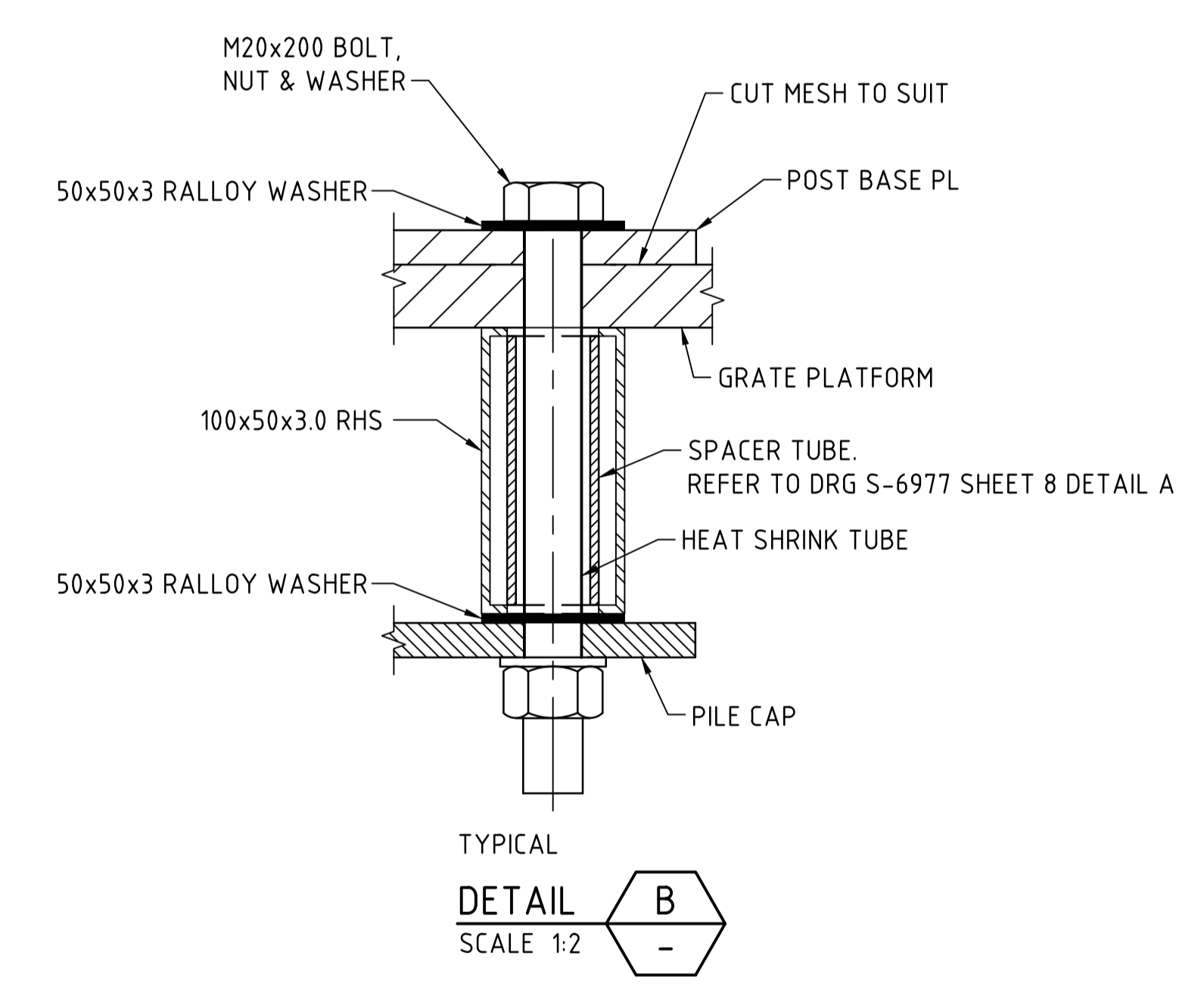
ALL DIMENSIONS ARE IN MILLIMETRES UNLESS SHOWN OTHERWISE



▲ PLAN ON PLATFORM
SCALE 1:10



TYPICAL
DETAIL A
SCALE 1:2



TYPICAL
DETAIL B
SCALE 1:2

- ▲ NOTES**
- GENERAL**
- ALL COMPONENTS TO BE ALUMINIUM, MARINE GRADE SERIES 5000 OR 6000, OR AS SPECIFIED OTHERWISE. POLY SLEEVE TO PILE CONNECTION
 - DRILL A Ø10.5 HOLE THROUGH POLY SLEEVE INTO STEEL 150mm BELOW TOP LADDER CLAMP.
 - TAP A 12mm THREAD INTO STEEL PILE.
 - SCREW IN M12x50 (316 GRADE) STAINLESS STEEL BOLTS WITH FLAT WASHERS.
 - SEAL SCREW AND WASHER WITH SILICON BEFORE AND AFTER INSERTION OF BOLTS.

DESIGN OTHERS	ENDORSED
DRAWN S ARENS	
CHECKED G. UYTENHOVE	APPROVED S. DIMAS for Executive Director Date: 02/02/10
EXAMINED M. COONEY Unit Head	CONSTRUCTED AS FOR SHEET 1 Title: Date:
ENDORSED S. DIMAS Manager, Marine Facilities	

STANDARD DRAWING
MARINE NAVIGATIONAL AIDS
MAJOR CHANNEL MARKER ASSEMBLY FOR
1500mm Ø PILE PLATFORM

AMEND 3 SHEET 9 DRG S - 6977

DEPARTMENT for TRANSPORT, ENERGY and INFRASTRUCTURE

PAVEMENTS and STRUCTURES SECTION