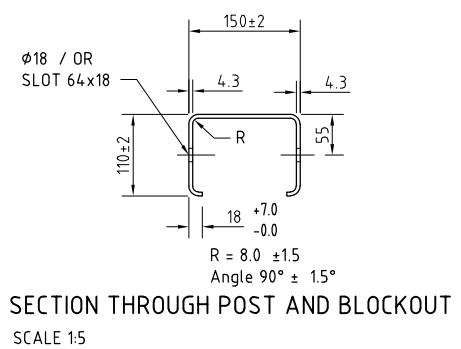
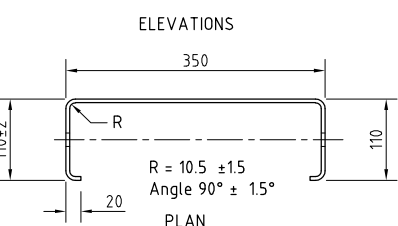
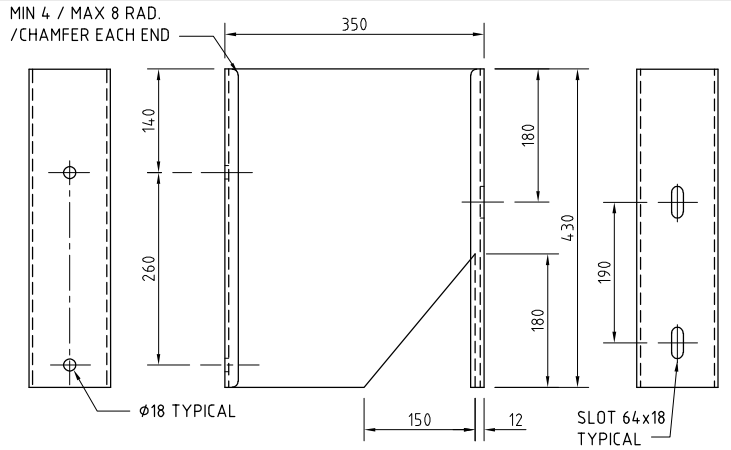


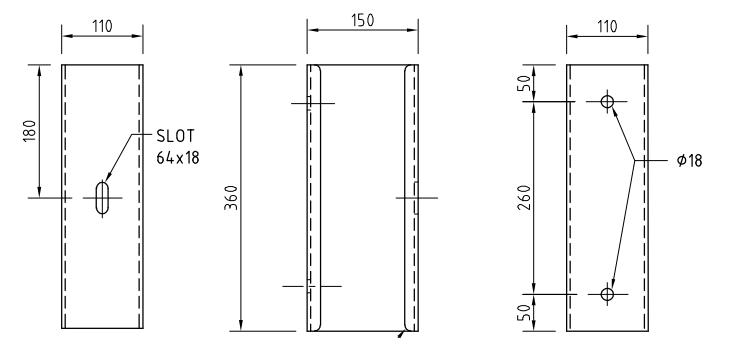
\* OR LONGER AS NECESSARY  
ELEVATIONS  
POST - W BEAM (P001)  
- THRIE (P003)



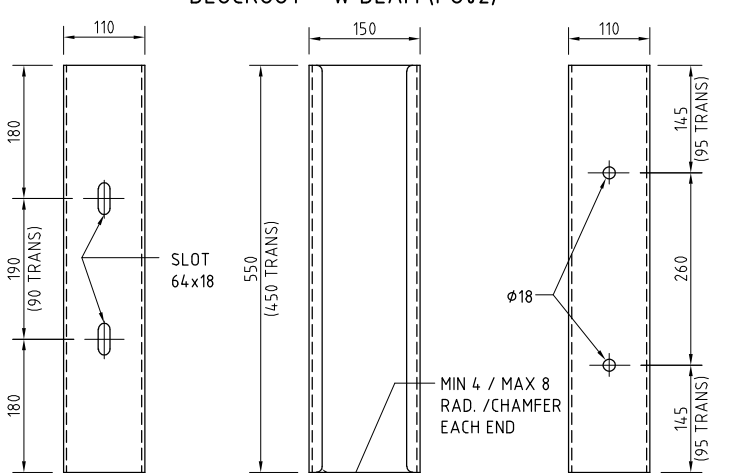
SECTION THROUGH POST AND BLOCKOUT  
SCALE 1:5



NOTE:  
RIGHT-HAND AND LEFT-HAND NOTCH REQUIRED  
MODIFIED BLOCKOUT - THRIE BEAM (P006/P007)  
SCALE 1:5

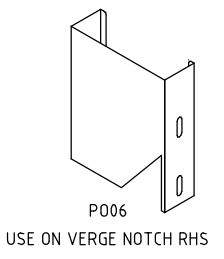


ELEVATIONS  
BLOCKOUT - W BEAM (P002)

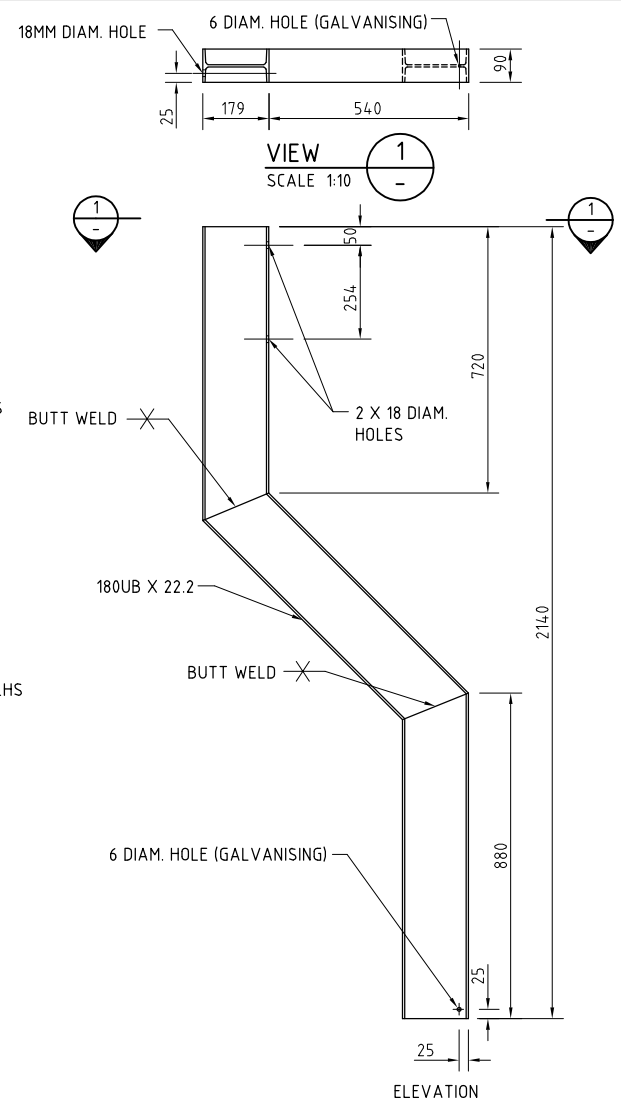


BLOCKOUT - THRIE BEAM (P004)  
- TRANSITION W/THRIE BEAM (P005)  
DIMENSIONS FOR TRANSITION BLOCKOUT P005 SHOWN IN BRACKETS  
TRANSITION BLOCKOUT P005 TO BE USED WITH POST P001

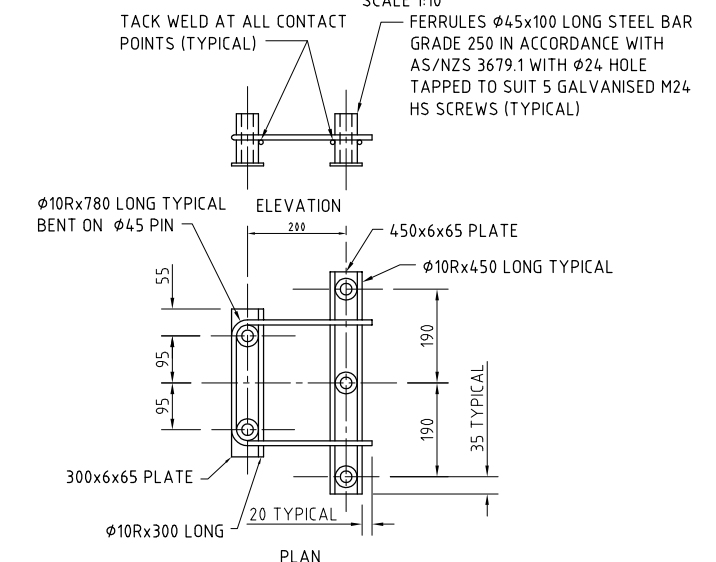
▲ SUPERSEDES DRG S-4050 SHEETS 29-35



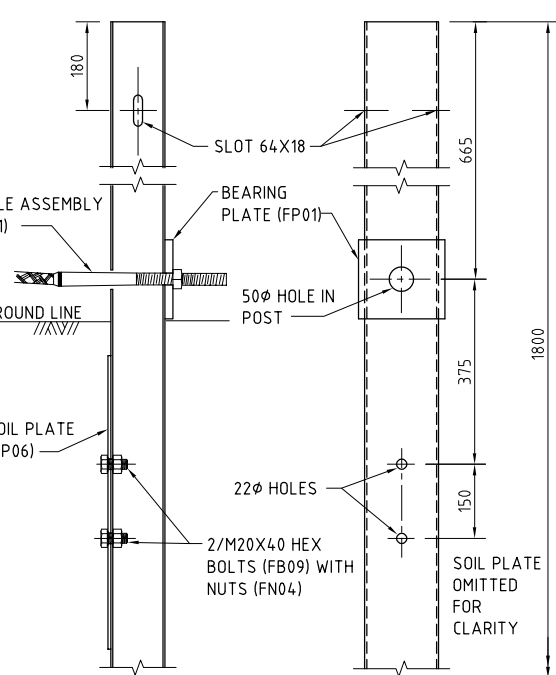
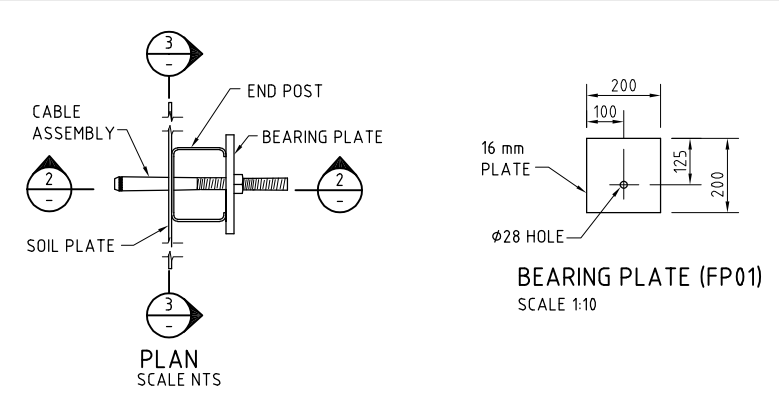
P006  
USE ON VERGE NOTCH RHS  
P007  
USE ON MEDIAN NOTCH LHS  
ISOMETRIC VIEWS



G11 - CRANKED POST (SEE NOTE 9) ▲  
SCALE 1:10



CAST-IN ANCHOR ASSEMBLY (FC02) FOR THRIE-BEAM  
SCALE NTS



VIEW 2 SCALE 1:10  
VIEW 3 SCALE 1:10  
STEEL END POST (P015) - TRAILING TERMINAL

- NOTES**
- PUBLIC DOMAIN PRODUCTS TO BE USED ONLY TO MAINTAIN EXISTING INSTALLATIONS.
  - GENERAL**
  - W/THRIE BEAM POSTS ARE FROM 4.3 BMT PLATE GRADE HA300 IN ACCORDANCE WITH AS/NZS 1594.
  - CRANKED POSTS FABRICATED FROM UNIVERSAL COLUMNS (UC) TO BE GRADE 300 STEEL TO AS 3670 WELDED IN ACCORDANCE WITH AS/NZS 1554.1.
  - BLOCKOUTS ARE FROM STEEL GRADE HU300 IN ACCORDANCE WITH AS/NZS 1594, MODIFIED THRIE BEAM BLOCKOUT FROM 6 BMT PLATE AND ALL OTHER BLOCKOUTS FROM 4.3 BMT PLATE. BMT = BASE METAL THICKNESS.
  - SOIL PLATES SHALL BE FABRICATED FROM STEEL GRADE 250 IN ACCORDANCE WITH AS/NZS 1594.
  - BEARING PLATES SHALL BE FABRICATED FROM STEEL GRADE HA250 IN ACCORDANCE WITH AS/NZS 3678.
  - POSTS, BLOCKOUTS AND PLATES TREATED TO AS 1627 AND HOT DIP GALVANISED TO AS/NZS 4680 AFTER FABRICATION.
  - TIGHTENING OF NUTS: NUT FN05 TO CABLE ASSEMBLY TO BE TIGHTENED SO THAT THERE IS NO SLACK IN THE CABLE. ALL OTHER NUTS SHALL BE SNUG TIGHT TO AS 4100.
  - DIMENSIONS ARE SUBJECT TO MANUFACTURER'S TOLERANCES EXCEPT WHERE ALLOWABLE TOLERANCES ARE NOMINATED.
  - CRANKED POST TO BE USED ONLY TO MAINTAIN EXISTING INSTALLATIONS.

No.	AMENDMENT DESCRIPTION	BY	CHECK	ACCEPTANCE	DATE
▲	TITLE BLOCK UPDATE, NOTE ADDED, POST LENGTH MODIFIED	DU	PM	PM	27/05/21
▲	CRANKED POST & BLOCKOUT DETAILS CHANGED	AP	PM	PM	27/12/13
▲	NOTES MODIFIED	AP	PM	PM	20/6/11
▲	NOTE ADDED	AP	PM	PD	5/6/06
▲	IDENTIFIER ADDED	AP	PD	GW	4/8/05
▲	SUPERSEDE NOTE ADDED	AP	PD	GW	27/6/05

4/04/2022 3:16:08 PM

100 MILLIMETRES ON ORIGINAL A1 DRAWING

DESIGNED	
QUALIFICATION DATE:	DDMM/YYYY
REVIEWER	
QUALIFICATION DATE:	DDMM/YYYY
INDEPENDENT DESIGN CERTIFIER (IF REQUIRED)	
QUALIFICATION DATE:	DDMM/YYYY
UNCONTROLLED COPY WHEN PRINTED	

Government of South Australia  
Department for Infrastructure and Transport

DESIGNED: A.P.		DRAFTED: DIT		ACCEPTED FOR USE: G.W. CHAPLIN		ACCEPTANCE FORM KNET No.:		DRAWING No.:		SHEET No.:		AMEND No.:	
CHECKED: A.P.		REVIEWED: A.N.		DATE: 06/08/2004				S - 4050		46		6	
								LATITUDE:		LONGITUDE:			

STANDARD DRAWING  
STEEL BEAM GUARDFENCE  
POSTS, BLOCKOUTS AND ANCHOR ASSEMBLY