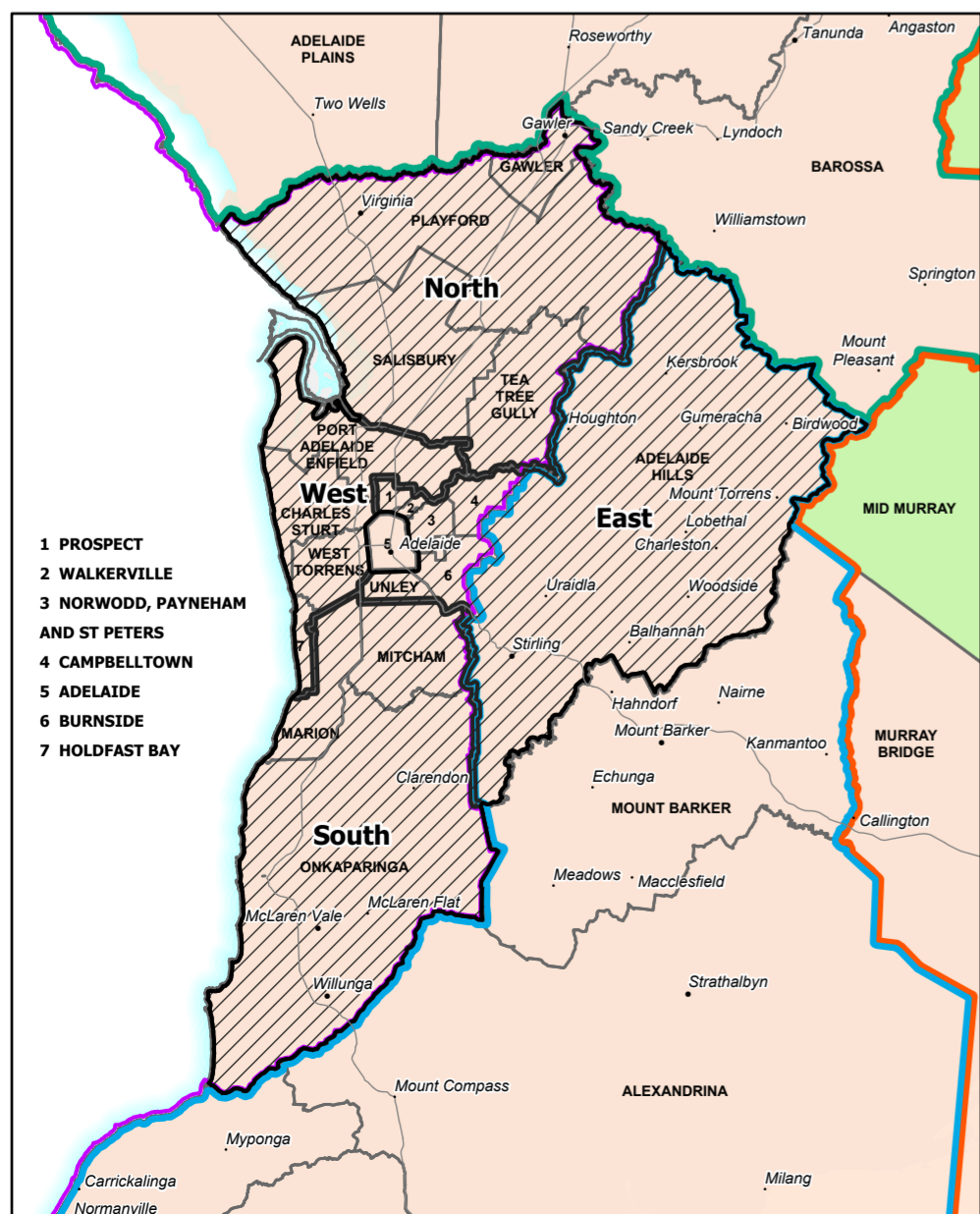


Produced by Department for Trade and Investment
 Planning Land Use Services
 Analytics & Forecasting

Projection Lambert Conformal Conic
 Compiled August 2022

© Government of South Australia 2022
 No part of this document may be reproduced, stored in a retrieval system, or transmitted in any form, or by any means, without the prior written permission of the publisher, Department of Planning, Transport and Infrastructure.

While every reasonable effort has been made to ensure that this document is correct at the time of publication, the State of South Australia and its agencies, instrumentalities, employees and contractors disclaim any and all liability to any person in respect to anything or the consequence of anything done or omitted to be done in reliance upon the whole or any part of this document.



South Australian Planning Regions and Regional Organisation of Councils

- Planning Regions 2022
- Greater Adelaide
- Murray and Mallee
- Eyre and Western
- Far North
- Yorke Peninsula and Mid North
- Kangaroo Island
- Limestone Coast
- Greater Adelaide / Murray and Mallee overlap
- Local government boundary
- Greater Adelaide Regional Organisation of Councils
- SA Regional Organisation of Councils
- Regional LGA groups
- Eyre Peninsula Local Government Association
- Legatus Group
- Limestone Coast Local Government Association
- Murraylands and Riverland Local Government Association
- Southern and Hills Local Government Association
- Spencer Gulf Cities

