

STEEL BRACING ARRANGEMENT
SCALE 1:25

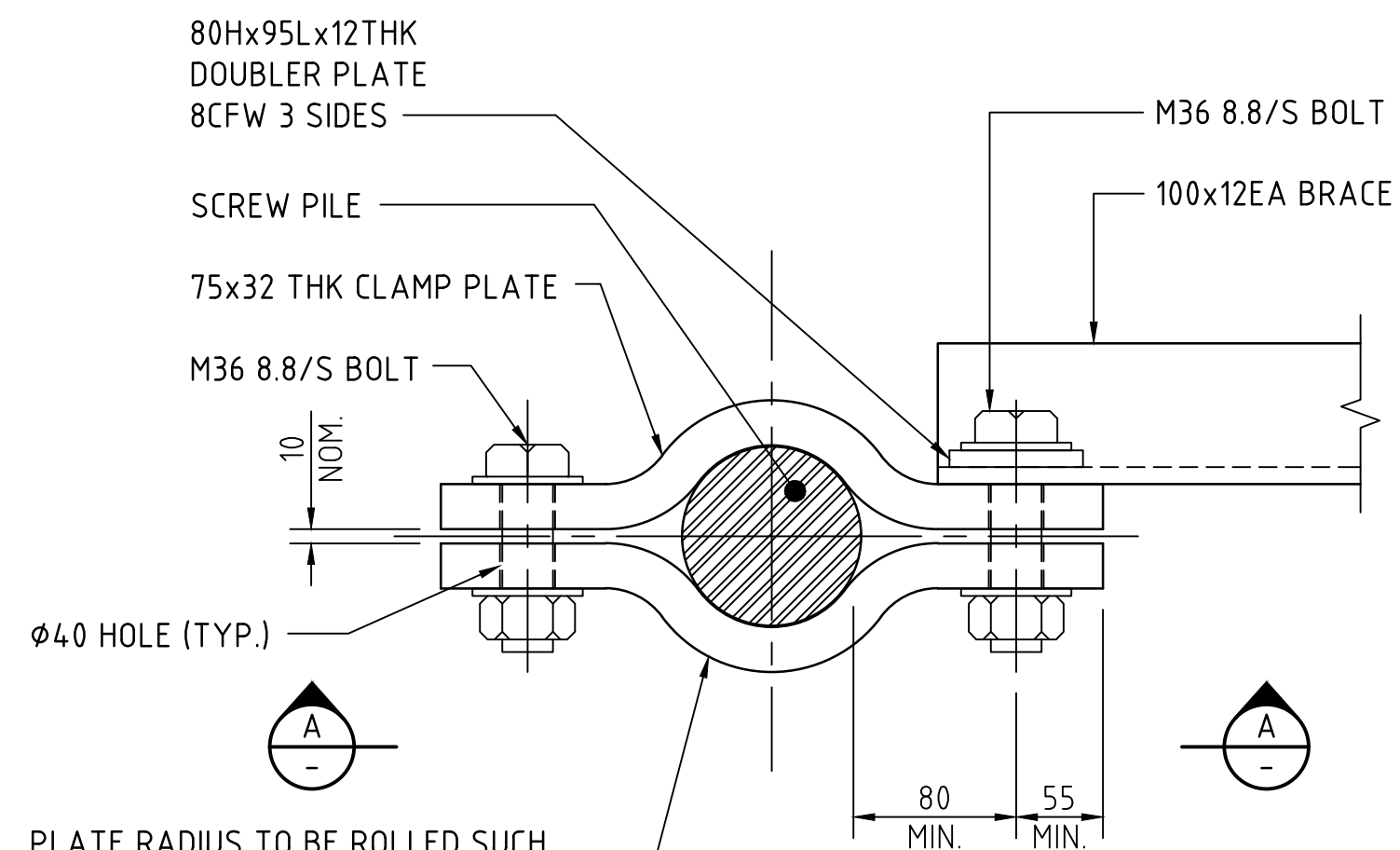
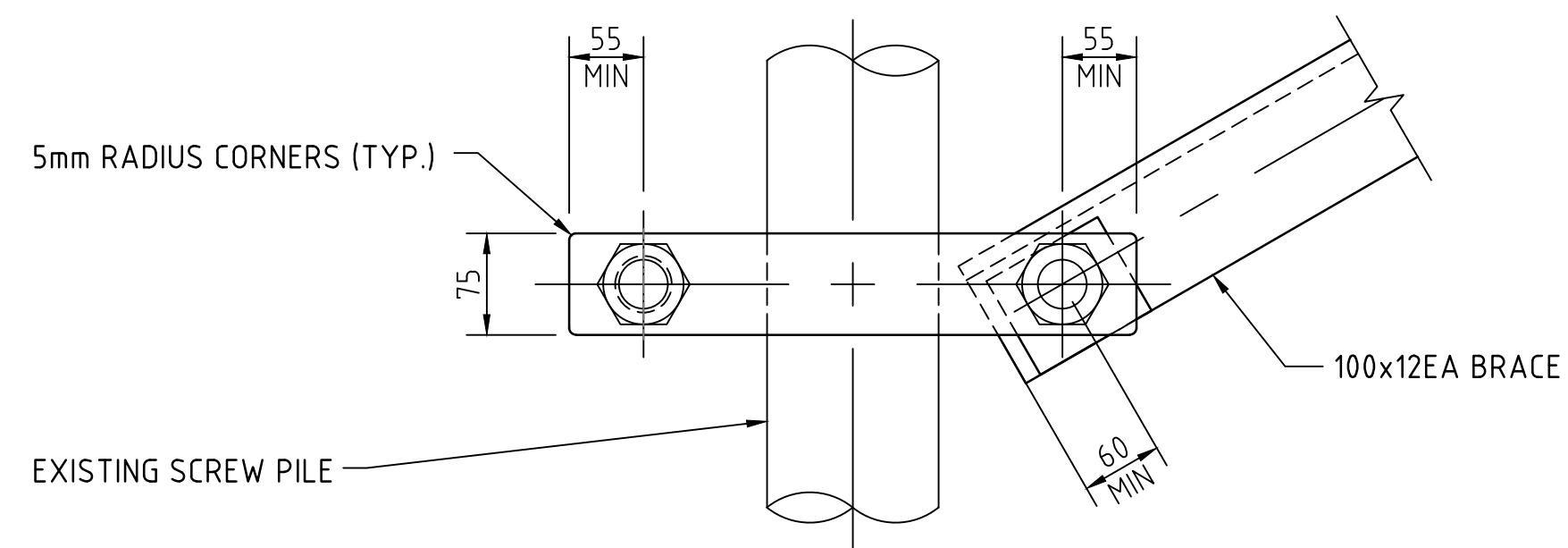


PLATE RADIUS TO BE ROLLED SUCH THAT CLAMP IS TIGHT AGAINST PILE. CONTRACTOR TO SITE MEASURE SCREW PILE TO DETERMINE REQUIRED PLATE LENGTH AND ROLLING RADIUS

CLAMP DETAIL
SCALE 1:5



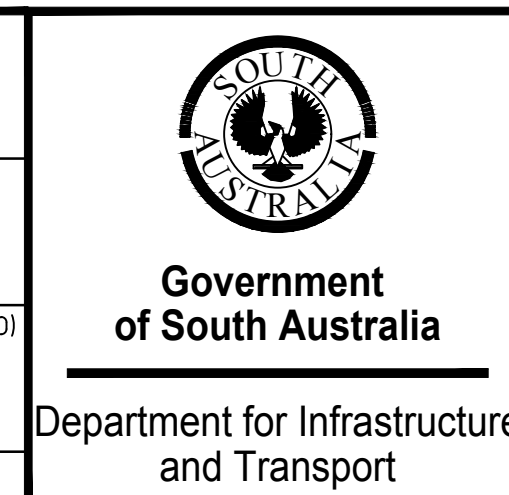
SECTION A-A
SCALE 1:5

NOTES:

1. ALL CARBON STEEL PLATEWORK TO BE GRADE 250 TO AS3678 AND HOT ROLLED SECTIONS GRADE 300 TO AS3679.1. ANY STEELWORK SOURCED FROM MILLS LOCATED OUTSIDE AUSTRALIA ARE TO BE PROVIDED WITH CERTIFICATES PROVIDING REQUIREMENTS VERIFIED BY NATA REGISTERED ORGANISATIONS.
2. NOTES AND DRAWINGS TO READ IN CONJUNCTION WITH THE DIT TIMBER JETTY WORKS MASTER SPECIFICATION AND ALL STANDARDS / SPECIFICATIONS REFERENCE WITH THE DOCUMENT.
3. ALL CARBON STEELWORK PAINTING SPECIFICATION TO BE INTERZONE 954 TO A MINIMUM THICKNESS OF 700 MICRONS IN 2x350 MICRONS COATS.
4. PAINTING & PAINTING REPAIR TO BE IN ACCORDANCE WITH DIT MASTER SPECIFICATION ST-SS-S2.
5. ALL WELDING TO BE SP CATEGORY USING E48XX ELECTRODES AND CONFORM WITH THE REQUIREMENTS OF AS1554, AS4100 OR AWS D1.1 U.N.O.
6. ALL BOLTS TO BE GRADE 8.8/S IN ACCORDANCE WITH AS/NZS1252 AND, INCLUDING NUTS AND WASHERS BE HOT DIPPED GALVANISED IN ACCORDANCE WITH AS/NZS4680 AND AS1214.
7. PROVIDE AT LEAST ONE WASHER UNDER THE NUT IN ALL SITUATIONS.
8. ALL BOLTS SHOULD HAVE AT LEAST ONE FULL THREAD EXPOSED BEYOND THE NUT AFTER TIGHTENING.
9. THE DIMENSIONS SHOWN ON THE BRACING ARRANGEMENT AND CLAMP DETAIL ARE APPROXIMATE ONLY. IT IS THE CONTRACTOR'S RESPONSIBILITY TO SITE MEASURE EACH BENT REQUIRING REMEDIAL WORKS TO DETERMINE THE FOLLOWING;
 - LOCATION OF CLAMPS
 - LENGTH OF BRACING
 - LENGTH OF BOLTS AND FIXINGS
 - LENGTH AND ROLL RADIUS OF CLAMP PLATES



DESIGNED	WGA
QUALIFICATION DATE:	
REVIEWER	DIT
QUALIFICATION DATE:	
INDEPENDENT DESIGN CERTIFIER (IF REQUIRED)	
QUALIFICATION DATE:	



DESIGNED		STANDARD DRAWINGS	
WGA		JETTY CONSTRUCTION	
STEEL BRACING CONNECTION TO SCREW PILE DETAILS			
DESIGNED: WGA	DRAFTED: WGA	ACCEPTED FOR USE: L.MASE	ACCEPTANCE FORM KNET No.:
CHECKED: AJO	REVIEWED: DIT	DATE: 22/09/2023	DRAWING No.: S-6997
		SHEET No.: 10	
		AMEND No.: 2	
		LATITUDE: LONGITUDE:	

FILE: V:\2020\202200 - 202299\202246 - DIT - 2020-21 Jetty Remediation Projects\Drafting\Typ\DIT Jetty Construction Details\S-6997-10_2.dwg

2	ISSUED FOR USE	WGA	WGA	L.MASE	22.09.23
1	PRELIMINARY ISSUE	WGA	WGA		17.03.23

PRELIMINARY DRAWING
NOT FOR CONSTRUCTION