

# Commercial Road, Salisbury

## Works Update

General works are required to remediate sections of Commercial Road, Salisbury, to enhance the road surface and improve safety for all road users.

### What's happening:

General maintenance activities, including asphalt patching and kerbing works, **will now commence on Commercial Road, between Ann Street and Park Terrace, from Monday 3 June 2024.** Working hours have been updated, please refer to hours of operation.

### How this affects you:

To keep everyone safe while we undertake these works, speed and lane restrictions will be required. Please follow onsite traffic signage and follow the direction of traffic controllers while works are in progress. Pedestrians and cyclists might also need to use a different path during the works; however, signs will show you where to go.

During the works, there will be some noisy disruptions from time to time, but we'll do our best to keep the noise to a minimum. You might also notice some odours, which is normal during asphalt work.

Bus stops in the area may be affected for a short time. Please pay attention to the signs at the bus stops and check the latest updates at [adelaidemetro.com.au](https://www.adelaidemetro.com.au) for more information.

A detour will be required intermittently during working hours, please see the detour maps overleaf for more information. For any traffic management queries during the night work hours please contact the Department's contractor, **Topcoat Asphalt** on 0408 806 770

### For further information:

- Contact the project team via email at [DIT.Engagement@sa.gov.au](mailto:DIT.Engagement@sa.gov.au)
- Call 1300 794 880

#### When

Monday 3 June 2024 to late June 2024, weather permitting

#### Hours of operation

##### Day Works

Monday to Friday

9am to 2pm

##### Night Works

Monday to Friday

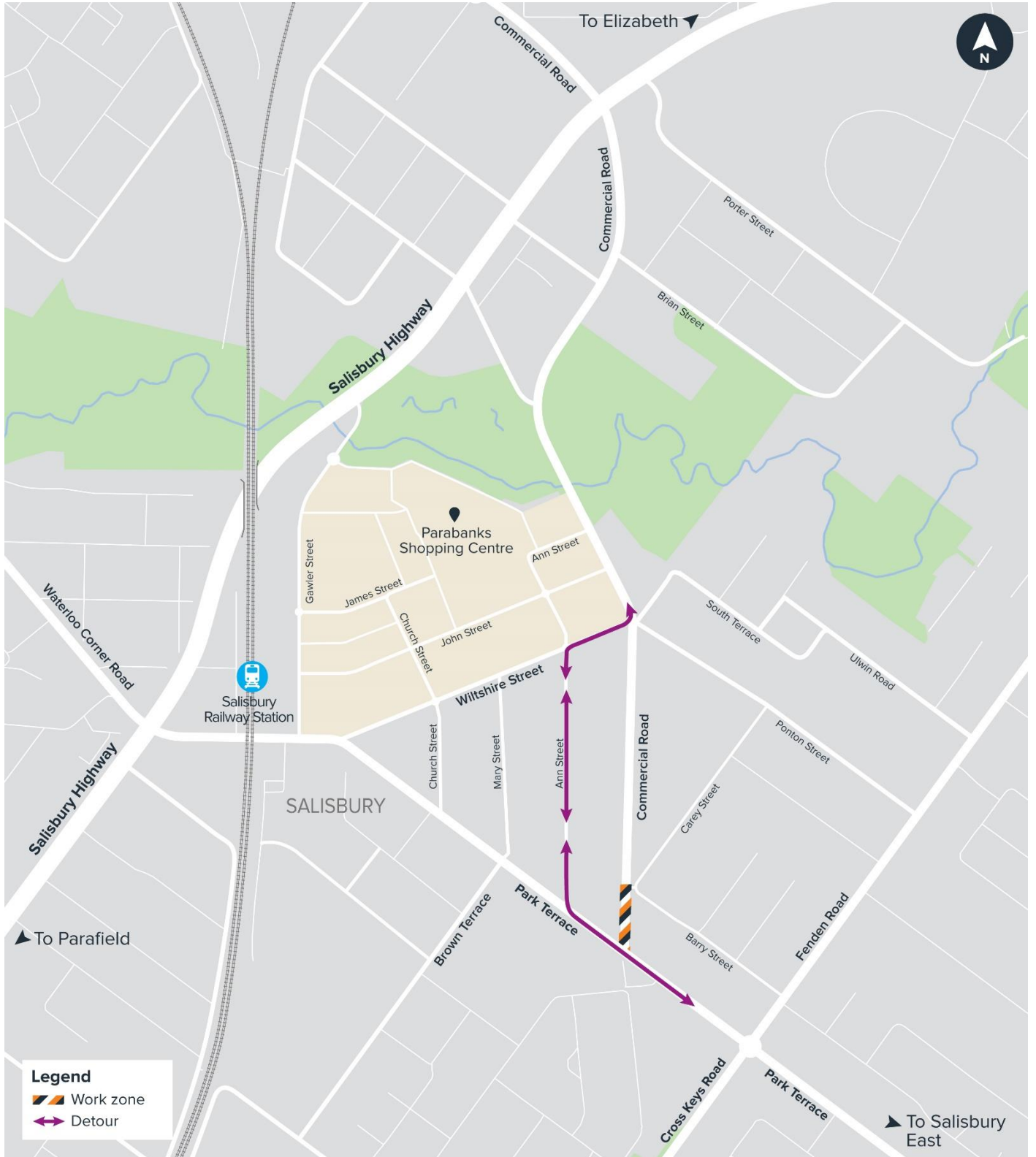
7pm to 6am

#### Where

Commercial Road, Salisbury, between Ann Street and Park Terrace



# Day Works Detour



# Night Works Detour

