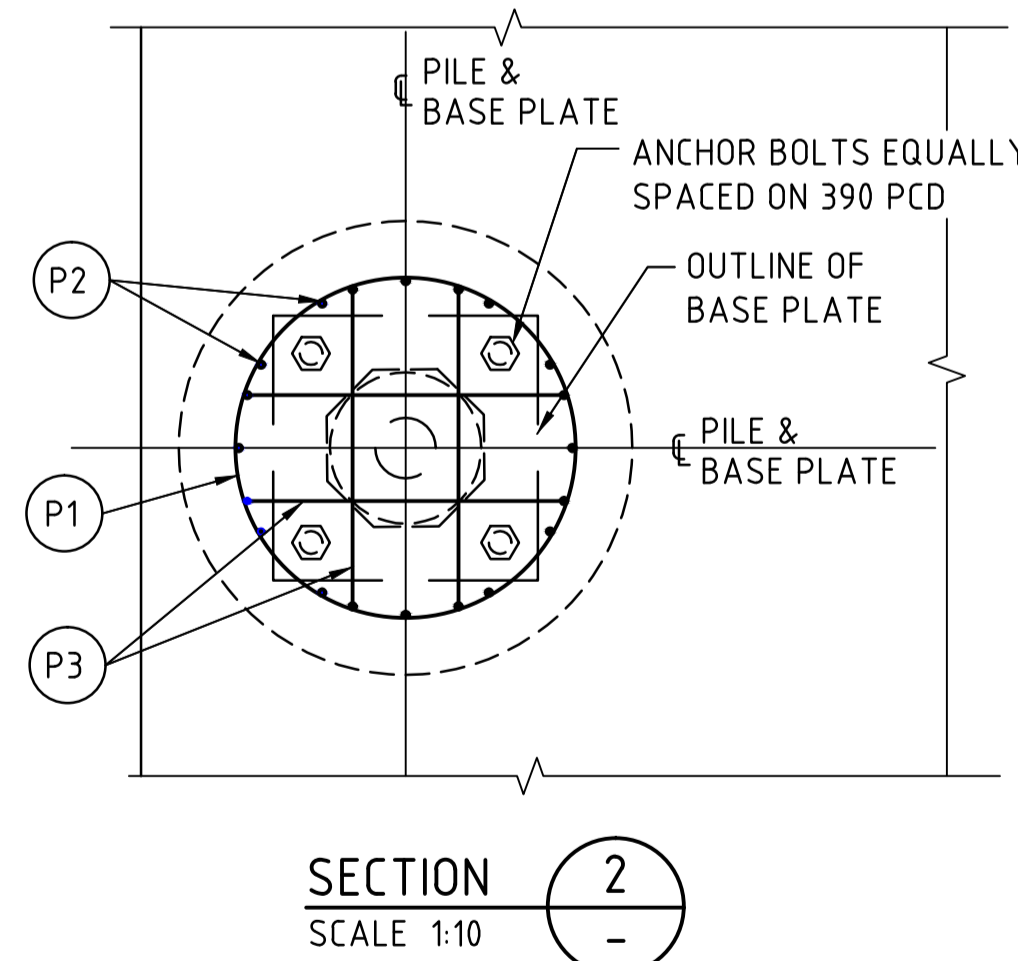
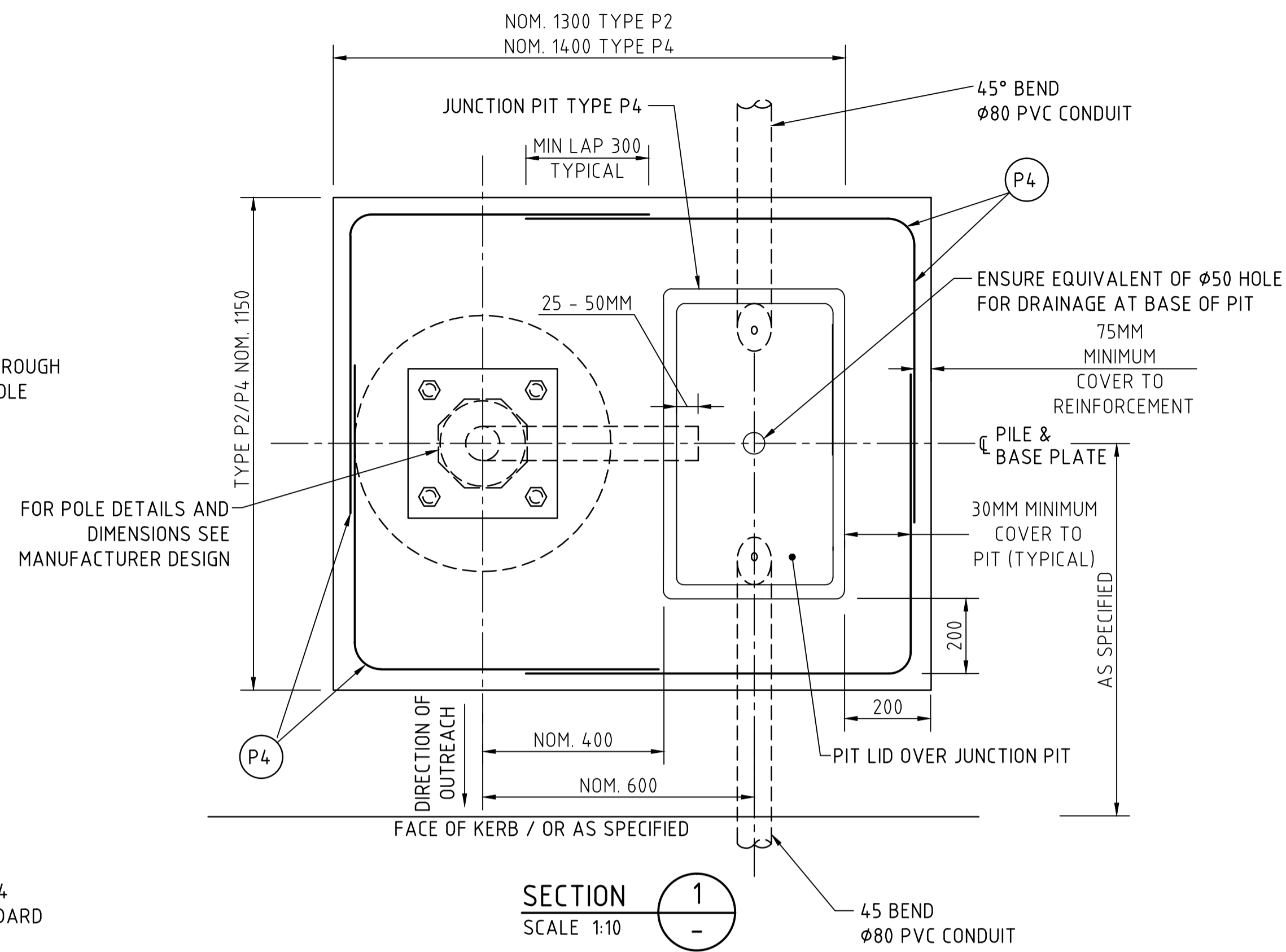
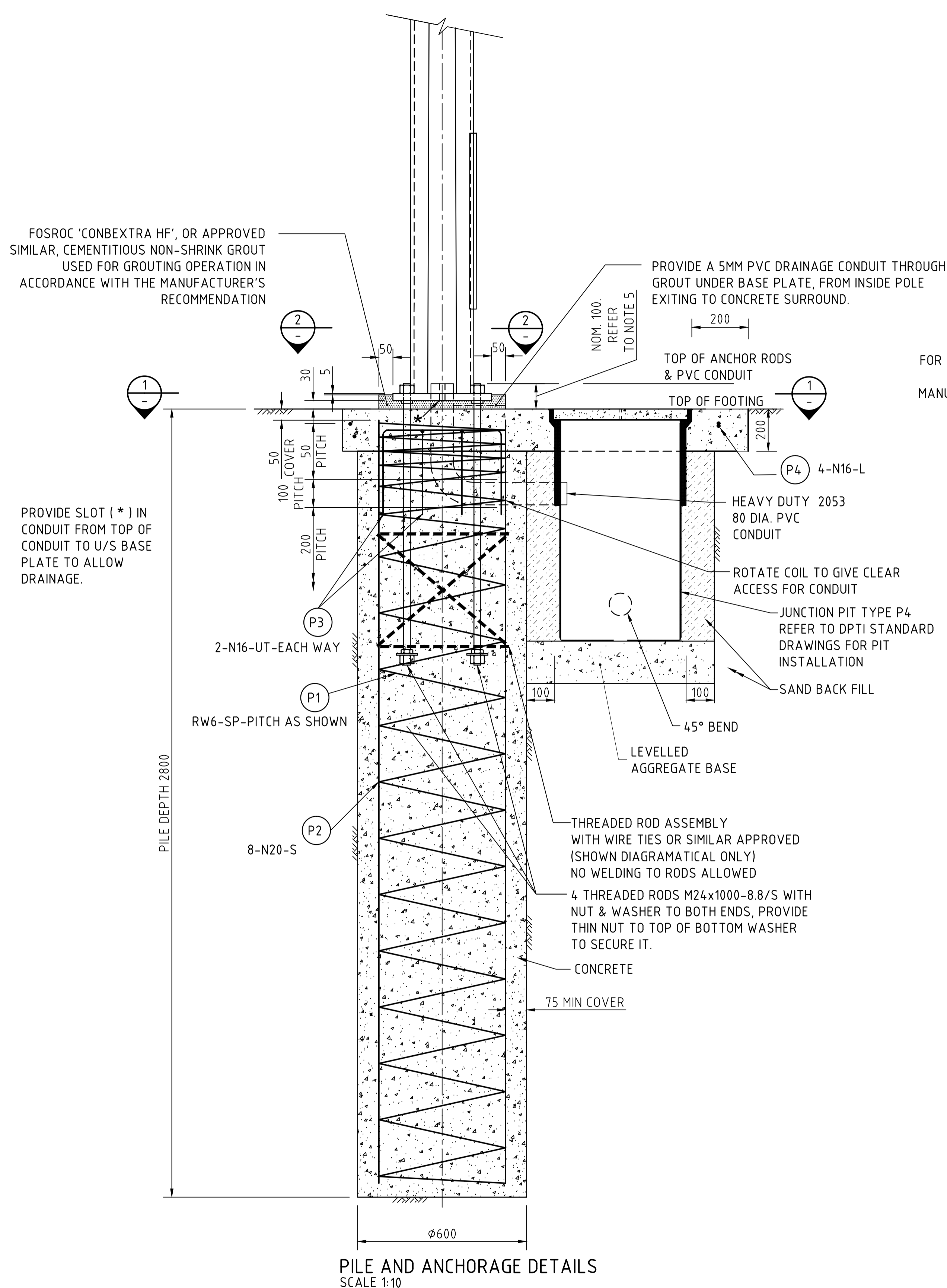


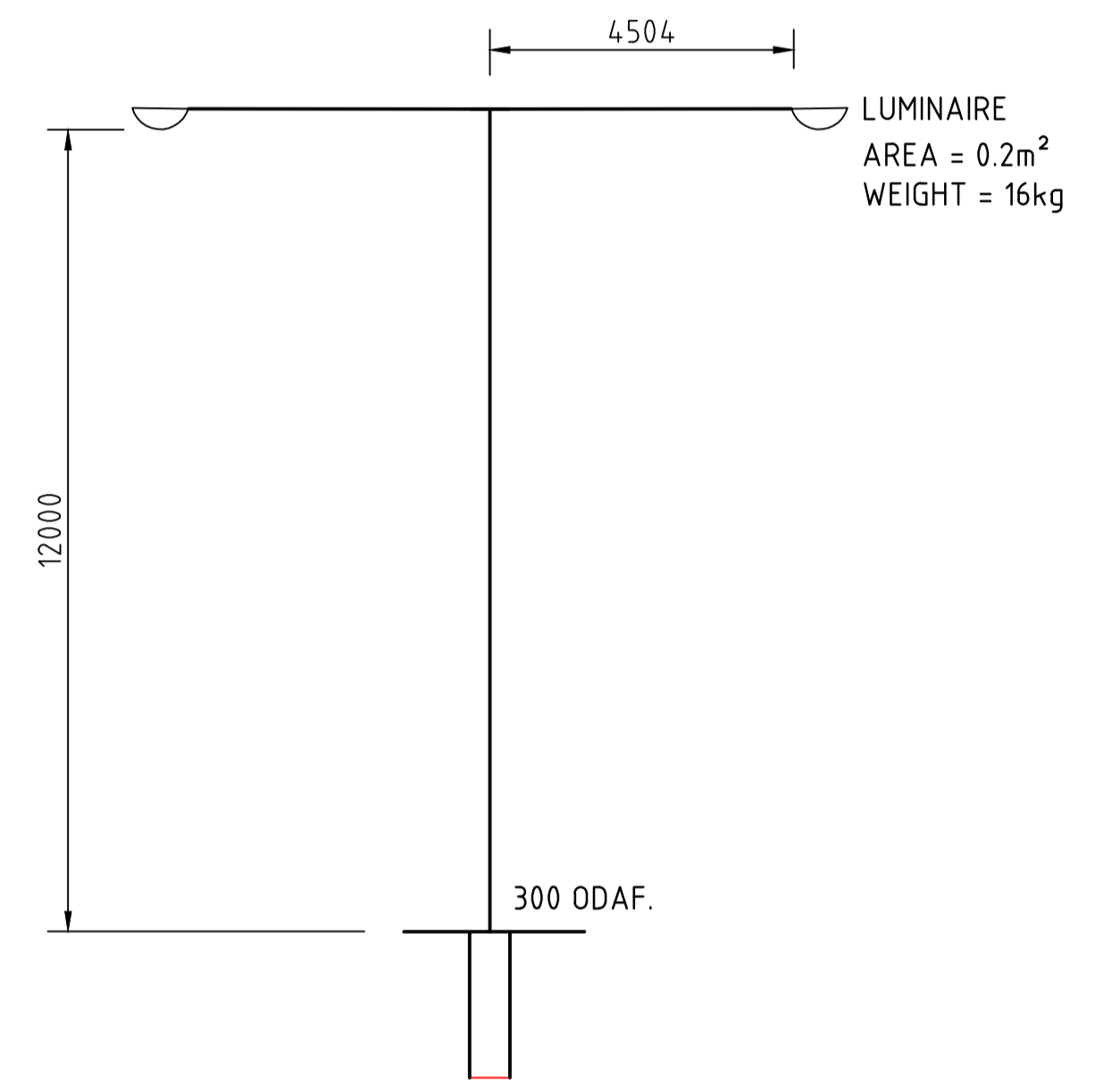
FOSROC 'CONBEXTRA HF', OR APPROVED SIMILAR, CEMENTITIOUS NON-SHRINK GROUT USED FOR GROUTING OPERATION IN ACCORDANCE WITH THE MANUFACTURER'S RECOMMENDATION

PROVIDE A 5MM PVC DRAINAGE CONDUIT THROUGH GROUT UNDER BASE PLATE, FROM INSIDE POLE EXITING TO CONCRETE SURROUND.

PROVIDE SLOT (\*) IN CONDUIT FROM TOP OF CONDUIT TO U/S BASE PLATE TO ALLOW DRAINAGE.



BAR	DESCRIPTION	NO. REQD.	SHAPE CODE	BENDING
P1	RW6	1	SP	
P2	N20	8	S	
P3	N16	4	UT	
P4	N16	4	L	



DESIGN MODEL FOR 4 WAY ROAD LIGHTING POLES

NOTES

- DESIGN**
- THIS FOOTING IS SUITABLE FOR FOUR WAY ROAD LIGHT POLES AS SHOWN ON DIAGRAM ABOVE.
- MATERIALS**
- CONCRETE TO BE GRADE N32.
  - MINIMUM COVER TO REINFORCEMENT TO BE 75mm UNLESS SHOWN OTHERWISE.
  - REINFORCEMENT BARS SHALL BE D500N AND D500L(RW) IN ACCORDANCE WITH AS/NZS 4671. STANDARD HOOKS AND BENDS IN ACCORDANCE WITH AS 3600.
  - THREADED ANCHOR RODS TO BE GRADE 8.8, NUTS AND WASHERS IN ACCORDANCE WITH AS 1252. ANCHOR RODS, NUTS AND WASHERS SHALL BE HOT DIP GALVANISED IN ACCORDANCE WITH AS 1214 (BOLTS AND NUTS), AND AS/NZS 4680 (WASHERS). ALL NUTS TO BE TAPPED OVERSIZE TO ACCOMMODATE GALVANISING.
  - PROJECTION OF TREADED RODS FROM THE TOP AND BOTTOM NUT FACE SHALL BE 6MM MINIMUM IN ACCORDANCE WITH AS4100
- FOUNDATION**
- FOOTINGS NOT TO BE INSTALLED IN LOOSE SAND OR FILL, SOFT CLAY, WET SOILS NEAR TO UNDERGROUND SERVICES OR ON SLOPES GREATER THAN 10 DEGREES. FOR SUCH LOCATIONS ADVICE TO BE SOUGHT FROM STRUCTURAL ENGINEER.
- ELECTRICAL WIRING**
- FOR DETAILS OF JUNCTION PIT AND POLE WIRING REFER TO STANDARD DRAWING S-4055, SHEET 46.



Government of South Australia

Department of Planning, Transport and Infrastructure

STANDARD DRAWING  
ROAD LIGHTING  
FOUR WAY ROAD LIGHTING POLE  
PILE FOOTING AND ANCHOR DETAILS

DESIGNED: AP	DRAFTED: LM	ACCEPTED FOR USE: S. PASCALE	ACCEPTANCE FORM KNET No.: 9467430	DRAWING No.: S-4055	SHEET No.: 64	AMEND No.: 0
CHECKED: AP	REVIEWED: PM	MGR, TECHNICAL SERVICES DATE: 5/4/16				