

Land Not Within a Council Area (Coastal Waters)

Land Not Within a Council Area (Metro)

Adelaide Hills Council

Mount Barker

Alexandrina

Yankalilla

Onkaparinga Development Plan Map

Produced by Department of Planning, Transport and Infrastructure
 Planning Division
 GPO Box 1815 Adelaide SA 5001
 www.sa.gov.au
 Lambert Conformal Conic
 9 June 2020

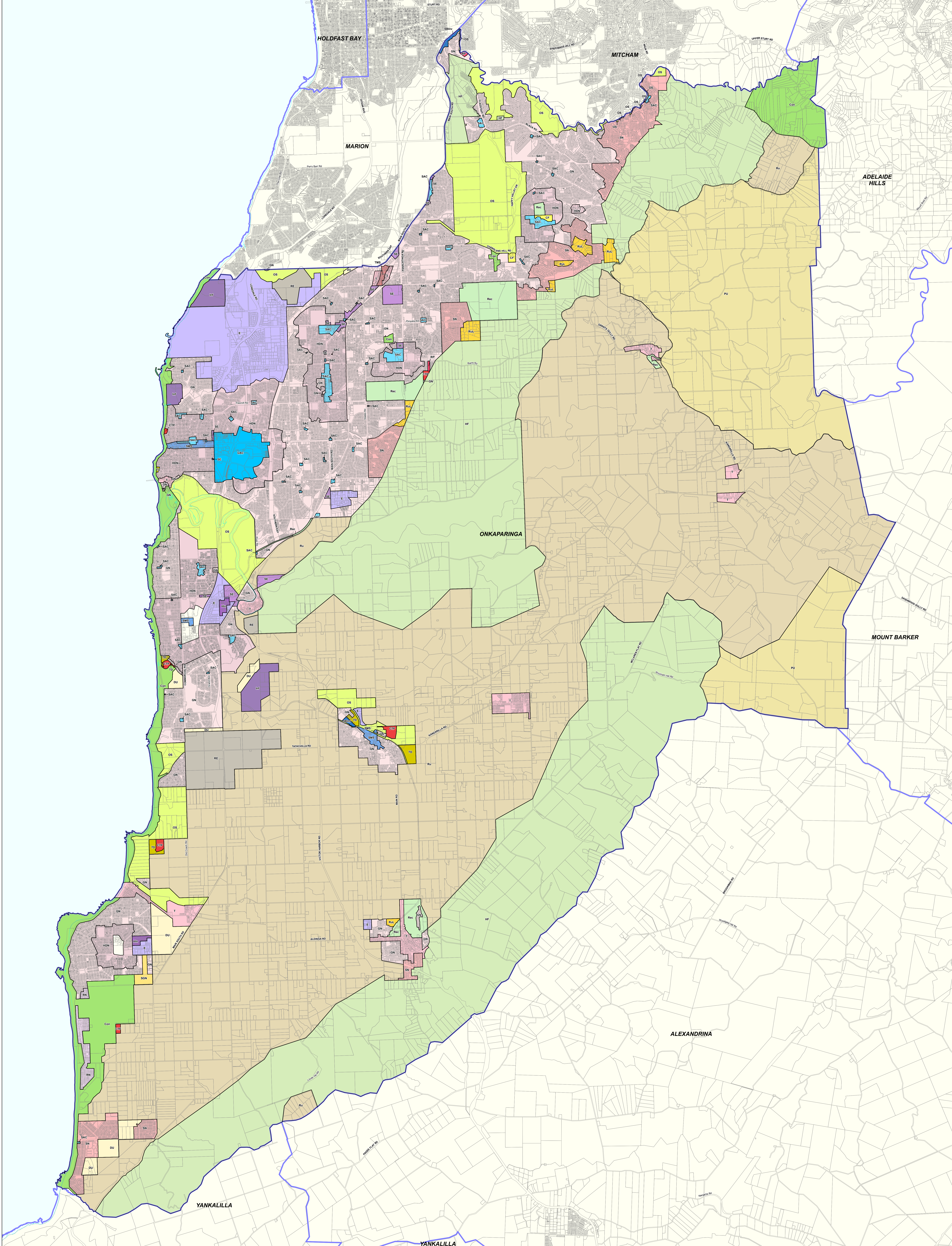
© Government of South Australia 2019. All rights reserved. No part of this document may be reproduced, stored in a retrieval system, or transmitted in any form, or by any means, without the prior written permission of the publisher, Department of Planning, Transport and Infrastructure.

While every reasonable effort has been made to ensure that this document is correct at the time of publication, the State of South Australia and its agencies, representatives, employees and contractors disclaim any and all liability to any person in respect to anything or the consequences of anything done or omitted to be done in reliance upon the whole or any part of this document.



- | | | |
|--------------------------|-----------------------------|--------------------------|
| Commercial | Primary Production / Mining | Cadastral |
| Community Facilities | Residential | Coastline / River Murray |
| Country Township | Rural Living | |
| Deferred Urban | Development Plan | |
| Environmental Constraint | Zoning | |
| Industrial | Policy Area | |
| Miscellaneous | Precinct | |
| Open Space | Local government boundary | |

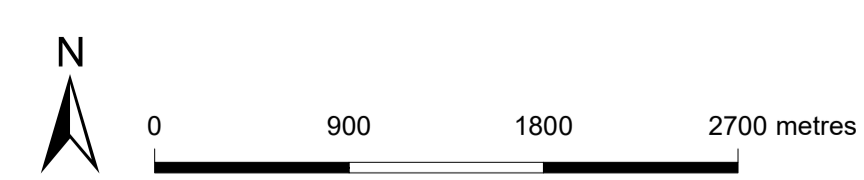
- | | | | |
|-------------------------------|-----------------------------------|-----------------------------------|-----------------------------------|
| Zoning | Precinct | Policy Area | Suburban Activity Node |
| BD - Bulky Goods | 1 - Christies Beach Policy Area | 1 - Christies Beach Policy Area | 1 - Christies Beach Policy Area |
| C - Commercial | 2 - Seaford Policy Area | 2 - Seaford Policy Area | 2 - Seaford Policy Area |
| CP - Caravan and Tourist Park | 3 - Seaford Heights Policy Area | 3 - Seaford Heights Policy Area | 3 - Seaford Heights Policy Area |
| Con - Conservation | 4 - Seaford Meadows Policy Area | 4 - Seaford Meadows Policy Area | 4 - Seaford Meadows Policy Area |
| CoCon - Coastal Conservation | 5 - Seaford Meadows Policy Area | 5 - Seaford Meadows Policy Area | 5 - Seaford Meadows Policy Area |
| Cu - Community | 6 - Seaford Meadows Policy Area | 6 - Seaford Meadows Policy Area | 6 - Seaford Meadows Policy Area |
| DC - District Centre | 7 - Seaford Meadows Policy Area | 7 - Seaford Meadows Policy Area | 7 - Seaford Meadows Policy Area |
| DU - Deferred Urban | 8 - Seaford Meadows Policy Area | 8 - Seaford Meadows Policy Area | 8 - Seaford Meadows Policy Area |
| HF - Hills Face | 9 - Seaford Meadows Policy Area | 9 - Seaford Meadows Policy Area | 9 - Seaford Meadows Policy Area |
| LCA - Local Centre | 10 - Seaford Meadows Policy Area | 10 - Seaford Meadows Policy Area | 10 - Seaford Meadows Policy Area |
| MJ - Mixed Use | 11 - Seaford Meadows Policy Area | 11 - Seaford Meadows Policy Area | 11 - Seaford Meadows Policy Area |
| MnEx - Mineral Extraction | 12 - Seaford Meadows Policy Area | 12 - Seaford Meadows Policy Area | 12 - Seaford Meadows Policy Area |
| NC - Neighbourhood Centre | 13 - Seaford Meadows Policy Area | 13 - Seaford Meadows Policy Area | 13 - Seaford Meadows Policy Area |
| OS - Open Space | 14 - Seaford Meadows Policy Area | 14 - Seaford Meadows Policy Area | 14 - Seaford Meadows Policy Area |
| PP - Primary Production | 15 - Seaford Meadows Policy Area | 15 - Seaford Meadows Policy Area | 15 - Seaford Meadows Policy Area |
| R - Residential | 16 - Seaford Meadows Policy Area | 16 - Seaford Meadows Policy Area | 16 - Seaford Meadows Policy Area |
| RCA - Regional Centre | 17 - Seaford Meadows Policy Area | 17 - Seaford Meadows Policy Area | 17 - Seaford Meadows Policy Area |
| RH - Residential Hills | 18 - Seaford Meadows Policy Area | 18 - Seaford Meadows Policy Area | 18 - Seaford Meadows Policy Area |
| RP - Residential Park | 19 - Seaford Meadows Policy Area | 19 - Seaford Meadows Policy Area | 19 - Seaford Meadows Policy Area |
| RL - Rural Living | 20 - Seaford Meadows Policy Area | 20 - Seaford Meadows Policy Area | 20 - Seaford Meadows Policy Area |
| | 21 - Seaford Meadows Policy Area | 21 - Seaford Meadows Policy Area | 21 - Seaford Meadows Policy Area |
| | 22 - Seaford Meadows Policy Area | 22 - Seaford Meadows Policy Area | 22 - Seaford Meadows Policy Area |
| | 23 - Seaford Meadows Policy Area | 23 - Seaford Meadows Policy Area | 23 - Seaford Meadows Policy Area |
| | 24 - Seaford Meadows Policy Area | 24 - Seaford Meadows Policy Area | 24 - Seaford Meadows Policy Area |
| | 25 - Seaford Meadows Policy Area | 25 - Seaford Meadows Policy Area | 25 - Seaford Meadows Policy Area |
| | 26 - Seaford Meadows Policy Area | 26 - Seaford Meadows Policy Area | 26 - Seaford Meadows Policy Area |
| | 27 - Seaford Meadows Policy Area | 27 - Seaford Meadows Policy Area | 27 - Seaford Meadows Policy Area |
| | 28 - Seaford Meadows Policy Area | 28 - Seaford Meadows Policy Area | 28 - Seaford Meadows Policy Area |
| | 29 - Seaford Meadows Policy Area | 29 - Seaford Meadows Policy Area | 29 - Seaford Meadows Policy Area |
| | 30 - Seaford Meadows Policy Area | 30 - Seaford Meadows Policy Area | 30 - Seaford Meadows Policy Area |
| | 31 - Seaford Meadows Policy Area | 31 - Seaford Meadows Policy Area | 31 - Seaford Meadows Policy Area |
| | 32 - Seaford Meadows Policy Area | 32 - Seaford Meadows Policy Area | 32 - Seaford Meadows Policy Area |
| | 33 - Seaford Meadows Policy Area | 33 - Seaford Meadows Policy Area | 33 - Seaford Meadows Policy Area |
| | 34 - Seaford Meadows Policy Area | 34 - Seaford Meadows Policy Area | 34 - Seaford Meadows Policy Area |
| | 35 - Seaford Meadows Policy Area | 35 - Seaford Meadows Policy Area | 35 - Seaford Meadows Policy Area |
| | 36 - Seaford Meadows Policy Area | 36 - Seaford Meadows Policy Area | 36 - Seaford Meadows Policy Area |
| | 37 - Seaford Meadows Policy Area | 37 - Seaford Meadows Policy Area | 37 - Seaford Meadows Policy Area |
| | 38 - Seaford Meadows Policy Area | 38 - Seaford Meadows Policy Area | 38 - Seaford Meadows Policy Area |
| | 39 - Seaford Meadows Policy Area | 39 - Seaford Meadows Policy Area | 39 - Seaford Meadows Policy Area |
| | 40 - Seaford Meadows Policy Area | 40 - Seaford Meadows Policy Area | 40 - Seaford Meadows Policy Area |
| | 41 - Seaford Meadows Policy Area | 41 - Seaford Meadows Policy Area | 41 - Seaford Meadows Policy Area |
| | 42 - Seaford Meadows Policy Area | 42 - Seaford Meadows Policy Area | 42 - Seaford Meadows Policy Area |
| | 43 - Seaford Meadows Policy Area | 43 - Seaford Meadows Policy Area | 43 - Seaford Meadows Policy Area |
| | 44 - Seaford Meadows Policy Area | 44 - Seaford Meadows Policy Area | 44 - Seaford Meadows Policy Area |
| | 45 - Seaford Meadows Policy Area | 45 - Seaford Meadows Policy Area | 45 - Seaford Meadows Policy Area |
| | 46 - Seaford Meadows Policy Area | 46 - Seaford Meadows Policy Area | 46 - Seaford Meadows Policy Area |
| | 47 - Seaford Meadows Policy Area | 47 - Seaford Meadows Policy Area | 47 - Seaford Meadows Policy Area |
| | 48 - Seaford Meadows Policy Area | 48 - Seaford Meadows Policy Area | 48 - Seaford Meadows Policy Area |
| | 49 - Seaford Meadows Policy Area | 49 - Seaford Meadows Policy Area | 49 - Seaford Meadows Policy Area |
| | 50 - Seaford Meadows Policy Area | 50 - Seaford Meadows Policy Area | 50 - Seaford Meadows Policy Area |
| | 51 - Seaford Meadows Policy Area | 51 - Seaford Meadows Policy Area | 51 - Seaford Meadows Policy Area |
| | 52 - Seaford Meadows Policy Area | 52 - Seaford Meadows Policy Area | 52 - Seaford Meadows Policy Area |
| | 53 - Seaford Meadows Policy Area | 53 - Seaford Meadows Policy Area | 53 - Seaford Meadows Policy Area |
| | 54 - Seaford Meadows Policy Area | 54 - Seaford Meadows Policy Area | 54 - Seaford Meadows Policy Area |
| | 55 - Seaford Meadows Policy Area | 55 - Seaford Meadows Policy Area | 55 - Seaford Meadows Policy Area |
| | 56 - Seaford Meadows Policy Area | 56 - Seaford Meadows Policy Area | 56 - Seaford Meadows Policy Area |
| | 57 - Seaford Meadows Policy Area | 57 - Seaford Meadows Policy Area | 57 - Seaford Meadows Policy Area |
| | 58 - Seaford Meadows Policy Area | 58 - Seaford Meadows Policy Area | 58 - Seaford Meadows Policy Area |
| | 59 - Seaford Meadows Policy Area | 59 - Seaford Meadows Policy Area | 59 - Seaford Meadows Policy Area |
| | 60 - Seaford Meadows Policy Area | 60 - Seaford Meadows Policy Area | 60 - Seaford Meadows Policy Area |
| | 61 - Seaford Meadows Policy Area | 61 - Seaford Meadows Policy Area | 61 - Seaford Meadows Policy Area |
| | 62 - Seaford Meadows Policy Area | 62 - Seaford Meadows Policy Area | 62 - Seaford Meadows Policy Area |
| | 63 - Seaford Meadows Policy Area | 63 - Seaford Meadows Policy Area | 63 - Seaford Meadows Policy Area |
| | 64 - Seaford Meadows Policy Area | 64 - Seaford Meadows Policy Area | 64 - Seaford Meadows Policy Area |
| | 65 - Seaford Meadows Policy Area | 65 - Seaford Meadows Policy Area | 65 - Seaford Meadows Policy Area |
| | 66 - Seaford Meadows Policy Area | 66 - Seaford Meadows Policy Area | 66 - Seaford Meadows Policy Area |
| | 67 - Seaford Meadows Policy Area | 67 - Seaford Meadows Policy Area | 67 - Seaford Meadows Policy Area |
| | 68 - Seaford Meadows Policy Area | 68 - Seaford Meadows Policy Area | 68 - Seaford Meadows Policy Area |
| | 69 - Seaford Meadows Policy Area | 69 - Seaford Meadows Policy Area | 69 - Seaford Meadows Policy Area |
| | 70 - Seaford Meadows Policy Area | 70 - Seaford Meadows Policy Area | 70 - Seaford Meadows Policy Area |
| | 71 - Seaford Meadows Policy Area | 71 - Seaford Meadows Policy Area | 71 - Seaford Meadows Policy Area |
| | 72 - Seaford Meadows Policy Area | 72 - Seaford Meadows Policy Area | 72 - Seaford Meadows Policy Area |
| | 73 - Seaford Meadows Policy Area | 73 - Seaford Meadows Policy Area | 73 - Seaford Meadows Policy Area |
| | 74 - Seaford Meadows Policy Area | 74 - Seaford Meadows Policy Area | 74 - Seaford Meadows Policy Area |
| | 75 - Seaford Meadows Policy Area | 75 - Seaford Meadows Policy Area | 75 - Seaford Meadows Policy Area |
| | 76 - Seaford Meadows Policy Area | 76 - Seaford Meadows Policy Area | 76 - Seaford Meadows Policy Area |
| | 77 - Seaford Meadows Policy Area | 77 - Seaford Meadows Policy Area | 77 - Seaford Meadows Policy Area |
| | 78 - Seaford Meadows Policy Area | 78 - Seaford Meadows Policy Area | 78 - Seaford Meadows Policy Area |
| | 79 - Seaford Meadows Policy Area | 79 - Seaford Meadows Policy Area | 79 - Seaford Meadows Policy Area |
| | 80 - Seaford Meadows Policy Area | 80 - Seaford Meadows Policy Area | 80 - Seaford Meadows Policy Area |
| | 81 - Seaford Meadows Policy Area | 81 - Seaford Meadows Policy Area | 81 - Seaford Meadows Policy Area |
| | 82 - Seaford Meadows Policy Area | 82 - Seaford Meadows Policy Area | 82 - Seaford Meadows Policy Area |
| | 83 - Seaford Meadows Policy Area | 83 - Seaford Meadows Policy Area | 83 - Seaford Meadows Policy Area |
| | 84 - Seaford Meadows Policy Area | 84 - Seaford Meadows Policy Area | 84 - Seaford Meadows Policy Area |
| | 85 - Seaford Meadows Policy Area | 85 - Seaford Meadows Policy Area | 85 - Seaford Meadows Policy Area |
| | 86 - Seaford Meadows Policy Area | 86 - Seaford Meadows Policy Area | 86 - Seaford Meadows Policy Area |
| | 87 - Seaford Meadows Policy Area | 87 - Seaford Meadows Policy Area | 87 - Seaford Meadows Policy Area |
| | 88 - Seaford Meadows Policy Area | 88 - Seaford Meadows Policy Area | 88 - Seaford Meadows Policy Area |
| | 89 - Seaford Meadows Policy Area | 89 - Seaford Meadows Policy Area | 89 - Seaford Meadows Policy Area |
| | 90 - Seaford Meadows Policy Area | 90 - Seaford Meadows Policy Area | 90 - Seaford Meadows Policy Area |
| | 91 - Seaford Meadows Policy Area | 91 - Seaford Meadows Policy Area | 91 - Seaford Meadows Policy Area |
| | 92 - Seaford Meadows Policy Area | 92 - Seaford Meadows Policy Area | 92 - Seaford Meadows Policy Area |
| | 93 - Seaford Meadows Policy Area | 93 - Seaford Meadows Policy Area | 93 - Seaford Meadows Policy Area |
| | 94 - Seaford Meadows Policy Area | 94 - Seaford Meadows Policy Area | 94 - Seaford Meadows Policy Area |
| | 95 - Seaford Meadows Policy Area | 95 - Seaford Meadows Policy Area | 95 - Seaford Meadows Policy Area |
| | 96 - Seaford Meadows Policy Area | 96 - Seaford Meadows Policy Area | 96 - Seaford Meadows Policy Area |
| | 97 - Seaford Meadows Policy Area | 97 - Seaford Meadows Policy Area | 97 - Seaford Meadows Policy Area |
| | 98 - Seaford Meadows Policy Area | 98 - Seaford Meadows Policy Area | 98 - Seaford Meadows Policy Area |
| | 99 - Seaford Meadows Policy Area | 99 - Seaford Meadows Policy Area | 99 - Seaford Meadows Policy Area |
| | 100 - Seaford Meadows Policy Area | 100 - Seaford Meadows Policy Area | 100 - Seaford Meadows Policy Area |



Onkaparinga

2019 Code Consultation Map

- | | | | | |
|---|--|--|--|--|
| P&D Code Zones
Infrastructure & Movement Systems
Infrastructure
Community Facilities
People & Neighbourhoods - Residential
Caravan and Tourist Park
Deferred Urban
General Neighbourhood
Housing Diversity Neighbourhood | Residential Neighbourhood
Residential Park
Suburban Greenfield Neighbourhood
Suburban Neighbourhood
Township
People & Neighbourhoods - Rural
Rural Living
Productive Economy - Employment
Suburban Activity Centre | Suburban Business and Innovation
Suburban Main Street
Urban Activity Centre
Employment
Home Industry
Suburban Employment
Productive Economy - Mixed Use
Township Main Street | Productive Economy - Primary Industry
Peri-Urban
Rural
Resource Extraction
Resilient Communities & Environment
Conservation
Hills Face
Open Space
Recreation | Local government boundary
Cadastre
Coastal HWM |
|---|--|--|--|--|



Produced by Department of Planning, Transport and Infrastructure
 Planning and Land Use Services
 GPO Box 1815 Adelaide SA 5001
 www.sa.gov.au
 Lambert Conformal Conic
 Projection Compiled 30 September 2019

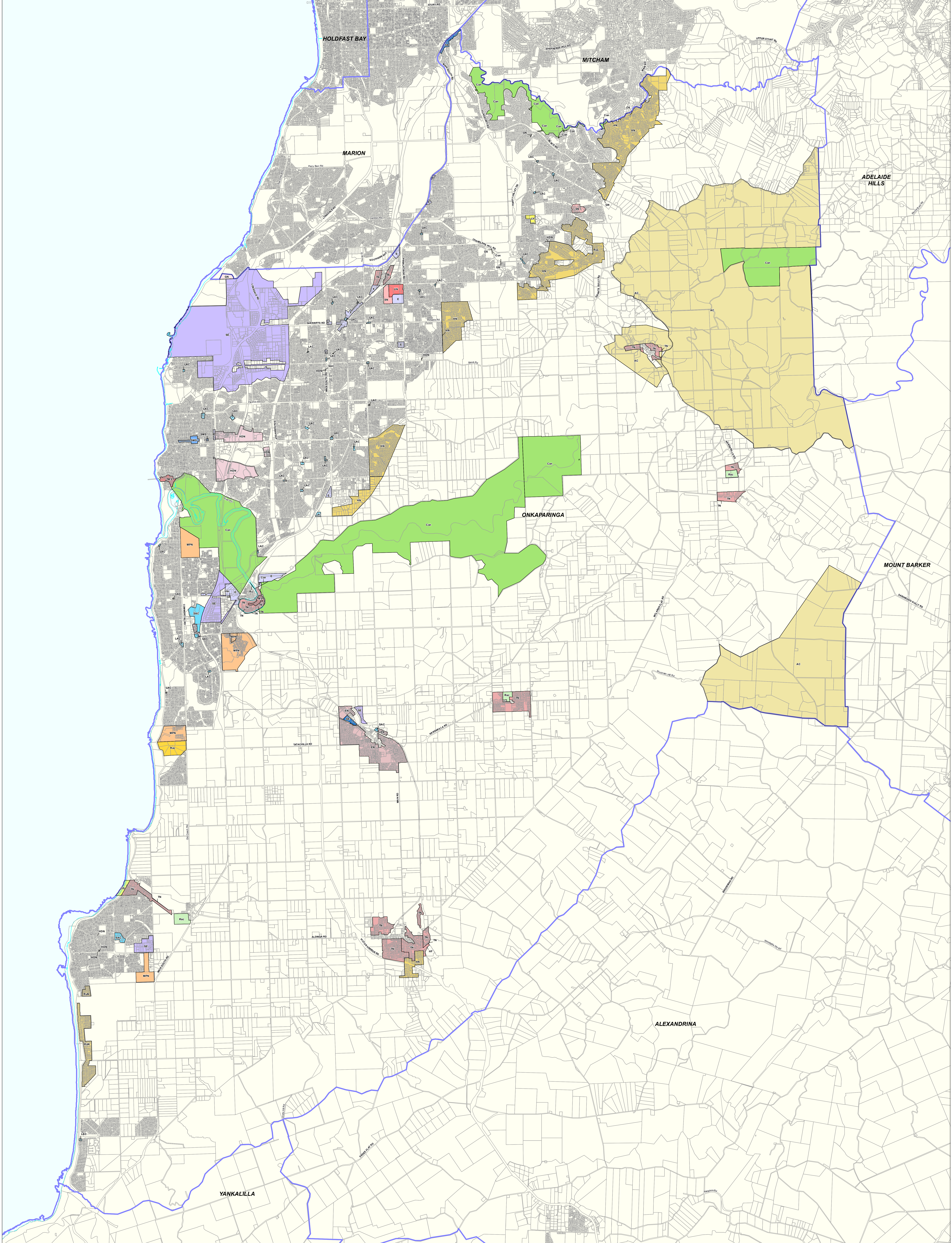
© Government of South Australia 2019
 No part of this document may be reproduced, stored in a retrieval system, or transmitted in any form or by any means, without the prior written permission of the publisher, Department of Planning, Transport and Infrastructure.

While every reasonable effort has been made to ensure that this document is correct at the time of publication, the State of South Australia and its agencies, employees and contractors, disclaim any and all liability to any person in respect to anything or the consequences of anything done or omitted to be done in reliance upon the whole or any part of this document.



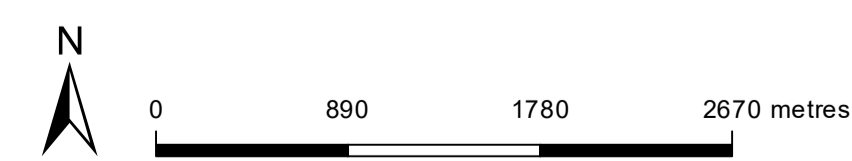
- P&D Code Zones Abbreviations**
- CF - Community Facilities
 - CTP - Caravan and Tourist Park
 - GN - General Neighbourhood
 - DU - Deferred Urban
 - E - Employment
 - GN - General Neighbourhood
 - HDN - Housing Diversity Neighbourhood
 - HI - Home Industry
 - INF - Infrastructure
 - OS - Open Space
 - PU - Peri-Urban
 - RE - Resource Extraction
 - RL - Residential Park
 - REC - Recreation
 - RU - Rural
 - RL - Rural Living
 - SAC - Suburban Activity Centre
 - SBIN - Suburban Business and Innovation
 - SN - Suburban Neighbourhood
 - SN - Suburban Greenfield Neighbourhood

P&D Code Zones
DRAFT



Onkaparinga

2020 Updated Code Consultation Map



P&D Code Zones

DRAFT

- | | | | |
|---|---|--|--|
| <ul style="list-style-type: none"> People & Neighbourhoods - Residential Established Neighbourhood General Neighbourhood Hills Neighbourhood Housing Diversity Neighbourhood Master Planned Neighbourhood Suburban Neighbourhood Township Neighbourhood | <ul style="list-style-type: none"> Urban Neighbourhood People & Neighbourhoods - Rural Rural Living Rural Neighbourhood Productive Economy - Employment Local Activity Centre Suburban Activity Centre Suburban Business Suburban Main Street | <ul style="list-style-type: none"> Employment Home Industry Strategic Employment Productive Economy - Mixed Use Township Main Street Infrastructure & Movement Systems Community Facilities Productive Economy - Primary Industry Adelaide Country | <ul style="list-style-type: none"> Rural Resilient Communities & Environment Conservation Hills Face Open Space Recreation Local government boundary Cadastre Coastline HWM |
|---|---|--|--|

Produced by Attorney-General's Department
 Planning and Land Use Services
 GPO Box 1815 Adelaide SA 5001
 www.sagov.au
 Lambert Conformal Conic
 4 November 2020

© Government of South Australia 2020
 No part of this document may be reproduced, stored in a retrieval system, or transmitted in any form, or by any means, without the prior written permission of the publisher, the Attorney-General's Department.

While every reasonable effort has been made to ensure that this document is correct at the time of publication, the State of South Australia and its agencies, officers, employees and contractors, disclaim any and all liability to any person in respect to anything or the consequences of anything done or omitted to be done in reliance upon the whole or any part of this document.



PLN10/181

Current Development Plan Zone	Current Development Plan Policy Area	Current Development Plan Precinct	Consultation November 2019 Code Proposal	Consultation November 2020 Code Proposal	Planning & Design Code Subzone
Bulky Goods			Suburban Employment	Employment	
Caravan and Tourist Park	Christies Beach Policy Area 1		Caravan and Tourist Park	Caravan and Tourist Park	
Caravan and Tourist Park	Maslin Beach Policy Area 2		Caravan and Tourist Park	Caravan and Tourist Park	
Caravan and Tourist Park	Moana Policy Area 3		Caravan and Tourist Park	Caravan and Tourist Park	
Caravan and Tourist Park			Caravan and Tourist Park	Caravan and Tourist Park	
Coastal Conservation			Conservation	Conservation	
Commercial			Suburban Employment	Employment	
Community	Recreation Policy Area	Coast to Vines Rail Trail Precinct	Recreation	Recreation	
Community	Recreation Policy Area		Recreation	Recreation	
Community			Community Facilities	Community Facilities	
Conservation	Aldinga Sellicks Conservation Policy Area		Conservation	Conservation	
Conservation			Conservation	Conservation	
Deferred Urban			Deferred Urban	Deferred Urban	
District Centre	Aberfoyle Park Policy Area	Business Precinct	Suburban Activity Centre	Suburban Activity Centre	
District Centre	Aberfoyle Park Policy Area	Car Park Precinct	Suburban Activity Centre	Suburban Activity Centre	
District Centre	Aberfoyle Park Policy Area	Education Precinct	Community Facilities	Community Facilities	
District Centre	Aberfoyle Park Policy Area	Recreation Precinct	Recreation	Recreation	
District Centre	Aberfoyle Park Policy Area	Retail Precinct	Suburban Activity Centre	Suburban Activity Centre	
District Centre	Aberfoyle Park Policy Area	Western Precinct	Suburban Activity Centre	Community Facilities	
District Centre	Aberfoyle Park Policy Area		Suburban Activity Centre	Suburban Activity Centre	

Current Development Plan Zone	Current Development Plan Policy Area	Current Development Plan Precinct	Consultation November 2019 Code Proposal	Consultation November 2020 Code Proposal	Planning & Design Code Subzone
District Centre	Aldinga Beach Policy Area		Community Facilities / Suburban Activity Centre	Suburban Activity Centre	
District Centre	Christies Beach Road Policy Area		Suburban Main Street / Suburban Activity Centre	Suburban Main Street	
District Centre	Seaford Policy Area	Main Street Precinct	Suburban Main Street	Suburban Main Street	
District Centre	Seaford Policy Area		Suburban Activity Centre / Community Facilities	Suburban Activity Centre / Housing Diversity Neighbourhood (zone split)	
District Centre	Sherriffs Road Policy Area		Suburban Activity Centre	Suburban Activity Centre	
District Centre			Suburban Activity Centre	Suburban Activity Centre	
Hills Face			Hills Face	Hills Face	
Local Centre	Hepenstal Road Policy Area		Suburban Activity Centre	Local Activity Centre	
Local Centre	River Road Policy Area		Suburban Activity Centre	Local Activity Centre	
Local Centre			Suburban Activity Centre	Local Activity Centre	
Mineral Extraction	Reynella Policy Area 21		Resource Extraction	Resource Extraction	
Mineral Extraction			Resource Extraction	Resource Extraction	
Mixed Use			Suburban Business and Innovation	Suburban Business	
Neighbourhood Centre	McLaren Vale Policy Area		Suburban Main Street	Suburban Main Street Suburban Activity Centre (Field Street only)	
Neighbourhood Centre	O'Halloran Hill Policy Area	Business/Office Precinct	Suburban Activity Centre	Suburban Activity Centre	
Neighbourhood Centre	O'Halloran Hill Policy Area	Commercial/Services Activities Precinct	Suburban Employment	Employment	
Neighbourhood Centre	O'Halloran Hill Policy Area	General Commercial Precinct	Suburban Employment	Employment	
Neighbourhood Centre	O'Halloran Hill Policy Area	Limited Retail Precinct	Suburban Activity Centre	Suburban Activity Centre	

Current Development Plan Zone	Current Development Plan Policy Area	Current Development Plan Precinct	Consultation November 2019 Code Proposal	Consultation November 2020 Code Proposal	Planning & Design Code Subzone
Neighbourhood Centre	O'Halloran Hill Policy Area	Shopping/Office/Community Precinct	Suburban Activity Centre	Suburban Activity Centre	
Neighbourhood Centre	Seaford Heights Policy Area		Suburban Activity Centre	Master Planned Neighbourhood	Emerging Activity Centre
Neighbourhood Centre			Suburban Activity Centre	Suburban Activity Centre	
Open Space	Field River Valley Policy Area		Open Space	Open Space	
Open Space	Onkaparinga River Policy Area		Open Space	Open Space	
Open Space	Pedler Creek Policy Area		Open Space	Open Space	
Open Space	Port Willunga Creek Policy Area		Open Space	Open Space	
Open Space	Seascape Policy Area		Open Space	Open Space Rural Living Zone (for existing subdivision area)	
Open Space			Open Space	Open Space	
Primary Production	Environment Protection Policy Area		Conservation	Conservation	
Primary Production	Landscape Protection Policy Area		Rural	Rural	
Primary Production	Mount Lofty Ranges Policy Area		Rural	Rural	
Primary Production	Open Space Policy Area		Rural	Rural	
Primary Production			Rural	Rural	
Regional Centre	Central City Policy Area		Urban Activity Centre	Urban Activity Centre	
Regional Centre	Inner Residential Policy Area		Urban Activity Centre	Housing Diversity Neighbourhood	
Residential	Aldinga Beach Policy Area		General Neighbourhood	General Neighbourhood	
Residential	Aldinga Dunes Policy Area		Residential Neighbourhood	Rural Neighbourhood	
Residential	Coordinated Development Policy Area		Housing Diversity Neighbourhood	Suburban Neighbourhood	
Residential	Coordinated Development Policy Area		General Neighbourhood	Hills Neighbourhood	

Current Development Plan Zone	Current Development Plan Policy Area	Current Development Plan Precinct	Consultation November 2019 Code Proposal	Consultation November 2020 Code Proposal	Planning & Design Code Subzone
Residential	Hart Road Policy Area		Suburban Greenfield Neighbourhood	Master Planned Neighbourhood	
Residential	Lonsdale		N/A (new Policy Area)	General Neighbourhood	
Residential	McLaren Vale Policy Area		General Neighbourhood	Established Neighbourhood	
Residential	Medium Density Policy Area	Targeted Infill Precinct	Housing Diversity Neighbourhood	Housing Diversity Neighbourhood	
Residential	Medium Density Policy Area		Housing Diversity Neighbourhood	Housing Diversity Neighbourhood	
Residential	Noarlunga Downs Policy Area		General Neighbourhood	General Neighbourhood	
Residential	Old Reynella Policy Area		N/A (new Zone and Policy Area)	Suburban Neighbourhood	
Residential	Onkaparinga Hills/Woodcroft Policy Area		Suburban Neighbourhood	Hills Neighbourhood	
Residential	Seaford Heights Policy Area		Housing Diversity Neighbourhood	Master Planned Neighbourhood	
Residential	Seaford Meadows Policy Area		Housing Diversity Neighbourhood	Master Planned Neighbourhood / Housing Diversity Neighbourhood (zone split)	
Residential	Sellicks Beach Policy Area		Suburban Neighbourhood	Suburban Neighbourhood	
Residential	Willunga Policy Area		General Neighbourhood	Township Neighbourhood	
Residential			General Neighbourhood	General Neighbourhood	
Residential Hills	Coromandel Valley Policy Area		Suburban Neighbourhood	Hills Neighbourhood	
Residential Hills	Happy Valley Interface Policy Area		Rural Living	Rural Living	
Residential Hills	Willunga Policy Area		Suburban Neighbourhood	Hills Neighbourhood	
Residential Hills			Suburban Neighbourhood	Hills Neighbourhood	
Residential Park			Residential Park	Residential Park	
Rural Living	Vegetation Management Policy Area		Rural Living	Rural Living	

Current Development Plan Zone	Current Development Plan Policy Area	Current Development Plan Precinct	Consultation November 2019 Code Proposal	Consultation November 2020 Code Proposal	Planning & Design Code Subzone
Rural Living			Rural Living	Rural Living	
Suburban Activity Node Zone	Old Reynella Policy Area		N/A (new Zone and Policy Area)	Urban Neighbourhood	
Tourism Development	Bellevue Centre Policy Area 51		Tourism Development	Tourism Development	
Tourism Development	Maslin Beach Policy Area 53		Tourism Development	Tourism Development	
Tourism Development	McLaren Vale Policy Area 54		Tourism Development	Tourism Development	Winery Experience
Tourism Development	Moana Foreshore Policy Area 55		Tourism Development	Tourism Development	
Tourism Development	Port Noarlunga Policy Area 56		Tourism Development	Tourism Development	
Town Centre			Township	Township Main Street	
Township	Clarendon Policy Area	Landscape Environs Precinct	Rural	Adelaide Country	
Township	Clarendon Policy Area	Living Precinct	Township	Township Neighbourhood	
Township	Clarendon Policy Area	Mixed Use Precinct	Township	Township	
Township	Clarendon Policy Area	Recreation/Open Space Precinct	Recreation	Recreation	
Township	Kangarilla Policy Area		Township	Township Neighbourhood	
Township	McLaren Flat Policy Area		Township	Township Neighbourhood / Township Zone / Recreation Zone (zone split)	
Township	Old Noarlunga Policy Area		Township	Township Neighbourhood / Township Main Street (zone split)	
Township	Old Reynella Policy Area	Residential Precinct	Township	Township Neighbourhood	
Township	Old Reynella Policy Area	Town Centre Precinct	Township	Township Main Street	
Township	Port Willunga/Aldinga Policy Area	Aldinga Village Precinct	Township	Township / Recreation (zone split)	
Township	Port Willunga/Aldinga Policy Area	Old Port Road Precinct	Township	Township Neighbourhood	
Township	Port Willunga/Aldinga Policy Area	Port Willunga Foreshore Precinct	Township	Open Space	

Current Development Plan Zone	Current Development Plan Policy Area	Current Development Plan Precinct	Consultation November 2019 Code Proposal	Consultation November 2020 Code Proposal	Planning & Design Code Subzone
Township	Port Willunga/Aldinga Policy Area	Port Willunga Precinct	Township	Township Neighbourhood	
Township	Willunga Policy Area	Residential Precinct	Township	Township Neighbourhood	
Township	Yaroona Policy Area		Township	Township / Recreation (zone split)	
Township			Township	Township Neighbourhood	
Township	Home Business Policy Area 17		Township	Township	
Township	Infrastructure Policy Area 13		Township	Township	
Urban Employment	Main Road Policy Area 12		Home Industry	Home Industry	
Urban Employment	Old Noarlunga Policy Area 19		Suburban Employment	Employment	
Urban Employment	Old Reynella Policy Area 14		Suburban Employment	Employment	
Urban Employment	Port Stanvac Policy Area 15		Employment	Strategic Employment	
Urban Employment			Employment	Strategic Employment / Employment (zone split)	
Urban Employment	Watershed Priority Policy Area		Employment	Strategic Employment	
Watershed Protection (Mount Lofty Ranges)			Peri-Urban	Adelaide Country	
Watershed Protection (Mount Lofty Ranges)	Home Business Policy Area 17		Peri-Urban	Adelaide Country	