

# Tea Tree Gully

- Commercial
- Community Facilities
- Country Township
- Deferred Urban
- Environmental Constraint
- Industrial
- Infrastructure
- Open Space
- Primary Production / Mining
- Recreation
- Residential
- Rural Living
- Development Plan
- Zoning
- Policy Area
- Precinct
- Local government boundary
- Cadastre

Produced by Department of Planning, Transport and Infrastructure  
 Planning Division  
 GPO Box 1815 Adelaide SA 5001  
 www.sa.gov.au  
 Lambert Conformal Conic  
 Projection  
 Compiled 9 June 2020

© Government of South Australia 2019  
 No part of this document may be reproduced, stored in a retrieval system, or transmitted in any form, or by any means, without the prior written permission of the publisher, Department of Planning, Transport and Infrastructure.

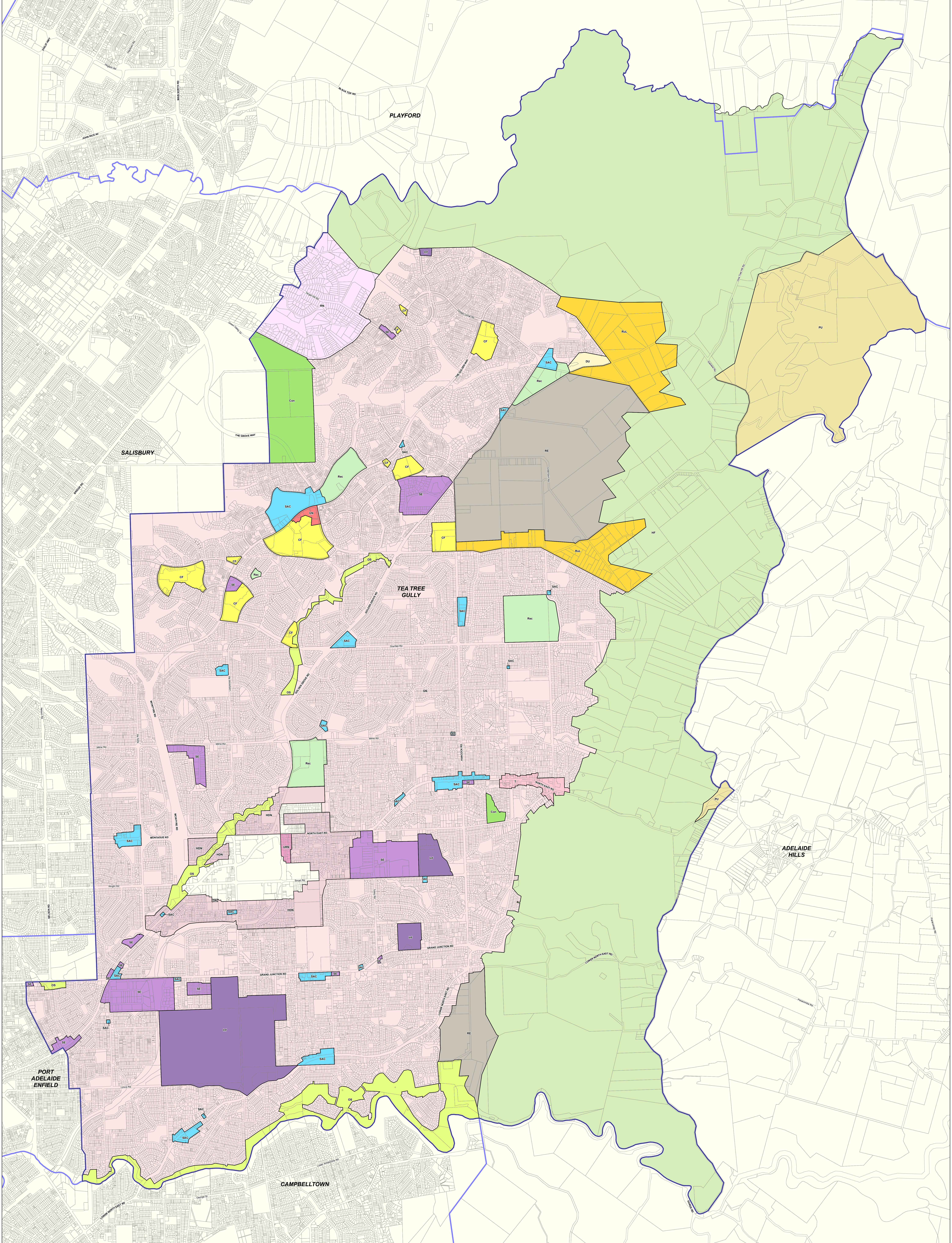
While every reasonable effort has been made to ensure that this document is correct at the time of publication, the State of South Australia and its agencies, representatives, employees and contractors disclaim any and all liability to any person in respect to anything or the consequences of anything done or omitted to be done in reliance upon the whole or any part of this document.



# Development Plan Map

- |  |   |
|--|---|
| <p><b>Zoning</b></p> <ul style="list-style-type: none"> <li>C - Commercial</li> <li>Con - Conservation</li> <li>CU - Community</li> <li>DCA - District Centre</li> <li>DU - Deferred Urban</li> <li>HF - Hills Farm</li> <li>Inf - Infrastructure</li> <li>LCC - Local Centre</li> <li>LIn - Light Industry</li> <li>MOSS - Metropolitan Open Space System</li> <li>MEx - Mineral Extraction</li> <li>NCC - Neighbourhood Centre</li> <li>OS - Open Space</li> <li>PHOTOPLU - Primary Production (Mount Lofty Ranges)</li> <li>R - Residential</li> <li>Rec - Recreation</li> <li>RuL - Rural Living</li> <li>T - Township</li> <li>UC - Urban Core</li> <li>WPLMLR - Watershed Protection (Mount Lofty Ranges)</li> </ul> | <p><b>Policy Area</b></p> <ul style="list-style-type: none"> <li>1 - Millie Road</li> <li>10 - Main Street</li> <li>11 - Residential Growth</li> <li>14 - Golden Grove East</li> <li>15 - Golden Grove Residential</li> <li>16 - Golden Grove South</li> <li>17 - Target Hill</li> <li>18 - Central Linear</li> <li>19 - Eastern Core</li> <li>2 - Golden Grove District Centre</li> <li>20 - Western Core</li> <li>21 - Cross Road</li> <li>3 - Golden Grove Light Industry</li> <li>5 - Golden Grove Local Centre</li> <li>6 - Linear Park River Torrens</li> <li>7 - Golden Grove Neighbourhood Centre</li> </ul> <p><b>Precinct</b></p> <ul style="list-style-type: none"> <li>1 - Golden Grove Commercial</li> <li>2 - Golden Grove Community</li> <li>3 - Golden Grove Core Retail</li> <li>4 - Golden Grove Dining</li> <li>5 - Golden Grove Mixed Use</li> <li>6 - Golden Grove Peripheral</li> <li>7 - Amalgamation</li> </ul> |
|--|---|





# Tea Tree Gully

## 2019 Code Consultation Map

### P&D Code Zones

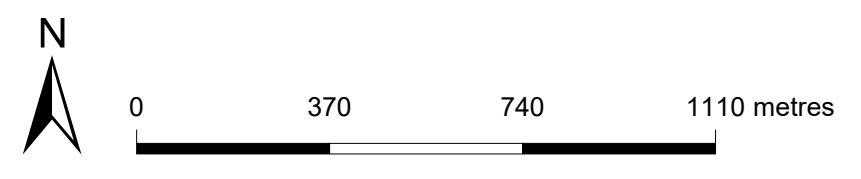
**DRAFT**

- Township
- Infrastructure & Movement Systems
- Community Facilities
- People & Neighbourhoods - Residential
- Deferred Urban
- General Neighbourhood
- Housing Diversity Neighbourhood
- Residential Neighbourhood

- Peri-Urban
- Resource Extraction
- Resilient Communities & Environment
- Conservation
- Hills Face
- Open Space
- Recreation
- Local government boundary

- Productive Economy - Primary Industry
- Peri-Urban
- Resource Extraction
- Resilient Communities & Environment
- Conservation
- Hills Face
- Open Space
- Recreation
- Local government boundary

- Cadastre



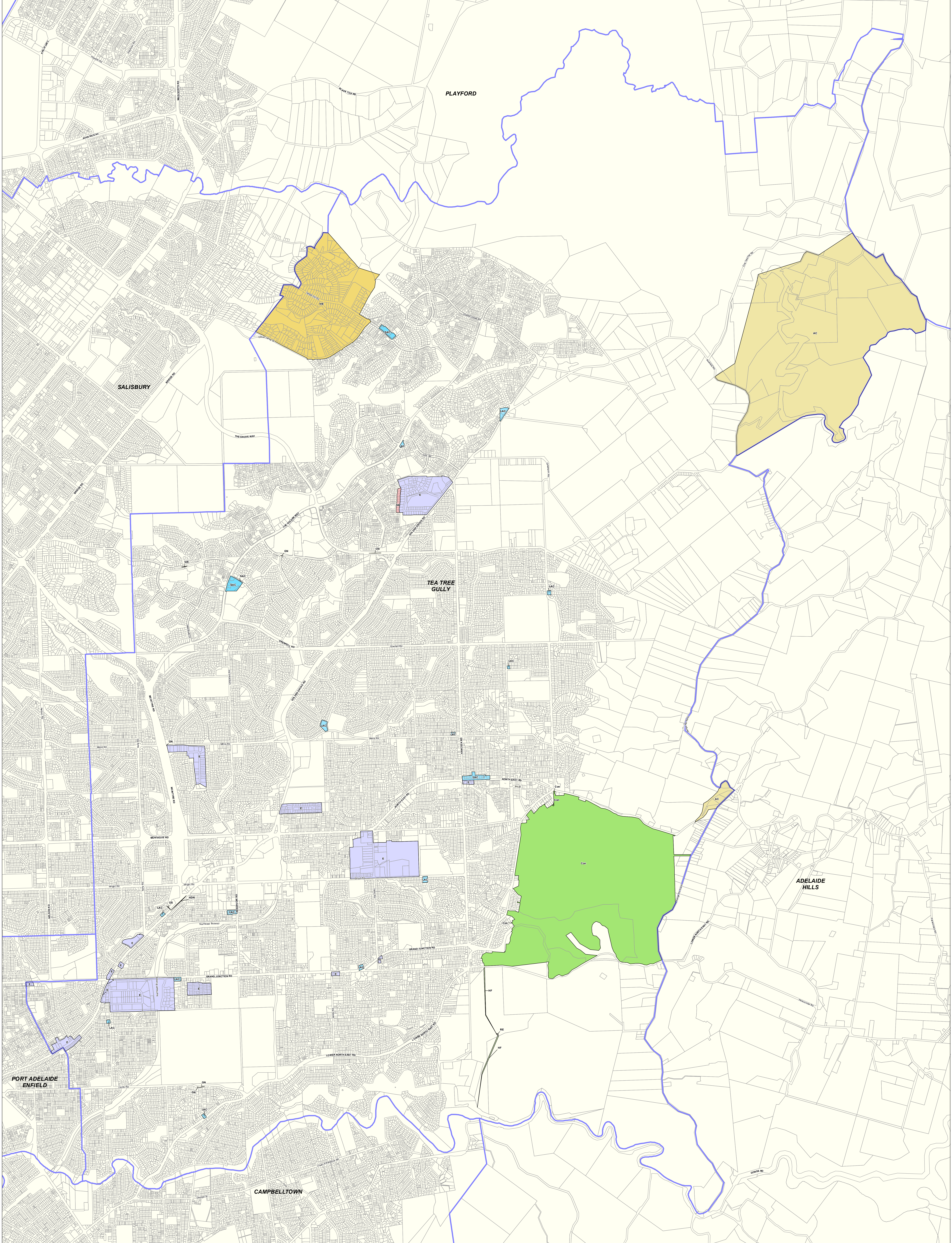
Produced by Department of Planning, Transport and Infrastructure  
 Planning and Land Use Services  
 GPO Box 1815 Adelaide SA 5001  
 www.sa.gov.au  
 Lambert Conformal Conic  
 Projection  
 Compiled 30 September 2019

While every reasonable effort has been made to ensure that this document is correct at the time of publication, the State of South Australia and its agencies, instrumentalities, employees and contractors, disclaim any and all liability to any person in respect to anything or the consequence of anything done or omitted to be done in reliance upon the whole or any part of this document.



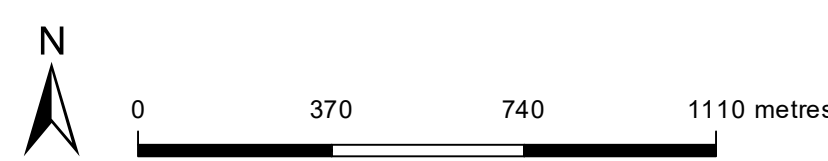
- P&D Code Zones Abbreviations**
- CF - Community Facilities
- Con - Conservation
- DU - Deferred Urban
- GN - General Neighbourhood
- HND - Housing Diversity Neighbourhood
- HF - Hills Face
- Inf - Infrastructure
- OS - Open Space
- PU - Peri-Urban
- RE - Resource Extraction
- RUL - Residential Neighbourhood
- RUR - Recreation
- RL - Rural Living
- SAC - Suburban Activity Centre
- SE - Suburban Employment
- T - Township
- UN - Urban Neighbourhood
- URN - Urban Renewal Neighbourhood





# Tea Tree Gully

## 2020 Updated Code Consultation Map



### P&D Code Zones DRAFT

- |                                       |                                       |                           |
|---------------------------------------|---------------------------------------|---------------------------|
| People & Neighbourhoods - Residential | Suburban Activity Centre              | Local government boundary |
| General Neighbourhood                 | Employment                            | Cadastre                  |
| Hills Neighbourhood                   | Productive Economy - Primary Industry |                           |
| Housing Diversity Neighbourhood       | Resource Extraction                   |                           |
| Suburban Neighbourhood                | Resilient Communities & Environment   |                           |
| Township                              | Conservation                          |                           |
| Local Activity Centre                 | Hills Face                            |                           |
|                                       | Open Space                            |                           |

Produced by: Attorney-General's Department  
 Planning and Land Use Services  
 GPO Box 1815 Adelaide SA 5001  
 www.sa.gov.au  
 Lambert Conformal Conic  
 4 November 2020

Projection: Lambert Conformal Conic  
 Compiled: 4 November 2020

© Government of South Australia 2020  
 No part of this document may be reproduced, stored in a retrieval system, or transmitted in any form, or by any means, without the prior written permission of the publisher, the Attorney-General's Department.

While every reasonable effort has been made to ensure that this document is correct at the time of publication, the State of South Australia and its agencies, representatives, employees and contractors, disclaim any and all liability to any person in respect to anything or the consequences of anything done or omitted to be done in reliance upon the whole or any part of this document.



PLN10/181



Current Development Plan Zone	Current Development Plan Policy Area	Current Development Plan Precinct	Consultation November 2019 Code Proposal	Consultation November 2020 Code Proposal	Planning & Design Code Subzone
Commercial	Milne Road Policy Area 1		Suburban Employment	Employment	
Commercial			Suburban Employment	Employment	
Community			Community Facilities	Community Facilities	
Conservation			Conservation	Conservation	
Deferred Urban			Deferred Urban	Deferred Urban	
District Centre	Golden Grove District Centre	Golden Grove Commercial	Suburban Activity Centre	Suburban Activity Centre	
District Centre	Golden Grove District Centre	Golden Grove Community	Community Facilities	Community Facilities	Neighbourhood subzone (split)
District Centre	Golden Grove District Centre	Golden Grove Core Retail	Suburban Activity Centre	Suburban Activity Centre	
District Centre	Golden Grove District Centre	Golden Grove Dining	Suburban Activity Centre	Suburban Activity Centre	
District Centre	Golden Grove District Centre	Golden Grove Mixed Use	Urban Neighbourhood	Urban Neighbourhood	
District Centre	Golden Grove District Centre	Golden Grove Peripheral	Suburban Activity Centre	Suburban Activity Centre	
District Centre			Suburban Activity Centre	Suburban Activity Centre	
Hills Face			Hills Face	Hills Face	
Infrastructure			Infrastructure	Infrastructure	
Light Industry	Golden Grove Light Industry Policy Area 3		Suburban Employment	Employment	
Light Industry			Suburban Employment	Employment	
Local Centre	Golden Grove Local Centre		Suburban Activity Centre	Local Activity Centre	
Local Centre			Suburban Activity Centre	Local Activity Centre	
Metropolitan Open Space System	Linear Park River Torrens		Open Space	Open Space	
Metropolitan Open Space System	Milne Road Policy Area 1		Open Space	Open Space	
Mineral Extraction			Resource Extraction	Resource Extraction	
Neighbourhood Centre	Crouch Road		Suburban Activity Centre	Suburban Activity Centre	
Neighbourhood Centre	Golden Grove Neighbourhood Centre		Suburban Employment	Suburban Activity Centre	
Neighbourhood Centre			Suburban Activity Centre	Suburban Activity Centre	

Current Development Plan Zone	Current Development Plan Policy Area	Current Development Plan Precinct	Consultation November 2019 Code Proposal	Consultation November 2020 Code Proposal	Planning & Design Code Subzone
Open Space			Open Space	Open Space	
Primary Production (Mount Lofty Ranges)			Peri-urban	Adelaide Country	
Recreation			Recreation	Recreation	
Residential	Golden Grove East		General Neighbourhood	General Neighbourhood	
Residential	Golden Grove Residential		General Neighbourhood	General Neighbourhood	
Residential	Golden Grove South		General Neighbourhood	General Neighbourhood	
Residential	Residential Growth	Amalgamation	Urban Renewal Neighbourhood	Urban Renewal Neighbourhood	
Residential	Residential Growth		Housing Diversity Neighbourhood Zone	Housing Diversity Neighbourhood	
Residential	Target Hill		Residential Neighbourhood	Hills Neighbourhood	
Residential			General Neighbourhood	General Neighbourhood	
Rural Living			Rural Living	Rural Living	
Township	Central Linear		Township	Township	
Township	Eastern Core		Township	Township	
Township	Western Core		Township	Township	
Urban Core	Main Street		Urban Activity Centre	Urban Activity Centre	
Urban Core			Urban Activity Centre	Urban Activity Centre	
Watershed Protection (Mount Lofty Ranges)			Peri-urban	Adelaide Country	