



ROAD CRASHES in South Australia

Statistical Summary of Road Crashes & Casualties in 2013



Prepared by the Road Crash Information Unit

Only available in electronic format from the Department of Planning, Transport and Infrastructure's Road Safety website:
<http://dpti.sa.gov.au/towardszerotogether>

Further Information

For further information concerning road crash statistics for South Australia, write to the

Road Crash Information Unit
Road Asset Management Section
Transport Services Division
Department of Planning, Transport and Infrastructure
GPO Box 1533,
ADELAIDE SA 5000
Email: DPTI.enquiriesadministrator@sa.gov.au

Full Title: Road Crashes in South Australia: Statistical Summary of Road Crashes & Casualties in 2013

Type of Report and Period Covered: Statistical, 2013

Pages: 71

Key Words: crash, crash rate, casualty, serious injury, age, blood alcohol concentration, day, hour, fatality, month, road user, severity, sex, vehicle movement, year

The data presented in this report is for information purposes only and should be used with care before drawing conclusions not contained in this report. Numbers may not match with future publications due to the database continually being updated with new information.

Summary Data for 2013

	Number	Percentage
CRASHES		
Fatal Crashes	89	0.53%
Serious Injury Crashes	666	3.99%
Minor Injury Crashes	5 037	30.21%
Property Damage Crashes	10 883	65.26%
TOTAL	16 675	100.00%
CASUALTIES		
Fatalities	97	1.35%
Serious Injuries	790	11.01%
Minor Injuries	6 290	87.64%
TOTAL	7 177	100.00%
OTHER DATA		
Vehicles on register¹	1 305 461	
Fatalities per 10 000 vehicles	0.74	
Serious Injuries per 10 000 vehicles	6.05	
Casualties per 10 000 vehicles	54.98	
Licence holders²	1 185 641	
Driver/rider fatalities per 10 000 licence holders	0.51	
Driver/rider serious injuries per 10 000 licence holders	4.33	
Driver/rider casualties per 10 000 licence holders	40.50	
Population³	1 670 834	
Fatalities per 100 000 population	5.81	
Serious Injuries per 100 000 population	47.28	
Casualties per 100 000 population	429.55	

¹ Excludes tractors, trailers, caravans, plant and equipment. Source: Registration and Licensing, Dept for Planning, Transport & Infrastructure, June 2013.

² No. of individual licence holders (including learner's permits). Source: Registration and Licensing, Dept for Planning, Transport & Infrastructure, June 2013.

³ Estimated resident population. Source: *Australian Demographic Statistics*, ABS, cat. no. 3101.0, June 2013.

Contents

SUMMARY DATA FOR 2013	1
KEY POINTS 2013	4
PREFACE	5
How crashes are processed?	5
Scope	5
Related Publications	5
Acknowledgements	5
Definitions & Explanatory Notes	6
CRASH AND CASUALTY TRENDS	8
Table 1 Trend in South Australia, 1994 – 2013	9
Figure 1 Data Trends in SA, 1994 – 2013	10
Figure 2 Fatality Rates in SA, 1994 – 2013	10
Table 2 Comparison with other Australian States and countries, 2012	11
Table 3 Road Crash Fatalities by Age Group compared with Deaths of All Causes, 2012	11
Table 4 Casualties by Road User Type and Severity, 1994 – 2013	12
Table 5 Casualties by Age Group and Severity, 1994 – 2013	13
Table 6 Casualties by Sex and Severity, 1994 – 2013	14
Table 7 Crashes and Casualties by Region and Severity, 1994 – 2013	15
ROAD CRASHES in 2013	16
Time Distribution of Crashes	
Table 8 Crashes and Casualties during Holiday Periods by Severity	17
Table 9a Casualty Crashes by Time of Day, Day of Week	18
Figure 3 Casualty Crashes by Time of Day, Day of Week	18
Table 9b Casualties by Time of Day, Day of Week	19
Table 9c All Crashes by Time of Day, Day of Week	19
Table 10 Crashes and Casualties by Month of Year and Severity	20
Crash Type	
Table 11a Crashes and Casualties by Crash Type and Severity: <i>Metropolitan Adelaide</i>	21
Table 11b Crashes and Casualties by Crash Type and Severity: <i>Rural</i>	21
Table 11c Crashes and Casualties by Crash Type and Severity: <i>South Australia</i>	22
Table 12 Hit Fixed Object Crashes by Object First Hit and Severity	22
Table 13 Single Vehicle Crashes by Motor Vehicle Type and Severity	22
Figure 4 DCA Table	23
Table 14a Crashes and Casualties by DCA and Severity: <i>Metropolitan Adelaide</i>	24
Table 14b Crashes and Casualties by DCA and Severity: <i>Rural</i>	26
Table 14c Crashes and Casualties by DCA and Severity: <i>South Australia</i>	28
Location & Distribution of Crashes	
Table 15a Crashes and Casualties by Location Type and Severity: <i>Metropolitan Adelaide</i>	30
Table 15b Crashes and Casualties by Location Type and Severity: <i>Rural</i>	30
Table 15c Crashes and Casualties by Location Type and Severity: <i>South Australia</i>	31
Table 16a Crashes and Casualties by Traffic Control and Severity: <i>Metropolitan Adelaide</i>	32
Table 16b Crashes and Casualties by Traffic Control and Severity: <i>Rural</i>	32
Table 16c Crashes and Casualties by Traffic Control and Severity: <i>South Australia</i>	33
Table 17 Crashes and Casualties by Area Speed Limit, Region & Severity	34
Table 18 Crashes and Casualties by Light Conditions, Region & Severity	34
Table 19 Crashes and Casualties by Vertical Alignment, Region & Severity	35
Table 20 Crashes and Casualties by Horizontal Alignment, Region & Severity	35
Table 21 Crashes and Casualties by Road Moisture, Region & Severity	36
Table 22 Crashes and Casualties by Route and Severity	36
Table 23a Crashes and Casualties by Local Government Area and Severity: <i>Metropolitan Adelaide: Local Government Roads</i>	37
Table 23b Crashes and Casualties by Local Government Area and Severity: <i>Metropolitan Adelaide: DPTI Roads</i>	38
Table 23c Crashes and Casualties by Local Government Area and Severity: <i>Metropolitan Adelaide: All Roads</i>	39
Table 24a Crashes and Casualties by Local Government Area and Severity: <i>Rural: Local Government Roads</i>	40
Table 24b Crashes and Casualties by Local Government Area and Severity: <i>Rural: DPTI Roads</i>	43
Table 24c Crashes and Casualties by Local Government Area and Severity: <i>Rural: All Roads</i>	44
Table 25a Top Intersections, Casualty Crashes, Base Year 2013	46
Table 25b Top Intersections, All Crashes, Base Year 2013	47

Motor Vehicle Type, Movement & Involvement

Table 26	Motor Vehicles Involved in and Responsible for Crashes by Region and Severity	48
Table 27	Crashes and Casualties by Vehicle Movement of Motor Vehicle Responsible and Severity	49
Table 28	Crashes and Casualties Involving by Pedestrian Responsible Movement and Severity	49
Table 29	Crashes by Motor Vehicle Type Involved and Severity	50

Speed Involvement

Table 30	Crashes and Casualties by Speed Involvement and Severity	50
----------	--	----

CASUALTIES in 2013

Road User

Table 31	Casualties by Road User Type, Severity, Age & Sex	52
Table 32	Casualties by Unit Type and Severity	53
Table 33	Passenger Vehicle Casualties by Position in Vehicle and Severity	53

Seatbelts & Helmets

Table 34	Casualties by Casualty Type, Safety Device and Severity	54
----------	---	----

Alcohol

Table 35a	Driver and Motorcyclist Casualties by Sex, Age, BAC: <i>Fatal</i>	55
Table 35b	Driver and Motorcyclist Casualties by Sex, Age, BAC: <i>Serious Injury</i>	56
Table 35c	Driver and Motorcyclist Casualties by Sex, Age, BAC: <i>Minor Injury</i>	57

Drugs

Table 36a	Driver and Motorcyclist Casualties by Sex, Age, Drug: <i>Fatal</i>	58
Table 36b	Driver and Motorcyclist Casualties by Sex, Age, Drug: <i>Serious Injury</i>	59
Table 36c	Driver and Motorcyclist Casualties by Sex, Age, Drug: <i>Minor Injury</i>	60

Responsibility

Table 37a	Road User Involved In and Responsible for Crashes by Age & Sex: <i>Fatal Crash</i>	61
Table 37b	Road User Involved In and Responsible for Crashes by Age & Sex: <i>Serious Injury Crash</i>	62
Table 37c	Road User Involved In and Responsible for Crashes by Age & Sex: <i>Minor Injury Crash</i>	63
Table 37d	Road User Involved In and Responsible for Crashes by Age & Sex: <i>Property Damage Crash</i>	64
Table 37e	Road User Involved In and Responsible for Crashes by Age & Sex: <i>All Crashes</i>	65
Table 38	Drivers & Motorcycle Riders Involved in and Responsible for Crashes by Licence Type and Severity	66
Table 39a	Drivers & Motorcycle Riders Responsible for Crashes by Sex, Age and Licence Type: <i>Fatal Crash</i>	66
Table 39b	Drivers & Motorcycle Riders Responsible for Crashes by Sex, Age and Licence Type: <i>Serious Injury Crash</i>	67
Table 39c	Drivers & Motorcycle Riders Responsible for Crashes by Sex, Age and Licence Type: <i>Minor Injury Crash</i>	67
Table 39d	Drivers & Motorcycle Riders Responsible for Crashes by Sex, Age and Licence Type: <i>Property Damage Crash</i>	68
Table 39d	Drivers & Motorcycle Riders Responsible for Crashes by Sex, Age and Licence Type: <i>All Crashes</i>	68

REFERENCE INFORMATION

Demographic Data

Table 40	Estimated Population by Age and Sex	70
Table 41	Licence and Permit Holders by Age and Sex	70

Vehicle Information

Table 42	Motor Vehicle on Register by Vehicle Type	71
Table 43	Vehicle Kilometres Travelled	71

Key Points 2013

- A total of 16 675 crashes were processed for South Australia in 2013 – 89 fatal crashes, 666 serious injury crashes, 5037 minor injury crashes and 10 883 property damage crashes. This resulted in 97 fatalities, 790 serious injuries and 6290 minor injuries.
- The estimated cost of crashes to the community in 2013 was \$718 million
- The 97 fatalities that occurred in 2013 were the second lowest since official DPTI recording began in 1967. The fatality rate per 100 000 population was 5.81.
- The number of persons serious injured in 2013 had increased by 29 (4%) from 761 the previous year to 790 this year – again below the 2020 Serious Injury target of less than 800 set out in *South Australia's Road Safety Strategy 2020 – Towards Zero Together*.
- Rural South Australian roads accounted for 16% of all crashes, but 54% of fatal crashes¹.
- Single Vehicle crashes made up 25% of the 16 675 crashes with 31% occurring in rural South Australia. 63% of fatal crashes were single vehicle crashes, of which 56% occurred in rural areas.
- Of the drivers and passengers killed in 2013, 31% were not wearing a seatbelt at the time of the crash; 2% of those vehicle occupants reported injured were recorded as not wearing a seatbelt.
- Five cyclists were killed in 2013, all 5 were wearing a helmet; 2% of those reported injured failed to wear a helmet.
- 12 fatalities in 2013 were motorcycle riders. All riders were male. 84% of those motorcyclists (incl. pillion passengers) reported injured were male.
- Pedestrians in 2013 were more likely to receive fatal or serious injuries when involved in a crash – 28% of pedestrians involved in a crash were either killed or seriously injured compared to 15% amongst motorcycle riders involved, 9% amongst bicycle riders involved and 2% among vehicle drivers involved.
- 24 people aged 70 years or older were killed in 2012. Those aged 70+ accounted for 25% of total fatalities, 10% of serious injuries and 7% of minor injuries. 7 out of 15 of pedestrian fatalities were over the age of 70 and 15% of reported pedestrian serious injuries were of this age. However, 12% of the population is represented by people of this age. 23% of drivers killed were age 70 years or older.
- There were 15 fatalities recorded in the 16-24 age group. This is a reduction on the 5 year average (2008-2012) of 26 fatalities per year.
- 25% of the all drivers and motorcycle riders tested who were killed had a blood alcohol concentration over 0.05g/100ml. Of those known tested that were seriously injured 12% had a BAC over 0.05. All male casualties were almost over 3 times more likely to be over the limit compared to females.
- 18% of the all drivers and motorcycle riders tested who were killed were positive for one or a combination of THC (cannabis), MDMA (Ecstasy) or Methamphetamines. Of those known tested that were seriously injured 15% were positive for one or a combination of drugs.

¹ Rural and Metro boundaries have changed from 1 January 2013 to align with new ABS Greater Adelaide City Statistical Area boundaries – For more information please look at *Preface* and *Definitions & Explanatory Notes*

Preface

This publication presents information compiled from police reported crashes in South Australia for 2013 and is the forty-sixth edition in an annual series that commenced with 1967 data.

How crashes are reported and processed?

Currently when a reportable road crash occurs, South Australia Police (SAPOL) collect the data through vehicle crash reports, which are entered into their Vehicle Collision System (VCS). The reports are then electronically forwarded to the Road Crash Information Unit of the Department for Planning, Transport and Infrastructure (DPTI) for further processing and geocoding. The information is checked for accuracy and consistency to ensure the reliability of any published statistics. Processed crash data is stored in the DPTI 'Road Crash Database' (TARS).

The data presented in this report is for information purposes only and should be used with care before drawing conclusions not contained in this report. Details in this publication may differ from information previously released or published due to the database continually being updated with new information. Road crash information contained in this publication is derived from TARS.

Scope

The crash statistics included in this publication are confined to those crashes which:

- were reported to the police;
- occurred on a road defined in the Road Traffic Act 1961;
- were defined by the ATSB publication "*Guidelines For Determining Events as Road Crashes in Australia*" (published March 2000)
- involved at least one moving vehicle
- involved at least one person being killed or injured, vehicle towed away, or total property damage of \$5000 or greater
- included all bicycles, motorcycles, scooters, mopeds irrespective of damage value or injury level)

From 1 January 2013, DPTI only processed 'property damage' crashes with an aggregated damage value of \$5000 or greater. This represents a change from previous reporting, where the value of 'property damage' crashes processed by DPTI since July 2003 was \$3000. Preceding this, property damage crash value was \$1000 introduced in 1 January 1998.

Related Publications

All monthly and annual statistical reports are available from DPTI's Road Safety website

Road Fatalities in South Australia (monthly)

Road Fatalities Involving Heavy Vehicles in South Australia (monthly)

Road Crash Serious Injuries in South Australia (monthly)

Road Crash Serious Injuries Involving Heavy Vehicles in South Australia (monthly)

Road Crashes in South Australia annual reports

South Australian Road Safety Progress Report (Quarterly)

Road Safety Fact Sheets

Acknowledgements

Acknowledgment is extended to the South Australian Police for supply of reported road crash reports.

Notes

From 1 January 2013, new ABS boundaries were introduced into the coding corresponding to the Greater Adelaide City Statistical Area into replacing the previous metro/rural boundaries. As a consequence, Mt Barker and Adelaide Hills Council, part of Mallala, Barossa and Light Councils are now incorporated into Metropolitan Adelaide

Definitions & Explanatory Notes

BAC	Blood Alcohol Concentration (mg/100mL).
Bicycle	Any two or three wheeled device operated solely by pedals and propelled by human power
Bicycle Rider	A person occupying the controlling position of a bicycle
Bicyclist	A bicycle or passenger.
Driver	A controller of a motor vehicle other than a motorcycle or bicycle.
Drug	Methamphetamine, MDMA (Ecstasy) and/or THC (cannabis)
DPTI	Department of Planning, Transport & Infrastructure
Casualty	Any person killed or injured as a result of a crash.
Casualty Crash	Crash where someone had been killed or injured as a result of the crash.
Fatal Crash	A crash where there is at least one fatality.
Fatality	A person who dies within 30 days of a crash as a result of injuries sustained in that crash.
Heavy Vehicle	Heavy vehicle includes the following vehicle types: Rigid truck, Semi Trailer, Bus, B Double.
Intersection Crash	A crash for which the first impact occurs at or within 20 metre radius of an intersection.
Metropolitan	Greater Adelaide City Statistical Area. Comprises of the following local government areas: Adelaide, Burnside, Campbelltown, Charles Sturt, Holdfast shores, Marion, Mitcham, Norwood, Payneham & St Peters, Onkaparinga, Playford, Port Adelaide & Enfield, Prospect, Salisbury, Tea Tree Gully, Unley, Walkerville, West Torrens, Adelaide Hills, Mount Barker, Gawler and part of Barossa, Light and Mallala councils.
Mid-block Crash	A crash that occurs between two intersections.
Minor Injury	A person who sustains injuries requiring medical or surgical treatment, either by a doctor or in a hospital, but is not admitted to hospital, as a result of a road crash and who does not die as a result of those injuries within 30 days of the crash.
Minor Injury Crash	A crash where at least one person sustains injuries by not person is admitted to hospital or dies within 30 days of the crash.
Motor Vehicle	Any road vehicle which is mechanically or electrically powered but not operated on rails.
Motorcycle	Any mechanically or electrically propelled two or three wheeled with or without side-car includes solo motorcycle, motorcycle with sidecar, motor scooter, mini-bike, and scooter.
Motorcycle Rider	A person occupying the controlling portion of a motorcycle.
Motorcyclist	Motorcycle rider or pillion passenger
Other Road User	Occupants/controllers of animal drawn vehicles, ridden animals, railway vehicles, tram, and other defined special vehicle.
Other Vehicle Type	Animal drawn vehicles, ridden animals, railway vehicles, tram, and other defined special vehicle
Passenger	Any person, other than the controller, who is in, on, boarding, entering, alighting or falling from a road vehicle at the time of the crash, provided a portion of the person is in/on the road vehicle.
Passenger Vehicle	Include all cars and car derivatives including 4WDs, vans, ute and station wagons. Excludes heavy vehicles, light trucks (<4.5 tonnes) motorcycles and bicycles.
Pedestrian	Any person who is standing, walking, playing, lying on the road or alighting or boarding a road vehicle at the time of the crash. It does not include those that have fallen from a vehicle. Also includes riders and passengers of motorised wheelchairs/wheelchairs and small wheeled vehicle users.

Pillion Passenger	A passenger on but not controlling a motorcycle.
Property Damage Crash	A crash resulting in property damage in excess of \$5000 and in which no person is injured or dies within 30 days of the crash. Or when one vehicle has been towed away.
Road Crash	Any apparent unpremeditated event reported to the police and resulting in death, injury or property damage in excess of the prescribed amount, and attributed to the movement of the road vehicle on a road.
Road User	Any person who is a pedestrian, rider, or the occupant of a road vehicle.
Rural	Area outside of metropolitan Adelaide. Comprises of the following local government areas: Ceduna, Cleve, Elliston, Franklin Harbor, Kimba, Lower Eyre Peninsula, Port Lincoln, Streaky Bay, Tumby Bay, Whyalla, Cooper Pedy, Finders Rangers, Port Augusta, Roxby Downs, Alexandrina, Kangaroo Island, Victor Harbor, Yankalilla, Grant, Mount Gambier, Naracoorte Lucindale, Robe, Tatiara, Wattle Range, Berri & Barmera, Karoonda East Murray, Loxton Waikerie, Mid Murray, Murray Bridge, Renmark Paringa, Southern Mallee, The Coorong, Barunga West, Calre & Gilbert Valleys, Copper Coast, Goyder, Mount Remarkable, Northern Areas, Orroroo/Carrieton, Peterborough, Port Pirie, Wakefield, Yorke Peninsula and part of Barossa, Light and Mallala councils.
Serious Casualty	A fatality or serious injury
Serious Casualty Crash	A crash where at least one fatality or serious injury occurs.
Serious Injury	A person who sustains injuries and is admitted to hospital for a duration of 24 hours or more as a result of a road crash and who does not die as a result of those injuries within 30 days of the crash.
Serious Injury Crash	A non-fatal crash in which at least one person is seriously injured.
Vehicle Occupant	Driver or passenger in passenger, heavy or unknown motor vehicle

Speed definition

Based on NSW Roads and Traffic Authority criteria for determining whether or not a crash is to be considered as having involved speeding as a contributing factor. A motor vehicle is assessed as having been speeding if it satisfies the conditions described below:

- (a) The vehicle's controller (driver or rider) was charged with a speeding offence; or the vehicle was described by police as travelling at excessive speed; or the stated speed of the vehicle was in excess of the speed limit; or the vehicle weight or the speed of the vehicle was faster than that allowed for the licence class of the driver or rider, or the vehicle weight OR
- (b) The vehicle was performing a manoeuvre characteristic of excessive speed, that is:
- while on a curve the vehicle jack-knifed, skidded, slid or the controller lost control; or
 - the vehicle ran off the road while negotiating a bend or turning a corner and the controller was not distracted by something or disadvantaged by drowsiness or sudden illness and
 - was not swerving to avoid another vehicle, animal or object and the vehicle did not suffer equipment failure.

CRASH & CASUALTY TRENDS

Historical Data

Fatality Rates

Interstate and International Comparisons

Causes of Death

Road User Type

Age & Sex

Region

Table 1: Trends in South Australia, 1994 - 2013

Year	Crashes						Casualties				Vehicles on Register ¹ (‘000)	Licence Holders ² (‘000)	Population ³ (‘000)	Vehicle kilometers traveled ⁴ (‘000 000)	Fatalities per			
	Fatal Crashes	Serious Injury Crashes	Minor Injury Crashes	TOTAL Casualty Crashes	Property Damage Crashes	ALL Crashes	Fatalities	Serious Injuries	Minor Injuries	ALL Casualties					10, 000 vehicles	10,000 licence holders ⁵	100,000 population	100 million VKT
1994	145	1184	5081	6410	32419	38829	163	1514	6492	8169	931	964	1466	-	1.75	0.91	11.12	-
1995	164	1185	5097	6446	32844	39290	182	1521	6638	8341	945	975	1469	13195	1.93	0.98	12.39	1.38
1996	162	1324	5023	6509	32432	38941	181	1720	6775	8676	959	979	1474	-	1.89	1.09	12.28	-
1997	124	1168	5138	6430	32442	38872	149	1509	6716	8374	969	995	1479	-	1.54	0.80	10.07	-
1998	152	1225	5551	6928	32664	39592	168	1566	7345	9079	995	995	1487	13974	1.69	0.85	11.30	1.20
1999	132	1238	6047	7417	34287	41704	153	1607	8071	9831	1010	1012	1493	13081	1.52	0.85	10.25	1.17
2000	151	1229	6433	7813	33172	40985	166	1627	8501	10294	1011	1025	1498	13153	1.64	1.04	11.08	1.26
2001	137	1245	6351	7733	33041	40774	154	1603	8497	10254	1023	1045	1502	15085	1.51	0.85	10.25	1.02
2002	138	1199	6249	7586	32525	40111	154	1538	8382	10074	1045	1047	1522	14855	1.47	0.88	10.12	1.04
2003	135	1169	5786	7090	23220	30310	156	1470	7597	9223	1034	1052	1527	14963	1.51	0.85	10.21	1.04
2004	128	1070	5518	6716	15186	21902	139	1330	7294	8763	1049	1072	1534	15241	1.32	0.92	9.06	0.91
2005	126	994	5103	6223	14580	20803	147	1296	6626	8069	1065	1094	1542	14533	1.38	0.84	9.53	1.01
2006	104	1091	4992	6187	14089	20276	117	1357	6473	7947	1085	1042	1555	15535	1.08	0.77	7.53	0.75
2007	108	1083	5277	6468	14829	21297	125	1361	6944	8430	1107	1073	1585	14212	1.13	0.62	7.89	0.88
2008	87	996	5614	6697	14771	21468	99	1218	7173	8490	1171	1094	1602	-	0.85	0.56	6.18	-
2009	104	909	5216	6229	15098	21327	119	1109	6621	7849	1201	1135	1623	-	0.99	0.65	7.33	-
2010	105	886	5422	6413	15496	21909	118	1050	6905	8073	1226	1136	1645	14615	0.96	0.64	7.17	0.81
2011	95	780	5474	6349	16583	22932	103	931	6900	7934	1265	1141	1657	-	0.81	0.53	6.22	-
2012	86	637	5369	6092	16412	22504	94	761	6618	7473	1285	1155	1655	16313	0.73	0.56	5.68	0.58
2013	89	666	5037	5792	10883	16675	97	790	6290	7177	1305	1186	1671	-	0.74	0.51	5.81	-

¹ At 30 June. Excludes tractors, trailers, caravans, plant and equipment. Source: TRUMPS database, Registration & Licensing Section, DPTI

² At 30 June. Source: TRUMPS database, Registration & Licensing Section, DPTI

³ Population as of 30 June. Source: Australian Bureau of Statistics, *Australian Demographic Statistics*, cat.no. 3101.0.

⁴ Travel for the year ended 30 June. Source: Australian Bureau of Statistics, *Survey of Motor Vehicle Use*, cat. no. 9208.0. From 2010 report is being released biannually. Data before this are 12 months ending 30 October

⁵ Licence holder fatality rates are based on drivers and riders fatalities only.

Notes:

From 1 July 2003, DPTI began to only process property damage crashes where the value was \$3000 or greater or the vehicle was towed away regardless of the damage value. Previous to this it was \$1000.

From 1 January 2013, DPTI began to only process property damage crashes where the value was \$5000 or greater or the vehicle was towed away regardless of the damage value

Figure 1: Data Trends in South Australia, 1994 - 2013

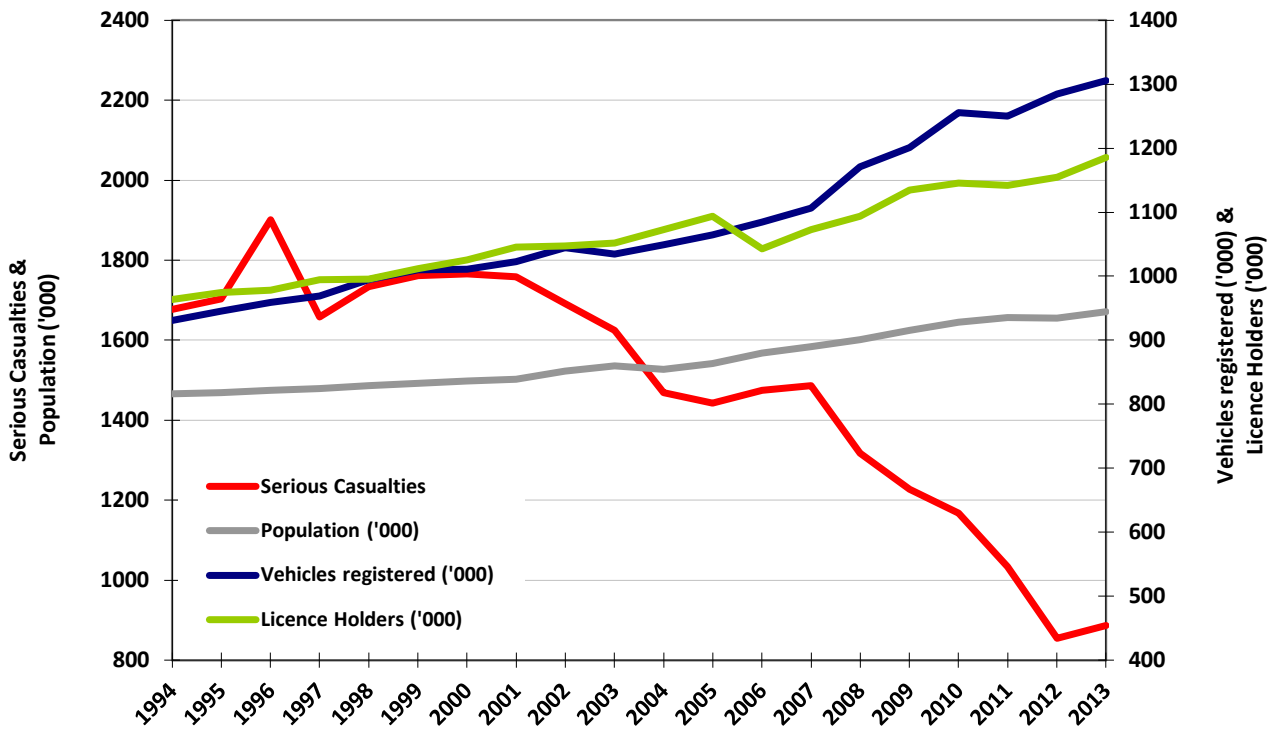


Figure 2: Fatality Rates in South Australia, 1994 - 2013

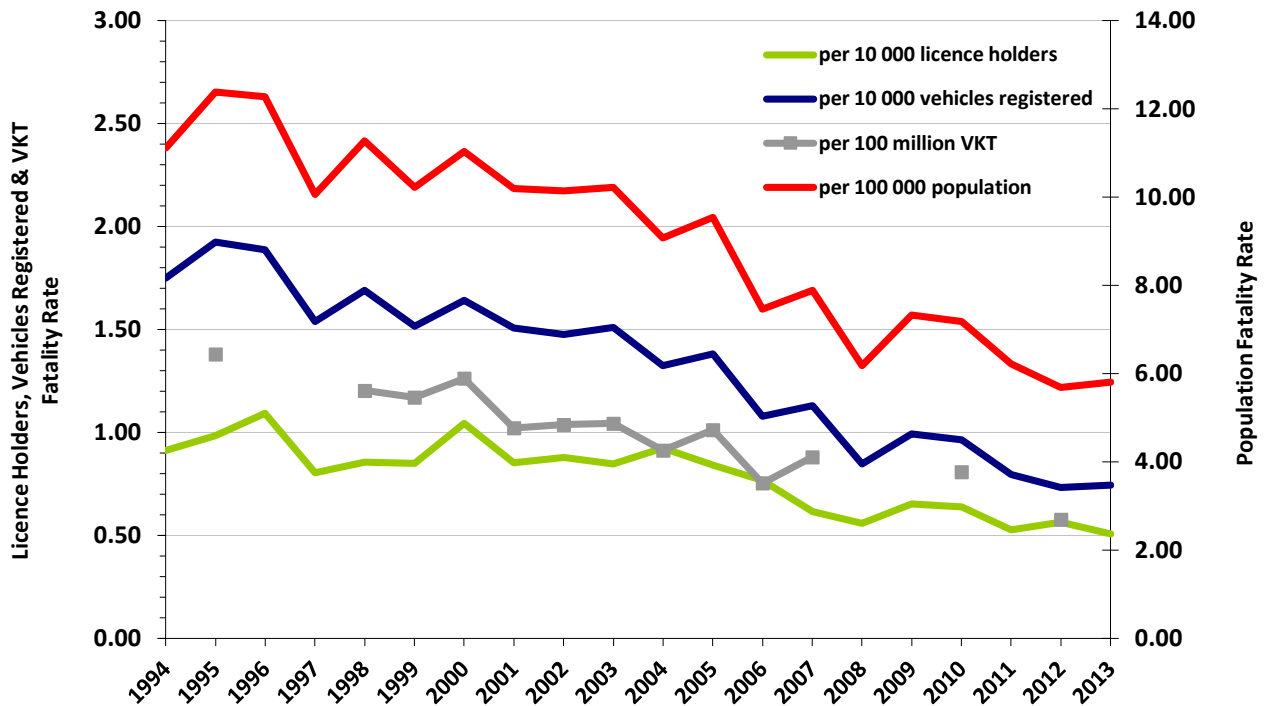


Table 2: Comparison with other Australian States¹ and countries², 2012

	Fatalities	Vehicles on register ³ ('000)	Population ⁴ ('000)	Fatalities per 10 000 vehicles	Fatalities per 100 000 population
SOUTH AUSTRALIA	94	1285	1655	0.7	5.7
New South Wales	369	4,870	7307	0.8	5.0
Victoria	282	4,286	5633	0.7	5.0
Queensland	280	3,492	4568	0.8	6.1
Western Australia	182	1,978	2438	0.9	7.5
Tasmania	31	432	512	0.7	6.1
Australian Capital Territory	12	267	375	0.4	3.2
Northern Territory	49	141	236	3.5	20.8
AUSTRALIA	1299	16751	22724	0.8	5.7
CANADA	2104	23,006	34880	0.9	6.0
DENMARK	167	2,916	5592	0.6	3.0
FRANCE	3,653	42,275	63,519	0.9	5.8
GERMANY	3,600	53,832	81,932	0.7	4.4
JAPAN	5,237	82,994	127,515	0.6	4.1
NETHERLANDS	562	10,095	16,755	0.6	3.4
NEW ZEALAND	308	3,250	4,433	0.9	6.9
NORWAY	145	3,672	5,019	0.4	2.9
SWEDEN	285	5,701	9,519	0.5	3.0
UNITED KINGDOM	1,802	35,582	63,705	0.5	2.8
UNITED STATES	33,561	265,647	313,914	1.3	10.7

Table 3: Road Crash Fatalities by Age Group compared with Deaths of All Causes, 2012

Age Groups	Deaths from All Causes ⁵	Road Fatalities ⁶	
		Number	% of All Deaths
0-14	95	5	5%
15-19	36	3	8%
20-24	43	13	30%
25-29	62	5	8%
30-34	69	3	4%
35-39	112	3	3%
40-49	411	20	5%
50-59	821	12	1%
60-69	1,419	9	1%
70+	10,110	24	0%
Unknown	-	-	-
TOTAL	13 178	97	1%

¹ Australian data based on information published by the Bureau of Infrastructure, Transport and Regional Economics (BITRE) for 2012.

² Other data based on information from BITRE report, *International Road Safety Comparisons 2012* published June 2013.

³ Australian figures (except SA) are as at 30 June 2012. Source: Australian Bureau of Statistics, *Motor Vehicle Census Australia*, cat. no. 3303.0. These figures may not agree with registration statistics for individual States and Territories. Data for SA sourced from TRUMPS, as of 30 June 2012.

⁴ Population as of 30 June. Source: Australian Bureau of Statistics, *Australian Demographic Statistics*, cat.no. 3101.0

⁵ Source: Australian Bureau of Statistics, *Deaths, Australia*, cat.no. 3302.0.

⁶ Source: DPTI's TARS road crash database

Table 4: Casualties by Road User Type and Severity, 1994 - 2013

Year	Vehicle Occupant						Motorcyclist						Pedestrian			Bicyclist			Other Road User			ALL ROAD USERS		
	Driver			Passenger			Rider			Pillion Passenger			F	SI	MI	F	SI	MI	F	SI	MI	F	SI	MI
	F	SI	MI	F	SI	MI	F	SI	MI	F	SI	MI												
1994	68	668	3409	39	417	1766	20	187	393	1	18	46	30	147	430	5	76	448	0	1	0	163	1514	6492
1995	84	648	3571	36	432	1823	12	153	359	0	22	50	40	186	411	8	80	421	2	0	3	182	1521	6638
1996	92	779	3615	40	522	1922	15	189	365	3	14	33	24	153	428	7	59	403	0	4	9	181	1720	6775
1997	67	712	3724	44	408	1749	13	144	353	1	15	31	20	147	427	4	79	427	0	4	5	149	1509	6716
1998	72	779	4213	44	383	1972	13	157	314	0	20	26	35	142	402	4	79	408	0	6	10	168	1566	7345
1999	71	749	4749	38	456	2173	15	123	277	0	14	20	26	178	419	3	84	425	0	3	8	153	1607	8071
2000	91	739	5132	37	490	2191	16	158	323	0	12	25	21	151	409	1	75	412	0	2	9	166	1627	8501
2001	76	809	5023	32	419	2298	13	156	300	1	13	21	26	143	426	6	58	417	0	5	12	154	1603	8497
2002	72	753	5012	39	434	2196	20	153	321	1	7	22	19	129	425	3	59	402	0	3	4	154	1538	8382
2003	77	783	4663	44	343	1896	12	144	280	1	19	27	17	115	359	5	63	367	0	3	5	156	1470	7597
2004	80	686	4322	23	317	1915	19	157	288	1	9	20	12	103	367	3	57	376	1	1	6	139	1330	7294
2005	74	646	3943	39	342	1598	18	125	277	2	11	19	11	111	373	3	61	415	0	0	1	147	1296	6626
2006	58	670	3772	20	302	1586	22	178	322	1	17	22	12	111	366	4	79	403	0	0	2	117	1357	6473
2007	58	687	4013	37	347	1761	8	162	408	0	10	17	17	108	328	5	47	413	0	0	4	125	1361	6944
2008	45	584	4215	24	264	1721	16	176	435	1	8	23	12	120	335	1	66	440	0	0	4	99	1218	7173
2009	60	550	4009	32	243	1481	14	159	389	1	9	15	10	89	280	2	59	443	0	0	4	119	1109	6621
2010	57	500	4207	23	211	1574	16	146	388	0	7	20	17	103	245	5	82	467	0	1	4	118	1050	6905
2011	40	444	4239	22	193	1507	20	143	361	1	9	19	17	77	269	3	61	498	0	4	7	103	931	6900
2012	52	350	4029	14	137	1431	13	113	339	2	6	14	10	77	287	3	78	508	0	0	10	94	761	6618
2013	48	384	3860	17	122	1326	12	129	369	0	5	18	15	87	231	5	63	486	0	0	0	97	790	6290

MI – Minor Injury; SI – Serious Injury; F - Fatality

Table 5: Casualties by Age and Severity, 1994 - 2013

Year	0-15			16-19			20-24			25-29			30-39			40-49			50-59			60-69			70+			Unknown			ALL CASUALTIES		
	F	SI	MI	F	SI	MI	F	SI	MI	F	SI	MI	F	SI	MI	F	SI	MI	F	SI	MI	F	SI	MI	F	SI	MI	F	SI	MI	F	SI	MI
1994	11	130	554	15	219	857	27	263	1088	20	169	680	31	225	1130	10	139	782	9	92	434	12	82	274	27	96	292	1	99	401	163	1514	6492
1995	14	132	597	22	225	884	24	255	1094	16	168	716	39	226	1056	18	154	807	10	94	450	19	69	308	20	99	330	0	99	396	182	1521	6638
1996	12	162	642	18	230	931	27	279	1002	21	203	708	26	267	1155	23	160	824	12	98	475	15	101	286	26	118	362	1	102	390	181	1720	6775
1997	8	149	603	19	194	840	21	233	973	13	149	718	28	255	1127	11	150	866	11	91	524	12	79	307	24	110	350	2	99	408	149	1509	6716
1998	10	134	623	18	251	979	17	212	1099	12	172	820	25	225	1207	21	181	889	12	103	555	14	66	315	37	120	346	2	102	512	168	1566	7345
1999	14	147	662	21	218	987	23	222	1056	11	136	904	22	225	1337	18	172	996	11	110	620	13	81	347	20	118	343	0	178	819	153	1607	8071
2000	11	121	547	26	212	1115	16	229	1180	23	158	893	21	225	1427	21	196	1042	10	113	698	14	81	396	24	111	376	0	181	827	166	1627	8501
2001	10	101	519	16	223	1092	14	210	1168	16	159	887	32	260	1405	14	192	1120	11	128	724	13	72	346	28	80	388	0	178	848	154	1603	8497
2002	16	107	461	16	198	1142	18	213	1159	17	164	875	28	241	1385	24	177	1088	10	104	680	5	54	349	20	108	416	0	172	827	154	1538	8382
2003	11	81	434	21	189	993	20	225	1060	11	147	750	26	244	1282	19	182	1081	18	119	701	10	62	329	20	100	331	0	121	636	156	1470	7597
2004	7	64	423	7	198	907	27	212	1044	17	134	652	26	207	1203	18	169	960	17	98	626	11	56	351	9	85	368	0	107	760	139	1330	7294
2005	8	86	348	18	173	875	28	195	921	19	115	616	16	205	1097	19	157	953	11	121	627	11	77	341	17	94	315	0	73	533	147	1296	6626
2006	3	74	440	12	181	707	17	186	930	11	129	610	17	225	1026	23	180	897	14	122	677	10	70	352	10	88	344	0	102	490	117	1357	6473
2007	6	60	398	18	171	804	16	210	968	14	137	702	14	213	1096	13	166	980	10	138	688	5	73	350	29	99	389	0	94	569	125	1361	6944
2008	5	51	438	16	157	811	12	178	922	10	114	697	19	212	1154	9	164	1065	13	111	797	4	74	434	11	91	365	0	66	490	99	1218	7173
2009	4	60	394	20	138	766	22	138	827	10	124	681	17	179	1120	20	132	1041	12	112	728	2	81	417	12	95	321	0	50	326	119	1109	6621
2010	5	49	397	19	110	737	12	131	846	5	121	739	16	145	1159	22	155	1008	17	112	881	8	72	406	14	120	381	0	35	351	118	1050	6905
2011	4	43	389	6	94	695	5	127	938	9	95	688	22	146	1178	22	140	1055	12	106	833	4	77	461	19	73	390	0	30	273	103	931	6900
2012	3	32	393	7	76	616	10	104	836	7	75	694	9	106	1137	16	112	996	11	91	784	9	70	464	22	73	423	0	22	275	94	761	6618
2013	6	37	349	2	50	569	13	93	757	5	81	692	6	112	1049	20	120	959	12	117	769	9	70	457	24	82	451	0	28	238	97	790	6290

MI – Minor Injury; SI – Serious Injury; F - Fatality

Table 6: Casualties by Sex and Severity, 1994 - 2013

Year	Male			Female			Unknown			ALL PERSONS		
	F	SI	MI	F	SI	MI	F	SI	MI	F	SI	MI
1994	115	968	3231	48	540	3230	0	6	31	163	1514	6492
1995	130	967	3233	52	553	3355	0	1	50	182	1521	6638
1996	132	1046	3170	48	669	3571	1	5	34	181	1720	6775
1997	98	947	3173	51	554	3488	0	8	55	149	1509	6716
1998	111	941	3277	55	605	3897	2	20	171	168	1566	7345
1999	96	965	3715	56	613	4192	1	29	164	153	1607	8071
2000	121	981	3914	45	626	4479	0	20	108	166	1627	8501
2001	113	974	3929	41	621	4504	0	8	64	154	1603	8497
2002	117	961	3951	37	574	4426	0	3	5	154	1538	8382
2003	109	914	3596	47	552	3995	0	4	6	156	1470	7597
2004	111	823	3461	28	506	3811	0	1	22	139	1330	7294
2005	108	831	3282	39	464	3319	0	1	25	147	1296	6626
2006	89	872	3072	28	485	3395	0	0	6	117	1357	6473
2007	94	864	3299	31	497	3620	0	0	25	125	1361	6944
2008	74	757	3366	25	461	3796	0	0	11	99	1218	7173
2009	93	703	3188	26	404	3416	0	2	17	119	1109	6621
2010	78	663	3258	40	386	3634	0	1	13	118	1050	6905
2011	76	583	3281	27	348	3611	0	0	8	103	931	6900
2012	72	499	3144	22	262	3464	0	0	10	94	761	6618
2013	68	502	2940	29	288	3338	0	0	12	97	790	6290

MI – Minor Injury; SI – Serious Injury; F - Fatality

Table 7: Crashes and Casualties by Region¹ and Severity, 1994 - 2013

Year	Metropolitan Adelaide ¹									Rural South Australia ¹								
	Crashes					Casualties				Crashes					Casualties			
	Fatal Crashes	Serious Injury Crashes	Minor Injury Crashes	Property Damage Crashes	ALL CRASHES	Fatalities	Serious Injuries	Minor Injuries	ALL CASUALTIES	Fatal Crashes	Serious Injury Crashes	Minor Injury Crashes	Property Damage Crashes	ALL CRASHES	Fatalities	Serious Injuries	Minor Injuries	ALL CASUALTIES
1994	65	657	4105	27433	32260	75	777	5028	5880	80	528	975	4984	6567	88	738	1463	2289
1995	77	677	4120	27726	32600	77	817	5152	6046	87	509	978	5122	6696	105	704	1486	2295
1996	68	700	4031	27232	32031	73	861	5206	6140	94	625	991	5194	6904	108	860	1568	2536
1997	52	665	4199	27194	32110	55	800	5294	6149	72	504	928	5231	6735	94	711	1410	2215
1998	65	698	4579	27285	32627	70	855	5868	6793	87	527	970	5360	6944	98	710	1474	2282
1999	56	674	5091	28790	34611	61	830	6618	7509	76	564	956	5499	7095	92	777	1454	2323
2000	63	681	5423	28055	34222	68	842	6983	7893	88	548	1009	5117	6762	98	785	1516	2399
2001	64	647	5369	27988	34068	67	768	6950	7785	73	598	983	5051	6705	87	835	1548	2470
2002	49	621	5218	27582	33470	54	754	6743	7551	89	578	1031	4942	6640	100	784	1639	2523
2003	57	585	4839	19316	24797	62	731	6188	6981	78	584	947	3902	5511	94	739	1409	2242
2004	61	577	4587	12586	17811	64	692	5907	6663	67	494	938	2810	4309	75	639	1394	2108
2005	47	514	4213	12093	16867	51	621	5301	5973	79	481	895	2708	4163	96	676	1330	2102
2006	50	619	4145	11775	16589	54	730	5159	5943	54	473	863	2583	3973	63	628	1330	2021
2007	45	615	4381	12373	17414	49	723	5568	6340	63	476	915	2714	4168	76	646	1396	2118
2008	40	557	4647	12388	17632	44	650	5770	6464	47	440	972	2699	4158	55	569	1408	2032
2009	36	495	4288	12253	17072	41	566	5315	5922	68	414	927	2844	4253	78	543	1305	1926
2010	44	478	4503	12617	17642	45	531	5632	6208	61	408	918	2880	4267	73	519	1273	1865
2011	41	419	4575	13726	18761	42	472	5607	6121	54	361	899	2857	4171	61	459	1293	1813
2012	29	347	4457	13619	18452	31	384	5373	5788	57	290	912	2793	4052	63	377	1245	1685
2013 ¹	41	394	4379	9242	14056	43	459	5376	5878	48	272	658	1641	2619	54	331	915	1300

¹ From 2013 onwards, regional boundaries have been adjusted to the new ABS Greater Adelaide Statistical Division – For more information please look at *Preface* and *Definitions & Explanatory Notes*

ROAD CRASHES in 2013

Time Distribution

Crash Types

Crash Location

Top Intersections

Motor Vehicle Types

Involvement & Responsibility

Speed

Table 8: Crashes and Casualties during Holiday Periods by Severity

Period	Crashes					Casualties			
	Fatal Crashes	Serious Injury Crashes	Minor Injury Crashes	Property Damage Crashes	ALL CRASHES	Fatalities	Serious Injuries	Minor Injuries	ALL CASUALTIES
New Year (1 January) (1 day)	0	2	14	19	35	0	2	17	19
Australia Day Weekend (26 January – 28 January) (3 days)	1	7	28	58	94	1	7	36	44
Adelaide Cup (9 March – 11 March) (3 days)	2	4	31	53	90	3	4	38	45
Easter (29 March – 1 April) (4 days)	4	8	35	82	129	5	10	58	73
Anzac Day (25 April) (1 day)	1	1	2	9	13	1	1	2	4
Queens Birthday (8 June – 10 June) (3 days)	1	1	27	58	87	1	1	32	34
Labour Day (5 October – 7 October) (3 days)	1	5	26	56	88	1	5	34	40
Christmas/New Year Period (23 December – 3 January ¹) (6 days)	2	17	109	226	354	2	23	139	164
SCHOOL HOLIDAYS									
January (1 January – 28 January) (28 days)	8	47	321	686	1062	10	51	410	471
April (13 April – 28 April) (16 days)	2	34	176	445	657	2	41	210	253
July (6 July – 21 July) (16 days)	5	27	195	460	687	5	35	254	294
September (28 September – 13 October) (16 days)	5	30	179	404	618	5	35	242	282
December (14 December – 31 December) (18 days)	2	31	195	433	661	2	38	248	288

¹ 2014 data is preliminary and correct at the time of publishing

Table 9a: Casualty Crashes by Time of Day, Day of Week

Time Period	Day of Week							TOTAL
	Monday	Tuesday	Wednesday	Thursday	Friday	Saturday	Sunday	
00:00 – 01:59	13	7	10	17	10	24	34	115
02:00 – 03:59	5	3	3	6	10	22	21	70
04:00 – 05:59	9	5	6	5	7	9	17	58
06:00 – 07:59	73	85	64	77	60	18	18	395
08:00 – 09:59	126	166	146	162	129	64	53	846
10:00 – 11:59	96	80	104	99	84	114	74	651
12:00 – 13:59	88	87	103	104	101	117	85	685
14:00 – 15:59	136	157	133	137	135	104	81	883
16:00 – 17:59	156	181	208	164	176	79	95	1059
18:00 – 19:59	70	88	84	107	103	60	42	554
20:00 – 21:59	33	30	40	50	47	48	39	287
22:00 – 23:59	15	14	21	26	45	42	26	189
TOTAL	820	903	922	954	907	701	585	5792

Figure 3: Casualty Crashes by Time of Day, Day of Week

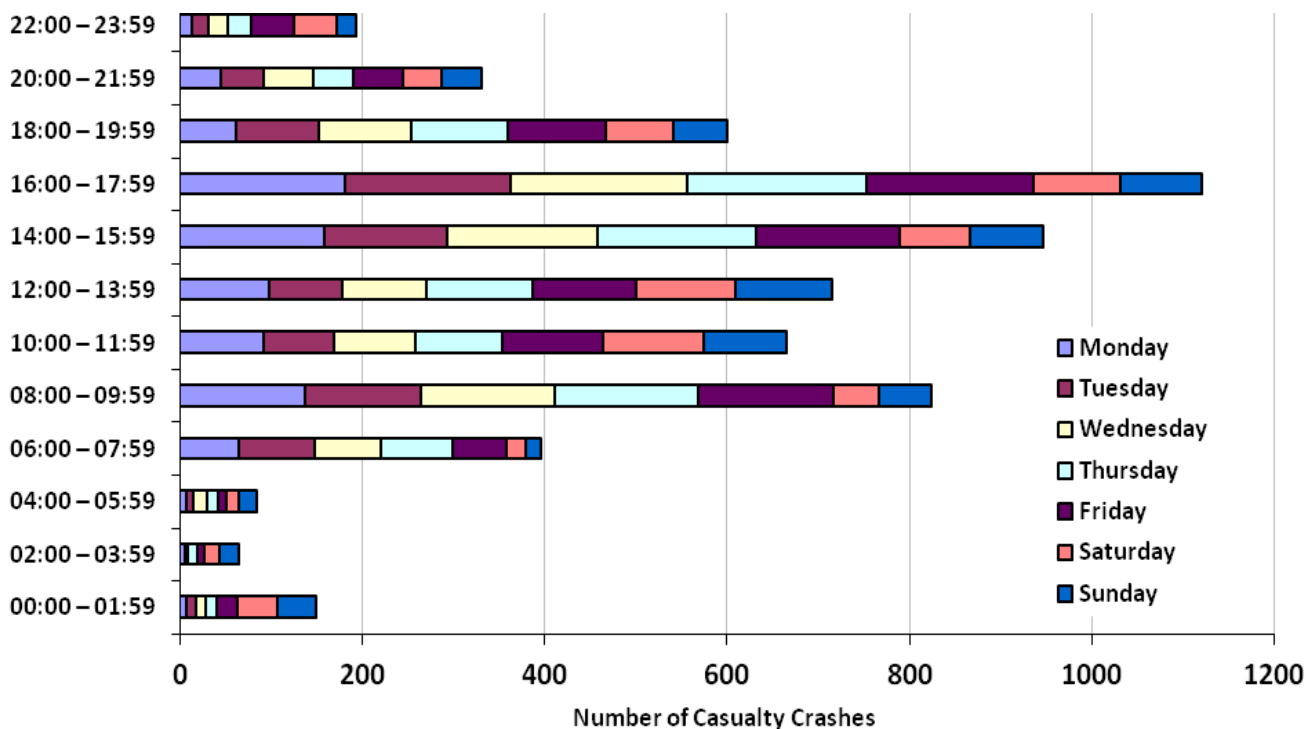


Table 9b: Casualties by Time of Day, Day of Week

Time Period	Day of Week							TOTAL
	Monday	Tuesday	Wednesday	Thursday	Friday	Saturday	Sunday	
00:00 – 01:59	15	9	12	20	17	31	42	146
02:00 – 03:59	7	3	3	8	12	32	28	93
04:00 – 05:59	9	5	7	5	7	10	27	70
06:00 – 07:59	92	102	80	91	72	22	20	479
08:00 – 09:59	149	214	169	190	155	75	61	1013
10:00 – 11:59	111	92	127	119	99	140	97	785
12:00 – 13:59	111	108	134	121	124	153	119	870
14:00 – 15:59	164	191	160	178	161	132	99	1085
16:00 – 17:59	190	217	250	209	216	111	130	1323
18:00 – 19:59	83	98	102	130	140	80	57	690
20:00 – 21:59	43	39	54	71	64	56	47	374
22:00 – 23:59	20	19	32	31	65	51	31	249
TOTAL	994	1097	1130	1173	1132	893	758	7177

Table 9c: All Crashes by Time of Day, Day of Week

Time Period	Day of Week							TOTAL
	Monday	Tuesday	Wednesday	Thursday	Friday	Saturday	Sunday	
00:00 – 01:59	39	34	25	52	39	76	95	360
02:00 – 03:59	22	10	15	27	29	58	69	230
04:00 – 05:59	29	29	30	31	30	44	55	248
06:00 – 07:59	196	201	213	200	171	62	56	1099
08:00 – 09:59	351	445	423	399	332	170	143	2263
10:00 – 11:59	267	247	286	271	245	299	191	1806
12:00 – 13:59	236	263	275	280	293	344	260	1951
14:00 – 15:59	375	402	379	422	450	271	203	2502
16:00 – 17:59	408	481	571	603	510	288	233	3094
18:00 – 19:59	202	247	245	285	317	186	143	1625
20:00 – 21:59	98	104	129	143	150	152	114	890
22:00 – 23:59	53	64	76	80	134	129	71	607
TOTAL	2276	2527	2667	2793	2700	2079	1633	16675

Table 10: Crashes and Casualties by Month of Year and Severity

Month	Crashes				ALL CRASHES	Casualties			
	Fatal Crashes	Serious Injury Crashes	Minor Injury Crashes	Property Damage Crashes		Fatalities	Serious Injuries	Minor Injuries	ALL CASUALTIES
January	8	54	367	798	1227	10	59	463	532
February	4	46	441	879	1370	4	51	541	596
March	15	63	465	966	1509	17	73	591	681
April	4	58	372	907	1341	4	70	456	530
May	5	61	499	1017	1582	5	76	593	674
June	11	47	428	966	1452	13	55	527	595
July	11	54	399	922	1386	11	65	505	581
August	7	43	464	957	1471	9	54	561	624
September	3	57	396	819	1275	3	65	492	560
October	6	59	436	903	1404	6	65	552	623
November	8	68	407	917	1400	8	89	534	631
December	7	56	363	832	1258	7	68	475	550
TOTAL	89	666	5037	10883	16675	97	790	6290	7177

**Table 11a: Crashes and Casualties by Crash Type and Severity
Metropolitan Adelaide**

Crash Type	Crashes				Casualties				
	Fatal Crashes	Serious Injury Crashes	Minor Injury Crashes	Property Damage Crashes	ALL CRASHES	Fatalities	Serious Injuries	Minor Injuries	ALL CASUALTIES
MULTI VEHICLE									
Head On	1	23	69	99	192	1	39	123	163
Rear End	3	52	1728	3111	4894	3	58	2176	2237
Side Swipe	5	20	314	1011	1350	5	26	346	377
Right Angle	4	61	822	1865	2752	4	78	1005	1088
Right Turn	2	37	457	841	1337	2	39	600	641
Hit Parked Vehicle	0	7	141	720	868	0	8	158	166
Sub-total	15	200	3531	7647	11393	15	248	4408	4672
SINGLE VEHICLE									
Hit Fixed Object	13	97	432	1306	1848	12	111	523	648
Hit Pedestrian	11	65	191	6	273	9	67	208	286
Hit Animal	0	0	15	60	75	0	0	16	16
Hit Object on Road	0	0	10	35	45	0	0	12	12
Roll Over	2	29	168	118	317	1	30	175	207
Left Road Out of Control	0	2	13	33	48	0	2	13	15
Other	0	1	19	37	57	0	1	20	21
Sub-total	26	194	848	1595	2663	22	211	967	1205
TOTAL	41	394	4379	9242	14056	37	459	5375	5877

**Table 11b: Crashes and Casualties by Crash Type and Severity
Rural**

Crash Type	Crashes				Casualties				
	Fatal Crashes	Serious Injury Crashes	Minor Injury Crashes	Property Damage Crashes	ALL CRASHES	Fatalities	Serious Injuries	Minor Injuries	ALL CASUALTIES
MULTI VEHICLE									
Head On	9	12	22	34	77	10	28	38	76
Rear End	2	9	59	169	239	2	10	82	94
Side Swipe	0	13	27	116	156	0	14	42	56
Right Angle	6	31	101	310	448	7	42	159	208
Right Turn	1	10	21	61	93	2	14	32	48
Hit Parked Vehicle	0	3	15	99	117	0	3	16	19
Sub-total	18	78	245	789	1130	21	111	369	501
SINGLE VEHICLE									
Hit Fixed Object	20	80	210	439	749	21	86	275	382
Hit Pedestrian	2	12	15	1	30	2	16	16	34
Hit Animal	0	7	24	153	184	0	9	25	34
Hit Object on Road	0	2	2	13	17	0	2	2	4
Roll Over	6	79	142	188	415	8	90	203	301
Left Road Out of Control	1	12	17	51	81	1	15	22	38
Other	1	2	3	7	13	1	2	3	6
Sub-total	30	194	413	852	1489	33	220	546	799
TOTAL	48	272	658	1641	2619	54	331	915	1300

**Table 11c: Crashes and Casualties by Crash Type and Severity
South Australia**

Crash Type	Crashes				Casualties				
	Fatal Crashes	Serious Injury Crashes	Minor Injury Crashes	Property Damage Crashes	ALL CRASHES	Fatalities	Serious Injuries	Minor Injuries	ALL CASUALTIES
MULTI VEHICLE									
Head On	10	35	91	133	269	11	67	161	239
Rear End	5	61	1787	3280	5133	5	68	2258	2331
Side Swipe	5	33	341	1127	1506	5	40	388	433
Right Angle	10	92	923	2175	3200	12	120	1164	1296
Right Turn	3	47	478	902	1430	4	53	632	689
Hit Parked Vehicle	0	10	156	819	985	0	11	174	185
Sub-total	33	278	3776	8436	12523	37	359	4777	5173
SINGLE VEHICLE									
Hit Fixed Object	33	177	642	1745	2597	35	197	798	1030
Hit Pedestrian	13	77	206	7	303	13	83	224	320
Hit Animal	0	7	39	213	259	0	9	41	50
Hit Object on Road	0	2	12	48	62	0	2	14	16
Roll Over	8	108	310	306	732	10	120	378	508
Left Road Out of Control	1	14	30	84	129	1	17	35	53
Other	1	3	22	44	70	1	3	23	27
Sub-total	56	388	1261	2447	4152	60	431	1513	2004
TOTAL	89	666	5037	10883	16675	97	790	6290	7177

Table 12: Hit Object Crashes by Object First Hit and Severity

Type of Fixed Object	Fatal Crashes	Serious Injury Crashes	Minor Injury Crashes	Property Damage Crashes	ALL CRASHES
Tree		15	79	236	799
Traffic Signal Pole		0	2	7	61
Pole - not Stobie		1	7	27	171
Bridge		0	1	2	11
Sign Post		0	5	20	81
Stobie Pole		7	17	81	293
Other Fixed Obstruction		9	49	220	998
Guard Rail		1	17	47	168
Wire Rope Barrier		0	0	2	15
TOTAL		33	177	642	2597

Table 13: Single Vehicle Crashes by Motor Vehicle Type & Severity

Type of Fixed Object	Fatal Crashes	Serious Injury Crashes	Minor Injury Crashes ¹	Property Damage Crashes	ALL CRASHES
Passenger Vehicle	45	272	963	2155	3435
Light Truck (>4.5 Tonnes)	0	0	1	12	13
Heavy Vehicle	3	12	24	132	171
Buses	0	2	10	12	24
Motorcycles	7	82	174	102	365
Bicycles	1	17	81	22	121
Other	0	2	8	10	20
TOTAL	56	387	1261	2445	4149

¹ 2013 total excludes three crashes that included gopher riders

Figure 4: DCA

Pedestrian on foot in toy/pram	100 NEAR SIDE	101 EMERGING	102 FAR SIDE	103 Playing, working, lifting, standing on carriageway	104 WALKING WITH TRAFFIC	105 FACING TRAFFIC	106 ON FOOTPATH/ MEDIAN	107 DRIVEWAY	108 STUCK IN/ABLE TO LOAD/UNLOAD ALIGHTING VEHICLE	109 BOMBING & STRUCK BY SAME TRUCK / INCLUDES WORKERS/ PUSHING VEHICLE	110 CROSS TRAFFIC	111 RIGHT/FAR	112 LEFT/NEAR	113 RIGHT/NEAR	114 TWO RIGHT TURNING	115 RIGHT/LEFT/FAR	116 LEFT/NEAR	117 RIGHT/LEFT/NEAR	118 TWO LEFT TURN	119 OTHER ADJACENT	120 HEAD ON (NOT OVERLAPPING)	121 RIGHT THRU	122 LEFT THRU	123 RIGHT/LEFT	124 RIGHT/RIGHT	125 LEFT/LEFT	126	127	128	129 OTHER CROSSING	130 REAR END	131 LEFT REAR	132 RIGHT END	133 LANE SIDE SWIPE	134 LANE CHANGE RIGHT (NOT OVERLAPPING)	135 LANE CHANGE LEFT	136 RIGHT TURN SIDE SWIPE	137 LEFT TURN SIDE SWIPE	138	139 OTHER SAME DIRECTION	140 U TURN	141 U TURN INTO FIXED OBJECT / PARKED VEHICLE	142 LEAVING PARKING	143 ENTERING PARKING	144 PARKING VEHICLES ONLY	145 REVERSING	146 REACTING INTO FIXED OBJECT / PARKED VEHICLE / INCLUDES PASSENGERS	147 BREAKING/FROM DRIVEWAY/LANE	148 FROM FOOTWAY	149 OTHER MANOEUVRING	150 HEAD ON (INCL SIDE SWIPE)	151 OUT OF CONTROL	152 PULLING OUT	153 CUTTING IN	154 PULLING OUT - DEAD END	155 TEMPORARY ROADWORKS	156 STRUCK/OBJECT ON CARRIAGEWAY	157 ANIMAL (NOT RIDDIN)	159 OTHER OVERTAKING	160 PARKED	161 DOUBLE PARKED	162 ACCIDENT OR BROKEN DOWN	163 VEHICLE DOOR	164 PERMANENT OBSTRUCTION ON CARRIAGEWAY	165 TEMPORARY ROADWORKS	166 STRUCK/OBJECT ON CARRIAGEWAY	167 ANIMAL (NOT RIDDIN)	169 HIT PARKED CAR OPPOSITE SIDE OF ROAD / OTHER ON PATH	170 OFF CARRIAGEWAY COLLECT	171 LEFT OFF CARRIAGEWAY INTO OBJECT/PARKED VEHICLE	172 OFF CARRIAGEWAY TO RIGHT	173 RIGHT OFF CARRIAGEWAY INTO OBJECT/PARKED VEHICLE	174 OUT OF CONTROL ON CARRIAGEWAY	175 OFF END OF ROAD/T INTERSECTION	177 OFF CARRIAGEWAY RIGHT BEND	178 OFF RIGHT BEND INTO OBJECT/PARKED VEHICLE	179 OTHER STRAIGHT	180 OFF CARRIAGEWAY RIGHT BEND	181 OFF RIGHT BEND INTO OBJECT/PARKED VEHICLE	182 OFF CARRIAGEWAY LEFT BEND	183 OFF LEFT BEND INTO OBJECT/PARKED VEHICLE	184 OUT OF CONTROL ON CARRIAGEWAY	188 OTHER CURVE	189 OTHER STRAIGHT	190 FELL IN/FROM VEHICLE	191 LOAD OR MISILE STRUCK VEHICLE	192 STRUCK TRAIN	193 STRUCK RAILWAY CROSSING FURNITURE	194 PAINTED LINE/FUR AWAY	199 UNKNOWN
--------------------------------	------------------	-----------------	-----------------	---	-----------------------------	-----------------------	----------------------------	-----------------	---	---	----------------------	------------------	------------------	-------------------	--------------------------	-----------------------	------------------	------------------------	----------------------	-----------------------	----------------------------------	-------------------	------------------	-------------------	--------------------	------------------	-----	-----	-----	-----------------------	-----------------	------------------	------------------	------------------------	--	-------------------------	------------------------------	-----------------------------	-----	-----------------------------	---------------	--	------------------------	-------------------------	------------------------------	------------------	--	------------------------------------	---------------------	--------------------------	----------------------------------	-----------------------	--------------------	-------------------	-------------------------------	----------------------------	-------------------------------------	----------------------------	-------------------------	---------------	----------------------	--------------------------------	---------------------	---	----------------------------	-------------------------------------	----------------------------	---	--------------------------------	--	---------------------------------	---	--------------------------------------	---------------------------------------	-----------------------------------	--	-----------------------	-----------------------------------	--	----------------------------------	---	--------------------------------------	--------------------	-----------------------	-----------------------------	--------------------------------------	---------------------	--	------------------------------	----------------

Table 14a: Crashes and Casualties by DCA: Metropolitan Adelaide

Location Type	Crashes					Casualties			
	Fatal Crashes	Serious Injury Crashes	Minor Injury Crashes	Property Damage Crashes	ALL CRASHES	Fatalities	Serious Injuries	Minor Injuries	ALL CASUALTIES
PEDESTRIANS									
100	4	26	70	1	101	4	26	74	104
101	1	7	6	0	14	1	7	6	14
102	0	19	58	2	79	0	19	59	78
103	3	4	12	0	19	3	4	12	19
104	0	0	1	0	1	0	0	1	1
105	0	1	2	0	3	0	1	2	3
106	2	0	2	1	5	2	2	3	7
107	0	2	20	0	22	0	2	20	22
108	0	1	7	1	9	0	1	7	8
109	2	5	13	1	21	2	5	24	31
Sub-total	12	65	191	6	274	12	67	208	287
ADJ DIRECTIONS									
110	0	18	254	417	689	0	27	330	357
111	1	1	55	202	259	1	3	59	63
112	0	1	10	24	35	0	1	15	16
113	2	19	254	543	818	2	23	320	345
114	0	0	10	49	59	0	0	11	11
115	0	0	5	14	19	0	0	6	6
116	0	3	90	194	287	0	3	102	105
117	0	0	0	0	0	0	0	0	0
118	0	0	0	4	4	0	0	0	0
119	0	0	6	12	18	0	0	7	7
Sub-total	3	42	684	1459	2188	3	57	850	910
OPP DIRECTIONS									
120	2	22	66	92	182	2	37	120	159
121	2	36	444	807	1289	2	38	587	627
122	0	0	0	0	0	0	0	0	0
123	0	1	3	15	19	0	1	3	4
124	0	1	1	2	4	0	1	1	2
125	0	0	0	0	0	0	0	0	0
129	0	0	1	4	5	0	0	1	1
Sub-total	4	60	515	920	1499	4	77	712	793
SAME DIRECTION									
130	2	44	1345	2479	3870	2	50	1706	1758
131	0	3	143	280	426	0	3	167	170
132	1	6	228	303	538	1	6	293	300
133	1	4	43	128	176	1	9	47	57
134	0	1	33	147	181	0	1	36	37
135	0	1	57	171	229	0	1	60	61
136	0	1	17	70	88	0	1	18	19
137	1	4	57	127	189	1	4	58	63
139	1	0	5	26	32	1	0	5	6
Sub-total	6	64	1928	3731	5729	6	75	2390	2471
MANOEVERTING									
140	0	4	54	160	218	0	5	69	74
141	0	0	8	18	26	0	0	10	10
142	0	3	20	98	121	0	3	22	25
143	0	0	7	7	14	0	0	7	7
144	0	0	0	45	45	0	0	0	0
145	0	0	7	38	45	0	0	7	7

Table 14a: Crashes and Casualties by DCA: Metropolitan Adelaide

Location Type	Crashes					Casualties			
	Fatal Crashes	Serious Injury Crashes	Minor Injury Crashes	Property Damage Crashes	ALL CRASHES	Fatalities	Serious Injuries	Minor Injuries	ALL CASUALTIES
146	0	1	6	80	87	0	1	6	7
147	0	11	103	324	438	0	13	117	130
148	0	5	20	18	43	0	5	20	25
149	1	0	10	57	68	2	0	10	12
Subtotal	1	24	235	845	1105	2	27	268	297
OVERTAKING									
150	0	1	3	5	9	0	2	3	5
151	0	2	5	8	15	0	2	5	7
152	1	2	21	53	77	1	2	26	29
153	0	0	0	3	3	0	0	0	0
154	0	0	5	10	15	0	0	5	5
159	0	1	19	57	77	0	1	20	21
Sub-total	1	6	53	136	196	1	7	59	67
ON PATH									
160	0	5	106	514	625	0	6	121	127
161	0	0	0	1	1	0	0	0	0
162	0	0	2	4	6	0	0	2	2
163	0	2	22	47	71	0	2	23	25
164	0	1	3	7	11	0	1	3	4
165	0	0	3	7	10	0	0	3	3
166	0	0	8	23	31	0	0	10	10
167	0	0	14	60	74	0	0	14	14
169	0	0	9	49	58	0	0	10	10
Sub-total	0	8	167	712	887	0	9	186	195
OFF PATH, STRGT									
170	0	1	12	19	32	0	1	12	13
171	4	36	206	673	919	4	42	251	297
172	0	1	6	4	11	0	1	6	7
173	4	20	76	233	333	5	24	97	126
174	1	16	92	61	170	1	16	92	109
175	0	2	14	28	44	0	2	15	17
179	0	1	4	6	11	0	1	4	5
Sub-total	9	77	410	1024	1520	10	87	477	574
OFF PATH, CURVE									
180	1	0	13	18	32	1	0	14	15
181	2	20	75	138	235	2	24	87	113
182	0	1	8	10	19	0	2	8	10
183	2	21	50	130	203	2	21	60	83
184	0	5	32	19	56	0	5	37	42
189	0	0	1	2	3	0	0	1	1
Sub-total	5	47	179	317	548	5	52	207	264
MISCELLANEOUS									
190	0	1	12	0	13	0	1	12	13
191	0	0	3	27	30	0	0	3	3
192	0	0	0	7	7	0	0	0	0
193	0	0	0	6	6	0	0	0	0
194	0	0	0	45	45	0	0	0	0
199	0	0	2	7	9	0	0	3	3
Subtotal	0	1	17	92	110	0	1	18	19
TOTAL	41	394	4379	9242	14056	43	459	5375	5877

Table 14b: Crashes and Casualties by DCA: Rural

Location Type	Crashes					Casualties			
	Fatal Crashes	Serious Injury Crashes	Minor Injury Crashes	Property Damage Crashes	ALL CRASHES	Fatalities	Serious Injuries	Minor Injuries	ALL CASUALTIES
PEDESTRIANS									
100	1	4	4	1	10	1	4	5	10
101	0	0	0	0	0	0	0	0	0
102	0	2	2	0	4	0	2	2	4
103	1	1	2	0	4	1	1	2	4
104	0	0	0	0	0	0	0	0	0
105	0	0	0	0	0	0	0	0	0
106	0	1	0	0	1	0	2	0	2
107	0	0	3	0	3	0	0	3	3
108	0	1	0	0	1	0	2	0	2
109	0	3	4	0	7	0	5	4	9
Sub-total	2	12	15	1	30	2	16	16	34
ADJ DIRECTIONS									
110	3	18	56	148	225	4	27	82	113
111	0	0	4	27	31	0	0	4	4
112	1	0	1	4	6	1	1	1	3
113	2	5	18	39	64	2	6	38	46
114	0	0	3	4	7	0	0	3	3
115	0	0	1	4	5	0	0	1	1
116	0	0	7	14	21	0	0	16	16
117	0	0	0	0	0	0	0	0	0
118	0	0	0	1	1	0	0	0	0
119	0	0	0	5	5	0	0	0	0
Sub-total	6	23	90	246	365	7	34	145	186
OPP DIRECTIONS									
120	9	10	20	34	73	10	25	32	67
121	1	10	19	55	85	2	14	30	46
122	0	0	0	0	0	0	0	0	0
123	0	0	0	0	0	0	0	0	0
124	0	0	0	0	0	0	0	0	0
125	0	0	0	0	0	0	0	0	0
129	0	1	0	1	2	0	1	1	2
Sub-total	10	21	39	90	160	12	40	63	115
SAME DIRECTION									
130	1	5	37	92	135	1	5	54	60
131	0	0	4	17	21	0	0	4	4
132	1	4	18	47	70	1	5	24	30
133	0	2	1	11	14	0	3	1	4
134	0	1	2	7	10	0	1	4	5
135	0	0	1	4	5	0	0	1	1
136	0	0	2	8	10	0	0	2	2
137	0	0	2	6	8	0	0	2	2
139	0	1	0	2	3	0	1	0	1
Sub-total	2	13	67	194	276	2	15	92	109
MANOEVERING									
140	0	1	10	33	44	0	1	18	19
141	0	0	0	2	2	0	0	0	0
142	0	0	6	31	37	0	0	6	6
143	0	0	0	1	1	0	0	0	0
144	0	0	1	7	8	0	0	1	1
145	0	0	0	9	9	0	0	0	0

Table 14b: Crashes and Casualties by DCA: Rural

Location Type	Crashes					Casualties			
	Fatal Crashes	Serious Injury Crashes	Minor Injury Crashes	Property Damage Crashes	ALL CRASHES	Fatalities	Serious Injuries	Minor Injuries	ALL CASUALTIES
146	0	2	4	18	24	0	2	6	8
147	0	4	6	41	51	0	4	9	13
148	0	3	1	5	9	0	3	1	4
149	0	0	1	9	10	0	0	1	1
Subtotal	0	10	29	156	195	0	10	42	52
OVERTAKING									
150	0	1	2	0	3	0	2	5	7
151	0	2	4	5	11	0	2	5	7
152	0	5	5	20	30	0	5	10	15
153	0	0	0	1	1	0	0	0	0
154	0	0	0	2	2	0	0	0	0
159	0	3	4	14	21	0	3	4	7
Sub-total	0	11	15	42	68	0	12	24	36
ON PATH									
160	0	3	13	63	79	0	3	14	17
161	0	0	0	0	0	0	0	0	0
162	0	0	0	1	1	0	0	0	0
163	0	0	0	4	4	0	0	0	0
164	0	0	0	2	2	0	0	0	0
165	0	0	1	1	2	0	0	1	1
166	0	2	2	10	14	0	2	2	4
167	0	7	24	152	183	0	9	25	34
169	0	0	0	7	7	0	0	0	0
Sub-total	0	12	40	240	292	0	14	42	56
OFF PATH, STRGT									
170	2	16	30	68	116	2	18	44	64
171	6	25	98	197	326	9	30	123	162
172	1	5	16	20	42	1	5	22	28
173	3	19	48	78	148	3	19	62	84
174	0	27	39	51	117	0	29	50	79
175	1	1	3	15	20	1	1	6	8
179	1	0	0	2	3	1	0	0	1
Sub-total	14	93	234	431	772	17	102	307	426
OFF PATH, CURVE									
180	0	16	27	38	81	0	21	41	62
181	9	27	46	83	165	9	30	62	101
182	0	4	12	18	34	0	4	17	21
183	3	19	18	61	101	3	20	31	54
184	1	8	22	25	56	1	10	29	40
189	0	0	1	0	1	0	0	1	1
Sub-total	13	74	126	225	438	13	85	181	279
MISCELLANEOUS									
190	1	1	1	1	4	1	1	1	3
191	0	0	1	2	3	0	0	1	1
192	0	1	0	0	1	0	1	0	1
193	0	0	0	1	1	0	0	0	0
194	0	0	0	9	9	0	0	0	0
199	0	1	1	3	5	0	1	1	2
Subtotal	1	3	3	16	23	1	3	3	7
TOTAL	48	272	658	1641	2619	54	331	915	1300

Table 14c: Crashes and Casualties by DCA: South Australia

Location Type	Crashes					Casualties			
	Fatal Crashes	Serious Injury Crashes	Minor Injury Crashes	Property Damage Crashes	ALL CRASHES	Fatalities	Serious Injuries	Minor Injuries	ALL CASUALTIES
PEDESTRIANS									
100	5	30	74	2	111	5	30	79	114
101	1	7	6	0	14	1	7	6	14
102	0	21	60	2	83	0	21	61	82
103	4	5	14	0	23	4	5	14	23
104	0	0	1	0	1	0	0	1	1
105	0	1	2	0	3	0	1	2	3
106	2	1	2	1	6	2	4	3	9
107	0	2	23	0	25	0	2	23	25
108	0	2	7	1	10	0	3	7	10
109	2	8	17	1	28	2	10	28	40
Sub-total	14	77	206	7	304	14	83	224	321
ADJ DIRECTIONS									
110	3	36	310	565	914	4	54	412	470
111	1	1	59	229	290	1	3	63	67
112	1	1	11	28	41	1	2	16	19
113	4	24	272	582	882	4	29	358	391
114	0	0	13	53	66	0	0	14	14
115	0	0	6	18	24	0	0	7	7
116	0	3	97	208	308	0	3	118	121
117	0	0	0	0	0	0	0	0	0
118	0	0	0	5	5	0	0	0	0
119	0	0	6	17	23	0	0	7	7
Sub-total	9	65	774	1705	2553	10	91	995	1096
OPP DIRECTIONS									
120	11	32	86	126	255	12	62	152	226
121	3	46	463	862	1374	4	52	617	673
122	0	0	0	0	0	0	0	0	0
123	0	1	3	15	19	0	1	3	4
124	0	1	1	2	4	0	1	1	2
125	0	0	0	0	0	0	0	0	0
129	0	1	1	5	7	0	1	2	3
Sub-total	14	81	554	1010	1659	16	117	775	908
SAME DIRECTION									
130	3	49	1382	2571	4005	3	54	1759	1818
131	0	3	147	297	447	0	3	171	174
132	2	10	246	350	608	2	11	317	330
133	1	6	44	139	190	2	12	48	61
134	0	2	35	154	191	0	2	40	42
135	0	1	58	175	234	0	1	61	62
136	0	1	19	78	98	0	1	20	21
137	1	4	59	133	197	1	4	60	65
139	1	1	5	28	35	1	1	5	7
Sub-total	8	77	1995	3925	6005	9	89	2481	2580
MANOEVERTING									
140	0	5	64	193	262	3	54	1759	93
141	0	0	8	20	28	3	54	1759	10
142	0	3	26	129	158	3	54	1759	31
143	0	0	7	8	15	3	54	1759	7
144	0	0	1	52	53	3	54	1759	1
145	0	0	7	47	54	3	54	1759	7

Table 14c: Crashes and Casualties by DCA: South Australia

Location Type	Crashes					Casualties			
	Fatal Crashes	Serious Injury Crashes	Minor Injury Crashes	Property Damage Crashes	ALL CRASHES	Fatalities	Serious Injuries	Minor Injuries	ALL CASUALTIES
146	0	3	10	98	111	0	3	12	15
147	0	15	109	365	489	0	17	126	143
148	0	8	21	23	52	0	8	21	29
149	1	0	11	66	78	2	0	11	13
Subtotal	1	34	264	1001	1300	20	352	10724	349
OVERTAKING									
150	0	2	5	5	12	0	4	8	12
151	0	4	9	13	26	0	4	10	14
152	1	7	26	73	107	1	7	36	44
153	0	0	0	4	4	0	0	0	0
154	0	0	5	12	17	0	0	5	5
159	0	4	23	71	98	0	4	24	28
Sub-total	1	17	68	178	264	1	19	83	103
ON PATH									
160	0	8	119	577	704	0	9	135	144
161	0	0	0	1	1	0	0	0	0
162	0	0	2	5	7	0	0	2	2
163	0	2	22	51	75	0	2	23	25
164	0	1	3	9	13	0	1	3	4
165	0	0	4	8	12	0	0	4	4
166	0	2	10	33	45	0	2	12	14
167	0	7	38	212	257	0	9	39	48
169	0	0	9	56	65	0	0	10	10
Sub-total	0	20	207	952	1179	0	23	228	251
OFF PATH, STRGT									
170	2	17	42	87	148	2	19	56	77
171	10	61	304	870	1245	13	72	374	459
172	1	6	22	24	53	1	6	28	35
173	7	39	124	311	481	8	43	159	210
174	1	43	131	112	287	1	45	142	188
175	1	3	17	43	64	1	3	21	25
179	1	1	4	8	14	1	1	4	6
Sub-total	23	170	644	1455	2292	27	189	784	1000
OFF PATH, CURVE									
180	1	16	40	56	113	1	21	55	77
181	11	47	121	221	400	11	54	149	214
182	0	5	20	28	53	0	6	25	31
183	5	40	68	191	304	5	41	91	137
184	1	13	54	44	112	1	15	66	82
189	0	0	2	2	4	0	0	2	2
Sub-total	18	121	305	542	986	18	137	388	543
MISCELLANEOUS									
190	1	2	13	1	17	1	2	13	16
191	0	0	4	29	33	0	0	4	4
192	0	1	0	7	8	0	1	0	1
193	0	0	0	7	7	0	0	0	0
194	0	0	0	54	54	0	0	0	0
199	0	1	3	10	14	0	1	4	5
Subtotal	1	4	20	108	133	1	4	21	26
TOTAL	89	666	5037	10883	16675	116	1104	16703	7177

**Table 15a: Crashes and Casualties by Location Type and Severity
Metropolitan Adelaide**

Location Type	Crashes					Casualties			
	Fatal Crashes	Serious Injury Crashes	Minor Injury Crashes	Property Damage Crashes	ALL CRASHES	Fatalities	Serious Injuries	Minor Injuries	ALL CASUALTIES
INTERSECTION									
Interchange	0	1	6	18	25	0	1	7	8
Cross Road	3	74	1124	2256	3457	3	85	1379	1467
Y-Junction	0	0	4	5	9	0	0	4	4
T-Junction	8	89	1272	2530	3899	8	100	1565	1673
Multiple	2	3	58	135	198	2	5	74	81
Rail Xing	0	0	6	8	14	0	0	6	6
Sub-total	13	167	2470	4952	7602	13	191	3035	3239
MID BLOCK									
Crossover	0	0	2	4	6	0	0	2	2
Rail Crossing	0	0	9	15	24	0	0	9	9
Divided Road	10	84	859	1818	2771	10	98	1070	1178
Not Divided	14	137	938	2275	3364	16	162	1131	1309
One Way	0	0	4	9	13	0	0	4	4
Freeway	3	5	45	93	146	3	7	61	71
Ramp On	0	0	4	8	12	0	0	6	6
Ramp Off	0	0	1	2	3	0	0	1	1
Ped. Crossing	0	1	46	64	111	0	1	51	52
Other	1	0	1	2	4	1	0	5	6
Sub-total	28	227	1909	4290	6454	30	268	2340	2638
TOTAL	41	394	4379	9242	14056	43	459	5375	5877

**Table 15b: Crashes and Casualties by Location Type and Severity
Rural**

Location Type	Crashes					Casualties			
	Fatal Crashes	Serious Injury Crashes	Minor Injury Crashes	Property Damage Crashes	ALL CRASHES	Fatalities	Serious Injuries	Minor Injuries	ALL CASUALTIES
INTERSECTION									
Interchange	0	0	1	0	1	0	0	1	1
Cross Road	5	33	101	271	410	6	43	139	188
Y- Junction	0	0	0	0	0	0	0	0	0
T-Junction	5	27	98	257	387	6	35	147	188
Multiple	0	6	5	8	19	0	10	11	21
Sub-total	10	66	205	536	817	12	88	298	398
MID BLOCK									
Crossover	0	0	0	2	2	0	0	0	0
Rail Crossing	0	2	1	2	5	0	2	2	4
Divided Road	0	6	16	65	87	0	6	21	27
Not Divided	36	195	434	1025	1690	40	232	587	859
Freeway	0	3	0	6	9	0	3	1	4
Ramp On	0	0	0	1	1	0	0	0	0
Ped. Crossing	0	0	2	4	6	0	0	2	2
Other	2	0	0	0	2	2	0	4	6
Sub-total	38	206	453	1105	1802	42	243	617	902
TOTAL	48	272	658	1641	2619	54	331	915	1300

**Table 15c: Crashes and Casualties by Location Type and Severity
South Australia**

Location Type	Crashes					Casualties			
	Fatal Crashes	Serious Injury Crashes	Minor Injury Crashes	Property Damage Crashes	ALL CRASHES	Fatalities	Serious Injuries	Minor Injuries	ALL CASUALTIES
INTERSECTION									
Interchange	0	1	7	18	26	0	1	8	9
Cross Road	8	107	1225	2527	3867	9	128	1518	1655
Y- Junction	0	0	4	5	9	0	0	4	4
T-Junction	13	116	1370	2787	4286	14	135	1712	1861
Multiple	2	9	63	143	217	2	15	85	102
Rail Crossing	0	0	6	8	14	0	0	6	6
Sub-total	23	233	2675	5488	8419	25	279	3333	3637
MID BLOCK									
Crossover	0	0	2	6	8	0	0	2	2
Rail Crossing	0	2	10	17	29	0	2	11	13
Divided Road	10	90	875	1883	2858	10	104	1091	1205
Not Divided	50	332	1372	3300	5054	56	394	1718	2168
One Way	0	0	4	9	13	0	0	4	4
Freeway	3	8	45	99	155	3	10	62	75
Ramp On	0	0	4	8	12	0	0	6	6
Ramp Off	0	0	1	3	4	0	0	1	1
Ped. Crossing	0	1	48	68	117	0	1	53	54
Other	3	0	1	2	6	3	0	9	12
Sub-total	66	433	2362	5395	8256	72	511	2957	3540
TOTAL	89	666	5037	10883	16675	97	790	6290	7177

**Table 16a: Crashes and Casualties by Traffic Control and Severity
Metropolitan Adelaide**

Traffic Control	Crashes					Casualties			
	Fatal Crashes	Serious Injury Crashes	Minor Injury Crashes	Property Damage Crashes	ALL CRASHES	Fatalities	Serious Injuries	Minor Injuries	ALL CASUALTIES
INTERSECTION									
Traffic Signals	4	52	1052	2094	3202	4	57	1308	1369
Give Way Sign	1	27	285	557	870	1	31	358	390
Stop Sign	1	19	187	374	581	1	25	223	249
Roundabout	0	11	173	389	573	0	11	197	208
No Control	7	58	773	1536	2374	7	67	949	1023
Rail Xing-Boom	0	0	0	1	1	0	0	0	0
Rail Xig-No Control	0	0	0	1	1	0	0	0	0
Sub-total	13	167	2470	4952	7602	13	191	3035	3239
MID BLOCK									
Traffic Signals	0	1	52	84	137	0	1	56	57
Give Way Sign	0	0	1	0	1	0	0	1	1
Stop Sign	0	0	0	4	4	0	0	0	0
Roundabout	0	0	0	2	2	0	0	0	0
No Control	28	224	1848	4184	6284	30	265	2275	2570
Rail Xing-Boom	0	1	6	10	17	0	1	6	7
Rail Xing-Flashing	0	0	0	3	3	0	0	0	0
Rail Xing-Traffic Signals	0	0	2	2	4	0	0	2	2
Rail Xing-No Control	0	1	0	1	2	0	1	0	1
Sub-total	28	227	1909	4290	6454	30	268	2340	2638
TOTAL	41	394	4379	9242	14056	43	459	5375	5877

**Table 16b: Crashes and Casualties by Traffic Control and Severity
Rural**

Traffic Control	Crashes					Casualties			
	Fatal Crashes	Serious Injury Crashes	Minor Injury Crashes	Property Damage Crashes	ALL CRASHES	Fatalities	Serious Injuries	Minor Injuries	ALL CASUALTIES
INTERSECTION									
Traffic Signals	0	6	15	45	66	0	6	23	29
Give Way Sign	5	25	77	200	307	6	37	120	163
Stop Sign	0	7	21	38	66	0	8	29	37
Roundabout	0	3	17	56	76	0	3	17	20
No Control	5	25	75	196	301	6	34	109	149
Rail Xing-No Control	0	0	0	1	1	0	0	0	0
Sub-total	10	66	205	536	817	12	88	298	398
MID BLOCK									
Traffic Signals	0	3	2	6	11	0	3	2	5
Give Way Sign	0	0	1	1	2	0	0	2	2
Stop Sign	0	1	0	0	1	0	1	0	1
No Control	38	201	450	1094	1783	42	238	613	893
Rail Xing-Flashing	0	1	0	2	3	0	1	0	1
Rail Xing-No Control	0	0	0	1	1	0	0	0	0
Other	0	0	0	1	1	0	0	0	0
Sub-total	38	206	453	1105	1802	42	243	617	902
TOTAL	48	272	658	1641	2619	54	331	915	1300

**Table 16c: Crashes and Casualties by Traffic Control and Severity
South Australia**

Traffic Control	Crashes					Casualties			
	Fatal Crashes	Serious Injury Crashes	Minor Injury Crashes	Property Damage Crashes	ALL CRASHES	Fatalities	Serious Injuries	Minor Injuries	ALL CASUALTIES
INTERSECTION									
Traffic Signals	4	58	1067	2139	3268	4	63	1331	1398
Give Way Sign	6	52	362	757	1177	7	68	478	553
Stop Sign	1	26	208	412	647	1	33	252	286
Roundabout	0	14	190	445	649	0	14	214	228
No Control	12	83	848	1732	2675	13	101	1058	1172
Rail Xing-Boom	0	0	0	1	1	0	0	0	0
Rail Xing-No Control	0	0	0	2	2	0	0	0	0
Sub-total	23	233	2675	5488	8419	25	279	3333	3637
MID BLOCK									
Traffic Signals	0	4	54	90	148	0	4	58	62
Give Way Sign	0	0	2	1	3	0	0	3	3
Stop Sign	0	1	0	4	5	0	1	0	1
Roundabout	0	0	0	2	2	0	0	0	0
No Control	66	425	2298	5278	8067	72	503	2888	3463
Rail Xing-Boom	0	1	6	10	17	0	1	6	7
Rail Xing-Flashing	0	1	0	5	6	0	1	0	1
Rail Xing-Traffic Signals	0	0	2	2	4	0	0	2	2
Rail Xing-No Control	0	1	0	2	3	0	1	0	1
Other	0	0	0	1	1	0	0	0	0
Sub-total	66	433	2362	5395	8256	72	511	2957	3540
TOTAL	89	666	5037	10883	16675	97	790	6290	7177

Table 17: Crashes and Casualties by Area Speed Limit, Region & Severity

Area Speed Limit	Crashes					Casualties			
	Fatal Crashes	Serious Injury Crashes	Minor Injury Crashes	Property Damage Crashes	ALL CRASHES	Fatalities	Serious Injuries	Minor Injuries	ALL CASUALTIES
METROPOLITAN									
<50km/h	0	4	71	169	244	0	4	79	83
50km/h	13	101	991	2595	3700	14	110	1160	1284
60km/h	17	179	2568	5012	7776	18	208	3133	3359
70km/h	0	16	195	366	577	0	17	247	264
80km/h	5	63	388	795	1251	5	76	503	584
90km/h	2	6	48	119	175	2	8	70	80
100km/h	2	18	86	129	235	2	25	123	150
110km/h	2	7	32	57	98	2	11	60	73
Sub-total	41	394	4379	9242	14056	43	459	5375	5877
RURAL									
<50km/h	2	2	6	14	24	2	2	6	10
50km/h	6	42	139	510	697	6	46	181	233
60km/h	1	25	76	236	338	1	30	94	125
70km/h	0	0	1	1	2	0	0	1	1
80km/h	4	27	59	120	210	5	32	77	114
90km/h	1	5	6	6	18	1	6	11	18
100km/h	22	97	212	398	729	24	120	319	463
110km/h	12	74	159	356	601	15	95	226	336
Sub-total	48	272	658	1641	2619	54	331	915	1300
TOTAL	89	666	5037	10883	16675	97	790	6290	7177

Table 18: Crashes and Casualties by Light Condition, Region & Severity

Light Conditions ¹ & Region	Crashes					Casualties			
	Fatal Crashes	Serious Injury Crashes	Minor Injury Crashes	Property Damage Crashes	ALL CRASHES	Fatalities	Serious Injuries	Minor Injuries	ALL CASUALTIES
METROPOLITAN									
Daylight	34	277	3592	7172	11075	35	323	4377	4735
Night	7	117	787	2070	2981	8	136	998	1142
Sub-total	41	394	4379	9242	14056	43	459	5375	5877
RURAL									
Daylight	34	202	510	1150	1896	39	245	705	989
Night	14	70	148	491	723	15	86	210	311
Sub-total	48	272	658	1641	2619	54	331	915	1300
TOTAL	89	666	5037	10883	16675	97	790	6290	7177

¹ Determined according to the schedule of sunrise and sunset times as published in the South Australian Government Gazette

Table 19: Crashes and Casualties by Vertical Alignment, Region & Severity

Vertical Alignment & Region	Crashes					Casualties			
	Fatal Crashes	Serious Injury Crashes	Minor Injury Crashes	Property Damage Crashes	ALL CRASHES	Fatalities	Serious Injuries	Minor Injuries	ALL CASUALTIES
METROPOLITAN									
Level	26	307	3776	8214	12323	28	356	4617	5001
Crest of Hill	0	7	56	98	161	0	8	68	76
Bottom of Hill	0	8	47	84	139	0	11	65	76
Slope	15	72	490	827	1404	15	84	615	714
Unknown	0	0	10	19	29	0	0	10	10
Sub-total	41	394	4379	9242	14056	43	459	5375	5877
RURAL									
Level	35	212	488	1316	2051	39	258	687	984
Crest of Hill	2	14	38	64	118	2	19	54	75
Bottom of Hill	2	9	19	39	69	2	11	24	37
Slope	9	32	105	210	356	11	38	138	187
Unknown	0	5	8	12	25	0	5	12	17
Sub-total	48	272	658	1641	2619	54	331	915	1300
TOTAL	89	666	5037	10883	16675	97	790	6290	7177

Table 20: Crashes and Casualties by Horizontal Alignment, Region & Severity

	Crashes					Casualties			
	Fatal Crashes	Serious Injury Crashes	Minor Injury Crashes	Property Damage Crashes	ALL CRASHES	Fatalities	Serious Injuries	Minor Injuries	ALL CASUALTIES
METROPOLITAN									
Straight	30	320	3996	8498	12844	31	372	4884	5287
Curved, View Obscured	4	27	112	234	377	5	31	143	179
Curved, View Open	6	47	267	499	819	6	56	340	402
Unknown	1	0	4	11	16	1	0	8	9
Sub-total	41	394	4379	9242	14056	43	459	5375	5877
RURAL									
Straight	27	182	492	1284	1985	33	215	674	922
Curved, View Obscured	8	27	69	115	219	8	34	99	141
Curved, View Open	12	62	93	232	399	12	81	137	230
Unknown	1	1	4	10	16	1	1	5	7
Sub-total	48	272	658	1641	2619	54	331	915	1300
TOTAL	89	666	5037	10883	16675	97	790	6290	7177

Table 21: Crashes and Casualties by Road Moisture, Region & Severity

Road Moisture & Region	Crashes					Casualties			
	Fatal Crashes	Serious Injury Crashes	Minor Injury Crashes	Property Damage Crashes	ALL CRASHES	Fatalities	Serious Injuries	Minor Injuries	ALL CASUALTIES
METROPOLITAN									
Dry	37	349	3800	7850	12036	39	406	4662	5107
Wet	4	45	579	1387	2015	4	53	713	770
Unknown	0	0	0	5	5	0	0	0	0
Sub-total	41	394	4379	9242	14056	43	459	5375	5877
RURAL									
Dry	43	229	558	1373	2203	49	279	787	1115
Wet	5	42	99	267	413	5	51	127	183
Unknown	0	1	1	1	3	0	1	1	2
Sub-total	48	272	658	1641	2619	54	331	915	1300
TOTAL	89	666	5037	10883	16675	97	790	6290	7177

Table 22: Crashes and Casualties by Route and Severity

Route	Crashes					Casualties			
	Fatal Crashes	Serious Injury Crashes	Minor Injury Crashes	Property Damage Crashes	ALL CRASHES	Fatalities	Serious Injuries	Minor Injuries	ALL CASUALTIES
Anzac Highway	0	6	61	108	175	0	6	72	78
Barrier Highway	1	2	2	8	13	1	3	2	6
Cudlee Creek - Lobethal Rd	0	2	2	4	8	0	2	2	4
Dukes Highway	2	6	11	15	34	3	9	22	34
Eyre Highway	2	7	15	30	54	4	9	21	34
Gorge Rd	0	8	32	44	84	0	8	42	50
Lincoln Highway	0	3	15	26	44	0	3	16	19
Lyndoch - Chain of Ponds Rd	0	1	6	3	10	0	1	7	8
Lwr North East Road	0	0	4	4	8	0	0	4	4
Horrocks Hwy	2	2	13	20	37	2	2	15	19
Main North Road (M)	1	14	243	483	741	1	16	312	329
North East Road	0	3	97	214	314	0	3	121	124
Main South Road	0	5	22	20	47	0	7	35	42
Prt Wakefield Rd/Augusta Hwy	3	11	20	62	96	3	17	37	57
Princess Highway	0	9	10	54	73	0	9	12	21
Riddoch Highway	1	6	12	25	44	1	9	18	28
SE Freeway	3	7	33	75	118	3	8	41	52
Southern Expressway	0	0	5	19	24	0	0	5	5
Stuart Highway	0	2	9	28	39	0	2	17	19
Sturt Highway	3	8	20	48	79	4	14	38	56
Tea Tree Gully - Mannum Rd	1	9	16	39	65	1	13	22	36
Victor Harbor Road	0	3	13	25	41	0	8	20	28

**Table 23a: Crashes and Casualties by Local Government Area & Severity
Metropolitan Adelaide: Local Government Roads**

Local Government Area	Crashes					Casualties			
	Fatal Crashes	Serious Injury Crashes	Minor Injury Crashes	Property Damage Crashes	ALL CRASHES	Fatalities	Serious Injuries	Minor Injuries	ALL CASUALTIES
Adelaide Hills Council	2	4	24	74	104	2	4	34	40
Alexandrina Council ¹	0	1	1	0	2	0	1	1	2
Barossa Council ¹	0	0	2	4	6	0	0	2	2
CC Campbelltown	1	0	24	61	86	1	0	27	28
CC Marion	2	6	54	133	195	2	6	70	78
CC Mitcham	0	3	50	118	171	0	3	51	54
CC Norwd, Pynhm & St Ptrs	0	1	40	69	110	0	1	43	44
City of Adelaide	1	20	246	579	846	1	20	278	299
City of Burnside	0	3	21	78	102	0	3	24	27
City of Charles Sturt	2	4	56	198	260	3	4	65	72
City of Holdfast Bay	0	6	38	105	149	0	6	43	49
City of Onkaparinga	3	15	161	336	515	4	16	202	222
City of Playford	2	12	105	240	359	2	14	125	141
City of Port Adelaide Enfield	2	10	82	203	297	2	10	91	103
City of Prospect	0	0	14	33	47	0	0	16	16
City of Salisbury	0	13	101	268	382	0	14	130	144
City of Tea Tree Gully	0	11	42	107	160	0	16	54	70
City of Unley	0	2	31	100	133	0	2	33	35
City of West Torrens	1	4	44	130	179	1	4	49	54
CT Gawler	0	3	15	46	64	0	3	17	20
DC Mallala ¹	0	0	5	5	10	0	0	5	5
DC Mt Barker	0	2	30	61	93	0	2	39	41
Light RC ¹	0	1	10	10	21	0	1	11	12
Walkerville Town Council	0	0	4	11	15	0	0	4	4
Total	16	121	1200	2969	4306	18	130	1414	1562

¹ Alexandrina Council, Barossa Council, DC Mallala and Light RC are situated in both rural South Australia and metropolitan Adelaide

**Table 23b: Crashes and Casualties by Local Government Area & Severity
Metropolitan Adelaide: DPTI Roads**

Local Government Area	Crashes					Casualties			
	Fatal Crashes	Serious Injury Crashes	Minor Injury Crashes	Property Damage Crashes	ALL CRASHES	Fatalities	Serious Injuries	Minor Injuries	ALL CASUALTIES
Adelaide Hills Council	3	39	116	246	404	3	50	152	205
Alexandrina Council ¹	0	0	0	0	0	0	0	0	0
Barossa Council ¹	0	1	0	2	3	0	2	0	2
CC Campbelltown	1	5	86	135	227	1	6	104	111
CC Marion	0	9	227	432	668	0	9	275	284
CC Mitcham	6	18	229	385	638	6	18	263	287
CC Norwd, Pynhm & St Ptrs	1	17	196	397	611	1	17	235	253
City of Adelaide	0	3	38	88	129	0	3	45	48
City of Burnside	1	7	90	188	286	1	8	99	108
City of Charles Sturt	0	17	358	635	1010	0	21	446	467
City of Holdfast Bay	0	6	85	169	260	0	6	97	103
City of Onkaparinga	1	37	258	483	779	1	45	337	383
City of Playford	0	18	154	294	466	0	22	201	223
City of Port Adelaide Enfield	3	29	333	745	1110	3	44	417	464
City of Prospect	1	9	88	193	291	1	12	111	124
City of Salisbury	3	22	322	660	1007	3	23	436	462
City of Tea Tree Gully	1	7	115	217	340	1	7	154	162
City of Unley	2	8	122	217	349	2	12	138	152
City of West Torrens	0	11	206	456	673	0	12	245	257
CT Gawler	0	2	35	70	107	0	2	51	53
DC Mallala ¹	0	2	9	4	15	0	2	17	19
DC Mt Barker	1	3	47	125	176	1	3	54	58
Light RC ¹	0	1	14	21	36	0	3	24	27
Walkerville Town Council	1	2	51	111	165	1	2	60	63
Total	25	273	3179	6273	9750	25	329	3961	4315

¹ Alexandrina Council, Barossa Council, DC Mallala and Light RC are situated in both rural South Australia and metropolitan Adelaide. For more information please look at *Preface* and *Definitions & Explanatory Notes*

**Table 23c: Crashes and Casualties by Local Government Area & Severity
Metropolitan Adelaide: All Roads**

Local Government Area	Crashes					Casualties			
	Fatal Crashes	Serious Injury Crashes	Minor Injury Crashes	Property Damage Crashes	ALL CRASHES	Fatalities	Serious Injuries	Minor Injuries	ALL CASUALTIES
Adelaide Hills Council	5	43	140	320	508	5	54	186	245
Alexandrina Council ¹	0	1	1	0	2	0	1	1	2
Barossa Council ¹	0	1	2	6	9	0	2	2	4
CC Campbelltown	2	5	110	196	313	2	6	131	139
CC Marion	2	15	281	565	863	2	15	345	362
CC Mitcham	6	21	279	503	809	6	21	314	341
CC Norwd, Pynhm & St Ptrs	1	18	236	466	721	1	18	278	297
City of Adelaide	1	23	284	667	975	1	23	323	347
City of Burnside	1	10	111	266	388	1	11	123	135
City of Charles Sturt	2	21	414	833	1270	3	25	511	539
City of Holdfast Bay	0	12	123	274	409	0	12	140	152
City of Onkaparinga	4	52	419	819	1294	5	61	539	605
City of Playford	2	30	259	534	825	2	36	326	364
City of Port Adelaide Enfield	5	39	415	948	1407	5	54	508	567
City of Prospect	1	9	102	226	338	1	12	127	140
City of Salisbury	3	35	423	928	1389	3	37	566	606
City of Tea Tree Gully	1	18	157	324	500	1	23	208	232
City of Unley	2	10	153	317	482	2	14	171	187
City of West Torrens	1	15	250	586	852	1	16	294	311
CT Gawler	0	5	50	116	171	0	5	68	73
DC Mallala ¹	0	2	14	9	25	0	2	22	24
DC Mt Barker	1	5	77	186	269	1	5	93	99
Light RC ¹	0	2	24	31	57	0	4	35	39
Walkerville Town Council	1	2	55	122	180	1	2	64	67
Total	41	394	4379	9242	14056	43	459	5375	5877

¹ Alexandrina Council, Barossa Council, DC Mallala and Light RC are situated in both rural South Australia and metropolitan Adelaide; For more information please look at *Preface* and *Definitions & Explanatory Notes*

**Table 24a: Crashes and Casualties by Local Government Area & Severity
Rural: Local Government Roads**

Local Government Area	Crashes				ALL CRASHES	Casualties			
	Fatal Crashes	Serious Injury Crashes	Minor Injury Crashes	Property Damage Crashes		Fatalities	Serious Injuries	Minor Injuries	ALL CASUALTIES
Alexandrina Council ¹	3	7	21	47	78	3	8	31	42
Barossa Council ¹	2	8	12	39	61	2	10	18	30
Barunga West DC	0	0	3	4	7	0	0	6	6
Berri Barmera Council	0	5	8	21	34	0	5	11	16
CC Mt Gambier	1	4	14	82	101	1	4	16	21
CC Port Augusta	0	3	5	25	33	0	3	5	8
CC Port Lincoln	0	2	6	29	37	0	2	8	10
CC Whyalla	0	6	15	53	74	0	6	15	21
Clare & Gilbert Valleys DC	1	1	4	15	21	1	1	5	7
Coorong DC	1	3	2	5	11	1	3	2	6
Copper Coast DC	0	0	5	27	32	0	0	9	9
DC Ceduna	0	1	2	2	5	0	3	2	5
DC Cleve	0	1	1	3	5	0	2	1	3
DC Coober Pedy	0	0	0	2	2	0	0	0	0
DC Elliston	1	0	2	2	5	2	0	2	4
DC Franklin Harbor	1	0	2	1	4	1	0	2	3
DC Grant	2	0	6	22	30	2	1	6	9
DC Karoonda East Murray	0	3	0	4	7	0	3	4	7
DC Kimba	0	0	1	3	4	0	0	1	1
DC Kingston	0	0	2	3	5	0	0	2	2
DC Lower Eyre Peninsula	1	1	3	7	12	1	1	4	6
DC Mallala ¹	0	2	4	11	17	0	2	4	6
DC Mt Remarkable	0	1	2	1	4	0	1	3	4
DC Orroroo/Carrieton	0	0	1	1	2	0	0	1	1
DC Peterborough	0	1	0	1	2	0	2	1	3
Subtotal	13	49	121	410	593	14	57	159	230

¹ Alexandrina Council, Barossa Council and DC Mallala are situated in both rural South Australia and metropolitan Adelaide. For more information please look at *Preface* and *Definitions & Explanatory Notes*

Table 24a: Crashes and Casualties by Local Government Area & Severity
Rural: Local Government Roads (cont...)

Local Government Area	Crashes					Casualties			
	Fatal Crashes	Serious Injury Crashes	Minor Injury Crashes	Property Damage Crashes	ALL CRASHES	Fatalities	Serious Injuries	Minor Injuries	ALL CASUALTIES
DC Renmark Paringa	0	1	5	16	22	0	1	5	6
DC Robe	0	0	0	2	2	0	0	0	0
DC Streaky Bay	0	0	1	4	5	0	0	2	2
DC Tatiara	2	5	2	13	22	2	5	7	14
DC Tumby Bay	0	2	2	5	9	0	3	4	7
DC Victor Harbor	0	6	9	29	44	0	6	11	17
DC Wudinna	0	1	0	3	4	0	1	0	1
DC Yankallila	0	2	4	10	16	0	2	4	6
DC Yorke Peninsula	1	3	10	21	35	1	5	24	30
Flinders Rangers Council	0	1	0	4	5	0	1	0	1
Kangaroo Island Council	1	5	9	10	25	1	7	12	20
Light RC ¹	0	2	7	21	30	0	3	7	10
Loxton Waikarie DC	0	3	5	17	25	0	5	9	14
MC Roxby Downs	0	0	2	5	7	0	0	2	2
Mid Murray DC	0	5	10	16	31	0	6	10	16
Naracoorte Lucindale Council	0	3	4	13	20	0	3	5	8
Northern Areas Council	0	0	3	3	6	0	0	4	4
Port Pirie City DC	2	4	18	36	60	2	4	20	26
RC Goyder	1	0	4	8	13	1	0	4	5
RC Murray Bridge	1	8	22	48	79	1	13	32	46
Southern Mallee DC	0	3	2	1	6	0	3	3	6
Unincorporated (Eastern)	0	0	0	1	1	0	0	0	0
Unincorporated (N & W)	2	3	5	12	22	2	4	5	11
Wakefield RC	1	3	9	9	22	1	3	19	23
Wattle Range Council	1	3	7	13	24	1	3	8	12
Subtotal	12	63	140	320	535	12	78	197	287
Total	25	112	261	730	1128	26	135	356	517

¹ Light RC is situated in both rural South Australia and metropolitan Adelaide. For more information please look at *Preface* and *Definitions & Explanatory Notes*

**Table 24b: Crashes and Casualties by Local Government Area & Severity
Rural: DPTI Roads**

Local Government Area	Crashes					Casualties			
	Fatal Crashes	Serious Injury Crashes	Minor Injury Crashes	Property Damage Crashes	ALL CRASHES	Fatalities	Serious Injuries	Minor Injuries	ALL CASUALTIES
Alexandrina Council ¹	1	12	45	53	111	1	19	64	84
Barossa Council ¹	1	8	20	47	76	1	11	28	40
Barunga West DC	0	5	3	11	19	0	5	4	9
Berri Barmera Council	2	3	9	21	35	3	5	17	25
CC Mt Gambier	0	1	8	54	63	0	1	10	11
CC Port Augusta	1	1	10	29	41	1	1	13	15
CC Port Lincoln	0	0	9	35	44	0	0	11	11
CC Whyalla	0	1	7	33	41	0	1	8	9
Clare & Gilbert Valleys DC	1	3	9	17	30	1	4	11	16
Coorong DC	2	6	11	20	39	3	9	20	32
Copper Coast DC	0	3	9	25	37	0	3	13	16
DC Ceduna	0	5	5	8	18	0	6	10	16
DC Cleve	0	3	2	0	5	0	3	2	5
DC Coober Pedy	0	0	1	1	2	0	0	1	1
DC Elliston	0	1	1	6	8	0	1	1	2
DC Franklin Harbor	0	2	4	3	9	0	2	5	7
DC Grant	1	4	7	24	36	1	5	9	15
DC Karoonda East Murray	0	0	3	3	6	0	0	3	3
DC Kimba	0	1	2	2	5	0	1	3	4
DC Kingston	0	2	2	5	9	0	2	2	4
DC Lower Eyre Peninsula	0	2	6	7	15	0	2	8	10
DC Mallala ¹	0	3	3	18	24	0	4	5	9
DC Mt Remarkable	2	3	5	10	20	2	4	8	14
DC Orroroo/Carrieton	0	0	2	2	4	0	0	3	3
DC Peterborough	0	1	1	3	5	0	1	1	2
Subtotal	11	70	184	437	702	13	90	260	363

¹ Alexandrina Council, Barossa Council and DC Mallala are situated in both rural South Australia and metropolitan Adelaide. For more information please look at *Preface* and *Definitions & Explanatory Notes*

Table 24b: Crashes and Casualties by Local Government Area & Severity
Rural: DPTI Roads (cont...)

Local Government Area	Crashes					Casualties			
	Fatal Crashes	Serious Injury Crashes	Minor Injury Crashes	Property Damage Crashes	ALL CRASHES	Fatalities	Serious Injuries	Minor Injuries	ALL CASUALTIES
DC Renmark Paringa	0	1	4	20	25	0	1	7	8
DC Robe	0	1	3	4	8	0	1	4	5
DC Streaky Bay	0	0	5	7	12	0	0	6	6
DC Tatiara	0	6	8	16	30	0	6	14	20
DC Tumby Bay	0	1	3	3	7	0	1	3	4
DC Victor Harbor	1	3	12	20	36	1	3	17	21
DC Wudinna	0	0	3	1	4	0	0	3	3
DC Yankallila	0	8	8	20	36	0	8	9	17
DC Yorke Peninsula	1	3	15	21	40	1	3	17	21
Flinders Rangers Council	0	2	1	5	8	0	5	1	6
Kangaroo Island Council	1	2	2	11	16	1	2	5	8
Light RC ¹	2	4	11	26	43	3	6	16	25
Loxton Waikarie DC	1	4	15	38	58	1	5	20	26
MC Roxby Downs	0	0	3	1	4	0	0	3	3
Mid Murray DC	1	7	14	22	44	1	8	15	24
Naracoorte Lucindale Council	0	2	9	22	33	0	4	12	16
Northern Areas Council	0	3	3	11	17	0	3	3	6
Port Pirie City DC	1	2	9	19	31	1	5	13	19
RC Goyder	0	1	1	15	17	0	1	2	3
RC Murray Bridge	0	8	18	44	70	0	8	30	38
Southern Mallee DC	0	1	2	6	9	0	1	4	5
Unincorporated (Eastern)	0	3	0	3	6	0	3	2	5
Unincorporated (N & W)	3	14	40	84	141	5	16	56	77
Wakefield RC	1	5	8	27	41	1	6	15	22
Wattle Range Council	0	9	16	28	53	0	10	22	32
Subtotal	12	90	213	474	789	15	106	299	420
Total	23	160	397	911	1491	28	196	559	783

¹ Light RC is situated in both rural South Australia and metropolitan Adelaide. For more information please look at *Preface* and *Definitions & Explanatory Notes*

**Table 24c: Crashes and Casualties by Local Government Area & Severity
Rural: All Roads**

Local Government Area	Crashes					Casualties			
	Fatal Crashes	Serious Injury Crashes	Minor Injury Crashes	Property Damage Crashes	ALL CRASHES	Fatalities	Serious Injuries	Minor Injuries	ALL CASUALTIES
Alexandrina Council ¹	4	19	66	100	189	4	27	95	126
Barossa Council ¹	3	16	32	86	137	3	21	46	70
Barunga West DC	0	5	6	15	26	0	5	10	15
Berri Barmera Council	2	8	17	42	69	3	10	28	41
CC Mt Gambier	1	5	22	136	164	1	5	26	32
CC Port Augusta	1	4	15	54	74	1	4	18	23
CC Port Lincoln	0	2	15	64	81	0	2	19	21
CC Whyalla	0	7	22	86	115	0	7	23	30
Clare & Gilbert Valleys DC	2	4	13	32	51	2	5	16	23
Coorong DC	3	9	13	25	50	4	12	22	38
Copper Coast DC	0	3	14	52	69	0	3	22	25
DC Ceduna	0	6	7	10	23	0	9	12	21
DC Cleve	0	4	3	3	10	0	5	3	8
DC Coober Pedy	0	0	1	3	4	0	0	1	1
DC Elliston	1	1	3	8	13	2	1	3	6
DC Franklin Harbor	1	2	6	4	13	1	2	7	10
DC Grant	3	4	13	46	66	3	6	15	24
DC Karoonda East Murray	0	3	3	7	13	0	3	7	10
DC Kimba	0	1	3	5	9	0	1	4	5
DC Kingston	0	2	4	8	14	0	2	4	6
DC Lower Eyre Peninsula	1	3	9	14	27	1	3	12	16
DC Mallala ¹	0	5	7	29	41	0	6	9	15
DC Mt Remarkable	2	4	7	11	24	2	5	11	18
DC Orroroo/Carrieton	0	0	3	3	4	0	0	4	4
DC Peterborough	0	2	1	4	7	0	3	2	5
Subtotal	24	119	305	847	1293	27	147	419	593

¹ Alexandrina Council, Barossa Council and DC Mallala are situated in both rural South Australia and metropolitan Adelaide. For more information please look at *Preface* and *Definitions & Explanatory Notes*

Table 24c: Crashes and Casualties by Local Government Area & Severity
Rural: All Roads (cont...)

Local Government Area	Crashes					Casualties			
	Fatal Crashes	Serious Injury Crashes	Minor Injury Crashes	Property Damage Crashes	ALL CRASHES	Fatalities	Serious Injuries	Minor Injuries	ALL CASUALTIES
DC Renmark Paringa	0	2	9	36	47	0	2	12	14
DC Robe	0	1	3	6	10	0	1	4	5
DC Streaky Bay	0	0	6	11	17	0	0	8	8
DC Tatiara	2	11	10	29	52	2	11	21	34
DC Tumby Bay	0	3	5	8	16	0	4	7	11
DC Victor Harbor	1	9	21	49	80	1	9	28	38
DC Wudinna	0	1	3	4	8	0	1	3	4
DC Yankallila	0	10	12	30	52	0	10	13	23
DC Yorke Peninsula	2	6	25	42	75	2	8	41	51
Flinders Rangers Council	0	3	1	9	13	0	6	1	7
Kangaroo Island Council	2	7	11	21	41	2	9	17	28
Light RC ¹	2	6	18	47	73	3	9	23	35
Loxton Waikarie DC	1	7	20	55	83	1	10	29	40
MC Roxby Downs	0	0	5	6	11	0	0	5	5
Mid Murray DC	1	12	24	38	75	1	14	25	40
Naracoorte Lucindale Council	0	5	13	35	53	0	7	17	24
Northern Areas Council	0	3	6	14	23	0	3	7	10
Port Pirie City DC	3	6	27	55	91	3	9	33	45
RC Goyder	1	1	5	23	30	1	1	6	8
RC Murray Bridge	1	16	40	92	149	1	21	62	84
Southern Mallee DC	0	4	4	7	15	0	4	7	11
Unincorporated (Eastern)	0	3	0	4	7	0	3	2	5
Unincorporated (N & W)	5	17	45	96	163	7	20	61	88
Wakefield RC	2	8	17	36	63	2	9	34	45
Wattle Range Council	1	12	23	41	77	1	13	30	44
Subtotal	24	153	353	794	1324	27	184	496	707
Total	48	272	658	1641	2617	54	331	915	1300

¹ Light RC is situated in both rural South Australia and metropolitan Adelaide. For more information please look at *Preface* and *Definitions & Explanatory Notes*

Table 25a: Top Intersections
Casualty Crashes, Base Year 2013

Intersection	Base Year	Previous Years			
	2013	2012	2011	2010	2009
Main North Road – Grand Junction Road	18	9	12	11	3
South Road – Torrens Road	13	13	10	11	13
Main North Road - McIntyre Road	12	5	12	7	4
Magill Road - Glynburn Road	11	3	3	6	10
Sturt Road - Marion Road	10	5	9	17	5
War Memorial Drive - Park Terrace	9	6	5	4	3
Main North Road – Philip Highway	9	13	9	9	4
Seacombe Road - Main South Road	9	1	5	2	1
South Road - Manton Street	9	7	9	9	7
Sir Donald Bradman Drive - West Terrace	8	2	2	9	3
Portrush Road - Payneham Road	8	5	3	7	8
Gynburn Road - Montacute Road	8	5	5	3	1
Brighton Road - Anzac Highway	8	5	5	4	3
Fairfield Road - Main North Road	8	1	3	7	1
Regency Road - Main North Road	7	9	11	8	10
Sturt Road - Main South Road	7	7	8	7	4
Sturt Road - Brighton Road	7	4	3	1	1
Anzac Highway - Richmond Road	7	8	9	6	9
South Road - Port Road	7	6	3	11	8
Newton Road - Gorge Road	7	2	2	6	5
Ifould Road - Main North Road	7	0	0	0	0
Hampstead Road - Grand Junction Road	7	8	7	5	6
Bolivar Road - Port Wakefield Road	7	4	4	3	5
Churchill Road - Regency Road	7	4	5	4	4
Marion Road - Anzac Highway	6	2	2	10	3
Churchill Road - Port Wakefield Road	6	4	4	4	4
Fullarton Road - Dequetteville Terrace	6	10	8	8	12
Greenhill Road - Fullarton Road	6	8	6	1	4
Henley Beach Road - South Road	6	5	8	6	2
King William Road - Greenhill Road	6	1	5	6	6
Main North Road - John Rice Avenue	6	4	2	6	5
Prospect Road - Fitzroy Terrace	6	6	13	4	10
Regency Road - Hampstead Road	6	4	4	3	1
West Terrace - Hindley Street	6	2	4	2	3
Main North Road - Montague Road	6	8	5	6	8
Main North Road - Midway Road	6	1	1	3	4

Table 25b: Top Intersections
All Crashes, Base Year 2013

Intersection	Base Year	Previous Years			
	2013	2012	2011	2010	2009
Fullarton Road - Dequetteville Terrace	43	76	69	55	53
Main North Road – Grand Junction Road	38	45	53	45	32
Main North Road – McIntyre Road	26	38	43	29	16
Main North Road - Philip Highway	26	37	25	20	17
South Road – Torrens Road	26	29	33	36	33
Regency Road – Main North Road	24	44	38	31	36
Main North Road – Montague Road	22	26	25	29	30
South Road – Manton Street	22	35	29	30	29
South Road – Port Road	20	42	36	31	29
Stephen Terrace - Northcote Terrace	20	28	18	17	20
Grenhill Road - Fullarton Road	20	29	17	11	12
Woolville Road - Port Road	20	24	19	11	18
Churchill Road - Port Wakefield Road	19	21	15	16	16
Glynburn Road - Montacute Road	19	17	25	18	17
Marion Road - Anzac Highway	19	16	19	30	16
Sturt Road - Marion Road	19	44	38	43	26
Goodwood Road - Cross Road	18	19	26	21	37
Sudholz Road - North East Road	18	26	41	28	39
Magill Road - Gynburn Road	17	13	11	14	17
Muno Para Blvd - Main North Road	17	28	20	18	18
Sir Donald Bradman Road – West Terrace	17	26	24	24	25
Hampstead Road - Grand Junction Road	17	29	35	21	24
Brighton Road - Anzac Highway	17	20	25	16	21
Fairfield Road - Main North Road	17	15	14	18	9
Prospect Road – Fitzroy Terrace	17	26	39	27	30
Henley Beach Road - South Road	16	16	22	20	18
Main North Road - John Rice Avenue	16	14	9	17	19
Marion Road - Cross Road	16	21	26	17	25
Montague Road - Bridge Road	16	23	19	25	15
Seacombe Road - Main South Road	16	4	14	11	8
Glover Avenue - West Terrace	15	20	12	10	19
Waterloo Corner Road - Pt Wakefield Road	15	22	25	9	5
Walkleys Road - Montague Road	15	19	12	10	6
Sturt Road - Main South Road	15	24	26	29	19
Salisbury Highway – Elder Smith Drive	15	27	21	32	22
Portrush Road - Magill Road	15	26	35	16	16
Hanson Road - Grand Junction Road	15	24	24	15	20
Churchill Road - Regency Road	15	19	16	13	20
Bolivar Road - Port Wakefield Road	15	21	19	20	21
Muller Road - North East Road	15	14	13	13	18

Table 26: Motor Vehicles Involved in & Responsible for Crashes by Region and Severity

Vehicle Type & Region	Fatal Crashes		Serious Injury Crashes		Minor Injury Crashes		Property Damage Crashes		ALL CRASHES	
	Involved	Responsible	Involved	Responsible	Involved	Responsible	Involved	Responsible	Involved	Responsible
PASSENGER VEHICLES										
Metropolitan Adelaide	51	27	469	252	7706	3746	16804	8355	25030	12380
Rural	50	38	266	194	799	542	2255	1341	3370	2115
Subtotal	101	65	735	446	8505	4288	19059	9696	28400	14495
LIGHT TRUCKS(>4.5 Tonnes)										
Metropolitan Adelaide	0	0	2	1	23	13	54	39	79	53
Rural	1	0	1	1	3	2	18	13	23	16
Subtotal	1	0	3	2	26	15	72	52	102	69
HEAVY VEHICLE¹										
Metropolitan Adelaide	5	2	21	6	164	116	534	328	724	452
Rural	7	1	25	14	32	24	142	87	206	126
Subtotal	12	3	46	20	196	140	676	415	930	578
BUSES										
Metropolitan Adelaide	0	0	6	2	52	27	121	50	179	79
Rural	0	0	0	0	4	0	4	1	8	1
Subtotal	0	0	6	2	56	27	125	51	187	80
MOTORCYCLES										
Metropolitan Adelaide	7	4	84	52	323	181	389	183	803	420
Rural	5	5	48	41	60	39	39	23	152	108
Subtotal	12	9	132	93	383	220	428	206	955	528
BICYCLES										
Metropolitan Adelaide	3	2	51	27	478	118	412	99	944	246
Rural	2	1	15	6	22	10	11	3	50	20
Subtotal	5	3	66	33	500	128	423	102	994	266
OTHERS VEHICLE TYPES										
Metropolitan Adelaide	0	0	3	1	21	12	60	29	84	42
Rural	1	1	5	2	5	4	14	10	25	17
Subtotal	1	1	8	3	26	16	74	39	109	59
ALL VEHICLE TYPES										
Metropolitan Adelaide	66	35	636	341	8767	4213	18374	9083	27843	13672
Rural	66	46	360	258	925	621	2483	1478	3834	2403
TOTAL	132	81	996	599	9692	4834	20857	10561	31677	16075

¹ Excludes Buses

NOTE: Excludes data for crashes where responsibility not attributed to a road user. For example, responsibility not recorded or unriden animal responsible

Table 27: Crashes and Casualties by Vehicle Movement of Motor Vehicle Responsible and Severity (excl Pedestrian)

Vehicle Movement of Responsible Unit	Crashes					Casualties			
	Fatal Crashes	Serious Injury Crashes	Minor Injury Crashes	Property Damage Crashes	ALL CRASHES	Fatalities	Serious Injuries	Minor Injuries	ALL CASUALTIES
Right Turn	12	78	828	1932	2850	13	94	1064	1171
Left Turn	2	26	292	662	982	2	29	332	363
U Turn	0	5	75	225	305	0	6	100	106
Swerving	5	22	215	687	929	5	26	244	275
Reversing	1	1	24	105	131	1	2	26	29
Stopped on Carriageway	0	1	2	5	8	0	1	2	3
Straight Ahead	58	412	3061	5920	9451	64	504	3918	4486
Entering Private Driveway	0	6	54	104	164	0	6	64	70
Leaving Private Driveway	2	23	149	471	645	3	25	170	198
Parked	0	1	21	47	69	0	1	22	23
Parking - Angle	0	0	8	6	14	0	0	8	8
Parking - Parallel	0	0	4	31	35	0	0	4	4
Unparking -Angle	0	3	12	37	52	0	3	18	21
UnParking - Parallel	0	4	23	138	165	0	4	25	29
Overtaking - on Right	1	16	52	136	205	1	18	65	84
Overtaking - on Left	0	1	14	54	69	0	1	15	16
Other	0	0	0	1	1	0	0	0	0
TOTAL	81	599	4834	10561	16075	89	720	6077	6886

NOTE: Excludes data for crashes where responsibility not attributed to a road user. For example, responsibility not recorded or unriden animal responsible

Table 28: Crashes and Casualties by Pedestrian Responsible Movement and Severity

Pedestrian Movement	Crashes					Casualties			
	Fatal Crashes	Serious Injury Crashes	Minor Injury Crashes	Property Damage Crashes	ALL CRASHES	Fatalities	Serious Injuries	Minor Injuries	ALL CASUALTIES
Right Turn	0	0	0	1	1	0	0	0	0
Straight Ahead	0	2	2	3	7	0	2	2	4
Leaving Private Driveway	0	0	1	0	1	0	0	1	1
Walking on Footpath	0	0	0	1	1	0	0	0	0
On Pedestrian Crossing	0	0	2	0	2	0	0	2	2
Within 30m of Pedestrian Crossing	0	3	2	0	5	0	3	3	6
Alighted from Parked Vehicle	0	1	4	0	5	0	2	4	6
Walked from between Parked Vehicles	2	7	6	1	16	2	7	6	15
Walking on Road	0	0	2	0	2	0	0	2	2
Pushing or Working on Vehicle	0	0	0	1	1	0	0	0	0
Playing on Roadway	2	0	2	0	4	2	0	2	4
Crossing without Control	4	43	77	2	126	4	43	79	126
Crossing with Traffic Signals	0	1	6	0	7	0	1	6	7
TOTAL	8	57	104	9	178	8	58	107	173

Table 29: Crashes by Motor Vehicle Type Involved and Severity¹

Type of Vehicle ¹	Fatal Crashes	Serious Injury Crashes	Minor Injury Crashes	Property Damage Crashes	ALL CRASHES
Passenger Vehicle	87	632	6353	14627	21699
Light Truck (>4.5 Tonnes)	1	3	26	72	102
Heavy Vehicle	12	46	194	661	913
Buses	0	6	55	123	184
Motorcycles	11	131	377	417	936
Bicycles	5	60	488	420	973
Other	1	8	26	73	108

Table 30: Crashes and Casualties by Speed Involvement² and Severity

Speed Involvement ² & Region	Crashes					Casualties			
	Fatal Crashes	Serious Injury Crashes	Minor Injury Crashes	Property Damage Crashes	ALL CRASHES	Fatalities	Serious Injuries	Minor Injuries	ALL CASUALTIES
METROPOLITAN									
Yes	8	50	138	292	488	9	63	187	259
No	33	344	4241	8950	13568	34	396	5188	5618
Sub-total	41	394	4379	9242	14056	43	459	5375	5877
RURAL									
Yes	19	65	34	87	205	19	82	60	161
No	29	207	624	1554	2414	35	249	855	1139
Sub-total	48	272	658	1641	2619	54	331	915	1300
TOTAL	89	666	5037	10883	16675	97	790	6290	7177

¹ The vehicle type categories are not mutually exclusive and must not be added together
Where one crash has involved two or more of the same vehicle type, then it has been counted once.

² Speed contribution definition is located under *Definitions & Explanations*

ROAD CASUALTIES in 2013

Road Users
Seatbelts & Helmets
Age & Sex Distribution
Alcohol
Drug
Licence
Involvement & Responsibility

Table 31: Casualties by Road User Type, Severity, Age and Sex

Road User Types	Sex	0-15			16-19			20-24			25-29			30-39			40-49			50-59			60-69			70+			Unknown			ALL CASUALTIES		
		F	SI	MI	F	SI	MI	F	SI	MI	F	SI	MI	F	SI	MI	F	SI	MI	F	SI	MI	F	SI	MI	F	SI	MI	F	SI	MI			
VEHICLE OCCUPANT																																		
Driver	M	0	0	1	0	18	159	7	31	186	2	28	171	2	27	307	9	32	286	5	26	222	4	22	132	8	29	176	0	1	5	37	214	1645
	F	0	0	0	1	11	189	1	16	302	0	18	294	0	30	436	2	25	386	3	27	298	1	19	173	3	22	134	0	2	2	11	170	2214
	Subtotal¹	0	0	1	1	29	349	8	47	488	2	46	465	2	57	743	11	57	672	8	53	520	5	41	305	11	51	310	0	3	7	48	384	3860
Passenger	M	1	6	147	1	5	58	1	10	47	0	7	45	1	10	41	0	6	28	2	3	15	0	3	21	0	4	11	0	10	71	6	64	484
	F	3	8	150	0	6	84	2	8	84	0	4	62	0	4	75	1	3	71	1	8	57	1	3	56	3	6	67	0	8	126	11	58	832
	Subtotal¹	4	14	300	1	11	142	3	18	132	0	11	107	1	14	117	1	9	99	3	11	72	1	6	77	3	10	78	0	18	202	17	122	1326
MOTORCYCLIST																																		
Rider	M	0	1	0	0	5	25	1	14	59	2	12	35	2	20	51	2	25	49	1	25	63	2	11	24	2	3	7	0	0	2	12	116	315
	F	0	0	0	0	0	4	0	1	11	0	1	11	0	4	7	0	2	12	0	3	7	0	1	1	0	1	0	0	0	0	0	13	53
	Subtotal¹	0	1	0	0	5	29	1	15	70	2	13	46	2	24	58	2	27	61	1	28	70	2	12	25	2	4	7	0	0	3	12	129	369
Pillion Passenger	M	0	0	1	0	0	1	0	0	2	0	0	2	0	0	1	0	0	0	0	0	0	0	0	0	0	0	0	0	0	0	0	0	7
	F	0	1	0	0	0	0	0	0	1	0	1	2	0	1	2	0	1	2	0	1	3	0	0	0	0	0	0	0	0	1	0	5	11
	Subtotal¹	0	1	1	0	0	1	0	0	3	0	1	4	0	1	3	0	1	2	0	1	3	0	0	0	0	0	0	0	0	1	0	5	18
PEDESTRIAN																																		
M	M	1	13	14	0	2	10	1	4	10	0	7	10	0	4	8	2	6	13	0	7	13	0	5	14	5	6	25	0	2	6	9	56	123
	F	1	3	9	0	0	8	0	3	12	1	1	7	0	5	12	2	5	13	0	1	9	0	3	14	2	7	17	0	3	7	6	31	108
	Subtotal¹	2	16	23	0	2	18	1	7	22	1	8	17	0	9	20	4	11	26	0	8	22	0	8	28	7	13	42	0	5	13	15	87	231
BICYCLIST	M	0	5	18	0	3	22	0	5	28	0	2	39	1	5	89	1	11	75	0	12	61	1	3	14	1	4	12	0	2	8	4	52	366
	F	0	0	6	0	0	8	0	1	14	0	0	14	0	2	19	1	4	24	0	4	21	0	0	8	0	0	2	0	0	4	1	11	120
	Subtotal¹	0	5	24	0	3	30	0	6	42	0	2	53	1	7	108	2	15	99	0	16	82	1	3	22	1	4	14	0	2	12	5	63	486
OTHER ROAD USER																																		
M	M	0	0	0	0	0	0	0	0	0	0	0	0	0	0	0	0	0	0	0	0	0	0	0	0	0	0	0	0	0	0	0	0	0
	F	0	0	0	0	0	0	0	0	0	0	0	0	0	0	0	0	0	0	0	0	0	0	0	0	0	0	0	0	0	0	0	0	0
	Subtotal¹	0	0	0	0	0	0	0	0	0	0	0	0	0	0	0	0	0	0	0	0	0	0	0	0	0	0	0	0	0	0	0	0	0
ALL ROAD USERS	M	2	25	181	1	33	275	10	64	332	4	56	302	6	66	497	14	80	451	8	73	374	7	44	205	16	46	231	0	15	92	68	502	2940
	F	4	12	165	1	17	293	3	29	424	1	25	390	0	46	551	6	40	508	4	44	395	2	26	252	8	36	220	0	13	140	29	288	3338
	TOTAL¹	6	37	349	2	50	569	13	93	757	5	81	692	6	112	1049	20	120	959	12	117	769	9	70	457	24	82	451	0	28	238	97	790	6290

¹Unknown sex included

Table 32: Casualties by Unit Type and Severity

Unit Type	Fatalities	Serious Injuries	Minor Injuries	ALL CASUALTIES
Passenger Vehicle	63	490	5093	5646
Light Truck (<4.5Tonnes)	0	0	9	9
Heavy Vehicle ¹	1	14	44	59
Bus	0	0	28	28
Motorcycle	12	134	387	533
Bicycle	5	63	486	554
Pedestrian	15	87	231	333
Other	1	2	12	15
TOTAL	97	790	6290	7177

Table 33: Motor Vehicle Casualties by Position in Vehicle and Severity (excl. Motorcycles & Bicycles)

Position in Vehicle	Fatalities	Serious Injuries	Minor Injuries	ALL CASUALTIES
FRONT SEAT PASSENGER				
Driver ²	48	384	3860	4292
Middle	0	1	5	6
Left	11	80	868	959
REAR SEAT PASSENGER				
Right	2	11	165	178
Middle	1	5	41	47
Left	2	14	150	166
CHILD NURSED				
Front	0	0	0	0
Rear	0	0	0	0
UTILITY/TRUCK				
Rear	0	2	0	2
VAN				
Passenger	0	0	0	0
BUS				
Passenger	0	0	24	24
MOTORCYCLE				
Rider	12	129	369	510
Passenger	0	5	18	23
TOWED VEHICLE				
Occupant	0	0	1	1
UNKNOWN/OTHER				
	1	9	74	84
Subtotal	77	640	5575	6292
TOTAL³	97	790	6290	7177

¹ Excludes Buses

² Includes drivers of all vehicles – passenger, heavy truck, light truck & other

³ Includes not applicable vehicle occupant user types

Table 34: Casualties by Road User Type, Safety Device and Severity

Casualty Type & Safety Device Use ¹	Fatalities	Serious Injuries	Minor Injuries	ALL CASUALTIES
DRIVER				
Fitted – Worn	29	269	3454	3752
Fitted – Not Worn	12	16	35	63
Fitted – Unknown if Worn	6	94	358	458
Not Fitted	1	0	4	5
Unknown	0	5	9	14
Subtotal	48	384	3860	4292
PASSENGER				
Fitted – Worn	9	85	1077	1171
Fitted – Not Worn	5	5	21	31
Fitted – Unknown if Worn	0	26	142	168
Child Restraint – Worn	2	2	52	56
Child Restraint– Not Worn	0	1	2	3
Not Fitted	0	1	18	19
Not Applicable	1	1	9	11
Unknown	0	1	5	6
Subtotal	17	122	1326	1465
MOTORCYCLE RIDER/PASSENGER				
Helmet Worn	8	128	366	502
Helmet – Not Worn	4	6	6	16
Unknown	0	0	15	15
Subtotal	12	134	387	533
BICYCLIST RIDER/PASSENGER				
Helmet Worn	5	59	459	523
Helmet – Not Worn	0	3	10	13
Unknown	0	1	17	18
Subtotal	5	63	486	554
ALL CASUALTIES				
Device Worn	53	543	5408	6004
Device Not Worn	22	32	96	150
Unknown/Not Applicable	7	128	555	690
Subtotal	82	703	6059	6844
TOTAL²	97	790	6290	7177

¹ Police reporting of safety device usage is often not based on direct observation by police officers and may be reliant upon statements by the casualties themselves or other involved parties.

² Includes not applicable safety device use/users

Table 35a: Driver and Motorcycle Rider Casualties by Age, Sex, BAC Fatal

Age	Sex	Blood Alcohol Concentration						Not Tested/ Unknown	ALL CAUSALITIES
		Negative	0.001-0.049	0.050-0.079	0.080-0.149	0.150-0.199	.200+		
0-15	M	0	0	0	0	0	0	0	0
	F	0	0	0	0	0	0	0	0
	Subtotal¹	0	0	0	0	0	0	0	0
16-19	M	0	0	0	0	0	0	0	0
	F	1	0	0	0	0	0	0	1
	Subtotal¹	1	0	0	0	0	0	0	1
20-24	M	4	1	0	2	1	0	0	8
	F	1	0	0	0	0	0	0	1
	Subtotal¹	5	1	0	2	1	0	0	9
25-29	M	0	2	0	1	0	1	0	4
	F	0	0	0	0	0	0	0	0
	Subtotal¹	0	2	0	1	0	1	0	4
30-39	M	1	0	0	0	1	1	1	4
	F	0	0	0	0	0	0	0	0
	Subtotal¹	1	0	0	0	1	1	1	4
40-49	M	8	0	0	0	0	3	0	11
	F	1	0	0	0	0	1	0	2
	Subtotal¹	9	0	0	0	0	4	0	13
50-59	M	3	0	1	1	0	1	0	6
	F	3	0	0	0	0	0	0	3
	Subtotal¹	6	0	1	1	0	1	0	9
60-69	M	5	0	0	0	0	0	1	6
	F	1	0	0	0	0	0	0	1
	Subtotal¹	6	0	0	0	0	0	1	7
70+	M	9	0	0	0	0	0	1	10
	F	1	0	0	0	0	0	2	3
	Subtotal¹	10	0	0	0	0	0	3	13
Unknown	M	0	0	0	0	0	0	0	0
	F	0	0	0	0	0	0	0	0
	Subtotal¹	0	0	0	0	0	0	0	0
ALL AGES	M	30	3	1	4	2	6	3	49
	F	8	0	0	0	0	1	2	11
	TOTAL¹	38	3	1	4	2	7	5	60

¹ Unknown sex included

Table 35b: Driver and Motorcycle Rider Casualties by Age, Sex, BAC Serious Injury

Age	Sex	Blood Alcohol Concentration						Not Tested/ Unknown	ALL CAUSALITIES
		Negative	0.001-0.049	0.050-0.079	0.080-0.149	0.150-0.199	.200+		
0-15	M	0	0	0	0	0	0	1	1
	F	0	0	0	0	0	0	0	0
	Subtotal¹	0	0	0	0	0	0	1	1
16-19	M	13	0	0	2	0	0	8	23
	F	8	0	0	0	0	0	3	11
	Subtotal¹	21	0	0	2	0	0	11	34
20-24	M	21	1	1	4	2	0	16	45
	F	6	0	0	0	0	0	11	17
	Subtotal¹	27	1	1	4	2	0	27	62
25-29	M	18	1	1	3	0	0	17	40
	F	12	0	0	1	0	0	6	19
	Subtotal¹	30	1	1	4	0	0	23	59
30-39	M	20	2	0	4	0	1	20	47
	F	19	0	0	2	0	0	13	34
	Subtotal¹	39	2	0	6	0	1	33	81
40-49	M	29	0	2	2	2	2	20	57
	F	20	0	0	0	0	0	7	27
	Subtotal¹	49	0	2	2	2	2	27	84
50-59	M	24	1	1	1	0	2	22	51
	F	17	0	0	1	0	1	11	30
	Subtotal¹	41	1	1	2	0	3	33	81
60-69	M	18	0	0	0	1	0	14	33
	F	13	0	0	0	0	0	7	20
	Subtotal¹	31	0	0	0	1	0	21	53
70+	M	15	0	0	2	0	0	15	32
	F	16	0	0	0	0	0	7	23
	Subtotal¹	31	0	0	2	0	0	22	55
Unknown	M	0	0	0	0	0	0	1	1
	F	0	0	0	0	0	0	2	2
	Subtotal¹	0	0	0	0	0	0	3	3
ALL AGES	M	158	5	5	18	5	5	134	330
	F	111	0	0	4	0	1	67	183
	TOTAL¹	269	5	5	22	5	6	201	513

¹ Unknown sex included

**Table 35c: Driver and Motorcycle Rider Casualties by Age, Sex, BAC
Minor Injury**

Age	Sex	Blood Alcohol Concentration						Not Tested/ Unknown	ALL CAUSALITIES
		Negative	0.001- 0.049	0.050- 0.079	0.080- 0.149	0.150- 0.199	.200+		
0-15	M	0	0	0	1	0	0	0	1
	F	0	0	0	0	0	0	0	0
	Subtotal¹	0	0	0	1	0	0	0	1
16-19	M	85	0	1	4	6	1	87	184
	F	96	0	1	0	2	0	94	193
	Subtotal¹	182	0	2	4	8	1	181	378
20-24	M	100	4	1	5	4	4	127	245
	F	117	0	1	1	1	2	191	313
	Subtotal¹	217	4	2	6	5	6	318	558
25-29	M	70	0	1	5	5	3	122	206
	F	96	0	0	3	2	2	202	305
	Subtotal¹	166	0	1	8	7	5	324	511
30-39	M	121	1	3	10	7	8	208	358
	F	150	0	1	6	1	2	283	443
	Subtotal¹	271	1	4	16	8	10	491	801
40-49	M	106	1	1	3	5	3	216	335
	F	119	1	0	0	2	3	273	398
	Subtotal¹	225	2	1	3	7	6	489	733
50-59	M	96	0	1	5	1	2	180	285
	F	108	1	0	2	0	3	191	305
	Subtotal¹	204	1	1	7	1	5	371	590
60-69	M	59	2	1	0	1	1	92	156
	F	68	0	0	0	0	0	106	174
	Subtotal¹	127	2	1	0	1	1	198	330
70+	M	85	4	1	1	0	2	90	183
	F	64	0	0	0	0	0	70	134
	Subtotal¹	149	4	1	1	0	2	160	317
Unknown	M	2	0	0	0	0	0	5	7
	F	1	0	0	0	0	0	1	2
	Subtotal¹	3	0	0	0	0	0	7	10
ALL AGES	M	724	12	10	34	29	24	1127	1960
	F	819	2	3	12	8	12	1411	2267
	TOTAL¹	1544	14	13	46	37	36	2539	4229

¹ Unknown sex included

Table 36a: Driver and Motorcycle Rider Casualties by Age, Sex, Drug Fatal

Age	Sex	Drugs					Combination of drugs ¹	Not Tested/ Unknown	ALL CASUALTIES
		Negative	THC	MDMA	Meth				
0-15	M	0	0	0	0	0	0	0	0
	F	0	0	0	0	0	0	0	0
	Subtotal²	0	0	0	0	0	0	0	0
16-19	M	0	0	0	0	0	0	0	0
	F	1	0	0	0	0	0	0	1
	Subtotal²	1	0	0	0	0	0	0	1
20-24	M	8	0	0	0	0	0	0	8
	F	1	0	0	0	0	0	0	1
	Subtotal²	9	0	0	0	0	0	0	9
25-29	M	1	1	0	0	2	0	0	4
	F	0	0	0	0	0	0	0	0
	Subtotal²	1	1	0	0	2	0	0	4
30-39	M	2	1	0	0	0	1	0	4
	F	0	0	0	0	0	0	0	0
	Subtotal²	2	1	0	0	0	1	0	4
40-49	M	9	1	0	1	0	0	0	11
	F	2	0	0	0	0	0	0	2
	Subtotal²	11	1	0	1	0	0	0	13
50-59	M	3	3	0	0	0	0	0	6
	F	2	1	0	0	0	0	0	3
	Subtotal²	5	4	0	0	0	0	0	9
60-69	M	5	0	0	0	0	1	0	6
	F	1	0	0	0	0	0	0	1
	Subtotal²	6	0	0	0	0	1	0	7
70+	M	9	0	0	0	0	1	0	10
	F	1	0	0	0	0	2	0	3
	Subtotal²	10	0	0	0	0	3	0	13
Unknown	M	0	0	0	0	0	0	0	0
	F	0	0	0	0	0	0	0	0
	Subtotal²	0	0	0	0	0	0	0	0
ALL AGES	M	37	6	0	1	2	3	0	49
	F	8	1	0	0	0	2	0	11
	TOTAL²	45	7	0	1	2	5	0	60

¹ Two or more of THC, MDMA or Meth

² Unknown sex included

Table 36b: Driver and Motorcycle Rider Casualties by Age, Sex, Drug Serious Injury

Age	Sex	Drugs					Combination of drugs ¹	Not Tested/ Unknown	ALL CASUALTIES
		Negative	THC	MDMA	Meth				
0-15	M	0	0	0	0	0	1	1	
	F	0	0	0	0	0	0	0	
	Subtotal²	0	0	0	0	0	1	1	
16-19	M	12	0	0	0	0	11	23	
	F	8	0	0	0	0	3	11	
	Subtotal²	20	0	0	0	0	14	34	
20-24	M	17	5	2	0	0	21	45	
	F	4	0	0	0	0	13	17	
	Subtotal²	21	5	2	0	0	34	62	
25-29	M	14	3	0	3	1	19	40	
	F	8	2	1	1	0	7	19	
	Subtotal²	22	5	1	4	1	26	59	
30-39	M	17	2	0	3	2	23	47	
	F	15	2	0	2	0	15	34	
	Subtotal²	32	4	0	5	2	38	81	
40-49	M	25	2	0	7	0	23	57	
	F	16	0	0	1	0	10	27	
	Subtotal²	41	2	0	8	0	33	84	
50-59	M	23	4	0	1	0	23	51	
	F	19	0	0	0	0	11	30	
	Subtotal²	42	4	0	1	0	34	81	
60-69	M	21	0	0	0	0	12	33	
	F	12	0	0	0	0	8	20	
	Subtotal²	33	0	0	0	0	20	53	
70+	M	15	1	0	0	0	16	32	
	F	15	0	0	0	0	8	23	
	Subtotal²	30	1	0	0	0	24	55	
Unknown	M	0	0	0	0	0	1	1	
	F	0	0	0	0	0	2	2	
	Subtotal²	0	0	0	0	0	3	3	
ALL AGES	M	144	17	2	14	3	150	330	
	F	97	4	1	4	0	77	183	
	TOTAL²	241	21	3	18	3	227	513	

¹ Two or more of THC, MDMA or Meth

² Unknown sex included

**Table 36c: Driver and Motorcycle Rider Casualties by Age, Sex, Drug
Minor Injury**

Age	Sex	Drugs					Combination of drugs ¹	Not Tested/ Unknown	ALL CASUALTIES
		Negative	THC	MDMA	Meth				
0-15	M	0	0	0	0	0	1	1	
	F	0	0	0	0	0	0	0	
	Subtotal²	0	0	0	0	0	1	1	
16-19	M	90	2	1	0	1	90	184	
	F	89	2	0	1	0	101	193	
	Subtotal²	179	4	2	1	1	191	378	
20-24	M	99	7	0	0	0	139	245	
	F	105	8	2	2	1	195	313	
	Subtotal²	204	15	2	2	1	334	558	
25-29	M	66	10	0	5	3	122	206	
	F	90	4	0	3	2	206	305	
	Subtotal²	156	14	0	8	5	328	511	
30-39	M	121	9	0	9	3	216	358	
	F	142	4	0	3	1	293	443	
	Subtotal²	263	13	0	12	4	509	801	
40-49	M	101	7	0	5	0	222	335	
	F	103	3	0	4	1	287	398	
	Subtotal²	204	10	0	9	1	509	733	
50-59	M	98	1	0	1	1	184	285	
	F	107	2	0	0	0	196	305	
	Subtotal²	205	3	0	1	1	380	590	
60-69	M	62	0	0	0	0	94	156	
	F	68	0	0	0	0	106	174	
	Subtotal²	130	0	0	0	0	200	330	
70+	M	85	0	0	0	0	98	183	
	F	62	0	0	0	0	72	134	
	Subtotal²	147	0	0	0	0	170	317	
Unknown	M	0	0	0	0	0	7	7	
	F	0	0	0	0	0	2	2	
	Subtotal²	0	0	0	0	0	10	10	
ALL AGES	M	722	36	1	20	8	1173	1960	
	F	766	23	2	13	5	1458	2267	
	TOTAL²	1488	59	4	33	13	2632	4229	

¹ Two or more of THC, MDMA or Meth

² Unknown sex included

**Table 37a: Road User Involved In & Responsible For Crashes by Age & Sex
Fatal Crash**

Age	Sex	Drivers		Motorcycle Riders		Bicycle Riders		Pedestrians		Other Road Users		ALL ROAD USERS	
		Involved	Responsible	Involved	Responsible	Involved	Responsible	Involved	Responsible	Involved	Responsible	Involved	Responsible
0-15	M	0	0	0	0	0	0	1	1	0	0	1	1
	F	0	0	0	0	0	0	1	1	0	0	1	1
	Subtotal¹	0	0	0	0	0	0	2	2	0	0	2	2
16-19	M	3	1	0	0	0	0	0	0	0	0	3	1
	F	4	3	0	0	0	0	0	0	0	0	4	3
	Subtotal¹	7	4	0	0	0	0	0	0	0	0	7	4
20-24	M	12	9	1	0	0	0	2	1	0	0	15	10
	F	1	1	0	0	0	0	0	0	0	0	1	1
	Subtotal¹	13	10	1	0	0	0	2	1	0	0	16	11
25-29	M	5	4	2	1	0	0	1	0	0	0	8	5
	F	1	0	0	0	0	0	1	0	0	0	2	0
	Subtotal¹	6	4	2	1	0	0	2	0	0	0	10	5
30-39	M	9	4	2	2	1	1	0	0	0	0	12	7
	F	5	5	0	0	0	0	0	0	0	0	5	5
	Subtotal¹	14	9	2	2	1	1	0	0	0	0	17	12
40-49	M	15	11	2	2	1	0	2	1	0	0	20	14
	F	5	2	0	0	1	0	3	2	0	0	9	4
	Subtotal¹	20	13	2	2	2	0	5	3	0	0	29	18
50-59	M	16	5	1	1	0	0	0	0	0	0	17	6
	F	6	3	0	0	0	0	0	0	0	0	6	3
	Subtotal¹	22	8	1	1	0	0	0	0	0	0	23	9
60-69	M	10	5	2	1	1	1	0	0	0	0	13	7
	F	4	3	0	0	0	0	2	0	0	0	6	3
	Subtotal¹	14	8	2	1	1	1	2	0	0	0	19	10
70+	M	15	10	2	2	1	1	5	2	0	0	23	15
	F	3	3	0	0	0	0	3	0	0	0	6	3
	Subtotal¹	18	13	2	2	1	1	8	2	0	0	29	18
Unknown	M	0	0	0	0	0	0	0	0	0	0	0	0
	F	0	0	0	0	0	0	1	0	0	0	1	0
	Subtotal¹	1	0	0	0	0	0	1	0	0	0	2	0
ALL AGES	M	85	49	12	9	4	3	11	5	0	0	112	66
	F	29	20	0	0	1	0	11	3	0	0	41	23
	TOTAL¹	115	69	12	9	5	3	22	8	0	0	154	89

¹Unknown sex included

**Table 37b: Road User Involved In & Responsible For Crashes by Age & Sex
Serious Injury Crash**

Age	Sex	Drivers		Motorcycle Riders		Bicycle Riders		Pedestrians		Other Road Users		ALL ROAD USERS	
		Involved	Responsible	Involved	Responsible	Involved	Responsible	Involved	Responsible	Involved	Responsible	Involved	Responsible
0-15	M	1	1	1	1	5	5	14	12	0	0	21	19
	F	0	0	0	0	0	0	3	3	0	0	3	3
	Subtotal¹	1	1	1	1	5	5	17	15	0	0	24	22
16-19	M	31	24	5	4	3	2	2	2	0	0	41	32
	F	20	13	0	0	0	0	1	0	0	0	21	13
	Subtotal¹	51	37	5	4	3	2	3	2	0	0	62	45
20-24	M	67	41	15	13	5	2	4	4	0	0	91	60
	F	39	24	1	0	1	0	3	3	0	0	44	27
	Subtotal¹	106	65	16	13	6	2	7	7	0	0	135	87
25-29	M	54	39	12	8	2	1	6	5	0	0	74	53
	F	35	18	1	1	0	0	1	1	0	0	37	20
	Subtotal¹	89	57	13	9	2	1	7	6	0	0	111	73
30-39	M	65	41	20	13	7	2	4	4	0	0	96	60
	F	46	24	4	2	2	1	5	2	0	0	57	29
	Subtotal¹	111	65	24	15	9	3	9	6	0	0	153	89
40-49	M	83	49	25	22	11	7	6	5	0	0	125	83
	F	49	28	2	1	4	1	6	1	0	0	61	31
	Subtotal¹	132	77	27	23	15	8	12	6	0	0	186	114
50-59	M	66	33	26	13	12	4	8	5	1	0	113	55
	F	55	30	3	3	4	1	1	0	0	0	63	34
	Subtotal¹	121	63	29	16	16	5	9	5	1	0	176	89
60-69	M	48	24	11	8	3	2	5	2	0	0	67	36
	F	23	17	1	1	0	0	3	1	0	0	27	19
	Subtotal¹	71	41	12	9	3	2	8	3	0	0	94	55
70+	M	51	36	3	2	4	3	7	3	0	0	65	44
	F	27	20	1	0	0	0	6	2	0	0	34	22
	Subtotal¹	78	56	4	2	4	3	13	5	0	0	99	66
Unknown	M	5	4	1	1	3	2	4	1	0	0	13	8
	F	3	2	0	0	0	0	3	1	0	0	6	3
	Subtotal¹	18	9	1	1	3	2	7	2	0	0	29	14
ALL AGES	M	471	292	119	85	55	30	60	43	1	0	706	450
	F	297	176	13	8	11	3	32	14	0	0	353	201
	TOTAL¹	778	471	132	93	66	33	92	57	1	0	1069	654

¹ Unknown sex included

**Table 37c: Road User Involved In & Responsible For Crashes by Age & Sex
Minor Injury Crash**

Age	Sex	Drivers		Motorcycle Riders		Bicycle Riders		Pedestrians		Other Road Users		ALL ROAD USERS	
		Involved	Responsible	Involved	Responsible	Involved	Responsible	Involved	Responsible	Involved	Responsible	Involved	Responsible
0-15	M	1	1	0	0	17	9	14	11	0	1	32	22
	F	0	0	0	0	6	2	9	5	0	0	15	7
	Subtotal¹	1	1	0	0	23	11	23	16	0	1	47	29
16-19	M	356	243	27	17	25	9	10	5	0	0	418	274
	F	314	207	4	1	9	3	7	5	0	0	334	216
	Subtotal¹	671	451	31	18	34	12	17	10	0	0	753	491
20-24	M	538	334	60	29	28	2	9	5	0	0	635	370
	F	543	287	11	6	14	3	13	6	0	0	581	302
	Subtotal¹	1081	621	71	35	42	5	22	11	0	0	1216	672
25-29	M	492	285	35	23	40	6	10	7	0	0	577	321
	F	473	209	12	7	14	3	8	3	0	0	507	222
	Subtotal¹	965	494	47	30	54	9	18	10	0	0	1084	543
30-39	M	876	453	54	33	90	20	9	6	0	0	1029	512
	F	772	347	7	2	19	2	12	4	0	0	810	355
	Subtotal¹	1648	800	61	35	109	22	21	10	0	0	1839	867
40-49	M	810	399	53	31	77	19	14	6	0	0	954	455
	F	692	271	12	5	24	6	11	6	0	0	739	288
	Subtotal¹	1502	670	65	36	101	25	25	12	0	0	1693	743
50-59	M	600	266	62	38	62	17	12	2	1	0	737	323
	F	514	200	7	5	21	7	9	4	0	0	551	216
	Subtotal¹	1114	466	69	43	83	24	21	6	1	0	1288	539
60-69	M	418	213	26	14	15	5	14	6	0	0	473	238
	F	310	136	1	1	8	4	12	2	0	0	331	143
	Subtotal¹	728	349	27	15	23	9	26	8	0	0	804	381
70+	M	377	235	7	4	12	5	24	9	0	0	420	253
	F	216	152	0	0	2	0	17	5	0	0	235	157
	Subtotal¹	593	387	7	4	14	5	41	14	0	0	655	410
Unknown	M	154	123	2	1	12	5	5	3	0	0	173	132
	F	74	52	0	0	4	1	7	4	0	0	85	57
	Subtotal¹	334	244	5	4	17	6	13	7	0	0	369	261
ALL AGES	M	4622	2552	326	190	378	97	121	60	1	1	5448	2900
	F	3908	1861	54	27	121	31	105	44	0	0	4188	1963
	TOTAL¹	8637	4483	383	220	500	128	227	104	1	1	9748	4936

¹Unknown sex included

Table 37d: Road User Involved In & Responsible For Crashes by Age & Sex
Property Damage Crash

Age	Sex	Drivers		Motorcycle Riders		Bicycle Riders		Pedestrians		Other Road Users		ALL ROAD USERS	
		Involved	Responsible	Involved	Responsible	Involved	Responsible	Involved	Responsible	Involved	Responsible	Involved	Responsible
0-15	M	4	3	0	0	13	6	0	0	0	0	17	9
	F	1	1	1	1	2	0	0	0	0	0	4	2
	Subtotal¹	5	4	1	1	15	6	0	0	0	0	21	11
16-19	M	965	664	25	13	16	2	0	0	0	0	1006	679
	F	607	391	2	2	1	0	0	0	1	1	611	394
	Subtotal¹	1572	1055	27	15	17	2	0	0	1	1	1617	1073
20-24	M	1525	956	60	31	34	4	0	0	0	0	1619	991
	F	1097	625	2	0	9	2	0	0	0	0	1108	627
	Subtotal¹	2623	1582	63	32	43	6	0	0	0	0	2729	1620
25-29	M	1354	759	36	18	36	4	1	1	0	0	1427	782
	F	800	418	5	1	3	1	0	0	0	0	808	420
	Subtotal¹	2155	1178	42	20	39	5	1	1	0	0	2237	1204
30-39	M	2147	1104	49	25	58	11	2	0	2	0	2258	1140
	F	1308	631	5	2	12	1	0	0	1	0	1326	634
	Subtotal¹	3455	1735	54	27	70	12	2	0	3	0	3584	1774
40-49	M	1804	852	53	23	55	15	0	0	2	0	1914	890
	F	1251	520	7	4	9	0	2	1	0	0	1269	525
	Subtotal¹	3056	1373	60	27	64	15	2	1	2	0	3184	1416
50-59	M	1508	655	54	23	35	8	0	0	1	0	1598	686
	F	938	404	1	0	3	0	2	1	1	0	945	405
	Subtotal¹	2446	1059	55	23	38	8	2	1	2	0	2543	1091
60-69	M	1014	461	18	12	8	1	0	0	0	0	1040	474
	F	634	296	0	0	4	1	1	0	0	0	639	297
	Subtotal¹	1649	758	18	12	12	2	1	0	0	0	1680	772
70+	M	696	425	4	1	5	3	2	1	0	0	707	430
	F	399	263	0	0	0	0	1	0	0	0	400	263
	Subtotal¹	1095	688	4	1	5	3	3	1	0	0	1107	693
Unknown	M	455	294	32	21	85	32	4	3	0	0	576	350
	F	174	111	0	0	20	8	1	1	0	0	195	120
	Subtotal¹	1064	766	60	48	119	43	6	5	0	0	1249	862
ALL AGES	M	11472	6173	331	167	345	86	9	5	5	0	12162	6431
	F	7209	3660	23	10	63	13	7	3	3	1	7305	3687
	TOTAL¹	19120	10198	384	206	422	102	17	9	8	1	19951	10516

¹Unknown sex included

Table 37e: Road User Involved In & Responsible For Crashes by Age & Sex
All crashes

Age	Sex	Drivers		Motorcycle Riders		Bicycle Riders		Pedestrians		Other Road Users		ALL ROAD USERS	
		Involved	Responsible	Involved	Responsible	Involved	Responsible	Involved	Responsible	Involved	Responsible	Involved	Responsible
0-15	M	6	5	1	1	35	20	29	24	0	1	71	51
	F	1	1	1	1	8	2	13	9	0	0	23	13
	Subtotal¹	7	6	2	2	43	22	42	33	0	1	94	64
16-19	M	1355	932	57	34	44	13	12	7	0	0	1468	986
	F	945	614	6	3	10	3	8	5	1	1	970	626
	Subtotal¹	2301	1547	63	37	54	16	20	12	1	1	2439	1613
20-24	M	2142	1340	136	73	67	8	15	10	0	0	2360	1431
	F	1680	937	14	6	24	5	16	9	0	0	1734	957
	Subtotal¹	3823	2278	151	80	91	13	31	19	0	0	4096	2390
25-29	M	1905	1087	85	50	78	11	18	13	0	0	2086	1161
	F	1309	645	18	9	17	4	10	4	0	0	1354	662
	Subtotal¹	3215	1733	104	60	95	15	28	17	0	0	3442	1825
30-39	M	3097	1602	125	73	156	34	15	10	2	0	3395	1719
	F	2131	1007	16	6	33	4	17	6	1	0	2198	1023
	Subtotal¹	5228	2609	141	79	189	38	32	16	3	0	5593	2742
40-49	M	2712	1311	133	78	144	41	22	12	2	0	3013	1442
	F	1997	821	21	10	38	7	22	10	0	0	2078	848
	Subtotal¹	4710	2133	154	88	182	48	44	22	2	0	5092	2291
50-59	M	2190	959	143	75	109	29	20	7	3	0	2465	1070
	F	1513	637	11	8	28	8	12	5	1	0	1565	658
	Subtotal¹	3703	1596	154	83	137	37	32	12	4	0	4030	1728
60-69	M	1490	703	57	35	27	9	19	8	0	0	1593	755
	F	971	452	2	2	12	5	18	3	0	0	1003	462
	Subtotal¹	2462	1156	59	37	39	14	37	11	0	0	2597	1218
70+	M	1139	706	16	9	22	12	38	15	0	0	1215	742
	F	645	438	1	0	2	0	27	7	0	0	675	445
	Subtotal¹	1784	1144	17	9	24	12	65	22	0	0	1890	1187
Unknown	M	614	421	35	23	100	39	13	7	0	0	762	490
	F	251	165	0	0	24	9	12	6	0	0	287	180
	Subtotal¹	1417	1019	66	53	139	51	27	14	0	0	1649	1137
ALL AGES	M	16650	9066	788	451	782	216	201	113	7	1	18428	9847
	F	11443	5717	90	45	196	47	155	64	3	1	11887	5874
	TOTAL¹	28650	15221	911	528	993	266	358	178	10	2	30922	16195

¹Unknown sex included

Table 38: Drivers & Motorcycle Riders Involved in & Responsible for Crashes by Licence Type & Severity

Licence Type	Fatal Crashes		Serious Injury Crashes		Minor Injury Crashes		Property Damage Crashes		ALL CRASHES	
	Involved	Responsible	Involved	Responsible	Involved	Responsible	Involved	Responsible	Involved	Responsible
Learners Permit	1	1	19	17	100	55	180	110	300	183
Probationary Licence	0	0	8	4	44	26	95	65	147	95
Full Licence	106	64	672	405	6989	3351	14552	7054	22319	10874
Unlicensed	6	6	28	22	140	100	302	222	476	350
Conditional Licence	0	0	0	0	5	2	10	4	15	6
Provisional 1 Licence	6	2	81	51	850	559	1979	1341	2916	1953
Provisional 2 Licence	1	1	16	12	223	137	462	285	702	435
Disqualified Licence	2	1	11	10	33	30	60	51	106	92
Unknown	5	3	75	43	636	443	1864	1272	2580	1761
Total	127	78	910	564	9020	4703	19504	10404	29561	15749

**Table 39a: Drivers & Motorcycle Riders Responsible for Crashes by Licence Type and Age
Fatal Crash**

	Learners Permit	Probationary Licence	Full Licence	Unlicensed	Conditional Licence	P1 Licence	P2 Licence	Disqualified	Unknown	Total
0-15	0	0	0	0	0	0	0	0	0	0
16-19	0	0	1	1	0	1	1	0	0	4
20-24	0	0	9	0	0	0	0	0	1	10
25-29	0	0	2	2	0	0	0	1	0	5
30-39	0	0	8	2	0	1	0	0	0	11
40-49	1	0	12	1	0	0	0	0	1	15
50-59	0	0	9	0	0	0	0	0	0	9
60-69	0	0	8	0	0	0	0	0	1	9
70+	0	0	15	0	0	0	0	0	0	15
unknown	0	0	0	0	0	0	0	0	0	0
Total	1	0	64	6	0	2	1	1	3	78

**Table 39b: Drivers & Motorcycle Riders Responsible for Crashes by Licence Type and Age
Serious Injury Crash**

	Learners Permit	Probationary Licence	Full Licence	Unlicensed	Conditional Licence	P1 Licence	P2 Licence	Disqualified	Unknown	Total
0-15	0	0	0	2	0	0	0	0	0	2
16-19	11	0	1	2	0	21	6	0	0	41
20-24	3	0	41	5	0	15	6	1	7	78
25-29	1	0	41	7	0	10	0	2	5	66
30-39	1	2	59	1	0	5	0	3	9	80
40-49	1	1	88	3	0	0	0	3	4	100
50-59	0	1	71	2	0	0	0	1	4	79
60-69	0	0	48	0	0	0	0	0	2	50
70+	0	0	55	0	0	0	0	0	3	58
unknown	0	0	1	0	0	0	0	0	9	10
Total	17	4	405	22	0	51	12	10	43	564

**Table 39c: Drivers & Motorcycle Riders Responsible for Crashes by Licence Type and Age
Minor Injury Crash**

	Learners Permit	Probationary Licence	Full Licence	Unlicensed	Conditional Licence	P1 Licence	P2 Licence	Disqualified	Unknown	Total
0-15	0	0	0	1	0	0	0	0	0	1
16-19	26	2	50	8	0	300	75	1	7	469
20-24	10	3	377	17	0	154	37	6	52	656
25-29	6	5	376	22	0	54	11	10	40	524
30-39	6	5	696	31	1	31	12	8	45	835
40-49	3	8	635	12	1	17	1	2	27	706
50-59	1	2	484	4	0	0	1	3	14	509
60-69	3	1	350	0	0	1	0	0	9	364
70+	0	0	382	3	0	2	0	0	4	391
unknown	0	0	1	2	0	0	0	0	245	248
Total	55	26	3351	100	2	559	137	30	443	4703

**Table 39d: Drivers & Motorcycle Riders Responsible for Crashes by Licence Type and Age
Property Damage Crash**

	Learners Permit	Probationary Licence	Full Licence	Unlicensed	Conditional Licence	P1 Licence	P2 Licence	Disqualified	Unknown	Total
0-15	0	0	0	5	0	0	0	0	0	5
16-19	48	2	118	13	0	694	161	3	31	1070
20-24	17	7	922	51	1	389	92	9	126	1614
25-29	18	13	859	52	0	149	20	14	73	1198
30-39	14	14	1484	58	2	73	7	16	94	1762
40-49	8	16	1271	24	1	23	4	7	46	1400
50-59	2	8	998	11	0	12	1	2	48	1082
60-69	3	3	732	6	0	1	0	0	25	770
70+	0	2	669	2	0	0	0	0	16	689
unknown	0	0	1	0	0	0	0	0	813	814
Total	110	65	7054	222	4	1341	285	51	1272	10404

**Table 39e: Drivers & Motorcycle Riders Responsible for Crashes by Licence Type and Age
All crashes**

	Learners Permit	Probationary Licence	Full Licence	Unlicensed	Conditional Licence	P1 Licence	P2 Licence	Disqualified	Unknown	Total
0-15	0	0	0	8	0	0	0	0	0	8
16-19	85	4	170	24	0	1016	243	4	38	1584
20-24	30	10	1349	73	1	558	135	16	186	2358
25-29	25	18	1278	83	0	213	31	27	118	1793
30-39	21	21	2247	92	3	110	19	27	148	2688
40-49	13	25	2006	40	2	40	5	12	78	2221
50-59	3	11	1562	17	0	12	2	6	66	1679
60-69	6	4	1138	6	0	2	0	0	37	1193
70+	0	2	1121	5	0	2	0	0	23	1153
unknown	0	0	3	2	0	0	0	0	1067	1072
Total	183	95	10874	350	6	1953	435	92	1761	15749

Reference Information

Population

Licence

Vehicle Information

Table 40: Estimated Population¹ by Age and Sex

Age Group	Sex		ALL PERSONS
	Male	Female	
0-15	161 502	153 844	315 346
16-19	43 285	41 114	84 399
20-24	59 119	56 123	115 242
25-29	58 689	56 629	115 318
30-39	105 886	104 531	210 417
40-49	114 226	114 638	228 864
50-59	110 031	113 320	223 351
60-69	90 519	9 4750	185 269
70+	84 694	107 934	192 628
TOTAL	827 951	842 883	1 670 834

Table 41: Licence and Permit Holders² by Age and Sex

Age Group	Sex			ALL PERSONS
	Male	Female	Unknown	
16-19	33 392	31 954	15	65 361
20-24	47 885	46 009	112	94 006
25-29	50 952	48 541	202	99 695
30-39	99 905	95 431	685	196 021
40-49	110 905	107 309	539	218 753
50-59	108 033	103 706	442	212 181
60-69	89 528	83 256	272	173 056
70+	70 220	56 264	82	126 566
TOTAL	610 820	572 470	2349³	1 185 641

¹ Population as of 30 June. Source: Australian Bureau of Statistics, *Australian Demographic Statistics*, cat.no. 3101.0

² At 30 June. Source: TRUMPS database, Registration & Licensing Section, DPTI

³ Includes 2 licence holders with unknown age

Table 42: Motor Vehicle on Register¹ by Vehicle Type

Type of Vehicle	ALL VEHICLES
Cars & Station Wagons	1 004 311
Utilities	139 193
Panel Vans	35 403
Rigid & Other Trucks	42 659
Articulated Trucks	7 847
Other Commercials ²	12 821
Buses	4,164
Motorcycles	43 550
Other ³	15 513
TOTAL	1 305 461

Table 43: Vehicle Kilometres Travelled⁴ (VKT) by Vehicle Type

Type of Vehicle	TOTAL VKT ('000 000)
Passenger Vehicle	12 203
Light Commercials	2 564
Rigid Trucks	595
Articulated Trucks	630
Non-freight Carrying Trucks	13
Motorcycles	163
Buses	145
TOTAL	16 313

¹ At 30 June. Excludes tractors, trailers, caravans, plant and equipment. Source: TRUMPS database, Registration & Licensing Section, DPTI

² Includes animal transporter vehicle, drilling rig vehicle, earth moving vehicle, garbage truck, industrial vehicle, mobile crane vehicle, tanker vehicle

³ Includes ambulance, armoured vehicle, fork lift, land implement vehicle, quad cycle, tricycle, golf buggy

⁴ Travel for the year ended 30 June 2012. Source: Australian Bureau of Statistics, *Survey of Motor Vehicle Use*, cat. no. 9208.0

