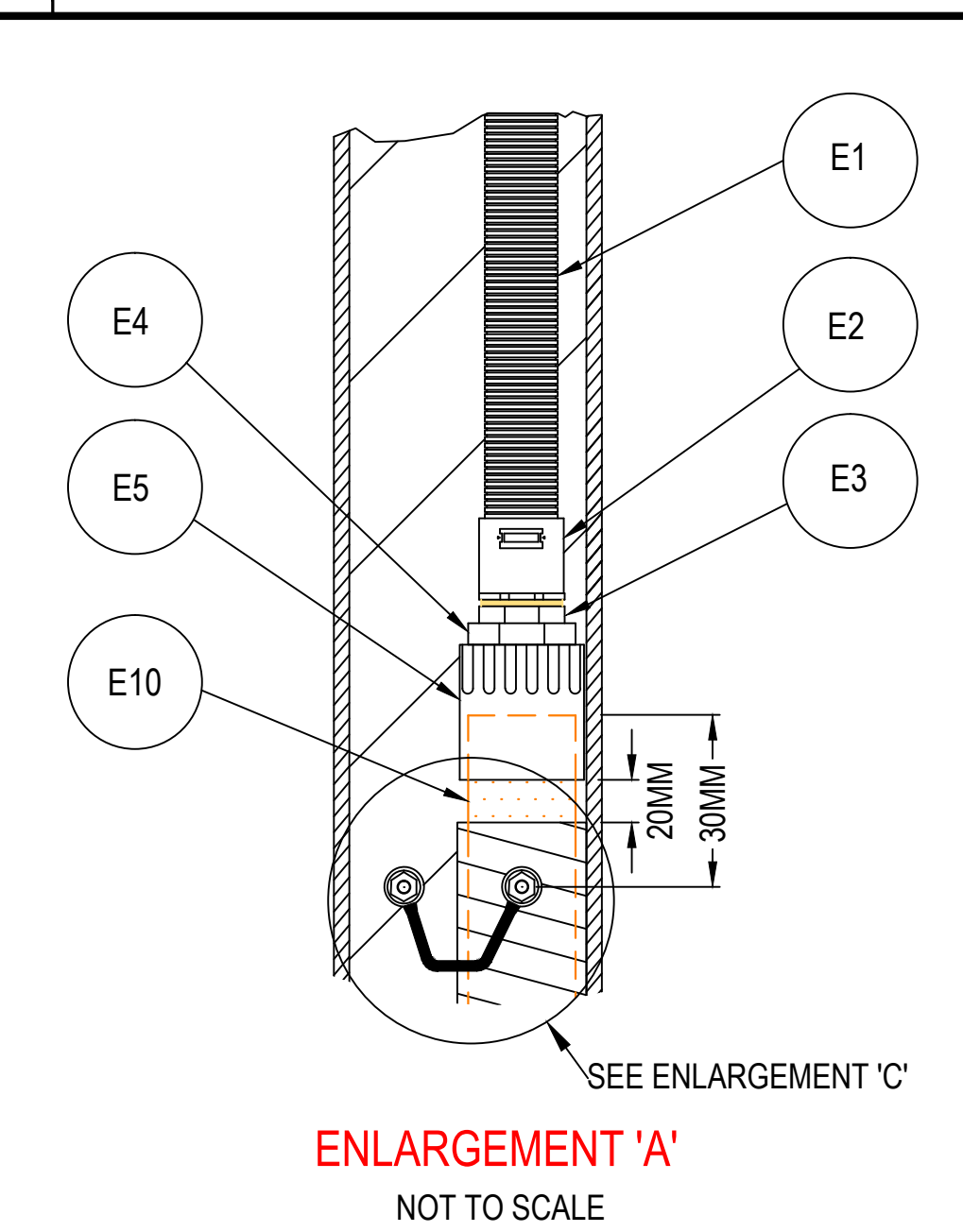
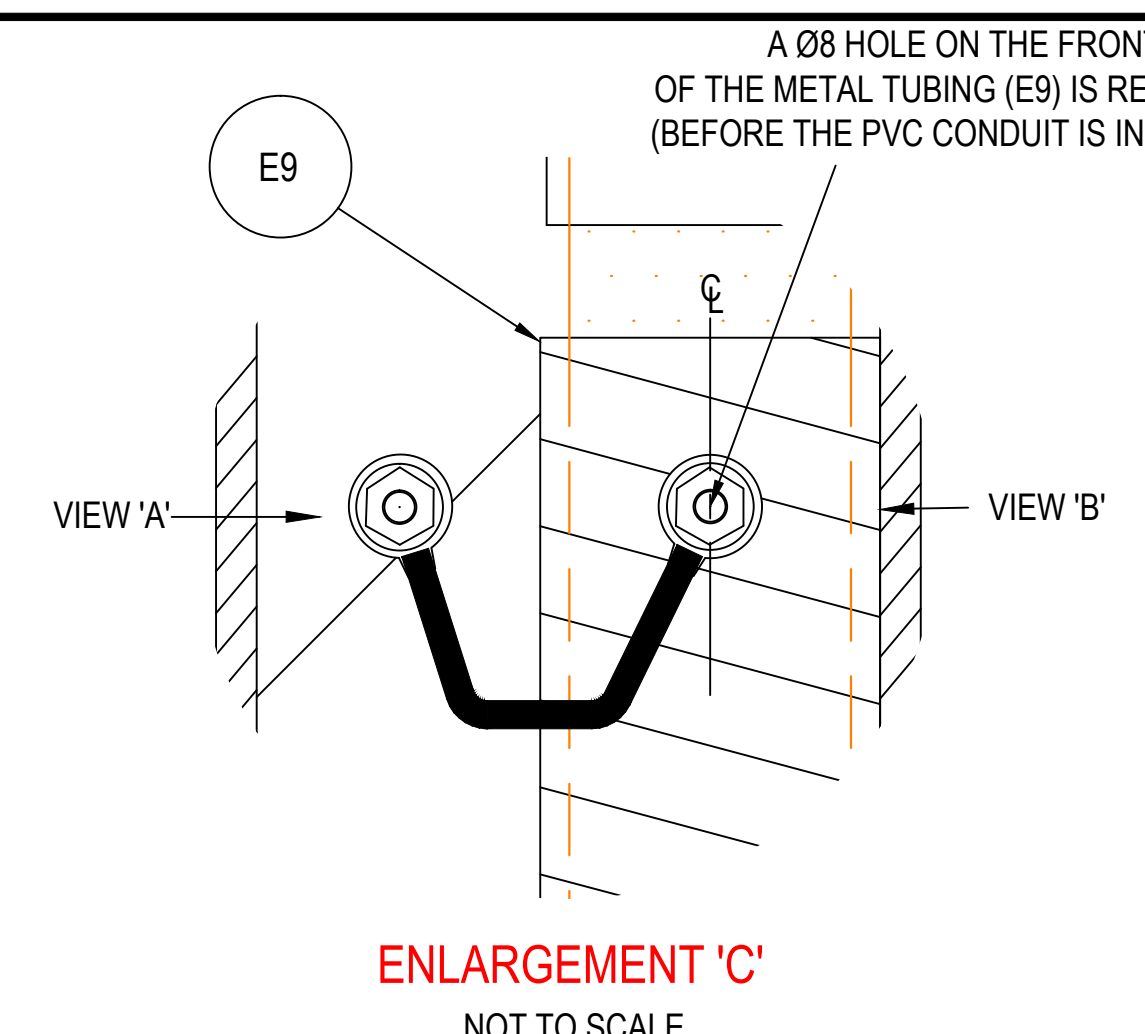


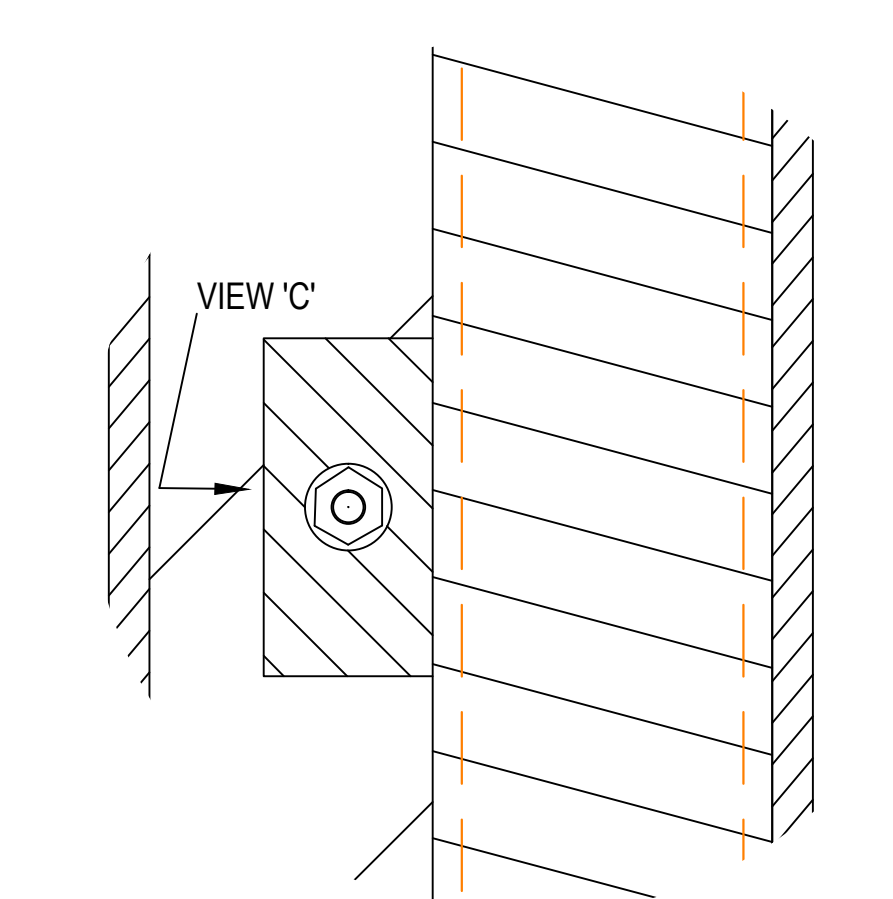
STOBIE POLE WITH PIPEWORK DETAILS
SIDE VIEW LOOKING INTO STEEL CHANNEL
NOT TO SCALE



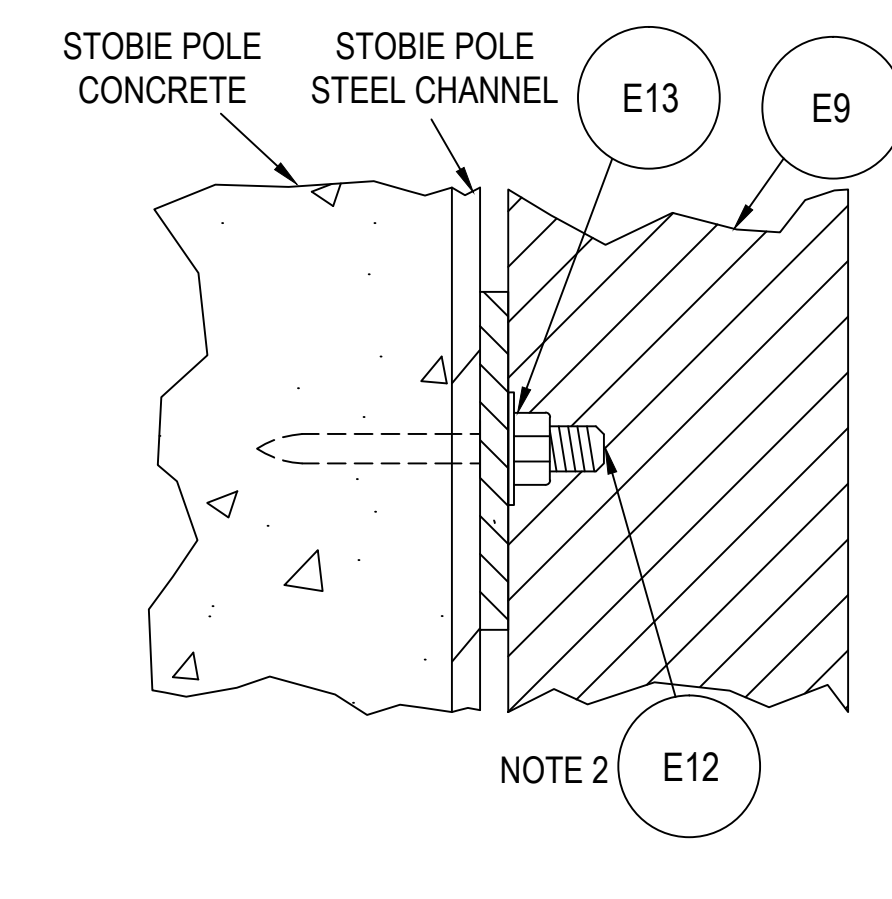
ENLARGEMENT 'A'
NOT TO SCALE



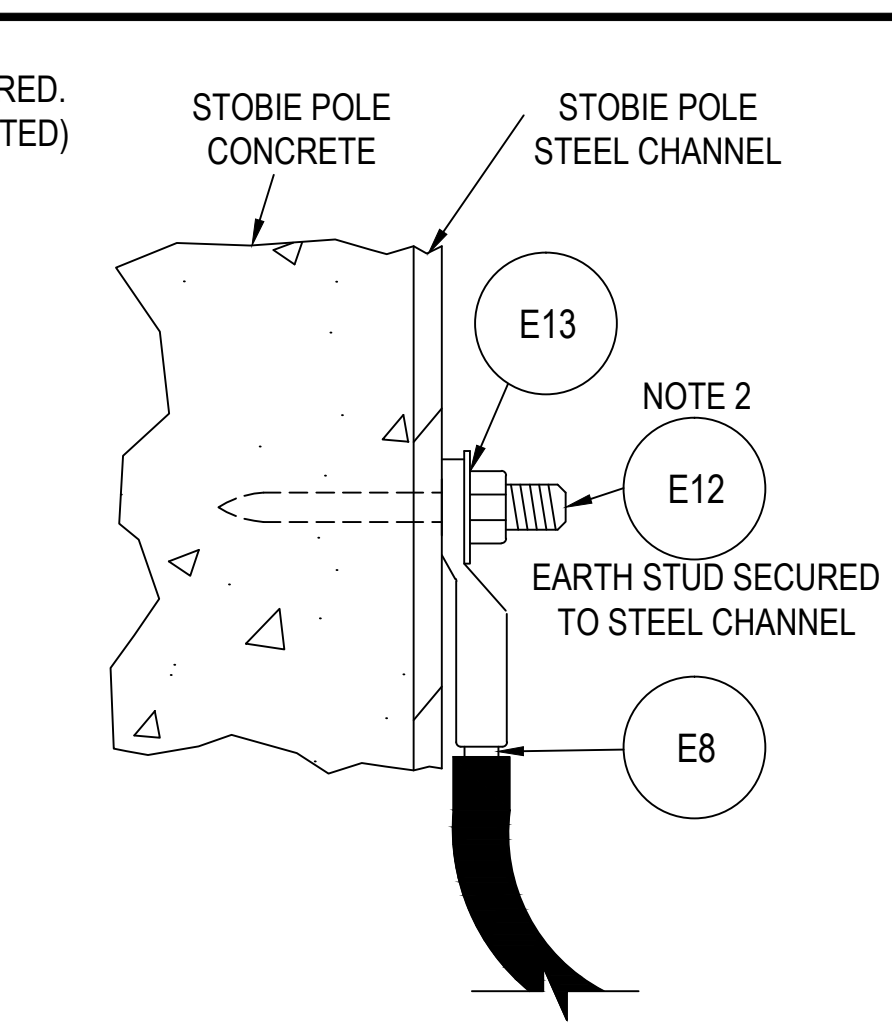
ENLARGEMENT 'C'
NOT TO SCALE



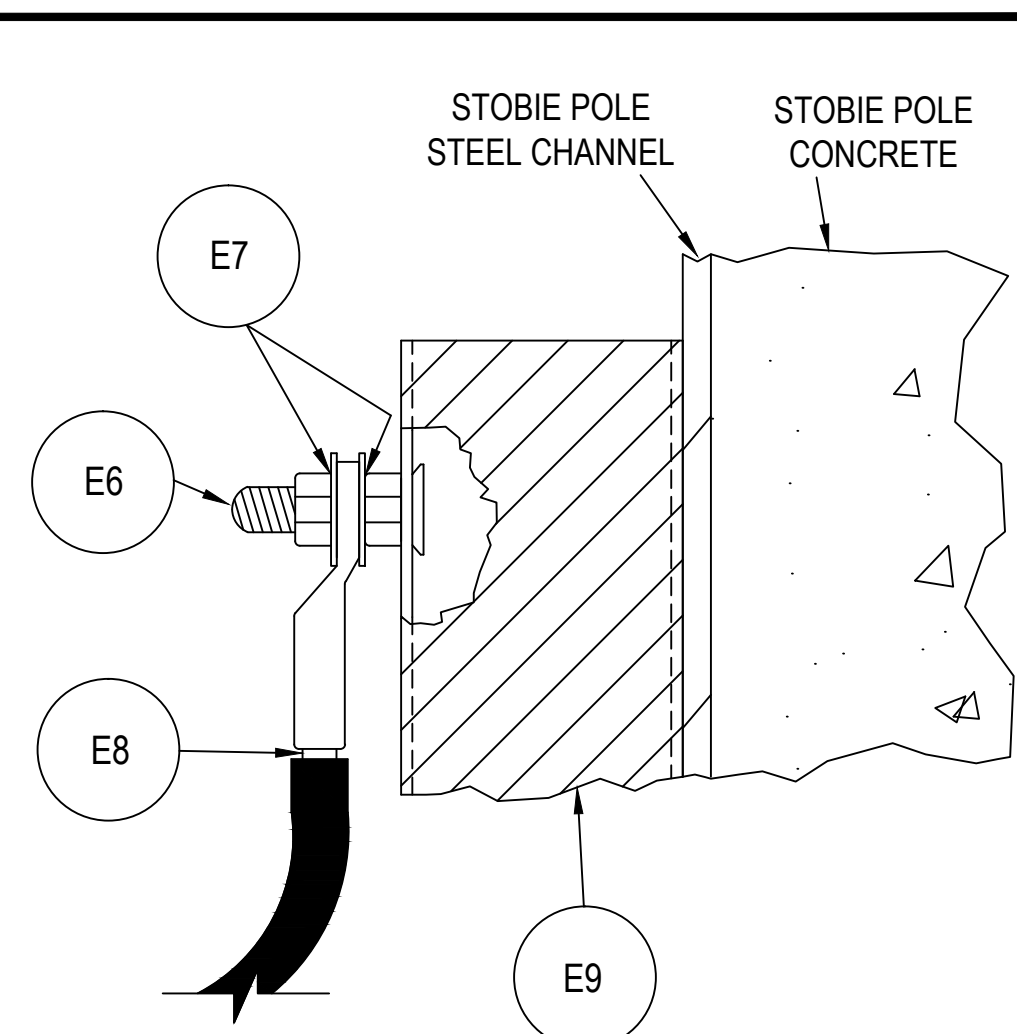
ENLARGEMENT 'B'
NOT TO SCALE
ALSO SEE REAR VIEW OF ENLARGEMENT 'B'



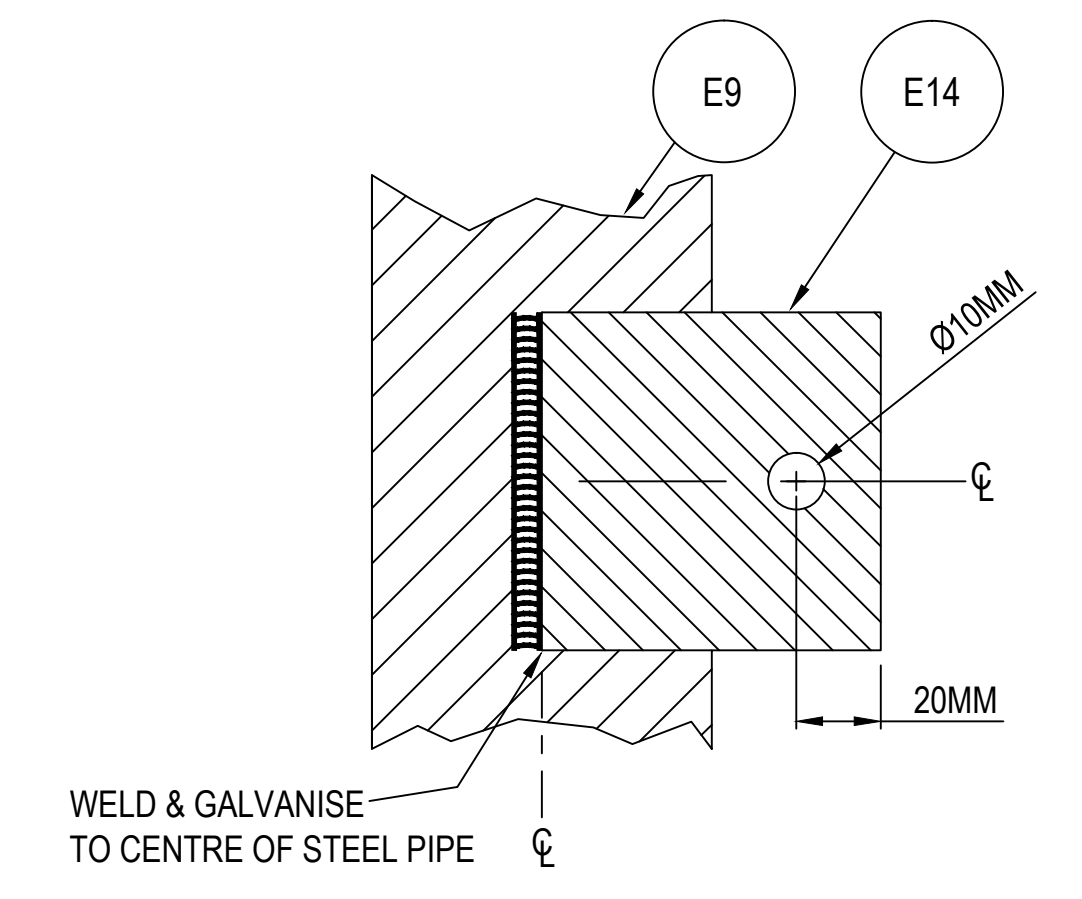
VIEW 'C'
NOT TO SCALE
SIDE VIEW OF MOUNTING TAB BOLTED TO STEEL CHANNEL.



VIEW 'A'
NOT TO SCALE
SIDE VIEW OF BONDING STRAP INSTALLED ONTO STEEL CHANNEL.



VIEW 'B'
NOT TO SCALE
SIDE VIEW OF BONDING STRAP INSTALLED IN PROTECTIVE PIPE. CONDUIT NOT SHOWN FOR CLARITY.



REAR VIEW OF ENLARGEMENT 'B'
NOT TO SCALE
STEEL TUBING AND MOUNTING TAB ASSEMBLY DETAILS

EQUIPMENT SCHEDULE

(EQUIPMENT ITEMS CAN BE SUBSTITUTED WITH AN EQUIVALENT - WHERE APPROVED BY THE PRINCIPAL.)

REF.	ITEM DESCRIPTION	MANUFACTURER	QTY.	ITEM No.
E1	CONDUIT - CORRUGATED - PVC - BLACK - 32MM	CLIPSAL	A.R.	9032CHF
E2	CONDUIT - CORRUGATED - ADAPTER - POLYAMIDE - 34MM - M32 THREAD	ADAPTAFLEX	1	AT34/M32/A/BLY
E3	CONDUIT REDUCER - 40MM - 32MM - PVC - GREY - SCREWED	CLIPSAL	1	264/4SM
E4	CONDUIT REDUCER - 50MM - 40MM - PVC - GREY - SCREWED	CLIPSAL	1	264/5SM
E5	CONDUIT SCREW COUPLING - PLAIN TO SCREW - 50MM TO M50	CLIPSAL	1	258/50
E6	SCREW - BRASS - COUNTERSUNK HEAD - M8 X 34MM	UNSPECIFIED	1	
E7	NUT - BRASS - M8 WITH FLAT WASHER	UNSPECIFIED	2	
E8	BONDING STRAP 25MM ² X 200MM WITH M8 LUGS	UNSPECIFIED	1	
E9	GALVANISED STEEL TUBING - NOMINAL BORE Ø50MM	UNSPECIFIED	2.8M	
E10	CONDUIT - PVC - ORANGE - 50MM	UNSPECIFIED	3M	
E11	CONDUIT - PVC - ORANGE - 50MM X 90° BEND	UNSPECIFIED	1	
E12	THREADED STUD - GALVANISED - M8	HILTI	3	X-M8 P8
E13	NUT - GALVANISED - M8 WITH FLAT WASHER	UNSPECIFIED	3	
E14	FLAT BAR 60MM X 60MM X 5MM THICK	UNSPECIFIED	1	
E15				

NOTES:

- PIPEWORK MAY BE MOUNTED ON THE CONCRETE FACE OF THE STOBIE IF REQUIRED.
- REFER TO SAPN DOCUMENT "SERVICE AND INSTALLATION RULES" 2012 - LOW VOLTAGE SUPPLY SECTION 7.4.6.3 (MECHANICAL PROTECTION OF CONSUMER MAINS)
- IF THE CAPACITY OF A SINGLE PIPE AND CONDUIT IS INSUFFICIENT FOR POWER REQUIREMENTS, A SECOND IDENTICAL CONDUIT & PIPE MAY BE INSTALLED ON THE STOBIE POLE.

THIS DRAWING SUPERSEDES S-4055 SHEET 12

7 MAJOR REDRAW. TITLE WAS TRAFFIC SIGNAL ONLY. SUPERSEDED NOTE ADDED. 6 DRAWING REDRAWN IN DIFFERENT FORMAT 5 DRAWING AMENDED 4 DRAWING AMENDED 3 DRAWING AMENDED 2 DRAWING AMENDED 1 DRAWING AMENDED	SJK CE RJB GW CSB TJC TJS	EC RJB/CE	P. STRATTON R. BASSETT RJB GW/DF CSB/COB TJC TJS	14.02.17 22.3.01 24.3.97 9.3.92 6.9.88 21.8.87 22.1.85	UNCONTROLLED COPY WHEN PRINTED 100 MILLIMETRES ON ORIGINAL DRAWING ALL DIMENSIONS ARE IN METRES UNLESS SHOWN OTHERWISE	Government of South Australia Department of Planning, Transport and Infrastructure	PROJECT No.: DESIGN No.: PROJECT START ROAD RUNNING DISTANCE: PROJECT END ROAD RUNNING DISTANCE:	FILE No.: SURVEY No.:	SCALES: 0.2 0 0.2 0.2 0.3 0.4	DESIGNED: BJD CHECKED: GTJ	DRAFTED: JDF CHECKED: CSB	ACCEPTED FOR USE: R. PAYZE DATE: 03.08.1982	ACCEPTANCE FORM KNET No.: DRAWING No.: SHEET No.: AMEND No.:	S-4516 1 7	SHEET LATITUDE n/a SHEET LONGITUDE n/a
	STANDARD DRAWING ELECTRICAL ASSETS ELECTRICAL SERVICES - STOBIE POLE POWER FEED MECHANICAL PROTECTION GENERAL ASSEMBLY		IN ACCORDANCE WITH DP013												

CAD FILE NAME: 4516 SHEET 0001.DWG