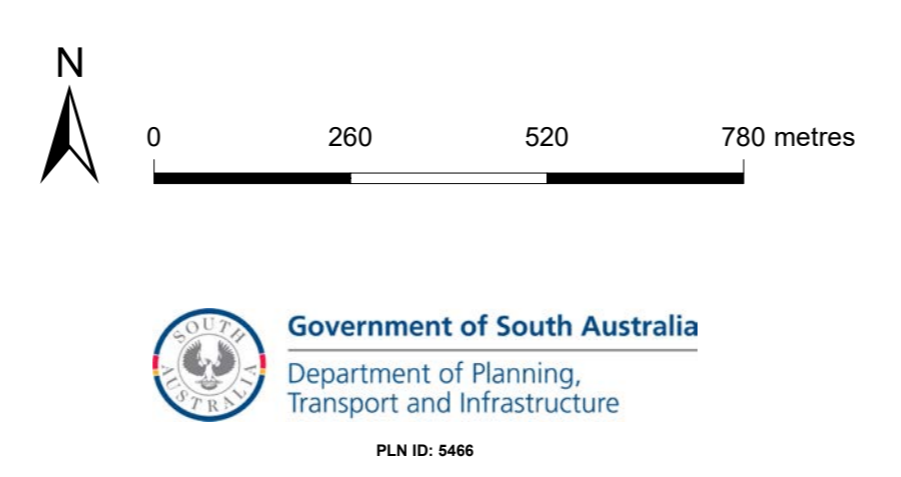


# Burnside Development Plan Map

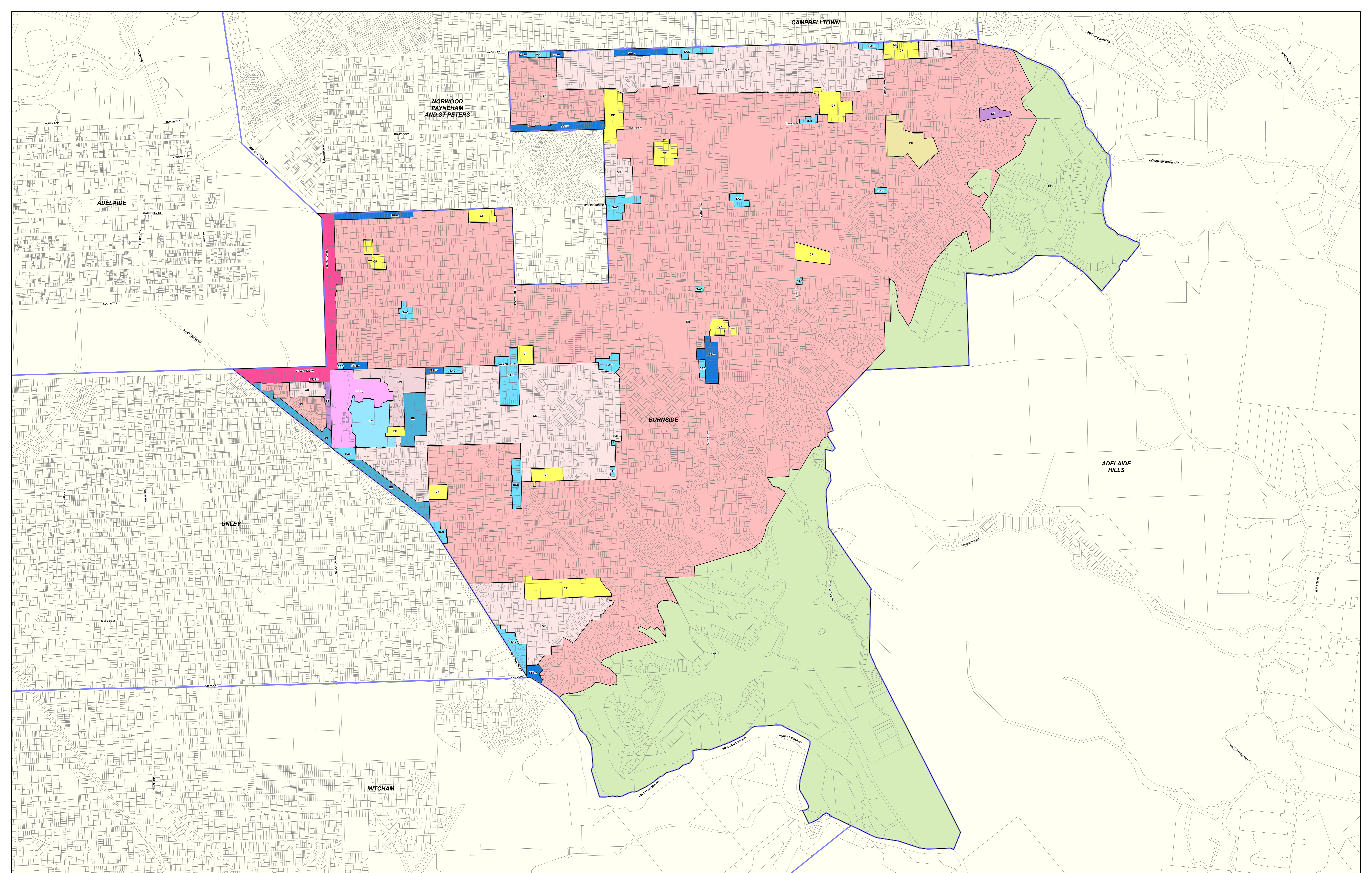
- Commercial
- Community Facilities
- Environmental Constraint
- Heritage
- Miscellaneous
- Residential
- Development Plan
- Zoning
- Policy Area
- Local government boundary
- Cadastre

**Produced by** Department of Planning, Transport and Infrastructure  
 Planning Division  
 GPO Box 1815 Adelaide SA 5001  
 www.sa.gov.au  
 Lambert Conformal Conic  
**Projection**  
**Completed** 9 June 2020

© Government of South Australia 2017  
 No part of this document may be reproduced, stored in a retrieval system, or transmitted in any form, or by any means, without the prior written permission of the publisher, Department of Planning, Transport and Infrastructure.  
 While every reasonable effort has been made to ensure that this document is correct at the time of publication, the State of South Australia and its agencies, instrumentalities, employees and contractors disclaim any and all liability to any person in respect to anything or the consequence of anything done or omitted to be done in reliance upon the whole or any part of this document.



- Zoning**
- AH(C) - Adelaide Historic (Conservation) Zone
  - B - Business
  - BU(FR) - Business (Fulham Road)
  - BU(COR) - Business (Crown/Ormond Road)
  - C - Commercial
  - CC - Capital City Zone
  - CF - City Frame Zone
  - CL - City Living Zone
  - CU - Community
  - DC - District Commercial
  - DCe - District Centre
  - DC(NW) - District Centre (Norwood)
  - EX - Excluded
  - LI - Light Industry
  - LS - Local Shopping
  - MS(A) - Main Street (Adelaide) Zone
  - MS(H) - Main Street (Hut) Zone
  - HC - Historic Conservation
  - HC(MV) - Historic (Conservation) - Mitcham Village
  - HC(C) - Historic Conservation - Centres
  - HF - Hills Face
  - I - Institutional
  - I1 - Institutional (St Andrew's) Zone
  - I2 - Institutional (Government House) Zone
  - B - Institutional (University) Zone
  - LC - Local Commercial
  - LC(A) - Local Commercial (Auldana)
  - LCe - Local Centre
  - LCe(NW) - Local Centre (Norwood)
  - LCe(P) - Local Centre (St Peters)
  - LI - Light Industry
  - LS - Local Shopping
  - MS(A) - Main Street (Adelaide) Zone
  - MS(H) - Main Street (Hut) Zone
  - MU(A) - Mixed Use A
  - MU(B) - Mixed Use B
  - MU(BR) - Mixed Use (Beitar Road)
  - MU(G) - Mixed Use (Glenelg)
  - MU(I) - Mixed Use (Innovation) Zone
  - MU1 - Mixed Uses 1
  - MU2 - Mixed Uses 2
  - MU3 - Mixed Uses 3
  - MU(NC) - Mixed Use Historic (Conservation) Zone
  - NA(HC) - North Adelaide Historic (Conservation) Zone
  - LCe - Local Centre
  - LCe(NW) - Local Centre (Norwood)
  - LCe(P) - Local Centre (St Peters)
  - DC(NW) - District Centre (Norwood)
  - LI - Light Industry
  - LS - Local Shopping
  - MS(A) - Main Street (Adelaide) Zone
  - MS(H) - Main Street (Hut) Zone
  - R(CP) - Residential (Central Plains)
  - RE(P) - Residential (East Plains)
  - RF - Residential (Foot Hills)
  - RS300 - Residential B300
  - RC - Residential Character
  - RC(NW) - Residential Character (Norwood)
  - RH(C) - Residential Historic (Conservation)
  - RH(C) - Residential Historic (Conservation)
  - RR - Residential Regeneration
  - RS(BF) - Residential Streetscape (Built Form)
  - RS(L) - Residential Streetscape (Landscape)
  - Rb - Riverbank Zone
  - R - Recreation
  - SD(Ce) - Specialty Goods Centre
  - SHAN(CL) - State Heritage Area (Colonel Light Gardens)
  - SU - Special Uses (Hawthorn Oval)
  - SU - Special Uses (Kingswood Oval)
  - TA - Tourist Accommodation
  - UC - Urban Corridor
  - WME - Winery (Magill Estate)
  - WPP - Watercourse (Primary Production) zone
  - WC - Watercourse



**Burnside**

**P&D Code Zones - DRAFT**

<b>P&amp;D Code Zones</b>	Urban Corridor (Living)	Productive Economy - Primary Industry
<b>Infrastructure &amp; Movement Systems</b>	Productive Economy - Employment	Peri-Urban
<b>People &amp; Neighbourhoods - Residential</b>	Innovation	Resilient Communities & Environment
General Neighbourhood	Suburban Activity Centre	Hills Face
Housing Diversity Neighbourhood	Business Neighbourhood	Local government boundary
Suburban Neighbourhood	Suburban Business and Innovation	Cadastre
Urban Corridor (Boulevard)	Suburban Employment	

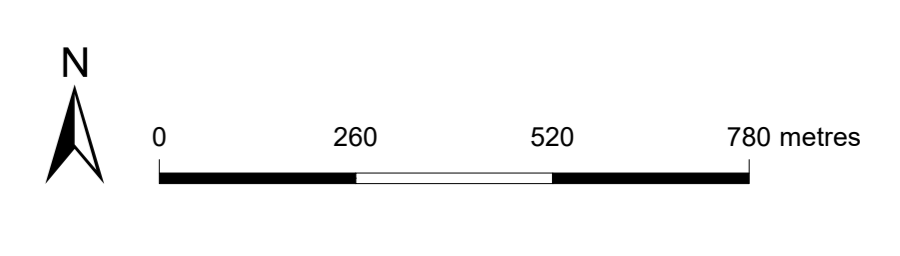
**2019 Code Consultation Map**

**P&D Code Zones Abbreviations**

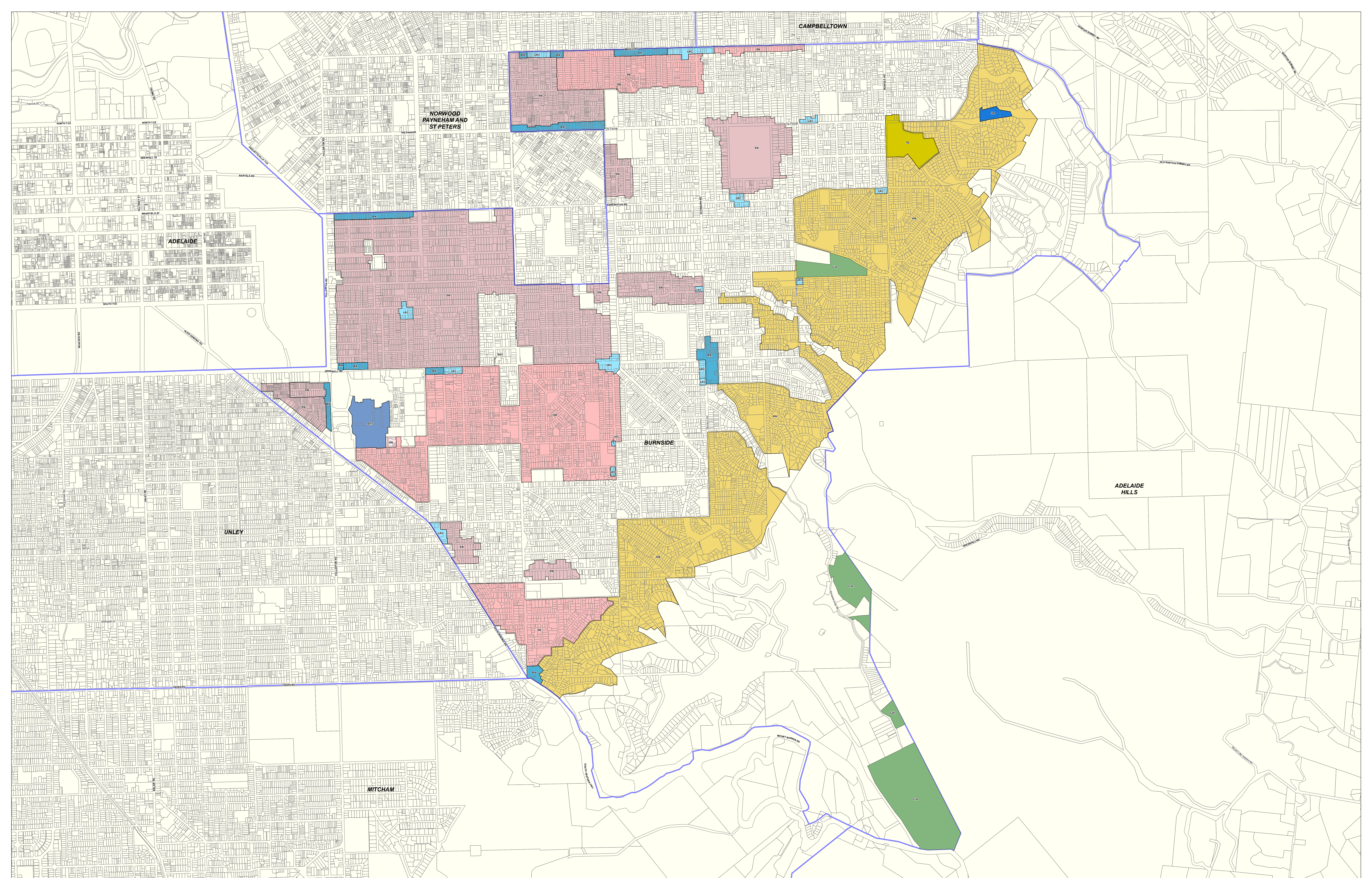
SN	- Business Neighbourhood
CF	- Community Facilities
GN	- General Neighbourhood
HN	- Housing Diversity Neighbourhood
HF	- Hills Face
IN	- Innovation
PU	- Peri-Urban
SAC	- Suburban Activity Centre
SBIN	- Suburban Business and Innovation
SE	- Suburban Employment
SN	- Suburban Neighbourhood
UCBL	- Urban Corridor (Boulevard)
UCL	- Urban Corridor (Living)

Produced by Department of Planning, Transport and Infrastructure  
 Planning and Land Use Services  
 GPO Box 1815 Adelaide SA 5001  
 www.sa.gov.au  
 Lambert Conformal Conic  
 30 September 2019

Projection  
 Compiled  
 © Government of South Australia 2019  
 No part of this document may be reproduced, stored in a retrieval system, or transmitted in any form or by any means, without the prior written permission of the publisher, Department of Planning, Transport and Infrastructure.



While every reasonable effort has been made to ensure that this document is correct at the time of publication, the State of South Australia and its agencies, representatives, employees and contractors disclaim any and all liability to any person in respect to anything or the consequences of anything done or omitted to be done in reliance upon the whole or any part of this document.



**Burnside**

**P&D Code Zones - DRAFT**

- |  |                                     |          |
|--|-------------------------------------|----------|
| <b>P&amp;D Code Zones</b>                        | Local Activity Centre               | Cadastre |
| <b>People &amp; Neighbourhoods - Residential</b> | Strategic Innovation                |          |
| Established Neighbourhood                        | Suburban Activity Centre            |          |
| General Neighbourhood                            | Suburban Business                   |          |
| Hills Neighbourhood                              | Tourism Development                 |          |
| Suburban Neighbourhood                           | Resilient Communities & Environment |          |
| Business Neighbourhood                           | Conservation                        |          |
|  | Local government boundary           |          |

**2020 Updated Code Consultation Map**

Produced by Attorney-General's Department  
 Planning and Land Use Services  
 GPO Box 1815 Adelaide SA 5001  
 www.sa.gov.au  
 Lambert Conformal Conic  
 4 November 2020

© Government of South Australia 2020  
 No part of this document may be reproduced, stored in a retrieval system, or transmitted in any form, or by any means, without the prior written permission of the publisher, the Attorney-General's Department.

While every reasonable effort has been made to ensure that this document is correct at the time of publication, the State of South Australia and its agencies, representatives, employees and contractors disclaim any and all liability to any person in respect to existing or the consequences of anything done or omitted to be done in reliance upon the whole or any part of this document.

**Projection**  
 Lambert Conformal Conic

**Completed**  
 4 November 2020

N

0 250 500 750 metres

**Government of South Australia**  
 Attorney-General's Department

PLAN ID: 1812

Current Development Plan Zone	Current Development Plan Policy Area	Current Development Plan Precinct	Consultation November 2019 Code Proposal	Consultation November 2020 Code Proposal	Planning & Design Code Subzone
Business (Fullarton Road)			Suburban Employment	Business Neighbourhood	
Business (Glen Osmond Road)			Business Neighbourhood	Business Neighbourhood	
Community	Community Area 1		Community Facilities	Community Facilities	Neighbourhood
Community	Community Area 2		Community Facilities	Community Facilities	Neighbourhood
Community			Community Facilities	Community Facilities	Neighbourhood
District Centre	District Centre Area 1		Suburban Activity Centre	Suburban Activity Centre	
District Centre	District Centre Area 2		Suburban Activity Centre	Suburban Activity Centre	
District Centre	District Centre Area 3		Community Facilities	Community Facilities	
Hills Face			Hills Face	Hills Face	
Historic Conservation	Historic Conservation Area 1 Rose Park		Suburban Neighbourhood	Established Neighbourhood	
Historic Conservation	Historic Conservation Area 2 Eastwood		Suburban Neighbourhood	Established Neighbourhood	
Historic Conservation	Historic Conservation Area 3 St George's (Wootoona Tce)		Suburban Neighbourhood	Established Neighbourhood	
Historic Conservation	Historic Conservation Area 4 Beulah Park		Suburban Neighbourhood	Established Neighbourhood	
Historic Conservation	Historic Conservation Area 5 Tusmore		Suburban Neighbourhood	Established Neighbourhood	
Historic Conservation	Historic Conservation Area 6 Toorak Gardens (North)		Suburban Neighbourhood	Established Neighbourhood	
Historic Conservation	Historic Conservation Area 7 Toorak Gardens (Fergusson Square)		Suburban Neighbourhood	Established Neighbourhood	
Historic Conservation	Historic Conservation Area 8 Glenunga Park		Suburban Neighbourhood	Established Neighbourhood	
Historic Conservation	Historic Conservation Area 9 Kensington Gardens (Reserve)		Suburban Neighbourhood	Established Neighbourhood	
Local Business	Local Business Area 1		Suburban Business and Innovation	Business Neighbourhood	
Local Business	Local Business Area 2		Suburban Business and Innovation	Business Neighbourhood	
Local Business			Suburban Business and Innovation	Business Neighbourhood	
Local Centre	Local Centre Area A		Suburban Activity Centre	Local Activity Centre	
Local Centre	Local Centre Area B		Suburban Activity Centre	Local Activity Centre	
Local Centre			Suburban Activity Centre	Local Activity Centre	
Local Commercial (Auldana)			Suburban Employment	Suburban Business	
Mixed Use (Glenside)	Mixed Use (Glenside) Area 1		Innovation	Suburban Innovation	Rehabilitation
Mixed Use (Glenside)	Mixed Use (Glenside) Area 2		Innovation	General Neighbourhood	
Mixed Use (Glenside)	Mixed Use (Glenside) Area 3		Business Neighbourhood	Business Neighbourhood	
Mixed Use (Glenside)	Mixed Use (Glenside) Area 4		Community Facilities	Community Facilities	
Neighbourhood Centre	Neighbourhood Centre Area 1		Suburban Activity Centre	Suburban Activity Centre	
Neighbourhood Centre	Neighbourhood Centre Area 2		Suburban Activity Centre	Suburban Activity Centre	
Neighbourhood Centre	Neighbourhood Centre Area 3		Suburban Activity Centre	Suburban Activity Centre	
Neighbourhood Centre	Neighbourhood Centre Area		Suburban Activity Centre	Suburban Activity Centre	
Office			Business Neighbourhood	Business Neighbourhood	

Current Development Plan Zone	Current Development Plan Policy Area	Current Development Plan Precinct	Consultation November 2019 Code Proposal	Consultation November 2020 Code Proposal	Planning & Design Code Subzone
Residential	Residential Area 1 Greater Beulah Park		Suburban Neighbourhood	Established Neighbourhood	
Residential	Residential Area 2 Northern		General Neighbourhood	Suburban Neighbourhood/General Neighbourhood	
Residential	Residential Area 3 Magill (Chapel)		General Neighbourhood	General Neighbourhood	
Residential	Residential Area 4 Magill (Romalo)		Suburban Neighbourhood	Suburban Neighbourhood	
Residential	Residential Area 5 Kensington Park (South West)		General Neighbourhood	Established Neighbourhood	
Residential	Residential Area 6 Greater Kensington Park		Suburban Neighbourhood	Suburban Neighbourhood	
Residential	Residential Area 7 Greater Kensington Gardens		Suburban Neighbourhood	Suburban Neighbourhood	
Residential	Residential Area 8 Rosslyn Park		Suburban Neighbourhood	Suburban Neighbourhood	
Residential	Residential Area 9 Northern Foothills		Suburban Neighbourhood	Hills Neighbourhood	
Residential	Residential Area 10 Leabrook (North)		Suburban Neighbourhood	Suburban Neighbourhood	
Residential	Residential Area 11 Leabrook (South)		Suburban Neighbourhood	Established Neighbourhood	
Residential	Residential Area 12 Erindale		Suburban Neighbourhood	Suburban Neighbourhood	
Residential	Residential Area 13 Dulwich		Suburban Neighbourhood	Established Neighbourhood	
Residential	Residential Area 14 Toorak Gardens (South-East)		Suburban Neighbourhood	Suburban Neighbourhood	
Residential	Residential Area 15 First Creek		Suburban Neighbourhood	Suburban Neighbourhood	
Residential	Residential Area 16 Burnside (North)		Suburban Neighbourhood	Suburban Neighbourhood	
Residential	Residential Area 17 Ferguson		Suburban Neighbourhood	Hills Neighbourhood	
Residential	Residential Area 18 Eastwood		General Neighbourhood	Established Neighbourhood	
Residential	Residential Area 19 Glenside (West)		Housing Diversity Neighbourhood	Housing Diversity Neighbourhood	
Residential	Residential Area 20 Glenside (Village)		General Neighbourhood	Suburban Neighbourhood	
Residential	Residential Area 21 Linden Park		General Neighbourhood	Suburban Neighbourhood	
Residential	Residential Area 22 Beaumont Common		Suburban Neighbourhood	Suburban Neighbourhood	
Residential	Residential Area 23 Frewville			Suburban Neighbourhood	
Residential	Residential Area 24 Glenunga (North)		Suburban Neighbourhood	Suburban Neighbourhood	
Residential	Residential Area 25 St Georges		Suburban Neighbourhood	Suburban Neighbourhood	
Residential	Residential Area 26 Glenunga (South)		Suburban Neighbourhood	Suburban Neighbourhood	
Residential	Residential Area 27 Southern Foothills		Suburban Neighbourhood	Hills Neighbourhood	
Residential	Residential Area 28 Glen Osmond		General Neighbourhood	Suburban Neighbourhood	
Residential	Residential Area 29 Skye and Auldana		Suburban Neighbourhood	Hills Neighbourhood	
Urban Corridor	Boulevard		Urban Corridor (Boulevard)	Urban Corridor (Boulevard)	
Urban Corridor	Transit Living (Glenside)		Urban Corridor (Living)	Urban Corridor (Living)	
Watercourse	Watercourse Area 1 Glynburn Road		Suburban Neighbourhood	Local Activity Centre	
Watercourse	Watercourse Area 2 Coopers Brewery		Suburban Neighbourhood	Suburban Neighbourhood	
Watercourse			Suburban Neighbourhood	Suburban Neighbourhood	
Winery (Magill Estate)			Peri Urban	Tourism Development	Winery Experience