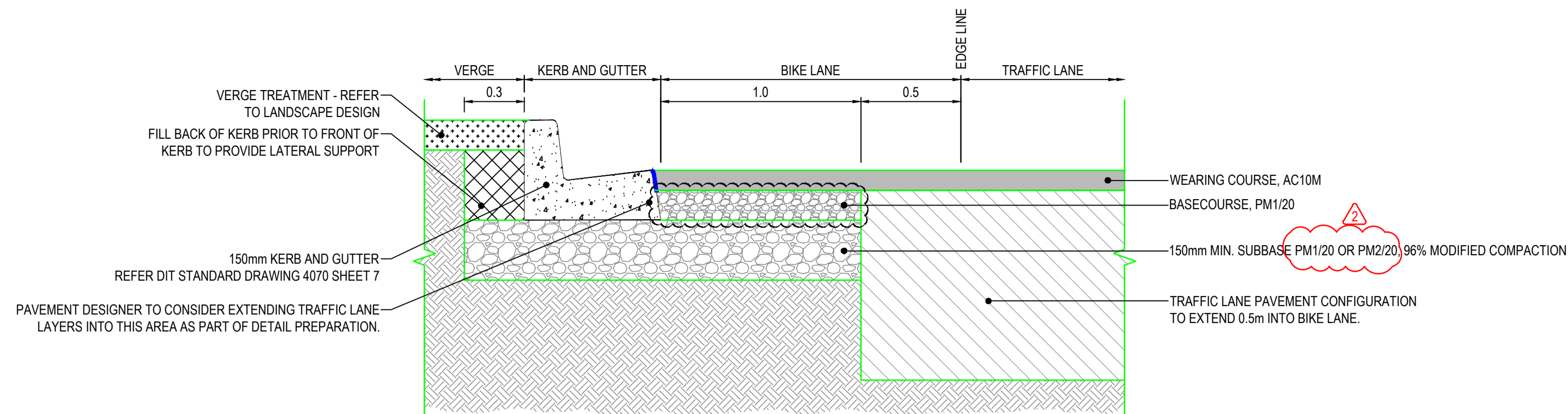


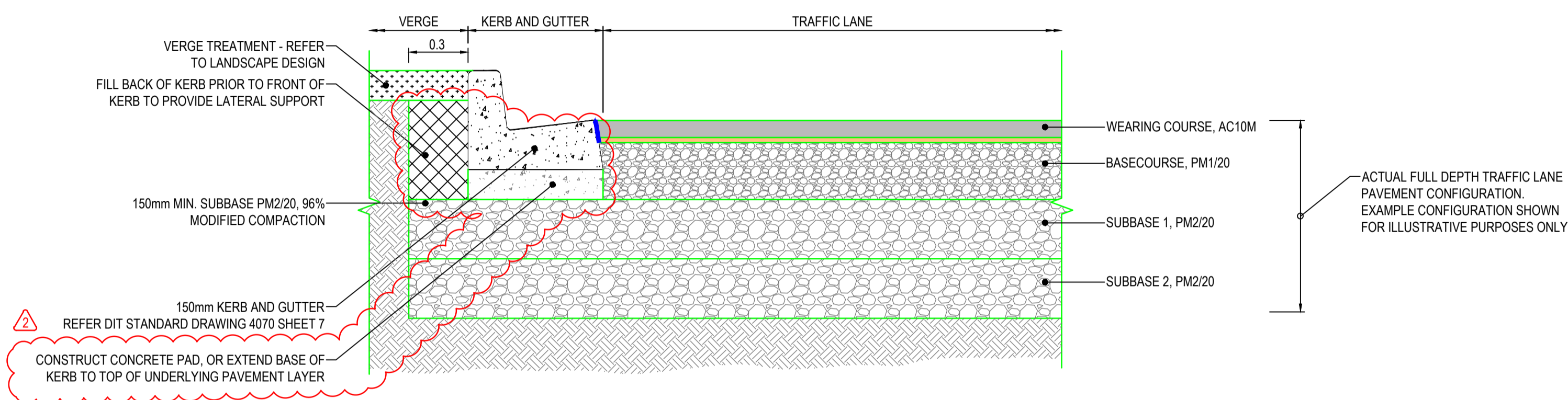
JOINT DETAIL 17 - KERB AND GUTTER RECONSTRUCTION DETAIL - ADJACENT TRAFFICKED LANE

NOTE:
 • THIS JOINT DETAIL APPLIES WHERE NEW KERB AND GUTTER IS BEING CONSTRUCTED ADJACENT TO AN EXISTING TRAFFIC LANE.



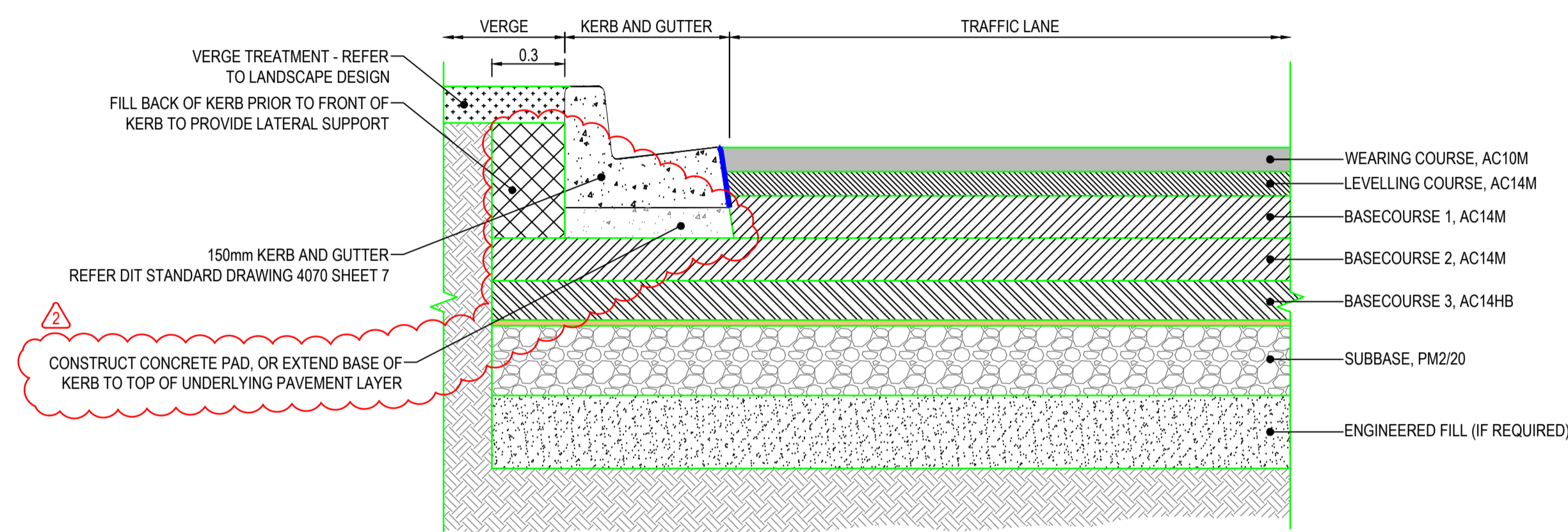
JOINT DETAIL 18 - KERB AND GUTTER DETAIL - NEW CONSTRUCTION - ADJACENT BIKE LANE

NOTE:
 • THIS JOINT DETAIL APPLIES WHERE NEW KERB AND GUTTER IS BEING CONSTRUCTED ADJACENT TO NEW TRAFFIC LANE PAVEMENTS. E.G. ON NEW ROADS, WIDENINGS, ETC.



JOINT DETAIL 19 - KERB AND GUTTER DETAIL - NEW CONSTRUCTION - ADJACENT TRAFFIC LANE - THIN ASPHALT ON GRANULAR PAVEMENT

NOTE:
 • THIS JOINT DETAIL APPLIES WHERE NEW KERB AND GUTTER IS BEING CONSTRUCTED ADJACENT TO A NEW THIN ASPHALT ON GRANULAR TRAFFIC LANE.



JOINT DETAIL 20 - KERB AND GUTTER DETAIL - NEW CONSTRUCTION - ADJACENT TRAFFIC LANE - FULL DEPTH ASPHALT PAVEMENT

NOTE:
 • THIS JOINT DETAIL APPLIES WHERE NEW KERB AND GUTTER IS BEING CONSTRUCTED ADJACENT TO A NEW FULL DEPTH ASPHALT TRAFFIC LANE PAVEMENT.

GENERAL NOTE - USE OF THESE JOINT DETAILS:

- THESE JOINT DETAILS AND NOTES ARE PROVIDED AS GENERIC EXAMPLES TO ILLUSTRATE TYPICAL JOINT DETAILS ADOPTED ON DIT PROJECTS. **THEY MUST BE ADAPTED TO SUIT SPECIFIC PROJECT CONDITIONS BY THE PAVEMENT DESIGNER.** THIS INCLUDES REMOVING OR AMENDING NOTES, ADJUSTING NUMBER OF PAVEMENT LAYERS TO MATCH ACTUAL PROJECT CONFIGURATIONS, CONSIDERING USE OF REINFORCING GRIDS OR FABRICS, ADJUSTING PAVEMENT TYPE LABELS, CONSTRUCTION NOTES AND SO ON.
- WHERE WEARING COURSE CHANGES AT JOINT DRAINAGE MUST BE CONSIDERED, e.g. PERMEABLE OGA TO IMPERMEABLE DGA OR SMA JOINT.

3. ASPHALT - FACE OF JOINTS AND PAVEMENT LAYER SURFACE TO BE PREPARED AND TACK COATED IN ACCORDANCE WITH DIT MASTER SPECIFICATION (INCLUDING CRACK SEALING, TACK COATING OR OTHER TREATMENTS AS APPROPRIATE). BLUE LINE CORRESPONDS TO A PREPARED SURFACE WITH A TACK COAT. TACK COAT SHALL APPLIED TO HORIZONTAL PAVEMENT LAYER SURFACES AS PER DIT MASTER SPECIFICATION BUT HAS NOT BEEN SHOWN ON JOINT DETAILS.

4. GRANULAR BASECOURSE SURFACE TO BE PREPARED AND BITUMINOUS PRIME APPLIED IN ACCORDANCE WITH DIT MASTER SPECIFICATION. ORANGE LINE INDICATES PREPARED SURFACE WITH BITUMINOUS PRIME.

5. OPEN GRADED ASPHALT WEARING COURSE - WATERPROOFING SEAL TO BE APPLIED BELOW OGA ON DGA LEVELLING COURSE. (REFER GREEN LINE ON DETAIL).

6. JOINT TO BE CRACKED SEALED AT SURFACE 6 MONTHS AFTER OPENING, IF REQUIRED FOR DGA OR SMA SURFACE. CRACK SEALING SHALL NOT BE APPLIED FOR OGA WEARING COURSE.

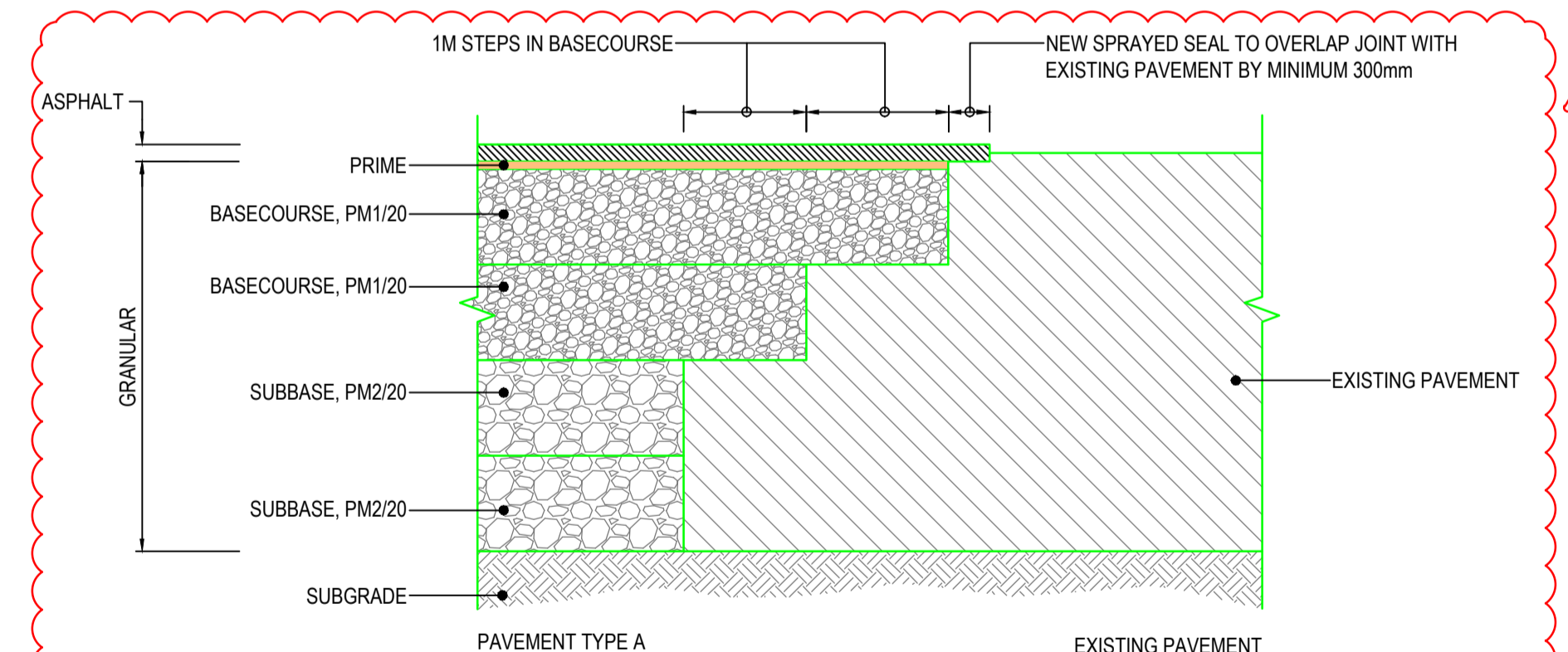
7. THESE JOINT DETAILS ARE NOT APPLICABLE FOR TRENCH REINSTATEMENTS. REFER TO DIT DOCUMENT "PAVEMENT REINSTATEMENT MANUAL".

8. CONTRACTOR TO PROTECT EXISTING PAVEMENT EDGE THROUGHOUT WORKS. RECTIFICATION OF DAMAGE IS CONTRACTOR'S RESPONSIBILITY AND COST.

CONSTRUCTION NOTES:

THESE ARE TYPICAL NOTES WHICH MUST BE ADAPTED FOR EACH PROJECT BY THE PAVEMENT DESIGNER.

1. THESE JOINT DETAILS WERE DEVELOPED PRIOR TO ENGAGEMENT OF THE CONSTRUCTION CONTRACTOR AND KNOWLEDGE OF THEIR WORK METHODS AND STAGING. THEY ARE EXPECTED TO BE SUITABLE FOR COMMON CONSTRUCTION PRACTICES, BUT FURTHER ADVICE SHOULD BE OBTAINED FROM THE PAVEMENT DESIGNER WHERE THEY DON'T SUIT THE PROPOSED CONSTRUCTION METHODOLOGY AND STAGING.
2. REMOVE ANY DEFECTIVE MATERIAL (E.G. LOOSE, CRACKED, SETTLED, DEFORMED, ERODED, POORLY COMPACTED, TEMPORARY RAMPS) AT THE JOINT PRIOR TO PLACING NEXT PAVEMENT.



JOINT DETAIL 21 - PAVEMENT

NEW SPRAYED SEAL ON GRANULAR TO EXISTING PAVEMENT TRANSVERSE JOINT (TYPICALLY MATCH INTO EXISTING PAVEMENT AT LIMIT OF WORKS)

PAVEMENT DESIGNER TO NOTE IN PREPARING JOINT DETAIL: JOINT DETAIL DESIGN MUST CONSIDER THE EXISTING PAVEMENT CONFIGURATION, INCLUDING THE TYPE AND THICKNESS OF SURFACING, STRUCTURAL LAYERS, RISK OF DISTURBANCE DURING CONSTRUCTION AND CONSTRUCTABILITY / LIKELY CONSTRUCTION PLANT.

INDEX SHEET REFERENCE: N/A SHEET N/A



Department for Infrastructure and Transport

PROJECT No.: FILE No.:
 DESIGN No.: SURVEY No.:
 PROJECT START ROAD RUNNING DISTANCE:
 PROJECT END ROAD RUNNING DISTANCE:

SCALES: NOT TO SCALE

**STANDARD DRAWING
 PAVEMENT JOINT DETAILS
 KERB AND GUTTER DETAILS**

SHEET 6 OF 7

2	NOTES UPDATED. TYPICAL PAVEMENT LAYERS AMENDED	WGA	MA	MITCHELL ALLEN	03.10.25
1	NOTE 8 UPDATED "PAVEMENT REINSTATEMENT MANUAL"	NKS	J.deL.	M.SLUCZANOWSKI	31.10.23

No. AMENDMENT DESCRIPTION

BY CHECK ACCEPTANCE DATE

UNCONTROLLED COPY WHEN PRINTED

100 MILLIMETRES ON ORIGINAL DRAWING

ALL DIMENSIONS ARE IN METRES UNLESS SHOWN OTHERWISE

DESIGNED: CHECKED:

PAUL MORGAN
 TITLE: PRINCIPAL PAVEMENT ENGINEER
 DATE: 05.04.2022

ACCEPTANCE FORM KNET No.: 18548108

DRAWING No.: 95272

SHEET No.: 6

AMEND No.: 2

CAD FILE NAME: 95272 SHEET 0006-AND ZDWG