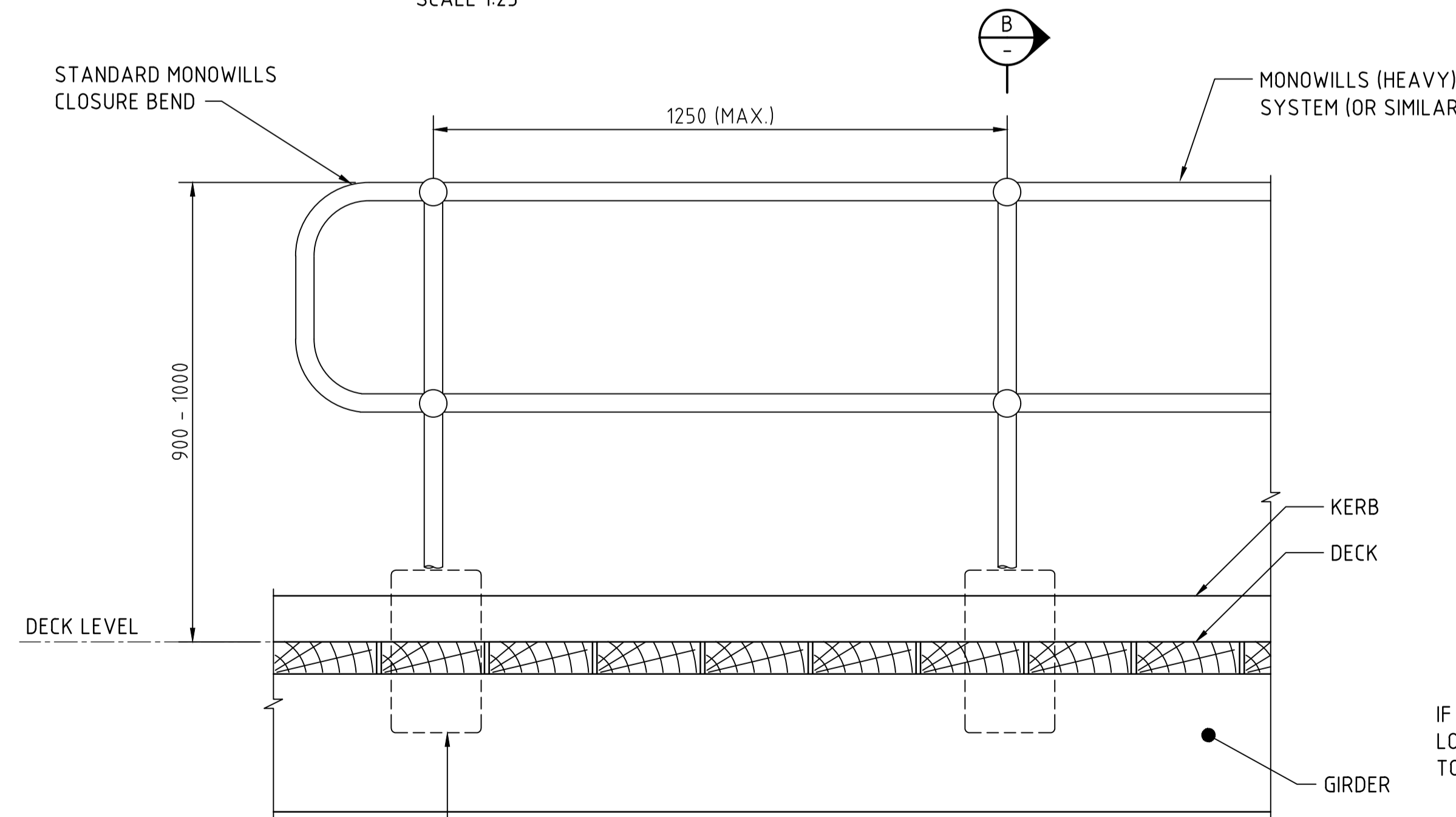


TYPICAL LADDER ELEVATION
SCALE 1:25

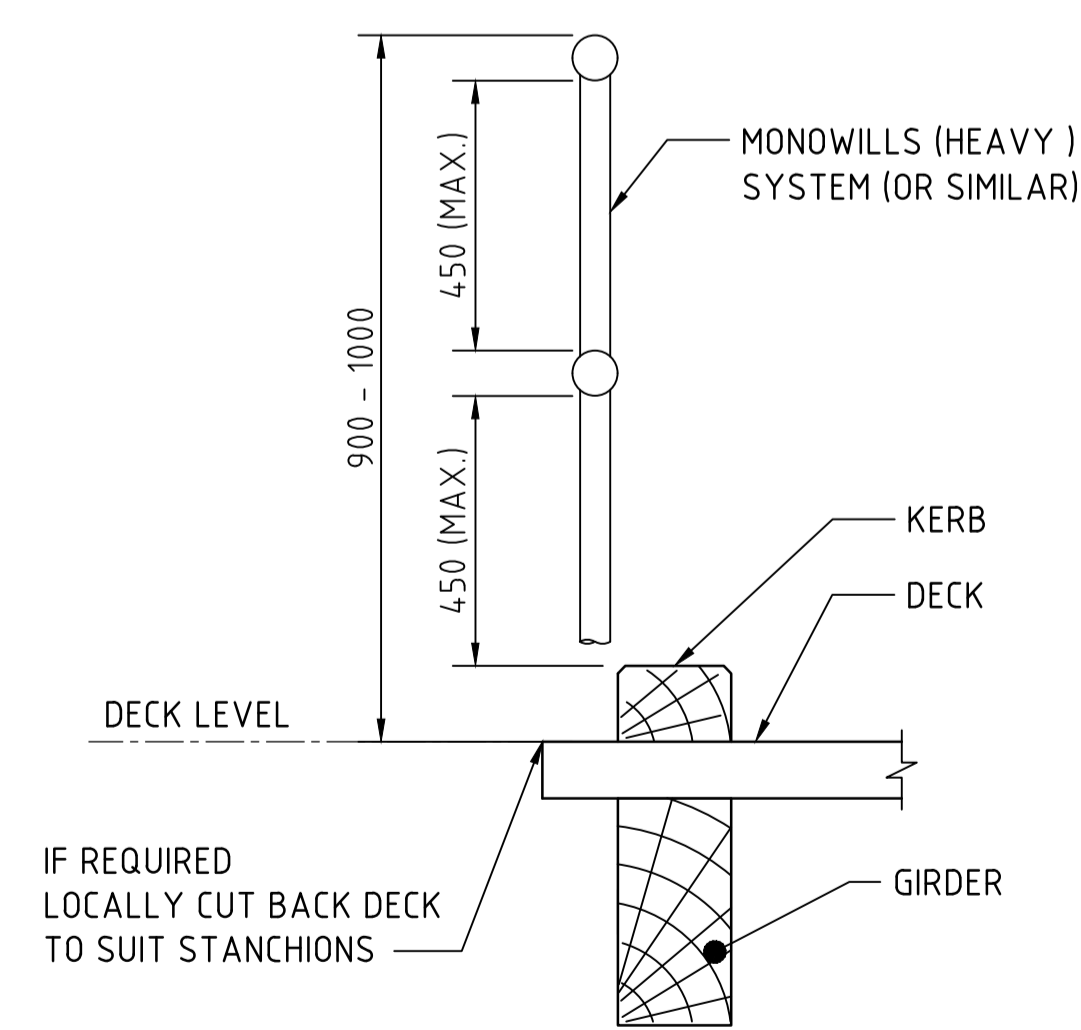
DESIGN CHANGES REQUIRED FOR STEEL SHS (OR TIMBER) PILE CONFIGURATION:

1. WALER SUBSTITUTED 300x150 (MIN.) TIMBER.
2. LADDER STUB-TIMBER WALER CONNECTION TO BE SIMILAR TO LADDER-EXISTING GIRDER CONNECTION.
3. TIMBER WALER-PILE CONNECTION TO BE SIMILAR TO TIMBER CROSS BRACE PILE CONNECTION.

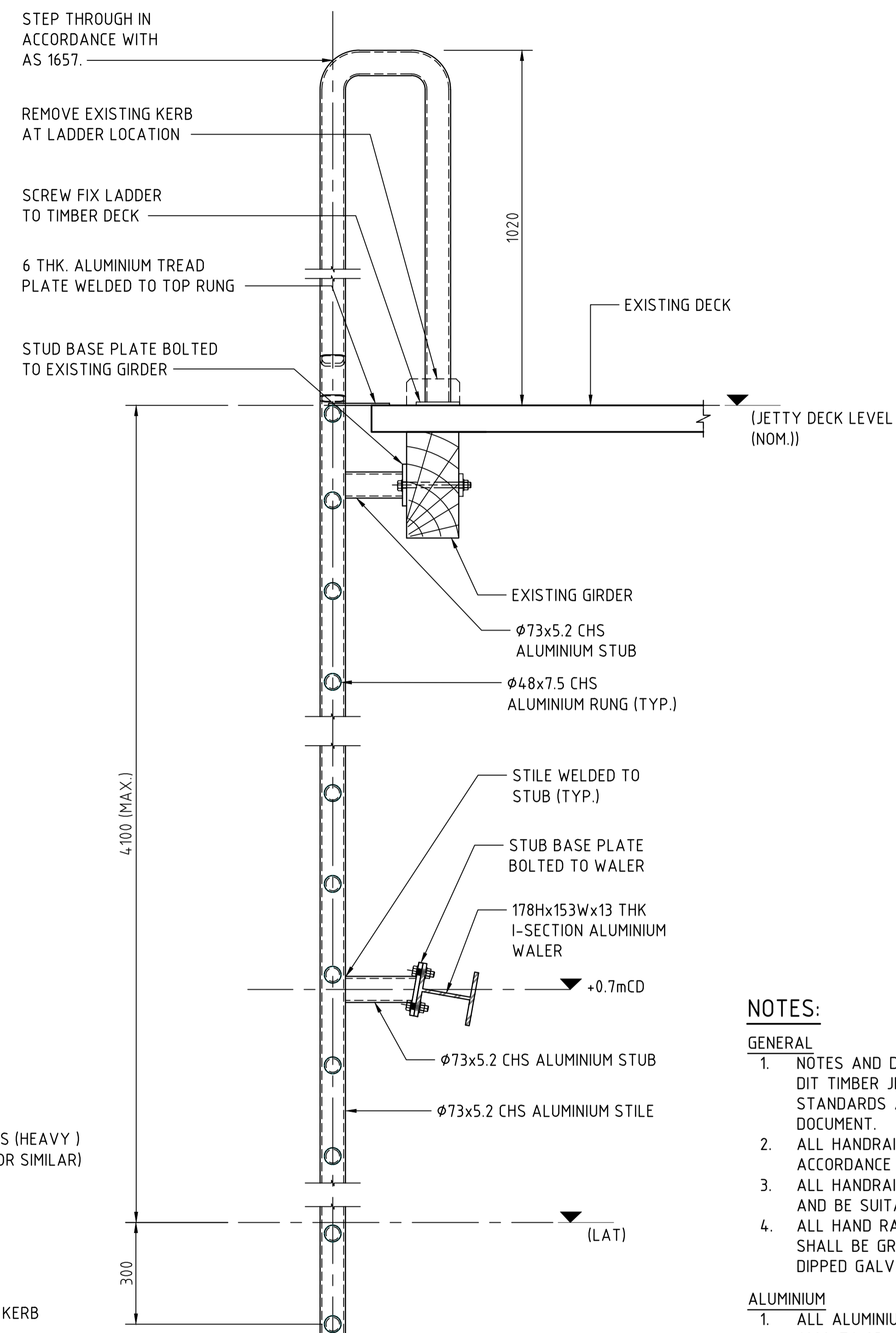


TYPICAL HANDRAIL DETAIL
SCALE 1:10

FIXING ARRANGEMENT TO JETTY USING TYPICAL MONOWILLS BASE PLATE TO BE VERIFIED PRIOR TO INSTALLATION



SECTION B-B
SCALE 1:10



SECTION A-A
SCALE 1:10

NOTES:

- GENERAL**
1. NOTES AND DRAWINGS TO READ IN CONJUNCTION WITH THE DIT TIMBER JETTY WORKS MASTER SPECIFICATION AND ALL STANDARDS / SPECIFICATIONS REFERENCED WITH THE DOCUMENT.
 2. ALL HANDRAILING TO BE HOT DIPPED GALVANISED IN ACCORDANCE WITH AS/NZS 4680.
 3. ALL HANDRAILING TO BE IN ACCORDANCE WITH AS 1657 AND BE SUITABLE FOR AS 1170.1 C3 LOADING.
 4. ALL HAND RAILING STANCHION BOLTS, NUTS AND WASHERS SHALL BE GRADE 8.8 IN ACCORDANCE WITH AS1214 AND HOT DIPPED GALVANISED IN ACCORDANCE WITH AS 4680.
- ALUMINIUM**
1. ALL ALUMINIUM SECTIONS ARE TO BE GRADE 6061-T6, 6082-T6 OR 6351-T6 IN ACCORDANCE WITH AS 1664, AS 1866 AND AS 1867.
 2. ALL ALUMINIUM PLATES TO BE GRADE 5052-H32 OR 5083-H116/H321 IN ACCORDANCE WITH AS 1664 AND AS 1734.
 3. ALL WELDING TO BE IN ACCORDANCE WITH AS 1665.
 4. ALL BOLTS ARE TO BE A4-70/S STAINLESS.
 5. CONTACT BETWEEN DISSIMILAR METALS SHALL BE ISOLATED WITH SEPARATOR TYPE OR FIBRE WASHERS.

FILE: V:\2020\202200 - 202299\202246 - DIT - 2020-21 Jetty Remediation Projects\Drafting\Typ\DIT Jetty Construction Details\S-6997-12_1.dwg

22/09/2023 3:41:25 PM

1	ISSUED FOR USE	WGA	WGA	L. MASE	22.09.23
No.	AMENDMENT DESCRIPTION	BY	CHECK	ACCEPTANCE	DATE

PRELIMINARY DRAWING
NOT FOR CONSTRUCTION

100 MILLIMETRES ON ORIGINAL A1 DRAWING

ALL DIMENSIONS ARE IN MILLIMETRES UNLESS SHOWN OTHERWISE

DESIGNED	WGA
QUALIFICATION DATE:	
REVIEWER	DIT
QUALIFICATION DATE:	
INDEPENDENT DESIGN CERTIFIER (IF REQUIRED)	
QUALIFICATION DATE:	
DESIGNED	WGA
CHECKED:	AJO
DRAFTED	WGA
REVIEWED:	DIT
ACCEPTED FOR USE:	L.MASE
DATE:	22/09/2023

Government of South Australia
Department for Infrastructure and Transport

STANDARD DRAWINGS		JETTY CONSTRUCTION	
TYPICAL JETTY DETAILS			
ACCEPTANCE FORM KNET No.:	DRAWING No.:	SHEET No.:	AMEND No.:
	S-6997	12	1
LATITUDE:		LONGITUDE:	