

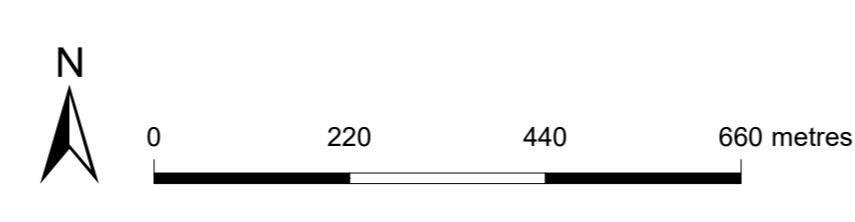
# Campbelltown Development Plan Map

- Commercial
- Community Facilities
- Environmental Constraint
- Industrial
- Miscellaneous
- Open Space
- Residential
- Development Plan
- Zoning
- Policy Area
- Precinct
- Local government boundary
- Cadastre

Produced by Department of Planning, Transport and Infrastructure  
 Planning Division  
 GPO Box 1815 Adelaide SA 5001  
 www.ssa.gov.au  
 Lambert Conformal Conic  
 9 June 2020

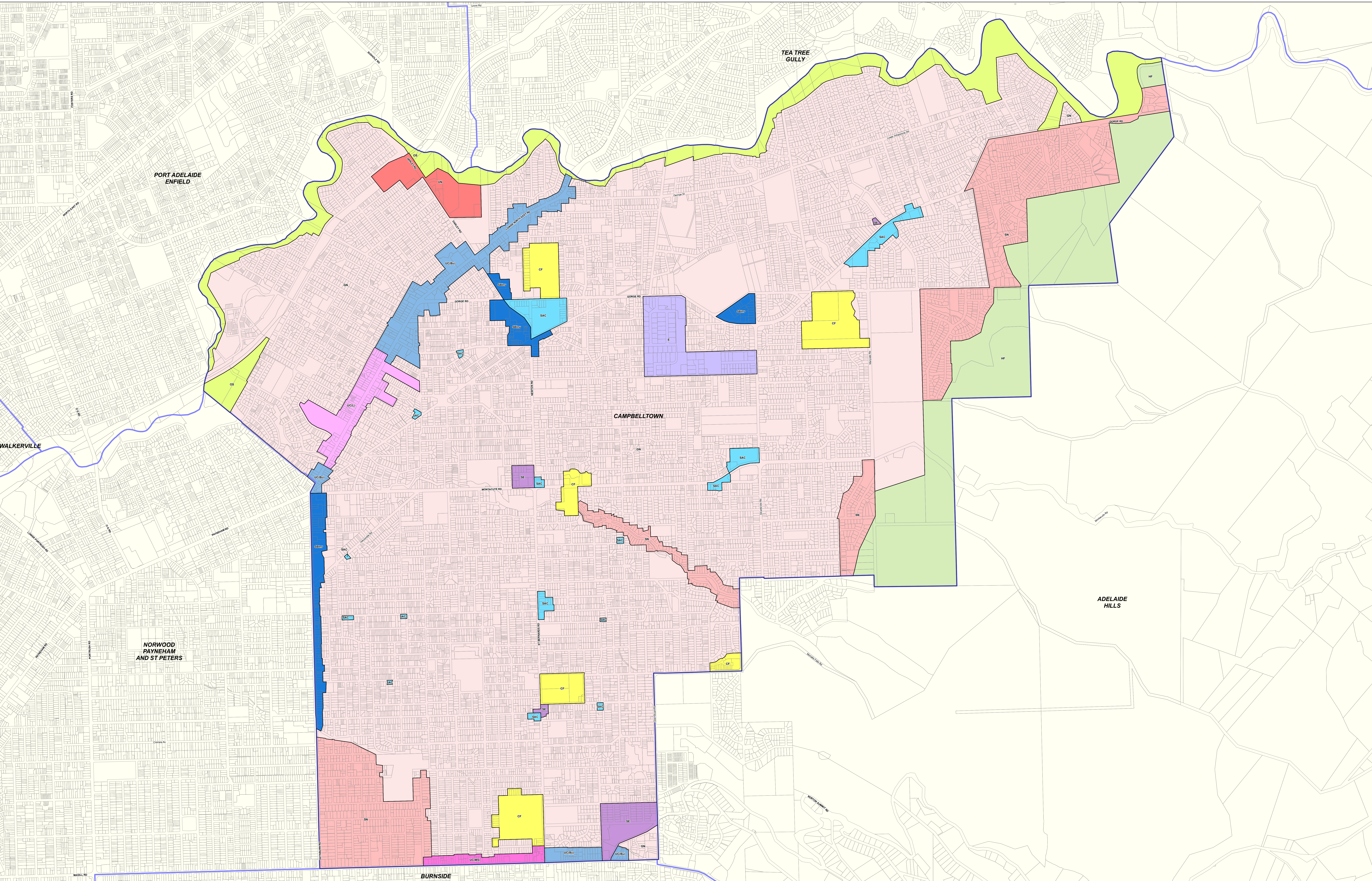
© Government of South Australia 2017  
 No part of this document may be reproduced, stored in a retrieval system, or transmitted in any form, or by any means, without the prior written permission of the publisher, Department of Planning, Transport and Infrastructure.

While every reasonable effort has been made to ensure that this document is correct at the time of publication, the State of South Australia and its agencies, representatives, employees and contractors disclaim any and all liability to any person in respect to anything or the consequences of anything done or omitted to be done in reliance upon the whole or any part of this document.



- |                                                                                                                                                                                                                                                                                                                                                                                                                                                                                                                |                                                                                                                                                                                                                                                                                                                                                                                                                                                                                                                                                                                                                                                                                           |                                                                                                                                                                                                                                                                                                                                                                                                                                                                                                                                |                                                                                                         |
|----------------------------------------------------------------------------------------------------------------------------------------------------------------------------------------------------------------------------------------------------------------------------------------------------------------------------------------------------------------------------------------------------------------------------------------------------------------------------------------------------------------|-------------------------------------------------------------------------------------------------------------------------------------------------------------------------------------------------------------------------------------------------------------------------------------------------------------------------------------------------------------------------------------------------------------------------------------------------------------------------------------------------------------------------------------------------------------------------------------------------------------------------------------------------------------------------------------------|--------------------------------------------------------------------------------------------------------------------------------------------------------------------------------------------------------------------------------------------------------------------------------------------------------------------------------------------------------------------------------------------------------------------------------------------------------------------------------------------------------------------------------|---------------------------------------------------------------------------------------------------------|
| <ul style="list-style-type: none"> <li>BL - Business</li> <li>LI - Light Industry</li> <li>C - Commercial</li> <li>CP - Caravan and Tourist Park</li> <li>CU - Community</li> <li>DC - District Commercial</li> <li>DCc - District Centre</li> <li>DS - District Shopping</li> <li>EX - Excluded</li> <li>HF - Hills Face</li> <li>HI - Home Industry</li> <li>IN - Industry</li> <li>INF - Infrastructure</li> <li>LBU - Local Business</li> <li>LC - Local Commercial</li> <li>LCC - Local Centre</li> </ul> | <ul style="list-style-type: none"> <li>LCc(SIP) - Local Centre (St Peters)</li> <li>LI - Light Industry</li> <li>LO - Local Office</li> <li>LPR(T) - Linear Park (River Terraces)</li> <li>LS - Local Shopping</li> <li>MOSS - Metropolitan Open Space System</li> <li>MU - Mixed Use</li> <li>MUN(C) - Mixed Use Historic (Conservation)</li> <li>MEX - Mineral Extraction</li> <li>NCc - Neighbourhood Centre</li> <li>PP - Public Purpose</li> <li>R - Residential</li> <li>RI - Residential</li> <li>RC - Residential Character</li> <li>RC(Ne) - Residential Character (Norwood)</li> <li>RHC - Residential Historic (Conservation)</li> <li>SAN - Suburban Activity Node</li> </ul> | <ul style="list-style-type: none"> <li>SN - Suburban Neighbourhood</li> <li>UE - Urban Employment</li> <li>UC - Urban Centre</li> <li>WPP - Watershed (Primary Production) zone</li> </ul> <p>Policy Area</p> <ol style="list-style-type: none"> <li>1 - Commercial</li> <li>10 - High Street</li> <li>2 - Linear Park River Terraces</li> <li>3 - Regeneration</li> <li>4 - Suburban</li> <li>5 - Leabrook Drive</li> <li>6 - Footfills</li> <li>7 - Low Density</li> <li>8 - Business</li> <li>9 - Transit Living</li> </ol> | <p>Precinct</p> <ol style="list-style-type: none"> <li>1 - Education</li> <li>2 - Local Park</li> </ol> |
|----------------------------------------------------------------------------------------------------------------------------------------------------------------------------------------------------------------------------------------------------------------------------------------------------------------------------------------------------------------------------------------------------------------------------------------------------------------------------------------------------------------|-------------------------------------------------------------------------------------------------------------------------------------------------------------------------------------------------------------------------------------------------------------------------------------------------------------------------------------------------------------------------------------------------------------------------------------------------------------------------------------------------------------------------------------------------------------------------------------------------------------------------------------------------------------------------------------------|--------------------------------------------------------------------------------------------------------------------------------------------------------------------------------------------------------------------------------------------------------------------------------------------------------------------------------------------------------------------------------------------------------------------------------------------------------------------------------------------------------------------------------|---------------------------------------------------------------------------------------------------------|





# Campbelltown

## P&D Code Zones - DRAFT

- |                                                  |                                        |                                                |
|--------------------------------------------------|----------------------------------------|------------------------------------------------|
| <b>P&amp;D Code Zones</b>                        | <b>Urban Neighbourhood</b>             | <b>Resilient Communities &amp; Environment</b> |
| <b>Infrastructure &amp; Movement Systems</b>     | <b>Productive Economy - Employment</b> | <b>Hills Face</b>                              |
| <b>People &amp; Neighbourhoods - Residential</b> | <b>Suburban Activity Centre</b>        | <b>Open Space</b>                              |
| General Neighbourhood                            | Suburban Business and Innovation       | Local government boundary                      |
| Suburban Neighbourhood                           | Urban Corridor (Business)              | Cadastre                                       |
| Urban Corridor (Living)                          | Employment                             |                                                |
| Urban Corridor (Main Street)                     | Suburban Employment                    |                                                |

### 2019 Code Consultation Map

- P&D Code Zones Abbreviations**
- CF - Community Facility
  - E - Employment
  - GN - General Neighbourhood
  - HF - Hills Face
  - OS - Open Space
  - SAC - Suburban Activity Centre
  - SBIn - Suburban Business and Innovation
  - SE - Suburban Employment
  - SN - Suburban Neighbourhood
  - UC(Bu) - Urban Corridor (Business)
  - UC(Li) - Urban Corridor (Living)
  - UC(MS) - Urban Corridor (Main Street)
  - UN - Urban Neighbourhood

Produced by Department of Planning, Transport and Infrastructure  
 Planning and Land Use Services  
 GPO Box 1815 Adelaide SA 5001  
 www.sa.gov.au  
 Lambert Conformal Conic  
 30 September 2019

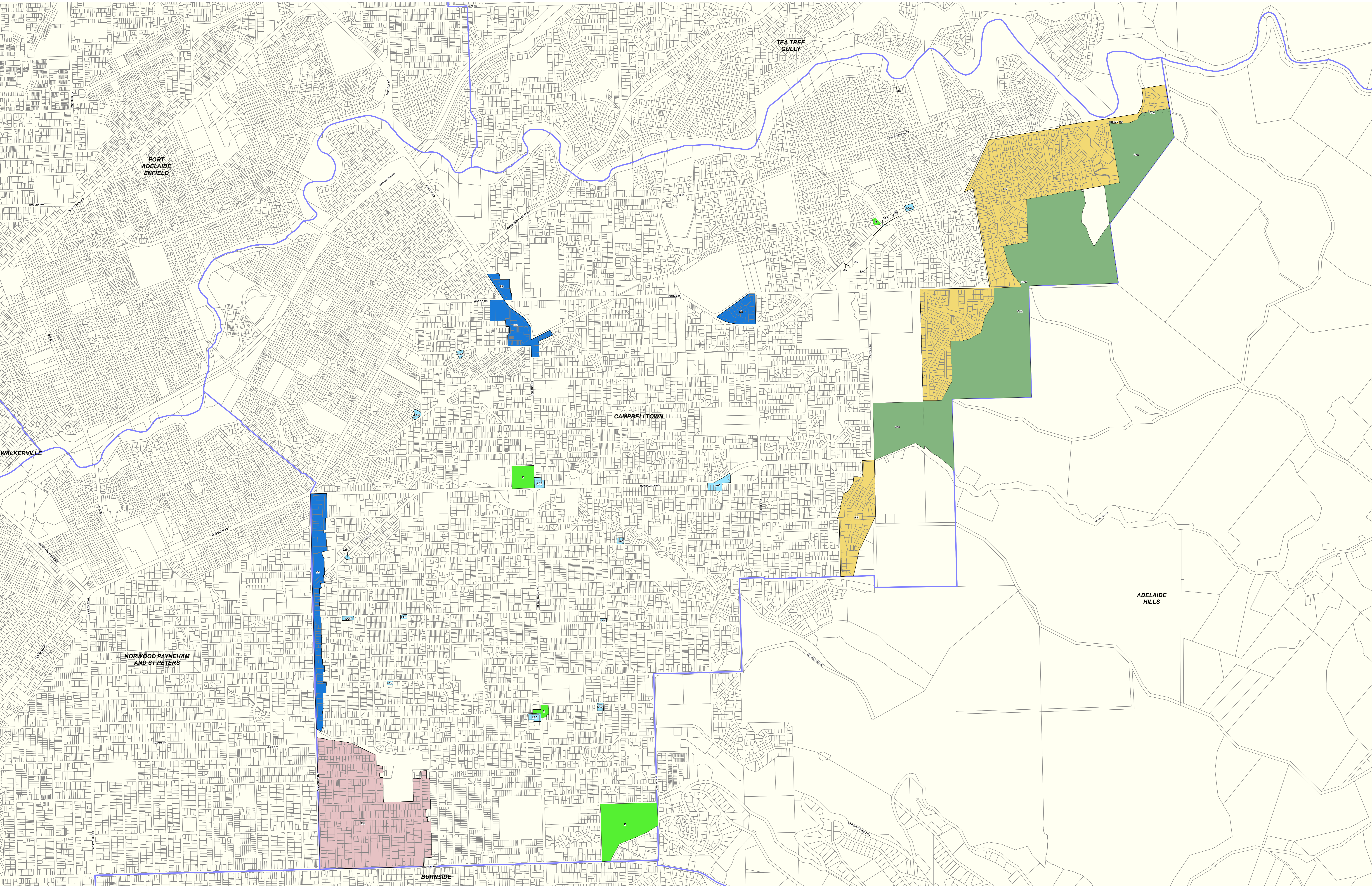
© Government of South Australia 2019  
 No part of this document may be reproduced, stored in a retrieval system, or transmitted in any form or by any means, without the prior written permission of the publisher, Department of Planning, Transport and Infrastructure.

While every reasonable effort has been made to ensure that this document is correct at the time of publication, the State of South Australia and its agencies, institutions, employees and contractors disclaim any and all liability to any person in respect to anything or the consequences of anything done or omitted to be done in reliance upon the whole or any part of this document.

0 220 440 660 metres

Government of South Australia  
 Department of Planning, Transport and Infrastructure  
 PLAN 02 2019





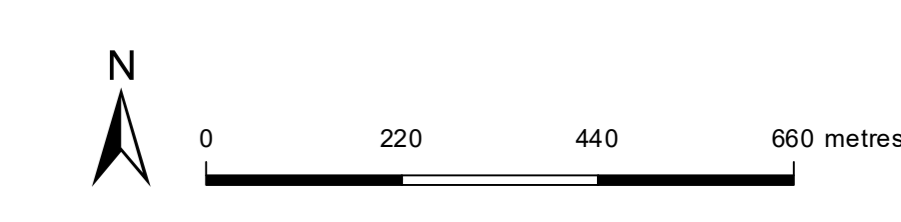
# Campbelltown

**P&D Code Zones - DRAFT**

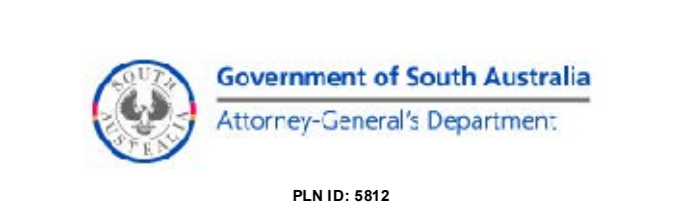
- |                                                  |                                     |
|--------------------------------------------------|-------------------------------------|
| <b>P&amp;D Code Zones</b>                        | Suburban Business                   |
| <b>People &amp; Neighbourhoods - Residential</b> | Employment                          |
| Established Neighbourhood                        | Resilient Communities & Environment |
| General Neighbourhood                            | Conservation                        |
| Hills Neighbourhood                              | Open Space                          |
| <b>Productive Economy - Employment</b>           | Local government boundary           |
| Local Activity Centre                            | Cadastre                            |
| Suburban Activity Centre                         |                                     |

## 2020 Updated Code Consultation Map

Produced by Attorney-General's Department  
 Planning and Land Use Services  
 GPO Box 1815 Adelaide SA 5001  
 www.sa.gov.au  
 Lambert Conformal Conic  
 4 November 2020



© Government of South Australia 2020  
 No part of this document may be reproduced, stored in a retrieval system, or transmitted in any form, or by any means, without the prior written permission of the publisher, the Attorney-General's Department.  
 While every reasonable effort has been made to ensure that this document is correct at the time of publication, the State of South Australia and its agencies, contractors, employees and contractors disclaim any and all liability to any person in respect to existing or the consequences of any thing done or omitted to be done in reliance upon the whole or any part of this document.



PLAN ID: 1812



| Current Development Plan Zone  | Current Development Plan Policy Area    | Current Development Plan Precinct | Consultation November 2019 Code Proposal | Consultation November 2020 Code Proposal | Planning & Design Code Subzone |
|--------------------------------|-----------------------------------------|-----------------------------------|------------------------------------------|------------------------------------------|--------------------------------|
| Commercial                     | Commercial Policy Area 1                |                                   | Suburban Employment                      | Employment                               |                                |
| Commercial                     |                                         |                                   | Suburban Employment                      | Employment                               |                                |
| Community                      |                                         | Precinct 1 Education              | Community Facilities                     | Community Facilities                     |                                |
| Community                      |                                         |                                   | Community Facilities                     | Community Facilities                     |                                |
| District Centre                |                                         |                                   | Suburban Activity Centre                 | Suburban Activity Centre                 |                                |
| Hills Face                     |                                         |                                   | Hills Face                               | Hills Face                               |                                |
| Light Industry                 |                                         |                                   | Suburban Employment                      | Employment                               |                                |
| Local Centre                   |                                         |                                   | Suburban Activity Centre                 | Local Activity Centre                    |                                |
| Metropolitan Open Space System | Linear Park River Torrens Policy Area 2 |                                   | Open Space                               | Open Space                               |                                |
| Metropolitan Open Space System |                                         |                                   | Open Space                               | Open Space                               |                                |
| Mixed Use                      |                                         |                                   | Suburban Business and Innovation         | Suburban Business                        |                                |
| Neighbourhood Centre           |                                         |                                   | Suburban Activity Centre                 | Suburban Activity Centre                 |                                |
| Residential                    | Regeneration Policy Area 3              |                                   | General Neighbourhood                    | General Neighbourhood                    |                                |
| Residential                    | Suburban Policy Area 4                  |                                   | General Neighbourhood                    | General Neighbourhood                    |                                |
| Residential                    | Leabrook Drive Policy Area 10           |                                   | Suburban Neighbourhood                   | Suburban Neighbourhood                   |                                |
| Residential                    | Foothills Policy Area 6                 |                                   | Suburban Neighbourhood                   | Hills Neighbourhood                      |                                |
| Residential                    | Low Density Policy Area 7               |                                   | Suburban Neighbourhood                   | Established Neighbourhood                |                                |
| Suburban Activity Node         |                                         |                                   | Urban Neighbourhood                      | Urban Neighbourhood                      |                                |
| Urban Corridor                 | Business Policy Area 8                  |                                   | Urban Corridor (Business)                | Urban Corridor (Business)                |                                |
| Urban Corridor                 | Transit Living Policy Area 9            |                                   | Urban Corridor (Living)                  | Urban Corridor (Living)                  |                                |

| Current Development Plan Zone | Current Development Plan Policy Area | Current Development Plan Precinct | Consultation November 2019 Code Proposal | Consultation November 2020 Code Proposal | Planning & Design Code Subzone |
|-------------------------------|--------------------------------------|-----------------------------------|------------------------------------------|------------------------------------------|--------------------------------|
| Urban Corridor                | High Street Policy Area 10           |                                   | Urban Corridor (Main Street)             | Urban Corridor (Main Street)             |                                |
| Urban Employment              |                                      |                                   | Employment                               | Employment                               |                                |