

Mitcham Development Plan Map

- Commercial
- Community Facilities
- Environmental Constraint
- Heritage
- Industrial
- Miscellaneous
- Open Space
- Primary Production / Mining
- Recreation
- Residential
- Development Plan
- Zoning
- Policy Area
- Local government boundary
- Cadastre

Produced by Department of Planning, Transport and Infrastructure
 Planning Division
 GPO Box 1815 Adelaide SA 5001
 www.sa.gov.au
 Lambert Conformal Conic
 Projection
 Completed 11 June 2020

© Government of South Australia 2017
 No part of this document may be reproduced, stored in a retrieval system, or transmitted in any form, or by any means, without the prior written permission of the publisher, Department of Planning, Transport and Infrastructure.

While every reasonable effort has been made to ensure that this document is correct at the time of publication, the State of South Australia and its agencies, representatives, employees and contractors disclaim any and all liability in respect to anything or the consequences of anything done or omitted to be done in reliance upon the whole or any part of this document.

0 340 680 1020 metres

Department of Planning, Transport and Infrastructure
PLN ID: 5446

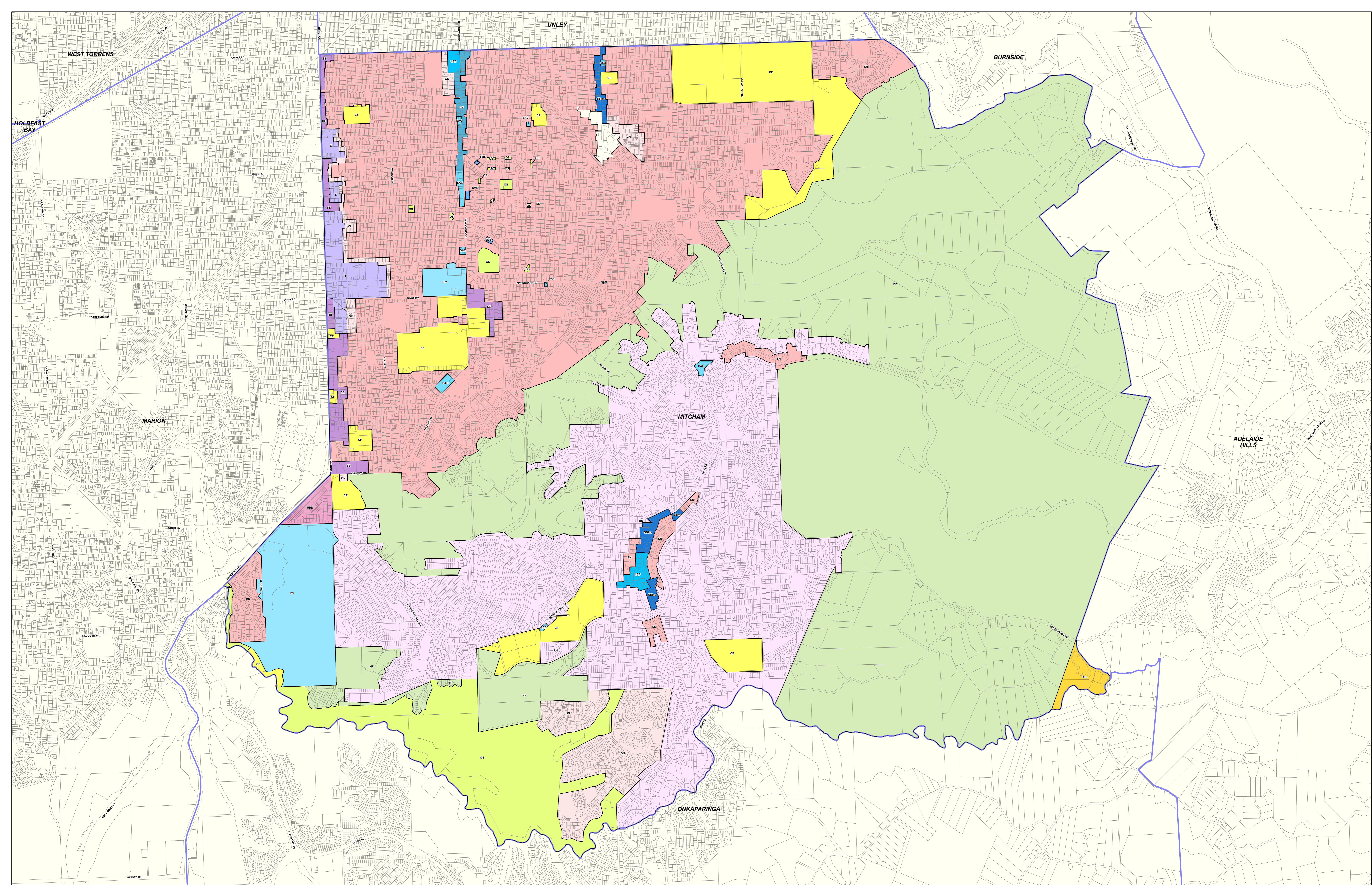
- Zoning**
- C - Commercial
 - LBU - Local Business
 - LCC - Local Centre
 - CIHR - Commercial (Main Road)
 - CSHR - Commercial (South Road)
 - CL - Country Living
 - CP - Caravan and Tourist Park
 - CU - Community
 - DC - District Centre
 - DE - Defence Establishment
 - GI - General Industry
 - HCBV - Historic (Conservation) - Barial Village
 - HCOMV - Historic (Conservation) - Mitcham Village
 - HF - Hills Face
 - I - Institutional
 - R - Residential

- IC(Me) - Industry/Commerce (Metkose Park)
- LC - Local Centre
- LI - Light Industry
- MOS(Rec) - Metropolitan Open Space System (Recreation)
- MR - Mixed Residential
- MU - Mixed Use
- MU(BR) - Mixed Use (Bair Road)
- MU(GR) - Mixed Use (Goodwood Road)
- MU2 - Mixed Uses 2
- MU3 - Mixed Uses 3
- NCC - Neighbourhood Centre
- OS - Open Space
- PP - Public Purpose
- PP(Pr) - Primary Production
- R - Residential

- RB(U) - Residential (Blackwood Urban)
- RB(P) - Residential (Central Plains)
- RB(G) - Residential (Cragburn)
- RE(P) - Residential (East Plains)
- RF - Residential (Footbills)
- RH - Residential (Hills)
- RA - Regional Activity
- RB200 - Residential B200
- RB250 - Residential B250
- RB300 - Residential B300
- RB350 - Residential B350
- RC - Residential Character
- RCe - Regional Centre
- RH - Residential Hills
- RHC - Residential Historic Conservation
- RP - Residential Park

- RR - Residential Regeneration
- RS(BP) - Residential Streetscape (Bair Farm)
- RS(L) - Residential Streetscape (Landscapes)
- RA(L) - Residential (Marphetteville)
- Ru(L) - Rural Landscapes
- SAN - Suburban Activity Node
- SH(CLG) - State Heritage Area (Colonel Light Gardens)
- SU - Special Use
- SU - Special Uses (Hawthorn Oval)
- SU - Special Uses (Goodwood Oval)
- SU - Special Uses (Parther Park)
- TA - Tourist Accommodation
- UC - Urban Core
- UC - Urban Corridor
- WPP - Watered (Primary Production) zone

- Policy Area**
- 1 - Major Public Parks
 - 1 - Policy Area 1 - Residential
 - 10 - Residential (Central Plains) Policy Area 10
 - 11 - Residential (Central Plains) Policy Area 11
 - 12 - Residential (Central Plains) Policy Area 12
 - 13 - Industry/Commerce Interface Policy Area 13
 - 14 - District Centre Fringe Policy Area 14
 - 15 - Residential (Central Plains) Historic (Conservation) Policy Area 15
 - 17 - Aley Road Historic (Conservation) Policy Area 17
 - 2 - Internal Reserves
 - 2 - Policy Area 2 - Residential Deferred (until 30/6/09)
 - 3 - Local Shopping Precincts
 - 3 - Policy Area 3 - Open Space (Recreation)
 - 4 - Policy Area 4 - Open Space (Farming until Area 2 developed)
 - 5 - Policy Area 5 - Open Space (Farming up to 2022)
 - 6 - Policy Area 6 - Open Space for immediate addition to Start Gorge Recreation Park
 - 7 - Residential (East Plains) Policy Area 7
 - 8 - Residential (Central Plains) Policy Area 8
 - 9 - Residential (Central Plains) Policy Area 9
 - E - Policy Area E - Metkose Core Activity Enclave



Mitcham

P&D Code Zones - DRAFT

- P&D Code Zones**
- Infrastructure & Movement Systems**
- Community Facilities
- People & Neighbourhoods - Residential**
- General Neighbourhood
- Residential Neighbourhood
- Suburban Neighbourhood
- Urban Renewal Neighbourhood
- People & Neighbourhoods - Rural**
- Rural Living
- Productive Economy - Employment**
- Innovation
- Suburban Activity Centre
- Business Neighbourhood
- Suburban Business and Innovation
- Suburban Main Street
- Resilient Communities & Environment**
- Hills Face
- Open Space
- Urban Activity Centre
- Employment
- Suburban Employment
- Local government boundary
- Cadastral

2019 Code Consultation Map

- P&D Code Zones Abbreviations**
- BN - Business Neighbourhood
- CF - Community Facilities
- E - Employment
- GN - General Neighbourhood
- HF - Hills Face
- IN - Innovation
- OS - Open Space
- PH - Residential Neighbourhood
- RL - Rural Living
- SAC - Suburban Activity Centre
- SBIN - Suburban Business and Innovation
- SE - Suburban Employment
- SMS - Suburban Main Street
- SN - Suburban Neighbourhood
- UAC - Urban Activity Centre
- URN - Urban Renewal Neighbourhood

Produced by Department of Planning, Transport and Infrastructure
 Planning and Land Use Services
 GPO Box 1815 Adelaide SA 5001
www.sa.gov.au
 Lambert Conformal Conic
 30 September 2019

Projection
 Compiled

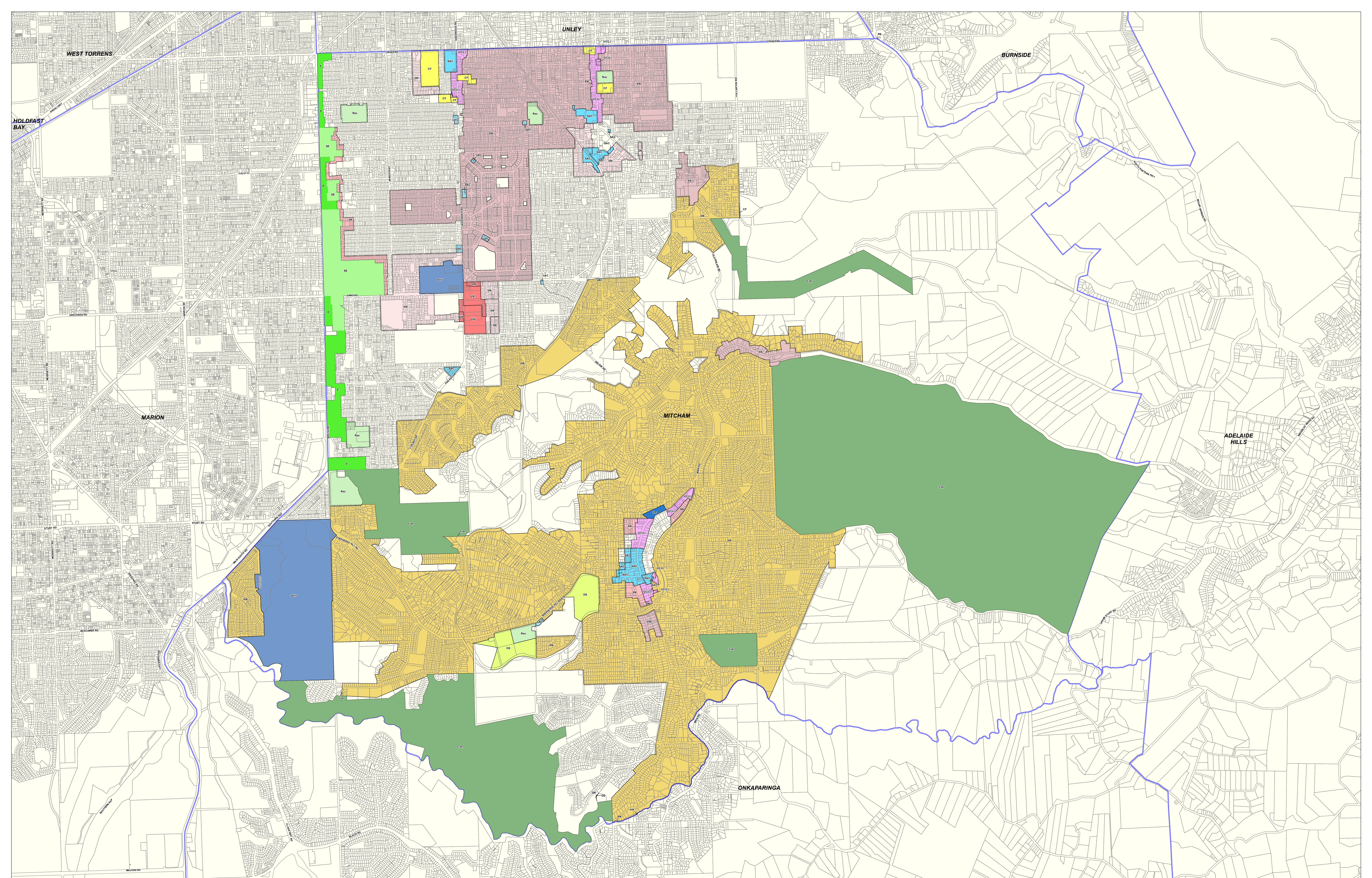
© Government of South Australia 2019
 No part of this document may be reproduced, stored in a retrieval system, or transmitted in any form or by any means, without the prior written permission of the publisher, Department of Planning, Transport and Infrastructure.

While every reasonable effort has been made to ensure that this document is correct at the time of publication, the State of South Australia and its agencies, institutions, employees and contractors disclaim any and all liability to any person in respect to anything or the consequences of anything done or omitted to be done in reliance upon the whole or any part of this document.

N

0 340 680 1020 metres

Government of South Australia
 Department of Planning,
 Transport and Infrastructure
 PLAN ID: 3912



Mitcham

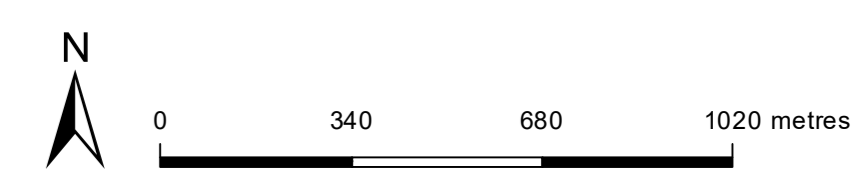
P&D Code Zones - DRAFT

P&D Code Zones	Productive Economy - Employment	Infrastructure & Movement Systems
<ul style="list-style-type: none"> Established Neighbourhood General Neighbourhood Hills Neighbourhood Suburban Neighbourhood Urban Corridor (Living) Urban Neighbourhood 	<ul style="list-style-type: none"> Local Activity Centre Strategic Innovation Suburban Activity Centre Suburban Business Employment Strategic Employment 	<ul style="list-style-type: none"> Community Facilities Resilient Communities & Environment Conservation Open Space Recreation Local government boundary Cadastre

2020 Updated Code Consultation Map

Produced by
 Attorney-General's Department
 Planning and Land Use Services
 GPO Box 1815 Adelaide SA 5001
 www.sa.gov.au
 Lambert Conformal Conic
 4 November 2020

Projection
 Completed
 © Government of South Australia 2020
 No part of this document may be reproduced, stored in a retrieval system, or transmitted in any form, or by any means, without the prior written permission of the publisher, the Attorney-General's Department.
 While every reasonable effort has been made to ensure that this document is correct at the time of publication, the State of South Australia and its agencies, representatives, employees and contractors disclaim any and all liability to any person in respect to existing or the consequences of any thing done or omitted to be done in reliance upon the whole or any part of this document.



Current Development Plan Zone	Current Development Plan Policy Area	Current Development Plan Precinct	Consultation November 2019 Code Proposal	Consultation November 2020 Code Proposal	Planning & Design Code Subzone
Commercial (Coromandel Parade)			Suburban Business and Innovation	Suburban Business	
Commercial (Main Road)			Suburban Business and Innovation	Suburban Business	
Commercial (South Road)			Suburban Employment	Employment	
District Centre			Suburban Activity Centre (Lower Mitcham) Urban Activity Centre (Westbourne Park, Blackwood)	Suburban Activity Centre	
General Industry			Employment	Strategic Employment	
Hills Face			Hills Face	Hills Face	
Historic (Conservation) - Belair Village			Suburban Neighbourhood	Established Neighbourhood	
Historic (Conservation) - Mitcham Village			Suburban Neighbourhood	Established Neighbourhood	
Industry/Commerce (Melrose Park)	District Centre Fringe Policy Area 14		Employment	Employment	
Industry/Commerce (Melrose Park)	Industry/Commerce Interface Policy Area 13		Employment	Strategic Employment	
Industry/Commerce (Melrose Park)			Employment	Strategic Employment	
Institutional			Community Facilities	Community Facilities Recreation Zone Open Space Zone	
Light Industry			Suburban Employment	Employment Urban Neighbourhood General Neighbourhood <i>*Note: Area was subject to Growth Precincts DPA</i>	
Local Centre			Suburban Activity Centre	Local Activity Centre	
Metropolitan Open Space System (Recreation)	Policy Area 3 - Open Space (Recreation)		Open Space	Open Space	
Metropolitan Open Space System (Recreation)	Policy Area 4 - Open Space (Farming until Area 2 developed)		Open Space	Open Space	

Current Development Plan Zone	Current Development Plan Policy Area	Current Development Plan Precinct	Consultation November 2019 Code Proposal	Consultation November 2020 Code Proposal	Planning & Design Code Subzone
Metropolitan Open Space System (Recreation)	Policy Area 5 - Open Space (Farming up to 2002)		Open Space	Open Space	
Metropolitan Open Space System (Recreation)	Policy Area 6 - Open Space for immediate addition to Sturt Gorge Recreation Park.		Open Space	Open Space	
Metropolitan Open Space System (Recreation)			Open Space	Open Space	
Mixed Use			Innovation Zone – Rehabilitation Subzone	Strategic Innovation	Repatriation Facilities
Mixed Use (Belair Road)			Suburban Business and Innovation	Urban Corridor (Living) <i>*Note: Area was subject to Growth Precincts DPA</i>	
Mixed Use (Goodwood Road)			Business Neighbourhood	Business Neighbourhood (part) Urban Corridor (Living) (part) <i>*Note: Area was subject to Growth Precincts DPA</i>	
Neighbourhood Centre			Suburban Activity Centre	Suburban Activity Centre	
Open Space			Open Space	Open Space	
Regional Activity			Innovation	Strategic Innovation	Flinders
Residential (Blackwood Urban)			Suburban Neighbourhood	Suburban Neighbourhood	
Residential (Central Plains)	Residential (Central Plains) Historic (Conservation) Policy Area 15		Suburban Neighbourhood	Established Neighbourhood	
Residential (Central Plains)	Residential (Central Plains) Policy Area 10		Suburban Neighbourhood	Suburban Neighbourhood	
Residential (Central Plains)	Residential (Central Plains) Policy Area 11			General Neighbourhood	
Residential (Central Plains)	Residential (Central Plains) Policy Area 12		Suburban Neighbourhood	Suburban Neighbourhood	
Residential (Central Plains)	Residential (Central Plains) Policy Area 8		Suburban Neighbourhood	Suburban Neighbourhood	
Residential (Central Plains)	Residential (Central Plains) Policy Area 9		Suburban Neighbourhood	Established Neighbourhood	
Residential (Craigburn)	Policy Area 1 - Residential		General Neighbourhood	General Neighbourhood	

Current Development Plan Zone	Current Development Plan Policy Area	Current Development Plan Precinct	Consultation November 2019 Code Proposal	Consultation November 2020 Code Proposal	Planning & Design Code Subzone
Residential (Craigburn)	Policy Area 2 - Residential Deferred (until 30/6/99)		General Neighbourhood	General Neighbourhood	
Residential (Craigburn)	Policy Area E - Minda Core Activity Enclave		General Neighbourhood	General Neighbourhood	
Residential (East Plains)	Residential (East Plains) Policy Area 7		Suburban Neighbourhood	Suburban Neighbourhood	
Residential (East Plains)			Suburban Neighbourhood	Suburban Neighbourhood	
Residential (Foothills)			Suburban Neighbourhood	Hills Neighbourhood	
Residential (Hills)	Adey Road Historic (Conservation) Policy Area 17		Suburban Neighbourhood	Established Neighbourhood	
Residential (Hills)			Residential Neighbourhood	Hills Neighbourhood	
Rural (Landscape)			Rural Living	Rural Living	
Special Use			Community Facilities	Community Facilities	
Special Uses (Hawthorn Oval)			Community Facilities	Recreation	
Special Uses (Kingswood Oval)			Community Facilities	Recreation	
Special Uses (Panther Park)			Community Facilities	Recreation	
State Heritage Area (Colonel Light Gardens)	Internal Reserves		Open Space	Open Space	
State Heritage Area (Colonel Light Gardens)	Local Shopping Precincts		Suburban Main Street	Local Activity Centre	
State Heritage Area (Colonel Light Gardens)	Major Public Parks		Open Space	Open Space	
State Heritage Area (Colonel Light Gardens)			Suburban Neighbourhood	Established Neighbourhood	
Suburban Activity Node			Urban Renewal Neighbourhood	Urban Renewal Neighbourhood	