

Open Space Grant Program

Laneways, Main Streets, Civic Plazas and Reimagined Public Spaces

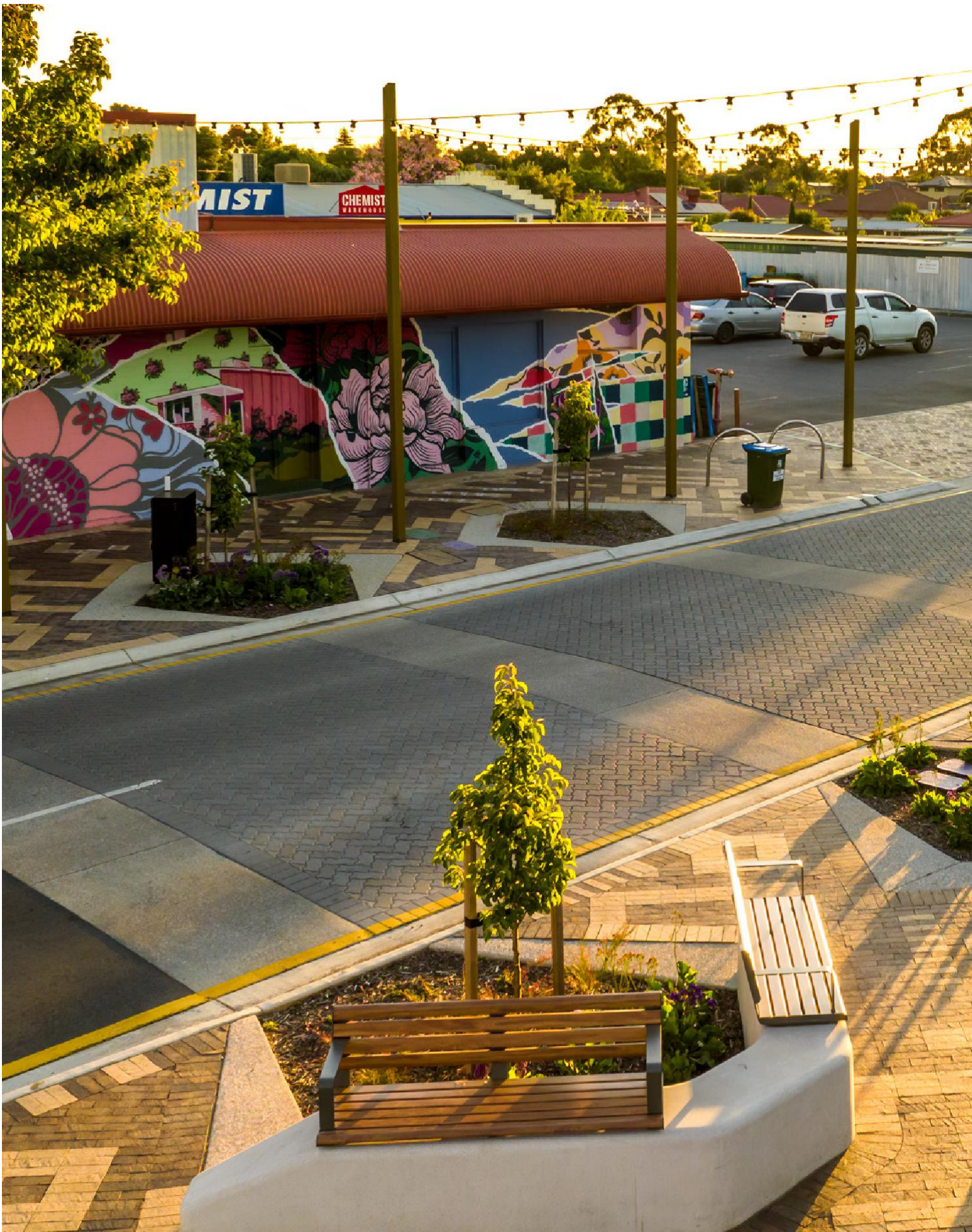
Summary Sheets | Published May 2024

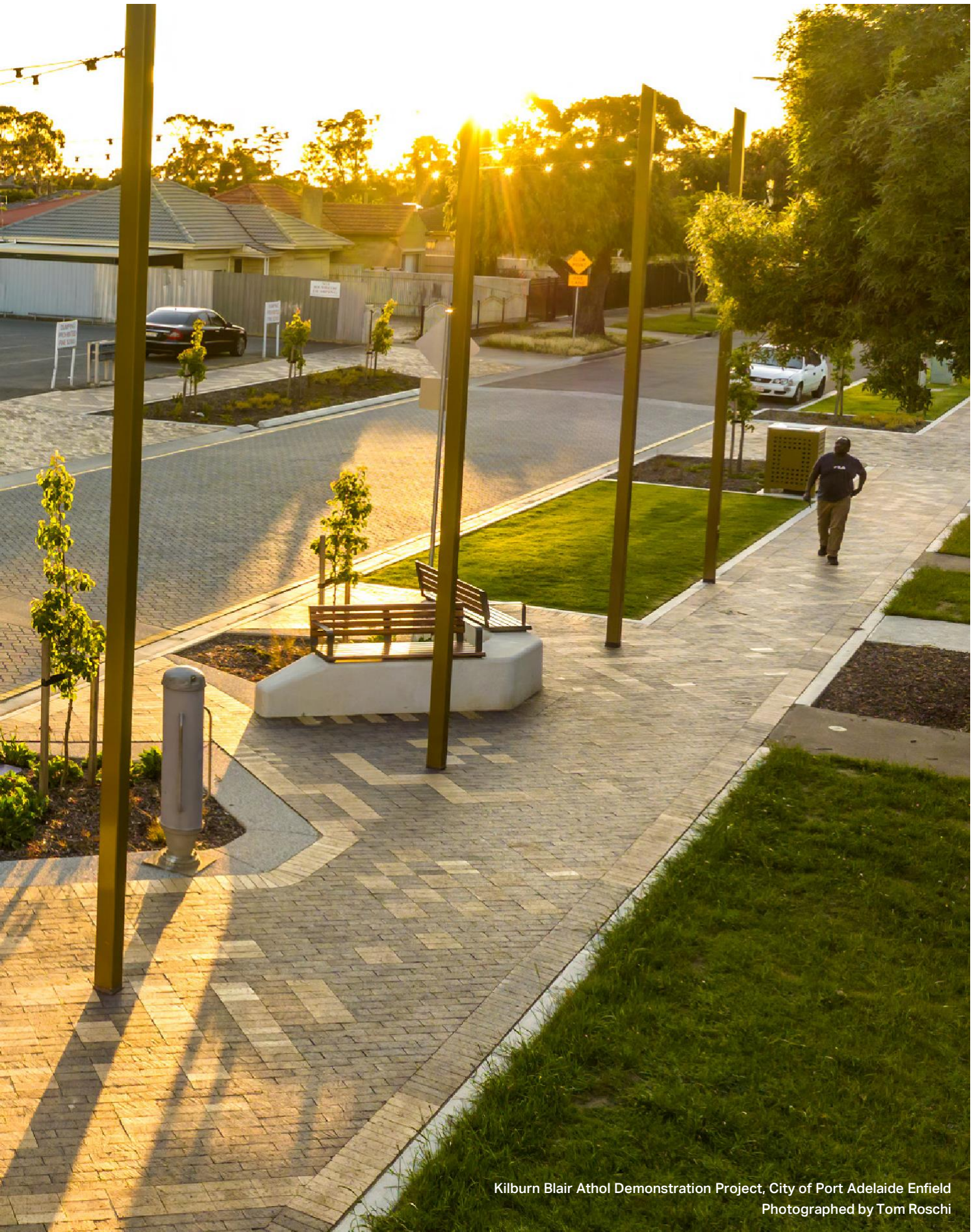
OFFICE FOR
DESIGN+
ARCHITECTURE SA



Government of South Australia
Department for Trade
and Investment







Kilburn Blair Athol Demonstration Project, City of Port Adelaide Enfield
Photographed by Tom Roschi





Acknowledgement of Country

The Office for Design and Architecture SA would like to acknowledge Kurna Miyurna as the Traditional Custodians of the Adelaide Plains region where our office is located.

We pay our respect to Kurna Elders - past, present and emerging.

We would also like to acknowledge the Traditional Custodians of the lands and waters across South Australia and recognise their ongoing spiritual connection to Country.

Project Summary Sheets

Open Space Grant Program - Laneways, Main Streets, Civic Plazas and Reimagined Public Spaces

© Government of South Australia. Published December 2023. All rights reserved.

While every reasonable effort has been made to ensure that this document is correct at the time of publication, the Minister for Planning, the State of South Australia, its agencies, instrumentalities, employees and contractors disclaim any and all liability to any person in respect to anything or the consequence of anything done or omitted to be done in reliance upon the whole or any part of this document.

Contents

- 8 **Activating Hawthorn’s Hidden Gem**
City of Mitcham
- 10 **Waite Street Reserve Upgrade**
City of Mitcham
- 12 **Celebrating Port Wakefield’s Cultural
Connection – Edward Street**
Wakefield Regional Council
- 15 **Barossa Creative Industries Centre -
External Open Space Component**
The Barossa Council

Activating Hawthorn's Hidden Gem

City of Mitcham
Kairua Country

The State Government is committed to investing in open space and public realm across South Australia, by supporting projects led by local government. Activating Hawthorn's Hidden Gem Project received funding in the 2023-24 Open Space Grant Program, financed through the Planning and Development Fund.

Project Type Reimagined Public Space
Project Location 2/150 Belair Road, Hawthorn

Cost and Funding Summary

Contribution Source	Amount (ex GST)
Council Contribution	\$657,850
Grant Contribution	\$500,000
Other Contribution	\$0
Total Project Cost	\$1,157,850

Project Description

The Activating Hawthorn's Hidden Gem project will reimagine the unused bowling greens and Air Force Association buildings. The project will create an important place for community connection, creating a new public plaza and open space designed to reflect the natural environment and site history.

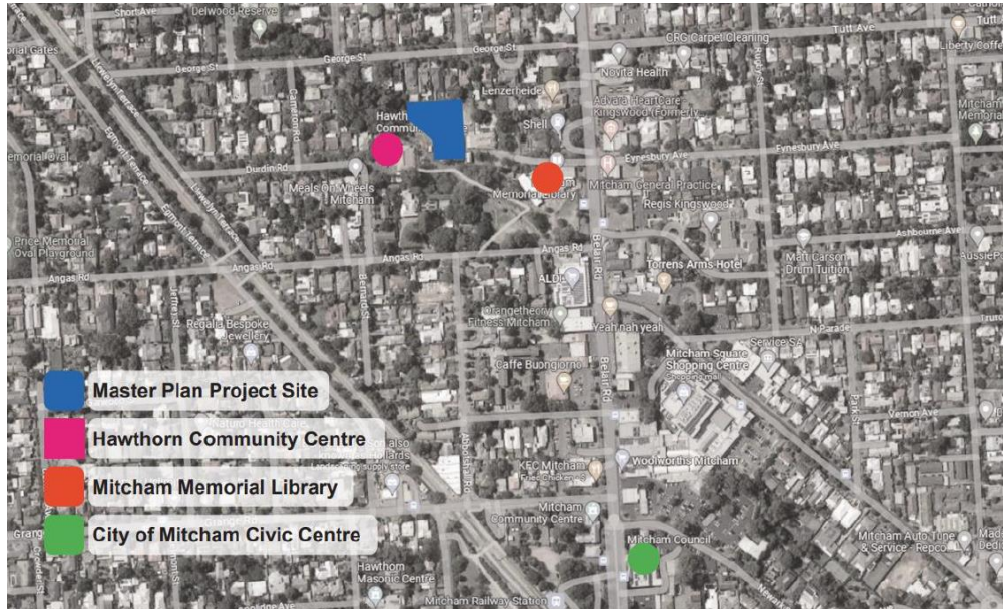
Key elements of the project include:

- Demolition of old buildings to open the site to the community
- Native planting buffer
- Landscaping, lawns and garden beds
- Infrastructure improvements including lighting and drainage
- Furniture including shelters, BBQs, benches, bicycle racks
- Footpaths and pavements

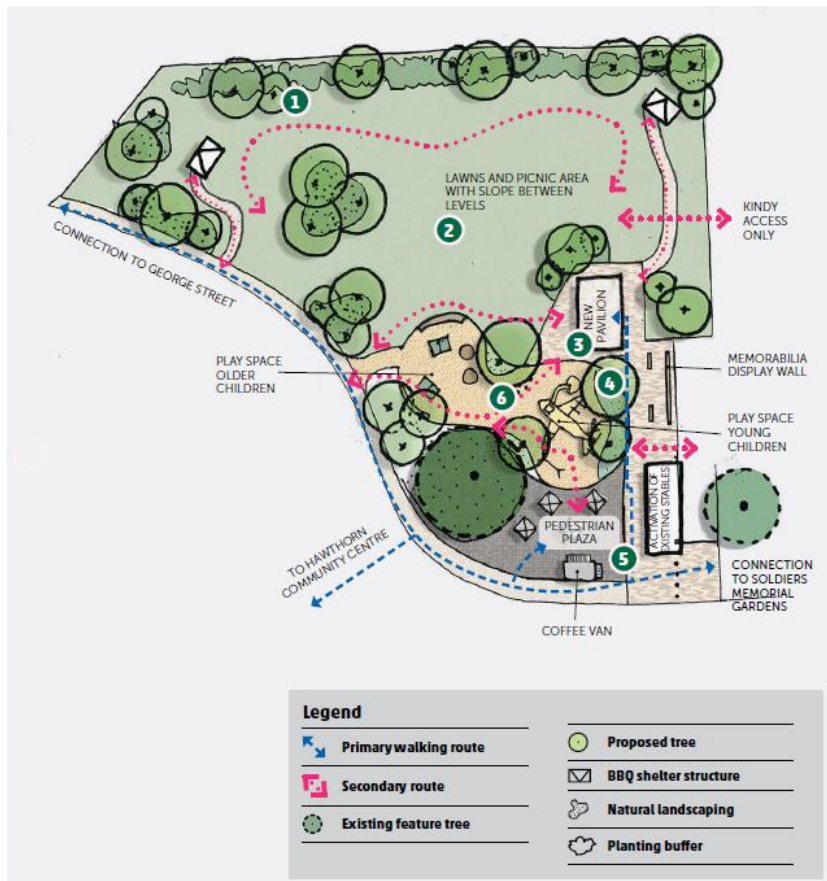
Activating Hawthorn's Hidden Gem

City of Mitcham
Karna Country

Location Plan



Concept Plan



Waite Street Reserve Upgrade

City of Mitcham
Karna Country

The State Government is committed to investing in open space and public realm across South Australia, by supporting projects led by local government. Activating Hawthorn's Hidden Gem Project received funding in the 2023-24 Open Space Grant Program, financed through the Planning and Development Fund.

Project Type Reimagined Public Space
Project Location Waite Street Reserve, Blackwood

Cost and Funding Summary

Contribution Source	Amount (ex GST)
Council Contribution	\$902,198
Grant Contribution	\$400,000
Other Contribution	\$847,802
Total Project Cost	\$2,150,000

Project Description

Tiwu Kumangka, a new library and community centre has recently opened in Blackwood. Council have planned for the rejuvenation of the broader area and creation of the heart and centre of activity and community connection in Blackwood including the Waite Street Reserve.

Key elements of the project include:

- Upgraded playground and youth recreation area
- Park furniture
- Events infrastructure including power and water
- Lighting
- Landscaping, tree planting and irrigated lawn area

Waite Street Reserve Upgrade

City of Mitcham
Karna Country

Location Plan



Concept Plan



- KEY**
1. Blackwood Hub
 2. Kitchen Garden
 3. Feature Paving
 4. Irrigated Lawn
 5. Existing Play Space
 6. New Play Space
 7. Screen Planting
 8. Shelter with Picnic Setting & BBQ
 9. New Car Park
 10. Youth Area with Basketball Half Court
 11. Historic Wall Preserved
 12. New Street Tree Planting
 13. Rock Climbing Structure
 14. Exposed Aggregate Concrete Path
 15. Existing Paved Path
 16. Maintenance Vehicle Access
 17. Bench Seat
 18. Gravel Path
 19. Building Entry
 20. Stage/Events with Power Outlets
- Existing Tree to be Retained
● Proposed Tree

Celebrating Port Wakefield's Cultural Connection - Edward Street

Wakefield Regional Council
Kaurna and Narungga Country

The State Government is committed to investing in open space and public realm across South Australia, by supporting projects led by local government. Activating Hawthorn's Hidden Gem Project received funding in the 2023-24 Open Space Grant Program, financed through the Planning and Development Fund.

Project Type Main Street
Project Location Edward Street, Port Wakefield

Cost and Funding Summary

Contribution Source	Amount (ex GST)
Council Contribution	\$500,000
Grant Contribution	\$500,000
Other Contribution	\$600,000
Total Project Cost	\$1,600,000

Project Description

The revitalisation of Edward Street will create a new defined town centre for Port Wakefield, featuring lighting, Indigenous art trail, greened streetscape and improved accessibility. This project forms part of a wider \$3.9 million project to celebrate Port Wakefield cultural history, draw more visitors into the township, deliver improved facilities for residents and visitors and promote regional tourist attractions across regional South Australia.

All of these activities will support planned residential housing and population growth by improving amenities and liveability in the township.

Key elements of the Stage 2 project include:

- Edward Street revitalisation including roads, footpaths and paved areas
- Landscaping
- Infrastructure improvements including stormwater and electrical
- Indigenous Art Trail and associated signage

Celebrating Port Wakefield's Cultural Connection - Edward Street

Wakefield Regional Council
Kaurua and Narungga Country

Location Plan



- Land within project scope either Council-owned, under the care and control of Council or Council-owned road reserve.
- Land within project scope owned by the Department of Environment awaiting approval to dredge and replace existing bridge structure.

Concept Plan



LEGEND

- | | | | |
|---|---|---|---|
| <ul style="list-style-type: none"> ① Town Centre
The activated heart of Port Wakefield will include feature lighting, planted kerb build outs, feature paving on the road way and on the footpaths. ② Retained Existing Trees
All existing street trees will be retained. ③ Main Trees (Feature)
Each Intersection will be celebrated with a large feature tree that will begin to create a rhythm, along the street. | <ul style="list-style-type: none"> ④ Secondary Tree (Infill)
Infill street tree and understory planting will be installed along the street to help soften, reduce the scale (pedestrian scale) and the Urban Heat Island Effect. ⑤ Art Nodes
Each intersection will feature art work that tells the story of Port Wakefield. ⑥ New Ramps
Where existing Ramps are non-compliant these will be demolished and removed to become compliant ramps. | <ul style="list-style-type: none"> ⑦ New Paved Path to Foreshore
New paving will be installed from the Town Centre to the Foreshore. ⑧ Feature Paved Threshold
New paving to the entry of Edward Street will provide a sense of arrival and bookend the revitalised streetscape. ⑨ Feature Signage and Art Work
Entry Signage and Artwork will be strategically placed to provide maximum views to the Highway. This will ensure that all passers-by are intrigued to investigate whats down the main street. | <p>Note: All existing Driveways, Light Poles and Overhead Power Lines are retained</p> |
|---|---|---|---|

Celebrating Port Wakefield's Cultural Connection - Edward Street

Wakefield Regional Council
Kurna and Narungga Country

Visualisation (Artist Illustration)



Barossa Creative Industries Centre - External Open Space Component

The Barossa Council

Kaurna, Ngadjuri, Peramangk

The State Government is committed to investing in open space and public realm across South Australia, by supporting projects led by local government. Activating Hawthorn's Hidden Gem Project received funding in the 2023-24 Open Space Grant Program, financed through the Planning and Development Fund.

Project Type	Reimagined Public Space
Project Location	Barossa Regional Gallery, 3 Basedow Road

Cost and Funding Summary

Contribution Source	Amount (ex GST)
Council Contribution	\$2,201,766
Grant Contribution	\$500,000
Other Contribution	\$0
Total Project Cost	\$2,701,766

Project Description

The Barossa Council is repurposing the historic Barossa Regional Gallery, developing a landmark Barossa Creative Industries Centre (BCIC). This project will transform a disused but strategically important parcel of land in the urban centre and will support the surrounding residential infill and business precinct. Bespoke place-making elements individually and collectively will create an immersive environment where people meet, play, connect and engage creatively with their surroundings.

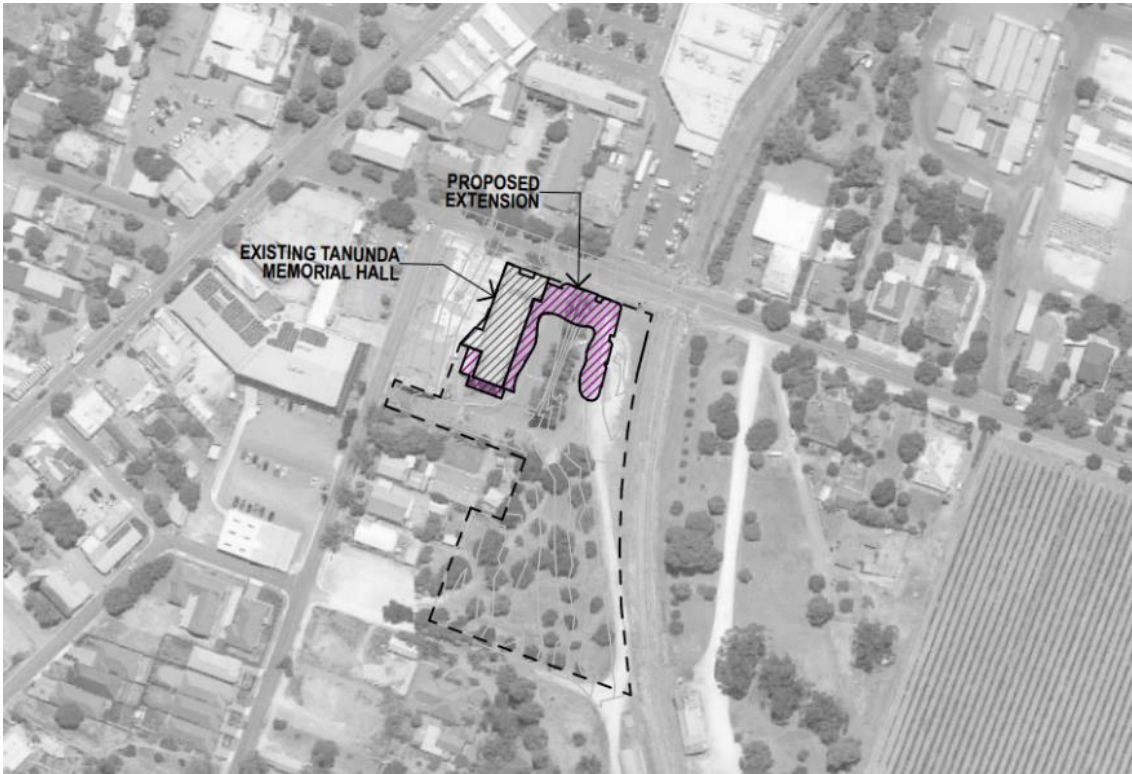
Key elements of the project include:

- Activated courtyard space hosting outdoor workshops, markets, exhibitions, events and community activities
- Formal outdoor performance stage - "The Valley of Song"
- Causal/impromptu performance areas
- Interpretive landscape with 'story nodes' and gazebo - "The Valley of Dreams"
- Landscaping inspired by natural elements: stone/basket walls, seating and indigenous plantings
- Sensory trails, connecting pathways
- Safety in design with lighting/wayfinding/parking

Barossa Creative Industries Centre - External Open Space Component

The Barossa Council
Karna, Ngadjuri, Peramangk

Location Plan



Concept Plan





Walker Place, Town of Gawler, Constructed by Blu Built Constructions
Photograph by Sweet Lime Photo



Kilburn Blair Athol Demonstration Project, City of Port Adelaide Enfield
Photographed by Tom Roschi

