

North-South Corridor Darlington Upgrade Project Newsletter

September 2019



Ayliffes Road bridge in foreground with Sutton Road/Mimosa Terrace, Sturt Road and Flinders Drive bridges in background, looking south

Project update

Another major milestone was achieved on the Darlington Upgrade Project in late July, with the new lowered motorway and the Main South Road bridge to the lowered motorway opened to traffic.

Northbound and southbound Main South Road motorists are now able to use the lowered motorway to travel to and from the Southern Expressway, reducing travel times by passing underneath newly constructed bridges at Sutton Road/Mimosa Terrace, Sturt Road and Flinders Drive.

The Tonsley bridge recently became fully operational, providing easier access to Tonsley Boulevard.

A further major achievement is expected to be reached later this month as the new Ayliffes Road bridge opens to northbound traffic.

As we get closer to the end of the year, the lowered motorway underneath the new Tonsley Boulevard Bridge will be completed and the Sturt Road/Main South Road intersection will be aligned into its final configuration.

Works will also commence in the coming months to construct the Main South Road surface roads in their permanent arrangements.



Australian Government

BUILDING OUR FUTURE



Government
of South Australia

Department of Planning,
Transport and Infrastructure



Tonsley Boulevard bridge, looking north



Aerial view of new Main South Road bridges over the Southern Expressway, looking north east



Aerial view of Ayliffes Road bridge, with off-ramp under construction, looking east

Landscaping

Landscaping is integral to the Darlington Upgrade Project, with approximately 86,000 plants being planted throughout the project site.

The plants are a mixture of semi-mature and tube stock plantings that will introduce layers of greenery and colour throughout the road corridor and adjacent pathways.

Plantings are already complete in many locations and the remainder will continue to be undertaken between now and project completion.

We are grateful to local community group Friends of Warriparinga who donated seeds from plants within the Warriparinga wetlands to the project team. The seeds were then propagated by Greening Australia and more than 1,400 plants were produced and then used in landscaping in adjacent public open spaces.



Landscaping is integral to the Darlington Upgrade Project

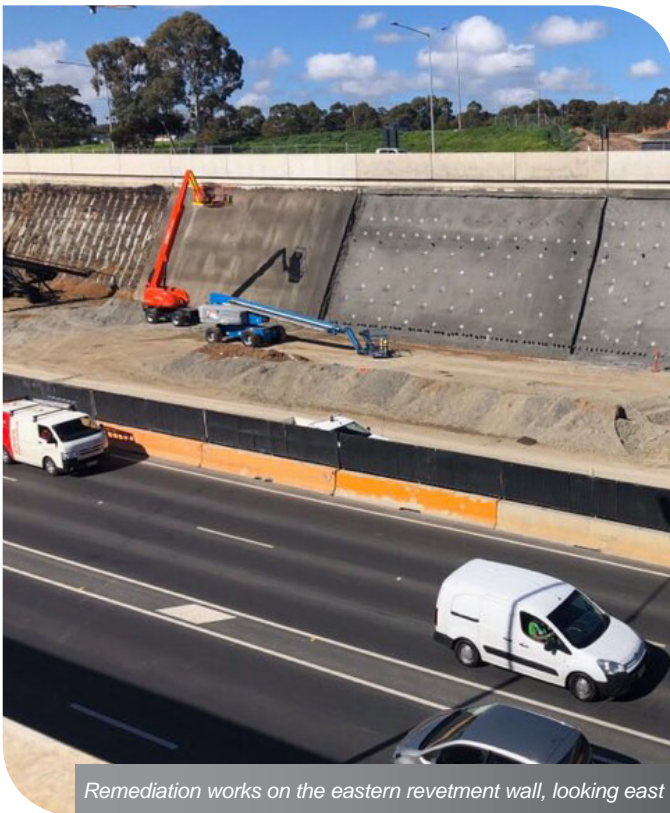
Key Milestones

Upcoming in 2019

- Ayliffes Road bridge opens to traffic
- Sutton Road/Mimosa Terrace bridge fully open to traffic
- Main South Road surface roads in final configuration (two lanes in each direction)
- Landscaping (ongoing)
- Construction of shared use paths

Upcoming in 2020

- Complete remaining sections of lowered motorway
- Complete surface roads final asphalt
- Open Flinders Drive Extension to traffic
- Birch Crescent and Sturt Road traffic signals
- Project completion mid 2020



Remediation works on the eastern revetment wall, looking east

Cyclist and pedestrian access

More than five kilometres of shared use paths will be constructed as part of the Darlington Upgrade Project.

The separated, two-way cycling paths and footpaths within the project corridor will enhance pedestrian and cyclist access to services, facilities and public transport, as well as provide for cyclist commuters travelling through the area.

The cyclist paths will connect to the Patrick Jonker Veloway and the proposed Greenway adjacent to the Tonsley Rail line.

Three rest stops will also be incorporated into the project area and will include features such as wayfinding signage, seating, bike storage racks and landscaping. The rest stops will be located on the corner of Flinders Drive and Main South Road, the corner of Main South Road and Mimosa Avenue and along the pedestrian path between Main South Road and the Southern Expressway.

Please visit the project website at: infrastructure.sa.gov.au/darlington to view a plan outlining these details.

Lowered motorway wall

The project team is continuing to undertake remediation works on the eastern lowered motorway revetment wall. These works are expected to be complete in the last quarter of 2019.

For more information

Call: 1300 759 334

Email: enquiries@gatewaysouth.com.au

Visit: The project site office is now located at 15-31 Ayliffes Road. Please phone ahead to organise a time to speak with a member of the project team.

Web: infrastructure.sa.gov.au/darlington

The project also supports equitable access to information. Translation of project information will be provided on request.



Australian Government

BUILDING OUR FUTURE



Government
of South Australia

Department of Planning,
Transport and Infrastructure