

Safety Alert

Hazardous Materials – Asbestos

Glazing and Caulking materials potentially containing asbestos

Department for Infrastructure and Transport - Asbestos Advisory Team have issued a safety alert of the risk of possible asbestos exposure when removing or disturbing glass and frame of windows installed prior to 2004.

Hazard Description

Asbestos-containing materials (ACM) were commonly used in buildings before the 1980s. As a general rule if the workplace was built or renovated:

- before the mid-1980s - it is **highly likely** that it has asbestos-containing products
- between the mid-1980s and 1990 - it is **likely** that it has asbestos-containing products
- after 1990 - it is **unlikely** that it has asbestos-containing products, noting that asbestos products were not officially banned until December 2003.

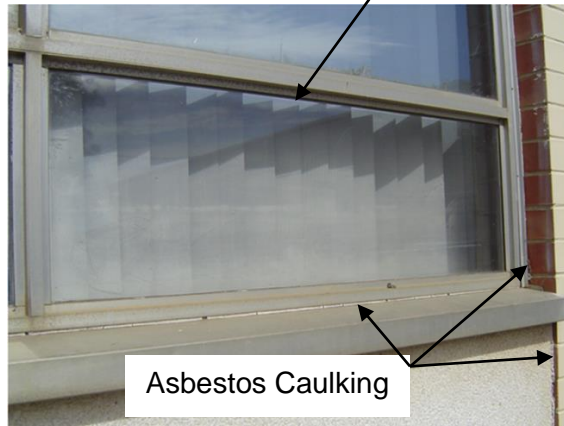
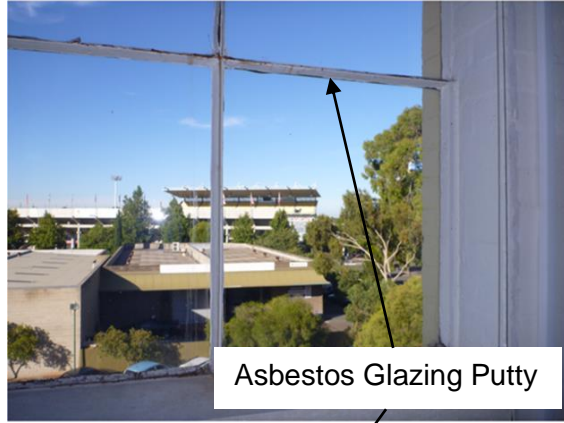
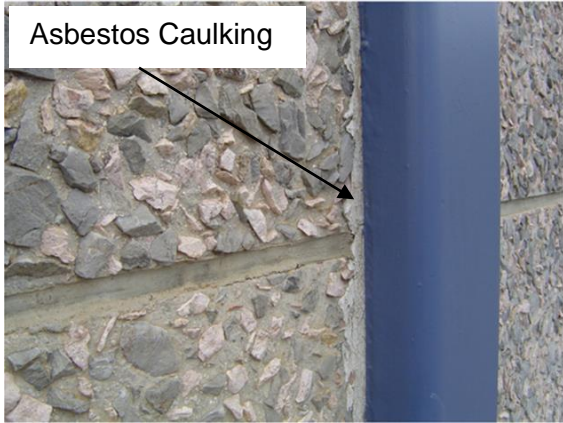
There may be a risk of possible asbestos exposure when removing or disturbing the glass, and associated frame of windows that were installed prior to 2004. Asbestos containing window putty or mastic may have been used to seal glass into steel and aluminium frames (see photos below).

Safety Advice

Prior to any demolition or refurbishment to a structure or plant check the asbestos register.

If there are any works on windows (pre 2004) or glazing/caulking materials that have not been tested, sample analysis by a NATA lab is required prior to work commencing. *This does not include windows that are glazed with rubber seals.*

Each window needs to be tested separately, as not all windows, even on the same building/elevation, will return a consistent positive or negative result.



For further information contact:

DIT Asbestos Advisory Team

Email: DIT.TSAsbestosServices@sa.gov.au

Phone: 08 8402 1716