

Gawler Rail Electrification Project

Cormack Road, Dry Creek level crossing temporary closure

The Australian and South Australian governments are jointly funding the electrification and modernisation of the Gawler rail line which will deliver a faster, cleaner and more reliable service, delivering an electrified network through Adelaide from Gawler to Seaford.

As part of the Gawler Rail Electrification Project, the Cormack Road level crossing will be temporarily closed to undertake testing of the new signalling system. This will include running test trains intermittently within the rail corridor.

Location: works will be undertaken within the rail corridor, **with the temporary closure of the Cormack Road level crossing**

When: works will be undertaken on Sunday, 30 January 2022, to minimise the impact to traffic during peak times.

Hours of work are between 6am and 6pm, weather permitting.

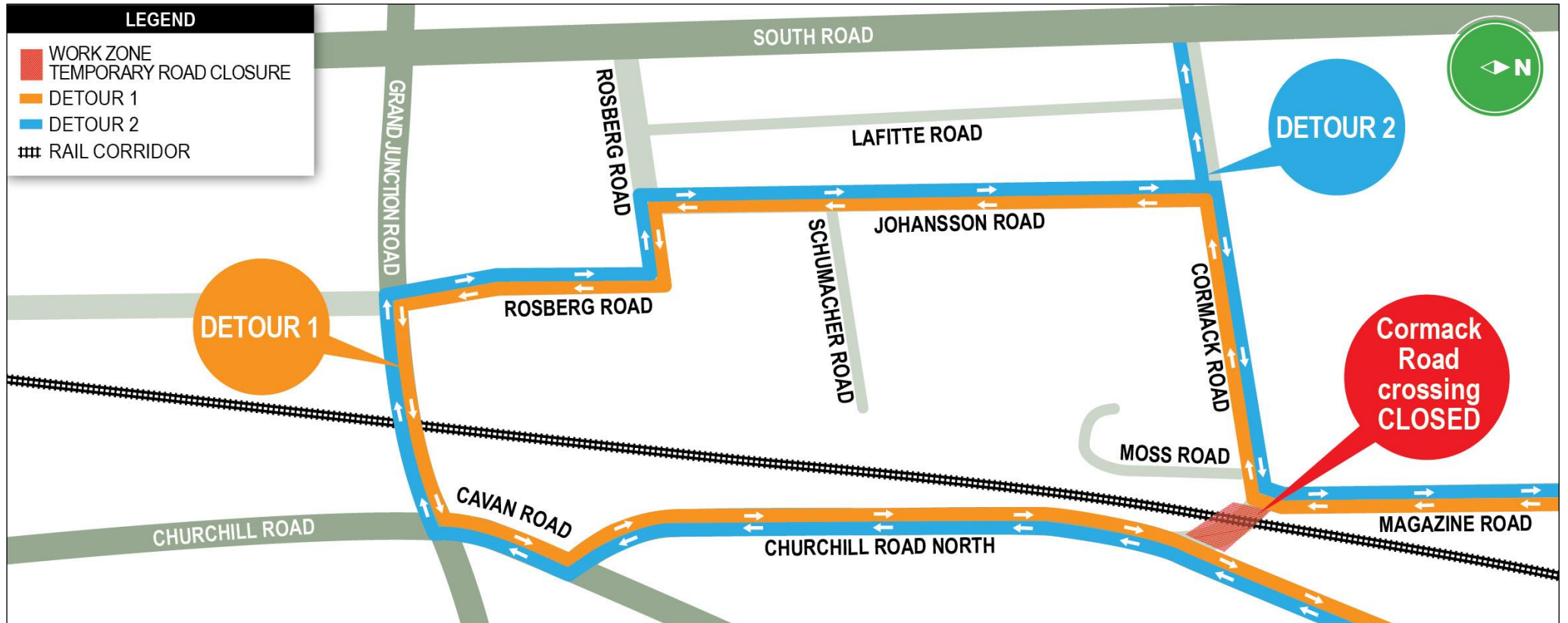
Traffic management and detours: the level crossing will be **closed to all traffic** when works are occurring. Detours will be in place to direct motorists to alternative crossing points via Grand Junction Road (refer to map). Speed restrictions will also apply. Please observe signage, speed restrictions and traffic controllers.

Access to residential properties and businesses will be maintained at all times. Pedestrians will be assisted to cross by staff on site (if safe to do so) or directed to the nearest safe crossing point.

What you can expect: works will involve making changes to the signalling system at the level crossing, with test trains running intermittently within the rail corridor. Please pay attention when using the dedicated pedestrian crossings and look out for oncoming trains. Every effort will be made to minimise disturbance to nearby residents and businesses as much as is practically possible.

dit.sa.gov.au

Follow us on:    



The Department appreciates your co-operation and patience while these important works are undertaken

If you have any questions or would like to speak to a member of the project team, please call 1300 080 834 or email: dit.gawlerelectrification@sa.gov.au or visit www.dit.sa.gov.au/grep

Follow www.facebook.com/DFITSA/ for project updates, or register your details to receive project updates directly by visiting www.dit.sa.gov.au/grep and selecting *Registration, Feedback and Suggestions*.

Kind regards
Gawler Rail Electrification Project Team