

ROAD CRASHES in South Australia

Statistical Summary of Road Crashes & Casualties in 2014



TOWARDS
ZERO
TOGETHER



Government of South Australia

Department of Planning,
Transport and Infrastructure

Prepared by the Road Crash Information Unit

Only available in electronic format from the Department of Planning, Transport and Infrastructure's Road Safety website:
<http://dpti.sa.gov.au/towardszerotogether>

Further Information

For further information concerning road crash statistics for South Australia, write to the

Safe Systems and Crash Investigation Unit
Safety Strategy Section
Safety and Service Division
Department of Planning, Transport and Infrastructure
GPO Box 1533,
ADELAIDE SA 5000
Email: DPTI.enquiriesadministrator@sa.gov.au

Full Title: Road Crashes in South Australia: Statistical Summary of Road Crashes & Casualties in 2014
Type of Report and Period Covered: Statistical, 2014
Pages: 65

Key Words: crash, crash rate, casualty, serious injury, age, blood alcohol concentration, day, hour, fatality, month, road user, severity, sex, vehicle movement, year, statistical

The data presented in this report is for information purposes only and should be used with care before drawing conclusions not contained in this report. Numbers may not match with future publications due to the database continually being updated with new information.

Summary Data for 2014

	Number
CRASHES	
Fatal Crashes	96
Serious Injury Crashes	594
Minor Injury Crashes	5 005
Property Damage Crashes	10 469
TOTAL	16 164
CASUALTIES	
Fatalities	108
Serious Injuries	711
Minor Injuries	6 163
TOTAL	6 982
OTHER DATA	
Vehicles on register¹	1 322 977
Fatalities per 10 000 vehicles	0.82
Serious Injuries per 10 000 vehicles	5.37
Casualties per 10 000 vehicles	52.77
Licence holders²	1 196 568
Driver/rider fatalities per 10 000 licence holders	0.53
Driver/rider serious injuries per 10 000 licence holders	3.74
Driver/rider casualties per 10 000 licence holders	39.33
Population³	1 685 714
Fatalities per 100 000 population	6.41
Serious Injuries per 100 000 population	42.18
Casualties per 100 000 population	414.19

¹ Excludes tractors, trailers, caravans, plant and equipment. Source: Registration and Licensing, Dept for Planning, Transport & Infrastructure, June 2014.

² No. of individual licence holders (including learner's permits). Source: Registration and Licensing, Dept for Planning, Transport & Infrastructure, June 2014.

³ Estimated resident population. Source: *Australian Demographic Statistics*, ABS, cat. no. 3101.0, June 2014.

Contents

SUMMARY DATA FOR 2014	1
KEY POINTS 2014	4
PREFACE	5
How crashes are processed?	5
Scope	5
Related Publications	5
Acknowledgements	5
Definitions & Explanatory Notes	6
CRASH AND CASUALTY TRENDS	8
Table 1 Trend in South Australia, 1995 – 2014	9
Figure 1 <i>Data Trends in SA, 1995 – 2014</i>	10
Figure 2 <i>Fatality Rates in SA, 1995 – 2014</i>	10
Table 2 Comparison with other Australian States and countries, 2013	11
Table 3 Road Crash Fatalities by Age Group compared with Deaths of All Causes, 2013	11
Table 4 Casualties by Road User Type and Severity, 1995 – 2014	12
Table 5 Casualties by Age Group and Severity, 1995 – 2014	13
Table 6 Casualties by Sex and Severity, 1995 – 2014	14
Table 7 Crashes and Casualties by Region and Severity, 1995 – 2014	15
ROAD CRASHES in 2014	16
Time Distribution of Crashes	
Table 8 Crashes and Casualties during Holiday Periods by Severity	17
Table 9a Casualty Crashes by Time of Day, Day of Week	18
Figure 3 <i>Casualty Crashes by Time of Day, Day of Week</i>	18
Table 9b Casualties by Time of Day, Day of Week	19
Table 9c All Crashes by Time of Day, Day of Week	19
Table 10 Crashes and Casualties by Month of Year and Severity	20
Crash Type	
Table 11a Crashes and Casualties by Crash Type and Severity: <i>Metropolitan Adelaide</i>	21
Table 11b Crashes and Casualties by Crash Type and Severity: <i>Rural</i>	21
Table 11c Crashes and Casualties by Crash Type and Severity: <i>South Australia</i>	22
Table 12 Hit Fixed Object Crashes by Object First Hit and Severity	22
Table 13 Single Vehicle Crashes by Motor Vehicle Type and Severity	22
Figure 4 <i>Definition for Coding Accidents Table</i>	23
Table 14a Crashes and Casualties by DCA and Severity: <i>Metropolitan Adelaide</i>	24
Table 14b Crashes and Casualties by DCA and Severity: <i>Rural</i>	26
Table 14c Crashes and Casualties by DCA and Severity: <i>South Australia</i>	28
Location & Distribution of Crashes	
Table 15a Crashes and Casualties by Location Type and Severity: <i>Metropolitan Adelaide</i>	30
Table 15b Crashes and Casualties by Location Type and Severity: <i>Rural</i>	30
Table 15c Crashes and Casualties by Location Type and Severity: <i>South Australia</i>	31
Table 16a Crashes and Casualties by Traffic Control and Severity: <i>Metropolitan Adelaide</i>	32
Table 16b Crashes and Casualties by Traffic Control and Severity: <i>Rural</i>	32
Table 16c Crashes and Casualties by Traffic Control and Severity: <i>South Australia</i>	33
Table 17 Crashes and Casualties by Area Speed Limit, Region & Severity	34
Table 18 Crashes and Casualties by Light Conditions, Region & Severity	34
Table 19 Crashes and Casualties by Vertical Alignment, Region & Severity	35
Table 20 Crashes and Casualties by Horizontal Alignment, Region & Severity	35
Table 21 Crashes and Casualties by Road Moisture, Region & Severity	36
Table 22 Crashes and Casualties by Route and Severity	36
Table 23a Crashes and Casualties by Local Government Area and Severity: <i>Metropolitan Adelaide: Local Government Roads</i>	37
Table 23b Crashes and Casualties by Local Government Area and Severity: <i>Metropolitan Adelaide: DPTI Roads</i>	38
Table 23c Crashes and Casualties by Local Government Area and Severity: <i>Metropolitan Adelaide: All Roads</i>	39
Table 24a Crashes and Casualties by Local Government Area and Severity: <i>Rural: Local Government Roads</i>	40
Table 24b Crashes and Casualties by Local Government Area and Severity: <i>Rural: DPTI Roads</i>	43
Table 24c Crashes and Casualties by Local Government Area and Severity: <i>Rural: All Roads</i>	44

Table 25a	Top 10 Intersections with the highest number of crashes, Casualty Crashes, 2010 - 2014	46
Table 25b	Top 10 Intersections with the highest number of crashes, All Crash Severities, 2010 - 2014	46
Motor Vehicle Type, Movement & Involvement		
Table 26	Motor Vehicles Involved in and Responsible for Crashes by Region and Severity	47
Table 27	Crashes and Casualties by Vehicle Movement of Motor Vehicle Responsible and Severity	48
Table 28	Crashes and Casualties Involving by Pedestrian Responsible Movement and Severity	48
Table 29	Crashes by Motor Vehicle Type Involved and Severity	49
Speed Involvement		
Table 30	Crashes and Casualties by Speed Involvement and Severity	49
CASUALTIES in 2014		50
Road User		
Table 31	Casualties by Road User Type, Severity, Age & Sex	51
Table 32	Casualties by Unit Type and Severity	52
Table 33	Passenger Vehicle Casualties by Position in Vehicle and Severity	52
Seatbelts & Helmets		
Table 34	Casualties by Casualty Type, Safety Device and Severity	53
Alcohol		
Table 35	Driver and Motorcyclist Casualties by Sex and BAC	54
Drugs		
Table 36	Driver and Motorcyclist Casualties by Sex and Drug	54
Responsibility		
Table 37a	Road User Involved In and Responsible for Crashes by Age & Sex: <i>Fatal Crash</i>	55
Table 37b	Road User Involved In and Responsible for Crashes by Age & Sex: <i>Serious Injury Crash</i>	56
Table 37c	Road User Involved In and Responsible for Crashes by Age & Sex: <i>Minor Injury Crash</i>	57
Table 37d	Road User Involved In and Responsible for Crashes by Age & Sex: <i>Property Damage Crash</i>	58
Table 37e	Road User Involved In and Responsible for Crashes by Age & Sex: <i>All Crashes</i>	59
Table 38	Drivers & Motorcycle Riders Involved in and Responsible for Crashes by Licence Type and Severity	60
Table 39a	Drivers & Motorcycle Riders Responsible for Crashes by Sex, Age and Licence Type: <i>Fatal Crash</i>	60
Table 39b	Drivers & Motorcycle Riders Responsible for Crashes by Sex, Age and Licence Type: <i>Serious Injury Crash</i>	61
Table 39c	Drivers & Motorcycle Riders Responsible for Crashes by Sex, Age and Licence Type: <i>Minor Injury Crash</i>	61
Table 39d	Drivers & Motorcycle Riders Responsible for Crashes by Sex, Age and Licence Type: <i>Property Damage Crash</i>	62
Table 39d	Drivers & Motorcycle Riders Responsible for Crashes by Sex, Age and Licence Type: <i>All Crashes</i>	62
REFERENCE INFORMATION for South Australia		63
Demographic Data		
Table 40	Estimated Population by Age and Sex	64
Table 41	Licence and Permit Holders by Age and Sex	64
Vehicle Information		
Table 42	Motor Vehicle on Register by Vehicle Type	65
Table 43	Vehicle Kilometres Travelled	65

Key Points 2014

- A total of 16 164 crashes were processed for South Australia in 2014 – 96 fatal crashes, 594 serious injury crashes, 5005 minor injury crashes and 10 469 property damage crashes. This resulted in 108 fatalities, 711 serious injuries and 6163 minor injuries.
- The estimated cost of crashes to the community in 2014 was \$1.8 billion¹
- The 108 fatalities that occurred in 2014 resulted in a fatality rate per 100 000 population of 6.41, higher than the national average of 4.9
- The number of persons seriously injured in 2014 has decreased by 79 (10%) from 790 in 2013 to 711 in 2014 – again below the 2020 Serious Injury target of less than 800 set out in *South Australia's Road Safety Strategy 2020 – Towards Zero Together*.
- Crash on rural South Australian roads accounted for 16% of all crashes, however 61% of fatal crashes were on rural roads².
- Single vehicle crashes made up 25% of the 16 164 crashes with 35% occurring in rural South Australia. 63% of fatal crashes were single vehicle crashes, of which 57% occurred in rural areas.
- Of the drivers and passengers killed in 2014, 25% were not wearing a seatbelt at the time of the crash; 3% of those vehicle occupants reported injured were recorded as not wearing a seatbelt.
- Pedestrians are more likely killed or seriously injured when involved in a crash compared all other road user types.
- Four cyclists were killed in 2014, all 4 were wearing a helmet; 2% of those reported injured failed to wear a helmet.
- 11 fatalities in 2014 were motorcycle riders. Ten riders were male, one was female. 89% of those motorcyclists (incl. pillion passengers) reported injured were male.
- 22 people aged 70 years or older were killed in 2014. Those aged 70+ accounted for 20% of total fatalities, 8% of serious injuries and 7% of minor injuries. 8 out of 17 of pedestrian fatalities were over the age of 70 and 16% of reported pedestrian serious injuries were of this age. Twenty one percent of drivers killed were age 70 years or older.
- There were 17 fatalities recorded in the 16-24 age group. This is a reduction on the 5 year average (2009-2013) of 23 fatalities per year.
- 22% of drivers and motorcycle riders killed had a blood alcohol concentration over 0.05g/100ml. Of those known tested that were seriously injured 14% had a BAC over 0.05. All male casualties who were tested were almost 3 times more likely to be over the limit compared to females.
- 23% of drivers and motorcycle riders tested killed were positive for one or a combination of THC (cannabis), MDMA (Ecstasy) or Methamphetamines. Of those tested that were seriously injured 14% were positive for one or a combination of drugs.
- 79% of crashes that occurred in metropolitan Adelaide occurred on a road with a speed limit of 50km/h or 60km/h; 51% of crashes that occurred on rural roads, occurred on roads with a speed limit of 100km/h or above. 88% of rural fatal crashes occurred on a road with a speed limit of 100km/h or above.

¹ Willingness to Pay method used in calculations

² Rural and Metro boundaries have changed from 1 January 2013 to align with new ABS Greater Adelaide City Statistical Area boundaries – For more information please look at *Preface* and *Definitions & Explanatory Notes*

Preface

This publication presents information compiled from police reported crashes in South Australia for 2014 and is the forty-seventh edition in an annual series that commenced with 1967 data.

How crashes are reported and processed?

Currently when a reportable road crash occurs, South Australia Police (SAPOL) collect the data through vehicle crash reports, which are entered into SAPOL's Vehicle Collision System (VCS). The reports are then electronically forwarded to the Road Crash Information Unit of the Department for Planning, Transport and Infrastructure (DPTI) for further processing and geocoding. The information is checked for accuracy and consistency to ensure the reliability of any published statistics. Processed crash data is stored in the DPTI 'Road Crash Database' (TARS).

The data presented in this report is for information purposes only and should be used with care before drawing conclusions not contained in this report. Details in this publication may differ from information previously released or published due to the database continually being updated with new information. Road crash information contained in this publication is derived from TARS.

Also note that TARS is continually being updated so historical data may not match with previous reported data.

Scope

The crash statistics included in this publication are confined to those crashes which:

- were reported to the police;
- occurred on a road defined in the Road Traffic Act 1961;
- were defined by the ATSB publication "*Guidelines For Determining Events as Road Crashes in Australia*" (published March 2000)
- involved at least one moving vehicle
- involved at least one person being killed or injured, vehicle towed away, or total property damage of \$5000 or greater
- and includes all crashes that involved bicycles, motorcycles, scooters and gophers (irrespective of damage value or injury level)

From 1 January 2013, DPTI only processed 'property damage' crashes with an aggregated damage value of \$5000 or greater. This represents a change from previous reporting, where the value of 'property damage' crashes processed by DPTI since July 2003 was \$3000. Preceding this, 'property damage' crash value was \$1000 introduced in 1 January 1998.

Related Publications

All monthly and annual statistical reports are available from DPTI's Road Safety website

http://towardszerotogether.sa.gov.au/road_crash_facts/sa_crashes

Road Fatalities in South Australia (monthly)

Road Fatalities Involving Heavy Vehicles in South Australia (monthly)

Road Crash Serious Injuries in South Australia (monthly)

Road Crash Serious Injuries Involving Heavy Vehicles in South Australia (monthly)

Road Crashes in South Australia annual reports

South Australian Road Safety Progress Report (Quarterly)

Road Safety Fact Sheets

Acknowledgements

Acknowledgment is extended to the South Australian Police for supply of reported road crash reports.

Notes

From 1 January 2013, new ABS boundaries were introduced into the coding corresponding to the Greater Adelaide City Statistical Area replacing the previous metro/rural boundaries. As a consequence, Mt Barker and Adelaide Hills Council, part of Mallala, Barossa and Light Councils are now incorporated into Metropolitan Adelaide.

Definitions & Explanatory Notes

BAC	Blood Alcohol Concentration (mg/100mL).
Bicycle	Any two or three wheeled device operated by pedals and propelled by human power. Includes motorised bicycles
Bicycle Rider	A person occupying the controlling position of a bicycle
Bicyclist	A bicycle rider or passenger.
Driver	A controller of a motor vehicle other than a motorcycle or bicycle.
Drug	Methamphetamine, MDMA (Ecstasy) and/or THC (cannabis)
DPTI	Department of Planning, Transport & Infrastructure
Casualty	Any person killed or injured as a result of a crash.
Casualty Crash	Crash where someone had been killed or injured as a result of the crash.
DCA	Definition for Coding Accidents – a coding system to describe the events involved in a crash. The ‘crash-type’ is based on the traffic movements leading up to the crash. Participant intent, as well as actual movement, is used in determining the DCA crash type.
Fatal Crash	A crash where there is at least one fatality.
Fatality	A person who dies within 30 days of a crash as a result of injuries sustained in that crash.
Heavy Vehicle	Heavy vehicle includes the following vehicle types: Rigid truck, Semi Trailer, Bus, B Double and other defined special vehicle
Intersection Crash	A crash for which the first impact occurs at or within 20 metre radius of an intersection.
Metropolitan	Greater Adelaide City Statistical Area. Comprises of the following local government areas: Adelaide, Burnside, Campbelltown, Charles Sturt, Holdfast shores, Marion, Mitcham, Norwood, Payneham & St Peters, Onkaparinga, Playford, Port Adelaide & Enfield, Prospect, Salisbury, Tea Tree Gully, Unley, Walkerville, West Torrens, Adelaide Hills, Mount Barker, Gawler and part of Barossa, Light and Mallala councils.
Mid-block Crash	A crash that occurs between two intersections.
Minor Injury	A person who sustains injuries requiring medical or surgical treatment, either by a doctor or in a hospital, but is not admitted to hospital, as a result of a road crash and who does not die as a result of those injuries within 30 days of the crash.
Minor Injury Crash	A crash where at least one person sustains minor injuries
Motor Vehicle	Any road vehicle which is mechanically or electrically powered but not operated on rails.
Motorcycle	Any mechanically or electrically propelled two or three wheeled with or without side-car includes solo motorcycle, motorcycle with sidecar, motor scooter, mini-bike, and scooter.
Motorcycle Rider	A person occupying the controlling portion of a motorcycle.
Motorcyclist	Motorcycle rider or pillion passenger
Other Road User	Occupants/controllers of animal drawn vehicles, ridden animals, railway vehicles, tram, and other defined special vehicle.
Other Vehicle Type	Animal drawn vehicles, ridden animals, railway vehicles, and tram
Passenger	Any person, other than the controller, who is in, on, or falling from a road vehicle at the time of the crash, provided a portion of the person is in/on the road vehicle. It does not include those that are boarding or alighting a road vehicle at the time of the crash.
Passenger Vehicle	Include all cars and car derivatives including 4WDs, vans, ute and station wagons. Excludes heavy vehicles, light trucks (<4.5 tonnes), motorcycles and bicycles.

Pedestrian	Any person who is standing, walking, playing, lying on the road or alighting or boarding a road vehicle at the time of the crash. It does not include those that have fallen from a vehicle. Also Includes riders and passengers of motorised wheelchairs/wheelchairs and small wheeled vehicle users.
Pillion Passenger	A passenger on but not controlling a motorcycle.
Property Damage Crash	A crash resulting in property damage in excess of \$5000 or when one vehicle has been towed away and in which no person is injured or dies within 30 days of the crash.
Road Crash	Any apparent unpremeditated event reported to the police and resulting in death, injury or property damage in excess of the prescribed amount, and attributed to the movement of the road vehicle on a road.
Road User	Any person who is a pedestrian, rider, or the occupant of a road vehicle.
Rural	Area outside of metropolitan Adelaide. Comprises of the following local government areas: Ceduna, Cleve, Elliston, Franklin Harbor, Kimba, Lower Eyre Peninsula, Port Lincoln, Streaky Bay, Tumby Bay, Whyalla, Cooper Pedy, Finders Rangers, Port Augusta, Roxby Downs, Alexandrina, Kangaroo Island, Victor Harbor, Yankalilla, Grant, Mount Gambier, Naracoorte Lucindale, Robe, Tatiara, Wattle Range, Berri & Barmera, Karoonda East Murray, Loxton Waikerie, Mid Murray, Murray Bridge, Renmark Paringa, Southern Mallee, The Coorong, Barunga West, Calre & Gilbert Valleys, Copper Coast, Goyder, Mount Remarkable, Northern Areas, Orroroo/Carrieton, Peterborough, Port Pirie, Wakefield, Yorke Peninsula and part of Barossa, Light and Mallala councils.
Serious Casualty	A fatality or serious injury
Serious Casualty Crash	A crash where at least one fatality or serious injury occurs.
Serious Injury	A person who sustains injuries and is admitted to hospital for a duration of 24 hours or more as a result of a road crash and who does not die as a result of those injuries within 30 days of the crash.
Serious Injury Crash	A non-fatal crash in which at least one person is seriously injured.
Vehicle Occupant	Driver or passenger in passenger, heavy or unknown motor vehicle

Speed definition

Based on NSW Roads and Traffic Authority criteria for determining whether or not a crash is to be considered as having involved speeding as a contributing factor. A motor vehicle is assessed as having been speeding if it satisfies the conditions described below:

- (a) The vehicle's controller (driver or rider) was charged with a speeding offence; or the vehicle was described by police as travelling at excessive speed; or the stated speed of the vehicle was in excess of the speed limit; or the vehicle weight or the speed of the vehicle was faster than that allowed for the licence class of the driver or rider, or the vehicle weight OR
- (b) The vehicle was performing a manoeuvre characteristic of excessive speed, that is:
 - while on a curve the vehicle jack-knifed, skidded, slid or the controller lost control; or
 - the vehicle ran off the road while negotiating a bend or turning a corner and the controller was not distracted by something or disadvantaged by drowsiness or sudden illness and
 - was not swerving to avoid another vehicle, animal or object and the vehicle did not suffer equipment failure.

CRASH & CASUALTY TRENDS

Historical Data

Fatality Rates

Interstate and International Comparisons

Causes of Death

Road User Type

Age & Sex

Region

Table 1: Trends in South Australia, 1995 - 2014

Year	Crashes						Casualties				Vehicles on Register ¹ (‘000)	Licence Holders ² (‘000)	Population ³ (‘000)	Vehicle kilometers traveled ⁴ (‘000 000)	Fatalities per			
	Fatal Crashes	Serious Injury Crashes	Minor Injury Crashes	TOTAL Casualty Crashes	Property Damage Crashes	ALL Crashes	Fatalities	Serious Injuries	Minor Injuries	ALL Casualties					10, 000 vehicles	10,000 licence holders ⁵	100,000 population	100 million VKT
1995	164	1185	5097	6446	32844	39290	182	1521	6638	8341	945	975	1469	13195	1.93	0.98	12.39	1.38
1996	162	1324	5023	6509	32432	38941	181	1720	6775	8676	959	979	1474	-	1.89	1.09	12.28	-
1997	124	1168	5138	6430	32442	38872	149	1509	6716	8374	969	995	1479	-	1.54	0.80	10.07	-
1998	152	1225	5551	6928	32664	39592	168	1566	7345	9079	995	995	1487	13974	1.69	0.85	11.30	1.20
1999	132	1238	6047	7417	34287	41704	153	1607	8071	9831	1010	1012	1493	13081	1.52	0.85	10.25	1.17
2000	151	1229	6433	7813	33172	40985	166	1627	8501	10294	1011	1025	1498	13153	1.64	1.04	11.08	1.26
2001	137	1245	6351	7733	33041	40774	154	1603	8497	10254	1023	1045	1502	15085	1.51	0.85	10.25	1.02
2002	138	1199	6249	7586	32525	40111	154	1538	8382	10074	1045	1047	1522	14855	1.47	0.88	10.12	1.04
2003	135	1169	5786	7090	23220	30310	156	1470	7597	9223	1034	1052	1527	14963	1.51	0.85	10.21	1.04
2004	128	1071	5521	6720	15548	22268	139	1331	7297	8767	1049	1072	1534	15241	1.32	0.92	9.06	0.91
2005	126	994	5106	6226	14945	21171	147	1296	6629	8072	1065	1094	1542	14533	1.38	0.84	9.53	1.01
2006	104	1092	5009	6205	14513	20718	117	1358	6489	7964	1085	1042	1555	15535	1.08	0.77	7.53	0.75
2007	108	1090	5295	6493	15230	21723	125	1368	6961	8454	1107	1073	1585	14212	1.13	0.62	7.89	0.88
2008	87	996	5615	6698	15223	21921	99	1217	7174	8490	1171	1094	1602	-	0.85	0.56	6.18	-
2009	104	908	5213	6225	15506	21731	119	1108	6618	7845	1201	1135	1623	-	0.99	0.65	7.33	-
2010	105	886	5424	6415	15877	22292	118	1050	6907	8075	1226	1136	1645	14615	0.96	0.64	7.17	0.81
2011	95	781	5471	6347	16971	23318	103	932	6896	7931	1265	1141	1657	-	0.81	0.53	6.22	-
2012	86	637	5377	6100	16729	22829	94	761	6624	7479	1285	1155	1655	16313	0.73	0.56	5.68	0.58
2013	89	666	5037	5792	10883	16675	97	790	6290	7177	1305	1186	1671	-	0.74	0.51	5.80	-
2014	96	594	5005	5695	10469	16164	108	711	6163	6982	1323	1197	1686	-	0.82	0.53	6.41	-

¹ At 30 June. Excludes tractors, trailers, caravans, plant and equipment. Source: TRUMPS database, Registration & Licensing Section, DPTI

² At 30 June. Source: TRUMPS database, Registration & Licensing Section, DPTI

³ Population as of 30 June. Source: Australian Bureau of Statistics, *Australian Demographic Statistics*, cat.no. 3101.0.

⁴ Travel for the year ended 30 June. Source: Australian Bureau of Statistics, *Survey of Motor Vehicle Use*, cat. no. 9208.0.

⁵ Licence holder fatality rates are based on drivers and riders fatalities only.

Notes:

From 1 July 2003, DPTI began to only process property damage crashes where the values was \$3000 or greater or the vehicle was towed away regardless of the damage value. Previous to this it was \$1000.

From 1 January 2013, DPTI began to only process property damage crashes where the value was \$5000 or greater or the vehicle was towed away regardless of the damage value

DPTI TARS road crash database is continually being updated so historical data may not match with previous reported data

Figure 1: Data Trends in South Australia, 1995 - 2014

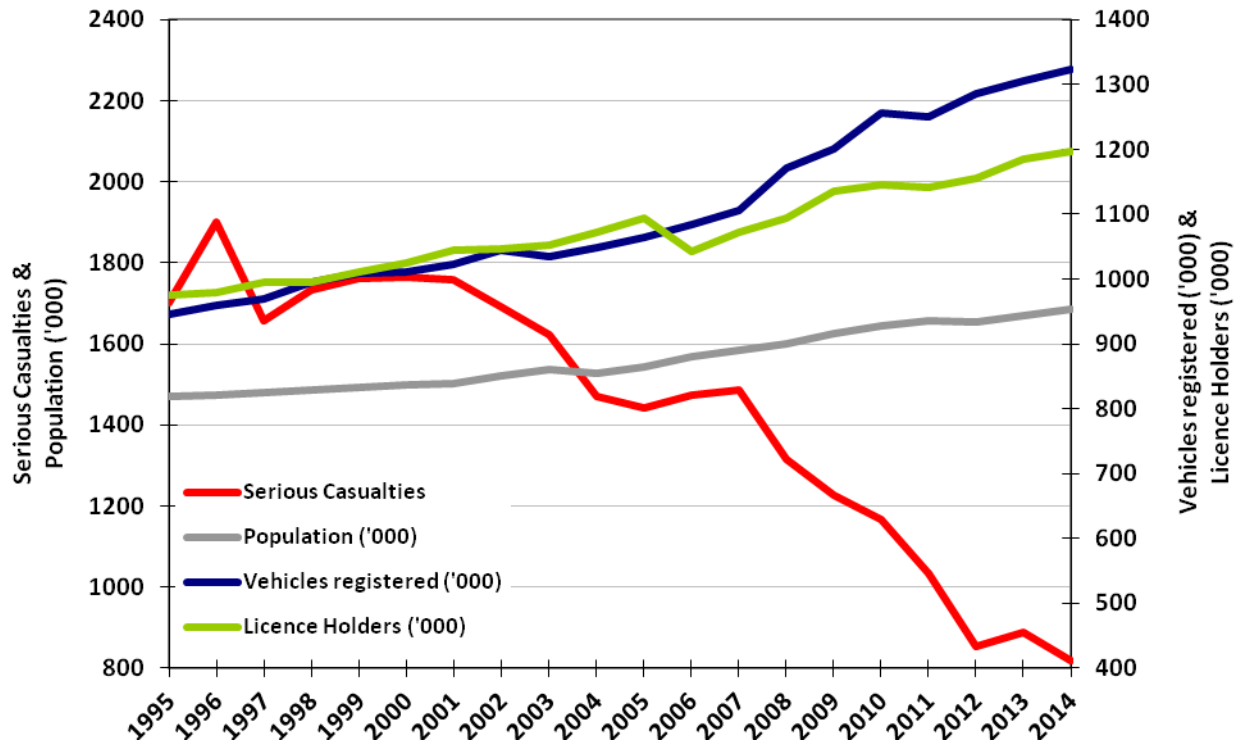


Figure 2: Fatality Rates in South Australia, 1995 - 2014

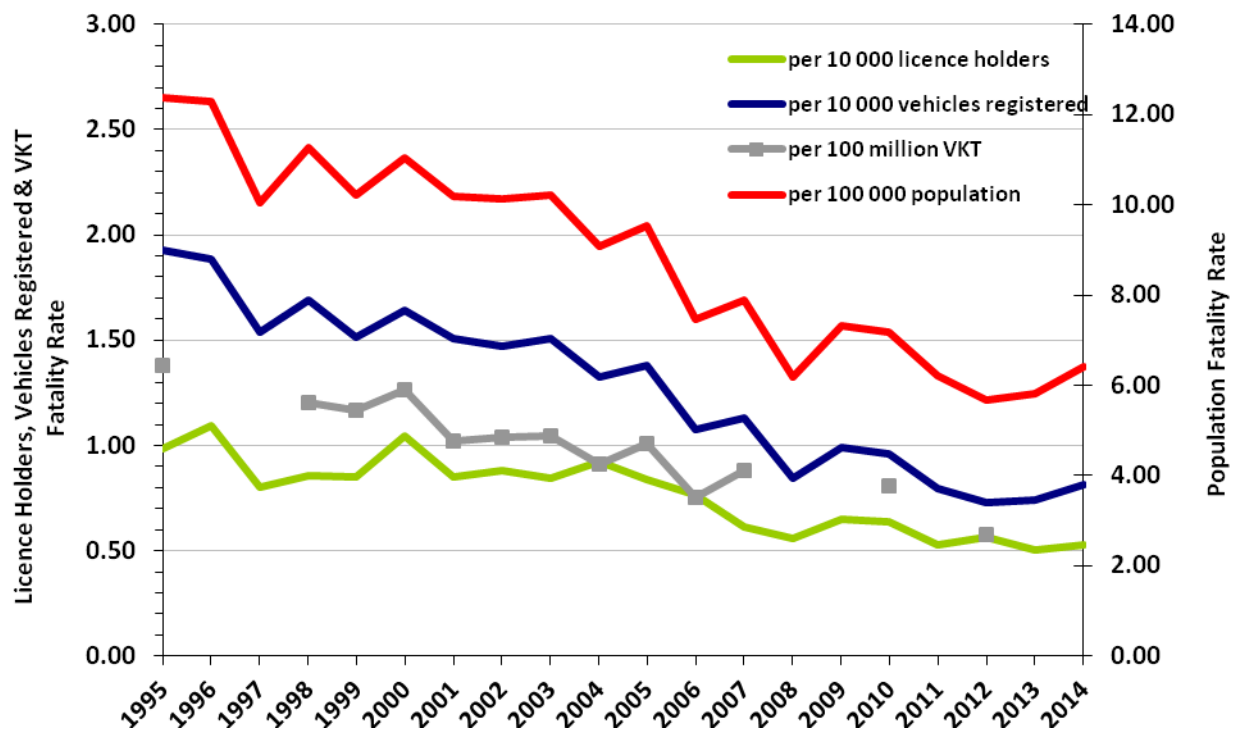


Table 2: Comparison with other Australian States¹ and countries², 2013

	Fatalities	Vehicles on register ³ ('000)	Population ⁴ ('000)	Fatalities per 10 000 vehicles	Fatalities per 100 000 population
SOUTH AUSTRALIA	97	1 305	1 671	0.75	5.80
New South Wales	333	4 985	7 407	0.67	4.50
Victoria	243	4 394	5 734	0.55	4.24
Queensland	271	3,606	4 651	0.75	5.83
Western Australia	162	2,048	2 515	0.79	6.44
Tasmania	36	437	513	0.82	7.02
Australian Capital Territory	7	274	381	0.26	1.84
Northern Territory	37	149	243	2.48	15.23
AUSTRALIA	1 187	17 198	23 114	0.69	5.14
CANADA	1 923	23 006	35 158	0.84	5.47
DENMARK	191	-	5 603	-	3.41
FRANCE	3 268	-	63 660	-	5.13
GERMANY	3 339	54 480	80 524	0.61	4.15
JAPAN	5 152	90 565	127 296	0.57	4.05
NETHERLANDS	476	10 124	16 780	0.47	2.84
NEW ZEALAND	254	3 305	4 471	0.77	5.68
NORWAY	187	3 747	5 051	0.50	3.70
SWEDEN	260	5 813	9 556	0.45	2.72
UNITED KINGDOM	1 770	36 101	64 106	0.49	2.76
UNITED STATES	32 719	269 294	316 129	1.21	10.35

Most recent data available

Table 3: Road Crash Fatalities by Age Group compared with Deaths of All Causes, 2013

Age Groups	Deaths from All Causes ⁵	Road Fatalities ⁶	
		Number	% of All Deaths
0-14	103	5	5%
15-19	23	3	13%
20-24	47	13	28%
25-29	56	5	9%
30-34	87	3	3%
35-39	91	3	3%
40-49	407	20	5%
50-59	759	12	2%
60-69	1 470	9	1%
70+	9 760	24	0%
Unknown	-	-	-
TOTAL	12 803	97	1%

Most recent data available

¹ Australian data based on information published by the Bureau of Infrastructure, Transport and Regional Economics (BITRE) for 2013.

² Other data based on information from BITRE report, *International Road Safety Comparisons 2013* published August 2015.

³ Australian figures (except SA) are as at 30 June 2013. Source: Australian Bureau of Statistics, *Motor Vehicle Census Australia*, cat. no. 3303.0. These figures may not agree with registration statistics for individual States and Territories. Data for SA sourced from TRUMPS, as of 30 June 2013.

⁴ Population as of 30 June. Source: Australian Bureau of Statistics, *Australian Demographic Statistics*, cat.no. 3101.0

⁵ Source: Australian Bureau of Statistics, *Deaths, Australia*, cat.no. 3302.0.

⁶ Source: DPTI's TARS road crash database

Table 4: Casualties by Road User Type and Severity, 1995 - 2014

Year	Vehicle Occupant						Motorcyclist						Pedestrian			Bicyclist			Other Road User			ALL ROAD USERS		
	Driver ¹			Passenger			Rider			Pillion Passenger			F	SI	MI	F	SI	MI	F	SI	MI	F	SI	MI
	F	SI	MI	F	SI	MI	F	SI	MI	F	SI	MI												
1995	84	648	3571	36	432	1823	12	153	359	0	22	50	40	186	411	8	80	421	2	0	3	182	1521	6638
1996	92	779	3615	40	522	1922	15	189	365	3	14	33	24	153	428	7	59	403	0	4	9	181	1720	6775
1997	67	712	3724	44	408	1749	13	144	353	1	15	31	20	147	427	4	79	427	0	4	5	149	1509	6716
1998	72	779	4213	44	383	1972	13	157	314	0	20	26	35	142	402	4	79	408	0	6	10	168	1566	7345
1999	71	749	4749	38	456	2173	15	123	277	0	14	20	26	178	419	3	84	425	0	3	8	153	1607	8071
2000	91	739	5132	37	490	2191	16	158	323	0	12	25	21	151	409	1	75	412	0	2	9	166	1627	8501
2001	76	809	5023	32	419	2298	13	156	300	1	13	21	26	143	426	6	58	417	0	5	12	154	1603	8497
2002	72	753	5012	39	434	2196	20	153	321	1	7	22	19	129	425	3	59	402	0	3	4	154	1538	8382
2003	77	783	4663	44	343	1896	12	144	280	1	19	27	17	115	359	5	63	367	0	3	5	156	1470	7597
2004	80	687	4320	23	316	1915	20	157	288	1	9	20	12	104	369	3	57	382	0	1	3	139	1331	7297
2005	74	646	3943	39	342	1598	18	125	276	2	11	19	11	111	374	3	61	418	0	0	1	147	1296	6629
2006	58	670	3772	20	302	1586	22	178	322	1	17	22	12	111	365	4	80	419	0	0	3	117	1358	6489
2007	58	685	4011	37	347	1762	8	162	409	0	10	17	17	108	330	5	56	429	0	0	3	125	1368	6961
2008	45	582	4211	24	264	1720	16	176	435	1	8	23	12	120	334	1	67	447	0	0	4	99	1217	7174
2009	60	549	4010	32	243	1479	14	159	389	1	9	15	10	89	279	2	59	442	0	0	4	119	1108	6618
2010	57	500	4205	24	211	1574	16	146	388	0	7	20	16	103	245	5	82	470	0	1	5	118	1050	6907
2011	40	445	4236	22	193	1505	20	143	361	1	9	19	17	77	269	3	61	499	0	4	7	103	932	6896
2012	52	350	4027	14	137	1431	13	113	339	2	6	14	10	77	296	3	78	516	0	0	1	94	761	6624
2013	48	384	3860	17	122	1326	12	129	369	0	5	18	15	87	231	5	63	486	0	0	0	97	790	6290
2014	52	320	3779	24	135	1225	11	127	417	0	3	20	17	62	227	4	64	495	0	0	0	108	711	6163

MI – Minor Injury; SI – Serious Injury; F - Fatality

¹ Includes a minor injury that was a 'rider' of a heavy vehicle

Table 5: Casualties by Age and Severity, 1995 - 2014

Year	0-15			16-19			20-24			25-29			30-39			40-49			50-59			60-69			70+			Unknown			ALL CASUALTIES		
	F	SI	MI	F	SI	MI	F	SI	MI	F	SI	MI	F	SI	MI	F	SI	MI	F	SI	MI	F	SI	MI	F	SI	MI	F	SI	MI	F	SI	MI
1995	14	132	597	22	225	884	24	255	1094	16	168	716	39	226	1056	18	154	807	10	94	450	19	69	308	20	99	330	0	99	396	182	1521	6638
1996	12	162	642	18	230	931	27	279	1002	21	203	708	26	267	1155	23	160	824	12	98	475	15	101	286	26	118	362	1	102	390	181	1720	6775
1997	8	149	603	19	194	840	21	233	973	13	149	718	28	255	1127	11	150	866	11	91	524	12	79	307	24	110	350	2	99	408	149	1509	6716
1998	10	134	623	18	251	979	17	212	1099	12	172	820	25	225	1207	21	181	889	12	103	555	14	66	315	37	120	346	2	102	512	168	1566	7345
1999	14	147	662	21	218	987	23	222	1056	11	136	904	22	225	1337	18	172	996	11	110	620	13	81	347	20	118	343	0	178	819	153	1607	8071
2000	11	121	547	26	212	1115	16	229	1180	23	158	893	21	225	1427	21	196	1042	10	113	698	14	81	396	24	111	376	0	181	827	166	1627	8501
2001	10	101	519	16	223	1092	14	210	1168	16	159	887	32	260	1405	14	192	1120	11	128	724	13	72	346	28	80	388	0	178	848	154	1603	8497
2002	16	107	461	16	198	1142	18	213	1159	17	164	875	28	241	1385	24	177	1088	10	104	680	5	54	349	20	108	416	0	172	827	154	1538	8382
2003	11	81	434	21	189	993	20	225	1060	11	147	750	26	244	1282	19	182	1081	18	119	701	10	62	329	20	100	331	0	121	636	156	1470	7597
2004	7	64	423	7	199	905	27	212	1045	17	135	652	26	207	1204	18	169	961	17	98	626	11	56	351	9	84	369	0	107	761	139	1331	7297
2005	8	86	349	18	173	874	28	195	920	19	115	616	16	205	1099	19	157	956	11	121	626	11	77	341	17	94	315	0	73	533	147	1296	6629
2006	3	74	441	12	181	707	17	186	932	11	129	610	17	225	1028	23	181	901	14	122	681	10	70	355	10	88	344	0	102	490	117	1358	6489
2007	6	60	402	18	173	804	16	210	970	14	137	703	14	214	1102	13	167	982	10	139	691	5	73	352	29	100	388	0	95	567	125	1368	6961
2008	5	51	439	16	157	812	12	177	921	10	114	700	19	211	1156	9	164	1064	13	110	797	4	75	434	11	91	365	0	67	486	99	1217	7174
2009	4	60	393	20	138	765	22	138	827	10	124	682	17	179	1120	20	132	1040	12	112	728	2	81	417	12	94	320	0	50	326	119	1108	6618
2010	5	49	397	19	110	737	12	131	846	5	121	740	16	145	1156	22	155	1013	17	112	879	8	72	406	14	120	381	0	35	352	118	1050	6907
2011	4	43	388	6	94	694	5	127	937	9	95	688	22	146	1177	22	141	1055	12	106	833	4	77	460	19	73	390	0	30	274	103	932	6896
2012	3	32	393	7	76	616	10	104	837	7	75	695	9	106	1139	16	112	997	11	91	785	9	70	464	22	73	423	0	22	275	94	761	6624
2013	6	37	349	2	50	569	13	93	757	5	81	692	6	112	1049	20	120	959	12	117	769	9	70	457	24	82	451	0	28	238	97	790	6290
2014	7	26	337	6	80	517	11	90	764	9	71	652	13	99	998	21	122	966	6	93	773	13	54	510	22	57	423	0	19	223	108	711	6163

MI – Minor Injury; SI – Serious Injury; F - Fatality

Table 6: Casualties by Sex and Severity, 1995 - 2014

Year	Male			Female			Unknown			ALL PERSONS		
	F	SI	MI	F	SI	MI	F	SI	MI	F	SI	MI
1995	130	967	3233	52	553	3355	0	1	50	182	1521	6638
1996	132	1046	3170	48	669	3571	1	5	34	181	1720	6775
1997	98	947	3173	51	554	3488	0	8	55	149	1509	6716
1998	111	941	3277	55	605	3897	2	20	171	168	1566	7345
1999	96	965	3715	56	613	4192	1	29	164	153	1607	8071
2000	121	981	3914	45	626	4479	0	20	108	166	1627	8501
2001	113	974	3929	41	621	4504	0	8	64	154	1603	8497
2002	117	961	3951	37	574	4426	0	3	5	154	1538	8382
2003	109	914	3596	47	552	3995	0	4	6	156	1470	7597
2004	111	823	3467	28	507	3808	0	1	22	139	1331	7297
2005	108	831	3284	39	464	3320	0	1	25	147	1296	6629
2006	89	873	3082	28	485	3401	0	0	6	117	1358	6489
2007	94	871	3315	31	497	3621	0	0	25	125	1368	6961
2008	74	758	3369	25	459	3794	0	0	11	99	1217	7174
2009	92	702	3182	27	404	3419	0	2	17	119	1108	6618
2010	75	663	3259	43	386	3635	0	1	13	118	1050	6907
2011	76	584	3278	27	348	3610	0	0	8	103	932	6896
2012	72	499	3150	22	262	3464	0	0	10	94	761	6624
2013	68	502	2940	29	288	3338	0	0	12	97	790	6290
2014	76	472	2922	32	239	3239	0	0	2	108	711	6163

MI – Minor Injury; SI – Serious Injury; F - Fatality

Table 7: Crashes and Casualties by Region¹ and Severity, 1995 - 2014

Year	Metropolitan Adelaide ¹									Rural South Australia ¹								
	Crashes					Casualties				Crashes					Casualties			
	Fatal Crashes	Serious Injury Crashes	Minor Injury Crashes	Property Damage Crashes	ALL CRASHES	Fatalities	Serious Injuries	Minor Injuries	ALL CASUALTIES	Fatal Crashes	Serious Injury Crashes	Minor Injury Crashes	Property Damage Crashes	ALL CRASHES	Fatalities	Serious Injuries	Minor Injuries	ALL CASUALTIES
1995	77	677	4120	27726	32600	77	817	5152	6046	87	509	978	5122	6696	105	704	1486	2295
1996	68	700	4031	27232	32031	73	861	5206	6140	94	625	991	5194	6904	108	860	1568	2536
1997	52	665	4199	27194	32110	55	800	5294	6149	72	504	928	5231	6735	94	711	1410	2215
1998	65	698	4579	27285	32627	70	855	5868	6793	87	527	970	5360	6944	98	710	1474	2282
1999	56	674	5091	28790	34611	61	830	6618	7509	76	564	956	5499	7095	92	777	1454	2323
2000	63	681	5423	28055	34222	68	842	6983	7893	88	548	1009	5117	6762	98	785	1516	2399
2001	64	647	5369	27988	34068	67	768	6950	7785	73	598	983	5051	6705	87	835	1548	2470
2002	49	621	5218	27582	33470	54	754	6743	7551	89	578	1031	4942	6640	100	784	1639	2523
2003	57	585	4839	19316	24797	62	731	6188	6981	78	584	947	3902	5511	94	739	1409	2242
2004	61	577	4583	12713	17934	64	692	5903	6659	67	494	938	2835	4334	75	639	1394	2108
2005	47	513	4212	12225	16997	51	620	5300	5971	79	481	894	2720	4174	96	676	1329	2101
2006	50	619	4146	11919	16734	54	730	5159	5943	54	473	863	2594	3984	63	628	1330	2021
2007	45	614	4380	12504	17543	49	722	5565	6336	63	476	915	2726	4180	76	646	1396	2118
2008	40	557	4643	12516	17756	44	649	5766	6459	47	439	972	2707	4165	55	568	1408	2031
2009	36	494	4287	12640	17457	41	565	5314	5920	68	414	926	2866	4274	78	543	1304	1925
2010	44	478	4505	12971	17998	45	531	5632	6208	61	408	919	2906	4294	73	519	1275	1867
2011	41	419	4572	14088	19120	42	472	5603	6117	54	362	899	2883	4198	61	460	1293	1814
2012	29	347	4464	13915	18755	31	384	5378	5793	57	290	913	2814	4074	63	377	1246	1686
2013 ¹	41	394	4379	9242	14056	43	459	5375	5877	48	272	658	1641	2619	54	331	915	1300
2014	37	346	4328	8920	13631	38	376	5203	5617	59	248	677	1549	2533	70	335	960	1365

¹ From 2013 onwards, regional boundaries have been adjusted to the new ABS Greater Adelaide Statistical Division – For more information please look at *Preface* and *Definitions & Explanatory Notes*

ROAD CRASHES in 2014

Time Distribution
Crash Types
Definition for Coding Accidents
Crash Location
Top Intersections
Motor Vehicle Types
Involvement & Responsibility
Speed

Table 8: Crashes and Casualties during Holiday Periods by Severity

Period	Crashes					Casualties			
	Fatal Crashes	Serious Injury Crashes	Minor Injury Crashes	Property Damage Crashes	ALL CRASHES	Fatalities	Serious Injuries	Minor Injuries	ALL CASUALTIES
New Year (1 January) (1 day)	0	1	10	23	34	0	1	13	14
Australia Day Weekend (26 January – 28 January) (3 days)	1	5	40	55	101	1	7	55	63
Adelaide Cup (8 March – 10 March) (3 days)	0	5	27	70	102	0	6	38	44
Easter (18 April – 21 April) (4 days)	0	5	27	72	104	0	6	31	37
Anzac Day (25 April) (1 day)	0	4	10	21	35	0	4	15	19
Queens Birthday (7 June – 9 June) (3 days)	1	8	28	69	106	1	9	34	44
Labour Day (4 October – 6 October) (3 days)	1	4	33	58	96	1	5	53	59
Christmas/New Year (23 December – 3 January 2015 ¹) (12 days)	8	26	115	220	369	9	34	181	224
SCHOOL HOLIDAYS									
January (1 January – 27 January) (27 days)	5	48	335	677	1065	5	60	411	476
April (12 April – 27 April) (16 days)	4	34	175	399	612	5	42	225	272
July (5 July – 20 July) (16 days)	4	21	179	411	615	5	28	231	264
September (27 September – 12 October) (16 days)	4	21	177	406	608	4	26	231	261
December (13 December – 31 December) (19 days)	9	39	226	475	749	10	51	318	379

¹ 2015 data is preliminary and correct at the time of publishing

Table 9a: Casualty Crashes by Time of Day, Day of Week

Time Period	Day of Week							TOTAL
	Monday	Tuesday	Wednesday	Thursday	Friday	Saturday	Sunday	
00:00 – 01:59	10	12	11	11	12	24	34	114
02:00 – 03:59	7	8	2	9	8	15	27	76
04:00 – 05:59	13	10	13	4	10	16	14	80
06:00 – 07:59	73	81	75	63	64	26	22	404
08:00 – 09:59	148	180	134	136	116	61	46	821
10:00 – 11:59	68	80	93	78	93	122	89	623
12:00 – 13:59	83	82	81	98	97	115	99	655
14:00 – 15:59	130	152	144	136	150	91	87	890
16:00 – 17:59	154	157	195	175	179	106	71	1037
18:00 – 19:59	67	78	99	98	81	73	48	544
20:00 – 21:59	37	37	56	55	41	32	28	286
22:00 – 23:59	21	15	27	18	35	33	16	165
TOTAL	811	892	930	881	886	714	581	5695

Figure 3: Casualty Crashes by Time of Day, Day of Week

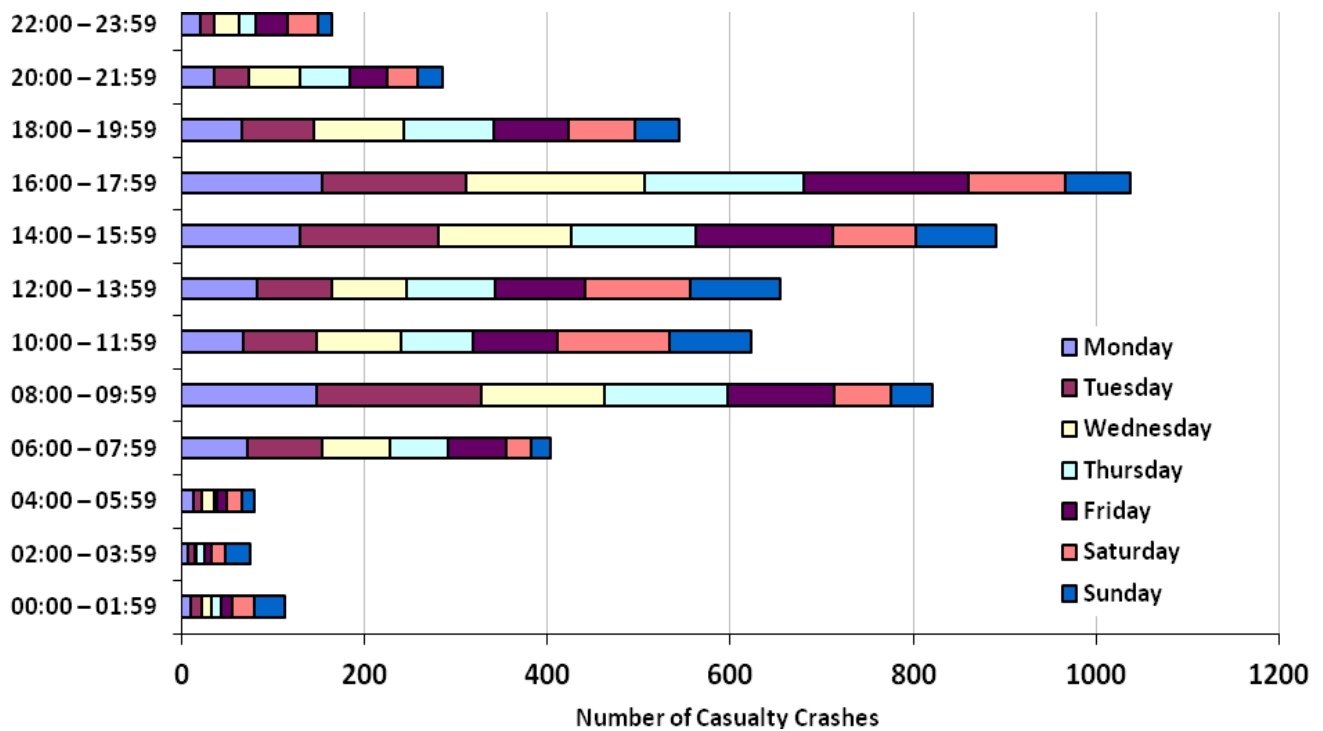


Table 9b: Casualties by Time of Day, Day of Week

Time Period	Day of Week							TOTAL
	Monday	Tuesday	Wednesday	Thursday	Friday	Saturday	Sunday	
00:00 – 01:59	17	13	14	12	14	28	46	144
02:00 – 03:59	8	9	2	10	8	19	30	86
04:00 – 05:59	15	10	15	6	12	19	15	92
06:00 – 07:59	83	85	92	72	78	35	30	475
08:00 – 09:59	169	209	160	167	131	72	51	959
10:00 – 11:59	100	97	117	90	128	151	109	792
12:00 – 13:59	111	94	101	114	125	146	125	816
14:00 – 15:59	147	190	183	164	187	105	120	1096
16:00 – 17:59	187	198	234	199	226	127	95	1266
18:00 – 19:59	80	93	112	121	103	99	62	670
20:00 – 21:59	46	46	64	80	56	44	35	371
22:00 – 23:59	27	18	33	23	42	50	22	215
TOTAL	990	1062	1127	1058	1110	895	740	6982

Table 9c: All Crashes by Time of Day, Day of Week

Time Period	Day of Week							TOTAL
	Monday	Tuesday	Wednesday	Thursday	Friday	Saturday	Sunday	
00:00 – 01:59	31	34	36	33	37	70	106	347
02:00 – 03:59	26	21	21	24	30	49	74	245
04:00 – 05:59	37	25	41	26	41	44	42	256
06:00 – 07:59	183	205	197	185	182	81	76	1109
08:00 – 09:59	343	417	367	390	344	156	113	2130
10:00 – 11:59	189	243	232	249	269	316	201	1699
12:00 – 13:59	230	224	252	292	319	327	245	1889
14:00 – 15:59	359	393	408	388	416	284	215	2463
16:00 – 17:59	424	500	509	551	523	284	208	2999
18:00 – 19:59	206	225	275	288	277	201	133	1605
20:00 – 21:59	112	111	145	136	160	120	89	873
22:00 – 23:59	55	60	69	68	116	118	63	549
TOTAL	2195	2458	2552	2630	2714	2050	1565	16164

Table 10: Crashes and Casualties by Month of Year and Severity

Month	Crashes				ALL CRASHES	Casualties			
	Fatal Crashes	Serious Injury Crashes	Minor Injury Crashes	Property Damage Crashes		Fatalities	Serious Injuries	Minor Injuries	ALL CASUALTIES
January	7	51	416	802	1276	8	66	504	578
February	5	43	483	814	1345	5	44	571	620
March	11	68	434	969	1482	12	79	528	619
April	4	54	406	828	1292	5	64	505	574
May	7	51	480	971	1509	7	61	577	645
June	5	52	381	913	1351	6	57	466	529
July	8	39	390	878	1315	9	48	499	556
August	6	54	440	846	1346	8	64	539	611
September	11	28	369	847	1255	11	38	440	489
October	9	46	403	898	1356	9	57	505	571
November	7	53	429	857	1346	8	64	527	599
December	16	55	374	846	1291	20	69	502	591
TOTAL	96	594	5005	10469	16164	108	711	6163	6982

**Table 11a: Crashes and Casualties by Crash Type and Severity
Metropolitan Adelaide**

Crash Type	Crashes				Casualties				
	Fatal Crashes	Serious Injury Crashes	Minor Injury Crashes	Property Damage Crashes	ALL CRASHES	Fatalities	Serious Injuries	Minor Injuries	ALL CASUALTIES
MULTI VEHICLE									
Head On	3	11	56	83	153	3	12	83	98
Rear End	3	35	1623	2999	4660	3	40	1962	2006
Side Swipe	0	15	328	1026	1369	0	17	364	381
Right Angle	2	62	818	1757	2639	2	67	1046	1115
Right Turn	2	31	467	759	1259	2	34	622	658
Hit Parked Vehicle	1	15	150	775	941	1	17	163	181
Sub-total	11	169	3442	7398	11021	11	187	4240	4439
SINGLE VEHICLE									
Hit Fixed Object	9	86	437	1246	1778	7	97	494	600
Hit Pedestrian	16	54	197	19	286	16	55	210	281
Hit Animal	0	1	16	50	67	0	1	16	17
Hit Object on Road	0	2	17	23	42	0	2	18	20
Roll Over	1	32	180	108	321	1	32	185	218
Left Road Out of Control	0	0	16	40	56	0	0	16	16
Other	0	2	23	35	60	0	2	24	26
Sub-total	26	177	886	1521	2610	24	189	963	1178
TOTAL	37	346	4328	8919	13631	35	376	5203	5617

**Table 11b: Crashes and Casualties by Crash Type and Severity
Rural**

Crash Type	Crashes				Casualties				
	Fatal Crashes	Serious Injury Crashes	Minor Injury Crashes	Property Damage Crashes	ALL CRASHES	Fatalities	Serious Injuries	Minor Injuries	ALL CASUALTIES
MULTI VEHICLE									
Head On	15	13	26	38	92	19	36	60	115
Rear End	1	12	60	144	217	1	15	71	87
Side Swipe	2	9	22	110	143	3	12	34	49
Right Angle	7	28	116	291	442	11	46	195	252
Right Turn	0	6	25	47	78	0	7	39	46
Hit Parked Vehicle	0	2	22	87	111	0	2	23	25
Sub-total	25	70	271	717	1083	34	118	422	574
SINGLE VEHICLE									
Hit Fixed Object	16	85	188	428	717	16	106	225	347
Hit Pedestrian	2	6	15	1	24	2	6	16	24
Hit Animal	2	6	15	163	186	2	6	19	27
Hit Object on Road	0	4	6	15	25	0	4	10	14
Roll Over	14	65	152	165	396	16	83	233	332
Left Road Out of Control	0	9	22	47	78	0	9	27	36
Other	0	3	8	13	24	0	3	8	11
Sub-total	34	178	406	832	1450	36	217	538	791
TOTAL	59	248	677	1549	2533	70	335	960	1365

**Table 11c: Crashes and Casualties by Crash Type and Severity
South Australia**

Crash Type	Crashes				Casualties				
	Fatal Crashes	Serious Injury Crashes	Minor Injury Crashes	Property Damage Crashes	ALL CRASHES	Fatalities	Serious Injuries	Minor Injuries	ALL CASUALTIES
MULTI VEHICLE									
Head On	18	24	82	121	245	22	48	143	213
Rear End	4	47	1683	3143	4877	5	55	2033	2093
Side Swipe	2	24	349	1136	1511	3	29	397	429
Right Angle	9	90	934	2048	3081	13	113	1241	1367
Right Turn	2	37	493	806	1338	2	41	662	705
Hit Parked Vehicle	1	17	172	862	1052	1	19	186	206
Sub-total	36	239	3713	8116	12104	46	305	4662	5013
SINGLE VEHICLE									
Hit Fixed Object	25	171	625	1674	2495	25	203	719	947
Hit Pedestrian	18	60	212	20	310	18	61	226	305
Hit Animal	2	7	31	213	253	2	7	35	44
Hit Object on Road	0	6	23	38	67	0	6	28	34
Roll Over	15	97	332	273	717	17	115	418	550
Left Road Out of Control	0	9	38	87	134	0	9	43	52
Other	0	5	31	48	84	0	5	32	37
Sub-total	60	355	1292	2353	4060	62	406	1501	1969
TOTAL	96	594	5005	10469	16164	108	711	6163	6982

Table 12: Hit Object Crashes by Object First Hit and Severity

Type of Fixed Object	Fatal Crashes	Serious Injury Crashes	Minor Injury Crashes	Property Damage Crashes	ALL CRASHES
Tree		16	83	242	795
Traffic Signal Pole		0	0	10	56
Pole - not Stobie		0	10	29	137
Bridge		0	1	1	6
Sign Post		1	6	16	91
Stobie Pole		1	17	74	260
Other Fixed Obstruction		6	44	202	952
Guard Rail		1	10	47	177
Wire Rope Barrier		0	0	4	21
TOTAL		25	171	625	2495

Table 13: Single Vehicle Crashes by Motor Vehicle Type & Severity

Vehicle Type ¹	Fatal Crashes	Serious Injury Crashes	Minor Injury Crashes	Property Damage Crashes	ALL CRASHES
Passenger Vehicle	50	239	933	2111	3333
Light Truck (>4.5 Tonnes)	0	0	3	9	12
Heavy Vehicle	5	9	29	112	155
Buses	0	1	18	9	28
Motorcycles	4	81	206	91	382
Bicycles	1	24	98	21	144
Other	0	0	0	0	0
TOTAL	60	354	1287	2353	4054

¹ 2014 total excludes six crashes that involved gopher riders

Figure 4: Definition for Coding Accidents¹

<p>100</p> <p>NEAR SIDE</p>	<p>110</p> <p>CROSS TRAFFIC</p>	<p>120</p> <p>HEAD ON (NOT OVERTAKING)</p>	<p>130</p> <p>VEHICLES IN SAME LANES</p>	<p>140</p> <p>U-TURN</p>	<p>150</p> <p>HEAD ON (INCL. SIDE SWIPE)</p>	<p>160</p> <p>PARKED</p>	<p>170</p> <p>OFF CARRIAGEWAY INTO OBJECT/PARKED VEHICLE</p>	<p>180</p> <p>OFF CARRIAGEWAY RIGHT BEND</p>	<p>190</p> <p>FELL IN/FROM VEHICLE</p>
<p>101</p> <p>EMERGING</p>	<p>111</p> <p>RIGHT/LEFT</p>	<p>121</p> <p>RIGHT THRU</p>	<p>131</p> <p>LEFT REAR</p>	<p>141</p> <p>PULLING INTO PARKED OBJECT/PARKED VEHICLE</p>	<p>151</p> <p>OUT OF CONTROL</p>	<p>161</p> <p>DOUBLE PARKED</p>	<p>171</p> <p>LEFT OFF CARRIAGEWAY INTO OBJECT/PARKED VEHICLE</p>	<p>181</p> <p>OFF RIGHT BEND INTO OBJECT/PARKED VEHICLE</p>	<p>191</p> <p>LOAD OR MISSILE STRUCK VEHICLE</p>
<p>102</p> <p>FAR SIDE</p>	<p>112</p> <p>LEFT/RIGHT</p>	<p>122</p> <p>LEFT THRU</p>	<p>132</p> <p>RIGHT END</p>	<p>142</p> <p>LEAVING PARKING</p>	<p>152</p> <p>PULLING OUT</p>	<p>162</p> <p>ACCIDENT OR BROKEN DOWN</p>	<p>172</p> <p>OFF CARRIAGEWAY TO RIGHT</p>	<p>182</p> <p>OFF CARRIAGEWAY LEFT BEND</p>	<p>192</p> <p>STRUCK TRAIN</p>
<p>103</p> <p>Playing, pushing, hitting, standing on carapass</p>	<p>113</p> <p>RIGHT/NEAR</p>	<p>123</p> <p>RIGHT LEFT</p>	<p>133</p> <p>LANE SIDE SWIPE</p>	<p>143</p> <p>ENTERING PARKING</p>	<p>153</p> <p>CUTTING IN</p>	<p>163</p> <p>VEHICLE DOOR</p>	<p>173</p> <p>RIGHT OFF CARRIAGEWAY INTO OBJECT/PARKED VEHICLE</p>	<p>183</p> <p>OFF LEFT BEND INTO OBJECT/PARKED VEHICLE</p>	<p>193</p> <p>STRUCK RAILWAY CROSSING FURNITURE</p>
<p>104</p> <p>WALKING WITH TRAFFIC</p>	<p>114</p> <p>TWO RIGHT TURNING</p>	<p>124</p> <p>RIGHT/RIGHT (NOT REVERSING)</p>	<p>134</p> <p>LANE CHANGE RIGHT (NOT REVERSING)</p>	<p>144</p> <p>PASSING VEHICLES ONLY</p>	<p>154</p> <p>PULLING OUT - DEAD END</p>	<p>164</p> <p>PERMANENT OBSTRUCTION ON CARRIAGEWAY</p>	<p>174</p> <p>OUT OF CONTROL ON CARRIAGEWAY</p>	<p>184</p> <p>OUT OF CONTROL ON CARRIAGEWAY</p>	<p>194</p> <p>PARKED CAR MOVED AWAY</p>
<p>105</p> <p>FACING TRAFFIC</p>	<p>115</p> <p>RIGHT/LEFT/NEAR</p>	<p>125</p> <p>LEFT LEFT</p>	<p>135</p> <p>LANE CHANGE LEFT</p>	<p>145</p> <p>REVERSING</p>	<p>155</p> <p>TEMPORARY ROADWORKS</p>	<p>165</p> <p>TEMPORARY ROADWORKS</p>	<p>175</p> <p>OFF END OF ROAD/INTERSECTION</p>	<p>185</p> <p>OFF END OF ROAD/INTERSECTION</p>	<p>195</p> <p>OFF END OF ROAD/INTERSECTION</p>
<p>106</p> <p>ON FOOTPATH/MEDIAN</p>	<p>116</p> <p>LEFT/REAR</p>	<p>126</p> <p>RIGHT TURN SIDE SWIPE</p>	<p>136</p> <p>RIGHT TURN SIDE SWIPE</p>	<p>146</p> <p>REVERSING INTO PARKED OBJECT/PARKED VEHICLE INCLUDES DRIVEWAYS</p>	<p>156</p> <p>REVERSING INTO PARKED OBJECT/PARKED VEHICLE INCLUDES DRIVEWAYS</p>	<p>166</p> <p>STRUCK OBJECT ON CARRIAGEWAY</p>	<p>176</p> <p>STRUCK OBJECT ON CARRIAGEWAY</p>	<p>186</p> <p>STRUCK OBJECT ON CARRIAGEWAY</p>	<p>196</p> <p>STRUCK OBJECT ON CARRIAGEWAY</p>
<p>107</p> <p>DRIVEWAY</p>	<p>117</p> <p>RIGHT/LEFT/NEAR</p>	<p>127</p> <p>LEFT TURN SIDE SWIPE</p>	<p>137</p> <p>LEFT TURN SIDE SWIPE</p>	<p>147</p> <p>REVERSING INTO PARKED OBJECT/PARKED VEHICLE INCLUDES DRIVEWAYS</p>	<p>157</p> <p>REVERSING INTO PARKED OBJECT/PARKED VEHICLE INCLUDES DRIVEWAYS</p>	<p>167</p> <p>ANIMAL (NOT ROAD SIGN)</p>	<p>177</p> <p>ANIMAL (NOT ROAD SIGN)</p>	<p>187</p> <p>ANIMAL (NOT ROAD SIGN)</p>	<p>197</p> <p>ANIMAL (NOT ROAD SIGN)</p>
<p>108</p> <p>BOARDING & STRUCK BY SAME THIS INCLUDES WORKING/PUSHING VEHICLE</p>	<p>118</p> <p>TWO LEFT TURN</p>	<p>128</p> <p>OTHER SAME DIRECTION</p>	<p>138</p> <p>OTHER SAME DIRECTION</p>	<p>148</p> <p>REVERSING INTO PARKED OBJECT/PARKED VEHICLE INCLUDES DRIVEWAYS</p>	<p>158</p> <p>REVERSING INTO PARKED OBJECT/PARKED VEHICLE INCLUDES DRIVEWAYS</p>	<p>168</p> <p>ANIMAL (NOT ROAD SIGN)</p>	<p>178</p> <p>ANIMAL (NOT ROAD SIGN)</p>	<p>188</p> <p>ANIMAL (NOT ROAD SIGN)</p>	<p>198</p> <p>ANIMAL (NOT ROAD SIGN)</p>
<p>109</p> <p>BOARDING & STRUCK BY SAME THIS INCLUDES WORKING/PUSHING VEHICLE</p>	<p>119</p> <p>OTHER ADJACENT</p>	<p>129</p> <p>OTHER CROSSING</p>	<p>139</p> <p>OTHER SAME DIRECTION</p>	<p>149</p> <p>REVERSING INTO PARKED OBJECT/PARKED VEHICLE INCLUDES DRIVEWAYS</p>	<p>159</p> <p>REVERSING INTO PARKED OBJECT/PARKED VEHICLE INCLUDES DRIVEWAYS</p>	<p>169</p> <p>ANIMAL (NOT ROAD SIGN)</p>	<p>179</p> <p>ANIMAL (NOT ROAD SIGN)</p>	<p>189</p> <p>ANIMAL (NOT ROAD SIGN)</p>	<p>199</p> <p>ANIMAL (NOT ROAD SIGN)</p>

¹ Definition for Coding Accidents – For more information please look at *Preface* and *Definitions & Explanatory Notes*

Table 14a: Crashes and Casualties by DCA: Metropolitan Adelaide

Location Type	Crashes					Casualties			
	Fatal Crashes	Serious Injury Crashes	Minor Injury Crashes	Property Damage Crashes	ALL CRASHES	Fatalities	Serious Injuries	Minor Injuries	ALL CASUALTIES
PEDESTRIANS									
100	5	24	76	8	113	5	24	80	109
101	0	2	9	0	11	0	2	10	12
102	4	11	51	5	71	4	11	52	67
103	3	2	9	1	15	3	2	10	15
104	1	0	1	0	2	1	0	2	3
105	0	0	1	0	1	0	0	1	1
106	1	3	7	0	11	1	4	11	16
107	0	3	17	4	24	0	3	17	20
108	0	1	2	0	3	0	1	2	3
109	2	9	30	1	42	2	9	31	42
Sub-total	16	55	203	19	293	16	56	216	288
ADJ DIRECTIONS									
110	0	17	237	397	651	0	20	328	348
111	0	3	52	150	205	0	4	65	69
112	0	1	3	15	19	0	1	3	4
113	2	29	277	517	825	2	29	359	390
114	0	2	13	39	54	0	2	16	18
115	0	0	5	15	20	0	0	5	5
116	0	5	78	190	273	0	6	90	96
117	0	0	0	1	1	0	0	0	0
118	0	0	0	2	2	0	0	0	0
119	0	0	15	37	52	0	0	16	16
Sub-total	2	57	680	1363	2102	2	62	882	946
OPP DIRECTIONS									
120	3	11	61	82	157	3	12	83	98
121	2	32	458	717	1209	2	35	614	651
122	0	0	0	2	2	0	0	0	0
123	0	0	10	20	30	0	0	11	11
124	0	0	2	6	8	0	0	2	2
125	0	0	0	0	0	0	0	0	0
129	0	0	4	8	12	0	0	4	4
Sub-total	5	43	535	835	1418	5	47	714	766
SAME DIRECTION									
130	2	26	1250	2357	3635	2	29	1522	1553
131	1	6	196	272	475	2	8	227	237
132	0	3	164	300	467	0	3	199	202
133	0	3	49	156	208	0	3	57	60
134	0	2	48	180	230	0	2	53	55
135	0	0	46	178	224	0	0	50	50
136	0	1	14	63	78	0	1	15	16
137	0	2	58	135	195	0	2	58	60
139	0	0	9	20	29	0	0	11	11
Sub-total	3	43	1834	3661	5541	4	48	2192	2244
MANOEUVERING									
140	0	4	69	165	238	0	4	81	85
141	0	0	2	21	23	0	0	3	3
142	0	0	21	87	108	0	0	22	22
143	0	1	7	13	21	0	1	7	8
144	0	0	2	50	52	0	0	2	2
145	0	0	7	58	65	0	0	7	7

Table 14a: Crashes and Casualties by DCA: Metropolitan Adelaide

Location Type	Crashes					Casualties			
	Fatal Crashes	Serious Injury Crashes	Minor Injury Crashes	Property Damage Crashes	ALL CRASHES	Fatalities	Serious Injuries	Minor Injuries	ALL CASUALTIES
146	1	1	11	103	116	1	1	11	13
147	0	3	97	311	411	0	3	120	123
148	0	1	22	16	39	0	1	22	23
149	0	0	6	37	43	0	0	6	6
Subtotal	1	10	244	861	1116	1	10	281	292
OVERTAKING									
150	0	0	1	0	1	0	0	5	5
151	0	0	4	7	11	0	0	4	4
152	0	1	11	43	55	0	3	16	19
153	0	1	0	8	9	0	1	0	1
154	0	0	5	6	11	0	0	5	5
159	0	0	6	34	40	0	0	7	7
Sub-total	0	2	27	98	127	0	4	37	41
ON PATH									
160	1	12	99	527	639	1	13	109	123
161	0	0	0	0	0	0	0	0	0
162	0	0	2	1	3	0	0	2	2
163	0	2	30	33	65	0	2	30	32
164	0	0	4	16	20	0	0	4	4
165	0	0	3	1	4	0	0	3	3
166	0	2	13	22	37	0	2	14	16
167	0	1	16	50	67	0	1	16	17
169	0	2	17	84	103	0	3	19	22
Sub-total	1	19	184	734	938	1	21	197	219
OFF PATH, STRGT									
170	0	2	8	18	28	0	2	8	10
171	3	27	185	511	726	3	29	202	234
172	0	0	4	3	7	0	0	4	4
173	1	10	73	237	321	1	11	83	95
174	0	17	106	40	163	0	17	108	125
175	0	2	9	37	48	0	3	9	12
179	0	1	9	23	33	0	1	9	10
Sub-total	4	59	394	869	1326	4	63	423	490
OFF PATH, CURVE									
180	0	4	15	24	43	0	4	15	19
181	2	22	95	180	299	2	24	107	133
182	0	2	10	20	32	0	2	10	12
183	3	24	60	155	242	3	29	79	111
184	0	4	25	23	52	0	4	27	31
189	0	0	1	5	6	0	0	1	1
Sub-total	5	56	206	407	674	5	63	239	307
MISCELLANEOUS									
190	0	0	15	0	15	0	0	16	16
191	0	1	3	20	24	0	1	3	4
192	0	0	0	5	5	0	0	0	0
193	0	1	1	5	7	0	1	1	2
194	0	0	0	30	30	0	0	0	0
199	0	0	2	13	15	0	0	2	2
Subtotal	0	2	21	73	96	0	2	22	24
TOTAL	37	346	4328	8920	13631	38	376	5203	5617

Table 14b: Crashes and Casualties by DCA: Rural

Location Type	Crashes					Casualties			
	Fatal Crashes	Serious Injury Crashes	Minor Injury Crashes	Property Damage Crashes	ALL CRASHES	Fatalities	Serious Injuries	Minor Injuries	ALL CASUALTIES
PEDESTRIANS									
100	1	3	3	1	8	1	3	3	7
101	0	0	0	0	0	0	0	0	0
102	0	1	3	0	4	0	1	4	5
103	1	1	1	0	3	1	1	1	3
104	0	0	0	0	0	0	0	0	0
105	0	0	0	0	0	0	0	0	0
106	0	0	3	0	3	0	0	3	3
107	0	1	0	0	1	0	1	0	1
108	0	0	0	0	0	0	0	0	0
109	0	0	5	0	5	0	0	5	5
Sub-total	2	6	15	1	24	2	6	16	24
ADJ DIRECTIONS									
110	3	13	48	116	180	3	21	87	111
111	0	3	4	27	34	0	4	9	13
112	0	0	0	4	4	0	0	0	0
113	3	7	28	54	92	6	14	55	75
114	0	0	1	3	4	0	0	1	1
115	0	1	1	1	3	0	1	1	2
116	0	0	7	17	24	0	0	9	9
117	0	0	0	0	0	0	0	0	0
118	0	0	0	0	0	0	0	0	0
119	0	2	3	2	7	0	2	3	5
Sub-total	6	26	92	224	348	9	42	165	216
OPP DIRECTIONS									
120	15	13	27	35	90	19	36	66	121
121	0	6	26	42	74	0	7	41	48
122	0	0	0	0	0	0	0	0	0
123	0	1	0	2	3	0	1	0	1
124	0	0	0	0	0	0	0	0	0
125	0	0	0	0	0	0	0	0	0
129	0	0	0	0	0	0	0	0	0
Sub-total	15	20	53	79	167	19	44	107	170
SAME DIRECTION									
130	1	5	32	83	121	1	5	38	44
131	0	0	5	16	21	0	0	6	6
132	0	5	21	40	66	0	5	23	28
133	0	0	0	6	6	0	0	0	0
134	0	0	2	7	9	0	0	2	2
135	0	0	0	8	8	0	0	0	0
136	0	0	1	5	6	0	0	3	3
137	0	0	0	7	7	0	0	0	0
139	0	1	2	4	7	0	1	4	5
Sub-total	1	11	63	176	251	1	11	76	88
MANOEVERTING									
140	0	5	11	28	44	0	5	16	21
141	0	0	1	1	2	0	0	1	1
142	0	1	1	28	30	0	2	1	3
143	0	0	0	2	2	0	0	0	0
144	0	0	0	12	12	0	0	0	0
145	0	0	1	4	5	0	0	1	1

Table 14b: Crashes and Casualties by DCA: Rural

Location Type	Crashes					Casualties			
	Fatal Crashes	Serious Injury Crashes	Minor Injury Crashes	Property Damage Crashes	ALL CRASHES	Fatalities	Serious Injuries	Minor Injuries	ALL CASUALTIES
146	0	0	4	16	20	0	0	4	4
147	1	1	16	50	68	2	3	20	25
148	0	0	5	2	7	0	0	6	6
149	0	1	2	12	15	0	1	2	3
Subtotal	1	8	41	155	205	2	11	51	64
OVERTAKING									
150	1	0	0	3	4	1	0	1	2
151	1	1	2	5	9	1	2	2	5
152	1	2	3	17	23	1	3	5	9
153	0	1	1	1	3	0	1	2	3
154	0	1	0	1	2	0	4	0	4
159	1	0	4	9	14	2	1	6	9
Sub-total	4	5	10	36	55	5	11	16	32
ON PATH									
160	0	1	13	52	66	0	1	14	15
161	0	0	0	0	0	0	0	0	0
162	0	0	0	0	0	0	0	0	0
163	0	0	5	3	8	0	0	5	5
164	0	0	0	2	2	0	0	0	0
165	0	0	2	0	2	0	0	3	3
166	0	4	4	12	20	0	4	4	8
167	1	6	15	163	185	1	6	17	24
169	0	1	0	10	11	0	1	0	1
Sub-total	1	12	39	242	294	1	12	43	56
OFF PATH, STRGT									
170	3	15	36	58	112	4	25	49	78
171	5	29	60	169	263	5	35	75	115
172	1	4	17	27	49	1	4	22	27
173	1	15	45	52	113	1	17	54	72
174	1	15	31	28	75	2	20	49	71
175	0	4	9	14	27	0	4	11	15
179	0	1	3	2	6	0	1	4	5
Sub-total	11	83	201	350	645	13	106	264	383
OFF PATH, CURVE									
180	2	18	30	21	71	2	20	46	68
181	10	30	42	111	193	10	37	54	101
182	1	6	15	38	60	1	6	23	30
183	3	13	39	79	134	3	19	45	67
184	1	5	27	15	48	1	5	41	47
189	1	2	0	0	3	1	2	3	6
Sub-total	18	74	153	264	509	18	89	212	319
MISCELLANEOUS									
190	0	2	6	0	8	0	2	6	8
191	0	0	1	7	8	0	0	1	1
192	0	0	0	1	1	0	0	0	0
193	0	0	1	1	2	0	0	1	1
194	0	0	1	9	10	0	0	1	1
199	0	1	1	4	6	0	1	1	2
Subtotal	0	3	10	22	35	0	3	10	13
TOTAL	59	248	677	1549	2533	70	335	960	1365

Table 14c: Crashes and Casualties by DCA: South Australia

Location Type	Crashes					Casualties			
	Fatal Crashes	Serious Injury Crashes	Minor Injury Crashes	Property Damage Crashes	ALL CRASHES	Fatalities	Serious Injuries	Minor Injuries	ALL CASUALTIES
PEDESTRIANS									
100	6	27	79	9	121	6	27	83	116
101	0	2	9	0	11	0	2	10	12
102	4	12	54	5	75	4	12	56	72
103	4	3	10	1	18	4	3	11	18
104	1	0	1	0	2	1	0	2	3
105	0	0	1	0	1	0	0	1	1
106	1	3	10	0	14	1	4	14	19
107	0	4	17	4	25	0	4	17	21
108	0	1	2	0	3	0	1	2	3
109	2	9	35	1	47	2	9	36	47
Sub-total	18	61	218	20	317	18	62	232	312
ADJ DIRECTIONS									
110	3	30	285	513	831	3	41	415	459
111	0	6	56	177	239	0	8	74	82
112	0	1	3	19	23	0	1	3	4
113	5	36	305	571	917	8	43	414	465
114	0	2	14	42	58	0	2	17	19
115	0	1	6	16	23	0	1	6	7
116	0	5	85	207	297	0	6	99	105
117	0	0	0	1	1	0	0	0	0
118	0	0	0	2	2	0	0	0	0
119	0	2	18	39	59	0	2	19	21
Sub-total	8	83	772	1587	2450	11	104	1047	1162
OPP DIRECTIONS									
120	18	24	88	117	247	22	48	149	219
121	2	38	484	759	1283	2	42	655	699
122	0	0	0	2	2	0	0	0	0
123	0	1	10	22	33	0	1	11	12
124	0	0	2	6	8	0	0	2	2
125	0	0	0	0	0	0	0	0	0
129	0	0	4	8	12	0	0	4	4
Sub-total	20	63	588	914	1585	24	91	821	936
SAME DIRECTION									
130	3	31	1282	2440	3756	3	34	1560	1597
131	1	6	201	288	496	2	8	233	243
132	0	8	185	340	533	0	8	222	230
133	0	3	49	162	214	0	3	57	60
134	0	2	50	187	239	0	2	55	57
135	0	0	46	186	232	0	0	50	50
136	0	1	15	68	84	0	1	18	19
137	0	2	58	142	202	0	2	58	60
139	0	1	11	24	36	0	1	15	16
Sub-total	4	54	1897	3837	5792	5	59	2268	2332
MANOEUVERING									
140	0	9	80	193	282	0	9	97	106
141	0	0	3	22	25	0	0	4	4
142	0	1	22	115	138	0	2	23	25
143	0	1	7	15	23	0	1	7	8
144	0	0	2	62	64	0	0	2	2
145	0	0	8	62	70	0	0	8	8

Table 14c: Crashes and Casualties by DCA: South Australia

Location Type	Crashes					Casualties			
	Fatal Crashes	Serious Injury Crashes	Minor Injury Crashes	Property Damage Crashes	ALL CRASHES	Fatalities	Serious Injuries	Minor Injuries	ALL CASUALTIES
146	1	1	15	119	136	1	1	15	17
147	1	4	113	361	479	2	6	140	148
148	0	1	27	18	46	0	1	28	29
149	0	1	8	49	58	0	1	8	9
Subtotal	2	18	285	1016	1321	3	21	332	356
OVERTAKING									
150	1	0	1	3	5	1	0	6	7
151	1	1	6	12	20	1	2	6	9
152	1	3	14	60	78	1	6	21	28
153	0	2	1	9	12	0	2	2	4
154	0	1	5	7	13	0	4	5	9
159	1	0	10	43	54	2	1	13	16
Sub-total	4	7	37	134	182	5	15	53	73
ON PATH									
160	1	13	112	579	705	1	14	123	138
161	0	0	0	0	0	0	0	0	0
162	0	0	2	1	3	0	0	2	2
163	0	2	35	36	73	0	2	35	37
164	0	0	4	18	22	0	0	4	4
165	0	0	5	1	6	0	0	6	6
166	0	6	17	34	57	0	6	18	24
167	1	7	31	213	252	1	7	33	41
169	0	3	17	94	114	0	4	19	23
Sub-total	2	31	223	976	1232	2	33	240	275
OFF PATH, STRGT									
170	3	17	44	76	140	4	27	57	88
171	8	56	245	680	989	8	64	277	349
172	1	4	21	30	56	1	4	26	31
173	2	25	118	289	434	2	28	137	167
174	1	32	137	68	238	2	37	157	196
175	0	6	18	51	75	0	7	20	27
179	0	2	12	25	39	0	2	13	15
Sub-total	15	142	595	1219	1971	17	169	687	873
OFF PATH, CURVE									
180	2	22	45	45	114	2	24	61	87
181	12	52	137	291	492	12	61	161	234
182	1	8	25	58	92	1	8	33	42
183	6	37	99	234	376	6	48	124	178
184	1	9	52	38	100	1	9	68	78
189	1	2	1	5	9	1	2	4	7
Sub-total	23	130	359	671	1183	23	152	451	626
MISCELLANEOUS									
190	0	2	21	0	23	0	2	22	24
191	0	1	4	27	32	0	1	4	5
192	0	0	0	6	6	0	0	0	0
193	0	1	2	6	9	0	1	2	3
194	0	0	1	39	40	0	0	1	1
199	0	1	3	17	21	0	1	3	4
Subtotal	0	5	31	95	131	0	5	32	37
TOTAL	96	594	5005	10469	16164	108	711	6163	6982

**Table 15a: Crashes and Casualties by Location Type and Severity
Metropolitan Adelaide**

Location Type	Crashes					Casualties			
	Fatal Crashes	Serious Injury Crashes	Minor Injury Crashes	Property Damage Crashes	ALL CRASHES	Fatalities	Serious Injuries	Minor Injuries	ALL CASUALTIES
INTERSECTION									
Interchange	0	0	5	15	20	0	0	5	5
Cross Road	6	49	1169	2103	3327	7	58	1432	1497
Y-Junction	0	0	6	8	14	0	0	7	7
T-Junction	4	103	1206	2360	3673	4	108	1477	1589
Multiple	0	0	56	100	156	0	0	72	72
Rail Xing	0	1	5	9	15	0	1	5	6
Sub-total	10	153	2447	4595	7205	11	167	2998	3176
MID BLOCK									
Crossover	0	0	0	1	1	0	0	0	0
Rail Crossing	0	2	7	29	38	0	2	7	9
Divided Road	13	70	888	1811	2782	13	78	1060	1151
Not Divided	13	116	899	2293	3321	13	124	1034	1171
One Way	0	0	2	5	7	0	0	3	3
Freeway	0	3	38	121	162	0	3	43	46
Ramp On	0	0	4	5	9	0	0	5	5
Ramp Off	0	0	6	9	15	0	0	8	8
Ped. Crossing	1	0	35	50	86	1	0	43	44
Other	0	2	2	1	5	0	2	2	4
Sub-total	27	193	1881	4325	6426	27	209	2205	2441
TOTAL	37	346	4328	8920	13631	38	376	5203	5617

**Table 15b: Crashes and Casualties by Location Type and Severity
Rural**

Location Type	Crashes					Casualties			
	Fatal Crashes	Serious Injury Crashes	Minor Injury Crashes	Property Damage Crashes	ALL CRASHES	Fatalities	Serious Injuries	Minor Injuries	ALL CASUALTIES
INTERSECTION									
Interchange	0	0	1	0	1	0	0	1	1
Cross Road	3	26	102	227	358	3	34	163	200
Y- Junction	0	0	0	1	1	0	0	0	0
T-Junction	5	29	102	212	348	9	40	152	201
Multiple	1	1	0	11	13	1	3	2	6
Sub-total	9	56	205	451	721	13	77	318	408
MID BLOCK									
Crossover	0	0	0	1	1	0	0	0	0
Rail Crossing	0	0	4	3	7	0	0	4	4
Divided Road	3	4	23	78	108	4	9	33	46
Not Divided	47	186	437	1004	1674	53	246	593	892
One Way	0	0	1	1	2	0	0	1	1
Freeway	0	1	5	8	14	0	2	8	10
Ramp On	0	0	1	1	2	0	0	1	1
Ped. Crossing	0	0	1	1	2	0	0	1	1
Other	0	1	0	1	2	0	1	1	2
Sub-total	50	192	472	1098	1812	57	258	642	957
TOTAL	59	248	677	1549	2533	70	335	960	1365

**Table 15c: Crashes and Casualties by Location Type and Severity
South Australia**

Location Type	Crashes					Casualties			
	Fatal Crashes	Serious Injury Crashes	Minor Injury Crashes	Property Damage Crashes	ALL CRASHES	Fatalities	Serious Injuries	Minor Injuries	ALL CASUALTIES
INTERSECTION									
Interchange	0	0	6	15	21	0	0	6	6
Cross Road	9	75	1271	2330	3685	10	92	1595	1697
Y- Junction	0	0	6	9	15	0	0	7	7
T-Junction	9	132	1308	2572	4021	13	148	1629	1790
Multiple	1	1	56	111	169	1	3	74	78
Rail Crossing	0	1	5	9	15	0	1	5	6
Sub-total	19	209	2652	5046	7926	24	244	3316	3584
MID BLOCK									
Crossover	0	0	0	2	2	0	0	0	0
Rail Crossing	0	2	11	32	45	0	2	11	13
Divided Road	16	74	911	1889	2890	17	87	1093	1197
Not Divided	60	302	1336	3297	4995	66	370	1627	2063
One Way	0	0	3	6	9	0	0	4	4
Freeway	0	4	43	129	176	0	5	51	56
Ramp On	0	0	5	6	11	0	0	6	6
Ramp Off	0	0	6	9	15	0	0	8	8
Ped. Crossing	1	0	36	51	88	1	0	44	45
Other	0	3	2	2	7	0	3	3	6
Sub-total	77	385	2353	5423	8238	84	467	2847	3398
TOTAL	96	594	5005	10469	16164	108	711	6163	6982

**Table 16a: Crashes and Casualties by Traffic Control and Severity
Metropolitan Adelaide**

Traffic Control	Crashes					Casualties			
	Fatal Crashes	Serious Injury Crashes	Minor Injury Crashes	Property Damage Crashes	ALL CRASHES	Fatalities	Serious Injuries	Minor Injuries	ALL CASUALTIES
INTERSECTION									
Traffic Signals	6	42	1055	1911	3014	7	50	1291	1348
Give Way Sign	1	26	319	543	889	1	28	418	447
Stop Sign	0	13	195	350	558	0	14	232	246
Roundabout	0	7	187	348	542	0	7	200	207
No Control	3	65	691	1443	2202	3	68	857	928
Sub-total	10	153	2447	4595	7205	11	167	2998	3176
MID BLOCK									
Traffic Signals	1	3	47	77	128	1	3	55	59
Give Way Sign	0	0	0	1	1	0	0	0	0
Roundabout	0	0	0	1	1	0	0	0	0
No Control	26	188	1826	4217	6257	26	204	2141	2371
Rail Xing-Boom	0	2	5	19	26	0	2	5	7
Rail Xing-Flashing	0	0	0	3	3	0	0	0	0
Rail Xing-Traffic Signals	0	0	2	7	9	0	0	2	2
Rail Xing-No Control	0	0	1	0	1	0	0	2	2
Sub-total	27	193	1881	4325	6426	27	209	2205	2441
TOTAL	37	346	4328	8920	13631	38	376	5203	5617

**Table 16b: Crashes and Casualties by Traffic Control and Severity
Rural**

Traffic Control	Crashes					Casualties			
	Fatal Crashes	Serious Injury Crashes	Minor Injury Crashes	Property Damage Crashes	ALL CRASHES	Fatalities	Serious Injuries	Minor Injuries	ALL CASUALTIES
INTERSECTION									
Traffic Signals	0	1	11	41	53	0	1	17	18
Give Way Sign	6	30	80	172	288	9	45	134	188
Stop Sign	0	2	13	34	49	0	2	25	27
Roundabout	0	0	16	45	61	0	0	19	19
No Control	3	23	85	159	270	4	29	123	156
Sub-total	9	56	205	451	721	13	77	318	408
MID BLOCK									
Traffic Signals	0	0	2	3	5	0	0	2	2
Give Way Sign	0	1	1	2	4	0	1	1	2
No Control	50	191	466	1091	1798	57	257	636	950
Rail Xing-Flashing	0	0	3	2	5	0	0	3	3
Sub-total	50	192	472	1098	1812	57	258	642	957
TOTAL	59	248	677	1549	2533	70	335	960	1365

**Table 16c: Crashes and Casualties by Traffic Control and Severity
South Australia**

Traffic Control	Crashes					Casualties			
	Fatal Crashes	Serious Injury Crashes	Minor Injury Crashes	Property Damage Crashes	ALL CRASHES	Fatalities	Serious Injuries	Minor Injuries	ALL CASUALTIES
INTERSECTION									
Traffic Signals	6	43	1066	1952	3067	7	51	1308	1366
Give Way Sign	7	56	399	715	1177	10	73	552	635
Stop Sign	0	15	208	384	607	0	16	257	273
Roundabout	0	7	203	393	603	0	7	219	226
No Control	6	88	776	1602	2472	7	97	980	1084
Sub-total	19	209	2652	5046	7926	24	244	3316	3584
MID BLOCK									
Traffic Signals	1	3	49	80	133	1	3	57	61
Give Way Sign	0	1	1	3	5	0	1	1	2
Roundabout	0	0	0	1	1	0	0	0	0
No Control	76	379	2292	5308	8055	83	461	2777	3321
Rail Xing-Boom	0	2	5	19	26	0	2	5	7
Rail Xing-Flashing	0	0	3	5	8	0	0	3	3
Rail Xing-Traffic Signals	0	0	2	7	9	0	0	2	2
Other	0	0	1	0	1	0	0	2	2
Sub-total	77	385	2353	5423	8238	84	467	2847	3398
TOTAL	96	594	5005	10469	16164	108	711	6163	6982

Table 17: Crashes and Casualties by Area Speed Limit, Region & Severity

Area Speed Limit	Crashes					Casualties			
	Fatal Crashes	Serious Injury Crashes	Minor Injury Crashes	Property Damage Crashes	ALL CRASHES	Fatalities	Serious Injuries	Minor Injuries	ALL CASUALTIES
METROPOLITAN									
<50km/h	1	7	74	138	220	1	7	98	106
50km/h	6	109	990	2615	3720	6	112	1103	1221
60km/h	23	148	2471	4762	7404	24	161	3006	3191
70km/h	1	13	189	334	537	1	16	228	245
80km/h	2	50	435	727	1214	2	56	549	607
90km/h	0	3	66	149	218	0	3	87	90
100km/h	3	14	76	124	217	3	18	97	118
110km/h	1	2	27	71	101	1	3	35	39
Sub-total	37	346	4328	8920	13631	38	376	5203	5617
RURAL									
<50km/h	0	6	4	11	21	0	6	6	12
50km/h	1	38	177	458	674	1	40	223	264
60km/h	1	15	80	208	304	1	17	95	113
70km/h	0	0	0	0	0	0	0	0	0
80km/h	3	21	59	125	208	3	27	80	110
90km/h	2	5	4	13	24	2	6	7	15
100km/h	29	97	189	404	719	29	129	291	449
110km/h	23	66	164	330	583	34	110	258	402
Sub-total	59	248	677	1549	2533	70	335	960	1365
TOTAL	96	594	5005	10469	16164	108	711	6163	6982

Table 18: Crashes and Casualties by Light Condition, Region & Severity

Light Conditions ¹ & Region	Crashes					Casualties			
	Fatal Crashes	Serious Injury Crashes	Minor Injury Crashes	Property Damage Crashes	ALL CRASHES	Fatalities	Serious Injuries	Minor Injuries	ALL CASUALTIES
METROPOLITAN									
Daylight	20	239	3518	6929	10706	21	254	4208	4483
Night	17	107	810	1991	2925	17	122	995	1134
Sub-total	37	346	4328	8920	13631	38	376	5203	5617
RURAL									
Daylight	38	170	516	1105	1829	47	237	728	1012
Night	21	78	161	444	704	23	98	232	353
Sub-total	59	248	677	1549	2533	70	335	960	1365
TOTAL	96	594	5005	10469	16164	108	711	6163	6982

¹ Determined according to the schedule of sunrise and sunset times as published in the South Australian Government Gazette

Table 19: Crashes and Casualties by Vertical Alignment, Region & Severity

Vertical Alignment & Region	Crashes					Casualties			
	Fatal Crashes	Serious Injury Crashes	Minor Injury Crashes	Property Damage Crashes	ALL CRASHES	Fatalities	Serious Injuries	Minor Injuries	ALL CASUALTIES
METROPOLITAN									
Level	27	265	3778	7931	12001	27	286	4528	4841
Crest of Hill	2	8	53	103	166	2	9	60	71
Bottom of Hill	2	6	39	79	126	3	8	49	60
Slope	6	66	454	802	1328	6	72	562	640
Unknown	0	1	4	5	10	0	1	4	5
Sub-total	37	346	4328	8920	13631	38	376	5203	5617
RURAL									
Level	49	179	511	1223	1962	60	251	724	1035
Crest of Hill	2	13	28	68	111	2	15	41	58
Bottom of Hill	1	5	27	48	81	1	6	39	46
Slope	7	47	109	204	367	7	59	154	220
Unknown	0	4	2	6	12	0	4	2	6
Sub-total	59	248	677	1549	2533	70	335	960	1365
TOTAL	96	594	5005	10469	16164	108	711	6163	6982

Table 20: Crashes and Casualties by Horizontal Alignment, Region & Severity

	Crashes					Casualties			
	Fatal Crashes	Serious Injury Crashes	Minor Injury Crashes	Property Damage Crashes	ALL CRASHES	Fatalities	Serious Injuries	Minor Injuries	ALL CASUALTIES
METROPOLITAN									
Straight	31	268	3908	8092	12299	32	288	4698	5018
Curved, View Obscured	1	24	117	223	365	1	27	136	164
Curved, View Open	5	53	301	602	961	5	60	367	432
Unknown	0	1	2	3	6	0	1	2	3
Sub-total	37	346	4328	8920	13631	38	376	5203	5617
RURAL									
Straight	32	154	474	1150	1810	40	214	654	908
Curved, View Obscured	5	30	63	131	229	5	38	89	132
Curved, View Open	22	63	140	264	489	25	82	217	324
Unknown	0	1	0	4	5	0	1	0	1
Sub-total	59	248	677	1549	2533	70	335	960	1365
TOTAL	96	594	5005	10469	16164	108	711	6163	6982

Table 21: Crashes and Casualties by Road Moisture, Region & Severity

Road Moisture & Region	Crashes					Casualties			
	Fatal Crashes	Serious Injury Crashes	Minor Injury Crashes	Property Damage Crashes	ALL CRASHES	Fatalities	Serious Injuries	Minor Injuries	ALL CASUALTIES
METROPOLITAN									
Dry	32	304	3811	7750	11897	33	331	4584	4948
Wet	5	40	515	1170	1730	5	43	617	665
Unknown	0	2	2	0	4	0	2	2	4
Sub-total	37	346	4328	8920	13631	38	376	5203	5617
RURAL									
Dry	56	224	604	1330	2214	67	307	869	1243
Wet	3	23	73	219	318	3	27	91	121
Unknown	0	1	0	0	1	0	1	0	1
Sub-total	59	248	677	1549	2533	70	335	960	1365
TOTAL	96	594	5005	10469	16164	108	711	6163	6982

Table 22: Crashes and Casualties by Route and Severity

Route	Crashes					Casualties			
	Fatal Crashes	Serious Injury Crashes	Minor Injury Crashes	Property Damage Crashes	ALL CRASHES	Fatalities	Serious Injuries	Minor Injuries	ALL CASUALTIES
Anzac Highway	2	5	51	105	163	2	7	56	65
Barrier Highway	0	1	8	15	24	0	2	17	19
Cudlee Creek - Lobethal Rd	0	1	4	3	8	0	1	5	6
Dukes Highway	1	3	7	20	31	2	9	10	21
Eyre Highway	2	7	12	28	49	3	11	18	32
Gorge Rd	0	4	18	33	55	0	4	26	30
Lincoln Highway	1	2	9	18	30	2	5	15	22
Lyndoch - Chain of Ponds Rd	0	2	5	8	15	0	2	5	7
Lwr North East Road	0	3	3	7	13	0	3	3	6
Horrocks Hwy	1	3	14	26	44	1	5	24	30
Main North Road (M) ¹	1	12	229	458	700	1	14	286	301
North East Road	1	2	113	221	337	1	2	147	150
Main South Road	0	3	13	23	39	0	4	27	31
Prt Wakefield Rd/Augusta Hwy	3	8	29	58	98	5	17	47	69
Princess Highway	2	6	23	44	75	5	7	35	47
Riddoch Highway	1	4	7	18	30	1	4	10	15
SE Freeway ²	0	3	28	82	113	0	4	35	39
Southern Expressway	0	1	11	31	43	0	1	13	14
Stuart Highway	5	5	12	25	47	7	14	26	47
Sturt Highway	8	6	19	53	86	8	12	26	46
Tea Tree Gully - Mannum Rd	0	4	18	53	75	0	4	22	26
Victor Harbor Road	3	2	17	27	49	3	6	31	40

M = metropolitan Adelaide

¹ From Fitzroy Terrace to Gawler Bypass.

² Does not include the intersection with Cross Road

**Table 23a: Crashes and Casualties by Local Government Area & Severity
Metropolitan Adelaide: Local Government Roads**

Local Government Area	Crashes					Casualties			
	Fatal Crashes	Serious Injury Crashes	Minor Injury Crashes	Property Damage Crashes	ALL CRASHES	Fatalities	Serious Injuries	Minor Injuries	ALL CASUALTIES
Adelaide Hills Council	0	15	37	73	125	0	16	45	61
Barossa Council ¹	0	0	1	3	4	0	0	2	2
CC Campbelltown	0	3	27	64	94	0	3	32	35
CC Marion	0	8	53	148	209	0	8	61	69
CC Mitcham	0	5	43	109	157	0	6	51	57
CC Norwd, Pynhm & St Ptrs	0	1	26	86	113	0	1	27	28
City of Adelaide	0	13	203	469	685	0	13	226	239
City of Burnside	0	2	22	56	80	0	2	23	25
City of Charles Sturt	0	9	57	190	256	0	10	69	79
City of Holdfast Bay	0	3	39	94	136	0	3	41	44
City of Onkaparinga	3	25	147	287	462	3	28	180	211
City of Playford	3	9	116	240	368	3	9	146	158
City of Port Adelaide Enfield	2	9	70	206	287	2	9	74	85
City of Prospect	0	1	4	41	46	0	1	6	7
City of Salisbury	0	11	117	281	409	0	11	140	151
City of Tea Tree Gully	1	8	52	120	181	1	8	67	76
City of Unley	0	6	31	82	119	0	6	33	39
City of West Torrens	1	5	42	146	194	1	5	44	50
CT Gawler	0	2	11	37	50	0	2	17	19
DC Mallala ¹	0	0	4	8	12	0	0	6	6
DC Mt Barker	1	7	22	59	89	1	8	26	35
Light RC ¹	0	2	3	8	13	0	2	3	5
Walkerville Town Council	0	1	11	15	27	0	1	13	14
Total	11	145	1138	2822	4116	11	152	1332	1495

¹ Barossa Council, DC Mallala and Light RC are situated in both rural South Australia and metropolitan Adelaide. For more information please look at *Preface* and *Definitions & Explanatory Notes*

**Table 23b: Crashes and Casualties by Local Government Area & Severity
Metropolitan Adelaide: DPTI Roads**

Local Government Area	Crashes					Casualties			
	Fatal Crashes	Serious Injury Crashes	Minor Injury Crashes	Property Damage Crashes	ALL CRASHES	Fatalities	Serious Injuries	Minor Injuries	ALL CASUALTIES
Adelaide Hills Council	1	21	108	258	388	1	21	126	148
Barossa Council ¹	0	0	2	1	3	0	0	2	2
CC Campbelltown	1	10	78	171	260	1	10	103	114
CC Marion	1	17	184	397	599	1	18	224	243
CC Mitcham	2	14	205	374	595	3	17	246	266
CC Norwd, Pynhm & St Ptrs	0	6	196	395	597	0	7	230	237
City of Adelaide	0	6	72	148	226	0	6	77	83
City of Burnside	0	2	85	150	237	0	2	93	95
City of Charles Sturt	4	20	309	650	983	4	22	372	398
City of Holdfast Bay	0	5	79	128	212	0	6	95	101
City of Onkaparinga	2	12	224	393	631	2	14	278	294
City of Playford	2	6	153	281	442	2	7	191	200
City of Port Adelaide Enfield	5	14	347	680	1046	5	14	417	436
City of Prospect	0	5	114	180	299	0	6	128	134
City of Salisbury	1	29	356	612	998	1	33	444	478
City of Tea Tree Gully	0	10	135	202	347	0	10	182	192
City of Unley	1	8	113	232	354	1	10	125	136
City of West Torrens	4	6	228	461	699	4	7	259	270
CT Gawler	0	0	55	91	146	0	0	69	69
DC Mallala ¹	0	1	7	11	19	0	2	10	12
DC Mt Barker	1	4	54	132	191	1	7	76	84
Light RC ¹	1	2	15	17	35	1	2	21	24
Walkerville Town Council	0	3	71	134	208	0	3	103	106
Total	26	201	3190	6098	9515	27	224	3871	4122

¹ Barossa Council, DC Mallala and Light RC are situated in both rural South Australia and metropolitan Adelaide. For more information please look at *Preface* and *Definitions & Explanatory Notes*

**Table 23c: Crashes and Casualties by Local Government Area & Severity
Metropolitan Adelaide: All Roads**

Local Government Area	Crashes					Casualties			
	Fatal Crashes	Serious Injury Crashes	Minor Injury Crashes	Property Damage Crashes	ALL CRASHES	Fatalities	Serious Injuries	Minor Injuries	ALL CASUALTIES
Adelaide Hills Council	1	36	145	331	513	1	37	171	209
Barossa Council ¹	0	0	3	4	7	0	0	4	4
CC Campbelltown	1	13	105	235	354	1	13	135	149
CC Marion	1	25	237	545	808	1	26	285	312
CC Mitcham	2	19	248	483	752	3	23	297	323
CC Norwd, Pynhm & St Ptrs	0	7	222	481	710	0	8	257	265
City of Adelaide	0	19	275	617	911	0	19	303	322
City of Burnside	0	4	107	206	317	0	4	116	120
City of Charles Sturt	4	29	366	840	1239	4	32	441	477
City of Holdfast Bay	0	8	118	222	348	0	9	136	145
City of Onkaparinga	5	37	371	680	1093	5	42	458	505
City of Playford	5	15	269	521	810	5	16	337	358
City of Port Adelaide Enfield	7	23	417	886	1333	7	23	491	521
City of Prospect	0	6	118	221	345	0	7	134	141
City of Salisbury	1	40	473	893	1407	1	44	584	629
City of Tea Tree Gully	1	18	187	322	528	1	18	249	268
City of Unley	1	14	144	314	473	1	16	158	175
City of West Torrens	5	11	270	607	893	5	12	303	320
CT Gawler	0	2	66	128	196	0	2	86	88
DC Mallala ¹	0	1	11	19	31	0	2	16	18
DC Mt Barker	2	11	76	191	280	2	15	102	119
Light RC ¹	1	4	18	25	48	1	4	24	29
Walkerville Town Council	0	4	82	149	235	0	4	116	120
Total	37	346	4328	8920	13631	38	376	5203	5617

¹ Barossa Council, DC Mallala and Light RC are situated in both rural South Australia and metropolitan Adelaide. For more information please look at *Preface* and *Definitions & Explanatory Notes*

**Table 24a: Crashes and Casualties by Local Government Area & Severity
Rural: Local Government Roads**

Local Government Area	Crashes				ALL CRASHES	Casualties			
	Fatal Crashes	Serious Injury Crashes	Minor Injury Crashes	Property Damage Crashes		Fatalities	Serious Injuries	Minor Injuries	ALL CASUALTIES
Alexandrina Council	2	3	23	50	78	2	4	27	33
Barossa Council ¹	2	7	10	38	57	2	7	13	22
Barunga West DC	0	1	1	1	3	0	1	1	2
Berri Barmera Council	0	0	3	27	30	0	0	5	5
CC Mt Gambier	0	1	12	62	75	0	1	13	14
CC Port Augusta	0	1	6	34	41	0	1	6	7
CC Port Lincoln	0	1	9	27	37	0	1	11	12
CC Whyalla	0	2	15	42	59	0	3	19	22
Clare & Gilbert Valleys DC	0	1	2	16	19	0	1	3	4
Coorong DC	0	4	12	5	21	0	5	13	18
Copper Coast DC	0	3	14	29	46	0	4	23	27
DC Ceduna	0	0	1	6	7	0	0	1	1
DC Cleve	0	1	1	3	5	0	1	1	2
DC Coober Pedy	0	0	2	2	4	0	0	3	3
DC Elliston	0	0	1	1	2	0	0	1	1
DC Franklin Harbor	0	0	0	1	1	0	0	0	0
DC Grant	0	1	6	22	29	0	1	7	8
DC Karoonda East Murray	1	1	2	6	10	1	1	3	5
DC Kimba	0	0	0	1	1	0	0	0	0
DC Kingston	0	1	3	0	4	0	1	3	4
DC Lower Eyre Peninsula	1	2	2	11	16	1	2	2	5
DC Mallala ¹	1	3	8	10	22	1	6	10	17
DC Mt Remarkable	0	1	1	5	7	0	1	1	2
DC Orroroo/Carrieton	0	0	0	1	1	0	0	0	0
DC Peterborough	0	1	1	1	3	0	1	4	5
Subtotal	7	35	135	401	578	7	42	170	219

¹ Barossa Council and DC Mallala are situated in both rural South Australia and metropolitan Adelaide. For more information please look at *Preface* and *Definitions & Explanatory Notes*

Table 24a: Crashes and Casualties by Local Government Area & Severity
Rural: Local Government Roads (cont...)

Local Government Area	Crashes				ALL CRASHES	Casualties			
	Fatal Crashes	Serious Injury Crashes	Minor Injury Crashes	Property Damage Crashes		Fatalities	Serious Injuries	Minor Injuries	ALL CASUALTIES
DC Renmark Paringa	0	6	7	10	23	0	10	10	20
DC Robe	0	1	0	2	3	0	1	0	1
DC Streaky Bay	0	0	2	4	6	0	0	4	4
DC Tatiara	0	6	1	12	19	0	8	4	12
DC Tumby Bay	0	0	1	5	6	0	0	1	1
DC Victor Harbor	0	2	12	15	29	0	2	13	15
DC Wudinna	0	0	1	1	2	0	0	1	1
DC Yankallila	0	3	6	22	31	0	3	7	10
DC Yorke Peninsula	0	7	10	21	38	0	7	19	26
Flinders Rangers Council	0	0	0	2	2	0	0	0	0
Kangaroo Island Council	1	4	5	27	37	1	7	5	13
Light RC ¹	0	4	3	12	19	0	4	6	10
Loxton Waikarie DC	0	3	7	16	26	0	4	7	11
MC Roxby Downs	0	0	0	4	4	0	0	0	0
Mid Murray DC	1	6	9	17	33	1	7	10	18
Naracoorte Lucindale Council	0	5	6	13	24	0	5	8	13
Northern Areas Council	2	0	3	1	6	2	0	3	5
Port Pirie City DC	2	3	20	35	60	2	3	26	31
RC Goyder	1	2	3	5	11	1	2	4	7
RC Murray Bridge	1	5	18	39	63	1	7	23	31
Southern Mallee DC	0	0	1	8	9	0	0	1	1
Unincorporated (Eastern)	0	0	0	1	1	0	0	0	0
Unincorporated (N & W)	3	4	5	7	19	3	8	20	31
Wakefield RC	1	5	5	4	15	1	6	8	15
Wattle Range Council	1	10	13	15	39	2	14	15	31
Subtotal	13	76	138	298	525	14	98	195	307
Total	20	111	273	699	1103	21	140	365	526

¹ Light RC is situated in both rural South Australia and metropolitan Adelaide. For more information please look at *Preface* and *Definitions & Explanatory Notes*

**Table 24b: Crashes and Casualties by Local Government Area & Severity
Rural: DPTI Roads**

Local Government Area	Crashes					Casualties			
	Fatal Crashes	Serious Injury Crashes	Minor Injury Crashes	Property Damage Crashes	ALL CRASHES	Fatalities	Serious Injuries	Minor Injuries	ALL CASUALTIES
Alexandrina Council	3	6	37	67	113	3	7	50	60
Barossa Council ¹	1	9	30	42	82	1	10	44	55
Barunga West DC	0	2	3	16	21	0	2	6	8
Berri Barmera Council	1	2	10	25	38	1	2	13	16
CC Mt Gambier	0	6	16	45	67	0	6	20	26
CC Port Augusta	0	0	10	39	49	0	0	12	12
CC Port Lincoln	0	2	14	31	47	0	2	18	20
CC Whyalla	1	2	5	12	20	2	5	8	15
Clare & Gilbert Valleys DC	1	0	13	23	37	1	2	17	20
Coorong DC	1	6	10	24	41	2	14	14	30
Copper Coast DC	0	1	9	9	19	0	1	14	15
DC Ceduna	0	3	1	10	14	0	3	3	6
DC Cleve	0	1	2	5	8	0	1	6	7
DC Coober Pedy	0	0	0	2	2	0	0	0	0
DC Elliston	0	5	1	9	15	0	6	1	7
DC Franklin Harbor	0	0	2	4	6	0	0	3	3
DC Grant	0	3	6	15	24	0	5	6	11
DC Karoonda East Murray	0	1	3	4	8	0	1	4	5
DC Kimba	0	0	4	0	4	0	0	6	6
DC Kingston	1	0	3	8	12	1	0	4	5
DC Lower Eyre Peninsula	0	0	7	12	19	0	0	7	7
DC Mallala ¹	1	1	5	12	19	2	5	12	19
DC Mt Remarkable	1	3	5	14	23	2	4	12	18
DC Orroroo/Carrieton	0	1	1	2	4	0	1	1	2
DC Peterborough	0	0	3	4	7	0	0	7	7
Subtotal	11	54	200	434	699	15	77	288	380

¹ Barossa Council and DC Mallala are situated in both rural South Australia and metropolitan Adelaide. For more information please look at *Preface* and *Definitions & Explanatory Notes*

**Table 24b: Crashes and Casualties by Local Government Area & Severity
Rural: DPTI Roads (cont...)**

Local Government Area	Crashes					Casualties			
	Fatal Crashes	Serious Injury Crashes	Minor Injury Crashes	Property Damage Crashes	ALL CRASHES	Fatalities	Serious Injuries	Minor Injuries	ALL CASUALTIES
DC Renmark Paringa	2	0	4	21	27	2	0	6	8
DC Robe	1	1	4	4	10	1	1	12	14
DC Streaky Bay	0	1	1	7	9	0	1	1	2
DC Tatiara	0	2	9	9	20	0	2	9	11
DC Tumby Bay	0	0	3	4	7	0	0	6	6
DC Victor Harbor	1	1	13	21	36	1	4	19	24
DC Wudinna	0	0	2	5	7	0	0	2	2
DC Yankallila	0	5	11	23	39	0	5	21	26
DC Yorke Peninsula	2	2	6	27	37	2	5	13	20
Flinders Rangers Council	0	1	3	2	6	0	1	4	5
Kangaroo Island Council	0	2	4	7	13	0	2	4	6
Light RC ¹	3	7	15	24	49	3	10	23	36
Loxton Waikarie DC	1	9	11	37	58	1	10	12	23
MC Roxby Downs	0	0	0	0	0	0	0	0	0
Mid Murray DC	1	7	16	25	49	1	9	23	33
Naracoorte Lucindale Council	3	2	8	11	24	3	3	10	16
Northern Areas Council	0	4	7	7	18	0	4	12	16
Port Pirie City DC	1	0	4	12	17	1	0	6	7
RC Goyder	0	1	6	8	15	0	2	11	13
RC Murray Bridge	1	11	21	47	80	1	13	26	40
Southern Mallee DC	0	1	1	5	7	0	1	1	2
Unincorporated (Eastern)	0	3	0	0	0	0	0	0	0
Unincorporated (N & W)	9	18	30	59	116	12	32	49	93
Wakefield RC	0	5	14	29	48	0	8	18	26
Wattle Range Council	3	3	11	23	40	6	5	19	30
Subtotal	28	86	204	417	732	34	118	307	459
Total	39	140	404	851	1431	49	195	595	839

¹ Light RC is situated in both rural South Australia and metropolitan Adelaide. For more information please look at *Preface* and *Definitions & Explanatory Notes*

**Table 24c: Crashes and Casualties by Local Government Area & Severity
Rural: All Roads**

Local Government Area	Crashes					Casualties			
	Fatal Crashes	Serious Injury Crashes	Minor Injury Crashes	Property Damage Crashes	ALL CRASHES	Fatalities	Serious Injuries	Minor Injuries	ALL CASUALTIES
Alexandrina Council	5	9	60	117	191	5	11	77	93
Barossa Council ¹	3	16	40	80	139	3	17	57	77
Barunga West DC	0	3	4	17	24	0	3	7	10
Berri Barmera Council	1	2	13	52	68	1	2	18	21
CC Mt Gambier	0	7	28	107	142	0	7	33	40
CC Port Augusta	0	1	16	73	90	0	1	18	19
CC Port Lincoln	0	3	23	58	84	0	3	29	32
CC Whyalla	1	4	20	54	79	2	8	27	37
Clare & Gilbert Valleys DC	1	1	15	39	56	1	3	20	24
Coorong DC	1	10	22	29	62	2	19	27	48
Copper Coast DC	0	4	23	38	65	0	5	37	42
DC Ceduna	0	3	2	16	21	0	3	4	7
DC Cleve	0	2	3	8	13	0	2	7	9
DC Coober Pedy	0	0	2	4	6	0	0	3	3
DC Elliston	0	5	2	10	17	0	6	2	8
DC Franklin Harbor	0	0	2	5	7	0	0	3	3
DC Grant	0	4	12	37	53	0	6	13	19
DC Karoonda East Murray	1	2	5	10	18	1	2	7	10
DC Kimba	0	0	4	1	5	0	0	6	6
DC Kingston	1	1	6	8	16	1	1	7	9
DC Lower Eyre Peninsula	1	2	9	23	35	1	2	9	12
DC Mallala ¹	2	4	13	22	41	3	11	22	36
DC Mt Remarkable	1	4	6	19	30	2	5	13	20
DC Orroroo/Carrieton	0	1	1	3	4	0	1	1	2
DC Peterborough	0	1	4	5	10	0	1	11	12
Subtotal	18	89	335	835	1276	22	119	458	599

¹ Barossa Council and DC Mallala are situated in both rural South Australia and metropolitan Adelaide. For more information please look at *Preface* and *Definitions & Explanatory Notes*

**Table 24c: Crashes and Casualties by Local Government Area & Severity
Rural: All Roads (cont...)**

Local Government Area	Crashes					Casualties			
	Fatal Crashes	Serious Injury Crashes	Minor Injury Crashes	Property Damage Crashes	ALL CRASHES	Fatalities	Serious Injuries	Minor Injuries	ALL CASUALTIES
DC Renmark Paringa	2	6	11	31	50	2	10	16	28
DC Robe	1	2	4	6	13	1	2	12	15
DC Streaky Bay	0	1	3	11	15	0	1	5	6
DC Tatiara	0	8	10	21	39	0	10	13	23
DC Tumby Bay	0	0	4	9	13	0	0	7	7
DC Victor Harbor	1	3	25	36	65	1	6	32	39
DC Wudinna	0	0	3	6	9	0	0	3	3
DC Yankallila	0	8	17	45	70	0	8	28	36
DC Yorke Peninsula	2	9	16	48	75	2	12	32	46
Flinders Rangers Council	0	1	3	4	8	0	1	4	5
Kangaroo Island Council	1	6	9	34	50	1	9	9	19
Light RC ¹	3	11	18	36	68	3	14	29	46
Loxton Waikarie DC	1	12	18	53	84	1	14	19	34
MC Roxby Downs	0	0	0	4	4	0	0	0	0
Mid Murray DC	2	13	25	42	82	2	16	33	51
Naracoorte Lucindale Council	3	7	14	24	48	3	8	18	29
Northern Areas Council	2	4	10	8	24	2	4	15	21
Port Pirie City DC	3	3	24	47	77	3	3	32	38
RC Goyder	1	3	9	13	26	1	4	15	20
RC Murray Bridge	2	16	39	86	143	2	20	49	71
Southern Mallee DC	0	1	2	13	16	0	1	2	3
Unincorporated (Eastern)	0	3	0	1	1	0	0	0	0
Unincorporated (N & W)	12	22	35	66	135	15	40	69	124
Wakefield RC	1	10	19	33	63	1	14	26	41
Wattle Range Council	4	13	24	38	79	8	19	34	61
Subtotal	41	162	342	715	1257	48	216	502	766
Total	59	251	677	1550	2533	70	335	960	1365

¹ Light RC is situated in both rural South Australia and metropolitan Adelaide. For more information please look at *Preface* and *Definitions & Explanatory Notes*

**Table 25a: Top 10 Intersections with the highest number of crashes
Casualty Crashes, 2010 - 2014**

Intersection	Current Year	Previous Years			
	2014	2013	2012	2011	2010
Regency Road - Main North Road	14	7	9	11	8
Cross Road - Glen Osmond Road	13	1	1	4	9
Sudholz Road - North East Road	11	3	2	13	13
Fullarton Road - Dequetteville Terrace	10	6	10	8	8
Hampstead Road - Grand Junction Road	10	7	8	7	5
Main North Road – Grand Junction Road	10	18	9	12	11
South Road - Manton Street	10	9	7	9	9
South Road – Torrens Road	10	13	13	10	11
Bolivar Road - Port Wakefield Road	9	7	4	4	3
Salisbury Highway - Kings Road	9	5	5	9	8
Main South Road - Brookside Road	9	0	1	1	0

**Table 25b: Top 10 Intersections with the highest number of crashes
All Crash Severities, 2010 - 2014**

Intersection	Current Year	Previous Years			
	2014	2013	2012	2011	2010
Fullarton Road - Dequetteville Terrace	42	43	76	69	55
South Road – Manton Street	36	22	35	29	30
Main North Road – Grand Junction Road	33	38	45	53	45
Cross Road - Glen Osmond Road	28	8	20	24	26
Regency Road – Main North Road	28	24	44	38	31
South Road – Torrens Road	24	26	29	33	36
Ascot Avenue - North East Road	23	10	15	18	11
Salisbury Highway - Kings Road	22	14	20	30	24
South Road – Port Road	22	20	42	36	31
Hampstead Road - Grand Junction Road	21	17	29	35	21

Table 26: Motor Vehicles Involved in & Responsible for Crashes by Region and Severity

Vehicle Type & Region	Fatal Crashes		Serious Injury Crashes		Minor Injury Crashes		Property Damage Crashes		ALL CRASHES	
	Involved	Responsible	Involved	Responsible	Involved	Responsible	Involved	Responsible	Involved	Responsible
PASSENGER VEHICLES										
Metropolitan Adelaide	35	16	410	225	7486	3667	16142	8073	24073	11981
Rural	68	50	231	173	832	550	2100	1263	3231	2036
Subtotal	103	66	641	398	8318	4217	18242	9336	27304	14017
LIGHT TRUCKS(>4.5 Tonnes)										
Metropolitan Adelaide	0	0	0	0	25	14	63	35	88	49
Rural	0	0	3	1	1	1	5	2	9	4
Subtotal	0	0	3	1	26	15	68	37	97	53
HEAVY VEHICLE¹										
Metropolitan Adelaide	6	3	10	4	153	105	498	301	667	413
Rural	14	2	20	8	36	21	113	69	183	100
Subtotal	20	5	30	12	189	126	611	370	850	513
BUSES										
Metropolitan Adelaide	1	0	3	0	51	21	120	63	175	84
Rural	0	0	0	0	3	2	10	6	13	8
Subtotal	1	0	3	0	54	23	130	69	188	92
MOTORCYCLES										
Metropolitan Adelaide	7	5	68	44	367	202	411	200	853	451
Rural	4	3	66	51	64	50	45	22	179	126
Subtotal	11	8	134	95	431	252	456	222	1032	577
BICYCLES										
Metropolitan Adelaide	3	2	65	32	475	150	365	78	908	262
Rural	1	0	5	3	38	17	23	5	67	25
Subtotal	4	2	70	35	513	167	388	83	975	287
OTHERS VEHICLE TYPES										
Metropolitan Adelaide	0	0	3	0	18	8	63	29	84	37
Rural	3	2	4	2	3	2	16	7	26	13
Subtotal	3	2	7	2	21	10	79	36	110	50
ALL VEHICLE TYPES										
Metropolitan Adelaide	52	26	559	305	8575	4167	17662	8779	26848	13277
Rural	90	57	329	238	977	643	2312	1374	3708	2312
TOTAL	142	83	888	543	9552	4810	19974	10153	30556	15589

¹ Excludes Buses

NOTE: Excludes data for crashes where responsibility not attributed to a road user. For example, responsibility not recorded or unriden animal responsible

Table 27: Crashes and Casualties by Vehicle Movement of Motor Vehicle Responsible and Severity (excl Pedestrian)

Vehicle Movement of Responsible Unit	Crashes					Casualties			
	Fatal Crashes	Serious Injury Crashes	Minor Injury Crashes	Property Damage Crashes	ALL CRASHES	Fatalities	Serious Injuries	Minor Injuries	ALL CASUALTIES
Right Turn	7	81	886	1713	2687	10	93	1165	1268
Left Turn	2	21	341	667	1031	3	24	383	410
U Turn	0	9	90	227	326	0	9	108	117
Swerving	4	19	209	697	929	4	19	233	256
Reversing	0	1	23	138	162	0	1	24	25
Stopped on Carriageway	0	1	9	7	17	0	1	9	10
Straight Ahead	62	382	2940	5692	9076	68	473	3673	4214
Entering Private Driveway	0	6	54	116	176	0	6	62	68
Leaving Private Driveway	4	9	146	456	615	5	11	172	188
Parked	0	1	28	37	66	0	1	28	29
Parking - Angle	0	0	2	12	14	0	0	2	2
Parking - Parallel	0	2	10	25	37	0	2	10	12
Unparking -Angle	0	2	5	37	44	0	2	6	8
UnParking - Parallel	0	2	23	140	165	0	3	24	27
Overtaking - on Right	4	7	38	124	173	5	15	48	68
Overtaking - on Left	0	0	5	65	70	0	0	6	6
Other	0	0	1	0	1	0	0	1	1
TOTAL	83	543	4810	10153	15589	95	660	5954	6709

NOTE: Excludes data for crashes where responsibility not attributed to a road user. For example, responsibility not recorded or unriden animal responsible

Table 28: Crashes and Casualties by Pedestrian Responsible Movement and Severity

Pedestrian Movement	Crashes					Casualties			
	Fatal Crashes	Serious Injury Crashes	Minor Injury Crashes	Property Damage Crashes	ALL CRASHES	Fatalities	Serious Injuries	Minor Injuries	ALL CASUALTIES
Walking on Footpath	0	1	1	0	2	0	1	1	2
On Pedestrian Crossing	0	0	1	0	1	0	0	1	1
Within 30m of Pedestrian Crossing	0	1	2	0	3	0	1	2	3
Alighted from Parked Vehicle	0	0	2	0	2	0	0	2	2
Walked from between Parked Vehicles	0	1	3	0	4	0	1	4	5
Walking on Road	3	3	11	1	18	3	3	12	18
Walking on Road – Against Traffic	0	0	2	0	2	0	0	2	2
Pushing or Working on Vehicle	0	0	1	0	1	0	0	1	1
Playing on Roadway	1	0	1	0	2	1	0	1	2
Crossing without Control	7	34	60	7	108	7	34	64	105
Other	1	2	1	0	4	1	2	1	4
Crossing with Traffic Signals	0	0	15	2	17	0	0	15	15
TOTAL	12	42	100	10	164	12	42	106	160

Table 29: Crashes by Motor Vehicle Type Involved¹ and Severity

Type of Vehicle ¹	Fatal Crashes	Serious Injury Crashes	Minor Injury Crashes	Property Damage Crashes	ALL CRASHES
Passenger Vehicle	84	468	4607	10179	15338
Light Truck (>4.5 Tonnes)	0	2	26	67	95
Heavy Vehicle	22	35	199	661	917
Buses	1	3	54	127	185
Motorcycles	11	130	427	450	1018
Bicycles	4	66	493	382	945
Other	0	0	0	7	7

Table 30: Crashes and Casualties by Speed Involvement² and Severity

Speed Involvement ² & Region	Crashes					Casualties			
	Fatal Crashes	Serious Injury Crashes	Minor Injury Crashes	Property Damage Crashes	ALL CRASHES	Fatalities	Serious Injuries	Minor Injuries	ALL CASUALTIES
METROPOLITAN									
Yes	10	40	103	260	413	10	49	136	195
No	27	306	4225	8660	13218	28	327	5067	5422
Sub-total	37	346	4328	8920	13631	38	376	5203	5617
RURAL									
Yes	20	40	61	90	211	21	53	98	172
No	39	208	616	1459	2322	49	282	862	1193
Sub-total	59	248	677	1549	2533	70	335	960	1365
TOTAL	96	594	5005	10469	16164	108	711	6163	6982

¹ The vehicle type categories are not mutually exclusive and must not be added together. It is where the crash has involved at least one of the vehicle types. Where one crash has involved two or more of the same vehicle type, then it has been counted once.

² Speed contribution definition is located under *Definitions & Explanations*

ROAD CASUALTIES in 2014

Road Users
Seatbelts & Helmets
Age & Sex Distribution
Alcohol
Drug
Licence
Involvement & Responsibility

Table 31: Casualties by Road User Type, Severity, Age and Sex

Road User Types	Sex	0-15			16-19			20-24			25-29			30-39			40-49			50-59 ¹			60-69			70+			Unknown			ALL CASUALTIES		
		F	SI	MI	F	SI	MI	F	SI	MI	F	SI	MI	F	SI	MI	F	SI	MI	F	SI	MI	F	SI	MI	F	SI	MI	F	SI	MI			
VEHICLE OCCUPANT																																		
Driver ¹	M	0	0	2	2	20	117	6	33	178	3	24	170	6	37	292	8	27	303	2	25	225	2	13	146	10	19	159	0	2	3	39	200	1595
	F	0	0	0	1	18	175	1	17	326	2	11	286	1	17	388	2	22	394	2	14	295	3	10	189	1	11	127	0	0	3	13	120	2183
	Subtotal²	0	0	2	3	38	292	7	50	504	5	35	456	7	54	680	10	49	697	4	39	520	5	23	335	11	30	286	0	2	7	52	320	3779
Passenger	M	4	5	118	1	12	62	2	5	41	1	7	34	1	5	38	2	5	28	0	3	13	0	1	15	1	2	18	0	8	49	12	53	416
	F	2	8	154	1	15	75	1	12	79	2	8	49	0	5	78	2	9	57	0	5	62	2	5	59	2	9	65	0	6	131	12	82	809
	Subtotal²	6	13	272	2	27	137	3	17	120	3	15	83	1	10	116	4	14	85	0	8	75	2	6	74	3	11	83	0	14	180	24	135	1225
MOTORCYCLIST																																		
Rider	M	0	1	5	1	9	46	0	12	65	1	15	34	1	13	63	4	31	60	1	23	71	2	9	30	0	2	6	0	1	0	10	116	380
	F	0	0	0	0	2	0	0	2	5	0	1	5	1	2	9	0	3	6	0	1	9	0	0	0	0	0	3	0	0	0	1	11	37
	Subtotal²	0	1	5	1	11	46	0	14	70	1	16	39	2	15	72	4	34	66	1	24	80	2	9	30	0	2	9	0	1	0	11	127	417
Pillion Passenger	M	0	1	3	0	0	1	0	0	0	0	0	0	0	0	0	0	0	2	0	0	0	0	0	1	0	0	0	0	0	0	1	7	
	F	0	0	1	0	0	0	0	0	2	0	0	2	0	0	0	0	1	2	0	0	2	0	0	1	0	1	0	0	0	3	0	2	13
	Subtotal²	0	1	4	0	0	1	0	0	2	0	0	2	0	0	0	0	1	4	0	0	2	0	0	2	0	1	0	0	0	3	0	3	20
PEDESTRIAN																																		
M	M	1	7	16	0	3	9	1	4	9	0	1	8	2	4	14	1	8	14	1	5	9	2	6	15	4	6	17	0	1	6	12	45	117
	F	0	1	12	0	0	6	0	2	8	0	1	14	0	3	14	0	4	9	0	0	9	1	2	14	4	4	17	0	0	7	5	17	110
	Subtotal²	1	8	28	0	3	15	1	6	17	0	2	22	2	7	28	1	12	23	1	5	18	3	8	29	8	10	34	0	1	13	17	62	227
BICYCLIST																																		
M	M	0	3	21	0	1	20	0	3	42	0	2	39	1	11	83	1	10	76	0	15	66	1	8	33	0	3	11	0	1	16	3	57	407
	F	0	0	5	0	0	6	0	0	9	0	1	11	0	2	19	1	2	14	0	2	12	0	0	7	0	0	0	0	0	3	1	7	86
	Subtotal²	0	3	26	0	1	26	0	3	51	0	3	50	1	13	102	2	12	91	0	17	78	1	8	40	0	3	11	0	1	20	4	64	495
OTHER ROAD USER																																		
M	M	0	0	0	0	0	0	0	0	0	0	0	0	0	0	0	0	0	0	0	0	0	0	0	0	0	0	0	0	0	0	0	0	0
	F	0	0	0	0	0	0	0	0	0	0	0	0	0	0	0	0	0	0	0	0	0	0	0	0	0	0	0	0	0	0	0	0	0
	Subtotal²	0	0	0	0	0	0	0	0	0	0	0	0	0	0	0	0	0	0	0	0	0	0	0	0	0	0	0	0	0	0	0	0	0
ALL ROAD USERS																																		
M	M	5	17	165	4	45	255	9	57	335	5	49	285	11	70	490	16	81	483	4	71	384	7	37	240	15	32	211	0	13	74	76	472	2922
	F	2	9	172	2	35	262	2	33	429	4	22	367	2	29	508	5	41	482	2	22	389	6	17	270	7	25	212	0	6	147	32	239	3238
	TOTAL²	7	26	337	6	80	517	11	90	764	9	71	652	13	99	998	21	122	966	6	93	773	13	54	510	22	57	423	0	19	223	108	711	6163

¹ Includes a male 50-59 minor injury that was a 'rider' of a heavy vehicle

² Unknown sex included

Table 32: Casualties by Unit Type and Severity

Unit Type	Fatalities	Serious Injuries	Minor Injuries	ALL CASUALTIES
Passenger Vehicle	73	443	4920	5436
Light Truck (<4.5Tonnes)	0	1	6	7
Heavy Vehicle ¹	3	11	54	68
Bus	0	0	24	24
Motorcycle	11	130	437	578
Bicycle	4	64	495	563
Pedestrian	17	62	227	306
Other	0	0	0	0
TOTAL	108	711	6163	6982

Table 33: Motor Vehicle Casualties by Position in Vehicle and Severity (excl. Motorcycles & Bicycles)

Position in Vehicle	Fatalities	Serious Injuries	Minor Injuries	ALL CASUALTIES
FRONT SEAT PASSENGER				
Driver ²	52	320	3778	4150
Middle	0	1	1	2
Left	10	85	812	907
REAR SEAT PASSENGER				
Right	6	15	133	154
Middle	1	7	40	48
Left	4	18	140	162
CHILD NURSED				
Front	0	0	1	1
Rear	0	0	0	0
UTILITY/TRUCK				
Rear	0	1	1	2
VAN				
Passenger	0	1	1	2
BUS				
Passenger	0	0	17	17
MOTORCYCLE				
Rider	11	127	417	555
Passenger	0	3	20	23
TOWED VEHICLE				
Occupant	0	0	1	1
UNKNOWN/OTHER				
	3	7	80	90
Subtotal	87	585	5442	6114
TOTAL³	108	711	6163	6982

¹ Excludes Buses

² Includes drivers of all vehicles – passenger, heavy truck, light truck & other; excludes one minor injury that was a 'rider' of a heavy vehicle

³ Includes not applicable vehicle occupant user types

Table 34: Casualties by Road User Type, Safety Device and Severity

Casualty Type & Safety Device Use ¹	Fatalities	Serious Injuries	Minor Injuries	ALL CASUALTIES
DRIVER²				
Fitted – Worn	38	221	3316	3575
Fitted – Not Worn	9	14	41	64
Fitted – Unknown if Worn	5	81	418	504
Not Fitted	0	4	3	7
Unknown	0	0	0	0
Subtotal	52	320	3778	4150
PASSENGER				
Fitted – Worn	10	87	997	1094
Fitted – Not Worn	8	16	15	39
Fitted – Unknown if Worn	4	26	130	160
Child Restraint – Worn	2	2	55	59
Child Restraint– Not Worn	0	0	4	4
Not Fitted	0	4	20	24
Not Applicable	0	0	4	4
Unknown	0	0	0	0
Subtotal	24	135	1225	1384
MOTORCYCLE RIDER/PASSENGER				
Helmet Worn	11	117	417	545
Helmet – Not Worn	0	6	6	12
Unknown	0	7	14	21
Subtotal	11	130	437	578
BICYCLIST RIDER/PASSENGER				
Helmet Worn	4	59	470	533
Helmet – Not Worn	0	2	11	13
Unknown	0	3	14	17
Subtotal	4	64	495	563
ALL CASUALTIES				
Device Worn	65	486	5255	5806
Device Not Worn	17	46	100	163
Unknown/Not Applicable	9	117	580	706
Subtotal	91	649	5935	6675
TOTAL³	97	790	6290	7177

¹ Police reporting of safety device usage is often not based on direct observation by police officers and may be reliant upon statements by the casualties themselves or other involved parties.

² Excludes one minor injury that was a 'rider' of a *heavy vehicle*

³ Includes not applicable safety device use/users

Table 35: Driver and Motorcycle Rider Casualties by Sex and BAC

Severity	Sex	Blood Alcohol Concentration						Not Tested/ Unknown	TOTAL
		Negative	0.001- 0.049	0.050- 0.079	0.080- 0.149	0.150- 0.199	.200+		
Minor Injury	M	835	10	13	21	23	13	1060	1975
	F	853	3	4	13	7	7	1333	2220
	Subtotal¹	1688	13	17	34	30	20	2394	4196
Serious Injury	M	166	6	3	14	12	6	109	316
	F	79	1	0	1	4	1	45	131
	Subtotal¹	245	7	3	15	16	7	154	447
Fatalities	M	34	1	0	4	5	3	2	49
	F	11	1	0	1	0	0	1	14
	Subtotal¹	45	2	0	5	5	3	3	63
ALL CASUALTIES	M	1035	17	16	39	40	22	1171	2340
	F	943	5	4	15	11	8	1379	2365
	TOTAL¹	1978	22	20	54	51	30	2551	4706

Table 36: Driver and Motorcycle Rider Casualties by Sex and Drug

Age	Sex	Drugs					Combination of drugs ²	Not Tested/ Unknown	TOTAL
		Negative	THC	MDMA	Meth				
Minor Injury	M	726	47	0	37	8	1157	1975	
	F	724	18	1	13	7	1457	2220	
	Subtotal³	1450	65	1	50	15	2615	4196	
Serious Injury	M	145	18	2	8	7	136	316	
	F	69	2	0	2	1	57	131	
	Subtotal³	214	20	2	10	8	193	447	
Fatalities	M	33	9	0	2	3	2	49	
	F	12	0	0	1	0	1	14	
	Subtotal³	45	9	0	3	3	3	63	
ALL CASUALTIES	M	904	74	2	47	18	1295	2340	
	F	805	20	1	16	8	1515	2365	
	TOTAL³	1709	94	3	63	26	2811	4706	

¹ Unknown sex included

² Two or more of THC, MDMA or Meth

³ Unknown sex included

Table 37a: Road User Involved In & Responsible For Crashes by Age & Sex
Fatal Crash

Age	Sex	Drivers		Motorcycle Riders		Bicycle Riders		Pedestrians		Other Road Users		ALL ROAD USERS	
		Involved	Responsible	Involved	Responsible	Involved	Responsible	Involved	Responsible	Involved	Responsible	Involved	Responsible
0-15	M	0	0	0	0	0	0	1	1	0	1	1	2
	F	0	0	0	0	0	0	0	0	0	0	0	0
	Subtotal¹	0	0	0	0	0	0	1	1	0	1	1	2
16-19	M	3	3	1	0	0	0	0	0	0	0	4	3
	F	2	2	0	0	0	0	0	0	0	0	2	2
	Subtotal¹	5	5	1	0	0	0	0	0	0	0	6	5
20-24	M	12	7	0	0	0	0	1	1	0	0	13	8
	F	3	2	0	0	0	0	2	0	0	0	5	2
	Subtotal¹	15	9	0	0	0	0	3	1	0	0	18	10
25-29	M	11	8	1	1	0	0	1	0	0	0	13	9
	F	3	3	0	0	0	0	1	0	0	0	4	3
	Subtotal¹	14	11	1	1	0	0	2	0	0	0	17	12
30-39	M	16	9	1	1	1	0	3	2	0	0	21	12
	F	6	4	1	1	0	0	0	0	0	0	7	5
	Subtotal¹	22	13	2	2	1	0	3	2	0	0	28	17
40-49	M	17	9	4	2	1	1	1	1	0	0	23	13
	F	3	1	0	0	1	0	0	0	0	0	4	1
	Subtotal¹	20	10	4	2	2	1	1	1	0	0	27	14
50-59	M	13	3	1	1	0	0	1	1	0	0	15	5
	F	6	2	0	0	0	0	0	0	0	0	6	2
	Subtotal¹	19	5	1	1	0	0	1	1	0	0	21	7
60-69	M	8	4	2	2	1	1	3	0	0	0	14	7
	F	4	3	0	0	0	0	1	1	0	0	5	4
	Subtotal¹	12	7	2	2	1	1	4	1	0	0	19	11
70+	M	14	10	0	0	0	0	4	3	0	0	18	13
	F	1	1	0	0	0	0	4	2	0	0	5	3
	Subtotal¹	15	11	0	0	0	0	8	5	0	0	23	16
Unknown	M	0	0	0	0	0	0	0	0	0	0	0	0
	F	0	0	0	0	0	0	0	0	0	0	0	0
	Subtotal¹	1	0	0	0	0	0	0	0	0	0	1	0
ALL AGES	M	94	53	10	7	3	2	15	9	0	1	122	72
	F	28	18	1	1	1	0	8	3	0	0	38	22
	TOTAL¹	123	71	11	8	4	2	23	12	0	1	161	94

¹ Unknown sex included

**Table 37b: Road User Involved In & Responsible For Crashes by Age & Sex
Serious Injury Crash**

Age	Sex	Drivers		Motorcycle Riders		Bicycle Riders		Pedestrians		Other Road Users		ALL ROAD USERS	
		Involved	Responsible	Involved	Responsible	Involved	Responsible	Involved	Responsible	Involved	Responsible	Involved	Responsible
0-15	M	0	0	1	1	3	3	7	6	0	2	11	12
	F	0	0	0	0	0	0	1	0	0	0	1	0
	Subtotal¹	0	0	1	1	3	3	8	6	0	2	12	12
16-19	M	34	26	9	9	1	1	3	3	0	1	47	40
	F	32	23	2	2	0	0	0	0	0	0	34	25
	Subtotal¹	66	49	11	11	1	1	3	3	0	1	81	65
20-24	M	62	51	12	8	4	1	4	4	0	0	82	64
	F	29	21	2	2	0	0	2	2	0	0	33	25
	Subtotal¹	91	72	14	10	4	1	6	6	0	0	115	89
25-29	M	48	31	16	9	2	1	1	0	0	0	67	41
	F	29	22	1	0	1	1	1	0	0	0	32	23
	Subtotal¹	77	53	17	9	3	2	2	0	0	0	99	64
30-39	M	73	45	13	10	12	3	5	2	0	0	103	60
	F	37	21	2	1	2	1	3	1	0	0	44	24
	Subtotal¹	110	66	15	11	14	4	8	3	0	0	147	84
40-49	M	71	31	32	24	11	5	8	4	0	0	122	64
	F	40	20	3	2	2	1	4	2	0	0	49	25
	Subtotal¹	111	51	35	26	13	6	12	6	0	0	171	89
50-59	M	55	28	25	16	16	10	5	4	0	0	101	58
	F	28	11	2	1	2	2	0	0	0	0	32	14
	Subtotal¹	83	39	27	17	18	12	5	4	0	0	133	72
60-69	M	33	16	9	7	7	4	6	3	0	0	55	30
	F	21	15	0	0	0	0	2	2	0	0	23	17
	Subtotal¹	54	31	9	7	7	4	8	5	0	0	78	47
70+	M	35	27	3	2	3	1	6	5	0	0	47	35
	F	15	10	0	0	0	0	4	3	0	0	19	13
	Subtotal¹	50	37	3	2	3	1	10	8	0	0	66	48
Unknown	M	7	5	2	1	2	0	1	1	0	0	12	7
	F	1	1	0	0	0	0	0	0	0	0	1	1
	Subtotal¹	18	13	2	1	2	0	1	1	0	0	23	15
ALL AGES	M	418	260	122	87	61	29	46	32	0	3	647	411
	F	232	144	12	8	7	5	17	10	0	0	268	167
	TOTAL¹	660	411	134	95	68	34	63	42	0	3	925	585

¹ Unknown sex included

**Table 37c: Road User Involved In & Responsible For Crashes by Age & Sex
Minor Injury Crash**

Age	Sex	Drivers		Motorcycle Riders		Bicycle Riders		Pedestrians		Other Road Users		ALL ROAD USERS	
		Involved	Responsible	Involved	Responsible	Involved	Responsible	Involved	Responsible	Involved	Responsible	Involved	Responsible
0-15	M	3	3	5	5	23	13	17	14	0	2	48	37
	F	0	0	0	0	5	4	12	7	0	0	17	11
	Subtotal¹	3	3	5	5	28	17	29	21	0	2	65	48
16-19	M	336	246	48	30	19	6	9	4	0	1	412	287
	F	317	216	0	0	6	2	6	4	0	0	329	222
	Subtotal¹	653	462	48	30	25	8	15	8	0	1	741	509
20-24	M	503	314	67	45	40	15	10	7	0	0	620	381
	F	568	296	5	0	9	4	7	2	0	0	589	302
	Subtotal¹	1071	610	72	45	49	19	17	9	0	0	1209	683
25-29	M	507	301	34	15	37	5	8	5	0	0	586	326
	F	479	218	6	3	10	0	13	2	0	0	508	223
	Subtotal¹	986	519	40	18	47	5	21	7	0	0	1094	549
30-39	M	839	424	64	38	83	22	14	7	0	0	1000	491
	F	727	306	9	6	20	2	16	10	0	0	772	324
	Subtotal¹	1566	730	73	44	103	24	30	17	0	0	1772	815
40-49	M	766	382	60	33	77	25	14	8	0	0	917	448
	F	710	290	6	1	15	3	9	3	0	0	740	297
	Subtotal¹	1476	672	66	34	92	28	23	11	0	0	1657	745
50-59	M	635	281	76	41	66	18	9	2	0	0	786	342
	F	493	189	9	7	12	7	9	3	0	0	523	206
	Subtotal¹	1128	470	85	48	78	25	18	5	0	0	1309	548
60-69	M	389	198	31	19	34	18	14	2	0	0	468	237
	F	318	158	0	0	6	3	14	5	0	0	338	166
	Subtotal¹	707	356	31	19	40	21	28	7	0	0	806	403
70+	M	349	218	6	6	10	3	17	5	0	0	382	232
	F	202	126	3	1	0	0	17	2	0	0	222	129
	Subtotal¹	551	344	9	7	10	3	34	7	0	0	604	361
Unknown	M	142	99	0	0	22	12	8	4	0	0	172	115
	F	64	50	0	0	3	0	9	4	0	0	76	54
	Subtotal¹	296	217	2	1	28	12	17	8	0	0	343	238
ALL AGES	M	4469	2466	391	232	411	137	120	58	0	3	5391	2896
	F	3878	1849	38	18	86	25	112	42	0	0	4114	1934
	TOTAL¹	8437	4383	431	251	500	162	232	100	0	3	9600	4899

¹ Unknown sex included

**Table 37d: Road User Involved In & Responsible For Crashes by Age & Sex
Property Damage Crash**

Age	Sex	Drivers		Motorcycle Riders		Bicycle Riders		Pedestrians		Other Road Users		ALL ROAD USERS	
		Involved	Responsible	Involved	Responsible	Involved	Responsible	Involved	Responsible	Involved	Responsible	Involved	Responsible
0-15	M	5	5	1	1	18	5	1	1	0	0	25	12
	F	1	1	0	0	2	2	0	0	0	0	3	3
	Subtotal¹	6	6	1	1	20	7	1	1	0	0	28	15
16-19	M	873	642	32	14	11	3	0	0	0	0	916	659
	F	585	393	3	0	4	2	0	0	0	0	592	395
	Subtotal¹	1459	1036	35	14	15	5	0	0	0	0	1509	1055
20-24	M	1403	880	54	30	21	1	1	1	1	0	1480	912
	F	936	519	5	3	9	0	1	1	0	0	951	523
	Subtotal¹	2340	1399	59	33	30	1	2	2	1	0	2432	1435
25-29	M	1252	688	35	23	17	2	0	0	0	0	1304	713
	F	790	402	4	2	7	0	0	0	2	0	803	404
	Subtotal¹	2042	1090	39	25	24	2	0	0	2	0	2107	1117
30-39	M	2103	1066	58	16	49	10	3	3	0	0	2213	1095
	F	1278	630	5	2	12	1	0	0	0	0	1295	633
	Subtotal¹	3382	1697	63	18	61	11	3	3	0	0	3509	1729
40-49	M	1732	833	69	33	41	5	1	0	1	0	1844	871
	F	1275	557	5	2	6	0	0	0	0	0	1286	559
	Subtotal¹	3007	1390	74	35	47	5	1	0	1	0	3130	1430
50-59	M	1477	673	48	27	28	0	1	1	2	0	1556	701
	F	883	372	2	1	9	2	0	0	0	0	894	375
	Subtotal¹	2360	1045	50	28	37	2	1	1	2	0	2450	1076
60-69	M	988	444	27	13	13	0	0	0	0	0	1028	457
	F	595	278	0	0	2	0	2	0	0	0	599	278
	Subtotal¹	1583	722	27	13	15	0	2	0	0	0	1627	735
70+	M	686	424	6	3	4	0	1	0	0	0	697	427
	F	395	253	0	0	1	0	2	1	0	0	398	254
	Subtotal¹	1081	677	6	3	5	0	3	1	0	0	1095	681
Unknown	M	374	256	42	32	87	31	6	1	0	0	509	320
	F	126	81	0	0	9	3	1	1	0	0	136	85
	Subtotal¹	949	709	65	52	119	41	7	2	1	0	1141	804
ALL AGES	M	10893	5911	372	192	289	57	14	7	4	0	11572	6167
	F	6864	3486	24	10	61	10	6	3	2	0	6957	3509
	TOTAL¹	18209	9771	419	222	373	74	20	10	7	0	19028	10077

¹Unknown sex included

Table 37e: Road User Involved In & Responsible For Crashes by Age & Sex
All crashes

Age	Sex	Drivers		Motorcycle Riders		Bicycle Riders		Pedestrians		Other Road Users		ALL ROAD USERS	
		Involved	Responsible	Involved	Responsible	Involved	Responsible	Involved	Responsible	Involved	Responsible	Involved	Responsible
0-15	M	8	8	7	7	44	21	26	22	0	5	85	63
	F	1	1	0	0	7	6	13	7	0	0	21	14
	Subtotal¹	9	9	7	7	51	27	39	29	0	5	106	77
16-19	M	1246	917	90	53	31	10	12	7	0	2	1379	989
	F	936	634	5	2	10	4	6	4	0	0	957	644
	Subtotal¹	2183	1552	95	55	41	14	18	11	0	2	2337	1634
20-24	M	1980	1252	133	83	65	17	16	13	1	0	2195	1365
	F	1536	838	12	5	18	4	12	5	0	0	1578	852
	Subtotal¹	3517	2090	145	88	83	21	28	18	1	0	3774	2217
25-29	M	1818	1028	86	48	56	8	10	5	0	0	1970	1089
	F	1301	645	11	5	18	1	15	2	2	0	1347	653
	Subtotal¹	3119	1673	97	53	74	9	25	7	2	0	3317	1742
30-39	M	3031	1544	136	65	145	35	25	14	0	0	3337	1658
	F	2048	961	17	10	34	4	19	11	0	0	2118	986
	Subtotal¹	5080	2506	153	75	179	39	44	25	0	0	5456	2645
40-49	M	2586	1255	165	92	130	36	24	13	1	0	2906	1396
	F	2028	868	14	5	24	4	13	5	0	0	2079	882
	Subtotal¹	4614	2123	179	97	154	40	37	18	1	0	4985	2278
50-59	M	2180	985	150	85	110	28	16	8	2	0	2458	1106
	F	1410	574	13	9	23	11	9	3	0	0	1455	597
	Subtotal¹	3590	1559	163	94	133	39	25	11	2	0	3913	1703
60-69	M	1418	662	69	41	55	23	23	5	0	0	1565	731
	F	938	454	0	0	8	3	19	8	0	0	965	465
	Subtotal¹	2356	1116	69	41	63	26	42	13	0	0	2530	1196
70+	M	1084	679	15	11	17	4	28	13	0	0	1144	707
	F	613	390	3	1	1	0	27	8	0	0	644	399
	Subtotal¹	1697	1069	18	12	18	4	55	21	0	0	1788	1106
Unknown	M	523	360	44	33	111	43	15	6	0	0	693	442
	F	191	132	0	0	12	3	10	5	0	0	213	140
	Subtotal¹	1264	939	69	54	149	53	25	11	1	0	1508	1057
ALL AGES	M	15874	8690	895	518	764	225	195	106	4	7	17732	9546
	F	11002	5497	75	37	155	40	143	58	2	0	11377	5632
	TOTAL¹	27429	14636	995	576	945	272	338	164	7	7	29714	15655

¹ Unknown sex included

Table 38: Drivers & Motorcycle Riders Involved in & Responsible for Crashes by Licence Type & Severity

Licence Type	Fatal Crashes		Serious Injury Crashes		Minor Injury Crashes		Property Damage Crashes		ALL CRASHES	
	Involved	Responsible	Involved	Responsible	Involved	Responsible	Involved	Responsible	Involved	Responsible
Learners Permit	1	0	13	10	97	67	165	103	276	180
Probationary Licence	1	1	3	2	39	29	90	59	133	91
Full Licence	100	52	548	318	6874	3247	14055	6829	21577	10446
Unlicensed	5	4	36	34	205	162	342	246	588	446
Conditional Licence	0	0	2	0	6	4	7	3	15	7
Provisional 1 Licence	6	6	83	63	834	564	1728	1209	2651	1842
Provisional 2 Licence	3	3	24	18	227	139	460	294	714	454
Disqualified Licence	4	3	6	5	22	20	42	32	74	60
Unknown	14	10	79	56	564	402	1739	1218	2396	1686
Total	134	79	794	506	8868	4634	18628	9993	28424	15212

**Table 39a: Drivers & Motorcycle Riders Responsible for Crashes by Licence Type and Age
Fatal Crash**

	Learners Permit	Probationary Licence	Full Licence	Unlicensed	Conditional Licence	P1 Licence	P2 Licence	Disqualified	Unknown	Total
0-15	0	0	0	0	0	0	0	0	0	0
16-19	0	0	0	1	0	1	3	0	0	5
20-24	0	1	3	2	0	1	0	0	2	9
25-29	0	0	6	1	0	1	0	2	2	12
30-39	0	0	11	0	0	2	0	1	1	15
40-49	0	0	10	0	0	1	0	0	1	12
50-59	0	0	5	0	0	0	0	0	1	6
60-69	0	0	7	0	0	0	0	0	2	9
70+	0	0	10	0	0	0	0	0	1	11
unknown	0	0	0	0	0	0	0	0	0	0
Total	0	1	52	4	0	6	3	3	10	79

**Table 39b: Drivers & Motorcycle Riders Responsible for Crashes by Licence Type and Age
Serious Injury Crash**

	Learners Permit	Probationary Licence	Full Licence	Unlicensed	Conditional Licence	P1 Licence	P2 Licence	Disqualified	Unknown	Total
0-15	0	0	0	1	0	0	0	0	0	1
16-19	5	0	5	6	0	30	11	1	2	60
20-24	4	0	37	6	0	18	4	1	12	82
25-29	0	0	40	7	0	7	2	0	6	62
30-39	0	0	60	4	0	5	0	1	7	77
40-49	1	0	55	8	0	3	1	2	7	77
50-59	0	2	50	2	0	0	0	0	2	56
60-69	0	0	34	0	0	0	0	0	4	38
70+	0	0	37	0	0	0	0	0	2	39
unknown	0	0	0	0	0	0	0	0	14	14
Total	10	2	318	34	0	63	18	5	56	506

**Table 39c: Drivers & Motorcycle Riders Responsible for Crashes by Licence Type and Age
Minor Injury Crash**

	Learners Permit	Probationary Licence	Full Licence	Unlicensed	Conditional Licence	P1 Licence	P2 Licence	Disqualified	Unknown	Total
0-15	0	0	0	8	0	0	0	0	0	8
16-19	39	0	44	5	0	303	85	2	14	492
20-24	15	1	387	31	2	145	33	4	37	655
25-29	6	8	379	37	1	58	11	3	34	537
30-39	4	11	632	46	1	38	6	4	32	774
40-49	2	5	635	20	0	14	1	4	25	706
50-59	0	2	478	8	0	4	3	2	21	518
60-69	0	1	357	3	0	1	0	1	12	375
70+	1	1	334	4	0	1	0	0	10	351
unknown	0	0	1	0	0	0	0	0	217	218
Total	67	29	3247	162	4	564	139	20	402	4634

**Table 39d: Drivers & Motorcycle Riders Responsible for Crashes by Licence Type and Age
Property Damage Crash**

	Learners Permit	Probationary Licence	Full Licence	Unlicensed	Conditional Licence	P1 Licence	P2 Licence	Disqualified	Unknown	Total
0-15	0	0	0	7	0	0	0	0	0	7
16-19	46	1	123	16	0	654	187	3	20	1050
20-24	29	7	868	47	1	301	71	3	105	1432
25-29	13	12	781	44	1	125	21	8	110	1115
30-39	11	24	1399	75	1	87	8	8	102	1715
40-49	2	11	1279	39	0	31	6	8	49	1425
50-59	2	4	1008	7	0	8	1	2	41	1073
60-69	0	0	707	6	0	2	0	0	20	735
70+	0	0	661	4	0	0	0	0	15	680
unknown	0	0	3	1	0	1	0	0	756	761
Total	103	59	6829	246	3	1209	294	32	1218	9993

**Table 39e: Drivers & Motorcycle Riders Responsible for Crashes by Licence Type and Age
All crashes**

	Learners Permit	Probationary Licence	Full Licence	Unlicensed	Conditional Licence	P1 Licence	P2 Licence	Disqualified	Unknown	Total
0-15	0	0	0	16	0	0	0	0	0	16
16-19	90	1	172	28	0	988	286	6	36	1607
20-24	48	9	1295	86	3	465	108	8	156	2178
25-29	19	20	1206	89	2	191	34	13	152	1726
30-39	15	35	2102	125	2	132	14	14	142	2581
40-49	5	16	1979	67	0	49	8	14	82	2220
50-59	2	8	1541	17	0	12	4	4	65	1653
60-69	0	1	1105	9	0	3	0	1	38	1157
70+	1	1	1042	8	0	1	0	0	28	1081
unknown	0	0	4	1	0	1	0	0	987	993
Total	180	91	10446	446	7	1842	454	60	1686	15212

Reference Information for South Australia

Population
Licence
Vehicle Information

Table 40: Estimated Population¹ by Age and Sex

Age Group	Sex		ALL PERSONS
	Male	Female	
0-15	162 927	154 668	317 595
16-19	43 306	41 194	84 500
20-24	58 816	55 681	114 497
25-29	58 902	56 602	115 504
30-39	107 559	106 324	213 883
40-49	113 192	114 010	227 202
50-59	110 997	114 208	225 205
60-69	92 558	97 200	189 758
70+	87 283	110 287	197 570
TOTAL	835 540	850 174	1 685 714

Table 41: Licence and Permit Holders² by Age and Sex

Age Group	Sex			ALL PERSONS
	Male	Female	Unknown	
16-19	31678	33024	1	64703
20-24	46325	47960	2	94287
25-29	48299	50782	3	99084
30-39	96716	101102	3	197821
40-49	106450	110017	3	216470
50-59	105093	109529	1	214623
60-69	86145	91649	1	177795
70+	59098	72687	0	131785
TOTAL	579804	616750	14	1196568

¹ Population as of 30 June. Source: Australian Bureau of Statistics, *Australian Demographic Statistics*, cat.no. 3101.0

² At 30 June. Source: TRUMPS database, Registration & Licensing Section, DPTI

Table 42: Motor Vehicle on Register¹ by Vehicle Type

Type of Vehicle	ALL VEHICLES
Cars & Station Wagons	1 013 631
Utilities	145 967
Panel Vans	35 454
Rigid & Other Trucks	42 170
Articulated Trucks	8 111
Other Commercials ²	12 862
Buses	4 144
Motorcycles	45 026
Other ³	15 612
TOTAL	1 322 977

Table 43: Vehicle Kilometres Travelled⁴ (VKT) by Vehicle Type

Type of Vehicle	TOTAL VKT ('000 000)
Passenger Vehicle	12 203
Light Commercials	2 564
Rigid Trucks	595
Articulated Trucks	630
Non-freight Carrying Trucks	13
Motorcycles	163
Buses	145
TOTAL	16 313

¹ At 30 June. Excludes tractors, trailers, caravans, plant and equipment. Source: TRUMPS database, Registration & Licensing Section, DPTI

² Includes animal transporter vehicle, drilling rig vehicle, earth moving vehicle, garbage truck, industrial vehicle, mobile crane vehicle, tanker vehicle

³ Includes ambulance, armoured vehicle, fork lift, land implement vehicle, quad cycle, tricycle, golf buggy

⁴ Travel for the year ended 30 June 2012. Source: Australian Bureau of Statistics, *Survey of Motor Vehicle Use*, cat. no. 9208.0

