

DELIVERING OUR TRANSPORT FUTURE NOW

a guide to using the southern expressway



For further information

email: dpti.southernexpressway@sa.gov.au

visit: www.infrastructure.sa.gov.au



Government of South Australia

Department of Planning,
Transport and Infrastructure

The Southern Expressway is an 18.5 kilometre two-way expressway between Darlington and Old Noarlunga which provides 24/7 free-flow travel between the metropolitan area and southern Adelaide.

The Southern Expressway is entered or exited at six locations:

- > Main South Road, Darlington
- > Marion Road, Sturt
- > Panalatinga Road / Main South Road, Reynella
- > Sherriffs Road, Reynella
- > Beach Road, Noarlunga
- > Main South Road, Old Noarlunga

Please see the plan overleaf for further details on how to use these interchanges.

The northbound carriageway of the expressway has four lanes from Darlington to Reynella and two lanes from Reynella to Old Noarlunga.

The southbound carriageway has three lanes from Darlington to Reynella and two lanes from Reynella to Old Noarlunga.

Pedestrians and Cyclists

There are five pedestrian bridges crossing the expressway to maintain connectivity between communities on either side of the expressway:

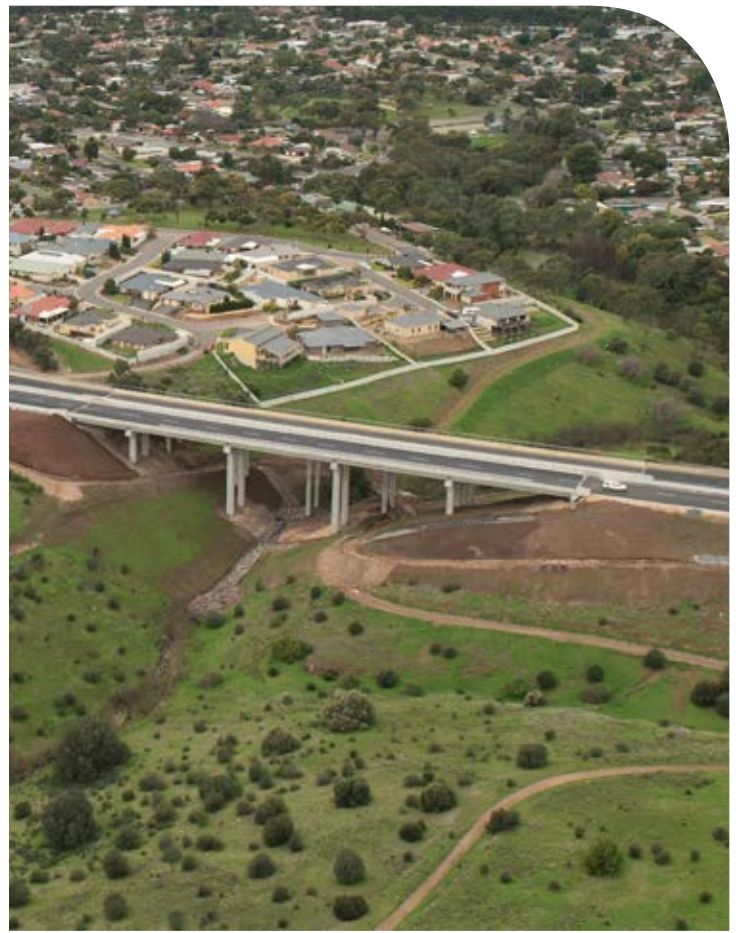
- > Sugarbush Path
- > Glenhelen Path
- > Poznan Path
- > Peppermint Path
- > Perry Path

The Patrick Yonker Veloway - a sealed bikeway for the exclusive use of cyclists - runs continuously alongside the Southern Expressway for a distance of approximately 7 km, from Seacombe Road to the Reynella Interchange.

South of the Reynella Interchange the bikeway becomes a shared use path for the remaining 11.5 km of the Southern Expressway.

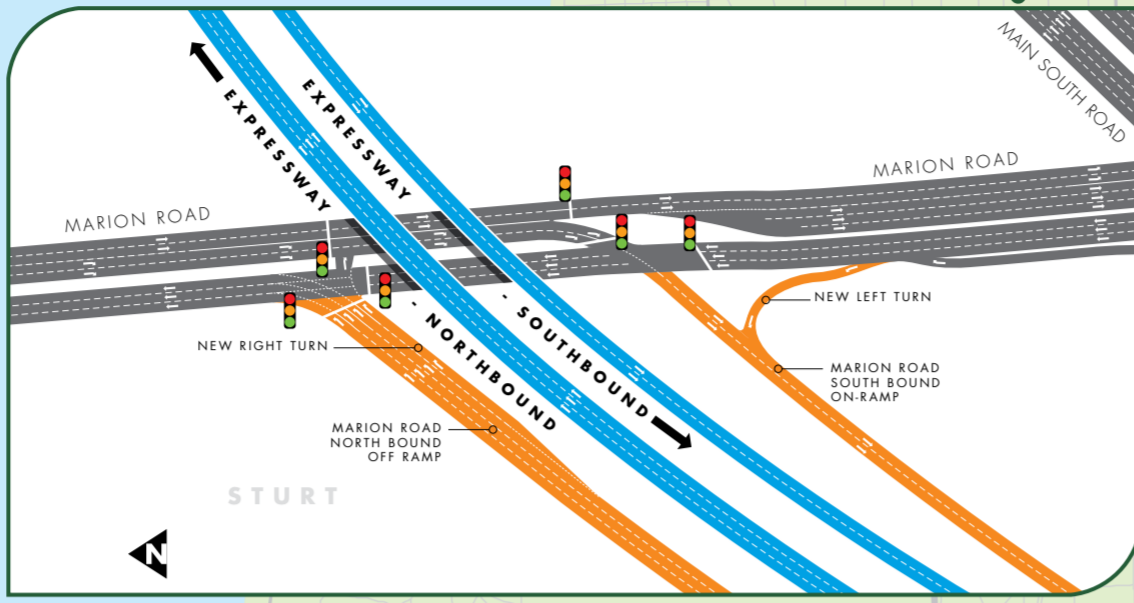
A recreational shared use path runs along the entire length of the western side of the expressway.



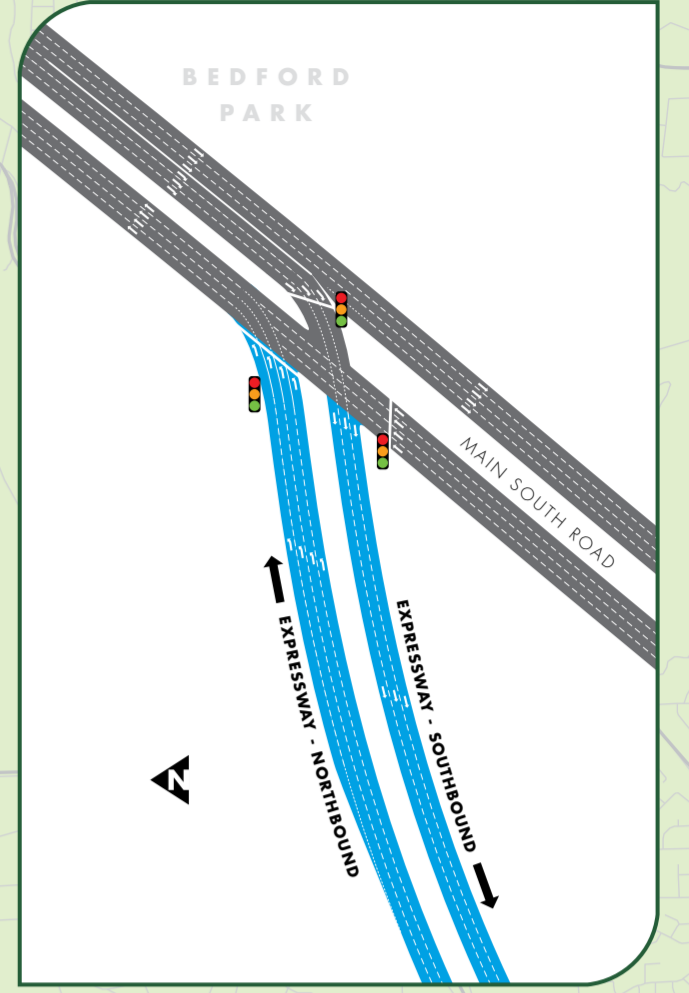


southern expressway duplication interchange details

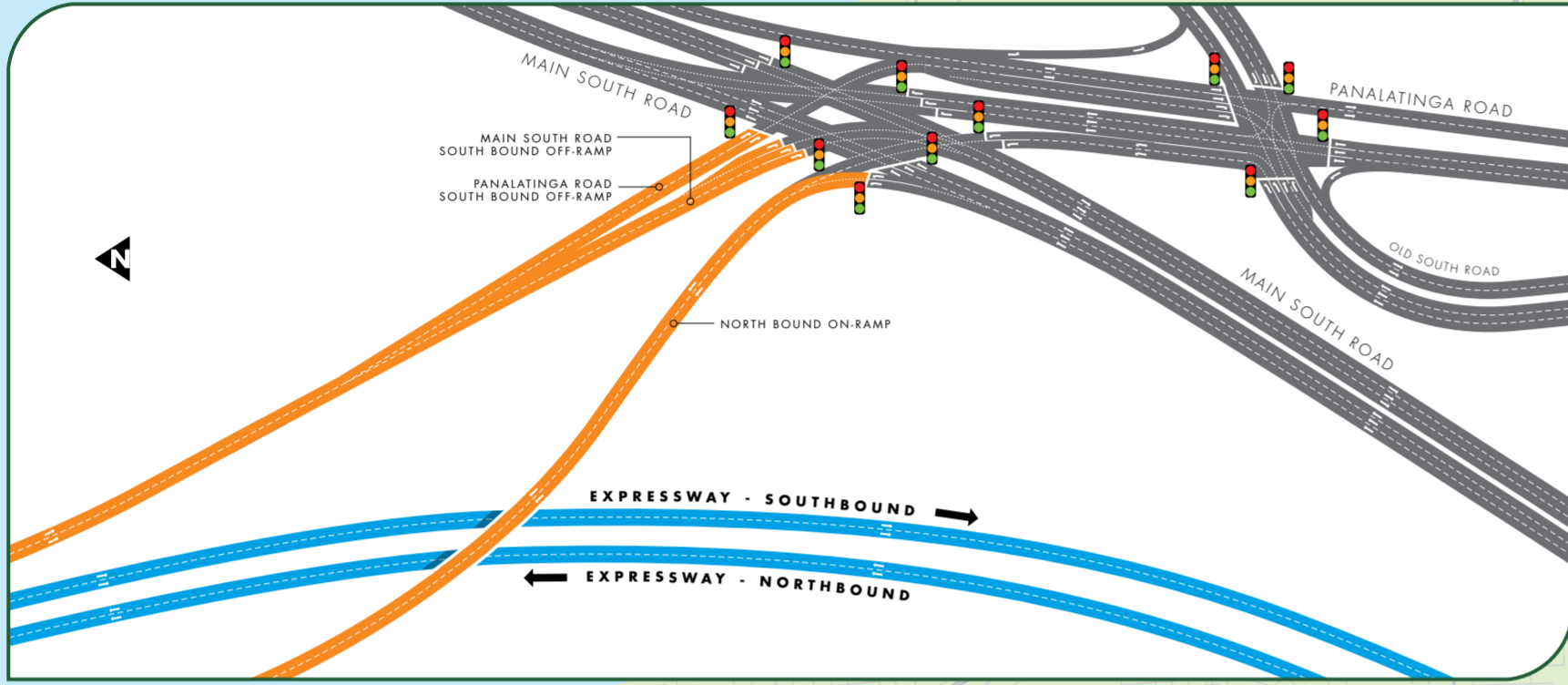
-  EXPRESSWAY
-  OFF/ON RAMP
-  TRAFFIC SIGNALS



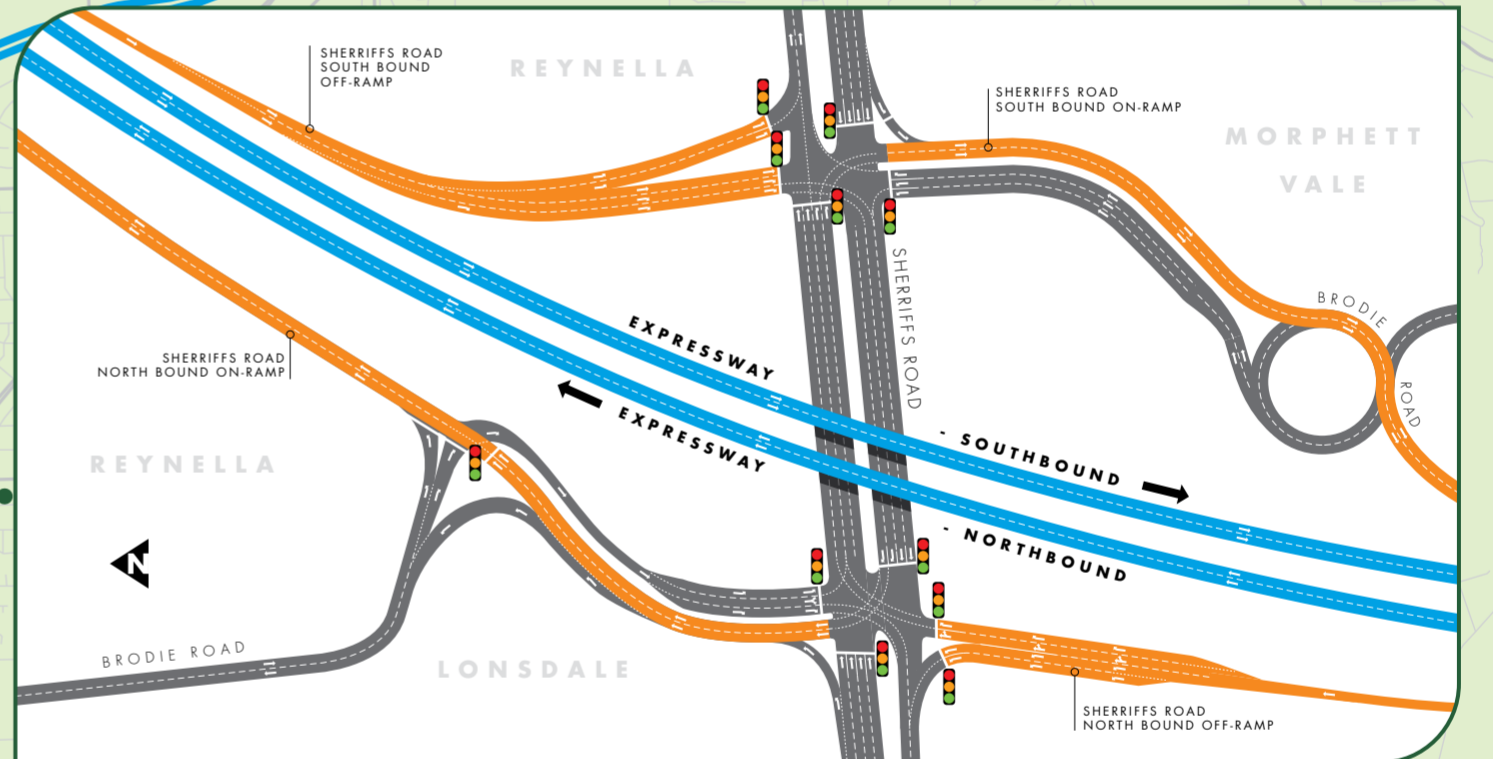
MARION ROAD



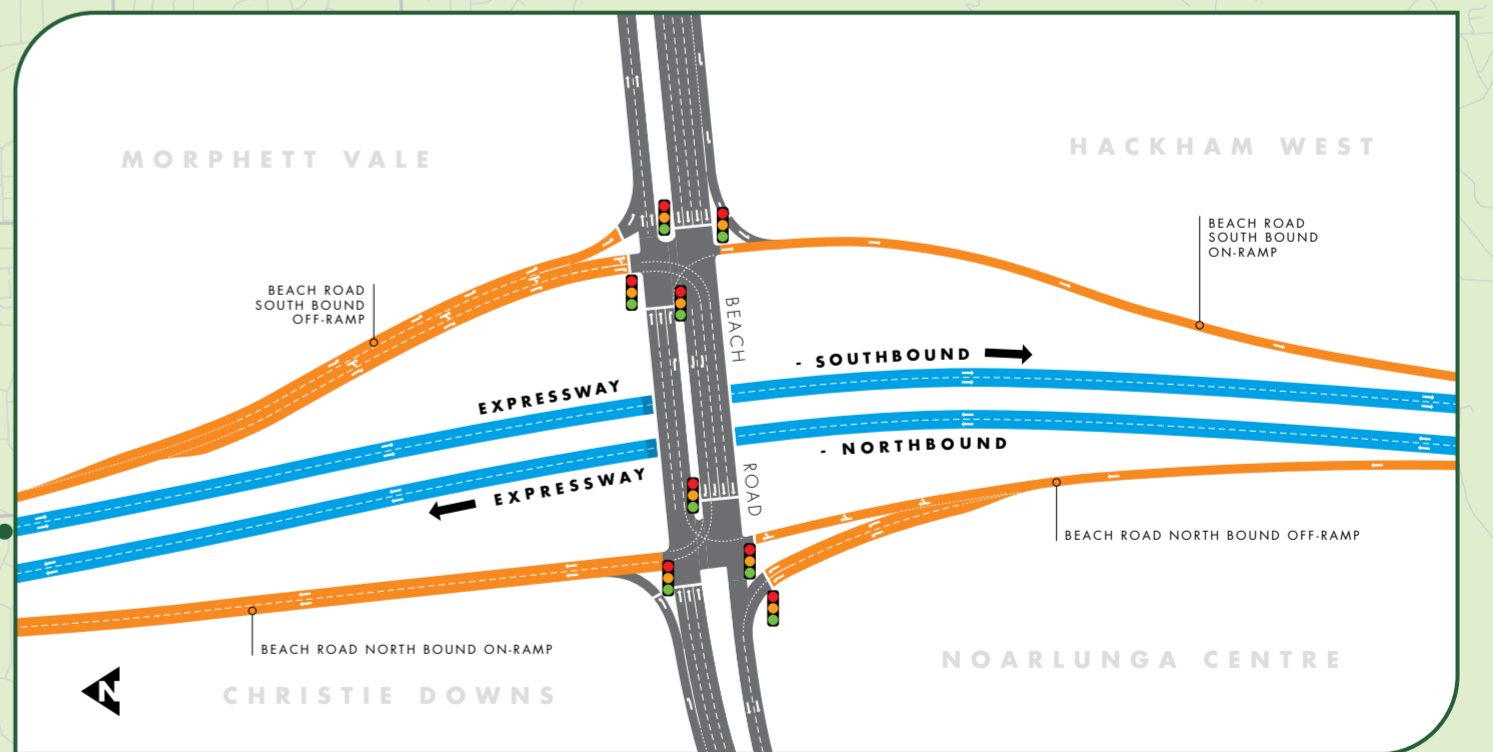
DARLINGTON



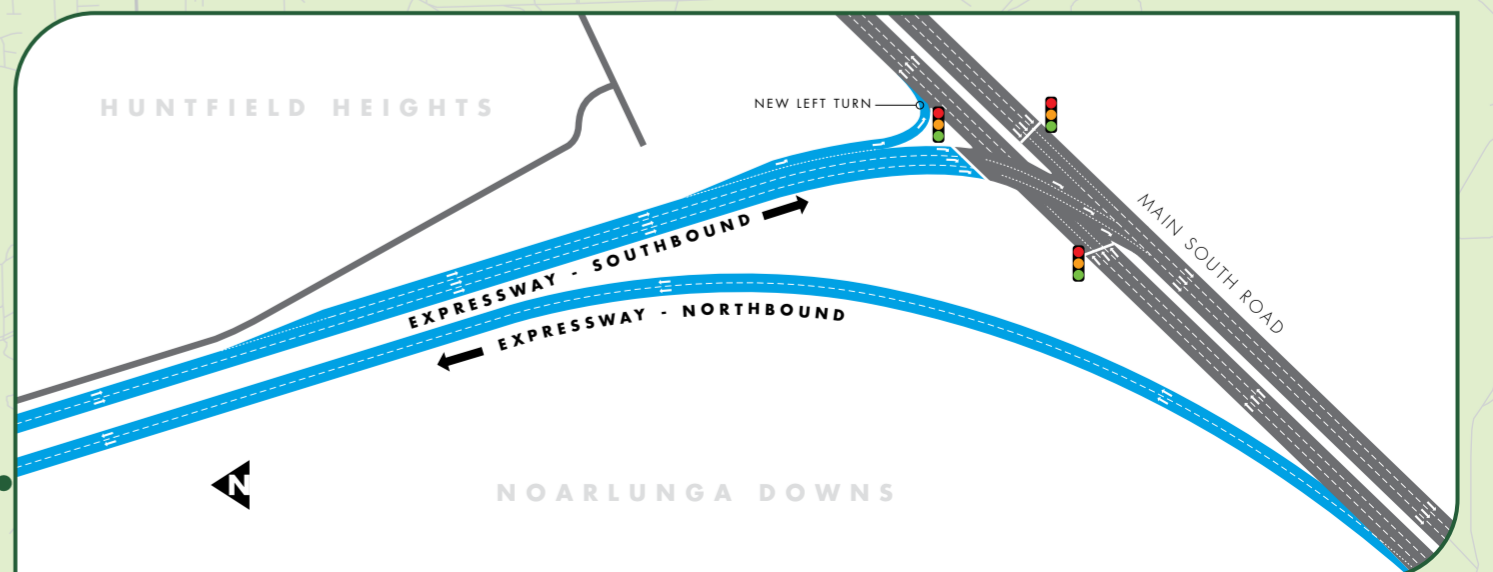
REYNELLA



SHERRIFFS ROAD



BEACH ROAD



OLD NOARLUNGA

