

# Copper Coast Development Plan Map

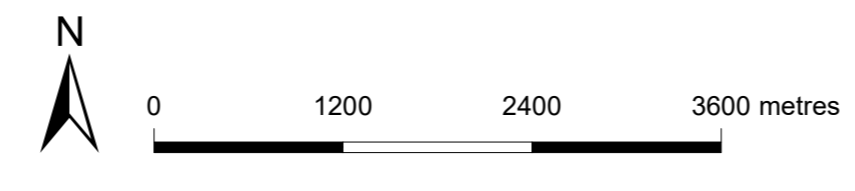
- Commercial
- Community Facilities
- Country Township
- Deferred Urban
- Environmental Constraint
- Heritage
- Industrial
- Infrastructure
- Miscellaneous
- Primary Production / Mining
- Residential
- Rural Living
- Development Plan
- Zoning
- Policy Area
- Precinct
- Local government boundary
- Cadastre
- Refer to town map
- Coastline / River Murray

**Produced by** Department of Planning, Transport and Infrastructure  
 Planning Division  
 GPO Box 1815 Adelaide SA 5001  
 www.ssa.gov.au  
 Lambert Conformal Conic  
**9 June 2020**

**Projection** Lambert Conformal Conic  
**Compiled** 9 June 2020

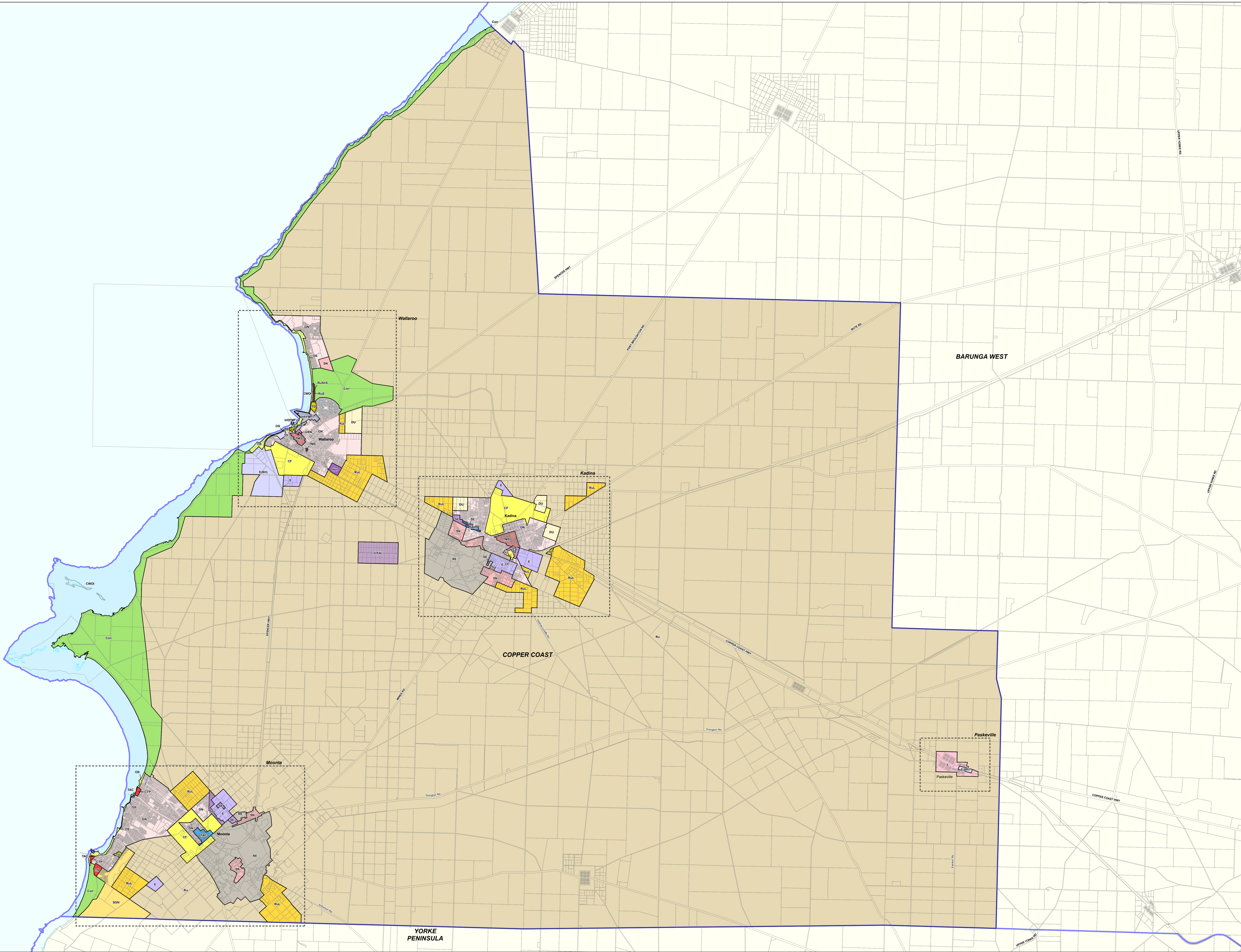
© Government of South Australia 2017  
 No part of this document may be reproduced, stored in a retrieval system, or transmitted in any form, or by any means, without the prior written permission of the publisher, Department of Planning, Transport and Infrastructure.

While every reasonable effort has been made to ensure that this document is correct at the time of publication, the State of South Australia and its agencies, representatives, employees and contractors disclaim any and all liability to any person in respect to anything or the consequence of anything done or omitted to be done in reliance upon the whole or any part of this document.



- |  |  |   |   |
|--|--|---|---|
| <ul style="list-style-type: none"> <li>AA - Airport</li> <li>BH - Bulk Handling</li> <li>C - Commercial</li> <li>CP - Caravan and Tourist Park</li> <li>Con - Conservation</li> <li>CoCon - Coastal Conservation</li> <li>CoMar - Coastal Marina</li> <li>CoOS - Coastal Open Space</li> <li>CoSet - Coastal Settlement</li> <li>Co - Community</li> <li>DU - Deferred Urban</li> <li>HM - Historic Mining</li> <li>Ind - Industry</li> <li>LCC - Local Centre</li> <li>LI - Light Industry</li> </ul> | <ul style="list-style-type: none"> <li>MU - Mixed Use</li> <li>PPPro - Primary Production</li> <li>R - Residential</li> <li>RuL - Rural Living</li> <li>SU - Special Use</li> <li>Se - Settlement</li> <li>T - Township</li> <li>TA - Tourist Accommodation</li> <li>TCC - Town Centre</li> <li>TranInf - Transition (Infrastructure)</li> <li>Policy Area</li> <li>1 - Moonta Mines</li> <li>10 - Moonta</li> <li>11 - Wallaroo</li> <li>12 - Bulky Goods</li> <li>13 - Motor Vehicle Showroom</li> </ul> | <ul style="list-style-type: none"> <li>14 - Wallaroo Shores</li> <li>15 - North Beach</li> <li>16 - Power Court</li> <li>2 - Wallaroo Mines</li> <li>3 - Wallaroo Town</li> <li>4 - Infrastructure</li> <li>5 - Home Industry</li> <li>6 - Golf Course</li> <li>7 - Low Density</li> <li>8 - Wallaroo Marina</li> <li>9 - Kadina</li> <li>13 - Cornish Village</li> <li>14 - Matta Museum</li> <li>15 - Mines Buffer</li> <li>16 - Mines Industry</li> <li>17 - Residential Kadina</li> <li>18 - Residential Matta</li> <li>19 - Matta</li> <li>2 - Hancock</li> <li>20 - Rural Low Density</li> <li>21 - Rural Core</li> <li>22 - Commercial Area</li> <li>23 - Matta Rural Accommodation</li> <li>24 - Wallaroo Shores Medium Density</li> <li>25 - Mixed Use</li> <li>3 - Hughes</li> <li>4 - Mine Management</li> </ul> | <ul style="list-style-type: none"> <li>5 - Moonta Mines Buffer</li> <li>6 - Moonta Station</li> <li>7 - Precipitation Works</li> <li>8 - Residential - Moonta Mines and North Yalla</li> <li>9 - Ruyters</li> </ul> |
|--|--|---|---|





**Copper Coast**  
**2019 Code Consultation Map**  
**P&D Code Zones - DRAFT**

- |                           |   |  |
|---------------------------|---|--|
| <b>P&amp;D Code Zones</b> | <ul style="list-style-type: none"> <li>General Neighbourhood</li> <li>Rural Settlement</li> <li>Rural Shack Settlement</li> <li>Suburban Greenfield Neighbourhood</li> <li>Suburban Neighbourhood</li> <li>Township</li> <li>Urban Renewal Neighbourhood</li> <li>Deferred Urban</li> </ul> | <ul style="list-style-type: none"> <li>Rural Living</li> <li>Suburban Employment</li> <li>Suburban Business and Innovation</li> <li>Township Activity Centre</li> <li>Employment</li> <li>Employment (Bulk Handling)</li> <li>Home Industry</li> </ul> |
|---------------------------|---|--|

- |   |   |
|---|---|
| <ul style="list-style-type: none"> <li>Suburban Employment</li> <li>Tourism Development</li> <li>Township Main Street</li> <li>Productive Economy - Primary Industry</li> <li>Rural</li> <li>Resource Extraction</li> </ul> | <ul style="list-style-type: none"> <li>Resilient Communities &amp; Environment</li> <li>Conservation</li> <li>Open Space</li> <li>Coastal Waters and Offshore Islands</li> <li>Local government boundary</li> <li>Cadastre</li> <li>Refer to town map</li> <li>Coastline HWM</li> </ul> |
|---|---|

- |   |  |
|---|--|
| <ul style="list-style-type: none"> <li>SE - Suburban Employment</li> <li>SGN - Suburban Greenfield Neighbourhood</li> <li>SN - Suburban Neighbourhood</li> <li>T - Township</li> <li>TAC - Township Activity Centre</li> <li>TD - Tourism Development</li> <li>TMS - Township Main Street</li> <li>URN - Urban Renewal Neighbourhood</li> </ul> | <ul style="list-style-type: none"> <li>SBIn - Suburban Business and Innovation</li> <li>CF - Community Facilities</li> <li>CTP - Caravan and Tourist Park</li> <li>Con - Conservation</li> <li>DU - Deferred Urban</li> <li>E - Employment</li> <li>EBH - Employment (Bulk Handling)</li> <li>GN - General Neighbourhood</li> <li>HI - Home Industry</li> <li>IHA - Infrastructure (Airfield)</li> <li>IMFM - Infrastructure (Ferry and Marina Facilities)</li> <li>RI - Resource Extraction</li> <li>Ru - Rural</li> <li>RuL - Rural Living</li> <li>RuS - Rural Settlement</li> <li>RuBS - Rural Shack Settlement</li> </ul> |
|---|--|

**Produced by** Department of Planning, Transport and Infrastructure  
 Planning and Land Use Services  
 GPO Box 1815 Adelaide SA 5001  
 www.sa.gov.au  
**Projection** Lambert Conformal Conic  
**Compiled** 30 September 2019

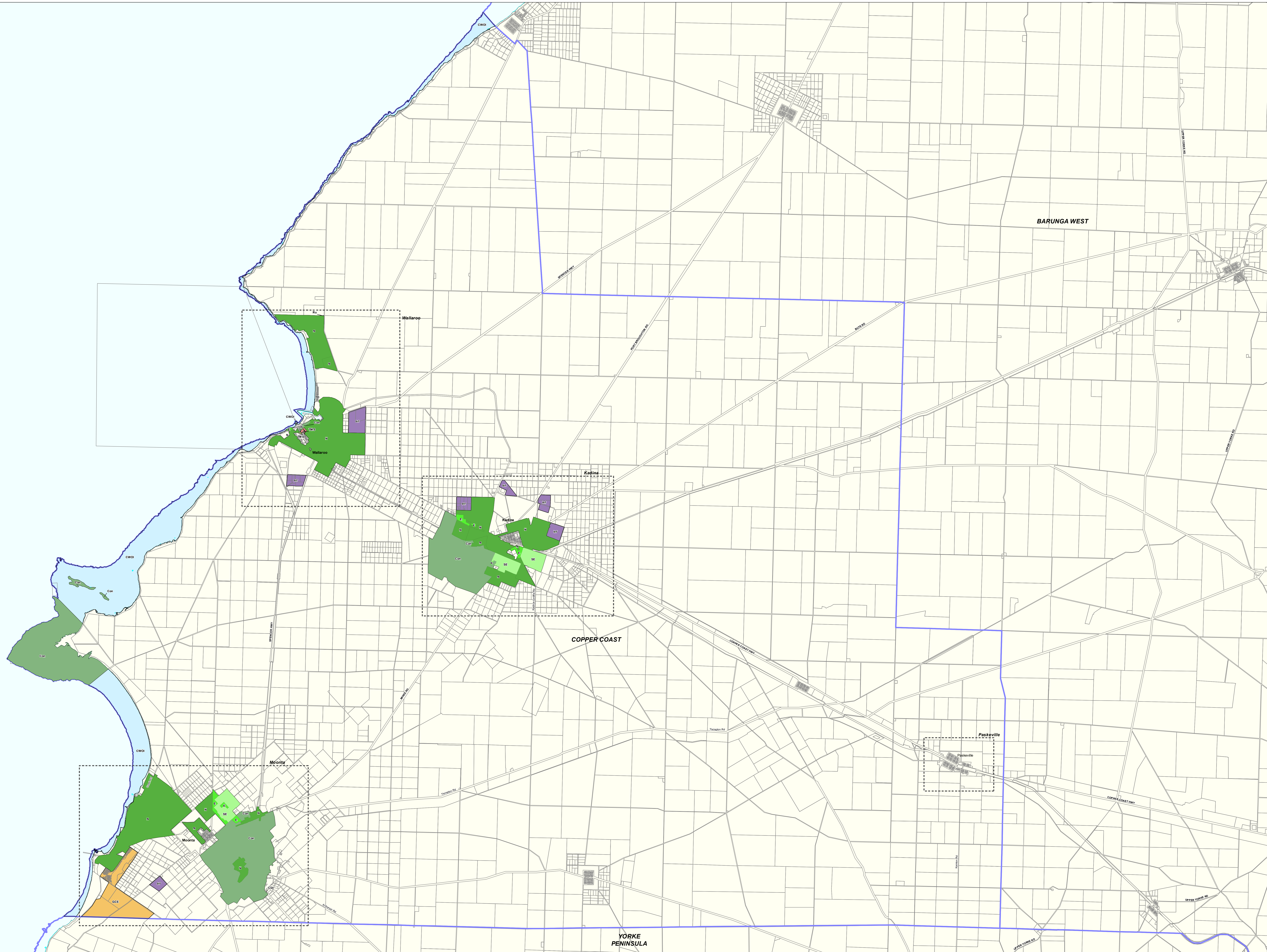
© Government of South Australia 2019  
 No part of this document may be reproduced, stored in a retrieval system, or transmitted in any form or by any means, without the prior written permission of the publisher, Department of Planning, Transport and Infrastructure.

While every reasonable effort has been made to ensure that this document is correct at the time of publication, the State of South Australia and its agencies, representatives, employees and contractors disclaim any and all liability to any person in respect to anything or the consequences of anything done or omitted to be done in reliance upon the whole or any part of this document.

0 1200 2400 3600 metres

**Government of South Australia**  
 Department of Planning,  
 Transport and Infrastructure  
 PLAN 02 3812





# Copper Coast

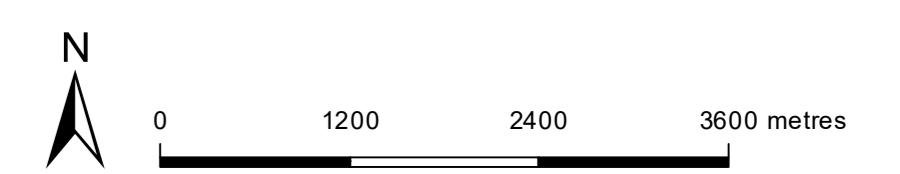
## P&D Code Zones - DRAFT

- |  |  |                                     |
|--|--|-------------------------------------|
| <b>P&amp;D Code Zones</b>              | <b>Productive Economy - Mixed Use</b>          | <b>Open Space</b>                   |
| People & Neighbourhoods - Residential  | Township Main Street                           | Coastal Waters and Offshore Islands |
| Golf Course Estate                     | Infrastructure & Movement Systems              | Local government boundary           |
| Neighbourhood                          | Infrastructure                                 | Catastre                            |
| <b>Productive Economy - Employment</b> | <b>Productive Economy - Primary Industry</b>   | Refer to town map                   |
| Employment                             | Rural  | Coastline HWM                       |
| Strategic Employment                   | <b>Resilient Communities &amp; Environment</b> |                                     |
| Tourism Development                    | Conservation                                   |                                     |

## 2020 Updated Code Consultation Map

Produced by Attorney-General's Department  
 Planning and Land Use Services  
 GPO Box 1815 Adelaide SA 5001  
 www.sa.gov.au  
 Lambert Conformal Conic  
 4 November 2020

Projection  
 Completed  
 © Government of South Australia 2020  
 No part of this document may be reproduced, stored in a retrieval system, or transmitted in any form, or by any means, without the prior written permission of the publisher, the Attorney-General's Department.  
 While every reasonable effort has been made to ensure that this document is correct at the time of publication, the State of South Australia and its agencies, representatives, employees and contractors disclaim any and all liability to any person in respect to any loss or the consequences of any action taken or omitted to be taken in reliance upon the whole or any part of this document.

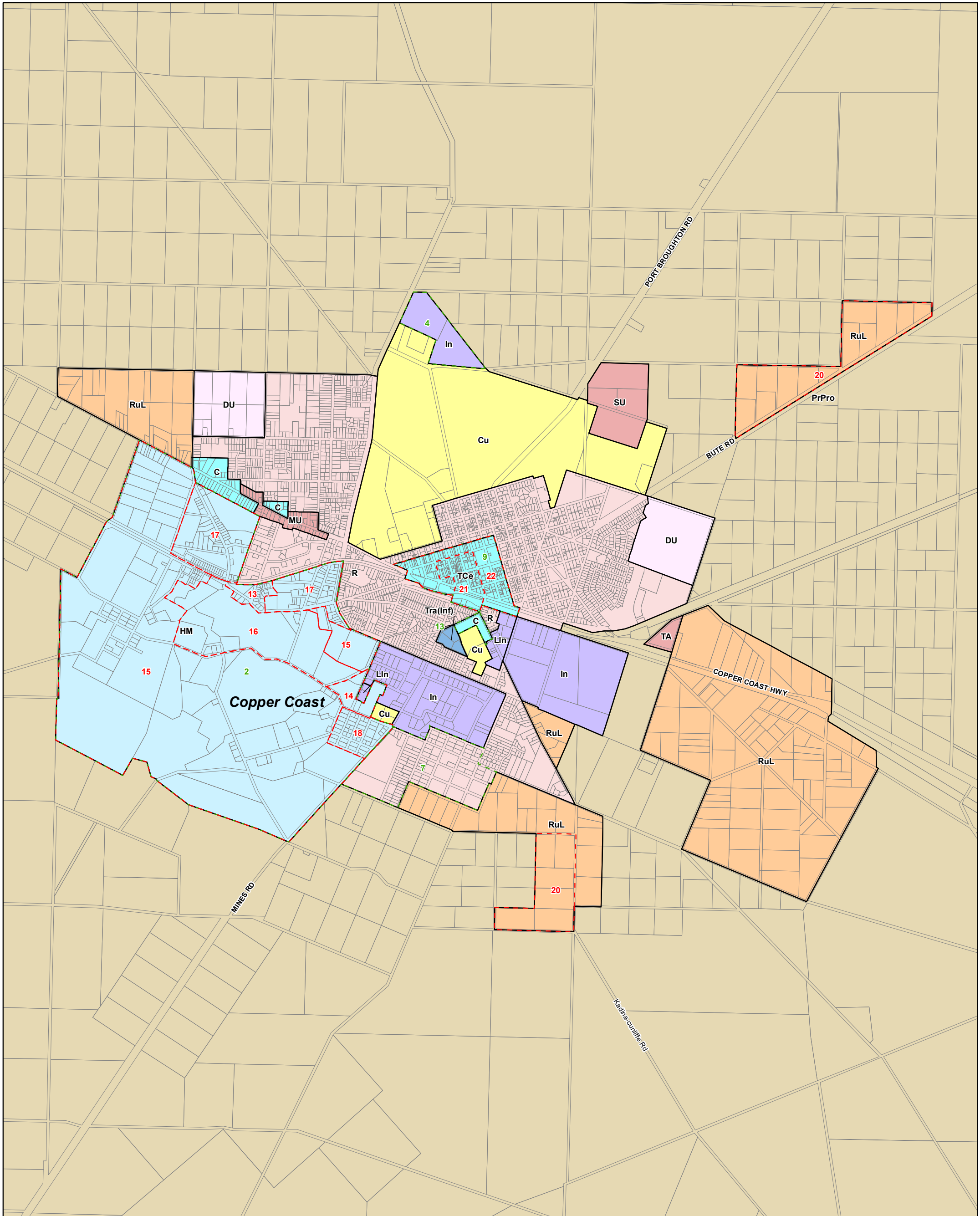


PLAN ID: 1812



Current Development Plan Zone	Current Development Plan Policy Area	Current Development Plan Precinct	Consultation November 2019 Code Proposal	Consultation November 2020 Code Proposal	Planning & Design Code Subzone
Airfield			Infrastructure (Airfield)	Infrastructure (Airfield)	
Bulk Handling			Employment (Bulk Handling)	Employment (Bulk Handling)	
Caravan and Tourist Park			Caravan and Tourist Park	Caravan and Tourist Park	
Coastal Conservation			Conservation	Conservation	
Coastal Marina			Infrastructure (Ferry and Marina Facilities)	Infrastructure (Ferry and Marina Facilities)	
Coastal Marina		Marina Tourist Accommodation Precinct 23	Infrastructure (Ferry and Marina Facilities)	Infrastructure (Ferry and Marina Facilities)	
Coastal Open Space			Open Space	Open Space	
Coastal Settlement			Rural Shack Settlement	Rural Shack Settlement	
Commercial			Suburban Employment	Employment	
Commercial	Bulky Goods Policy Area 12		Suburban Employment	Employment	
Commercial	Motor Vehicle Showroom Policy Area 13		Suburban Employment	Employment	
Community			Community Facilities	Community Facilities	
Conservation			Conservation	Conservation	
Deferred Urban			Deferred Urban	Infrastructure	
Historic Mining	Moonta Mines	Hamley	Resource Extraction	Conservation	Dwelling
Historic Mining	Moonta Mines	Hancocks	Resource Extraction	Conservation	Dwelling
Historic Mining	Moonta Mines	Hughes	Resource Extraction	Conservation	Dwelling
Historic Mining	Moonta Mines	Mine Management	Resource Extraction	Conservation	Dwelling
Historic Mining	Moonta Mines	Moonta Mines Buffer	Resource Extraction	Conservation	Dwelling
Historic Mining	Moonta Mines	Moonta Station	Resource Extraction	Conservation	Dwelling
Historic Mining	Moonta Mines	Precipitation Works	Resource Extraction	Conservation	Dwelling
Historic Mining	Moonta Mines	Residential - Moonta Mines and North Yelta	Suburban Neighbourhood	Neighbourhood	
Historic Mining	Moonta Mines	Richmans	Resource Extraction	Conservation	Dwelling
Historic Mining	Moonta Mines	Ryans	Resource Extraction	Conservation	Dwelling
Historic Mining	Moonta Mines	Taylors	Resource Extraction	Conservation	Dwelling
Historic Mining	Moonta Mines	Yelta Slimes	Resource Extraction	Conservation	Dwelling
Historic Mining	Wallaroo Mines	Cornish Village	Suburban Neighbourhood	Conservation	Small Scale Settlement
Historic Mining	Wallaroo Mines	Matta Museum	Resource Extraction	Conservation	Dwelling
Historic Mining	Wallaroo Mines	Mines Buffer	Resource Extraction	Conservation	Dwelling
Historic Mining	Wallaroo Mines	Mines Industry	Resource Extraction	Conservation	Dwelling
Historic Mining	Wallaroo Mines	Residential Kadina	Suburban Neighbourhood	Neighbourhood	
Historic Mining	Wallaroo Mines	Residential Matta	Suburban Neighbourhood	Neighbourhood	
Historic Mining	Wallaroo Town		Resource Extraction	Conservation	
Industry			Employment	Strategic Employment	
Industry	Infrastructure Policy Area 4		Employment	Infrastructure	

Current Development Plan Zone	Current Development Plan Policy Area	Current Development Plan Precinct	Consultation November 2019 Code Proposal	Consultation November 2020 Code Proposal	Planning & Design Code Subzone
Light Industry			Suburban Employment	Employment	
Light Industry	Home Industry Policy Area 5		Home Industry	Home Industry	
Local Centre			Township Activity Centre	Township Activity Centre	
Mixed Use			Suburban Business and Innovation	Neighbourhood	
Primary Production			Rural	Rural	
Residential			General Neighbourhood	Neighbourhood	
Residential	Golf Course		Suburban Greenfield Neighbourhood	Golf Course Estate	
Residential	Low Density		Suburban Neighbourhood	Neighbourhood	
Residential	Wallaroo Marina		General Neighbourhood	Neighbourhood	Waterfront
Residential	Wallaroo Marina	Marina	General Neighbourhood	Neighbourhood	Waterfront
Residential	Wallaroo Shores		General Neighbourhood	Neighbourhood	
Residential	Wallaroo Shores	Wallaroo Shores Medium Density	General Neighbourhood	Neighbourhood	
Rural Living			Rural Living	Rural Living	
Rural Living		Rural Low Density	Rural Living	Rural Living	
Settlement			Rural Settlement	Rural Settlement	
Special Use			Deferred Urban	Infrastructure	
Tourist Accommodation			Tourism Development	Tourism Development	
Tourist Accommodation	North Beach Policy Area 15		Suburban Neighbourhood	Neighbourhood	
Tourist Accommodation	Pamir Court Policy Area 16		General Neighbourhood	Neighbourhood	
Town Centre	Kadina	Commercial Area	Township Main Street	Township Main Street	
Town Centre	Kadina	Retail Core	Township Main Street	Township Main Street	
Town Centre	Moonta 10		Township Activity Centre	Township Activity Centre	
Town Centre	Wallaroo		Township Main Street	Township Main Street	
Town Centre	Wallaroo	Mixed Use 25	Urban Renewal Neighbourhood	Township Main Street	
Township			Township	Township	
Transition (Infrastructure)			Deferred Urban	Deferred Urban	



# Kadina - Copper Coast

- |                             |                           |
|-----------------------------|---------------------------|
| Commercial                  | Residential               |
| Community Facilities        | Rural Living              |
| Deferred Urban              | Development Plan          |
| Heritage                    | Zoning                    |
| Industrial                  | Policy Area               |
| Infrastructure              | Local government boundary |
| Miscellaneous               | Cadastre                  |
| Primary Production / Mining |                           |

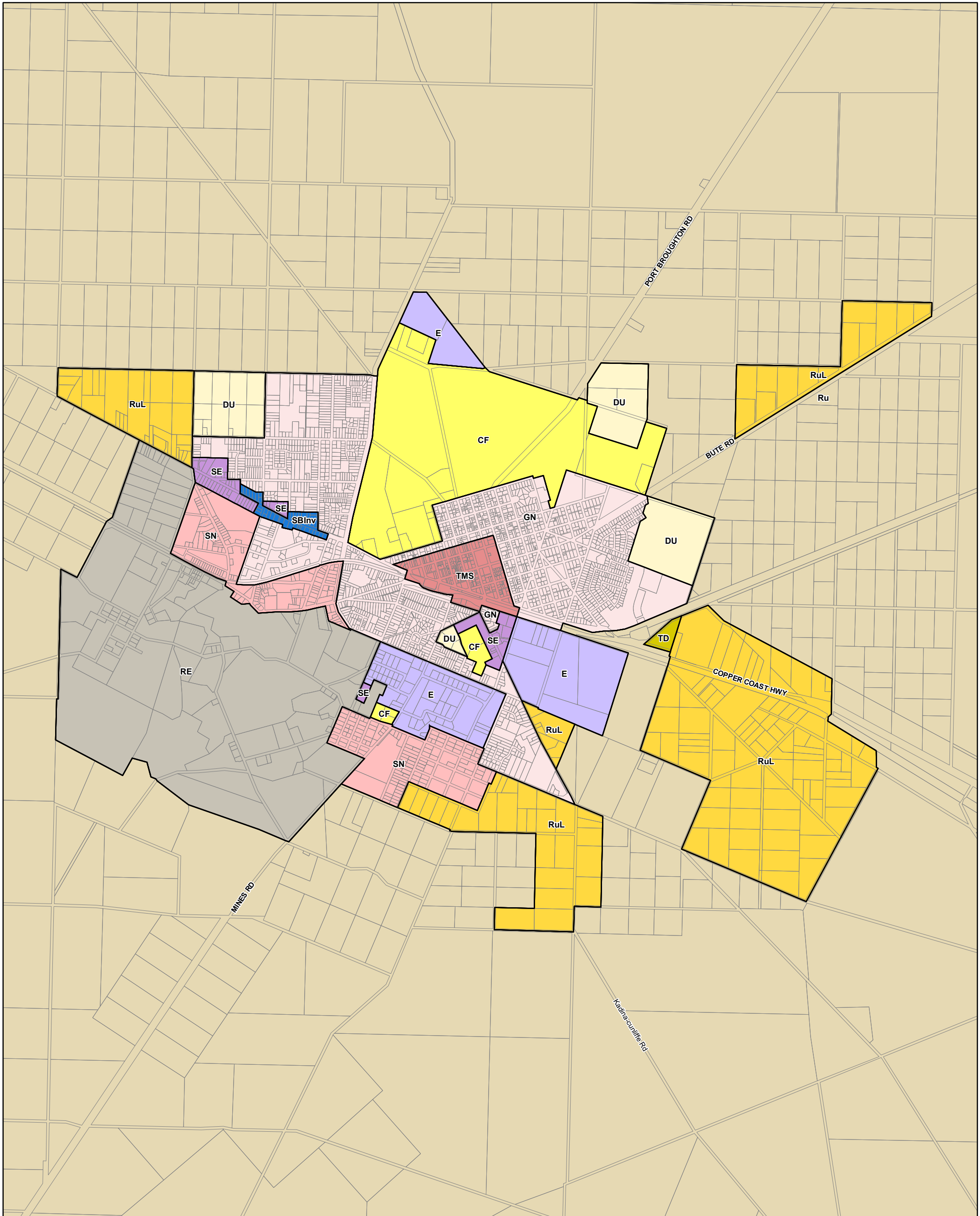
## Development Plan Map

0 320 640 960 metres

Map produced - 4 November 2020  
 © Government of South Australia PLN ID: 5464

- |  |                         |
|--|-------------------------|
| <b>Zoning</b>                          | 2 - Wallaroo Mines      |
| C - Commercial                         | 4 - Infrastructure      |
| Cu - Community                         | 7 - Low Density         |
| DU - Deferred Urban                    | 9 - Kadina              |
| HM - Historic Mining                   | <b>Precinct</b>         |
| In - Industry                          | 13 - Cornish Village    |
| Lin - Light Industry                   | 14 - Matta Museum       |
| MU - Mixed Use                         | 15 - Mines Buffer       |
| PrPro - Primary Production             | 16 - Mines Industry     |
| R - Residential                        | 17 - Residential Kadina |
| RuL - Rural Living                     | 18 - Residential Matta  |
| SU - Special Use                       | 20 - Rural Low Density  |
| TA - Tourist Accommodation             | 21 - Retail Core        |
| TCe - Town Centre                      | 22 - Commercial Area    |
| Tra(Inf) - Transition (Infrastructure) |                         |
| <b>Policy Area</b>                     |                         |
| 13 - Motor Vehicle Showroom            |                         |





# Kadina - Copper Coast

- |  |  |                            |
|--|--|----------------------------|
| <b>P&amp;D Code Zones</b>                        | <b>Productive Economy - Employment</b>       | <b>Resource Extraction</b> |
| <b>Infrastructure &amp; Movement Systems</b>     | Suburban Business and Innovation             | Local government boundary  |
| Community Facilities                             | Employment                                   | Cadastral                  |
| <b>People &amp; Neighbourhoods - Residential</b> | Suburban Employment                          |                            |
| Deferred Urban                                   | Tourism Development                          |                            |
| General Neighbourhood                            | <b>Productive Economy - Mixed Use</b>        |                            |
| Suburban Neighbourhood                           | Township Main Street                         |                            |
| <b>People &amp; Neighbourhoods - Rural</b>       | <b>Productive Economy - Primary Industry</b> |                            |
| Rural Living                                     | Rural  |                            |

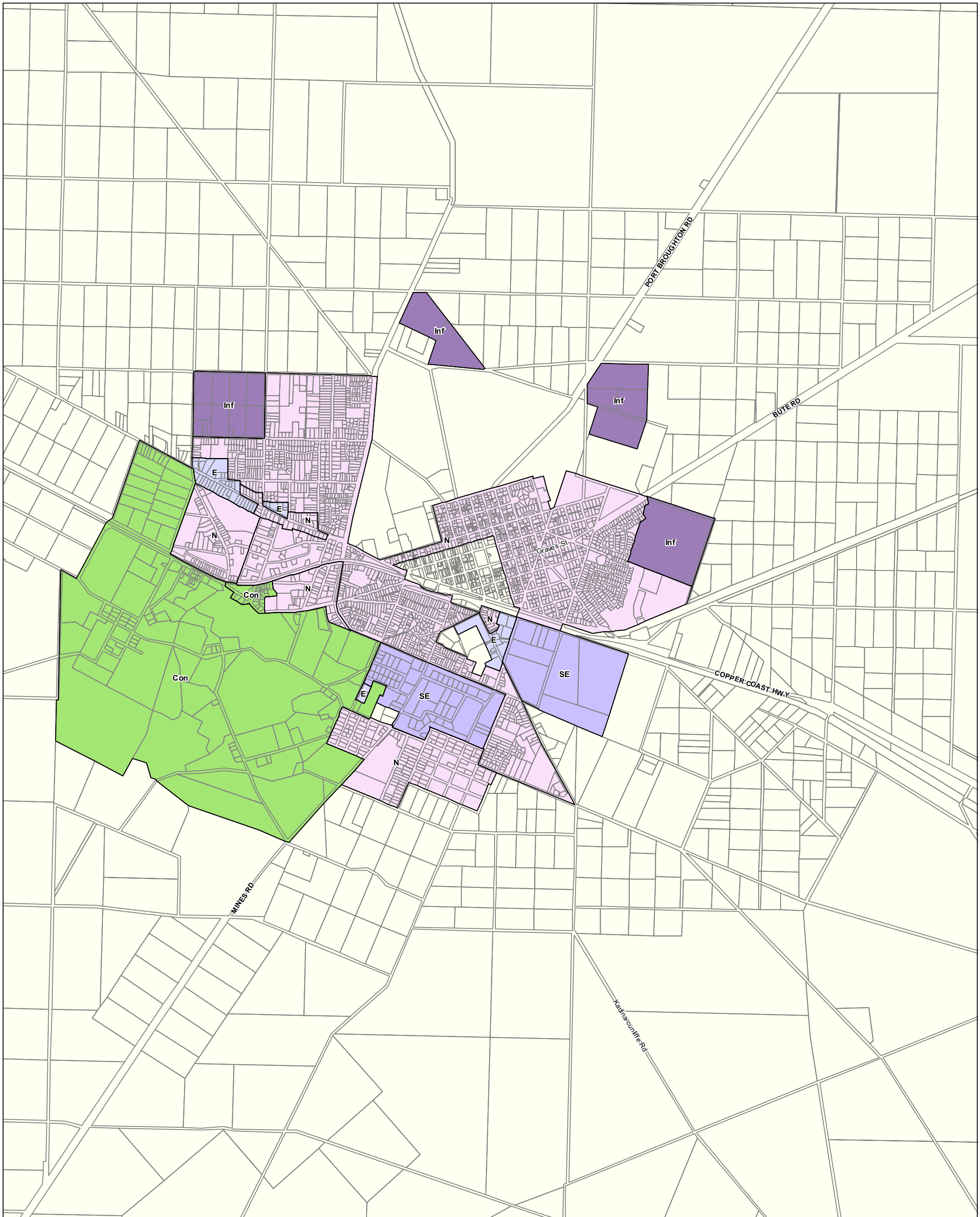
## 2019 Code Consultation Map

0 320 640 960 metres

Map produced - 30 September 2019  
 © Government of South Australia PLN ID: 5813

### P&D Code Zones Abbreviations

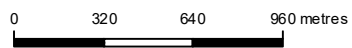
- CF - Community Facilities
- DU - Deferred Urban
- E - Employment
- GN - General Neighbourhood
- RE - Resource Extraction
- Ru - Rural
- RuL - Rural Living
- SBIInv - Suburban Business and Innovation
- SE - Suburban Employment
- SN - Suburban Neighbourhood
- TD - Tourism Development
- TMS - Township Main Street



# P&D Code Zones - Kadina - Copper Coast **DRAFT**

- P&D Code Zones**
- Cadastre
  - People & Neighbourhoods - Residential**
    - Neighbourhood
  - Productive Economy - Employment**
    - Employment
    - Strategic Employment
  - Infrastructure & Movement Systems**
    - Infrastructure
  - Resilient Communities & Environment**
    - Conservation
    - Local government boundary

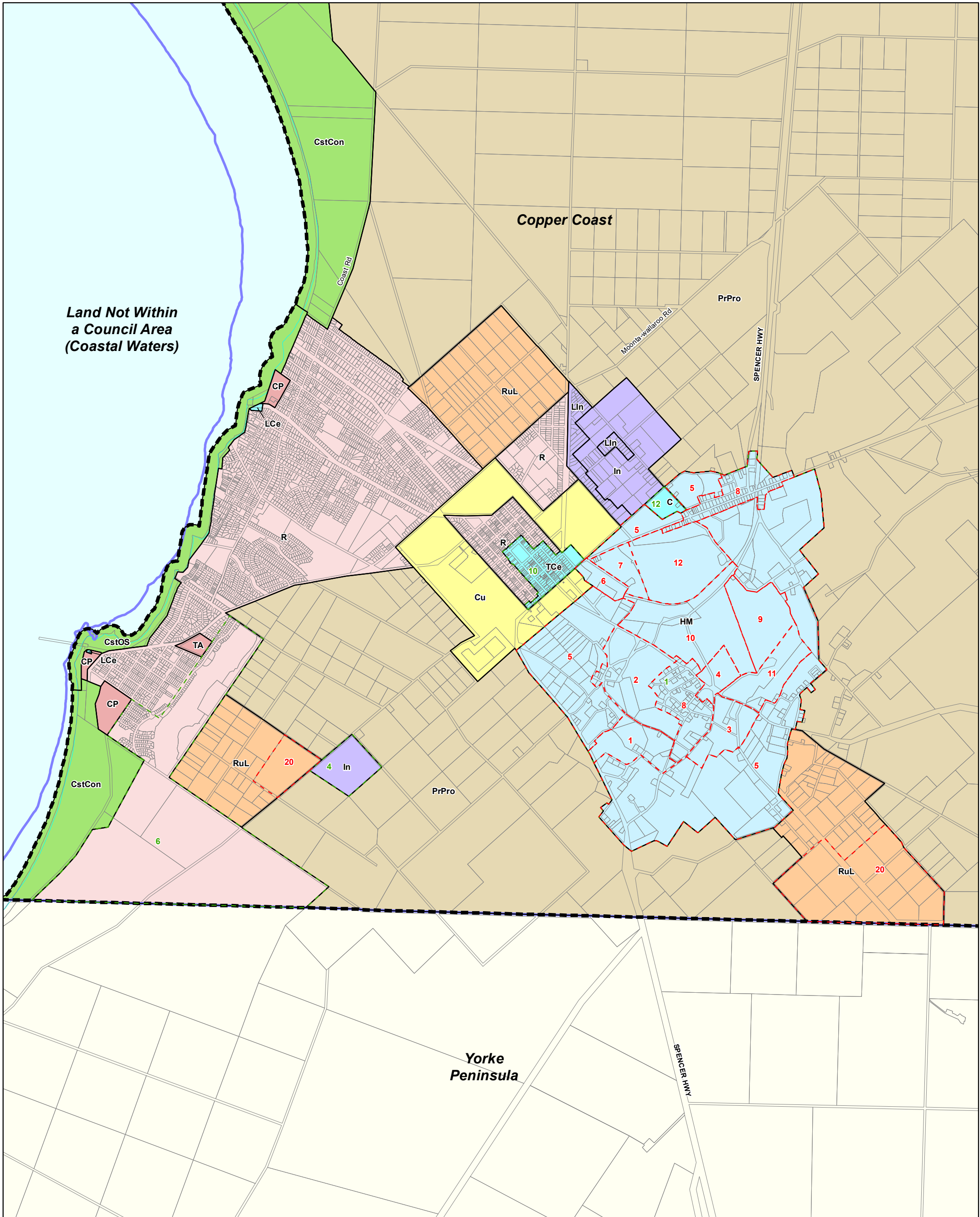
## 2020 Updated Code Consultation Map



Map produced by AGD Planning and Land Use Services. Compiled 4 November 2020  
 © Government of South Australia **PLN ID: 5813**

- P&D Code Zones Abbreviations**
- Con - Conservation
  - E - Employment
  - Inf - Infrastructure
  - N - Neighbourhood
  - SE - Strategic Employment





# Moonta - Copper Coast

- |                             |                           |
|-----------------------------|---------------------------|
| Commercial                  | Rural Living              |
| Community Facilities        | Development Plan          |
| Environmental Constraint    | Zoning                    |
| Heritage                    | Policy Area               |
| Industrial                  | Local government boundary |
| Miscellaneous               | Cadastre                  |
| Primary Production / Mining | Coastline / River Murray  |
| Residential                 |                           |

## Development Plan Map

0 375 750 1125 metres

Map produced - 4 November 2020  
 © Government of South Australia PLN ID: 5464

### Zoning

- C - Commercial
  - CP - Caravan and Tourist Park
  - CstCon - Coastal Conservation
  - CstOS - Coastal Open Space
  - Cu - Community
  - HM - Historic Mining
  - In - Industry
  - LCe - Local Centre
  - LIn - Light Industry
  - PrPro - Primary Production
  - R - Residential
  - RuL - Rural Living
  - TA - Tourist Accommodation
  - TCe - Town Centre
- Policy Area**
- 1 - Moonta Mines

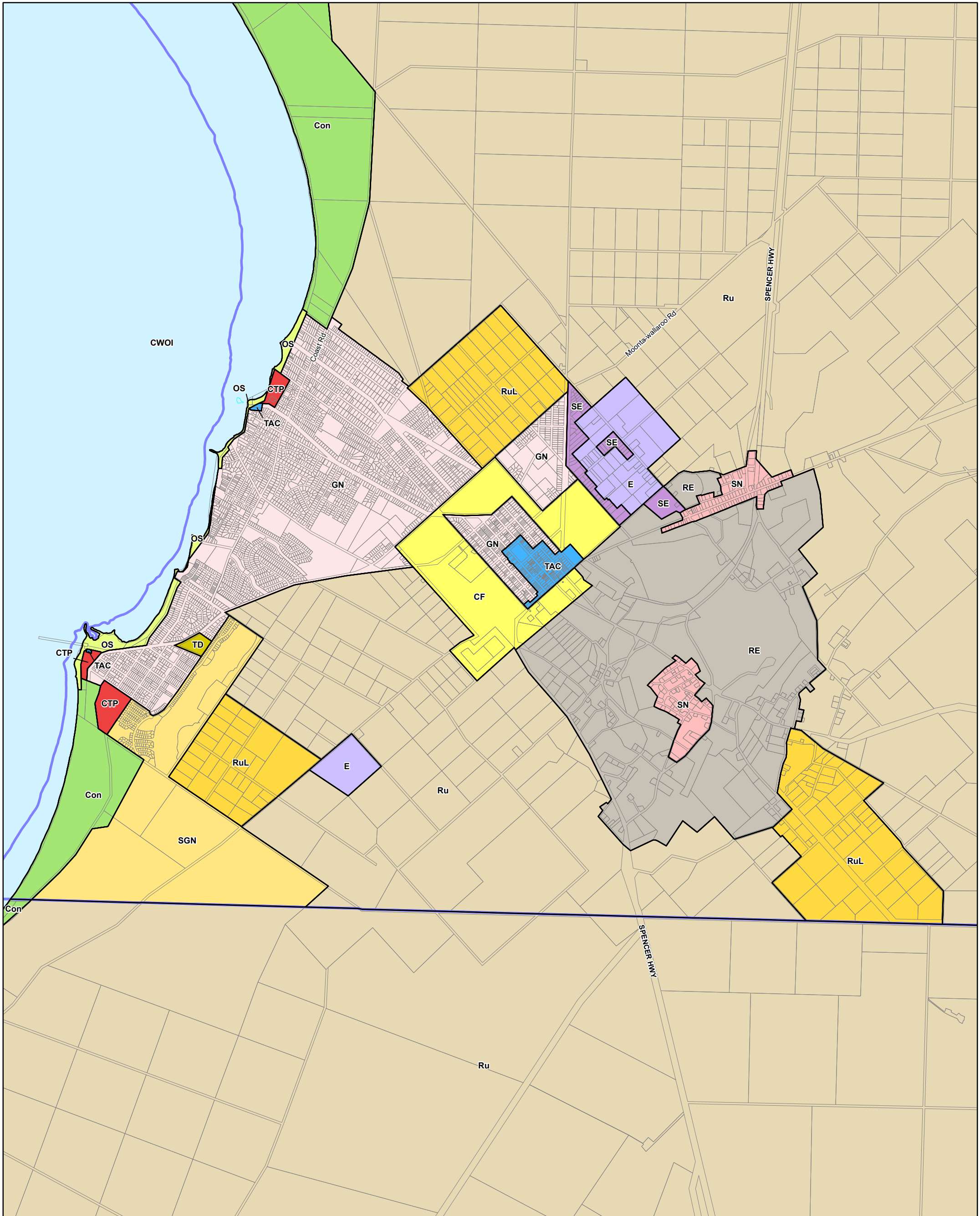
- 10 - Moonta
- 12 - Bulky Goods
- 4 - Infrastructure
- 6 - Golf Course

### Precinct

- 1 - Hamley
- 10 - Ryans
- 11 - Taylors
- 12 - Yelta Slimes
- 2 - Hancocks
- 20 - Rural Low Density
- 3 - Hughes
- 4 - Mine Management
- 5 - Moonta Mines Buffer
- 6 - Moonta Station
- 7 - Precipitation Works
- 8 - Residential - Moonta Mines and North Yelta

9 - Richmans





# Moonta - Copper Coast

- |  |  |  |
|--|--|--|
| <b>P&amp;D Code Zones</b>                        | <b>Productive Economy - Employment</b>       | <b>Resilient Communities &amp; Environment</b> |
| <b>Infrastructure &amp; Movement Systems</b>     | Township Activity Centre                     | Conservation                                   |
| Community Facilities                             | Employment                                   | Open Space                                     |
| <b>People &amp; Neighbourhoods - Residential</b> | Suburban Employment                          | Coastal Waters and Offshore Islands            |
| Caravan and Tourist Park                         | Tourism Development                          | Local government boundary                      |
| General Neighbourhood                            | <b>Productive Economy - Primary Industry</b> | Cadastre                                       |
| Suburban Greenfield Neighbourhood                | Rural  | Coastline HWM                                  |
| Suburban Neighbourhood                           | Resource Extraction                          |  |
| <b>People &amp; Neighbourhoods - Rural</b>       |  |  |
| Rural Living                                     |  |  |

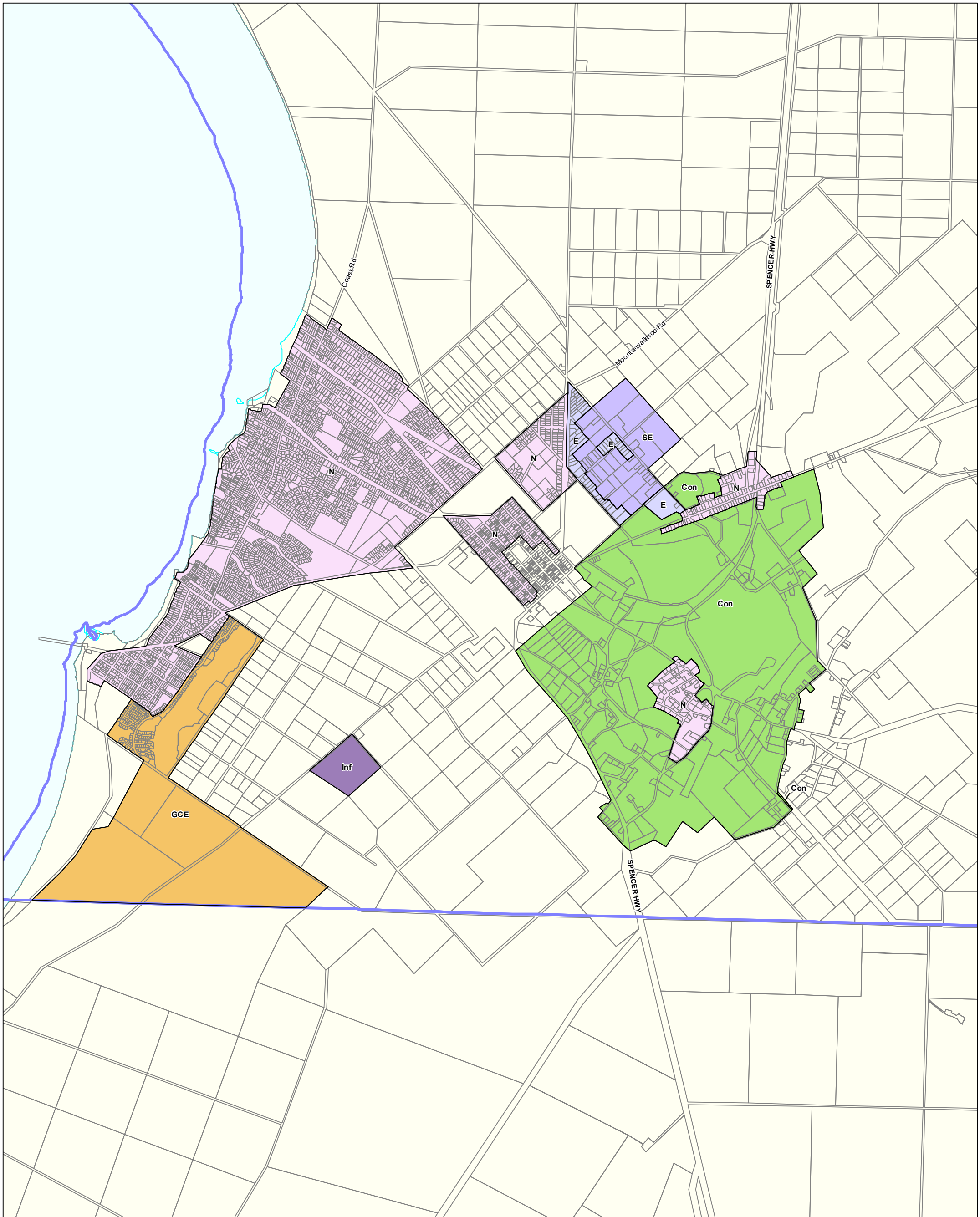
## 2019 Code Consultation Map

0 375 750 1125 metres

Map produced - 30 September 2019  
 © Government of South Australia PLN ID: 5813

- P&D Code Zones Abbreviations**
- CF - Community Facilities
  - CTP - Caravan and Tourist Park
  - CWOI - Coastal Waters and Offshore Islands
  - Con - Conservation
  - E - Employment
  - GN - General Neighbourhood
  - OS - Open Space
  - RE - Resource Extraction
  - Ru - Rural
  - RuL - Rural Living
  - SE - Suburban Employment
  - SGN - Suburban Greenfield Neighbourhood
  - SN - Suburban Neighbourhood
  - TAC - Township Activity Centre
  - TD - Tourism Development





# P&D Code Zones - Moonta - Copper Coast **DRAFT**

- P&D Code Zones**
- ▬ Local government boundary
  - Cadastre
  - ▬ Coastline HWM
- People & Neighbourhoods - Residential**
- Golf Course Estate
  - Neighbourhood
- Productive Economy - Employment**
- Employment
  - Strategic Employment
- Infrastructure & Movement Systems**
- Infrastructure
- Resilient Communities & Environment**
- Conservation

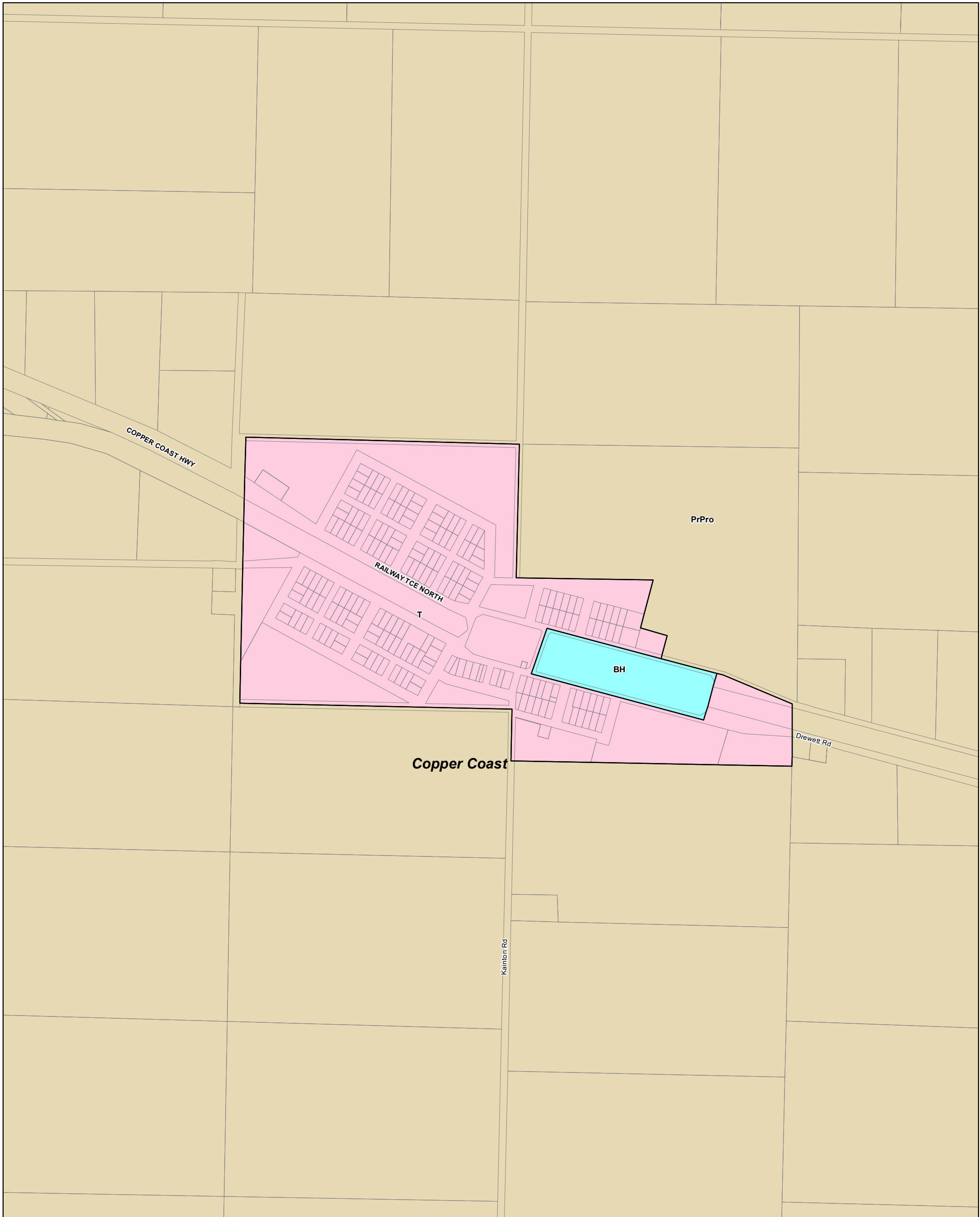
## 2020 Updated Code Consultation Map

0 375 750 1125 metres

Map produced by AGD Planning and Land Use Services. Compiled 4 November 2020  
 © Government of South Australia **PLN ID: 5813**

- P&D Code Zones Abbreviations**
- Con - Conservation
  - E - Employment
  - GCE - Golf Course Estate
  - Inf - Infrastructure
  - N - Neighbourhood
  - SE - Strategic Employment





# Paskeville - Copper Coast

## Development Plan Map

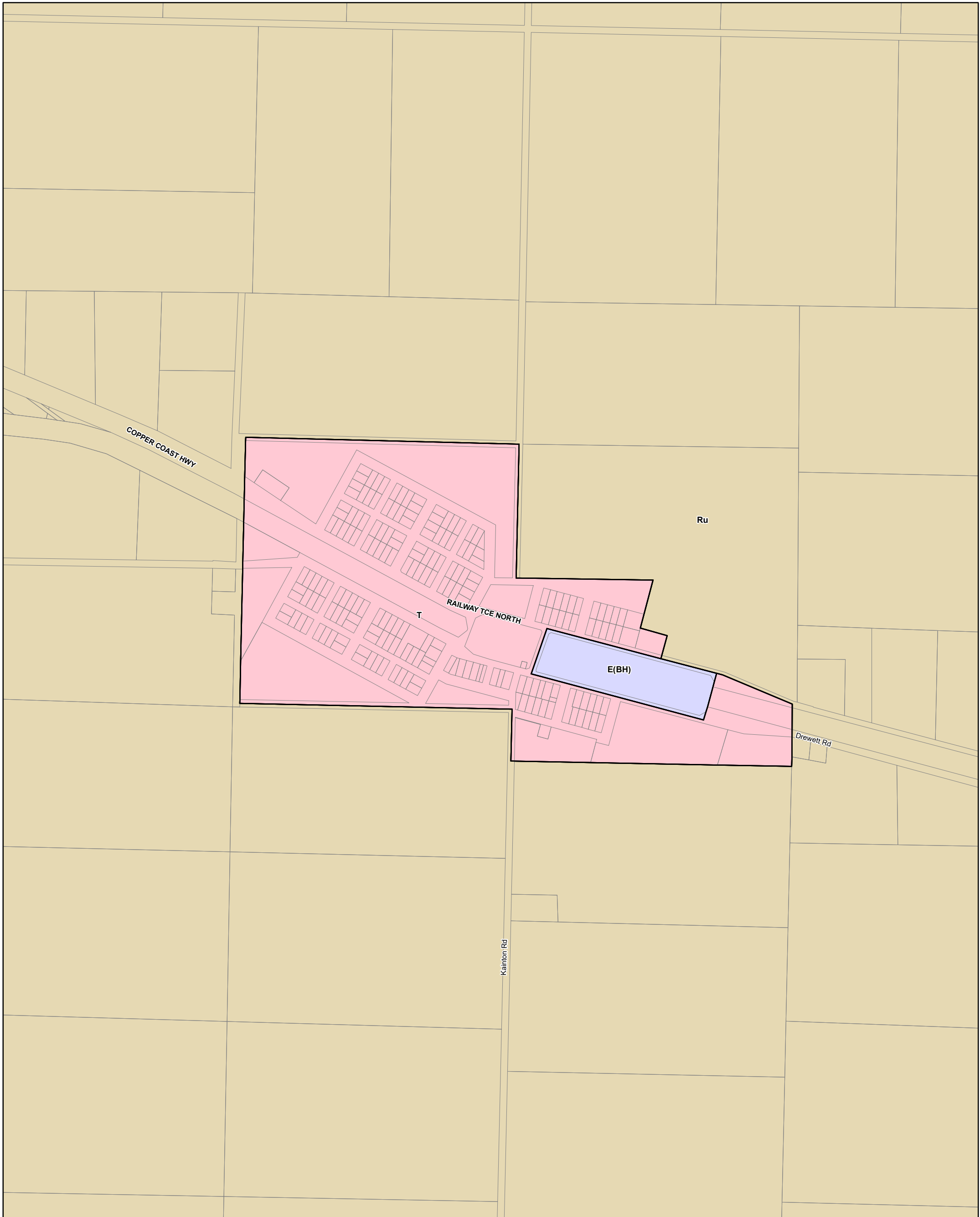
- Commercial
- Country Township
- Primary Production / Mining
- Development Plan
- Zoning
- Local government boundary
- Cadastre

- Zoning**
- BH - Bulk Handling
  - PrPro - Primary Production
  - T - Township

0 120 240 360 metres

Map produced - 4 November 2020  
 © Government of South Australia PLN ID: 5464





# Paskeville - Copper Coast

- P&D Code Zones**
- People & Neighbourhoods - Residential**
  - Township
  - Productive Economy - Employment**
  - Employment (Bulk Handling)
  - Productive Economy - Primary Industry**
  - Rural
  - Local government boundary
  - Cadastre

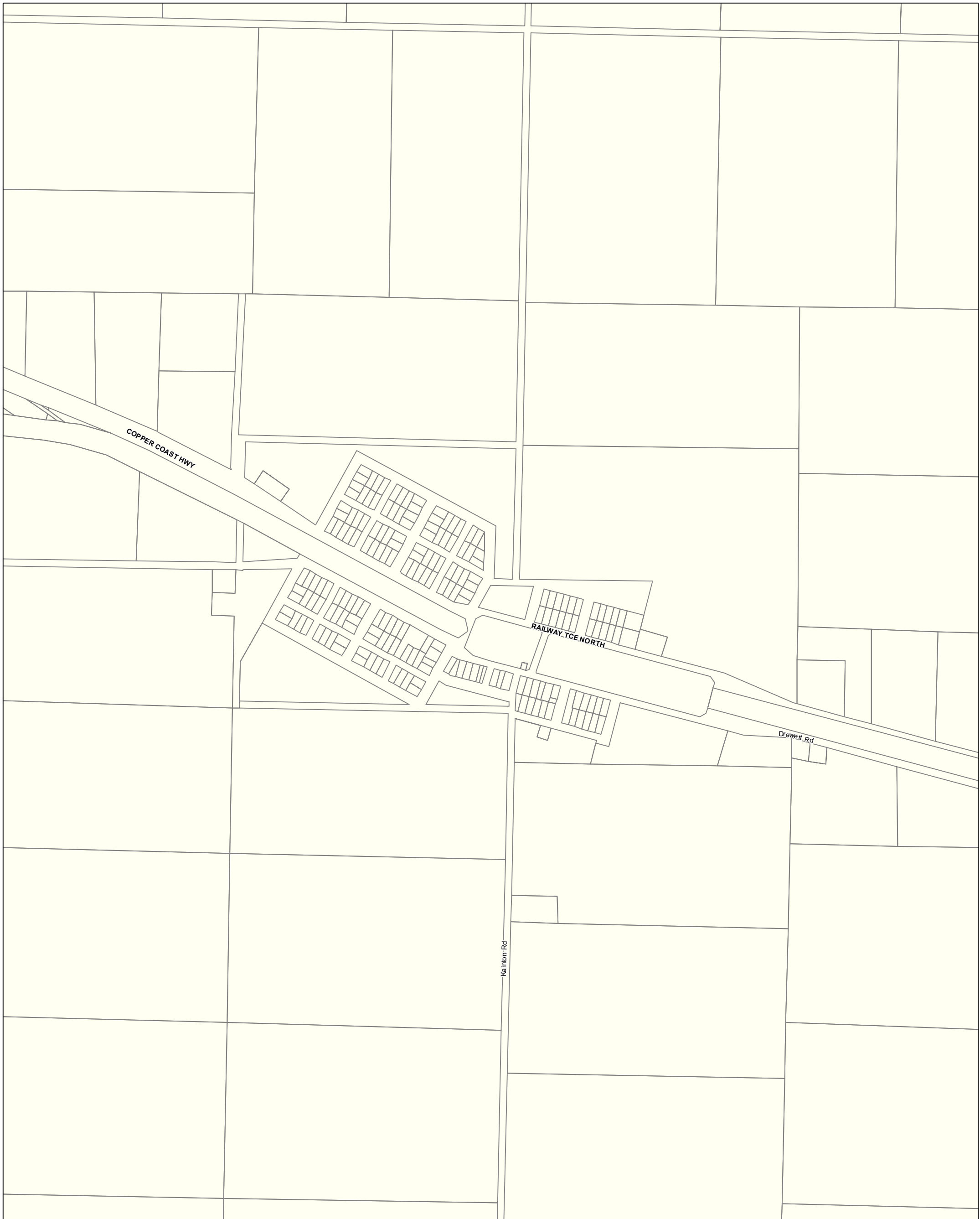
## 2019 Code Consultation Map

**P&D Code Zones Abbreviations**  
 E(BH) - Employment (Bulk Handling)  
 Ru - Rural  
 T - Township



0 120 240 360 metres

Map produced - **30 September 2019**  
 © Government of South Australia **PLN ID: 5813**





**P&D Code Zones - Paskeville - Copper Coast DRAFT**

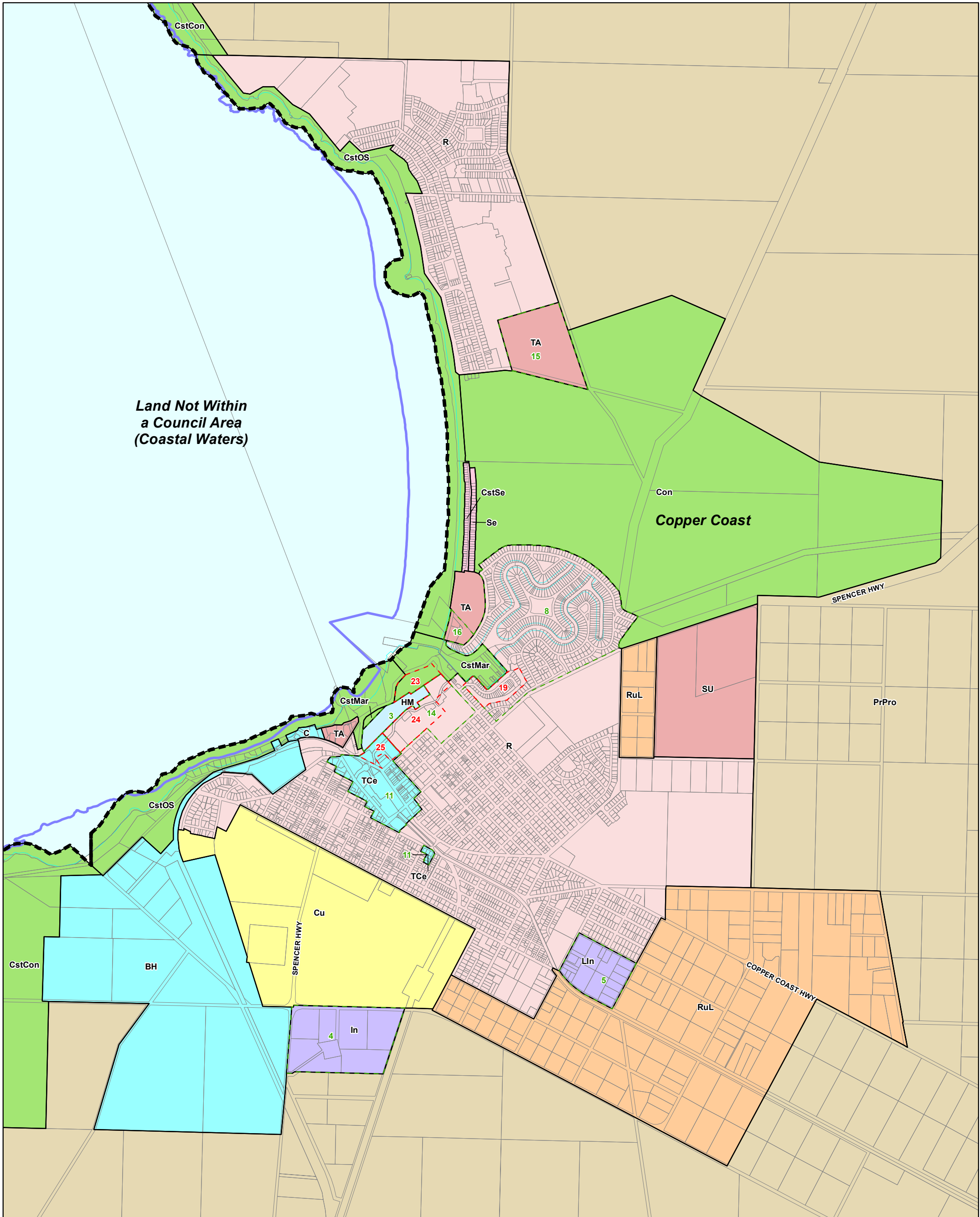
-  Local government boundary
-  Cadastre

**2020 Updated Code Consultation Map**

0 110 220 330 metres

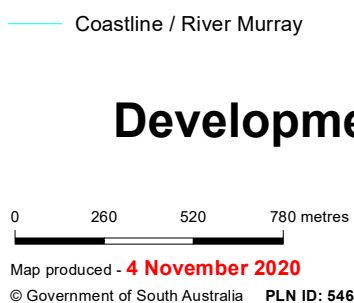
Map produced by AGD Planning and  
Land Use Services. Compiled 4 November 2020  
© Government of South Australia **PLN ID: 5813**





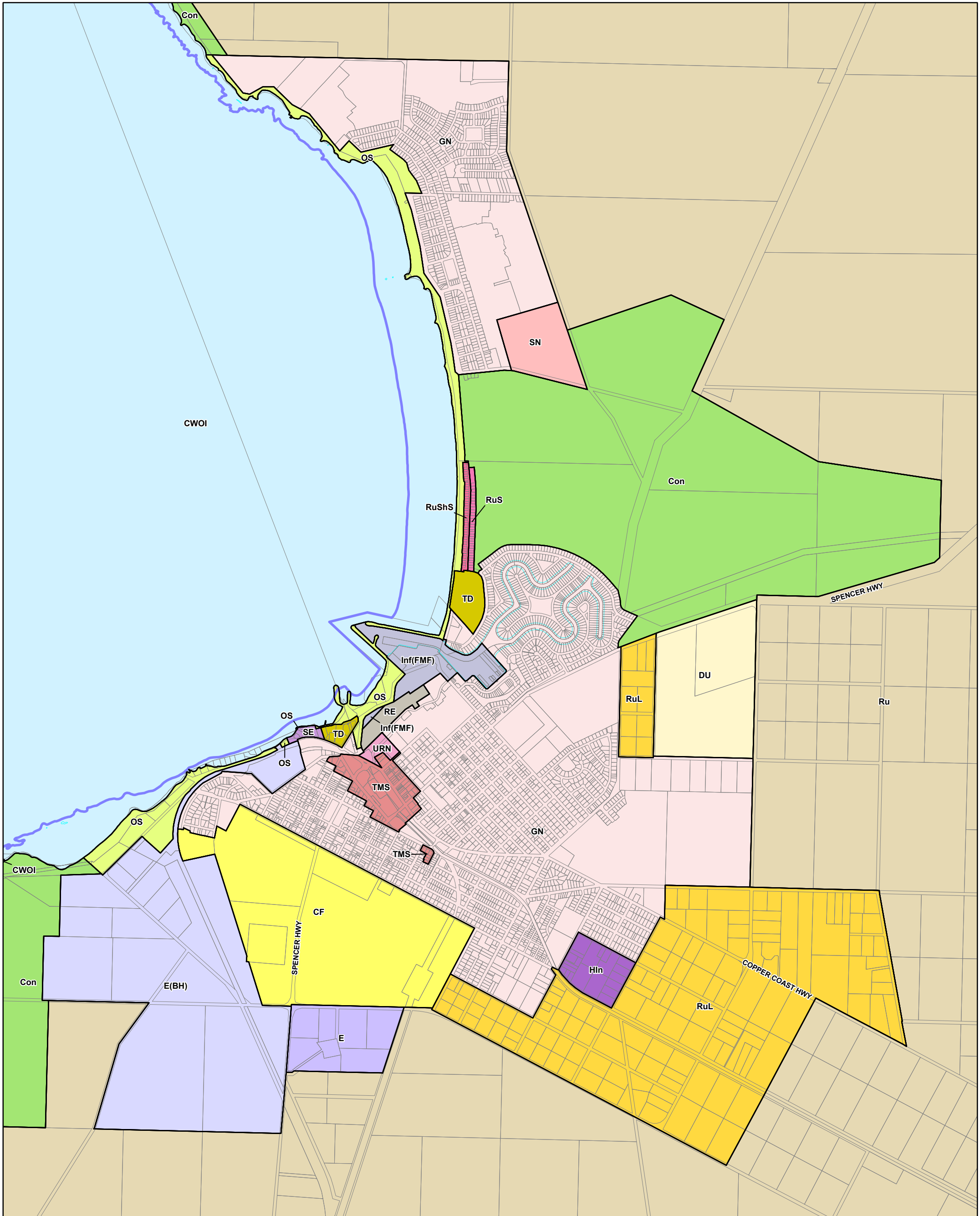
# Wallaroo - Copper Coast

- |                             |                           |
|-----------------------------|---------------------------|
| Commercial                  | Residential               |
| Community Facilities        | Rural Living              |
| Country Township            | Development Plan          |
| Environmental Constraint    | Zoning                    |
| Heritage                    | Policy Area               |
| Industrial                  | Local government boundary |
| Miscellaneous               | Cadastre                  |
| Primary Production / Mining |                           |



- |                               |                                     |
|-------------------------------|-------------------------------------|
| <b>Zoning</b>                 | <b>TCe - Town Centre</b>            |
| BH - Bulk Handling            | <b>Policy Area</b>                  |
| C - Commercial                | 11 - Wallaroo Shores                |
| Con - Conservation            | 14 - Wallaroo Shores                |
| CstCon - Coastal Conservation | 15 - North Beach                    |
| CstMar - Coastal Marina       | 16 - Pamir Court                    |
| CstOS - Coastal Open Space    | 3 - Wallaroo Town                   |
| CstSe - Coastal Settlement    | 4 - Infrastructure                  |
| Cu - Community                | 5 - Home Industry                   |
| HM - Historic Mining          | 8 - Wallaroo Marina                 |
| In - Industry                 | <b>Precinct</b>                     |
| Lin - Light Industry          | 19 - Marina                         |
| PrPro - Primary Production    | 23 - Marina Tourist Accommodation   |
| R - Residential               | 24 - Wallaroo Shores Medium Density |
| RuL - Rural Living            | 25 - Mixed Use                      |
| SU - Special Use              |                                     |
| Se - Settlement               |                                     |
| TA - Tourist Accommodation    |                                     |





# Wallaroo - Copper Coast

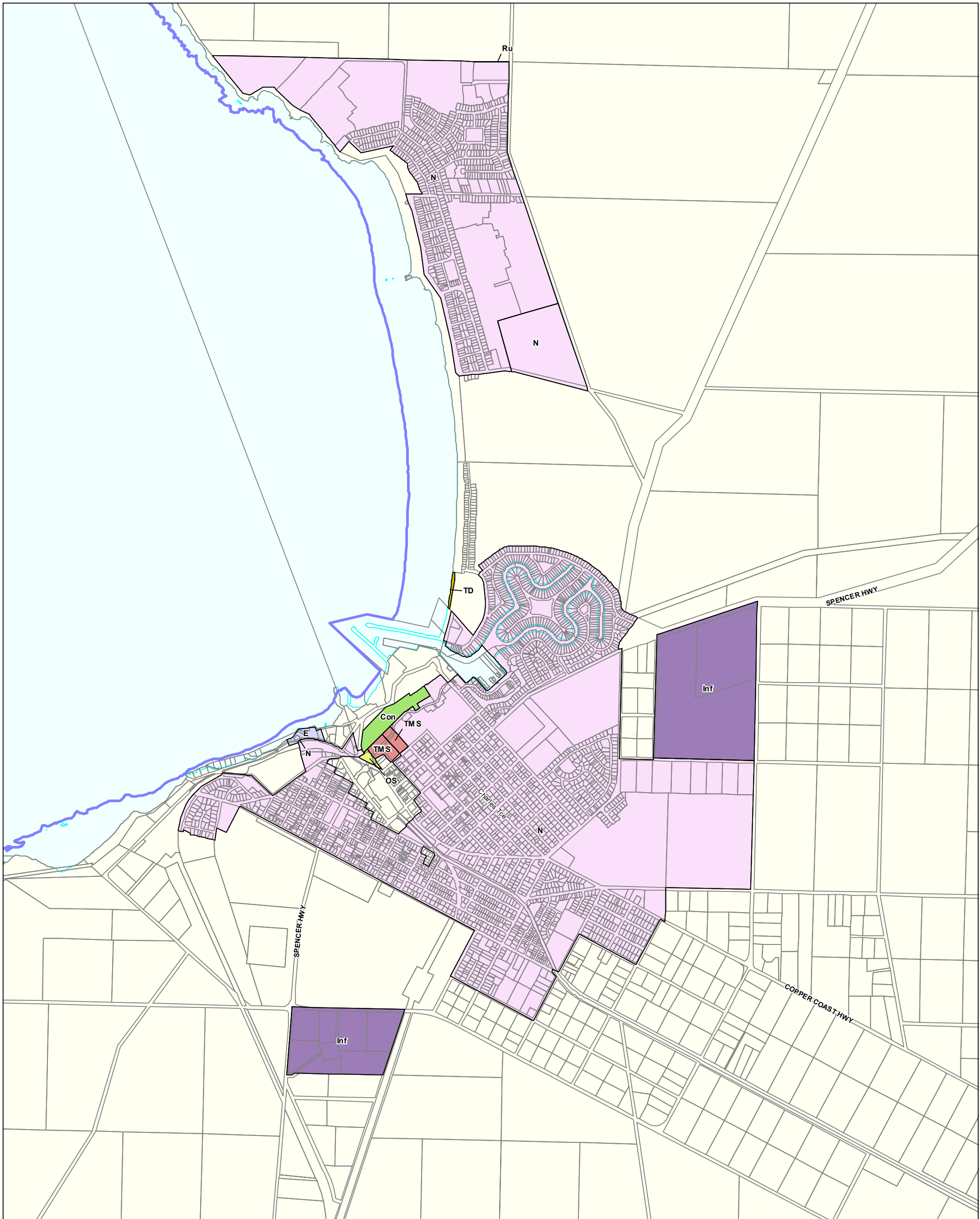
# 2019 Code Consultation Map

- P&D Code Zones**
- Infrastructure & Movement Systems**
    - Infrastructure (Ferry and Marina Facilities)
    - Community Facilities
  - People & Neighbourhoods - Residential**
    - Deferred Urban
    - General Neighbourhood
    - Rural Settlement
    - Rural Shack Settlement
  - People & Neighbourhoods - Rural**
    - Rural Living
  - Productive Economy - Employment**
    - Employment
    - Employment (Bulk Handling)
    - Home Industry
    - Suburban Employment
  - Productive Economy - Mixed Use**
    - Township Main Street
  - Productive Economy - Primary Industry**
    - Rural
    - Resource Extraction
  - Resilient Communities & Environment**
    - Conservation
    - Open Space
  - Productive Economy - Tourism Development**
    - Tourism Development

- Suburban Neighbourhood
  - Urban Renewal Neighbourhood
  - Tourism Development
  - Township Main Street
  - Rural
  - Resource Extraction
  - Conservation
  - Open Space
  - Coastal Waters and Offshore Islands
  - Local government boundary
  - Cadastre
  - Coastline HWM
- 0 260 520 780 metres
- Map produced - **30 September 2019**  
© Government of South Australia **PLN ID: 5813**

- P&D Code Zones Abbreviations**
- CF - Community Facilities
  - CWOI - Coastal Waters and Offshore Islands
  - Con - Conservation
  - DU - Deferred Urban
  - E - Employment
  - E(BH) - Employment (Bulk Handling)
  - GN - General Neighbourhood
  - HIn - Home Industry
  - Inf(FMF) - Infrastructure (Ferry and Marina Facilities)
  - OS - Open Space
  - RE - Resource Extraction
  - Ru - Rural
  - RuL - Rural Living
  - RuS - Rural Settlement
  - RuShS - Rural Shack Settlement
  - SE - Suburban Employment
  - SN - Suburban Neighbourhood
  - TD - Tourism Development
  - TMS - Township Main Street
  - URN - Urban Renewal Neighbourhood





# P&D Code Zones - Wallaroo - Copper Coast **DRAFT**

- |  |  |
|--|--|
| <b>P&amp;D Code Zones</b>                        | <b>Productive Economy - Primary Industry</b>   |
| <b>People &amp; Neighbourhoods - Residential</b> | Rural  |
| Neighbourhood                                    | <b>Resilient Communities &amp; Environment</b> |
| <b>Productive Economy - Employment</b>           | Conservation                                   |
| Employment                                       | Open Space                                     |
| Tourism Development                              | Local government boundary                      |
| <b>Productive Economy - Mixed Use</b>            | Cadastral                                      |
| Township Main Street                             | Coastline HWM                                  |
| <b>Infrastructure &amp; Movement Systems</b>     |  |
| Infrastructure                                   |  |

## 2020 Updated Code Consultation Map

0 260 520 780 metres

Map produced by AGD Planning and Land Use Services. Compiled 4 November 2020  
 © Government of South Australia **PLN ID: 5813**

- P&D Code Zones Abbreviations**
- Con - Conservation
  - E - Employment
  - Inf - Infrastructure
  - N - Neighbourhood
  - OS - Open Space
  - Ru - Rural
  - TD - Tourism Development
  - TMS - Township Main Street