

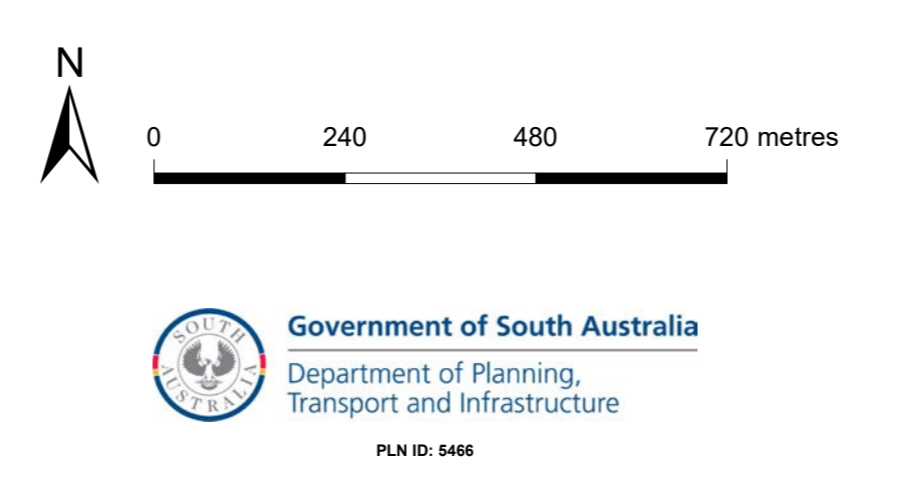
Mount Gambier Development Plan Map

- Commercial
- Community Facilities
- Industrial
- Miscellaneous
- Recreation
- Residential
- Rural Living
- Development Plan
- Zoning
- Policy Area
- Local government boundary
- Cadastre

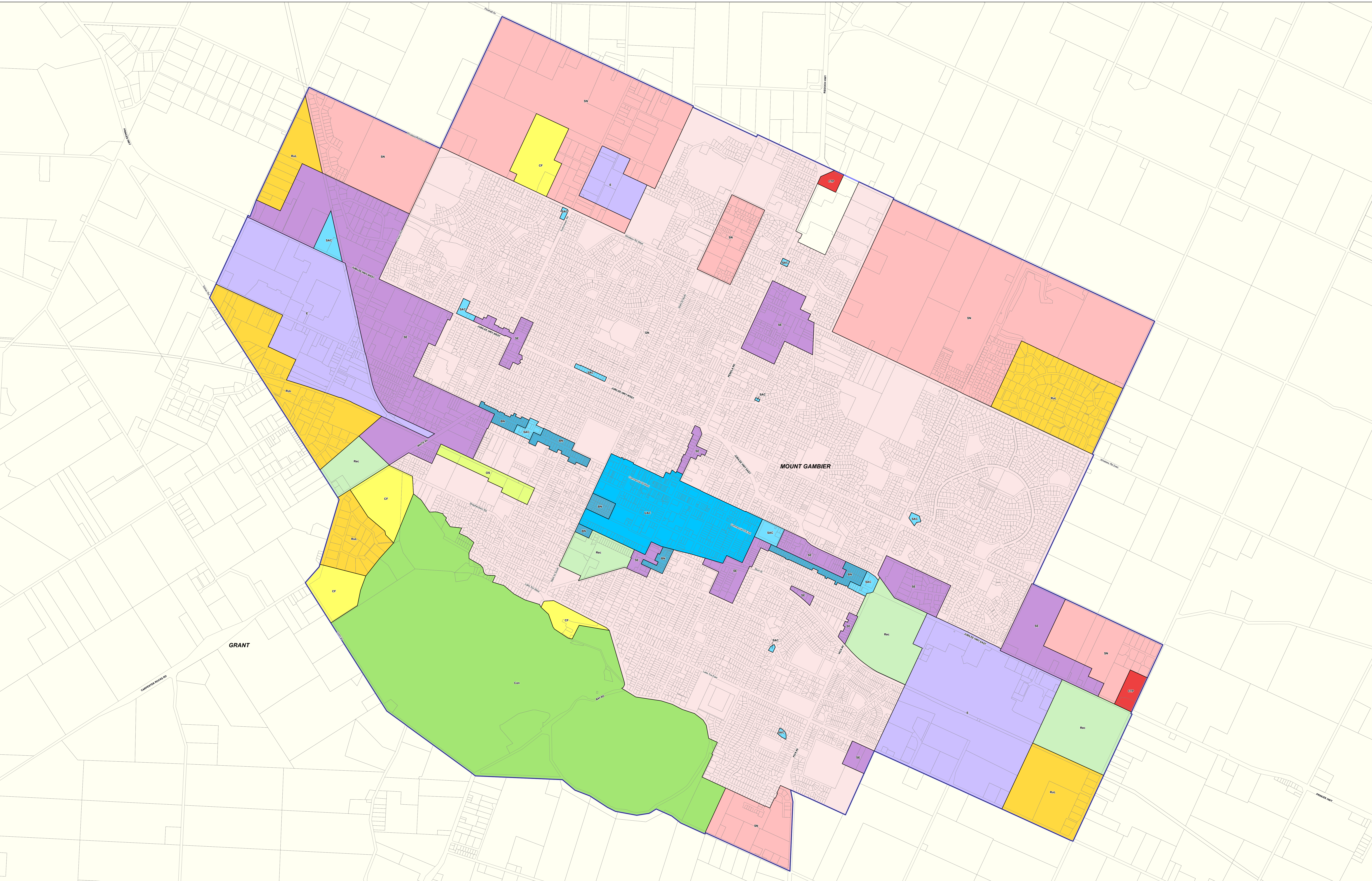
Produced by Department of Planning, Transport and Infrastructure
 Planning Division
 GPO Box 1815 Adelaide SA 5001
 www.ssa.gov.au
 Lambert Conformal Conic
 9 June 2020

Projection
 Completed

© Government of South Australia 2017
 No part of this document may be reproduced, stored in a retrieval system, or transmitted in any form, or by any means, without the prior written permission of the publisher, Department of Planning, Transport and Infrastructure.
 While every reasonable effort has been made to ensure that this document is correct at the time of publication, the State of South Australia and its agencies, representatives, employees and contractors disclaim any and all liability to any person in respect to anything or the consequences of anything done or omitted to be done in reliance upon the whole or any part of this document.



- Zoning**
- BU - Bulky Goods
- C - Commercial
- CI - Commens/Industry
- CC - City Centre
- CL - Country Living
- CP - Caravan and Tourist Park
- CU - Community
- DCE - District Centre
- GI - General Industry
- I - Industry
- IN(E) - Industry (Enterprise)
- INT(M) - Industry (Former Mill)
- L - Lakes
- LCA - Local Centre
- LI - Light Industry
- MU - Mixed Use
- NCA - Neighbourhood Centre
- PP(E) - Public Purposes (Education)
- PP(PT) - Public Purposes (Rail Transport)
- PP(SG) - Public Purposes (Show Grounds)
- PPro - Primary Production
- R - Residential
- RReg - Residential Regeneration
- REC - Recreation
- RuL - Rural Living
- Policy Area
- 1 - Cave Coasters and Environs State Heritage Area
- 2 - Lakes Precinct
- 3 - Atamunga Golf Course
- 4 - Kersley Avenue Growth Area
- 5 - Low Density
- 6 - McCormick Road
- 7 - Northern Residential
- 8 - Sutorown Road



Mount Gambier

P&D Code Zones - DRAFT

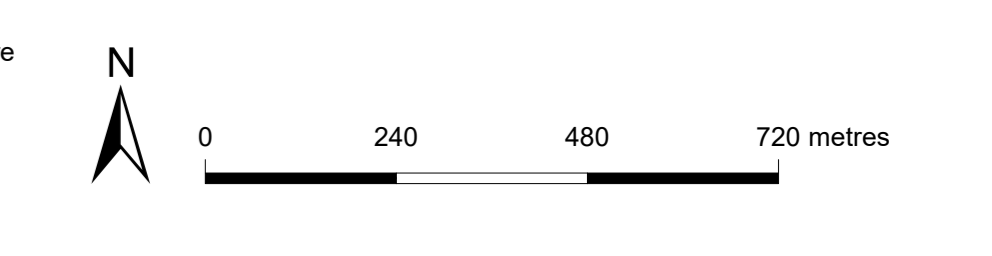
- | | | |
|--|--|--|
| P&D Code Zones | People & Neighbourhoods - Rural | Resilient Communities & Environment |
| Infrastructure & Movement Systems | Productive Economy - Employment | Conservation |
| People & Neighbourhoods - Residential | Suburban Activity Centre | Open Space |
| Community Facilities | Business Neighbourhood | Recreation |
| Caravan and Tourist Park | Urban Activity Centre | Local government boundary |
| General Neighbourhood | Employment | Cadastre |
| Suburban Neighbourhood | Suburban Employment | |

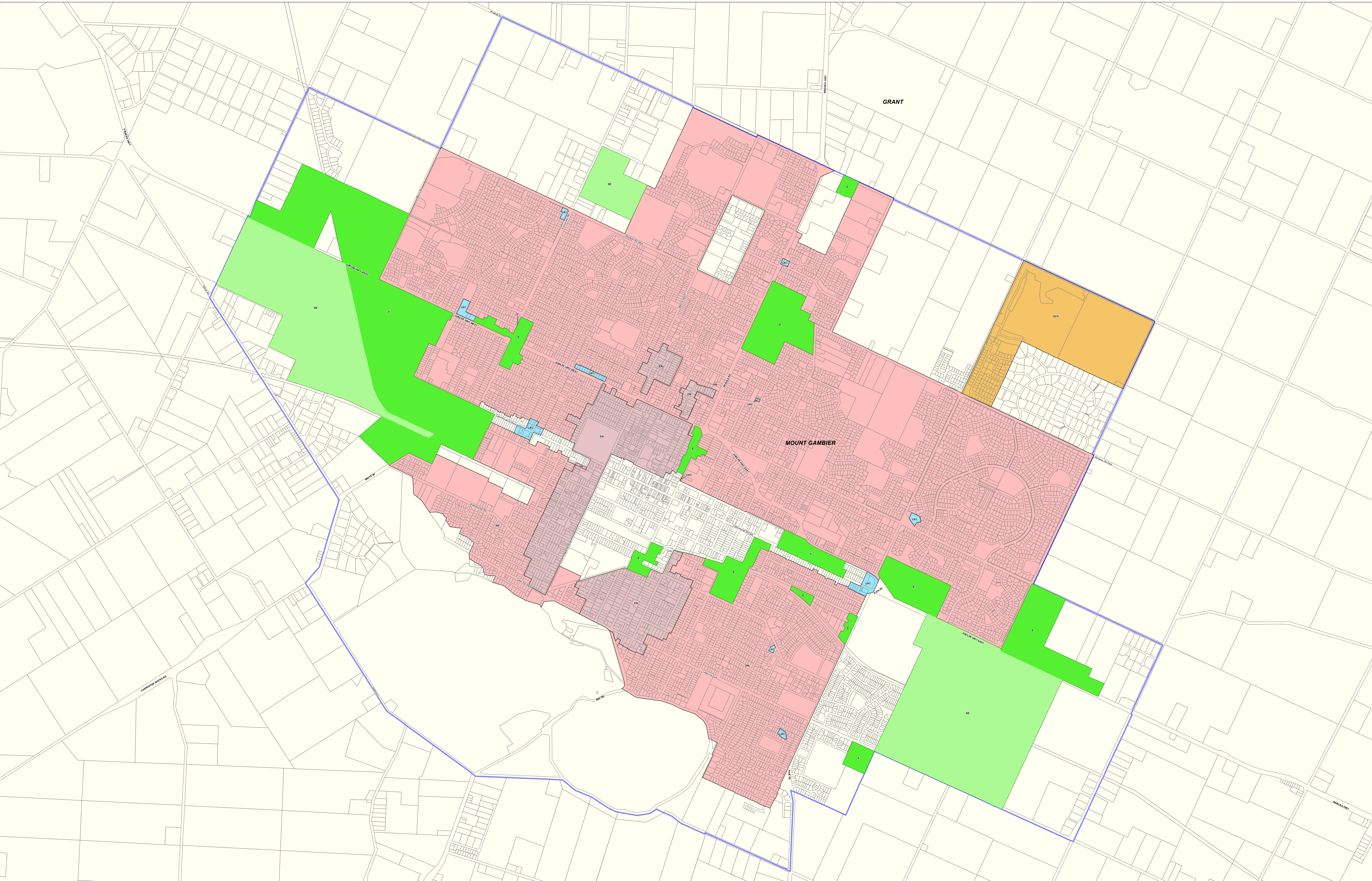
2019 Code Consultation Map

- P&D Code Zones Abbreviations**
- BN - Business Neighbourhood
 - CF - Community Facilities
 - CTP - Caravan and Tourist Park
 - Com - Conservation
 - E - Employment
 - GN - General Neighbourhood
 - OS - Open Space
 - RuL - Rural Living
 - SAC - Suburban Activity Centre
 - SE - Suburban Employment
 - SN - Suburban Neighbourhood
 - UAC - Urban Activity Centre

Produced by Department of Planning, Transport and Infrastructure
 Planning and Land Use Services
 GPO Box 1815 Adelaide SA 5001
 www.sa.gov.au
 Lambert Conformal Conic
 30 September 2019

Projection
 Completed
 No part of this document may be reproduced, stored in a retrieval system, or transmitted in any form or by any means, without the prior written permission of the publisher.
 Department of Planning, Transport and Infrastructure
 While every reasonable effort has been made to ensure that this document is correct at the time of publication, the State of South Australia and its agencies, institutions, employees and contractors disclaim any and all liability to any person in respect to anything or the consequence of anything done or omitted to be done in reliance upon the whole or any part of this document.





Mount Gambier

P&D Code Zones - DRAFT

- Local Activity Centre
- Urban Activity Centre
- Local Economy - Employment
- Established Neighbourhood
- Suburban Neighbourhood
- Golf Course Estate
- People & Neighbourhoods - Residential
- P&D Code Zones
- Local government boundary
- Cadastre
- Employment
- Strategic Employment

2020 Updated Code Consultation Map

Produced by Attorney-General's Department
 Planning and Land Use Services
 GPO Box 1815 Adelaide SA 5001
 www.sa.gov.au
 Lambert Conformal Conic
 4 November 2020

Projection
 Completed

© Government of South Australia 2020
 No part of this document may be reproduced, stored in a retrieval system, or transmitted in any form, or by any means, without the prior written permission of the publisher, the Attorney-General's Department.

While every reasonable effort has been made to ensure that this document is correct at the time of publication, the State of South Australia and its agencies, institutions, officers, employees and contractors disclaim any and all liability to any person in respect to existing or the consequences of any thing done or omitted to be done in reliance upon the whole or any part of this document.

N

0 240 480 720 metres

Government of South Australia
 Attorney-General's Department
 PLAN ID: 1812

Current Development Plan Zone	Current Development Plan Policy Area	Current Development Plan Precinct	Consultation November 2019 Code Proposal	Consultation November 2020 Code Proposal	Planning & Design Code Subzone
Bulky Goods			Suburban Employment	Employment	
Caravan and Tourist Park			Caravan and Tourist Park	Caravan and Tourist Park	
City Centre			Urban Activity Centre	Urban Activity Centre	
City Centre	Cave Gardens and Environs State Heritage Area		Urban Activity Centre	Urban Activity Centre	
Commerce/Industry			Suburban Employment	Employment	
Commercial			Suburban Employment	Employment	
Community			Community Facilities	Community Facilities	
Community	Lakes Perimeter		Community Facilities	Community Facilities	
Country Living			Rural Living	Rural Living	
District Centre			Suburban Activity Centre	Suburban Activity Centre	
General Industry			Employment	Strategic Employment	
Industry (Enterprise)			Suburban Employment	Employment	
Industry (Timber Mill)			Employment	Strategic Employment	
Lakes			Conservation	Conservation	
Light Industry			Suburban Employment	Employment	
Local Centre			Suburban Activity Centre	Local Activity Centre	
Mixed Use			Business Neighbourhood	Business Neighbourhood	
Neighbourhood Centre			Suburban Activity Centre	Suburban Activity Centre	
Public Purposes (Education)			Community Facilities	Community Facilities	
Public Purposes (Rail Transport)			Open Space	Open Space	
Public Purposes (Show Grounds)			Recreation	Recreation	
Recreation			Recreation	Recreation	
Residential			General Neighbourhood	Zone Spilt Suburban Neighbourhood	

Current Development Plan Zone	Current Development Plan Policy Area	Current Development Plan Precinct	Consultation November 2019 Code Proposal	Consultation November 2020 Code Proposal	Planning & Design Code Subzone
				Established Neighbourhood	
Residential	Attamurra Golf Course		Suburban Neighbourhood	Golf Course Estate	
Residential	Kennedy Avenue Growth Area		Suburban Neighbourhood	Suburban Neighbourhood	
Residential	Low Density		Suburban Neighbourhood	Suburban Neighbourhood	
Residential	McCormick Road		Suburban Neighbourhood	Suburban Neighbourhood	
Residential	Northern Residential		Suburban Neighbourhood	Suburban Neighbourhood	
Residential	Suttontown Road		Suburban Neighbourhood	Suburban Neighbourhood	
Residential Regeneration			General Neighbourhood	General Neighbourhood	
Rural Living			Rural Living	Rural Living	