

West Torrens

- Commercial
- Residential
- Industrial
- Open Space
- Recreation
- Environmental Constraint
- Community Facilities
- Development Plan
- Zoning
- Policy Area
- Precinct
- Local government boundary
- Cadastre
- Coastline / River Murray

Produced by Department of Planning, Transport and Infrastructure
 Planning Division
 GPO Box 1815 Adelaide SA 5001
 www.sa.gov.au
 Lambert Conformal Conic
 Projection
 Compiled 9 June 2020

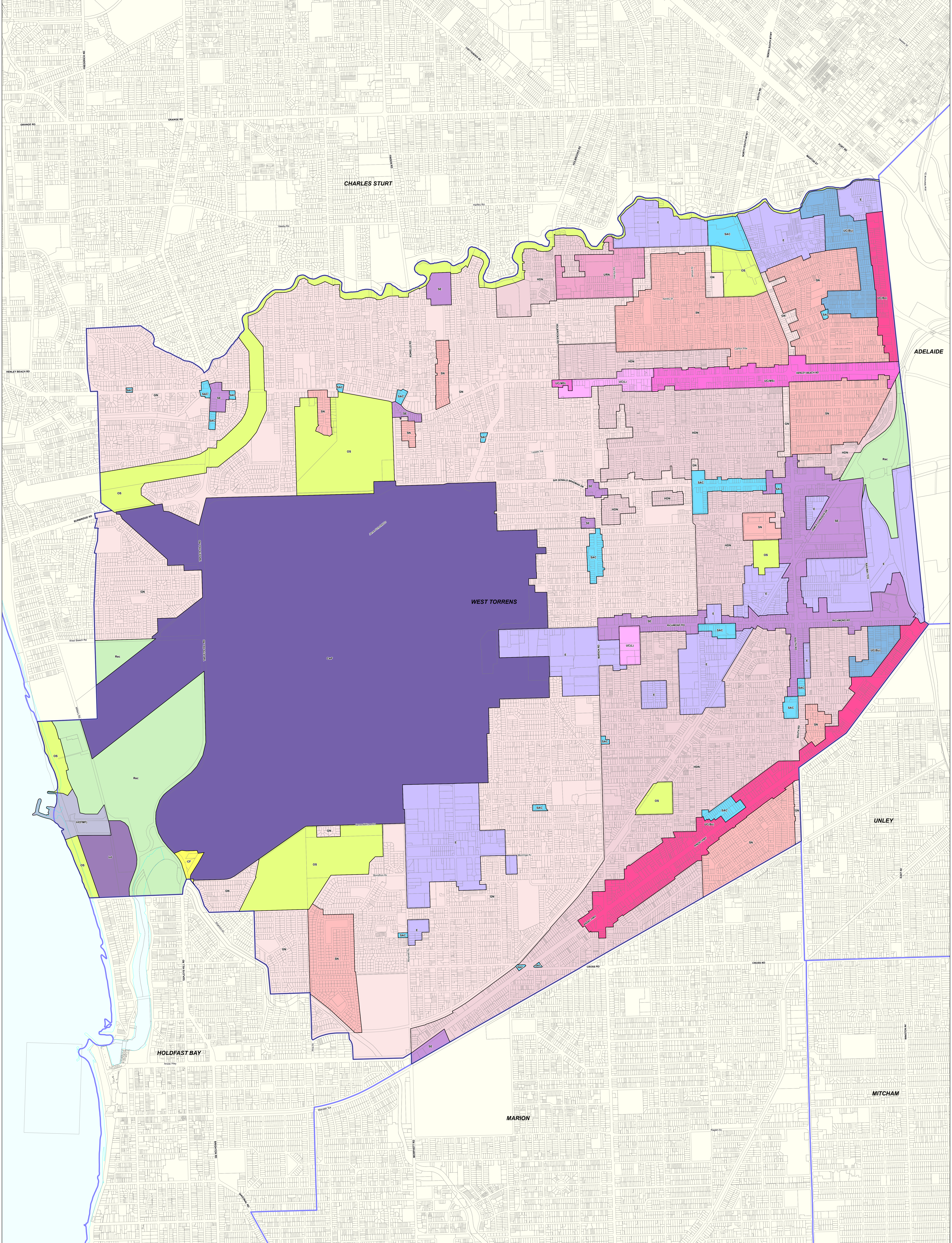
© Government of South Australia 2018
 No part of this document may be reproduced, stored in a retrieval system, or transmitted in any form, or by any means, without the prior written permission of the publisher, Department of Planning, Transport and Infrastructure.

While every reasonable effort has been made to ensure that this document is correct at the time of publication, the State of South Australia and its agencies, representatives, employees and contractors disclaim any and all liability to any person in respect to anything or the consequence of anything done or omitted to be done in reliance upon the whole or any part of this document.



Development Plan Map

- | | | | |
|---|---|--|--|
| <ul style="list-style-type: none"> ADSt - Adelaide Shores AI - Airfield BG - Bulky Goods C - Commercial CaM - Coastal Marina CaOS - Coastal Open Space Co - Community DCC - District Centre DI - Industry LC - Local Centre NC - Neighbourhood Centre OS - Open Space R - Residential UR - Urban Renewal UC - Urban Corridor Policy Area 1 - Arterial Roads 10 - Mixed Use 11 - Hilton | <ul style="list-style-type: none"> 12 - Marketon 13 - Never Gardens 14 - Richmond 15 - Tannymore Street 16 - Thebarton 18 - Medium Density 19 - Medium Density 2 - District Commercial 20 - Low Density 21 - Low Density 22 - Ashford Character 23 - Cowardin Mile End West Character 24 - Glenelg Character 25 - Lockleys Character 26 - Never Gardens Character 27 - Thebarton Character 28 - Torrensville Character 29 - Elston Street Conservation 3 - Local Commercial 30 - Mile End Conservation 31 - Hilton | <ul style="list-style-type: none"> 32 - Rose Street Conservation 33 - Torrensville East Conservation 34 - Boulevard 35 - High Street 36 - Transit Living 37 - Business 38 - Mixed Use Transition 4 - Office Park 5 - Recreation 6 - Biodiversity 7 - Komalla Park 8 - Infrastructure 9 - Noddy <p>Precinct</p> <ul style="list-style-type: none"> 2 - Richmond Road 3 - Sir Donald Bradman Drive (Mile End) 4 - South Road (Howick) 5 - South Road (Mile End) 6 - South Road (Mile End South) 7 - Mile End | <ul style="list-style-type: none"> 8 - Open Space |
|---|---|--|--|



West Torrens

2019 Code Consultation Map

P&D Code Zones
DRAFT

- P&D Code Zones**
- Infrastructure & Movement Systems
 - Commonwealth Facilities
 - Infrastructure
 - Infrastructure (Ferry and Marina Facilities)
 - Community Facilities
 - General Neighbourhood
 - Housing Diversity Neighbourhood

- Suburban Neighbourhood
- Urban Corridor (Boulevard)
- Urban Corridor (Living)
- Urban Corridor (Main Street)
- Urban Renewal Neighbourhood
- Suburban Activity Centre
- Urban Corridor (Business)
- Employment

- Resilient Communities & Environment**
- Open Space
 - Recreation
 - Local government boundary
 - Cadastral
 - Coastline HWM

- Productive Economy - Employment**
- Suburban Employment

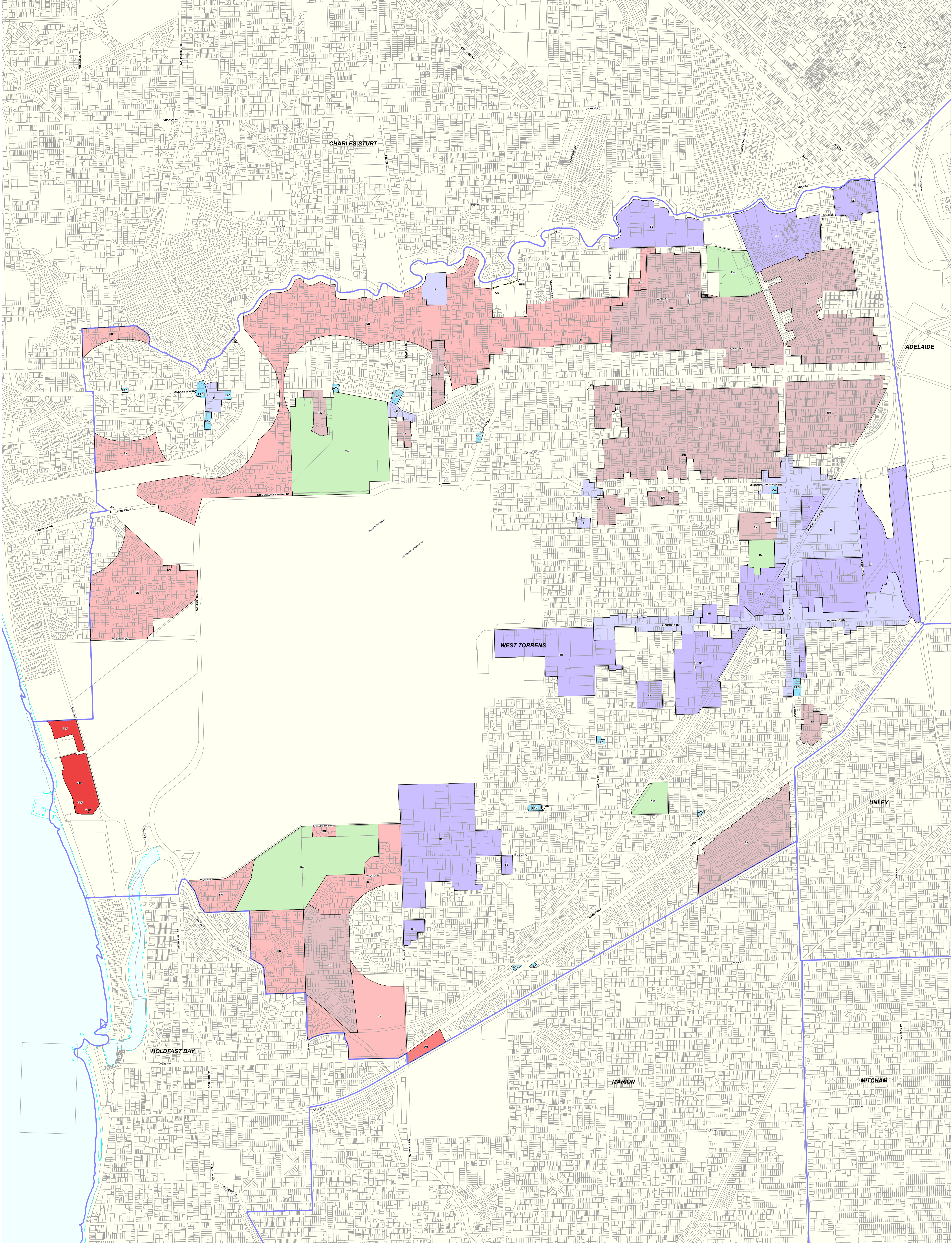
Produced by Department of Planning, Transport and Infrastructure
 Planning and Land Use Services
 GPO Box 1815 Adelaide SA 5001
 www.sa.gov.au
 Lambert Conformal Conic
 Projection
 Compiled 30 September 2019

© Government of South Australia 2019
 No part of this document may be reproduced, stored in a retrieval system, or transmitted in any form or by any means, without the prior written permission of the publisher, Department of Planning, Transport and Infrastructure.

While every reasonable effort has been made to ensure that this document is correct at the time of publication, the State of South Australia and its agencies, employees and contractors, disclaim any and all liability to any person in respect to anything or the consequences of anything done or omitted to be done in reliance upon the whole or any part of this document.

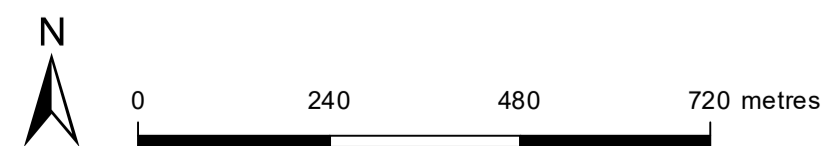


- P&D Code Zones Abbreviations**
- CF - Commonwealth Facilities
 - CMF - Commonwealth Facilities
 - E - Employment
 - GN - General Neighbourhood
 - HDN - Housing Diversity Neighbourhood
 - INF - Infrastructure
 - INF(M) - Infrastructure (Ferry and Marina Facilities)
 - OS - Open Space
 - Rec - Recreation
 - SAC - Suburban Activity Centre
 - SE - Suburban Employment
 - SN - Suburban Neighbourhood
 - UC(B) - Urban Corridor (Boulevard)
 - UC(L) - Urban Corridor (Living)
 - UC(MS) - Urban Corridor (Main Street)
 - UC(BS) - Urban Corridor (Business)
 - UN - Urban Renewal Neighbourhood



West Torrens

2020 Updated Code Consultation Map



P&D Code Zones
DRAFT

- | | | |
|---------------------------------|--|------------------|
| P&D Code Zones | Productive Economy - Employment | Coastline |
| Local Activity Centre | Local Activity Centre | Coastline HWM |
| Caravan and Tourist Park | Urban Corridor (Business) | |
| Established Neighbourhood | Employment | |
| General Neighbourhood | Strategic Employment | |
| Housing Diversity Neighbourhood | Resilient Communities & Environment | |
| Suburban Neighbourhood | Open Space | |
| Urban Neighbourhood | Recreation | |
| | Local government boundary | |

Produced by Atorney-General's Department
 Planning and Land Use Services
 GPO Box 1815 Adelaide SA 5001
 www.sa.gov.au
 Lambert Conformal Conic
 4 November 2020

© Government of South Australia 2020
 No part of this document may be reproduced, stored in a retrieval system, or transmitted in any form, or by any means, without the prior written permission of the publisher, the Attorney-General's Department.
 While every reasonable effort has been made to ensure that this document is correct at the time of publication, the State of South Australia and its agents, officers, employees and contractors, disclaim any and all liability to any person in respect to any error or the consequences of anything done or omitted to be done in reliance upon the whole or any part of this document.



PLA12/181

Current Development Plan Zone	Current Development Plan Policy Area	Current Development Plan Precinct	Consultation November 2019 Code Proposal	Consultation November 2020 Code Proposal	Planning & Design Code Subzone
Adelaide Shores			Recreation	Recreation / Caravan and Tourist Park (zone split)	
Airfield			Commonwealth Facilities	Commonwealth Facilities	
Bulky Goods			Suburban Employment	Employment	Retail Activity Centre
Coastal Marina			Infrastructure (Ferry and Marina Facilities)	Infrastructure (Ferry and Marina Facilities)	
Coastal Open Space			Open Space	Open Space	
Commercial	Arterial Roads Policy Area 1	Intersection Precinct 1	Suburban Employment	Employment	
Commercial	Arterial Roads Policy Area 1	Richmond Road Precinct 2	Suburban Employment	Employment	
Commercial	Arterial Roads Policy Area 1	Sir Donald Bradman Drive (Mile End) Precinct 3	Suburban Employment	Employment	
Commercial	Arterial Roads Policy Area 1	South Road (Keswick) Precinct 4	Suburban Employment	Employment	
Commercial	Arterial Roads Policy Area 1	South Road (Mile End South) Precinct 6	Suburban Employment	Employment	
Commercial	Arterial Roads Policy Area 1	South Road (Mile End) Precinct 5	Suburban Employment	Employment	
Commercial	Arterial Roads Policy Area 1		Suburban Employment	Employment	
Commercial	District Commercial Policy Area 2		Suburban Employment	Employment	
Commercial	Local Commercial Policy Area 3		Suburban Employment	Employment	
Commercial	Office Park Policy Area 4		Suburban Employment	Employment	
Community	Recreation	Mile End	Recreation	Recreation	
Community	Recreation	Open Space	Recreation	Recreation	
Community	Recreation		Recreation	Recreation	

Current Development Plan Zone	Current Development Plan Policy Area	Current Development Plan Precinct	Consultation November 2019 Code Proposal	Consultation November 2020 Code Proposal	Planning & Design Code Subzone
Community			Community Facilities	Community Facilities	
District Centre	Brickworks		Suburban Activity Centre	Suburban Activity Centre	
District Centre	Kurralta Park		Suburban Activity Centre	Suburban Activity Centre	
Industry	Infrastructure Policy Area 8		Infrastructure	Infrastructure / Community Facilities (zone split)	
Industry	Mixed Use Policy Area 10		Employment	Strategic Employment	
Industry	Netley Policy Area 9		Employment	Strategic Employment	
Industry			Employment	Strategic Employment	
Local Centre			Suburban Activity Centre	Local Activity Centre	
Neighbourhood Centre	Hilton		Suburban Activity Centre	Suburban Activity Centre	
Neighbourhood Centre	Marleston		Suburban Activity Centre	Suburban Activity Centre	
Neighbourhood Centre	Novar Gardens		Suburban Activity Centre	Suburban Activity Centre	
Neighbourhood Centre	Richmond		Suburban Activity Centre	Suburban Activity Centre	
Neighbourhood Centre	Tennyson Street		Suburban Activity Centre	Suburban Activity Centre	
Neighbourhood Centre	Thebarton		Suburban Activity Centre	Suburban Activity Centre	
Open Space			Open Space	Open Space	
Residential	Ashford Character		Suburban Neighbourhood	Established Neighbourhood	
Residential	Cowandilla / Mile End West Character		Housing Diversity Neighbourhood	Established Neighbourhood	
Residential	Elston Street Conservation		Suburban Neighbourhood	Established Neighbourhood	
Residential	Glandore Character		Suburban Neighbourhood	Established Neighbourhood	
Residential	Lockleys Character		Suburban Neighbourhood	Established Neighbourhood	

Current Development Plan Zone	Current Development Plan Policy Area	Current Development Plan Precinct	Consultation November 2019 Code Proposal	Consultation November 2020 Code Proposal	Planning & Design Code Subzone
Residential	Low Density		General Neighbourhood	General Neighbourhood	
Residential	Low Density		General Neighbourhood	General Neighbourhood / Suburban Neighbourhood (zone split)	
Residential	Medium Density		Housing Diversity Neighbourhood	Housing Diversity Neighbourhood	
Residential	Medium Density		Housing Diversity Neighbourhood	Housing Diversity Neighbourhood	
Residential	Mile End Conservation		Suburban Neighbourhood	Established Neighbourhood	
Residential	Novar Gardens Character		Suburban Neighbourhood	Established Neighbourhood	
Residential	Richmond Conservation		Suburban Neighbourhood	Established Neighbourhood	
Residential	Rose Street Conservation		Suburban Neighbourhood	Established Neighbourhood	
Residential	Thebarton Character		Suburban Neighbourhood	Established Neighbourhood	
Residential	Torrensville Character		Suburban Neighbourhood	Established Neighbourhood	
Residential	Torrensville East Conservation		Suburban Neighbourhood	Established Neighbourhood	
Urban Corridor	Boulevard		Urban Corridor (Boulevard)	Urban Corridor (Boulevard)	
Urban Corridor	Business		Urban Corridor (Business)	Urban Corridor (Business)	
Urban Corridor	High Street		Urban Corridor (Main Street)	Urban Corridor (Main Street)	
Urban Corridor	Transit Living		Urban Corridor (Living	Urban Corridor (Living)	
Urban Renewal	Mixed Use Transition		Urban Renewal Neighbourhood	Urban Renewal Neighbourhood	Mixed Use Transition
Urban Renewal			Urban Renewal Neighbourhood	Urban Renewal Neighbourhood	