

# Open Space and Places for People Grant Program

Summary Sheets | Published June 2021 | Version 1.2

OFFICE FOR  
DESIGN +  
ARCHITECTURE SA



Government of South Australia  
Attorney-General's Department







Open Space and Places for People Grant Program Summary Sheets

© Government of South Australia. Published June 2021. All rights reserved.

While every reasonable effort has been made to ensure that this document is correct at the time of publication, the Minister for Planning and Local Government, the State of South Australia, its agencies, instrumentalities, employees and contractors disclaim any and all liability to any person in respect to anything or the consequence of anything done or omitted to be done in reliance upon the whole or any part of this document.



# Contents

---

## Project Summary Sheets

- |           |   |           |   |
|-----------|---|-----------|---|
| <b>5</b>  | <b>Alexandrina Council</b><br>Upgrade Goolwa Beach Public Spaces  | <b>33</b> | <b>City of West Torrens</b><br>Apex Park Stage 2 Redevelopment                          |
| <b>7</b>  | <b>City of Adelaide</b><br>Events Infrastructure Kadlitpina/Rundle Park<br>and Murlawirrapurka/Rymill Park                          | <b>35</b> | <b>City of West Torrens</b><br>Land Purchase for a Shared Path, Thebarton               |
| <b>9</b>  | <b>City of Adelaide</b><br>Paxtons Walk Revitalisation  | <b>37</b> | <b>Copper Coast Council</b><br>Queen Square Activation Project                          |
| <b>11</b> | <b>City of Adelaide</b><br>Reviving Laneways to Adelaide's West End<br>- Stage 1 - Upgrading Soloman, Rosina and<br>Burnett Streets | <b>39</b> | <b>Copper Coast Council</b><br>Wallaroo to Moonta Walking and Cycling<br>Shared Path    |
| <b>13</b> | <b>City of Charles Sturt</b><br>Military Road and Main Street Upgrade and<br>Public Plaza   | <b>41</b> | <b>District Council of Streaky Bay</b><br>Streaky Bay Youth Precinct                    |
| <b>15</b> | <b>City of Holdfast Bay</b><br>Revitalisation of Former Buffalo Site  | <b>43</b> | <b>District Council of Yankalilla</b><br>Normanville Foreshore Project                  |
| <b>17</b> | <b>City of Marion</b><br>Hugh Johnson Boulevard Regional Reserve  | <b>45</b> | <b>Mid Murray Council</b><br>Murray Coorong Trail                                       |
| <b>19</b> | <b>City of Norwood Payneham &amp; St Peters</b><br>Dunstan Adventure Playground<br>Redevelopment                                    | <b>47</b> | <b>Mount Barker District Council</b><br>Nairne Village Green - Play and Youth - Stage 2 |
| <b>21</b> | <b>City of Norwood Payneham &amp; St Peters</b><br>River Torrens Linear Park Shared Path<br>Enhancement - Stage 2                   | <b>49</b> | <b>The Barossa Council</b><br>Tanunda Recreation Inclusive Playground                   |
| <b>23</b> | <b>City of Onkaparinga</b><br>Port Willunga North Coast Park Trail  | <b>51</b> | <b>The Flinders Ranges Council</b><br>Flinders Ranges Streetscaping Implementation      |
| <b>25</b> | <b>City of Playford</b><br>Fremont Park Eastern Upgrade - Stage 3   | <b>53</b> | <b>The Flinders Ranges Council</b><br>The Quorn Bush Tucker Walk Stage 2                |
| <b>27</b> | <b>City of Port Adelaide Enfield</b><br>E.A. Carlson Reserve and Playspace Upgrade  | <b>55</b> | <b>Town of Gawler</b><br>Princes Park Community Recreation Hub<br>Stage 1               |
| <b>29</b> | <b>City of Salisbury</b><br>Green Trails Program - Little Para River,<br>Salisbury Heights  | <b>57</b> | <b>Town of Walkerville</b><br>Hamilton Reserve Rejuvenation                             |
| <b>31</b> | <b>City of Tea Tree Gully</b><br>Golden Fields Adventure Playspace  |           |   |







Wilfred Taylor Reserve, City of Onkaparinga  
Photo by Heath Riggs



# Planning and Development Fund

---

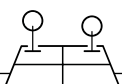
## What is it?

The Planning and Development Fund (the Fund) operates under the *Planning, Development and Infrastructure Act 2016* (the Act) and provides the means for open space and public realm investment across South Australia.

Money paid into the Fund is derived from monetary payments in lieu of open space requirements for development involving the division of land into 20 or fewer allotments and also for strata and community titles. The Fund is expended in line with provisions within the Act and is in line with provisions within the Act and administered by the Office for Design and Architecture SA within the Attorney-General's Department.

The Fund allows the South Australian Government to adopt a state-wide approach to strategically implement open space and public realm projects in an objective manner. While supporting the Minister for Planning and Local Government (the Minister) to acquire, manage and develop land for open space, the Fund provides grant funding opportunities for local government through the **Open Spaces and Places for People Grant Program** (the Grant Program).

The following summary sheets present projects funded in the 2020-21 Grant Program, including a total of 27 projects with a combined funding request of \$22.2 million. These projects will be delivered across 21 council areas, focusing on recreational, social and wellbeing outcomes for communities, while strengthening the conservation and enjoyment of our natural environment.







# Project Summary Sheets

---







# Upgrade Goolwa Beach Public Spaces

Alexandrina Council

---

The State Government is committed to investing in open space and public realm across South Australia, by supporting projects lead by local government. The Upgrade Goolwa Beach Public Spaces project received funding in the 2020-21 Open Space and Places for People Grant Program, financed through the Planning and Development Fund.

## Cost and Funding Contribution

Contribution Source	Amount (GST exclusive)
Council Contribution <sup>1</sup>	\$1,045,000
Other Contribution <sup>2</sup>	\$0
Grant Contribution <sup>3</sup>	\$995,000
<b>Total Project Cost</b>	<b>\$2,040,000</b>

1. Council's contribution is the direct investment toward the project, allocated from the council's budget. This can also include in-kind works where a monetary amount equivalent has been provided.
2. Other contributions can consist of funding support from community groups, as well as external funding from other State and Commonwealth Government grant programs. Additionally, this can include joint partnerships with other councils to achieve regional priorities.
3. Grant contribution is the funding amount provided to council by the Government of South Australia, financed by the Planning and Development Fund.

## Project Duration

This project is to commence from July 2021 with anticipated completion in December 2022.\*

\*Grant recipients are provided 18 months to complete the project. The project program and duration may be subject to change.

## Project Description

The project seeks to deliver a range of upgraded public spaces, new community infrastructure, amenities and facilities within Goolwa Beach. Key elements of the project include:

- ✓ Creating a beachside promenade between the carpark and the foreshore dunes
- ✓ Shading, seating, shelters, showers, elevated viewing deck, natural landscaping and opportunities for smart technology
- ✓ Providing a new shared path to connect Goolwa Beach with Encounter Bikeway providing safer pedestrian and cycle access
- ✓ Creating infrastructure for 4WD vehicle's and upgrading of the existing access track
- ✓ Upgrading existing pedestrian access to the beach for shared use and accessibility



# Additional Design Information

## Concept Plan



- 1 SLSC vehicle and pedestrian/disability access to beach - widen track, replace erosion fencing, install 'soft' infrastructure
- 2 SLSC watch tower (existing)
- 3 Emergency Services car park spaces
- 4 Shade structure and furniture
- 5 Rehabilitate dune
- 6 Beach front plaza with seats, shade, public art, drinking fountain, bike parking
- 7 Raised timber viewing deck behind low retaining wall/fence, with ramp access
- 8 Upgrade stairs to beach (also investigate potential for more protected alignment)
- 9 Shower heads
- 10 New cafe with elevated deck (located behind existing cafe location)
- 11 Pedestrian 'drop-off' zone
- 12 Service access plaza with underground waste water tank
- 13 New SLSC building incorporating public toilets/change room (approximate location only)
- 14 Access path for SLSC/emergency vehicles
- 15 'Drive-through' parking spaces
- 16 Pathway for horses - shared
- 17 Pathway for horses - shared
- 18 Safe crossing point for pedestrians, cyclists and horses
- 19 Directional/information/interpretative signage
- 20 Horse float/long vehicle parking area (informal), incorporating tacking posts and water
- 21 Designated 4WD slip lane (left turn only) for access to beach
- 22 Electric vehicle charging facility
- Lighting location (indicative only)
- - - Potential 2100 shoreline

## Visualisation (Artist Impression)



# Events Infrastructure Kadlitpina/Rundle Park and Murlawirrapurka/Rymill Park

City of Adelaide

---

The State Government is committed to investing in open space and public realm across South Australia, by supporting projects lead by local government. The Events Infrastructure Kadlitpina/Rundle and Murlawirrapurka/Rymill Parks project received funding in the 2020-21 Open Space and Places for People Grant Program, financed through the Planning and Development Fund. This project was supported as a strategic investment.

## Cost and Funding Contribution

Contribution Source	Amount (GST exclusive)
Council Contribution <sup>1</sup>	\$1,326,733
Other Contribution <sup>2</sup>	\$0
Grant Contribution <sup>3</sup>	\$1,108,480
<b>Total Project Cost</b>	<b>\$2,435,213</b>

1. Council's contribution is the direct investment toward the project, allocated from the council's budget. This can also include in-kind works where a monetary amount equivalent has been provided.
2. Other contributions can consist of funding support from community groups, as well as external funding from other State and Commonwealth Government grant programs. Additionally, this can include joint partnerships with other councils to achieve regional priorities.
3. Grant contribution is the funding amount provided to council by the Government of South Australia, financed by the Planning and Development Fund.

## Project Duration

This project is to commence from July 2021 with anticipated completion in March 2022.\*

\*Grant recipients are provided 18 months to complete the project. The project program and duration may be subject to change.

## Project Description

The project seeks to provide improved and upgraded services that will support the ongoing and continued use of Rundle and Rymill Parks as major community event and entertainment hubs in the eastern Park Lands. Key elements of the project include:

- ✓ Accessibility to permanent infrastructure to support major community events and public safety
- ✓ Supporting Adelaide's local and international events to be more sustainable in operation, reducing economic and environmental impacts
- ✓ Providing services infrastructure that contributes to the vibrancy of Adelaide while addressing current and projected demand

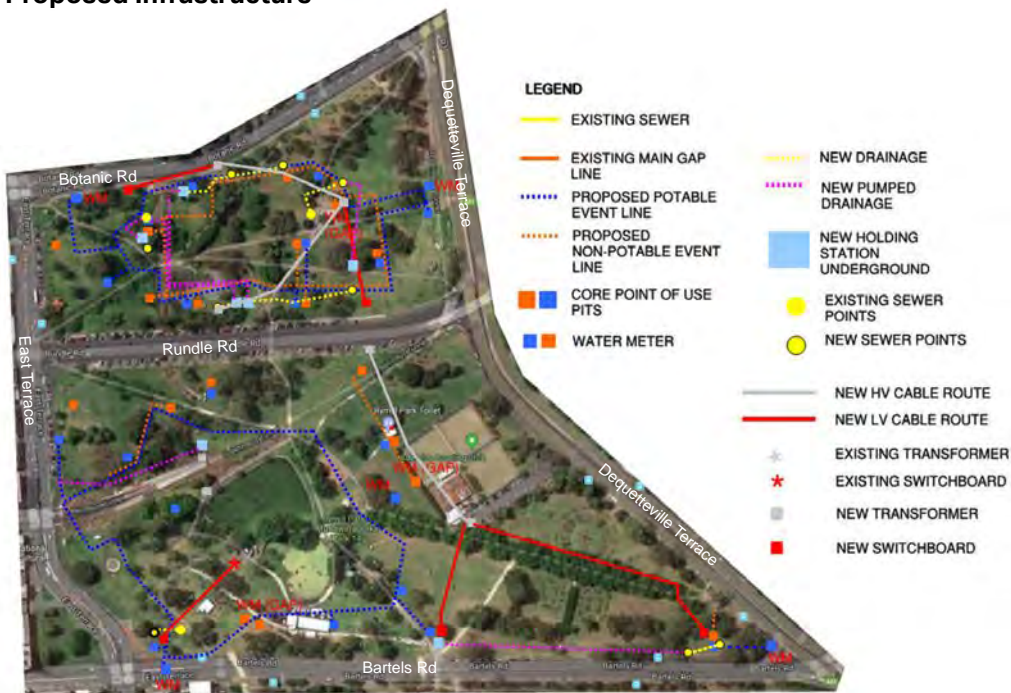


# Additional Design Information

## Location Plan



## Proposed Infrastructure



# Paxtons Walk Revitalisation

City of Adelaide

---

The State Government is committed to investing in open space and public realm across South Australia, by supporting projects lead by local government. The Paxtons Walk Revitalisation project received funding in the 2020-21 Open Space and Places for People Grant Program, financed through the Planning and Development Fund. This project was supported as a strategic investment.

## Cost and Funding Contribution

Contribution Source	Amount (GST exclusive)
Council Contribution <sup>1</sup>	\$500,000
Other Contribution <sup>2</sup>	\$0
Grant Contribution <sup>3</sup>	\$2,200,000
<b>Total Project Cost</b>	<b>\$2,700,000</b>

1. Council's contribution is the direct investment toward the project, allocated from the council's budget. This can also include in-kind works where a monetary amount equivalent has been provided.
2. Other contributions can consist of funding support from community groups, as well as external funding from other State and Commonwealth Government grant programs. Additionally, this can include joint partnerships with other councils to achieve regional priorities.
3. Grant contribution is the funding amount provided to council by the Government of South Australia, financed by the Planning and Development Fund.

## Project Duration

This project is to commence from September 2021 with anticipated completion in July 2022.\*

\*Grant recipients are provided 18 months to complete the project. The project program and duration may be subject to change.

## Project Description

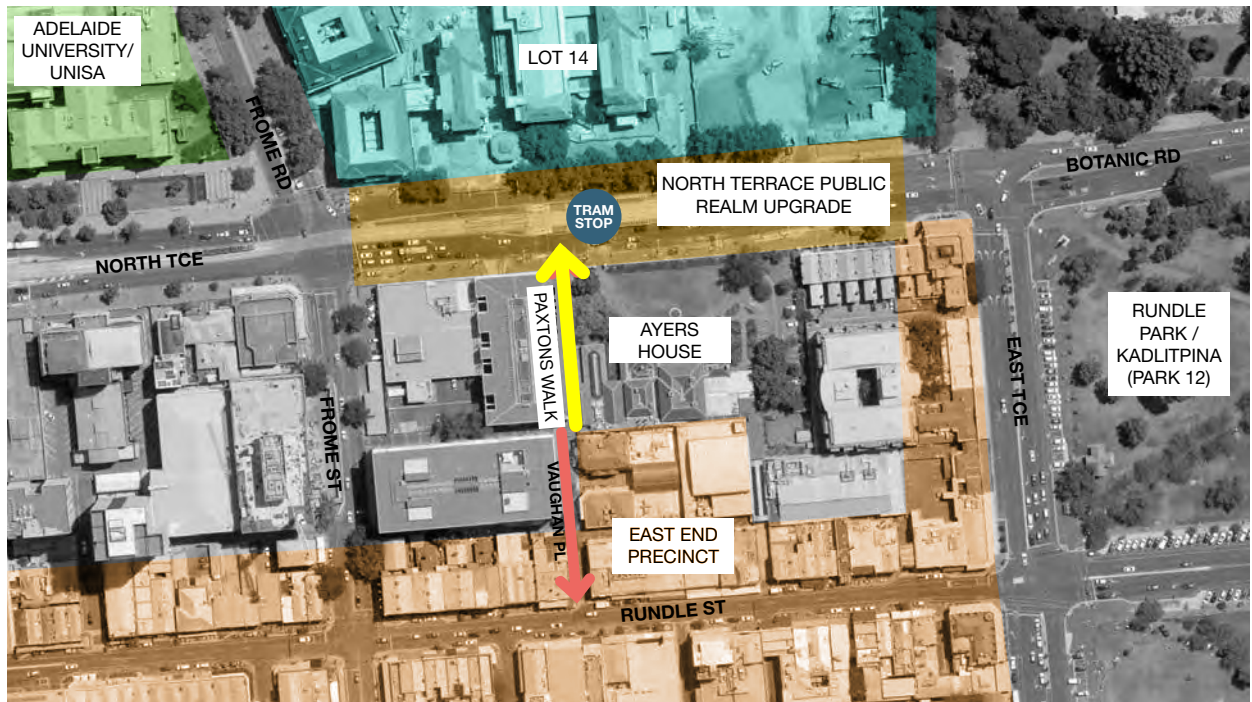
This project seeks to transform a tired and constrained walkway into a vibrant, welcoming, green and accessible place. Key elements of the project include:

- ✔ Providing a key linkage between Adelaide's East End Precinct and Lot Fourteen
- ✔ Creating a welcoming and accessible place, while reflecting the character of the East End
- ✔ Addressing projected future increase in pedestrian volume and movement
- ✔ Providing tiered public seating and flexible outdoor space to complement dining opportunities for adjacent businesses
- ✔ Opening views to Ayers House gardens by removing the shared boundary fence
- ✔ Creating a green and comfortable environment that interfaces between the differing environments of the Ayers House landscape, the Palais apartments, Vaughan Place and North Terrace



## Additional Design Information

### Location Plan



### Visualisation (Artist Impression)



# Reviving Laneways to Adelaide's West End - Stage 1 Upgrading Soloman, Rosina and Burnett Streets

City of Adelaide

---

The State Government is committed to investing in open space and public realm across South Australia, by supporting projects lead by local government. The Reviving Laneways to Adelaide's West End - Stage 1 - Upgrading Soloman, Rosina and Burnett Streets project received funding in the 2020-21 Open Space and Places for People Grant Program, financed through the Planning and Development Fund. This project was supported as a strategic investment.

## Cost and Funding Contribution

Contribution Source	Amount (GST exclusive)
Council Contribution <sup>1</sup>	\$452,500
Other Contribution <sup>2</sup>	\$0
Grant Contribution <sup>3</sup>	\$357,500
<b>Total Project Cost</b>	<b>\$810,000</b>

1. Council's contribution is the direct investment toward the project, allocated from the council's budget. This can also include in-kind works where a monetary amount equivalent has been provided.
2. Other contributions can consist of funding support from community groups, as well as external funding from other State and Commonwealth Government grant programs. Additionally, this can include joint partnerships with other councils to achieve regional priorities.
3. Grant contribution is the funding amount provided to council by the Government of South Australia, financed by the Planning and Development Fund.

## Project Duration

This project is to commence from July 2021 with anticipated completion in December 2021.\*

\*Grant recipients are provided 18 months to complete the project. The project program and duration may be subject to change.

## Project Description

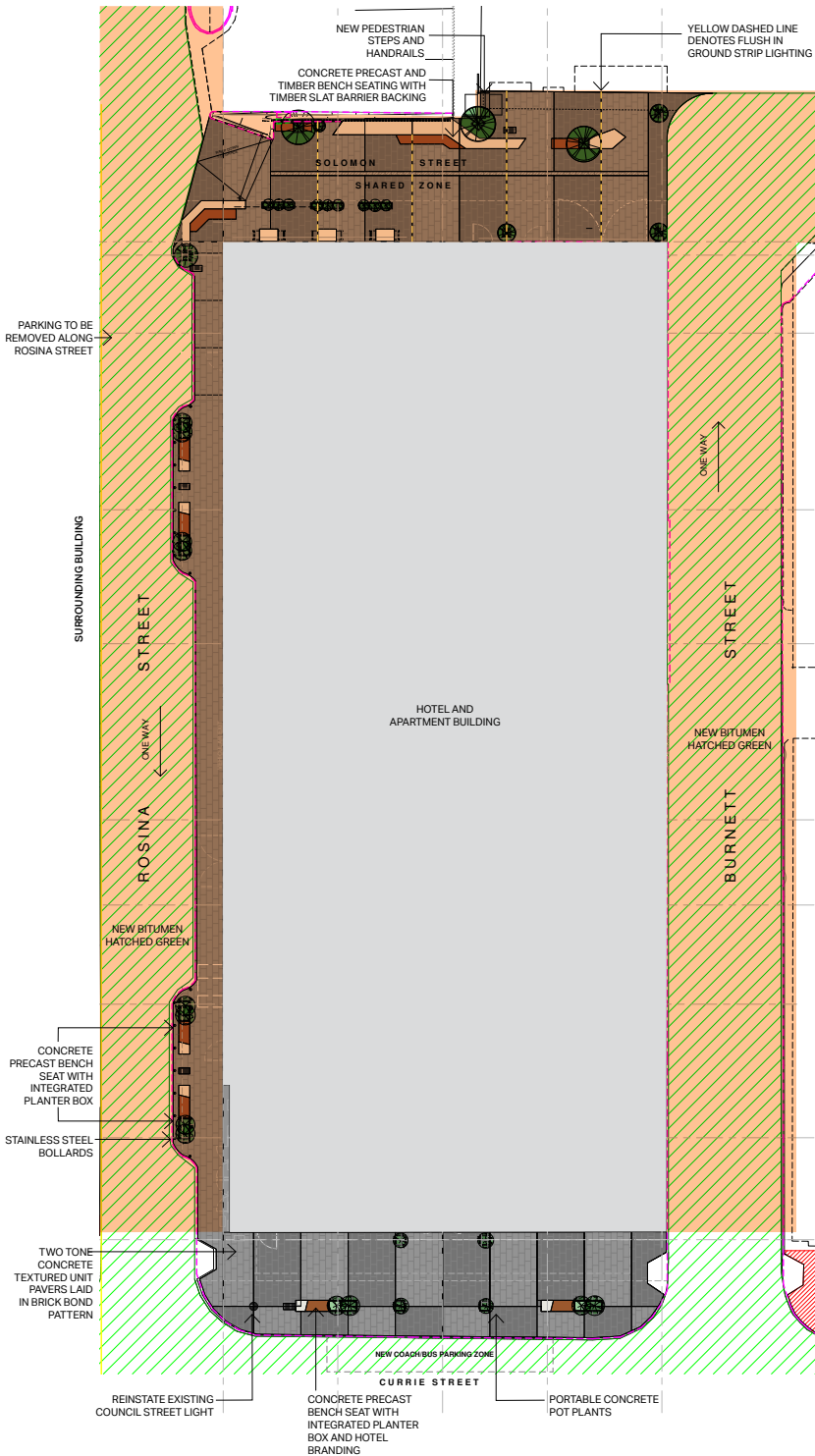
The project seeks to upgrade the interconnected laneways of Solomon, Burnett and Rosina streets, to support the extension of the entertainment precinct and create a pedestrian-friendly public realm. Stage 1 of the project involves the delivery of public realm upgrades on Solomon Street. Key elements of the project include:

- ✓ Aligning with significant visitor volume and surrounding investment to the precinct
- ✓ Supporting enhanced public realm amenity for new residents and tourists
- ✓ Improvements to existing pedestrian accessibility and public safety
- ✓ Use of innovative green infrastructure to cool and improve climate resilience



# Additional Design Information

## Concept Plan



## Location Map



## Location Plan



# Military Road and Main Street Upgrade and Public Plaza

City of Charles Sturt

---

The State Government is committed to investing in open space and public realm across South Australia, by supporting projects lead by local government. The Military Road and Main Street Upgrade and Public Plaza project received funding in the 2020-21 Open Space and Places for People Grant Program, financed through the Planning and Development Fund.

## Cost and Funding Contribution

Contribution Source	Amount (GST exclusive)
Council Contribution <sup>1</sup>	\$9,145,550
Other Contribution <sup>2</sup>	\$2,590,651
Grant Contribution <sup>3</sup>	\$2,612,638
<b>Total Project Cost</b>	<b>\$14,348,839</b>

1. Council's contribution is the direct investment toward the project, allocated from the council's budget. This can also include in-kind works where a monetary amount equivalent has been provided.
2. Other contributions can consist of funding support from community groups, as well as external funding from other State and Commonwealth Government grant programs. Additionally, this can include joint partnerships with other councils to achieve regional priorities.
3. Grant contribution is the funding amount provided to council by the Government of South Australia, financed by the Planning and Development Fund.

## Project Duration

This project is to commence from July 2021 with anticipated completion in October 2022.\*

\*Grant recipients are provided 18 months to complete the project. The project program and duration may be subject to change.

## Project Description

The project seeks to transform the western end of Main Street (Seaview Road to Military Road) in Henley Beach into a public plaza, as well as revitalise the streetscapes of Military Road (North to South Street) and Main Street (Military Road to East Terrace). Key elements of the project include:

- ✔ Creating a public plaza with shaded lawn, sheltered public seating, improved pedestrian access, bicycle rails, feature lighting, outdoor dining areas and public art
- ✔ Landscaping with additional greenery, tree canopy and wider paths
- ✔ Integrating the space with the vibrant Henley Square to create an open space linkage for the local community
- ✔ Reducing urban heat, encouraging active transport, and improving the public realm to promote community participation
- ✔ Improving street amenity and pedestrian safety while providing better access to Henley Square

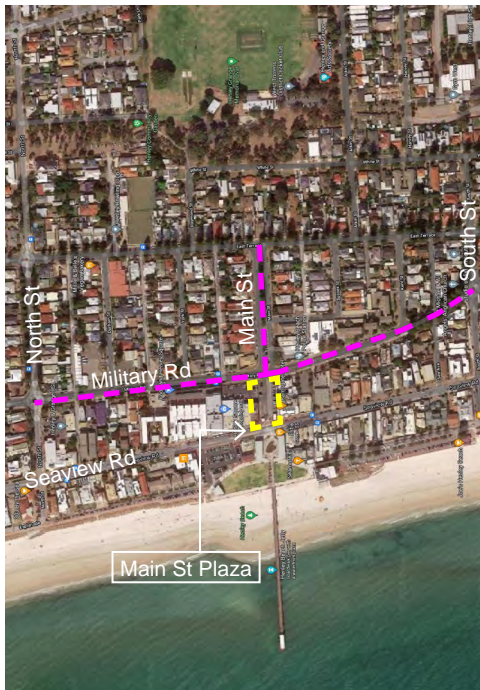


# Additional Design Information

## Concept Plan



## Location Plan



## Visualisation (Artist Impression)



- Project Extent
- Main Street Plaza



# Revitalisation of Former Buffalo Site

City of Holdfast Bay

---

The State Government is committed to investing in open space and public realm across South Australia, by supporting projects lead by local government. The Revitalisation of Former Buffalo Site project received funding in the 2020-21 Open Space and Places for People Grant Program, financed through the Planning and Development Fund.

## Cost and Funding Contribution

Contribution Source	Amount (GST exclusive)
Council Contribution <sup>1</sup>	\$175,000
Other Contribution <sup>2</sup>	\$0
Grant Contribution <sup>3</sup>	\$100,000
<b>Total Project Cost</b>	<b>\$275,000</b>

1. Council's contribution is the direct investment toward the project, allocated from the council's budget. This can also include in-kind works where a monetary amount equivalent has been provided.
2. Other contributions can consist of funding support from community groups, as well as external funding from other State and Commonwealth Government grant programs. Additionally, this can include joint partnerships with other councils to achieve regional priorities.
3. Grant contribution is the funding amount provided to council by the Government of South Australia, financed by the Planning and Development Fund.

## Project Duration

This project is to commence from July 2021 with anticipated completion in July 2022.\*

\*Grant recipients are provided 18 months to complete the project. The project program and duration may be subject to change.

## Project Description

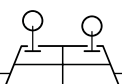
The project seeks to develop conceptual and detailed design for the re-purposing of the former HMS buffalo site for future community use, complementing the already completed upgrade of Wigley Reserve. Key elements of the project include:

- ✓ Designing a multi-use space for recreation and leisure activities including water access and barbecue facilities, to add vibrancy to the area
- ✓ Designing open natural space with landscaping, vegetation, shaded areas and seating
- ✓ Prioritising improved accessibility and safety by re-imagining the site no longer accessible to the community
- ✓ Designing a high quality community space of regional and Kaurna significance, enhancing recreation and tourism opportunities
- ✓ Promoting urban greening by increasing native species through plant selection



# Additional Design Information

## Location Plan



# Hugh Johnson Boulevard Regional Reserve

City of Marion

---

The State Government is committed to investing in open space and public realm across South Australia, by supporting projects lead by local government. The Hugh Johnson Boulevard Regional Reserve project received funding in the 2020-21 Open Space and Places for People Grant Program, financed through the Planning and Development Fund.

## Cost and Funding Contribution

Contribution Source	Amount (GST exclusive)
Council Contribution <sup>1</sup>	\$801,184
Other Contribution <sup>2</sup>	\$0
Grant Contribution <sup>3</sup>	\$801,184
<b>Total Project Cost</b>	<b>\$1,602,368</b>

1. Council's contribution is the direct investment toward the project, allocated from the council's budget. This can also include in-kind works where a monetary amount equivalent has been provided.
2. Other contributions can consist of funding support from community groups, as well as external funding from other State and Commonwealth Government grant programs. Additionally, this can include joint partnerships with other councils to achieve regional priorities.
3. Grant contribution is the funding amount provided to council by the Government of South Australia, financed by the Planning and Development Fund.

## Project Duration

This project is to commence from December 2021 with anticipated completion in June 2022.\*

\*Grant recipients are provided 18 months to complete the project. The project program and duration may be subject to change.

## Project Description

The project seeks to upgrade a regional level playground and reserve at Hugh Johnson Boulevard Reserve, Sheidow Park. The reserve is over four hectares in area, and aims to become a destination for community activity and recreation. This area provides public open space for both local residents and visitors from within and outside the City of Marion. Key elements of the project include:

- ✓ Providing a high-quality green space and improvements to a site identified as significant to the community
- ✓ Considering climate change resilience through increased tree canopy and appropriate landscaping
- ✓ Connecting to the Coast to Vines Rail Trail and the Glenthorne Farm National Park
- ✓ Implementing unstructured recreational opportunities including nature play, basketball court, fitness areas, BMX track and shared use paths to encourage physical activity in the community

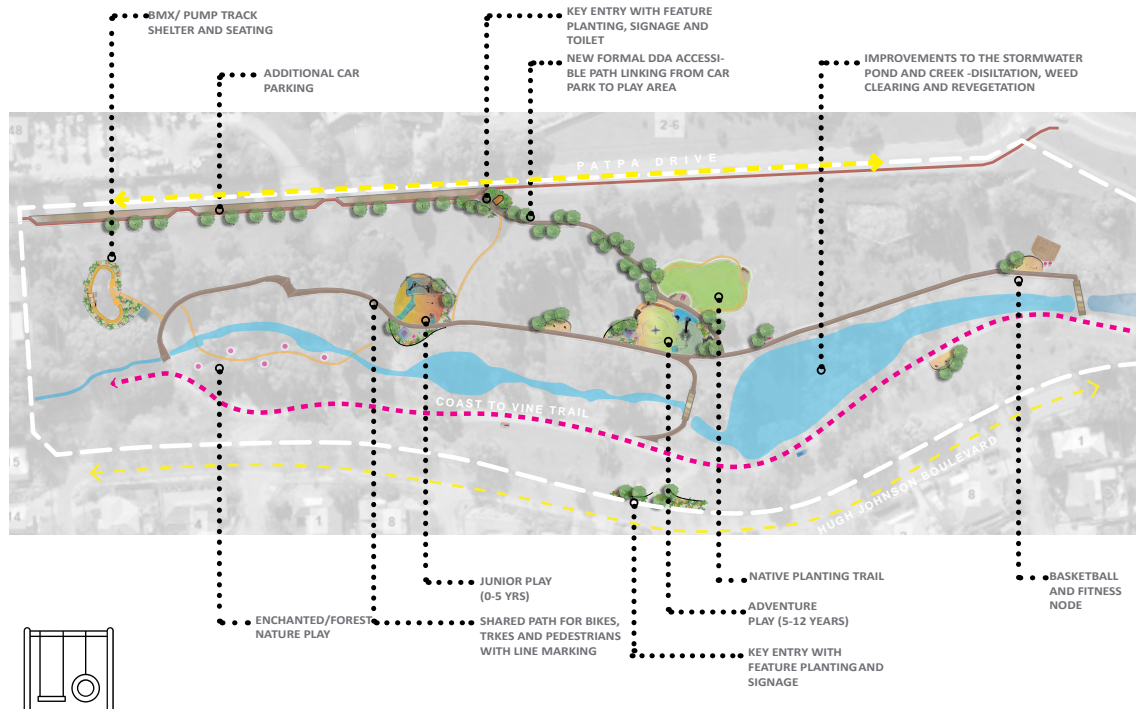


# Additional Design Information

## Location Plan



## Concept Plan



# Dunstan Adventure Playground Redevelopment

City of Norwood Payneham & St Peters

---

The State Government is committed to investing in open space and public realm across South Australia, by supporting projects lead by local government. The Dunstan Adventure Playground Redevelopment project received funding in the 2020-21 Open Space and Places for People Grant Program, financed through the Planning and Development Fund.

## Cost and Funding Contribution

Contribution Source	Amount (GST exclusive)
Council Contribution <sup>1</sup>	\$550,000
Other Contribution <sup>2</sup>	\$0
Grant Contribution <sup>3</sup>	\$450,000
<b>Total Project Cost</b>	<b>\$1,000,000</b>

1. Council's contribution is the direct investment toward the project, allocated from the council's budget. This can also include in-kind works where a monetary amount equivalent has been provided.
2. Other contributions can consist of funding support from community groups, as well as external funding from other State and Commonwealth Government grant programs. Additionally, this can include joint partnerships with other councils to achieve regional priorities.
3. Grant contribution is the funding amount provided to council by the Government of South Australia, financed by the Planning and Development Fund.

## Project Duration

This project is to commence from July 2021 with anticipated completion in January 2023.\*

\*Grant recipients are provided 18 months to complete the project. The project program and duration may be subject to change.

## Project Description

The project seeks to design and construct a new playground while maintaining some key elements of the existing Dunstan Adventure Playground. Key elements of the project include:

- ✓ Re-designing of the play space through construction of new toilets, playground equipment, fixed shade structures, carpark and split-level embankment
- ✓ Creating safe linkages between the playground, shared path and the River Torrens
- ✓ Creating a benchmark for innovative and unique playgrounds
- ✓ Enticing users to spend longer periods of time at the playground and attract users from outside the City of Norwood Payneham & St Peters council area

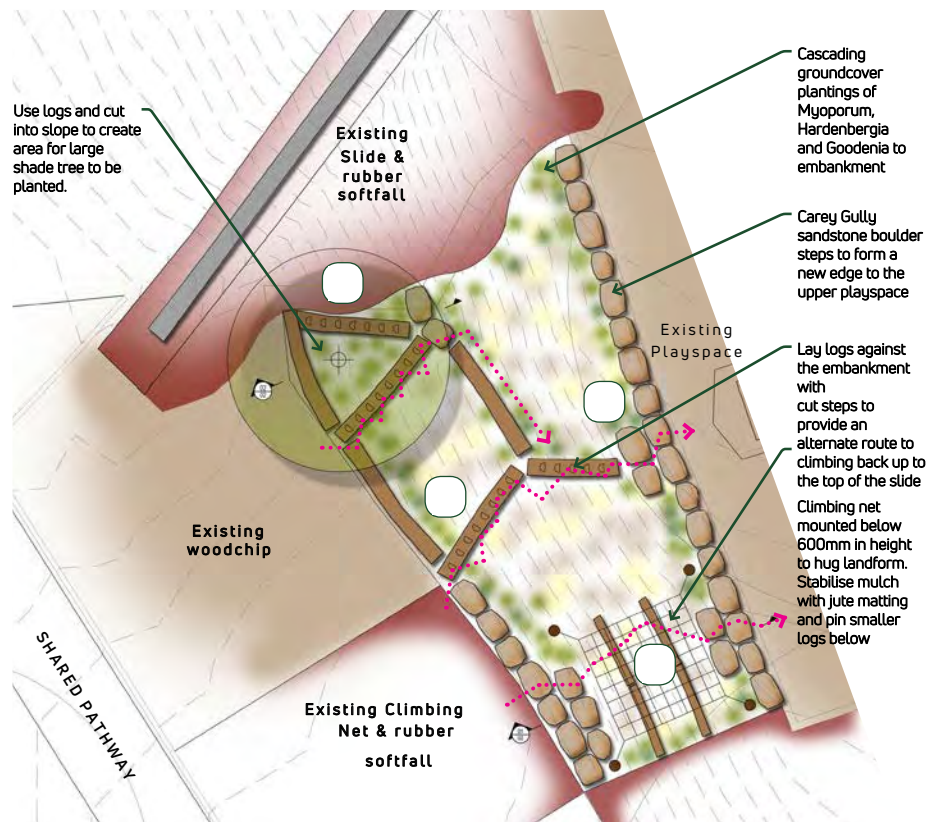


## Additional Design Information

### Location Plan



### Concept Plan



# River Torrens Linear Park Shared Path Enhancement Stage 2

City of Norwood Payneham & St Peters

---

The State Government is committed to investing in open space and public realm across South Australia, by supporting projects lead by local government. The River Torrens Linear Park Shared Path Enhancement - Stage 2 project received funding in the 2020-21 Open Space and Places for People Grant Program, financed through the Planning and Development Fund.

## Cost and Funding Contribution

Contribution Source	Amount (GST exclusive)
Council Contribution <sup>1</sup>	\$1,625,000
Other Contribution <sup>2</sup>	\$0
Grant Contribution <sup>3</sup>	\$1,350,000
<b>Total Project Cost</b>	<b>\$2,975,000</b>

1. Council's contribution is the direct investment toward the project, allocated from the council's budget. This can also include in-kind works where a monetary amount equivalent has been provided.
2. Other contributions can consist of funding support from community groups, as well as external funding from other State and Commonwealth Government grant programs. Additionally, this can include joint partnerships with other councils to achieve regional priorities.
3. Grant contribution is the funding amount provided to council by the Government of South Australia, financed by the Planning and Development Fund.

## Project Duration

This project is to commence from October 2021 with anticipated completion in April 2022.\*

\*Grant recipients are provided 18 months to complete the project. The project program and duration may be subject to change.

## Project Description

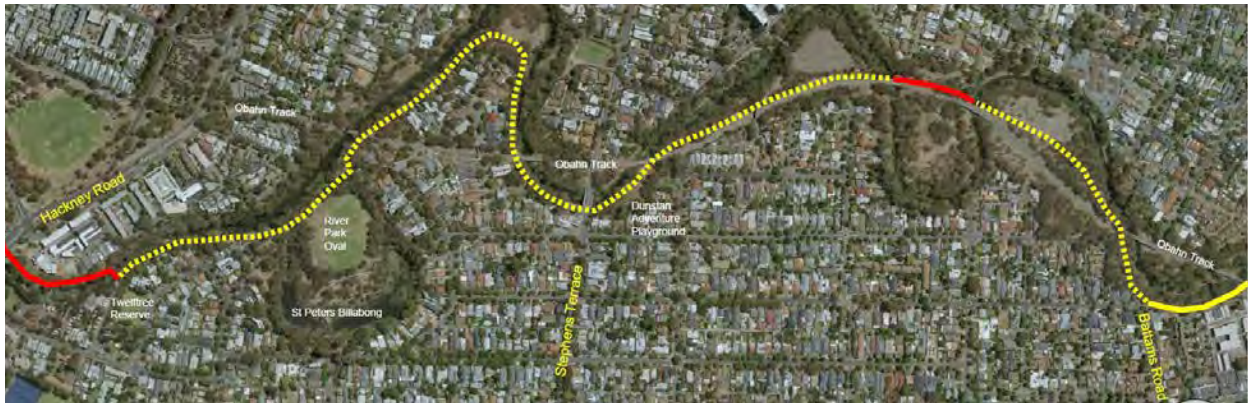
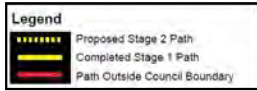
The project seeks to reconstruct the shared path along the River Torrens Linear Park between the intersection of Batts Road/Ninth Avenue, Royston Park to the east and Twelftree Reserve, College Park to the west, while also encompassing a section of the path that passes through Dunstan Adventure Playground. Key elements of the project include:

- ✔ Increasing pedestrian and cyclist capacity
- ✔ Improving safety and accessibility for shared users
- ✔ Encouraging recreation such as cycling, walking and running
- ✔ Enhancing a key South Australian open space network



## Additional Design Information

### Location Plan



### Concept Plan



# Port Willunga North Coast Park Trail

City of Onkaparinga

---

The State Government is committed to investing in open space and public realm across South Australia, by supporting projects lead by local government. The Port Willunga North Coast Park Trail project received funding in the 2020-21 Open Space and Places for People Grant Program, financed through the Planning and Development Fund.

## Cost and Funding Contribution

Contribution Source	Amount (GST exclusive)
Council Contribution <sup>1</sup>	\$2,100,000
Other Contribution <sup>2</sup>	\$0
Grant Contribution <sup>3</sup>	\$2,100,000
<b>Total Project Cost</b>	<b>\$4,200,000</b>

1. Council's contribution is the direct investment toward the project, allocated from the council's budget. This can also include in-kind works where a monetary amount equivalent has been provided.
2. Other contributions can consist of funding support from community groups, as well as external funding from other State and Commonwealth Government grant programs. Additionally, this can include joint partnerships with other councils to achieve regional priorities.
3. Grant contribution is the funding amount provided to council by the Government of South Australia, financed by the Planning and Development Fund.

## Project Duration

This project is to commence from August 2021 with anticipated completion in January 2023.\*

\*Grant recipients are provided 18 months to complete the project. The project program and duration may be subject to change.

## Project Description

The project seeks to deliver a 2.8km trail as part of the Coast Park and formalise an existing well-used informal path to create an attraction for locals and visitors. This part of the trail is in the Port Willunga North segment between the Maslin Unclad Beach car park to Port Willunga foreshore car park. Key elements of the project include:

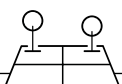
- ✓ Creating an inclusive, safe and convenient accessible pathway to increase visitation by all users
- ✓ Showcasing and protecting the cliffs, as well as culturally and environmentally sensitive sites
- ✓ Providing an improved trail network with recreational access to the Port Willunga coast
- ✓ Providing clear consistent wayfinding with maps and distance markers at key locations along the path alignment
- ✓ Utilising robust materials, street furniture and artwork to discourage vandalism, reduce maintenance requirements and encourage a sense of community ownership

# City of Onkaparinga

## Location Plan



## Concept Plan





# Fremont Park Eastern Upgrade

## Stage 3

City of Playford

---

The State Government is committed to investing in open space and public realm across South Australia, by supporting projects lead by local government. The Fremont Park Eastern Upgrade - Stage 3 project received funding in the 2020-21 Open Space and Places for People Grant Program, financed through the Planning and Development Fund.

### Cost and Funding Contribution

Contribution Source	Amount (GST exclusive)
Council Contribution <sup>1</sup>	\$2,300,132
Other Contribution <sup>2</sup>	\$0
Grant Contribution <sup>3</sup>	\$2,104,921
<b>Total Project Cost</b>	<b>\$4,405,053</b>

1. Council's contribution is the direct investment toward the project, allocated from the council's budget. This can also include in-kind works where a monetary amount equivalent has been provided.
2. Other contributions can consist of funding support from community groups, as well as external funding from other State and Commonwealth Government grant programs. Additionally, this can include joint partnerships with other councils to achieve regional priorities.
3. Grant contribution is the funding amount provided to council by the Government of South Australia, financed by the Planning and Development Fund.

### Project Duration

This project is to commence from July 2021 with anticipated completion in March 2022.\*

\*Grant recipients are provided 18 months to complete the project. The project program and duration may be subject to change.

### Project Description

The project seeks to upgrade and activate an underutilised area of Fremont Park. The upgrade will follow on from earlier upgrades of the park (Stages 1 and 2). Key elements of Stage 3 include:

- ✔ Creating native gardens, tree planting and expanded irrigated lawn area with new pathways, seating, shelters, drinking fountains and bins
- ✔ Creating a dog park with separate small and large sections
- ✔ Coordinating wayfinding and interpretive signage throughout the whole park
- ✔ Improving the sense of safety and accessibility to support use
- ✔ Improving high quality open space and increasing the range of recreational activities to promote active and healthy lifestyles
- ✔ Increasing urban greening and cooling for a sustainable environment

# Additional Design Information

## Location Plan



## Concept Plan



- | KEY |   |    |   |
|-----|---|----|---|
| 01  | Entry arbour  | 09 | Full size basketball court  |
| 02  | Shared use path circuit                                   | 10 | Arbour with integrated play elements  |
| 03  | Creek upgrade   | 11 | Entry plaza with feature trees, deck seating pods, wayfinding signage and relocated Paul Trappe stone sculpture |
| 04  | Main event space and recreation lawns                     | 12 | Proposed carpark with new tree planting   |
| 05  | Existing mounds reshaped with integrated grassed terraces | 13 | New shared use bridge crossing  |
| 06  | Arbour with integrated picnic settings, bbqs              | 14 | New ornamental lake incorporating Mains and ASR Water   |
| 07  | All abilities play space                                  | 15 | Water play (Mains water), nature play and sensory gardens   |
| 08  | Picnic Shelter  | 16 | Central timber deck   |
|     |   | 17 | Secondary event space   |
|     |   | 18 | Existing major tree avenue  |
|     |   | 19 | Recreation lawns  |
|     |   | 20 | Relocated/ upgraded gazebo  |
|     |   | 21 | Native display gardens  |
|     |   | 22 | Off leash dog park with zones for small and large dogs  |
|     |   | 23 | New maintenance depot and toilet block  |
|     |   | 24 | New vegetated swale   |
|     |   | 25 | Natural vegetated basin created in existing depression  |
|     |   | 26 | Proposed raingarden   |
|     |   | 27 | Fitness pod   |
|     |   | 28 | New carpark   |
|     |   | 29 | Existing toilet block   |
|     |   | 30 | Future bike path connection   |
|     |   | 31 | Proposed road crossing over Main North Road   |

- LEGEND**
- Existing trees to be retained
  - Proposed new trees
  - 3 metre shared use path (vehicle grade bitumen)
  - Pedestrian path



# E.A. Carlson Reserve and Playspace Upgrade

City of Port Adelaide Enfield

---

The State Government is committed to investing in open space and public realm across South Australia, by supporting projects lead by local government. The E.A. Carlson Reserve and Playspace Upgrade project received funding in the 2020-21 Open Space and Places for People Grant Program, financed through the Planning and Development Fund.

## Cost and Funding Contribution

Contribution Source	Amount (GST exclusive)
Council Contribution <sup>1</sup>	\$225,000
Other Contribution <sup>2</sup>	\$0
Grant Contribution <sup>3</sup>	\$225,000
<b>Total Project Cost</b>	<b>\$450,000</b>

1. Council's contribution is the direct investment toward the project, allocated from the council's budget. This can also include in-kind works where a monetary amount equivalent has been provided.
2. Other contributions can consist of funding support from community groups, as well as external funding from other State and Commonwealth Government grant programs. Additionally, this can include joint partnerships with other councils to achieve regional priorities.
3. Grant contribution is the funding amount provided to council by the Government of South Australia, financed by the Planning and Development Fund.

## Project Duration

This project is to commence from July 2021 with anticipated completion in March 2022.\*

\*Grant recipients are provided 18 months to complete the project. The project program and duration may be subject to change.

## Project Description

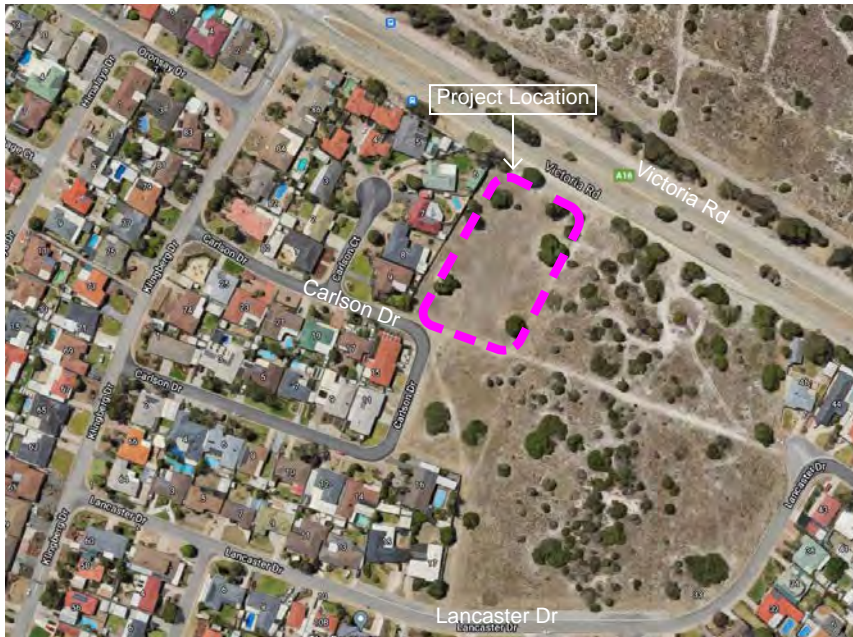
The project seeks to construct reserve facilities at E.A. Carlson Reserve, North Haven. Key elements of the project include:

- ✓ Implementing a playspace, looped path, turfed kick about area, picnic facilities and new trees
- ✓ Understorey landscaping connected to the existing and new adjacent street network
- ✓ Transforming an unused landscape into an attractive inviting recreational facility
- ✓ Providing the existing and fast growing residential community with access to contemporary recreational facilities



## Additional Design Information

### Location Plan



### Concept Plan



Note: Concept design and imagery are for illustrative purposes only.



# Green Trails Program - Little Para River, Salisbury Heights

City of Salisbury

---

The State Government is committed to investing in open space and public realm across South Australia, by supporting projects lead by local government. The Green Trails Program - Little Para River, Salisbury Heights project received funding in the 2020-21 Open Space and Places for People Grant Program, financed through the Planning and Development Fund.

## Cost and Funding Contribution

Contribution Source	Amount (GST exclusive)
Council Contribution <sup>1</sup>	\$500,000
Other Contribution <sup>2</sup>	\$0
Grant Contribution <sup>3</sup>	\$500,000
<b>Total Project Cost</b>	<b>\$1,000,000</b>

1. Council's contribution is the direct investment toward the project, allocated from the council's budget. This can also include in-kind works where a monetary amount equivalent has been provided.
2. Other contributions can consist of funding support from community groups, as well as external funding from other State and Commonwealth Government grant programs. Additionally, this can include joint partnerships with other councils to achieve regional priorities.
3. Grant contribution is the funding amount provided to council by the Government of South Australia, financed by the Planning and Development Fund.

## Project Duration

This project is to commence from July 2021 with anticipated completion in January 2023.\*

\*Grant recipients are provided 18 months to complete the project. The project program and duration may be subject to change.

## Project Description

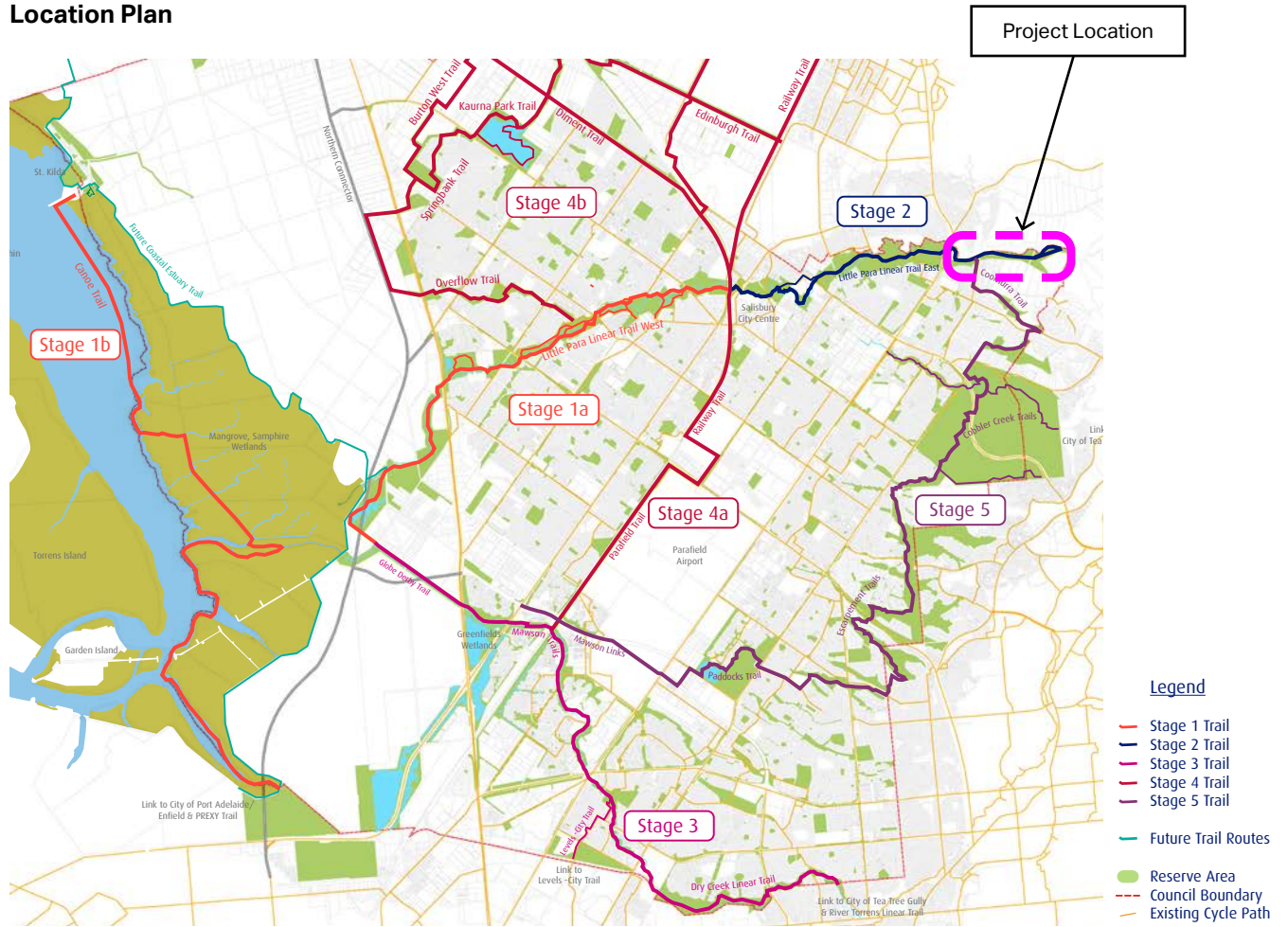
The project seeks to continue the multi-staged council-wide trails program that involves upgrading the existing trail network along the Little Para River and Dry Creek as well as new trails. The project is along the Little Para River (upper) located east of Main North Road. Key elements of the project include:

- ✔ Providing opportunity for recreation and commuter use of the linear open space corridors
- ✔ Improving safety and accessibility between Salisbury Heights and Salisbury Park to the Salisbury City Centre
- ✔ Implementing new furniture and lighting for improved safety
- ✔ Introducing wayfinding signage at strategic points



# Additional Design Information

## Location Plan



## Concept Plan





# Golden Fields Adventure Playspace

City of Tea Tree Gully

---

The State Government is committed to investing in open space and public realm across South Australia, by supporting projects lead by local government. The Golden Fields Adventure Playspace project received funding in the 2020-21 Open Space and Places for People Grant Program, financed through the Planning and Development Fund.

## Cost and Funding Contribution

Contribution Source	Amount (GST exclusive)
Council Contribution <sup>1</sup>	\$750,000
Other Contribution <sup>2</sup>	\$0
Grant Contribution <sup>3</sup>	\$750,000
<b>Total Project Cost</b>	<b>\$1,500,000</b>

1. Council's contribution is the direct investment toward the project, allocated from the council's budget. This can also include in-kind works where a monetary amount equivalent has been provided.
2. Other contributions can consist of funding support from community groups, as well as external funding from other State and Commonwealth Government grant programs. Additionally, this can include joint partnerships with other councils to achieve regional priorities.
3. Grant contribution is the funding amount provided to council by the Government of South Australia, financed by the Planning and Development Fund.

## Project Duration

This project is to commence from July 2021 with anticipated completion in October 2022.\*

\*Grant recipients are provided 18 months to complete the project. The project program and duration may be subject to change.

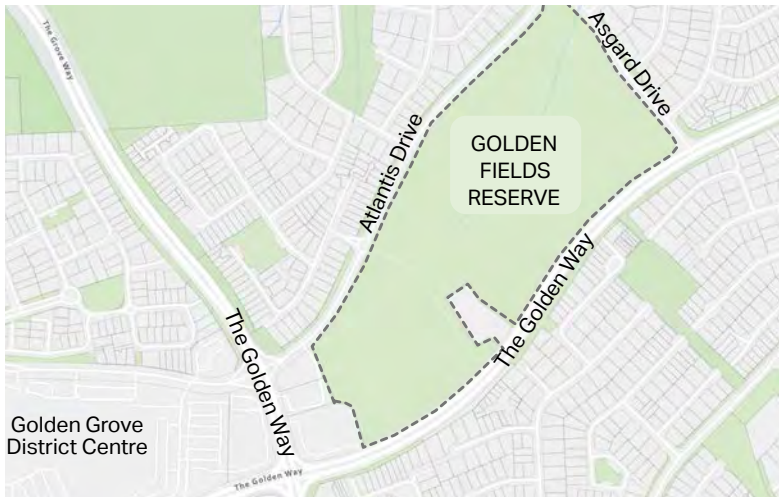
## Project Description

The project seeks to deliver an adventure playspace, which will provide a unique play experience that focuses on the mental and physical wellbeing of younger members of the community. Key elements of the project include:

- ✓ Improving access to the reserve for all ages and abilities, providing accessible connections that are currently limited
- ✓ Implementing initiatives that aid climate change adaptation including reducing urban heat, increasing canopy coverage, increasing biodiversity and addressing stormwater management and treatment
- ✓ Enhancing the biodiversity of the area and incorporating extensive landscaping within the playspace
- ✓ Increasing opportunities for unstructured recreation and community activities, as well as opportunities for social interaction

## Additional Design Information

### Location Plan



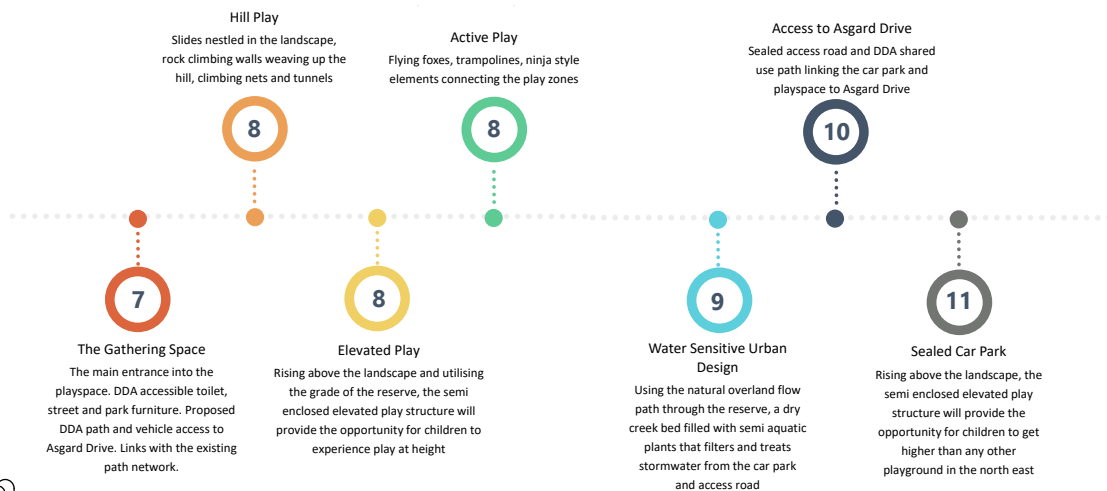
### Concept Plan



The proposed Adventure Playspace seeks to elevate the play experience, providing a unique play opportunities for children and youth in the north east in this regional reserve.



### Legend



# Apex Park Stage 2 Redevelopment

City of West Torrens

---

The State Government is committed to investing in open space and public realm across South Australia, by supporting projects lead by local government. The Apex Park Stage 2 Redevelopment project received funding in the 2020-21 Open Space and Places for People Grant Program, financed through the Planning and Development Fund.

## Cost and Funding Contribution

Contribution Source	Amount (GST exclusive)
Council Contribution <sup>1</sup>	\$1,014,375
Other Contribution <sup>2</sup>	\$0
Grant Contribution <sup>3</sup>	\$1,000,000
<b>Total Project Cost</b>	<b>\$2,014,375</b>

1. Council's contribution is the direct investment toward the project, allocated from the council's budget. This can also include in-kind works where a monetary amount equivalent has been provided.
2. Other contributions can consist of funding support from community groups, as well as external funding from other State and Commonwealth Government grant programs. Additionally, this can include joint partnerships with other councils to achieve regional priorities.
3. Grant contribution is the funding amount provided to council by the Government of South Australia, financed by the Planning and Development Fund.

## Project Duration

This project is to commence from July 2021 with anticipated completion in January 2023.\*

\*Grant recipients are provided 18 months to complete the project. The project program and duration may be subject to change.

## Project Description

The project seeks to improve and build on the functionality, accessibility and safety improvements identified in the Apex Park Masterplan and Stage 1 Redevelopment completed in 2019. The works will benefit the wider community and strengthen the link with the River Torrens Linear Park. Key elements of the project include:

- ✓ Maximising links with the River Torrens Linear Park and the planned upgrade of Breakout Creek Stage 3, supporting a continuous network for pedestrian and cyclists surrounded by a well-designed landscape
- ✓ Providing a diverse range of activities by introducing nature play elements and a bmx track
- ✓ Addressing safety concerns by improving visibility and passive surveillance
- ✓ Removing dense weed species to support long term sustainability of the reserve



# Additional Design Information

## Location Plan



## Concept Plan



# Land Purchase for a Shared Path, Thebarton

City of West Torrens

---

The State Government is committed to investing in open space and public realm across South Australia, by supporting projects lead by local government. The Land Purchase for a Shared Path in Thebarton has received funding in the 2020-21 Open Space and Places for People Grant Program, financed through the Planning and Development Fund.

## Cost and Funding Contribution

Contribution Source	Amount (GST exclusive)
Council Contribution <sup>1</sup>	\$290,000
Other Contribution <sup>2</sup>	\$0
Grant Contribution <sup>3</sup>	\$290,000
<b>Total Project Cost</b>	<b>\$580,000</b>

1. Council's contribution is the direct investment toward the project, allocated from the council's budget. This can also include in-kind works where a monetary amount equivalent has been provided.
2. Other contributions can consist of funding support from community groups, as well as external funding from other State and Commonwealth Government grant programs. Additionally, this can include joint partnerships with other councils to achieve regional priorities.
3. Grant contribution is the funding amount provided to council by the Government of South Australia, financed by the Planning and Development Fund.

## Project Duration

This project is to commence from July 2021 with anticipated completion in January 2022.\*

\*Grant recipients are provided 18 months to complete the project. The project program and duration may be subject to change.

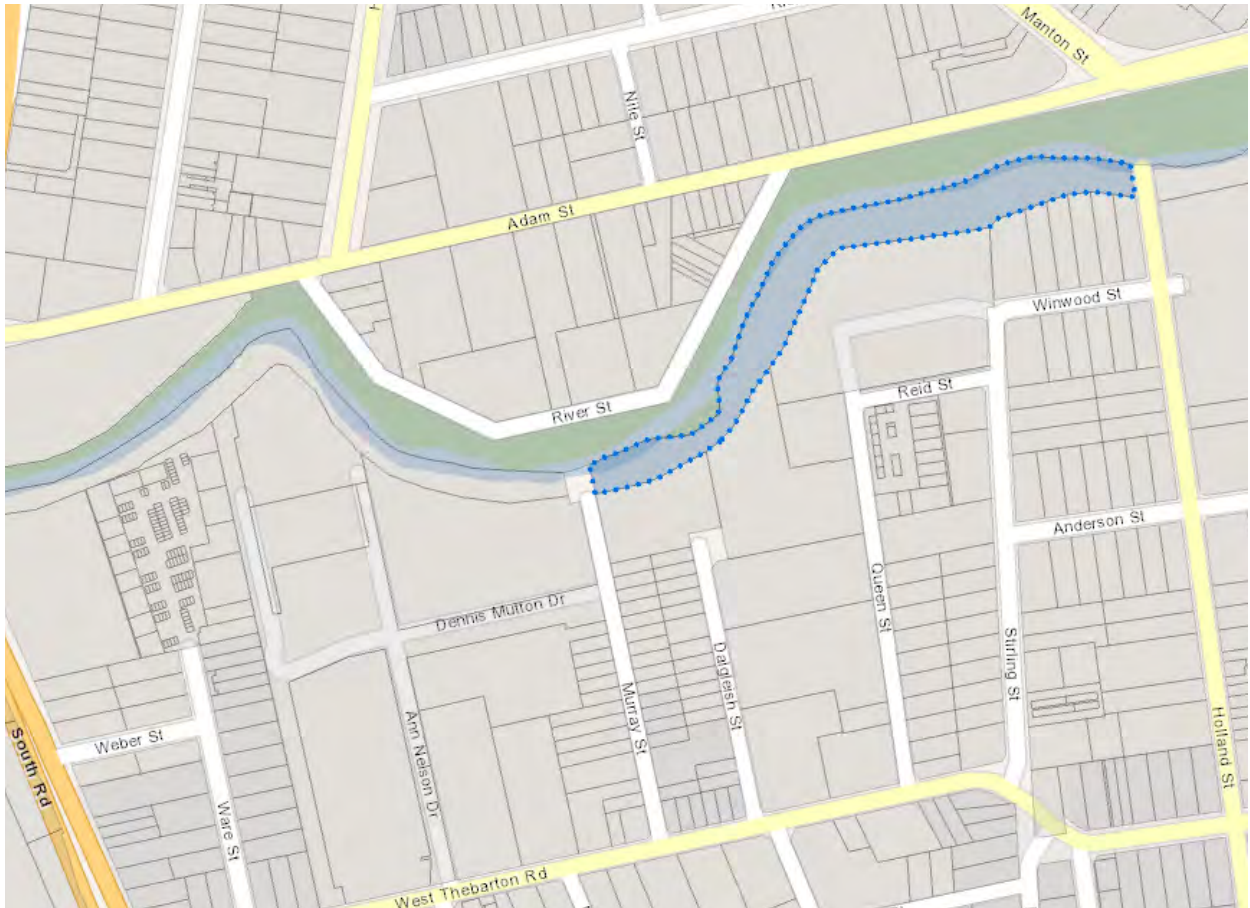
## Project Description

The project includes the land purchase for a corridor adjacent the southern side of the River Torrens in Thebarton to create a shared-use path. The Thebarton precinct is experiencing significant urban revitalisation, including redevelopment of the former University of Adelaide in this area. The land is located within the former Adelaide University site at Thebarton commencing from Holland Street extending approximately 300m west to Queen Street, approximately 739.6m<sup>2</sup> in area. Key elements of the land purchase include:

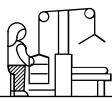
- ✓ Supporting upcoming urban infill and population growth
- ✓ Improving the open space network from the city to Thebarton and surrounding suburbs
- ✓ Supporting a healthy and active community, tourism and economic activity, urban greening
- ✓ Building resilience to climate change and promoting urban greening

# Additional Design Information

## Location Plan



 Land Location





# Queen Square Activation Project

Copper Coast Council

---

The State Government is committed to investing in open space and public realm across South Australia, by supporting projects lead by local government. The Queen Square Activation project received funding in the 2020-21 Open Space and Places for People Grant Program, financed through the Planning and Development Fund.

## Cost and Funding Contribution

Contribution Source	Amount (GST exclusive)
Council Contribution <sup>1</sup>	\$139,475
Other Contribution <sup>2</sup>	\$0
Grant Contribution <sup>3</sup>	\$91,300
<b>Total Project Cost</b>	<b>\$230,775</b>

1. Council's contribution is the direct investment toward the project, allocated from the council's budget. This can also include in-kind works where a monetary amount equivalent has been provided.
2. Other contributions can consist of funding support from community groups, as well as external funding from other State and Commonwealth Government grant programs. Additionally, this can include joint partnerships with other councils to achieve regional priorities.
3. Grant contribution is the funding amount provided to council by the Government of South Australia, financed by the Planning and Development Fund.

## Project Duration

This project is to commence from July 2021 with anticipated completion in January 2022.\*

\*Grant recipients are provided 18 months to complete the project. The project program and duration may be subject to change.

## Project Description

The project seeks to activate an important public place in the heart of Moonta to significantly improve the quality of the green space available to residents and visitors. Key elements of the project include:

- ✓ Revitalising existing established assets, such as shade and lawned areas, public art and heritage elements
- ✓ Introducing accessible paths and handrails, and a new accessible public toilet facility
- ✓ Adding additional shade trees and structures, event spaces for community events, picnic and barbecue facilities, a family friendly play space, reflection garden and wandering path for quiet recreation
- ✓ Addressing community needs by improving accessibility and inclusivity through universal design
- ✓ Enhancing Queen Square as a social hub that supports the recreational and cultural life of Moonta

# Additional Design Information

## Concept Plan

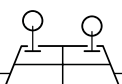


- 01 Existing rotunda with plaza
- 02 Existing bus stop retained
- 03 Relocated fountain
- 04 Existing steps retained, new handrails
- 05 Piano bench relocated
- 06 Ryan's Wombat Burrow - relocated
- 07 Sealed pathway
- 08 Upgraded toilet block
- 09 Drinking fountain/water point
- 10 Shelter with seating
- 11 Tourism information board
- 12 Pine avenue
- 13 Reflection garden with wandering path
- 14 Entry plaza with feature paving and seating
- 15 Themed sculpture play - future works
- 16 Event stage
- 17 Feature planting
- 18 Multifunctional open lawn
- 19 Community feature paving
- 20 Sir Richard Williams Statue
- 21 Performance seating area
- 22 Pioneer Cornish Miners, Cecil Thomas Matthew Memorials - relocated
- Indicative market stall arrangement
- Electrical connection point for markets
- Heritage lighting to pathways

## Visualisation (Artist Impression)



- Retained open lawn space
- Sound shell & stage
- Retained 'Moreton Bay Figs'
- New accessible pathways
- Feature planting
- New feature trees
- New toilet facility
- Sculptural play



# Wallaroo to Moonta Walking and Cycling Shared Path

Copper Coast Council

---

The State Government is committed to investing in open space and public realm across South Australia, by supporting projects lead by local government. The Wallaroo to Moonta Walking and Cycling Shared Path project received funding in the 2020-21 Open Space and Places for People Grant Program, financed through the Planning and Development Fund.

## Cost and Funding Contribution

Contribution Source	Amount (GST exclusive)
Council Contribution <sup>1</sup>	\$607,000
Other Contribution <sup>2</sup>	\$0
Grant Contribution <sup>3</sup>	\$418,000
<b>Total Project Cost</b>	<b>\$1,025,000</b>

1. Council's contribution is the direct investment toward the project, allocated from the council's budget. This can also include in-kind works where a monetary amount equivalent has been provided.
2. Other contributions can consist of funding support from community groups, as well as external funding from other State and Commonwealth Government grant programs. Additionally, this can include joint partnerships with other councils to achieve regional priorities.
3. Grant contribution is the funding amount provided to council by the Government of South Australia, financed by the Planning and Development Fund.

## Project Duration

This project is to commence from July 2021 with anticipated completion in September 2022.\*

\*Grant recipients are provided 18 months to complete the project. The project program and duration may be subject to change.

## Project Description

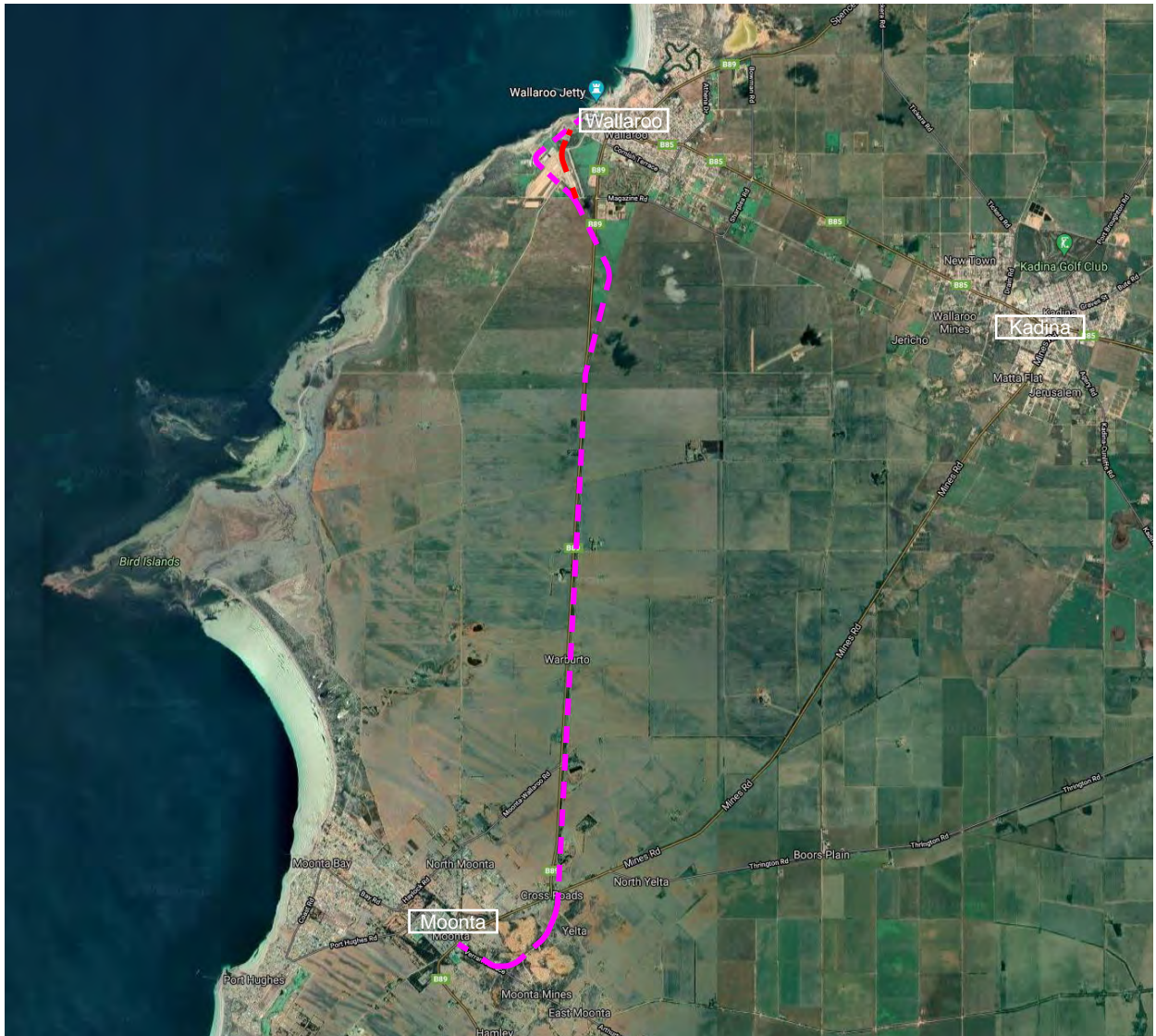
The project seeks to deliver on the community's identified need for improved passive and active recreational infrastructure. The project involves the construction of a continuous off-road 7.5km shared path between Wallaroo and Moonta to connect the coastal towns. The outdoor and adventure facilities seek to increase the community's accessibility to unstructured open space and increase user safety in both towns. Key elements of the project include:

- ✓ Meeting the increasing community need for a connected shared recreational path
- ✓ Improving the quality and safety of the pedestrian environment in the region
- ✓ Providing the community with access to outdoor adventure facilities, to support physical health and wellbeing
- ✓ Increasing access to open space for recreation and enjoyment
- ✓ Creating a new tourism asset for the region



# Additional Design Information

## Location Plan



Legend

- Proposed Route
- Existing Railway Track



# Streaky Bay Youth Precinct

## District Council of Streaky Bay

---

The State Government is committed to investing in open space and public realm across South Australia, by supporting projects lead by local government. The Streaky Bay Youth Precinct project received funding in the 2020-21 Open Space and Places for People Grant Program, financed through the Planning and Development Fund.

## Cost and Funding Contribution

Contribution Source	Amount (GST exclusive)
Council Contribution <sup>1</sup>	\$352,779
Other Contribution <sup>2</sup>	\$65,177
Grant Contribution <sup>3</sup>	\$352,791
<b>Total Project Cost</b>	<b>\$770,747</b>

1. Council's contribution is the direct investment toward the project, allocated from the council's budget. This can also include in-kind works where a monetary amount equivalent has been provided.
2. Other contributions can consist of funding support from community groups, as well as external funding from other State and Commonwealth Government grant programs. Additionally, this can include joint partnerships with other councils to achieve regional priorities.
3. Grant contribution is the funding amount provided to council by the Government of South Australia, financed by the Planning and Development Fund.

## Project Duration

This project is to commence from July 2021 with anticipated completion in January 2023.\*

\*Grant recipients are provided 18 months to complete the project. The project program and duration may be subject to change.

## Project Description

The project seeks to activate and enhance an existing underdeveloped recreational space to promote active and passive opportunities for the community and visitors. The project includes skate bowl upgrades, shelters, picnic settings and barbecue facilities, pump track, recreational paths, nature playground and associated landscaping. Key elements of the project include:

- ✔ Supporting social interaction of younger people in the community
- ✔ Improving and enhancing conservation of the site through tree planting, green spaces and stormwater management
- ✔ Supporting active recreation, improved mental health and wellbeing
- ✔ Providing inclusive contemporary equipment and introducing new leisure opportunities




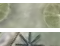


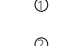


# Additional Design Information

## Location Plan



## Concept Plan



-  EXISTING TREES
-  PROPOSED TREES FOR SHADE & AMENITY
-  PROPOSED TREES FOR SCREENING ALONG EXISTING CARPARK
-  PROPOSED TURF
-  PROPOSED REVEGETATION
-  PROPOSED ART
-  CONCRETE EDGE
-  PROPOSED BENCH SEAT
-  EXISTING PERIMETER PATHS TO BE RETAINED
- ① NEW CONCRETE ACCESS PATHS / HARDSTAND
- ② NEW PERIMETER FENCE WITH MULTIPLE ACCESS POINTS
- ③ PROPOSED SKILLS TRACK
- ④ PROPOSED FLOW TRACK
- ⑤ PROPOSED TOILET
- ⑥ PROPOSED SHELTER WITH PICNIC SETTING & BBQ'S
- ⑦ COMPACTED RUBBLE ACCESS PATH
- ⑧ DIG PIT (SANDPIT)
- ⑨ PLAYSPACE
- ⑩ NATURE 'WILD PLAY TRAIL' WITH LOOSE PARTS FOR BUILDING
- ⑪ SKATE PARK





# Normanville Foreshore Project

District Council of Yankalilla

---

The State Government is committed to investing in open space and public realm across South Australia, by supporting projects lead by local government. The Normanville Foreshore project received funding in the 2020-21 Open Space and Places for People Grant Program, financed through the Planning and Development Fund.

## Cost and Funding Contribution

Contribution Source	Amount (GST exclusive)
Council Contribution <sup>1</sup>	\$2,755,000
Other Contribution <sup>2</sup>	\$2,655,050
Grant Contribution <sup>3</sup>	\$2,100,000
<b>Total Project Cost</b>	<b>\$7,510,050</b>

1. Council's contribution is the direct investment toward the project, allocated from the council's budget. This can also include in-kind works where a monetary amount equivalent has been provided.
2. Other contributions can consist of funding support from community groups, as well as external funding from other State and Commonwealth Government grant programs. Additionally, this can include joint partnerships with other councils to achieve regional priorities.
3. Grant contribution is the funding amount provided to council by the Government of South Australia, financed by the Planning and Development Fund.

## Project Duration

This project is to commence from July 2021 with anticipated completion in January 2023.\*

\*Grant recipients are provided 18 months to complete the project. The project program and duration may be subject to change.

## Project Description

The project seeks to deliver key elements of the Normanville Foreshore and Jetty Caravan Park Draft Masterplan including creation of a new public plaza and nature play area, additional green space, vibrant beach interface and jetty pedestrian mobility access. The project will include the enhancement of community facilities to integrate with the public realm and new plaza. Key elements of the project include:

- ✓ Improving the quality and amenity of the foreshore
- ✓ Encouraging visitation and unstructured recreation
- ✓ Improving the resilience of infrastructure and natural dune systems against coastal erosion and storm events
- ✓ Supporting economic stimulus for communities, businesses and visitors of the precinct

## Additional Design Information

### Location Plan



### Visualisation (Artist Impression)



# Murray Coorong Trail

## Mid Murray Council

---

The State Government is committed to investing in open space and public realm across South Australia, by supporting projects lead by local government. The Murray Coorong Trail project received funding in the 2020-21 Open Space and Places for People Grant Program, financed through the Planning and Development Fund.

## Cost and Funding Contribution

Contribution Source	Amount (GST exclusive)
Council Contribution <sup>1</sup>	\$227,500
Other Contribution <sup>2</sup>	\$0
Grant Contribution <sup>3</sup>	\$205,000
<b>Total Project Cost</b>	<b>\$432,500</b>

1. Council's contribution is the direct investment toward the project, allocated from the council's budget. This can also include in-kind works where a monetary amount equivalent has been provided.
2. Other contributions can consist of funding support from community groups, as well as external funding from other State and Commonwealth Government grant programs. Additionally, this can include joint partnerships with other councils to achieve regional priorities.
3. Grant contribution is the funding amount provided to council by the Government of South Australia, financed by the Planning and Development Fund.

## Project Duration

This project is to commence from July 2021 with anticipated completion in January 2023.\*

\*Grant recipients are provided 18 months to complete the project. The project program and duration may be subject to change.

## Project Description

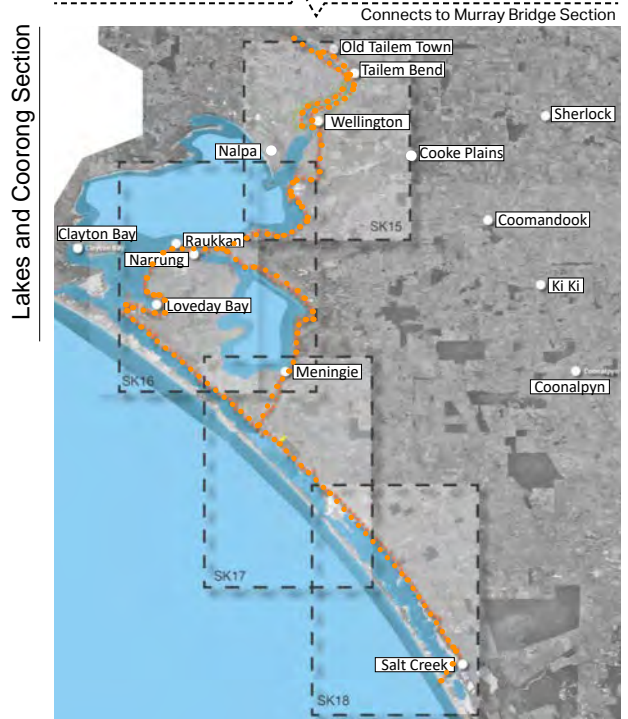
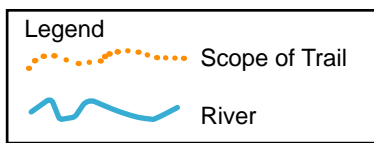
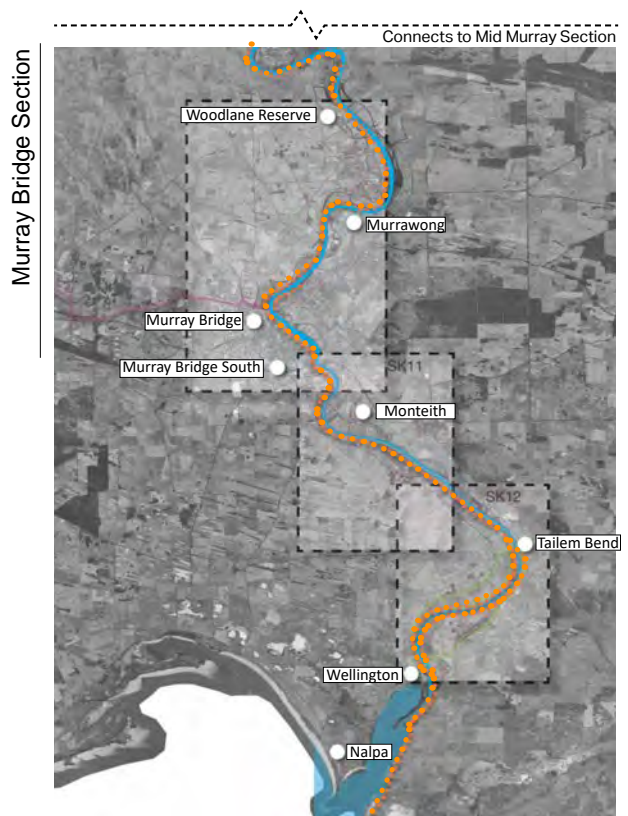
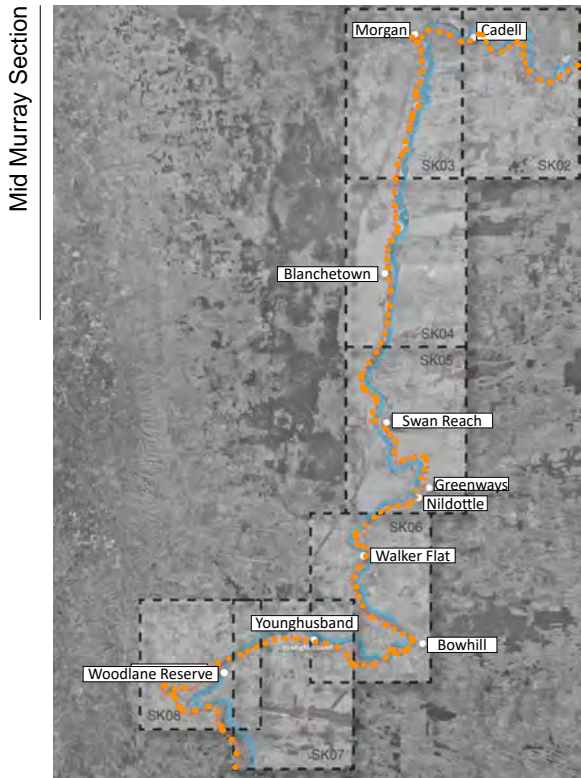
The project seeks to develop a detailed design proposal for the Murray Coorong Trail. The proposed 450km multi-use trail will stretch along the Murray River, Lakes and Coorong waterways from Cadell in the Riverland to Salt Creek in the Coorong National Park. Key elements of the project include:

- ✓ Designing an extended corridor for outdoor recreation to enhance the enjoyment of public open space
- ✓ Designing to include opportunities for the community to engage with nature and participate in recreational social activities
- ✓ Prioritising the connection of the trail with existing multi-use, water-based and driving trails
- ✓ Prioritising the implementation of urban greening and climate change resilience, such as planting shade trees and native greenery whilst supporting biodiversity along the trail



# Additional Design Information

## Location Plans



# Nairne Village Green - Play and Youth Stage 2

Mount Barker District Council

---

The State Government is committed to investing in open space and public realm across South Australia, by supporting projects lead by local government. The Nairne Village Green - Play and Youth - Stage 2 project received funding in the 2020-21 Open Space and Places for People Grant Program, financed through the Planning and Development Fund.

## Cost and Funding Contribution

Contribution Source	Amount (GST exclusive)
Council Contribution <sup>1</sup>	\$316,000
Other Contribution <sup>2</sup>	\$0
Grant Contribution <sup>3</sup>	\$316,000
<b>Total Project Cost</b>	<b>\$632,000</b>

1. Council's contribution is the direct investment toward the project, allocated from the council's budget. This can also include in-kind works where a monetary amount equivalent has been provided.
2. Other contributions can consist of funding support from community groups, as well as external funding from other State and Commonwealth Government grant programs. Additionally, this can include joint partnerships with other councils to achieve regional priorities.
3. Grant contribution is the funding amount provided to council by the Government of South Australia, financed by the Planning and Development Fund.

## Project Duration

This project is to commence from July 2021 with anticipated completion in July 2022.\*

\*Grant recipients are provided 18 months to complete the project. The project program and duration may be subject to change.

## Project Description

The project seeks to transform an underutilised, prominent public space in the centre of Nairne. Key elements of the project include:

- ✔ Implementing new play spaces, play equipment and a skate-able environment
- ✔ Resolving safety issues and interfaces with the interstate rail corridor which passes nearby the site
- ✔ Introducing new accessible public toilets and improved pedestrian access through the site
- ✔ Providing a multi-use space for all users and ages while facilitating increased attendance at public events
- ✔ Promoting urban greening, climate change resilience and improve sustainability

# Additional Design Information

## Location Plan



## Concept Plan



### Key

- ① Mainstreet garden and sculpture park
- ② Central access path
- ③ Mural wall (update and relocate existing murals)
- ④ Flying fox (20m)
- ⑤ Timber rope scramble and nest swing
- ⑥ Central seating area with bike racks
- ⑦ Skate and scooter park
- ⑧ Nature play and mounding
- ⑨ Look out (train viewpoint)
- ⑩ Shelter and bench
- ⑪ Covered access way
- ⑫ New toilet (1 disabled and 4 cubicles)
- ⑬ Accessible car park
- ⑭ Priority parking for CFS (4) rumble strip to entry
- ⑮ Reserve land outside cadastral boundary
- ⑯ New compliant pram ramp and crossing point
- ⑰ Car park with gravel surface (tree sensitive construction)
- ⑱ New post, rail and wire fencing (alternative location for murals)
- ⑲ New compliant pedestrian rail crossing
- ⑳ New post and wire fencing to edge of playspace





# Tanunda Recreation Inclusive Playground

The Barossa Council

---

The State Government is committed to investing in open space and public realm across South Australia, by supporting projects lead by local government. The Tanunda Recreation Inclusive Playground project received funding in the 2020-21 Open Space and Places for People Grant Program, financed through the Planning and Development Fund.

## Cost and Funding Contribution

Contribution Source	Amount (GST exclusive)
Council Contribution <sup>1</sup>	\$482,763
Other Contribution <sup>2</sup>	\$0
Grant Contribution <sup>3</sup>	\$330,221
<b>Total Project Cost</b>	<b>\$812,984</b>

1. Council's contribution is the direct investment toward the project, allocated from the council's budget. This can also include in-kind works where a monetary amount equivalent has been provided.
2. Other contributions can consist of funding support from community groups, as well as external funding from other State and Commonwealth Government grant programs. Additionally, this can include joint partnerships with other councils to achieve regional priorities.
3. Grant contribution is the funding amount provided to council by the Government of South Australia, financed by the Planning and Development Fund.

## Project Duration

This project is to commence from July 2021 with anticipated completion in November 2022.\*

\*Grant recipients are provided 18 months to complete the project. The project program and duration may be subject to change.

## Project Description

The project seeks to deliver an inclusive, inter-generational regional playspace at Tanunda Recreation Park, which is the primary public sport, recreation and community precinct in Tanunda. Key elements of the project include:

- ✔ Adventure play to support the development of motor skills and creativity, including the provision for sand and water elements
- ✔ Youth activities such as outdoor games
- ✔ High quality amenities including a barbecue, drink foundation, seating area and all accessible toilet
- ✔ Retaining natural shade and existing plant species, with complementary new tree plantings, landscaping and pedestrian connections through the playspace
- ✔ Preserving of the existing heritage gates

# Additional Design Information

## Location Plan



## Concept Plan

Legend

1. Heritage gates retained, single gate opening.
2. Paved entrance path
3. Exposed aggregate concrete loop path (1.5m wide)
4. Central access path (1.5m wide)
5. Existing fence retained
6. Existing bitumen pedestrian path
7. Elevated rope tunnel timber post
8. Timber sleeper amphitheater steps
9. Timber platform 1.7m high
10. Rock embankment
11. Timber platform 2m high
12. 2m high stainless steel slide and timber embankment, with rope pull up
13. Timber access steps
14. Rock steppers up mound
15. Sloping garden beds 1:3 max
16. In ground trampolines
17. In ground wheel chair trampoline
18. Timber deck boardwalk
19. Concrete seating walls
20. Timber pod seats
21. Sand pit
22. Raised sand pulley and chute platform
23. Raised timber sand tray
24. Timber deck boardwalk (1.21) and amphitheater steps
25. Raised water spout and 2 raised water troughs with lower level water rill and weir
26. Raised recycled timber edge to sand pit
27. Elevated music play
28. Inclusive spin dish
29. 3 bay swing including strap, basket and harness swings
30. Inclusive wheelchair access carousel
31. Timber basket swing
32. Rock and log edge to garden bed under existing tree
33. Rubber soffit
34. Soffit mulch
35. Turf and turf mound with 1:5 slope
36. Hammocks
37. Outdoor table tennis table
38. 4x4m Shelter and picnic table
39. Foosball table
40. Kegel sculpture parkour
41. Dual cable way
42. Rubber mound for cable way
43. Basketball/netball multi-use court
44. Ball wall/sensory wall
45. Boundary fence
46. Access gates
47. Pedestrian access path from carpark
48. Shared use and accessible car parks
49. Fence trough garden bed
50. Path connection
51. Pedestrian access path from carpark
52. Shared use and accessible car parks
53. 10x4m Shelter with picnic benches
54. Wheelchair accessible BBQ (Single burner)
55. Pedestrian access path
56. New tree and native plantings
57. Screen planting to boundary
58. Toilet
59. Pedestrian crossing



OUT OF SCOPE OF WORKS



# Flinders Ranges Streetscaping Implementation

The Flinders Ranges Council

---

The State Government is committed to investing in open space and public realm across South Australia, by supporting projects lead by local government. The Flinders Ranges Streetscaping Implementation project received funding in the 2020-21 Open Space and Places for People Grant Program, financed through the Planning and Development Fund.

## Cost and Funding Contribution

Contribution Source	Amount (GST exclusive)
Council Contribution <sup>1</sup>	\$584,746
Other Contribution <sup>2</sup>	\$567,049
Grant Contribution <sup>3</sup>	\$584,745
<b>Total Project Cost</b>	<b>\$1,736,540</b>

1. Council's contribution is the direct investment toward the project, allocated from the council's budget. This can also include in-kind works where a monetary amount equivalent has been provided.
2. Other contributions can consist of funding support from community groups, as well as external funding from other State and Commonwealth Government grant programs. Additionally, this can include joint partnerships with other councils to achieve regional priorities.
3. Grant contribution is the funding amount provided to council by the Government of South Australia, financed by the Planning and Development Fund.

## Project Duration

This project is to commence from July 2021 with anticipated completion in January 2023.\*

\*Grant recipients are provided 18 months to complete the project. The project program and duration may be subject to change.

## Project Description

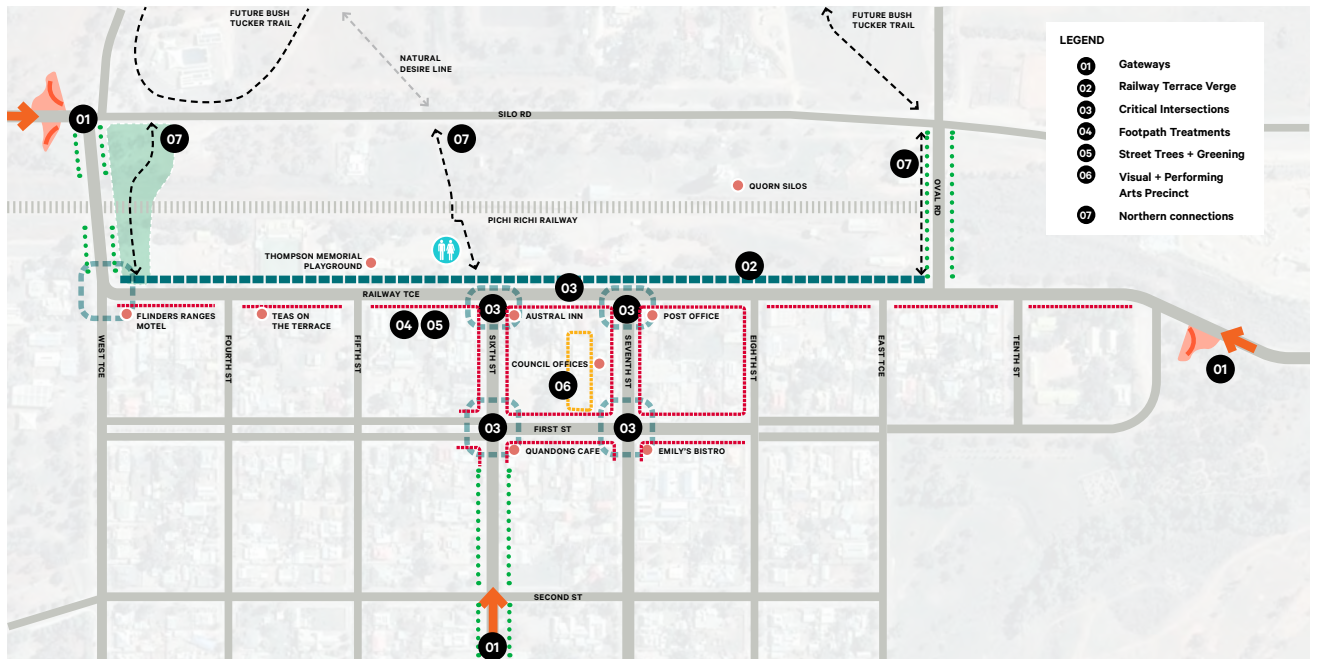
The project seeks to implement staged streetscaping works for the townships of Quorn and Hawker. Key elements of the project include:

- ✓ Reconfiguring and developing key intersections to enhance safe pedestrian access and enabling outdoor dining
- ✓ Implementing markers and signage at the township entryways
- ✓ Enhancing the local and tourist experience offered through improved amenity and functionality of the towns' open space areas and pedestrian networks
- ✓ Stimulating the region's economy by encouraging greater visitor numbers and promoting longer stays

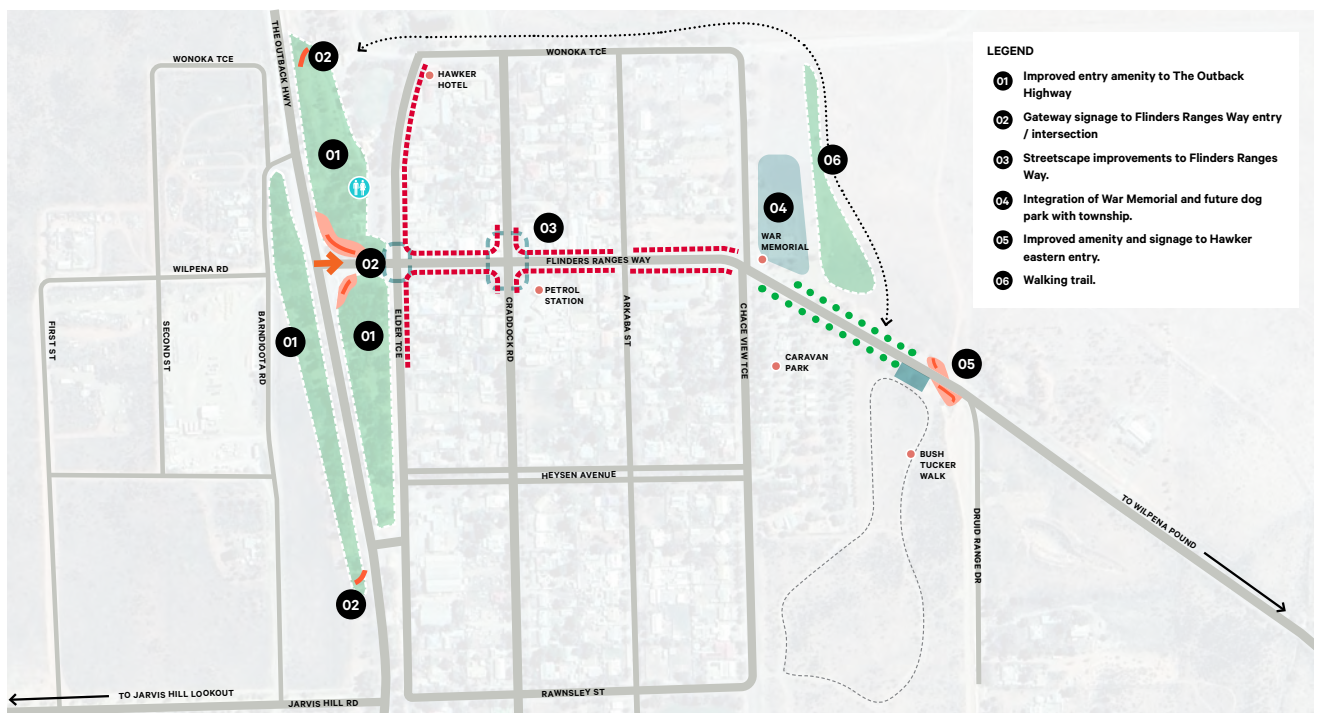


# Additional Design Information

## Concept Plan - Quorn



## Concept Plan - Hawker



# The Quorn Bush Tucker Walk Stage 2

The Flinders Ranges Council

---

The State Government is committed to investing in open space and public realm across South Australia, by supporting projects lead by local government. The Quorn Bush Tucker Walk Stage 2 project received funding in the 2020-21 Open Space and Places for People Grant Program, financed through the Planning and Development Fund.

## Cost and Funding Contribution

Contribution Source	Amount (GST exclusive)
Council Contribution <sup>1</sup>	\$225,234
Other Contribution <sup>2</sup>	\$0
Grant Contribution <sup>3</sup>	\$205,234
<b>Total Project Cost</b>	<b>\$430,468</b>

1. Council's contribution is the direct investment toward the project, allocated from the council's budget. This can also include in-kind works where a monetary amount equivalent has been provided.
2. Other contributions can consist of funding support from community groups, as well as external funding from other State and Commonwealth Government grant programs. Additionally, this can include joint partnerships with other councils to achieve regional priorities.
3. Grant contribution is the funding amount provided to council by the Government of South Australia, financed by the Planning and Development Fund.

## Project Duration

This project is to commence from July 2021 with anticipated completion in September 2022.\*

\*Grant recipients are provided 18 months to complete the project. The project program and duration may be subject to change.

## Project Description

The project seeks to extend the stage 1 Quorn Bush Tucker Walk through a pathway themed on bush foods from the region and their culinary and medicinal uses. Key elements of the project include:

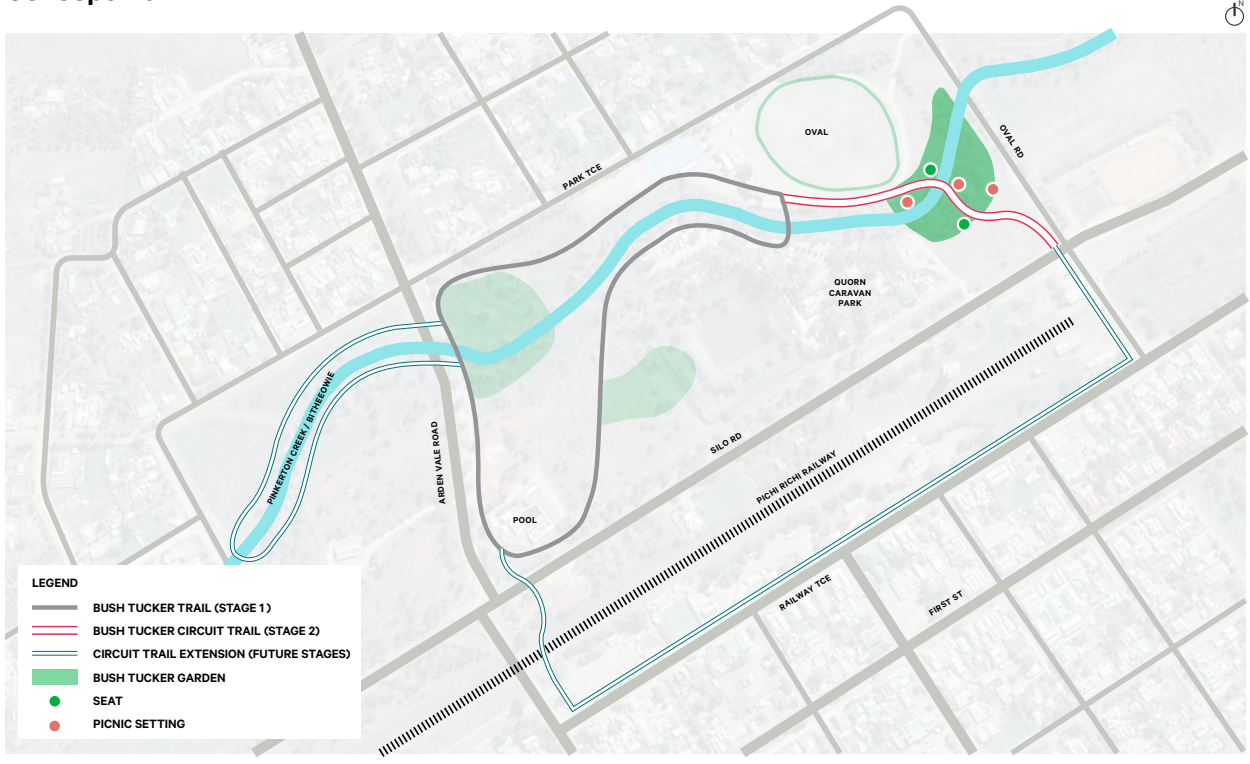
- ✔ Providing opportunity for the community and visitors to learn about bush foods through interpretive signage at various plantings along the way
- ✔ Developing of a 1.25km trail that will become a 5km shared loop trail
- ✔ Installing outdoor exercise equipment along the pathway as well as lighting, seating and a picnic area with a water fountain and barbecue facilities
- ✔ Creating a shared use pathway that will be accessible by people of all ages and levels of mobility
- ✔ Providing a linkage between recreational, social and business precincts through an explorative shared use trail

# Additional Design Information

## Location Plan



## Concept Plan





# Princes Park Community Recreation Hub Stage 1

Town of Gawler

---

The State Government is committed to investing in open space and public realm across South Australia, by supporting projects lead by local government. The Princes Park Community Recreation Hub - Stage 1 project received funding in the 2020-21 Open Space and Places for People Grant Program, financed through the Planning and Development Fund.

## Cost and Funding Contribution

Contribution Source	Amount (GST exclusive)
Council Contribution <sup>1</sup>	\$411,500
Other Contribution <sup>2</sup>	\$0
Grant Contribution <sup>3</sup>	\$356,500
<b>Total Project Cost</b>	<b>\$768,000</b>

1. Council's contribution is the direct investment toward the project, allocated from the council's budget. This can also include in-kind works where a monetary amount equivalent has been provided.
2. Other contributions can consist of funding support from community groups, as well as external funding from other State and Commonwealth Government grant programs. Additionally, this can include joint partnerships with other councils to achieve regional priorities.
3. Grant contribution is the funding amount provided to council by the Government of South Australia, financed by the Planning and Development Fund.

## Project Duration

This project is to commence from July 2021 with anticipated completion in July 2022.\*

\*Grant recipients are provided 18 months to complete the project. The project program and duration may be subject to change.

## Project Description

The project seeks to transform an inactivate area at the Princes Park into a vibrant green open space that will encourage recreation, enhance connectivity to other open space areas and create opportunities for the community to come together. Key elements of the project include:

- ✔ Implementing a community court that complements and connects to the broader Regional Sporting Precinct, nearby public transport and the community
- ✔ Increasing community access to green open space through planting shade trees and drought-tolerant vegetation
- ✔ Promoting health, connection and wellbeing through unstructured recreation opportunities for community use
- ✔ Improving accessibility and safety for residents and visitors of all ages

## Additional Design Information

### Location Plan

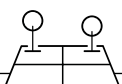


### Concept Plan



#### Future masterplan surrounding stage 1

- ① New entry at top of Nixon Tce
- ② Upgrade / replace and realign Show Society sheds
- ③ Shared use internal road to service sheds
- ④ Relocate Pigeon Club facility
- ⑤ Community court, lawns & shelter
- ⑥ Shared use boulevard from Gawler Oval Station to Sport & Community Centre
- ⑦ Site-wide fence upgrade to consistent & visually permeable type
- ⑧\* Improve precinct service capacity and accessibility (wi-fi, power, water)
- ⑨ Adjusted width of Princes Park to accommodate compliant junior football/cricket oval
- ⑩ Improve entry / accessibility to Princes Park / Showgrounds from shared path



# Hamilton Reserve Rejuvenation

Town of Walkerville

---

The State Government is committed to investing in open space and public realm across South Australia, by supporting projects lead by local government. The Hamilton Reserve Rejuvenation project received funding in the 2020-21 Open Space and Places for People Grant Program, financed through the Planning and Development Fund.

## Cost and Funding Contribution

Contribution Source	Amount (GST exclusive)
Council Contribution <sup>1</sup>	\$351,499
Other Contribution <sup>2</sup>	\$0
Grant Contribution <sup>3</sup>	\$319,825
<b>Total Project Cost</b>	<b>\$671,324</b>

1. Council's contribution is the direct investment toward the project, allocated from the council's budget. This can also include in-kind works where a monetary amount equivalent has been provided.
2. Other contributions can consist of funding support from community groups, as well as external funding from other State and Commonwealth Government grant programs. Additionally, this can include joint partnerships with other councils to achieve regional priorities.
3. Grant contribution is the funding amount provided to council by the Government of South Australia, financed by the Planning and Development Fund.

## Project Duration

This project is to commence from July 2021 with anticipated completion in January 2022.\*

\*Grant recipients are provided 18 months to complete the project. The project program and duration may be subject to change.

## Project Description

The project seeks to upgrade Hamilton Reserve in Vale Park to ensure the park meets the needs of local residents and visitors who use the area on their journey through Linear Park. The project involves a long-term focus on vegetation and environmental improvement, as well as unstructured children's play and recreational facilities linking to the Linear Park Trail. Key elements of the project include:

- ✓ Increasing visitation and providing access to quality green open space to meet the demand amongst the growing population
- ✓ Providing inclusive unstructured recreation opportunities
- ✓ Improving nature conservation and biodiversity of the Linear Park Trail surroundings
- ✓ Identifying natural pedestrian routes and connections



Town of Walkerville

Additional Design Information

Location Plan



Concept Plan



