



Taamanti Nurlurni Artwork by Paul Munaitya Herzich
Felixstow Reserve, City of Norwood Payneham & St Peters
Credit to Aspect Studios and Oxigen
Photo by Dan Schultz

Acknowledgement of Country

The Office for Design and Architecture SA would like to acknowledge Kurna Miyurna as the Traditional Custodians of the Adelaide Plains region where our office is located.

We pay our respect to Kurna Elders - past, present and emerging.

We would also like to acknowledge the Traditional Custodians of the lands and waters across South Australia and recognise their ongoing spiritual connection to Country.

Artwork by Paul Munaitya Herzich, Kurna/Ngarrindjeri Landscape Architect

Felixstow Reserve showcases rich cultural history of Kurna Miyurna (people) as the Traditional Custodians of the Adelaide plains on which the City of Norwood Payneham & St Peters is located. The local waterways, landforms, features and living things continue to be significant to Kurna Miyurna today. Kurna seasonal activities and dreaming stories connect to the Karrawirra Pari/ River Torrens (red gum-forest river) and to Marriyarta Pari/ Fourth Creek (east-country river), which originates in the Mount Lofty Ranges above Morialta Conservation Park and ends its journey at this reserve. Located throughout the reserve, five Kurna cultural markers provide an insight into Kurna beliefs, traditions and culture.

Taamanti Nurlurni

The ibis, taamanti nurlurni (beak has become curved), is a sacred bird to the Kurna Miyurna. The glossy ibis is identified in the story of Tjilbruki, a creation ancestor. The Tjilbruki story teaches people the lore, relationships and how to read the land.



Hamilton Reserve Rejuvenation Project, Town of Walkerville
Credit to LCS Landscapes
Photo by Simon Casson



Open Space Grant Program Summary Sheets

© Government of South Australia. Published March 2023. All rights reserved.

While every reasonable effort has been made to ensure that this document is correct at the time of publication, the Minister for Planning, the State of South Australia, its agencies, instrumentalities, employees and contractors disclaim any and all liability to any person in respect to anything or the consequence of anything done or omitted to be done in reliance upon the whole or any part of this document.

Contents

5	Campbelltown City Council Fourth Creek Morialta Parri Trail Project	25	City of Prospect Irish Harp Reserve Upgrade
7	Campbelltown City Council Paradise Recreation Plaza	27	City of Tea Tree Gully Dry Creek Corridor Stage 2 - Dawson Reserve Open Space Upgrade
9	City of Adelaide Murlawirrapurka/Rymill Park Lake and Surrounds	29	City of Unley Highgate Park
11	City of Charles Sturt Creating a New Local Open Space Reserve in Albert Park	31	City of Victor Harbor Victor Harbor Community, Sport and Recreation Precinct
13	City of Holdfast Bay Seacliff Plaza	33	City of West Torrens Construction of a Shared Path (Stage 1) Thebarton
15	City of Onkaparinga Wearing Street Precinct Redevelopment	35	City of West Torrens Kesmond Reserve Redevelopment
17	City of Playford Mofflin Health and Wellness Reserve Upgrade	37	District Council of Loxton Waikerie Town to River - Loxton Access and Inclusion Project
19	City of Port Adelaide Enfield ESP Rogers Reserve Upgrade	39	Regional Council of Goyder Eudunda Recreation Hub Activation - Children and Young People (Stage 1)
21	City of Port Adelaide Enfield Polonia Reserve Upgrade	41	Town of Gawler Karbeethan Reserve Open Space Expansion
23	City of Port Lincoln Stage 1 Whait Reserve Activation Project		





George Whittle Reserve, City of Prospect
Credit to JPE
Photo by Sam Noonan

Planning and Development Fund

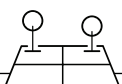
What is it?

The Planning and Development Fund (the Fund) operates under the *Planning, Development and Infrastructure Act 2016* (the Act) and provides the means for open space and public realm investment across South Australia.

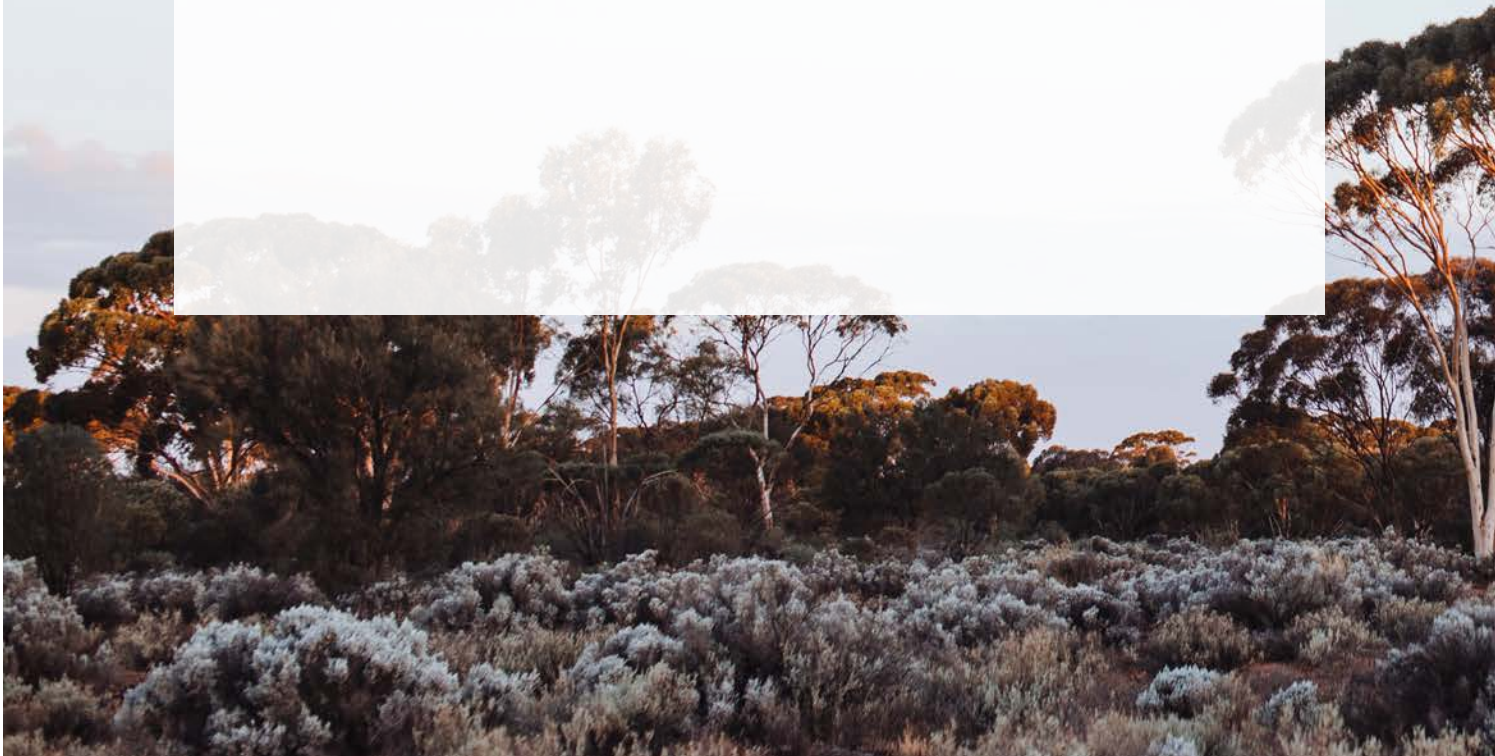
Money paid into the Fund is derived from monetary payments in lieu of open space requirements for development involving the division of land into 20 or fewer allotments and also for strata and community titles. The Fund is expended in line with provisions within the Act and is administered by the Office for Design and Architecture SA within the Department for Trade and Investment.

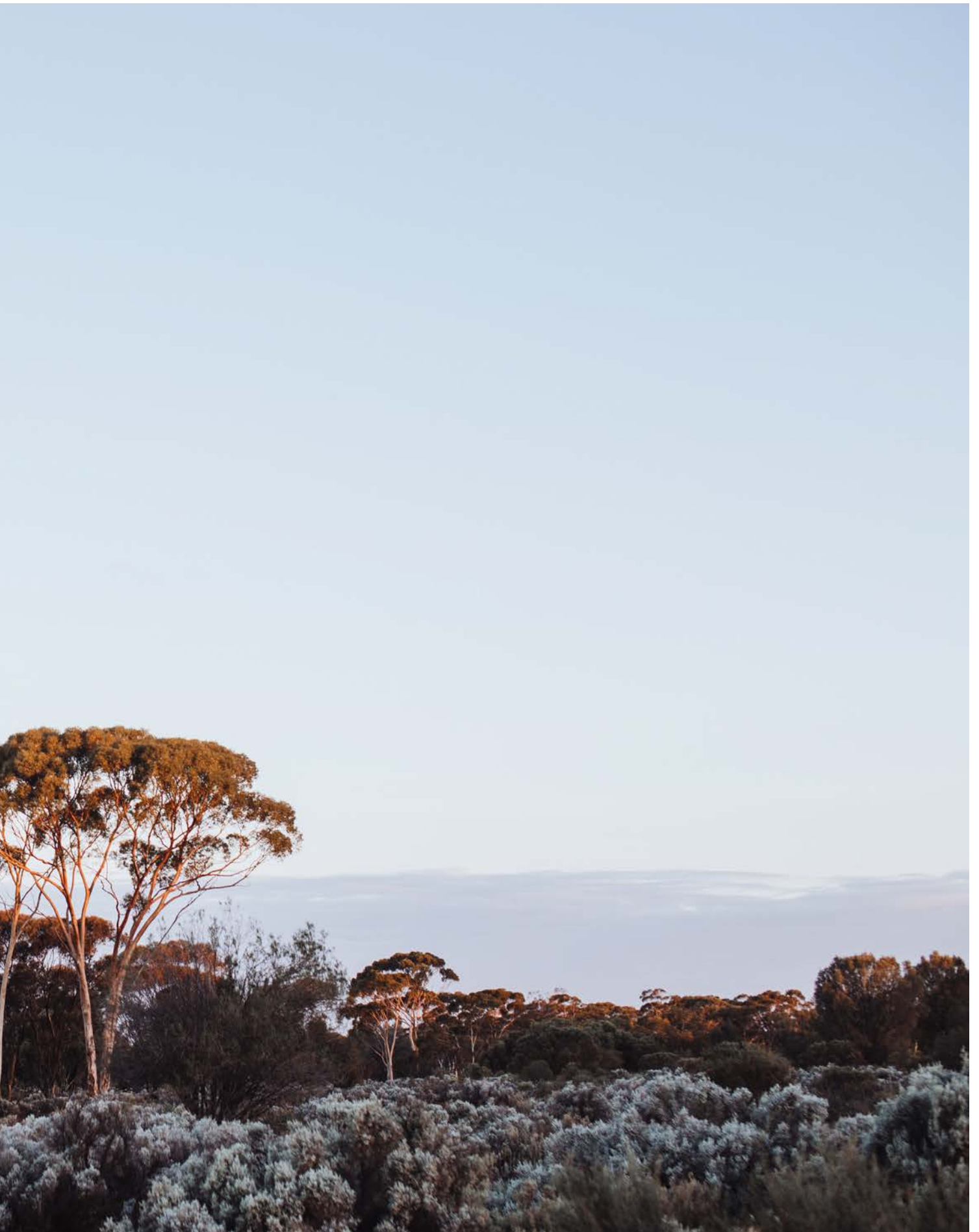
The Fund allows the South Australian Government to adopt a state-wide approach to strategically implement open space and public realm projects in an objective manner. While supporting the Minister for Planning to acquire, manage and develop land for open space, the Fund provides grant funding opportunities for local government through the **Open Space Grant Program** (the Grant Program).

The following summary sheets present projects funded in the 2021-22 Grant Program, including a total of 19 projects with a combined funding amount of \$16.2 million. These projects will be delivered across 16 council areas, focusing on recreational, social and wellbeing outcomes for communities, while strengthening the conservation and enjoyment of our natural environment.



Project Summary Sheets





Fourth Creek Morialta Parri Trail Project

Campbelltown City Council
Kaurna Country

The State Government is committed to investing in open space and public realm across South Australia, by supporting projects led by local government. The Fourth Creek Morialta Parri Trail Project received funding in the 2021-22 Open Space Grant Program, financed through the Planning and Development Fund.

Cost and Funding Contribution

Contribution Source	Amount
Council contribution ¹	\$225,000
Other contribution ²	\$0
Grant contribution ³	\$225,000
Total Project Cost	\$450,000

1. Council's contribution is the direct investment toward the project, allocated from the council's budget. This can also include in-kind works where a monetary amount equivalent has been provided.
2. Other contributions can consist of funding support from community groups, as well as external funding from other State and Commonwealth Government grant programs. Additionally, this can include joint partnerships with other councils to achieve regional priorities.
3. Grant contribution is the funding amount provided to council by the Government of South Australia, financed by the Planning and Development Fund.

Project Duration

This project is to commence from January 2022 with anticipated completion in August 2023.*

*Grant recipients are provided 18 months to complete the project. Changes to the project program and duration are subject to council.

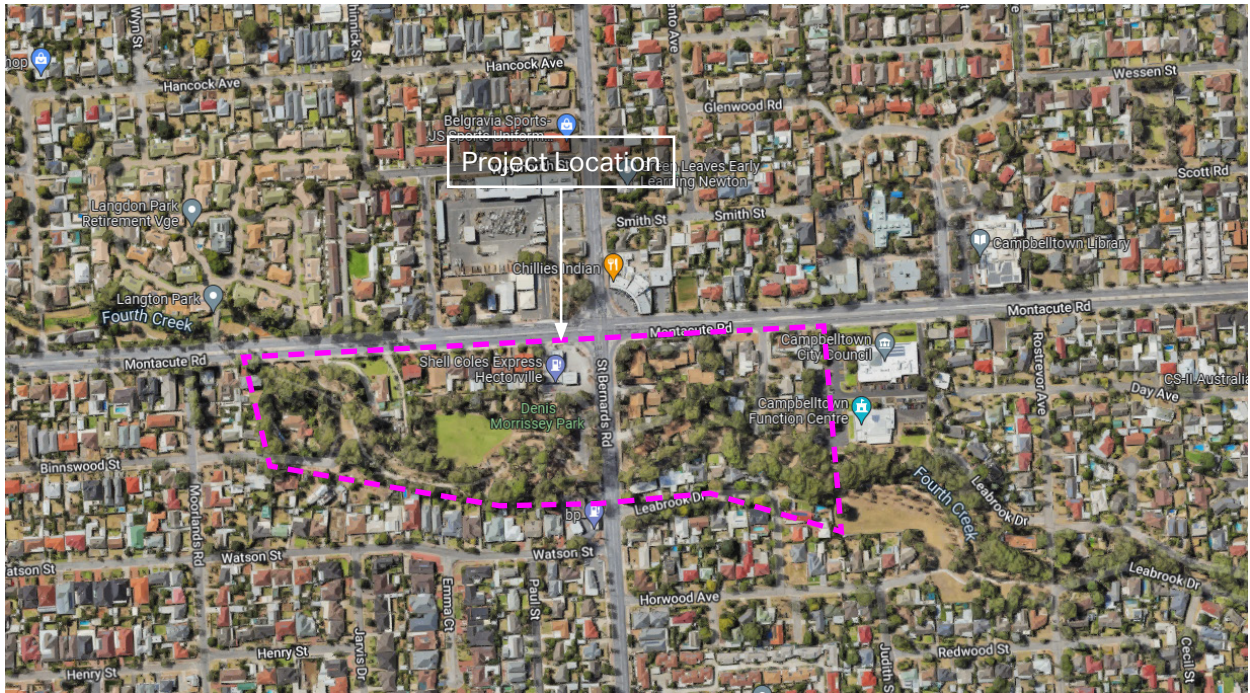
Project Description

The project seeks to improve the connectivity along the Fourth Creek Trail and enhance the biodiversity corridor of the creekline. As part of the project, a new key nodal point along Montacute Road will be developed to provide increased accessible space, allowing for active and passive recreation. The trail will provide access and visibility in an area experiencing significant infill development. Key elements of the project include:

- ✔ Providing new park furniture, wayfinding, drinking fountain, accessible barbeque, shelter, bike repair stations, erosion support works and new native plantings
- ✔ Implementing a key nodal boardwalk point where the trail meets Montacute Road, which incorporates Kaurna heritage into the balustrades and a sculptural wayfinding element
- ✔ Improving accessibility by creating wider trails to ensure DDA-compliance and new trail surfaces, strengthening the connection to nearby playspace at Denis Morrissey Park and the Four Paws Dog Park
- ✔ Improving conservation and biodiversity through new native plantings and permeable paving to protect tree root zones

Additional Design Information

Location Plan



Visualisation (Artist Impression)



Paradise Recreation Plaza

Campbelltown City Council
Kaarua Country

The State Government is committed to investing in open space and public realm across South Australia, by supporting projects led by local government. The Paradise Recreation Plaza project received funding in the 2021-22 Open Space Grant Program, financed through the Planning and Development Fund.

Cost and Funding Contribution

Contribution Source	Amount
Council contribution ¹	\$1,615,750
Other contribution ²	\$0
Grant contribution ³	\$1,520,000
Total Project Cost	\$3,135,750

1. Council's contribution is the direct investment toward the project, allocated from the council's budget. This can also include in-kind works where a monetary amount equivalent has been provided.
2. Other contributions can consist of funding support from community groups, as well as external funding from other State and Commonwealth Government grant programs. Additionally, this can include joint partnerships with other councils to achieve regional priorities.
3. Grant contribution is the funding amount provided to council by the Government of South Australia, financed by the Planning and Development Fund.

Project Duration

This project is to commence from March 2022 with anticipated completion in June 2023.*

*Grant recipients are provided 18 months to complete the project. Changes to the project program and duration are subject to council.

Project Description

The project seeks to develop a new regional level reserve called the Paradise Recreation Plaza, which will replace the existing skate park. The vision for the proposed Paradise Recreation Plaza is to provide a safe, accessible and functional recreation destination. The reserve will provide for play, bike/BMX and passive recreation facilities for the wider community. Key elements of the project include:

- ✓ Developing recreation opportunities for skating, BMX, parkour, ninja adventure, play and sports
- ✓ Implementing connections and access points to link elements of the Recreation Plaza to key nodes on the Karrawirra Parri/River Torrens Linear Park footpath network
- ✓ Creating a dynamic and activated destination with connections to the natural landscape setting offering recreational and social experiences for the community
- ✓ Constructing adult change facilities and accessible pathways

Murlawirrapurka/Rymill Park Lake and Surrounds

City of Adelaide
Karna Country

The State Government is committed to investing in open space and public realm across South Australia, by supporting projects led by local government. The Murlawirrapurka/Rymill Park Lake and Surrounds project received funding in the 2021-22 Open Space Grant Program, financed through the Planning and Development Fund. The project was supported as a strategic investment.

Cost and Funding Contribution

Contribution Source	Amount
Council contribution ¹	\$2,581,000
Other contribution ²	\$0
Grant contribution ³	\$2,431,297
Total Project Cost	\$5,012,297

1. Council's contribution is the direct investment toward the project, allocated from the council's budget. This can also include in-kind works where a monetary amount equivalent has been provided.
2. Other contributions can consist of funding support from community groups, as well as external funding from other State and Commonwealth Government grant programs. Additionally, this can include joint partnerships with other councils to achieve regional priorities.
3. Grant contribution is the funding amount provided to council by the Government of South Australia, financed by the Planning and Development Fund.

Project Duration

This project is to commence from March 2022 with anticipated completion in August 2023.*

*Grant recipients are provided 18 months to complete the project. Changes to the project program and duration are subject to council.

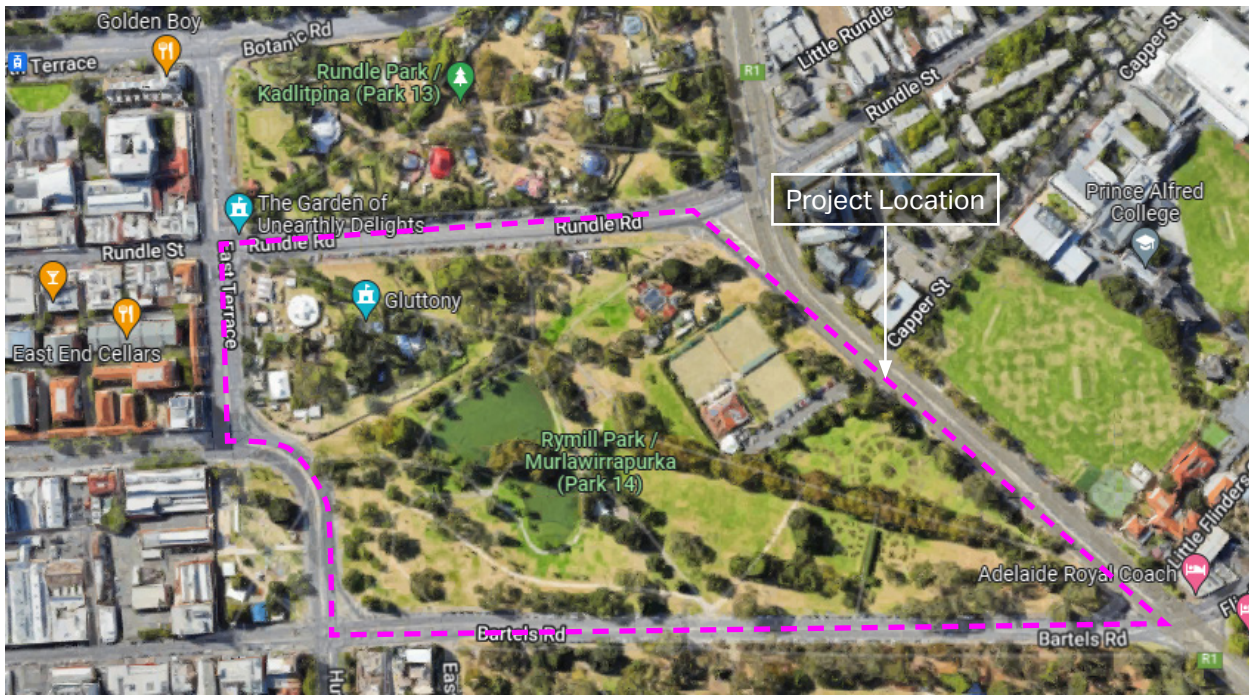
Project Description

The project seeks to upgrade the Murlawirrapurka/Rymill Park Lake and surrounding infrastructure and amenities to provide an upgraded green open space for the growing residential and worker populations in the city and inner eastern suburbs. The upgrade will revitalise the park's lake and introduce environmental enhancement, water quality improvement, biodiversity and sustainable outcomes. The park's attraction and function will be maximised to support artistic and cultural events. Key elements of the project include:

- ✓ Enhancing the experience of the lake walk by creating an edge with paving, planting and furniture
- ✓ Supporting a premium event space for the city in warm seasons while also offering a broad range of recreational opportunities
- ✓ Transforming the lake environment by creating grassed terraces for informal seating and incorporating a deck on the island with increased tree plantings
- ✓ Creating a link from the lake to the Quentin Kenihan Inclusive Playspace

Additional Design Information

Location Plan



Concept Plan



Creating a New Local Open Space Reserve in Albert Park

City of Charles Sturt
Kairua Country

The State Government is committed to investing in open space and public realm across South Australia, by supporting projects led by local government. The Creating a New Local Open Space Reserve in Albert Park project received funding in the 2021-22 Open Space Grant Program, financed through the Planning and Development Fund.

Cost and Funding Contribution

Contribution Source	Amount
Council contribution ¹	\$1,000,000
Other contribution ²	\$1,000,000
Grant contribution ³	\$970,000
Total Project Cost	\$2,970,000

1. Council's contribution is the direct investment toward the project, allocated from the council's budget. This can also include in-kind works where a monetary amount equivalent has been provided.
2. Other contributions can consist of funding support from community groups, as well as external funding from other State and Commonwealth Government grant programs. Additionally, this can include joint partnerships with other councils to achieve regional priorities.
3. Grant contribution is the funding amount provided to council by the Government of South Australia, financed by the Planning and Development Fund.

Project Duration

This project is to commence from February 2022 with anticipated completion in July 2023.*

*Grant recipients are provided 18 months to complete the project. Changes to the project program and duration are subject to council.

Project Description

The project seeks to acquire land to create a new local reserve in Albert Park for the wider community. This project forms a key element of a larger innovative liveability strategy by Council, to integrate infrastructure and development across the Council area. The new reserve will be developed to include active and passive recreation opportunities for children and adults. Key elements of the project include:

- ✓ Purchasing land for the future development of a new reserve
- ✓ Purchasing land for the future creation of structured and unstructured open spaces to support community activities

Additional Design Information

Location Plan



Seacliff Plaza

City of Holdfast Bay
Kaurua Country

The State Government is committed to investing in open space and public realm across South Australia, by supporting projects led by local government. The Seacliff Plaza project received funding in the 2021-22 Open Space Grant Program, financed through the Planning and Development Fund.

Cost and Funding Contribution

Contribution Source	Amount
Council contribution ¹	\$1,148,885
Other contribution ²	\$0
Grant contribution ³	\$1,000,000
Total Project Cost	\$2,148,885

1. Council's contribution is the direct investment toward the project, allocated from the council's budget. This can also include in-kind works where a monetary amount equivalent has been provided.
2. Other contributions can consist of funding support from community groups, as well as external funding from other State and Commonwealth Government grant programs. Additionally, this can include joint partnerships with other councils to achieve regional priorities.
3. Grant contribution is the funding amount provided to council by the Government of South Australia, financed by the Planning and Development Fund.

Project Duration

This project is to commence from February 2022 with anticipated completion in August 2023.*

*Grant recipients are provided 18 months to complete the project. Changes to the project program and duration are subject to council.

Project Description

The multi-staged project seeks to provide new infrastructure to reimagine the foreshore as a destination space for day and night time activities. As part of the project the existing infrastructure will be replaced to deliver a central plaza, a new public amenities building and increased connectivity. Stage 1 includes the replacement of the existing toilets and improvement to footpaths creating an accessible space. Future stages of the project will see the delivery of the remaining plaza and activation programs. Key elements of the project include:

- ✓ Creating accessible shared paths to support the growing numbers of pedestrians and cyclists
- ✓ Developing a new amenity building that will include change rooms, outdoor showers, lockers, accessible and gender-neutral toilets to support longer visits
- ✓ Implementing robust materiality to promote longevity
- ✓ Revitalising the plaza to support recreational and leisure activities in the community

Additional Design Information

Location Plan



Concept Plan



Visualisation (Artist Impression)



Wearing Street Precinct Redevelopment

City of Onkaparinga
Kaarua Country

The State Government is committed to investing in open space and public realm across South Australia, by supporting projects led by local government. The Wearing Street Precinct Redevelopment project received funding in the 2021-22 Open Space Grant Program, financed through the Planning and Development Fund.

Cost and Funding Contribution

Contribution Source	Amount
Council contribution ¹	\$1,650,000
Other contribution ²	\$0
Grant contribution ³	\$2,130,000
Total Project Cost	\$3,780,000

1. Council's contribution is the direct investment toward the project, allocated from the council's budget. This can also include in-kind works where a monetary amount equivalent has been provided.
2. Other contributions can consist of funding support from community groups, as well as external funding from other State and Commonwealth Government grant programs. Additionally, this can include joint partnerships with other councils to achieve regional priorities.
3. Grant contribution is the funding amount provided to council by the Government of South Australia, financed by the Planning and Development Fund.

Project Duration

This project is to commence from February 2022 with anticipated completion in October 2023.*

*Grant recipients are provided 18 months to complete the project. Changes to the project program and duration are subject to council.

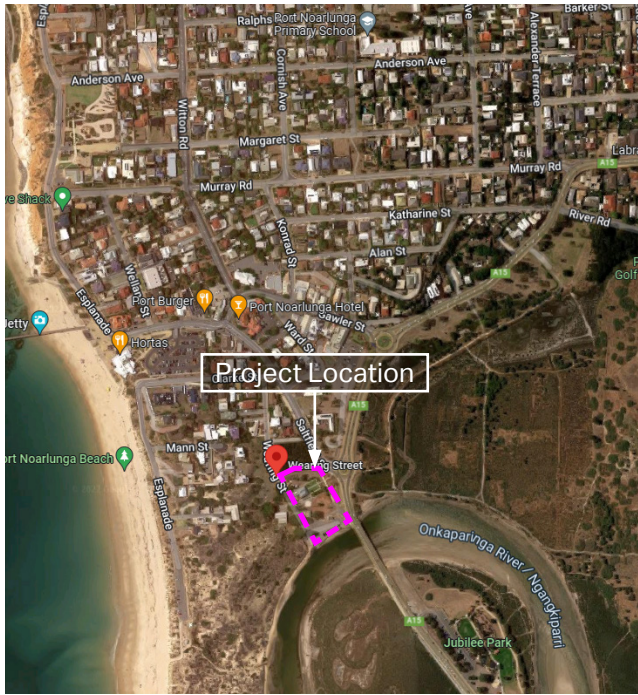
Project Description

The project seeks to revitalise the historic riverbank area located on Wearing Street in Port Noarlunga to meet current and future community needs. The Wearing Street Precinct Redevelopment is a node in the State Governments' Adelaide Metropolitan Coast Park Planning Strategy. The project seeks to deliver a placemaking destination by rejuvenating infrastructure in the public realm to support aquatic and arts user group's activities and events. Key elements of the project include:

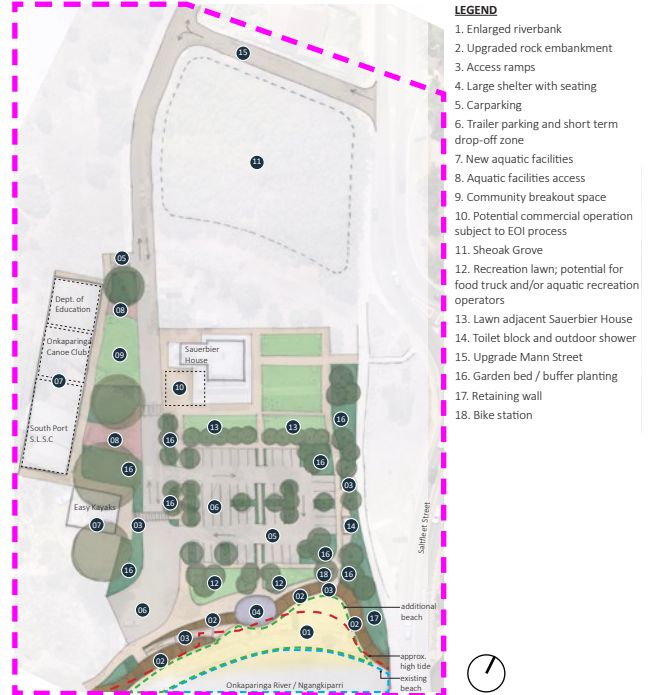
- ✓ Upgrading the riverbank public realm by providing a viewing platform, landscaping, seating, lighting, public toilet with shower facilities, wayfinding signage and public art
- ✓ Implementing a new repositioned revetment wall including a DDA access ramp creating a safer beach launch area
- ✓ Maximising linkages to the coastal estuary, Sauerbier House Arts Centre, riverbank, trails, jetty, beaches and Jubilee Park playground, to promote community connection
- ✓ Creating a revitalised destination for multiple land based unstructured recreation activities where families can share the natural setting

Additional Design Information

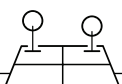
Location Plan



Concept Plan



Visualisation (Artist Impression)



Mofflin Health and Wellness Reserve Upgrade

City of Playford
Kaarua Country

The State Government is committed to investing in open space and public realm across South Australia, by supporting projects led by local government. The Mofflin Health and Wellness Reserve Upgrade project received funding in the 2021-22 Open Space Grant Program, financed through the Planning and Development Fund.

Cost and Funding Contribution

Contribution Source	Amount
Council contribution ¹	\$2,500,213
Other contribution ²	\$0
Grant contribution ³	\$2,029,789
Total Project Cost	\$4,530,002

1. Council's contribution is the direct investment toward the project, allocated from the council's budget. This can also include in-kind works where a monetary amount equivalent has been provided.
2. Other contributions can consist of funding support from community groups, as well as external funding from other State and Commonwealth Government grant programs. Additionally, this can include joint partnerships with other councils to achieve regional priorities.
3. Grant contribution is the funding amount provided to council by the Government of South Australia, financed by the Planning and Development Fund.

Project Duration

This project is to commence from February 2022 with anticipated completion in August 2023.*

*Grant recipients are provided 18 months to complete the project. Changes to the project program and duration are subject to council.

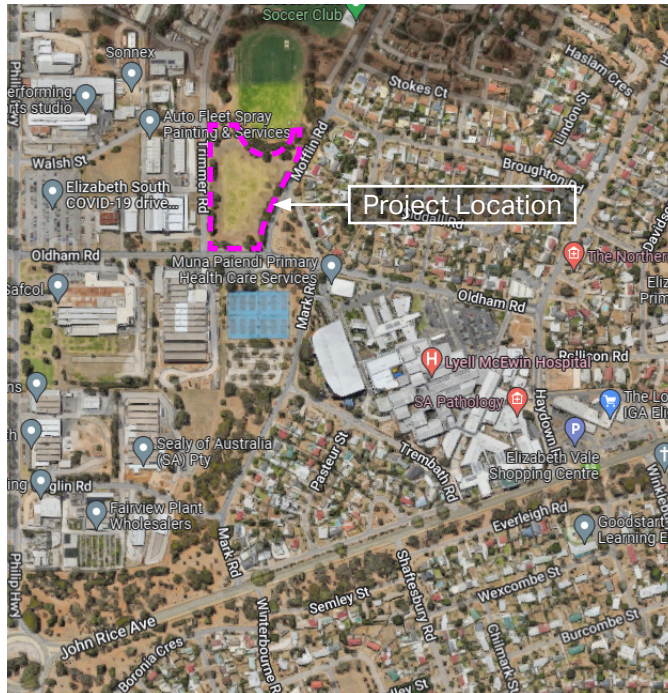
Project Description

The project seeks to upgrade the Mofflin Health and Wellness Reserve into an open space that encourages physical activity, rest and recuperation. The proposed works seek to complement the adjacent Lyell McEwin Hospital and allied health services, as well as providing a destination park and recreation facilities to service the immediate and wider community. Key elements of the project include:

- ✔ Promoting and supporting health and wellness to complement the services provided at Lyell McEwin Hospital
- ✔ Creating access to unstructured recreation facilities within a vacant, underutilised space to service a high population of residents living within the community
- ✔ Providing a space for people of all ages to participate in fitness, rest and recuperation, and strengthen the social connections amongst workers in the area, visitors of health, local residents and the wider community
- ✔ Implementing unstructured facilities including a loop track, all-abilities play equipment, feature playspace, fitness node, seating and barbeque areas, therapeutic sensory garden, quiet seating areas, grassed areas and tree planting

Additional Design Information

Location Plan



Concept Plan



Visualisation (Artist Impression)



ESP Rogers Reserve Upgrade

City of Port Adelaide Enfield
Kaurna Country

The State Government is committed to investing in open space and public realm across South Australia, by supporting projects led by local government. The ESP Rogers Reserve Upgrade project received funding in the 2021-22 Open Space Grant Program, financed through the Planning and Development Fund.

Cost and Funding Contribution

Contribution Source	Amount
Council contribution ¹	\$180,000
Other contribution ²	\$0
Grant contribution ³	\$180,000
Total Project Cost	\$360,000

1. Council's contribution is the direct investment toward the project, allocated from the council's budget. This can also include in-kind works where a monetary amount equivalent has been provided.
2. Other contributions can consist of funding support from community groups, as well as external funding from other State and Commonwealth Government grant programs. Additionally, this can include joint partnerships with other councils to achieve regional priorities.
3. Grant contribution is the funding amount provided to council by the Government of South Australia, financed by the Planning and Development Fund.

Project Duration

This project is to commence from February 2022 with anticipated completion in December 2022.*

*Grant recipients are provided 18 months to complete the project. Changes to the project program and duration are subject to council.

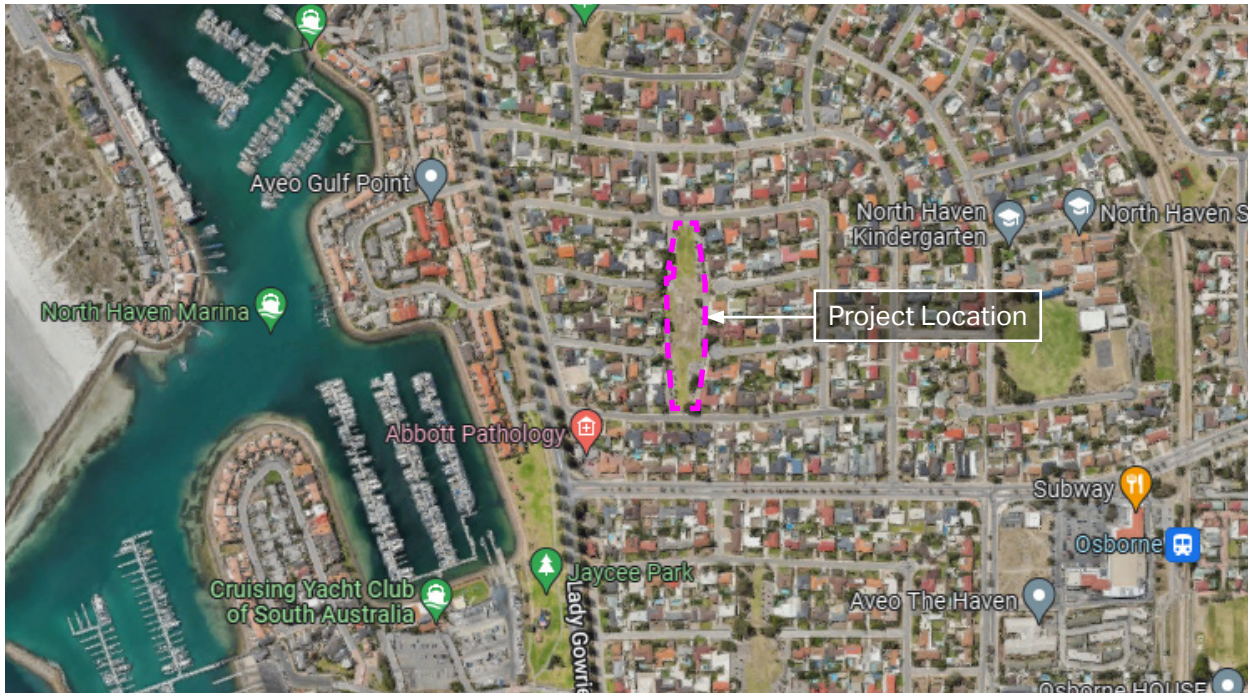
Project Description

The project seeks to develop and revitalise the ESP Rogers Reserve as recreational open space. The proposed development will feature a playspace with integrated nature play elements, basketball and netball courts. A pathway network within the reserve will strengthen connections to adjacent streets as well as a turf area and picnic facilities surrounded by new landscaping. Key elements of the project include:

- ✓ Improving the presentation of recreational assets for the growing demographic and to provide accessible open space for community use
- ✓ Responding to the needs of the local community by maximising play and leisure opportunities within a natural environment
- ✓ Supporting health, wellbeing and community connection by providing opportunities to connect with nature

Additional Design Information

Location Plan



Concept Plan



LEGEND

	EXISTING TREES FORMATIVE PRUNING AS REQUIRED		PROPOSED NETBALL AND BASKETBALL HALFCOURT
	PROPOSED NEW TREES		PROPOSED BASKET SWING
	PROPOSED ADDITIONAL INFILL PLANTING		PROPOSED MULTIPPLY SLIDE STRUCTURE
	EXISTING TURFED RESERVE TO BE RETAINED		PROPOSED NET STRUCTURE
	PROPOSED CONCRETE PATH		PROPOSED ROCKER
	PROPOSED RUBBER SOFTFALL		PROPOSED BENCH SEAT
	PROPOSED ORGANIC SOFTFALL		PROPOSED STEPPING LOGS + ROCKS
	PROPOSED CONCRETE EDGE		PROPOSED NEW BIN BY COPAE
			PROPOSED NEW DRINKING FOUNTAIN
			EXISTING LIGHTING TO BE RETAINED

PLANT SCHEDULE

AB	SPECIES	NAME
TREES		
Ca	Cupressopsis antarcticaoides	Tuderno
Cm	Corymbia maculata	Spotted Gum
El	Eucalyptus leucocylon, leucocylon	SA Blue Gum
Pc	Potamochloa chinensis	Chinese Potamocho
Ma	Melia azedarach 'Elite'	White Cedar
PLANTS		
Cr	Carpobrotus rossii	Native Pigface
Gg	Grewia obtusifolia 'Gin Gin Gem'	Gin Gin Gem
Gp	Gopodia ovata prostrata	Goodenia
Mi	Mycoporum insulare prostrata	Coastal Boobialla



Polonia Reserve Upgrade

City of Port Adelaide Enfield
Kaurna Country

The State Government is committed to investing in open space and public realm across South Australia, by supporting projects led by local government. The Polonia Reserve Upgrade project received funding in the 2021-22 Open Space Grant Program, financed through the Planning and Development Fund.

Cost and Funding Contribution

Contribution Source	Amount
Council contribution ¹	\$700,000
Other contribution ²	\$0
Grant contribution ³	\$700,000
Total Project Cost	\$1,400,000

1. Council's contribution is the direct investment toward the project, allocated from the council's budget. This can also include in-kind works where a monetary amount equivalent has been provided.
2. Other contributions can consist of funding support from community groups, as well as external funding from other State and Commonwealth Government grant programs. Additionally, this can include joint partnerships with other councils to achieve regional priorities.
3. Grant contribution is the funding amount provided to council by the Government of South Australia, financed by the Planning and Development Fund.

Project Duration

This project is to commence from January 2022 with anticipated completion in August 2023.*

*Grant recipients are provided 18 months to complete the project. Changes to the project program and duration are subject to council.

Project Description

The project seeks to redevelop an unused soccer pitch previously known as the Croydon Kings Football Club. The development seeks to create a new play space, shade sails, turfed kick about area, a nature play area and landscaping to enhance the public amenity. Key elements of the project include:

- ✓ Preserving social connection through the development of themed landscapes that reflect the history of the site
- ✓ Promoting unstructured recreation opportunities through native play spaces, as well as turfed open space for fitness
- ✓ Improving the accessibility of the open space while promoting a visual connection from a major public transport route to the reserve, which will extend its use to a range of users
- ✓ Supporting community social interaction and connectivity

Additional Design Information

Location Plan



Concept Plan



LEGEND	
	SITE BOUNDARY
	EXISTING TREES
	NEW TREES
	EXISTING PLANTING
	AMENITY PLANTING
	WOODY MEADOW PLANTING
	WSUD PLANTING AND RAIN GARDENS
	DETENTION BASIN (680m³ STORAGE)
	IRRIGATED TURF AND KICK ABOUT AREA
	DRY LAND TURF
	NEW CONCRETE PATH WITH MIN 1.5m WIDG
	COMPACTED RUBBLE
	BITUMEN LEARN TO RIDE TRACK
	ORGANIC MULCH
	SOFTFALL MULCH
	RUBBER SOFTFALL
	3 ON 3 BASKETBALL COURT
	BENCH SEAT
	CONCRETE SEATING WALL
	PICNIC SETTING
	SEATING ROCKS
	DOUBLE BURNER BBQ
	BN (DUAL GENERAL WASTE / RECYCLING)
	DRINK FOUNTAIN
	1 CUSTOM CLIMBING DOMES WITH ROPE BRIDGE AND SLIDES
	2 MULTI WAY SWING WITH TODDLER SEAT AND ALL ABILITIES SEAT
	3 ACCESSIBLE CAROUSEL
	4 JUNIOR ROCKER
	5 4 WAY ROCKER
	6 ACCESSIBLE IN GROUND TRAMPOLINES
	7 WATER PUMP AND PEBBLE LINED WATER RILL WITH WEIR
	8 NATURE PLAY IN MULCH
	9 STEEL DOME CUBBY
	10 STEEL DOME ARBOR WITH CLIMBING PLANTS
	11 DOME SHELTERS WITH ANTI-CLIMB CLADDING AND SEATING WALLS
	12 BOCCIE COURT
	13 LONG PICNIC TABLE
	14 TOILET (2 UNISEX ACCESS TOILETS WITH TIMBER SCREEN AIRLOCK AND DOME ROOF)
	15 CURVED SHELTERS
	16 OPPORTUNITY FOR RESERVE SIGNAGE
	17 ON STREET PARALLEL PARKING
	18 AT GRADE DISABLED CAR PARK
	19 RAIN GARDEN
	20 370m OUTER LOOP RUNNING TRACK
	21 FENCE TO SOUTH ROAD BOUNDARY



Stage 1 Whait Reserve Activation Project

City of Port Lincoln
Barnjarla Country

The State Government is committed to investing in open space and public realm across South Australia, by supporting projects led by local government. The Stage 1 Whait Reserve Activation Project received funding in the 2021-22 Open Space Grant Program, financed through the Planning and Development Fund.

Cost and Funding Contribution

Contribution Source	Amount
Council contribution ¹	\$376,649
Other contribution ²	\$3,500
Grant contribution ³	\$322,910
Total Project Cost	\$703,059

1. Council's contribution is the direct investment toward the project, allocated from the council's budget. This can also include in-kind works where a monetary amount equivalent has been provided.
2. Other contributions can consist of funding support from community groups, as well as external funding from other State and Commonwealth Government grant programs. Additionally, this can include joint partnerships with other councils to achieve regional priorities.
3. Grant contribution is the funding amount provided to council by the Government of South Australia, financed by the Planning and Development Fund.

Project Duration

This project is to commence from January 2022 with anticipated completion in July 2023.*

*Grant recipients are provided 18 months to complete the project. Changes to the project program and duration are subject to council.

Project Description

The project seeks to activate Whait Reserve by providing a range of opportunities for active and passive recreation. The stage 1 works include the delivery of a boardwalk path, nature and adventure play, toilets and accessible pathways. Key elements of the project include:

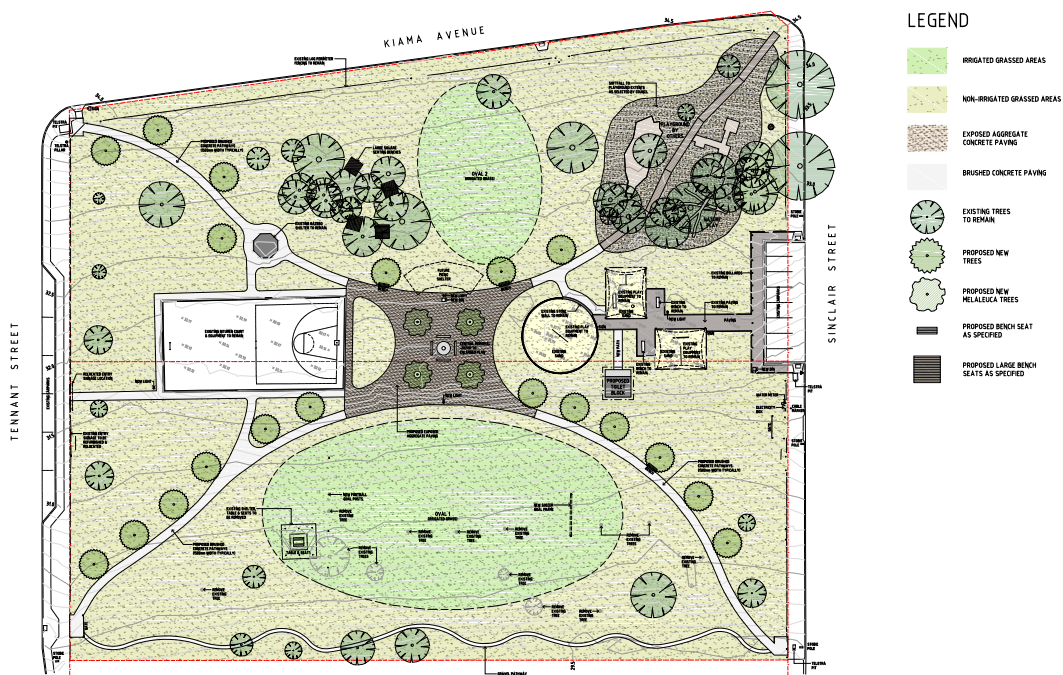
- ✓ Delivering a sustainable and accessible open space to increase community health and wellbeing
- ✓ Providing a green public space for active and passive recreation in an area with limited access to open space
- ✓ Improving safety and accessibility to open space through lighting and passive surveillance
- ✓ Promoting urban greening and climate change resilience by retaining existing trees and appropriate new plantings

Additional Design Information

Location Plan



Concept Plan



Irish Harp Reserve Upgrade

City of Prospect
Karna Country

The State Government is committed to investing in open space and public realm across South Australia, by supporting projects led by local government. The Irish Harp Reserve Upgrade project received funding in the 2021-22 Open Space Grant Program, financed through the Planning and Development Fund.

Cost and Funding Contribution

Contribution Source	Amount
Council contribution ¹	\$325,000
Other contribution ²	\$0
Grant contribution ³	\$325,000
Total Project Cost	\$650,000

1. Council's contribution is the direct investment toward the project, allocated from the council's budget. This can also include in-kind works where a monetary amount equivalent has been provided.
2. Other contributions can consist of funding support from community groups, as well as external funding from other State and Commonwealth Government grant programs. Additionally, this can include joint partnerships with other councils to achieve regional priorities.
3. Grant contribution is the funding amount provided to council by the Government of South Australia, financed by the Planning and Development Fund.

Project Duration

This project is to commence from January 2022 with anticipated completion in August 2023.*

*Grant recipients are provided 18 months to complete the project. Changes to the project program and duration are subject to council.

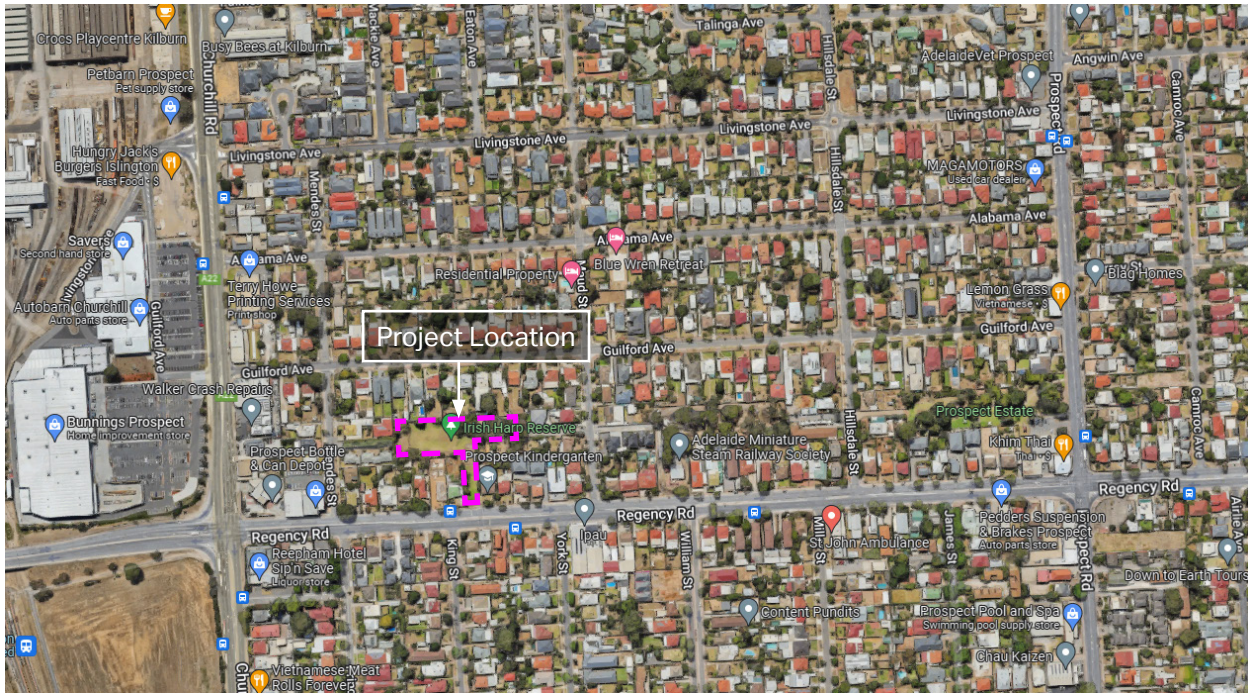
Project Description

The project seeks to upgrade Irish Harp Reserve to provide a recreational space to support the increasing population density occurring in Prospect. The upgrade proposes to include a refurbishment of the recreational playing field, complemented by a new half-court basketball court, play equipment and nature play, while access to and through the precinct will be improved with new paths, lighting and fencing. Key elements of the project include:

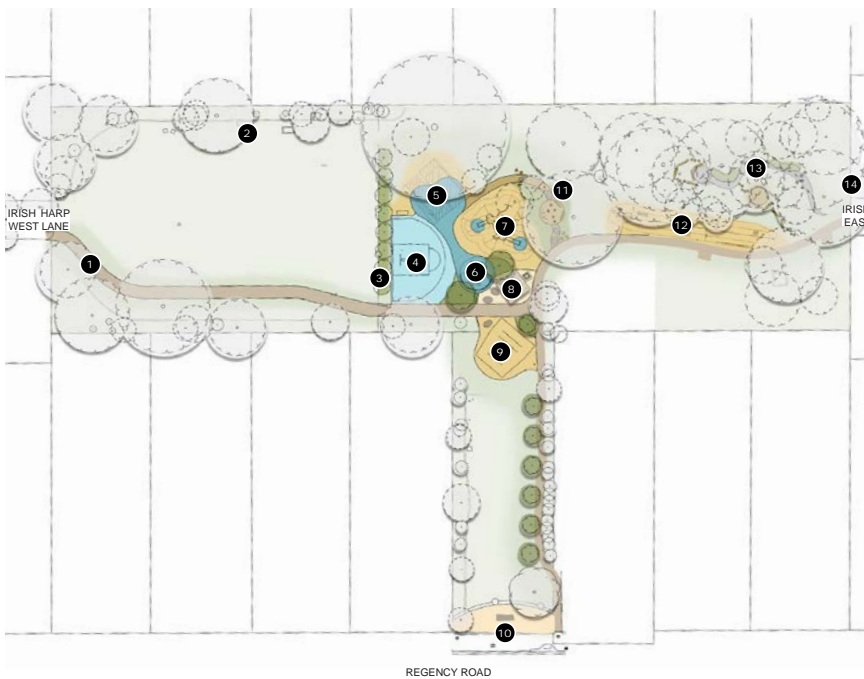
- ✓ Enhancing an existing open space to create play opportunities, informal recreation and family gathering areas within a flexible environment
- ✓ Incorporating new facilities to support a range of unstructured recreational activities and improve the appearance, amenity and functionality of the space, while responding to community engagement
- ✓ Retaining existing native trees and their habitats in an urban setting
- ✓ Improving accessible links between Irish Harp Reserve, adjacent Miniature Railway Park and Prospect Estate Reserve

Additional Design Information

Location Plan



Concept Plan



Legend

- 1 New 2m wide path connecting Irish Harp Lane West to the new playspace
- 2 Dog agility equipment
- 3 New fence with 2 access gates, planting to the eastern fence edge
- 4 New basketball court
- 5 New swings, including basket swing
- 6 Inclusive carousel, in rubber softfall
- 7 New multiplay equipment piece, in organic softfall
- 8 Hardstand area with picnic setting, shelter and BBQ
- 9 Art/play aeroplane piece, in organic softfall
- 10 New defined entry
- 11 Sensory/quiet zone in playspace. Touch, smell, sight and noise sensory items
- 12 New cableway in organic softfall
- 13 Swale with nature play elements
- 14 Clown art piece at entry to Irish Harp East Lane



Dry Creek Corridor Stage 2 Dawson Reserve Open Space Upgrade

City of Tea Tree Gully
Kurna Country

The State Government is committed to investing in open space and public realm across South Australia, by supporting projects led by local government. The Dry Creek Corridor Stage 2 - Dawson Reserve Open Space Upgrade project received funding in the 2021-22 Open Space Grant Program, financed through the Planning and Development Fund.

Cost and Funding Contribution

Contribution Source	Amount
Council contribution ¹	\$665,000
Other contribution ²	\$0
Grant contribution ³	\$500,000
Total Project Cost	\$1,165,000

1. Council's contribution is the direct investment toward the project, allocated from the council's budget. This can also include in-kind works where a monetary amount equivalent has been provided.
2. Other contributions can consist of funding support from community groups, as well as external funding from other State and Commonwealth Government grant programs. Additionally, this can include joint partnerships with other councils to achieve regional priorities.
3. Grant contribution is the funding amount provided to council by the Government of South Australia, financed by the Planning and Development Fund.

Project Duration

This project is to commence from January 2022 with anticipated completion in April 2023.*

*Grant recipients are provided 18 months to complete the project. Changes to the project program and duration are subject to council.

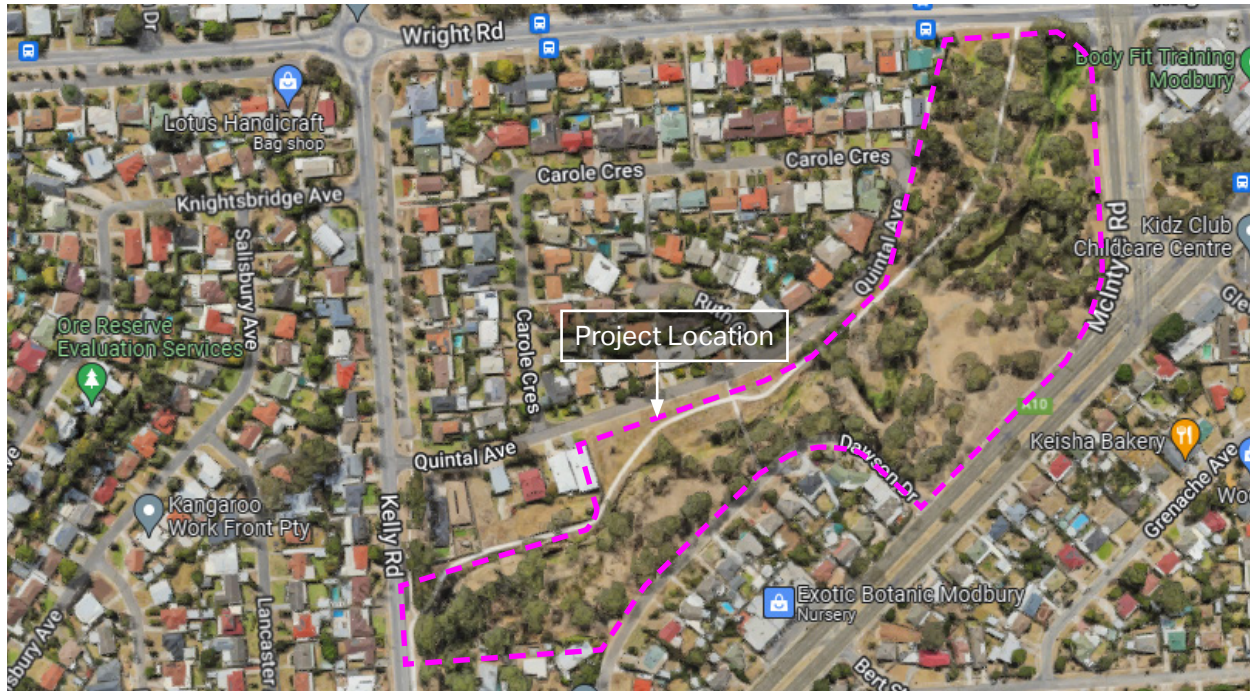
Project Description

The project seeks to deliver Stage 2 of the Dry Creek Corridor masterplan project. This includes upgrading open space and enhancing the biodiversity of Dawson Reserve. The open space network and recreational assets will be delivered for all ages and abilities. Stage 1 of the masterplan included the upgrade of Solandra and Edinburgh Reserves. Key elements of the project include:

- ✔ Implementing new infrastructure including paths, park furniture and picnic facilities
- ✔ Providing accessible and inclusive open space for the community
- ✔ Conserving and enhancing biodiversity, including flora and fauna habitats in the corridor
- ✔ Reflecting the culture and heritage of place, acknowledging the Kurna Peoples and their connection to Country and the reserve
- ✔ Educating the broader community on the significance of the reserve

Additional Design Information

Location Plan



Concept Plan



Highgate Park

City of Unley
Kaurna Country

The State Government is committed to investing in open space and public realm across South Australia, by supporting projects led by local government. The Highgate Park project received funding in the 2021-22 Open Space Grant Program, financed through the Planning and Development Fund.

Cost and Funding Contribution

Contribution Source	Amount
Council contribution ¹	\$360,000
Other contribution ²	\$0
Grant contribution ³	\$345,000
Total Project Cost	\$705,000

1. Council's contribution is the direct investment toward the project, allocated from the council's budget. This can also include in-kind works where a monetary amount equivalent has been provided.
2. Other contributions can consist of funding support from community groups, as well as external funding from other State and Commonwealth Government grant programs. Additionally, this can include joint partnerships with other councils to achieve regional priorities.
3. Grant contribution is the funding amount provided to council by the Government of South Australia, financed by the Planning and Development Fund.

Project Duration

This project is to commence from February 2022 with anticipated completion in August 2023.*

*Grant recipients are provided 18 months to complete the project. Changes to the project program and duration are subject to council.

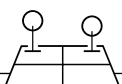
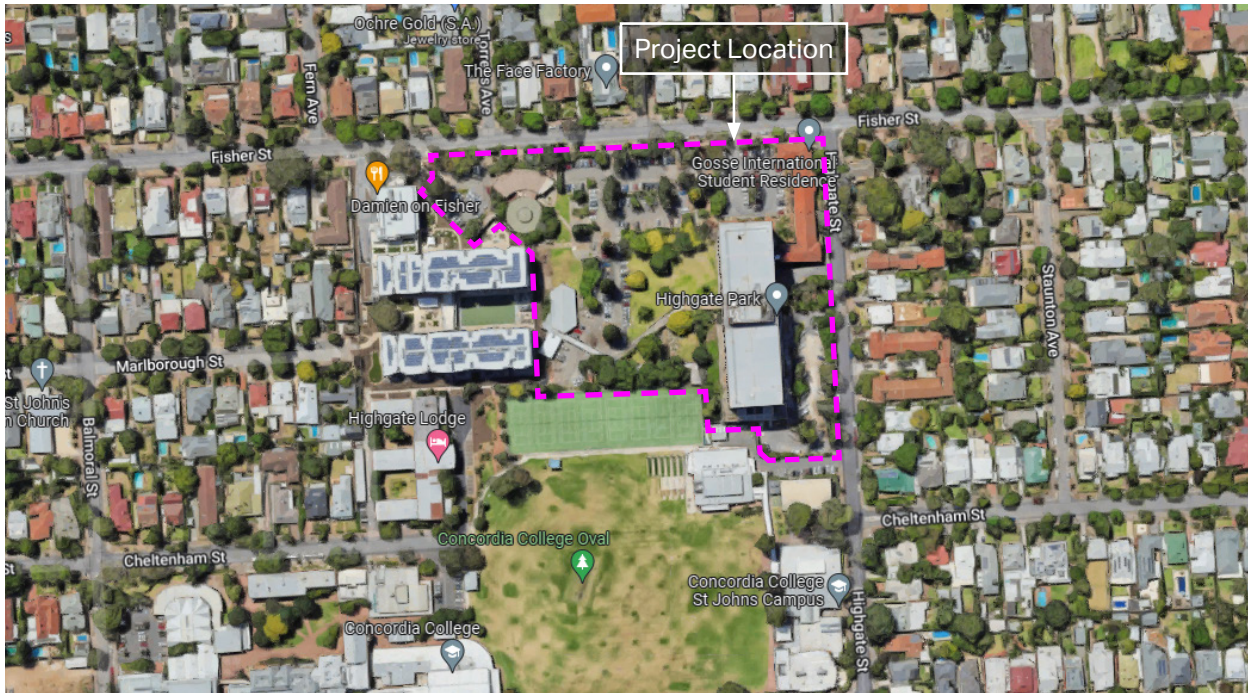
Project Description

The project seeks to acquire land to establish open space as part of the redevelopment of Highgate Park (Julia Farr Centre). The vision for the proposed land purchase is to create a new, integrated and accessible neighbourhood park. Key elements of the project include:

- ✓ Purchasing land to create a new, integrated and accessible neighbourhood park
- ✓ Purchasing land to support higher density living with access to green spaces for the health and wellbeing of residents, as well as surrounding communities
- ✓ Purchasing land to support a range of structured and unstructured activities for the community

Additional Design Information

Location Plan



Victor Harbor Community, Sport and Recreation Precinct

City of Victor Harbor
Ngarrindjeri Country

The State Government is committed to investing in open space and public realm across South Australia, by supporting projects led by local government. The Victor Harbor Community, Sport and Recreation Precinct project received funding in the 2021-22 Open Space Grant Program, financed through the Planning and Development Fund.

Cost and Funding Contribution

Contribution Source	Amount
Council contribution ¹	\$1,015,000
Other contribution ²	\$0
Grant contribution ³	\$1,015,000
Total Project Cost	\$2,030,000

1. Council's contribution is the direct investment toward the project, allocated from the council's budget. This can also include in-kind works where a monetary amount equivalent has been provided.
2. Other contributions can consist of funding support from community groups, as well as external funding from other State and Commonwealth Government grant programs. Additionally, this can include joint partnerships with other councils to achieve regional priorities.
3. Grant contribution is the funding amount provided to council by the Government of South Australia, financed by the Planning and Development Fund.

Project Duration

This project is to commence from January 2022 with anticipated completion in July 2022.*

*Grant recipients are provided 18 months to complete the project. Changes to the project program and duration are subject to council.

Project Description

The project seeks to purchase land that will support the creation of a future community recreation precinct. The site is considered of strategic importance to the City of Victor Harbor and has a spatial relationship with surrounding sport and recreational land, education, residential and civic land uses. Key elements of the project include:

- ✔ Purchasing land to invest in the creation and revitalisation of Lot 101 as a key social, cultural, environmental and economic asset for the long term benefit of the community
- ✔ Purchasing land to provide accessible community open space
- ✔ Purchasing of land to create a meaningful destination for a range of users and activities within the context of its location
- ✔ Purchasing land to strengthen links to adjoining river corridors and reserves

Additional Design Information

Location Plan



Construction of a Shared Path (Stage 1) Thebarton

City of West Torrens
Kaurna Country

The State Government is committed to investing in open space and public realm across South Australia, by supporting projects led by local government. The Construction of a Shared Path (Stage 1) Thebarton project received funding in the 2021-22 Open Space Grant Program, financed through the Planning and Development Fund.

Cost and Funding Contribution

Contribution Source	Amount
Council contribution ¹	\$150,000
Other contribution ²	\$0
Grant contribution ³	\$150,000
Total Project Cost	\$300,000

1. Council's contribution is the direct investment toward the project, allocated from the council's budget. This can also include in-kind works where a monetary amount equivalent has been provided.
2. Other contributions can consist of funding support from community groups, as well as external funding from other State and Commonwealth Government grant programs. Additionally, this can include joint partnerships with other councils to achieve regional priorities.
3. Grant contribution is the funding amount provided to council by the Government of South Australia, financed by the Planning and Development Fund.

Project Duration

This project is to commence from February 2022 with anticipated completion in August 2023.*

*Grant recipients are provided 18 months to complete the project. Changes to the project program and duration are subject to council.

Project Description

The project seeks to construct stage 1 of a shared path along the southern side of the Karrawirra Parri/River Torrens in Thebarton, as a result of Council's successful funding application to the 2020-21 Open Space Grant Program for the land purchase. The project is part of a staged approach to delivering Council's vision to connect Holland Street in the east to South Road in the west. Key elements of the project include:

- ✔ Supporting urban infill, as a result of population growth, by improving the open space network and functionality of the CBD through to Thebarton and nearby suburbs
- ✔ Enhancing accessibility and connectivity by strengthening the cycling corridor in Adelaide and walking opportunities, to support a healthy and active community
- ✔ Strengthening the Karrawirra Parri/River Torrens Linear Park by providing a link from the city to the sea, which includes park furnishings, viewing decks, park amenities, interpretive wayfinding signage and public art that incorporates cultural heritage
- ✔ Incorporating viewing platforms over the river to enable people to experience wildlife and nature education, and to support unstructured recreation

Additional Design Information

Location Plan



Concept Plan



Kesmond Reserve Redevelopment

City of West Torrens
Kaurna Country

The State Government is committed to investing in open space and public realm across South Australia, by supporting projects led by local government. The Kesmond Reserve Redevelopment project received funding in the 2021-22 Open Space Grant Program, financed through the Planning and Development Fund.

Cost and Funding Contribution

Contribution Source	Amount
Council contribution ¹	\$1,000,000
Other contribution ²	\$0
Grant contribution ³	\$1,000,000
Total Project Cost	\$2,000,000

1. Council's contribution is the direct investment toward the project, allocated from the council's budget. This can also include in-kind works where a monetary amount equivalent has been provided.
2. Other contributions can consist of funding support from community groups, as well as external funding from other State and Commonwealth Government grant programs. Additionally, this can include joint partnerships with other councils to achieve regional priorities.
3. Grant contribution is the funding amount provided to council by the Government of South Australia, financed by the Planning and Development Fund.

Project Duration

This project is to commence from March 2022 with anticipated completion in July 2023.*

*Grant recipients are provided 18 months to complete the project. Changes to the project program and duration are subject to council.

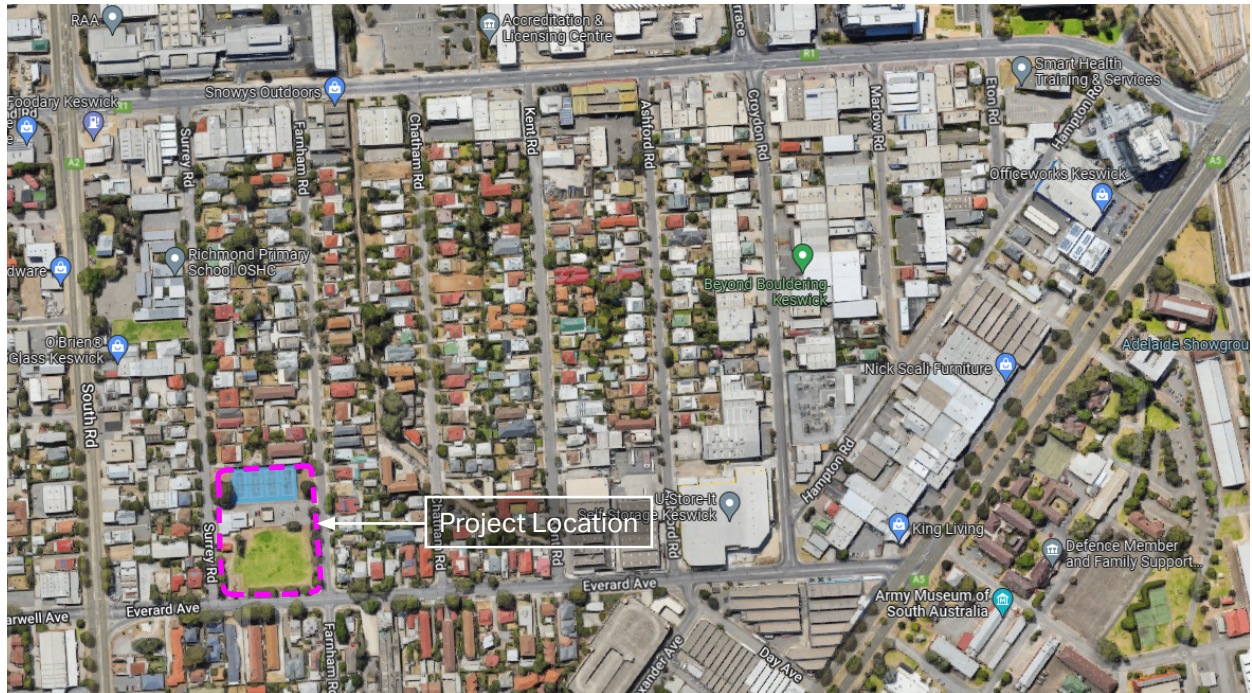
Project Description

The project seeks to redevelop Kesmond Reserve to increase the range of active and passive recreation opportunities offered on site, as well as improve the functionality and accessibility of the site. Key elements of the project include:

- ✓ Creating improved shade and public amenities, nature play, park furniture, multi-use courts for basketball, futsal, cricket, tennis and soccer, as well as increased green open space.
- ✓ Increasing opportunities for recreation, large gatherings and social connection to meet the current and future needs of the local area experiencing growth and urban infill
- ✓ Developing sport and recreation infrastructure to support social, health and wellbeing outcomes for the community
- ✓ Improving the nature of the existing site by relocating carparking and increasing green open space

Additional Design Information

Location Plan



Concept Plan



Legend

- 1 On-street angle parking (21 spaces)
- 2 Re-aligned footpath with tree buffer
- 3 Pedestrian boulevard with feature paving, trees and seating
- 4 Relocated soccer goals
- 5 2 x cricket nets
- 6 Small shelter with seating
- 7 Refurbished community courts to cater for Futsal and Tennis
- 8 Existing memorial & rose gardens retained
- 9 New shelter for scout car
- 10 Raised community garden beds
- 11 Entry plaza with NSA artwork
- 12 New community facility with kiosk, public toilets, event space & NSA office
- 13 Refurbished existing heritage building (redeveloped as shelter or community managed cafe to be investigated)
- 14 Nature play space
- 15 Large shelter with picnic settings
- 16 Multi-sport courts with basketball, netball, table tennis & seating
- 17 Existing playground with seating, drink fountain and BBQ retained
- 18 Existing outdoor gym retained
- 19 Fitness loop with pump track moguls



Town to River

Loxton Access and Inclusion Project

District Council of Loxton Waikerie

Ngaiawang, Ngawait, Nganguruku, Erawirung, Ngintait, Ngaralte and Ngarkat Country

The State Government is committed to investing in open space and public realm across South Australia, by supporting projects led by local government. The Town to River - Loxton Access and Inclusion Project received funding in the 2021-22 Open Space Grant Program, financed through the Planning and Development Fund.

Cost and Funding Contribution

Contribution Source	Amount
Council contribution ¹	\$324,682
Other contribution ²	\$2,500
Grant contribution ³	\$258,125
Total Project Cost	\$585,307

1. Council's contribution is the direct investment toward the project, allocated from the council's budget. This can also include in-kind works where a monetary amount equivalent has been provided.
2. Other contributions can consist of funding support from community groups, as well as external funding from other State and Commonwealth Government grant programs. Additionally, this can include joint partnerships with other councils to achieve regional priorities.
3. Grant contribution is the funding amount provided to council by the Government of South Australia, financed by the Planning and Development Fund.

Project Duration

This project is to commence from January 2022 with anticipated completion in August 2023.*

*Grant recipients are provided 18 months to complete the project. Changes to the project program and duration are subject to council.

Project Description

The project seeks to create accessible and inclusive connectivity between Loxton's main street, East Terrace and the riverfront precinct while aiming to enhance green public open space. The project will include a path and stairway to the grassed embankment at the end of East Terrace as well as offering views of the river. Key elements of the project include:

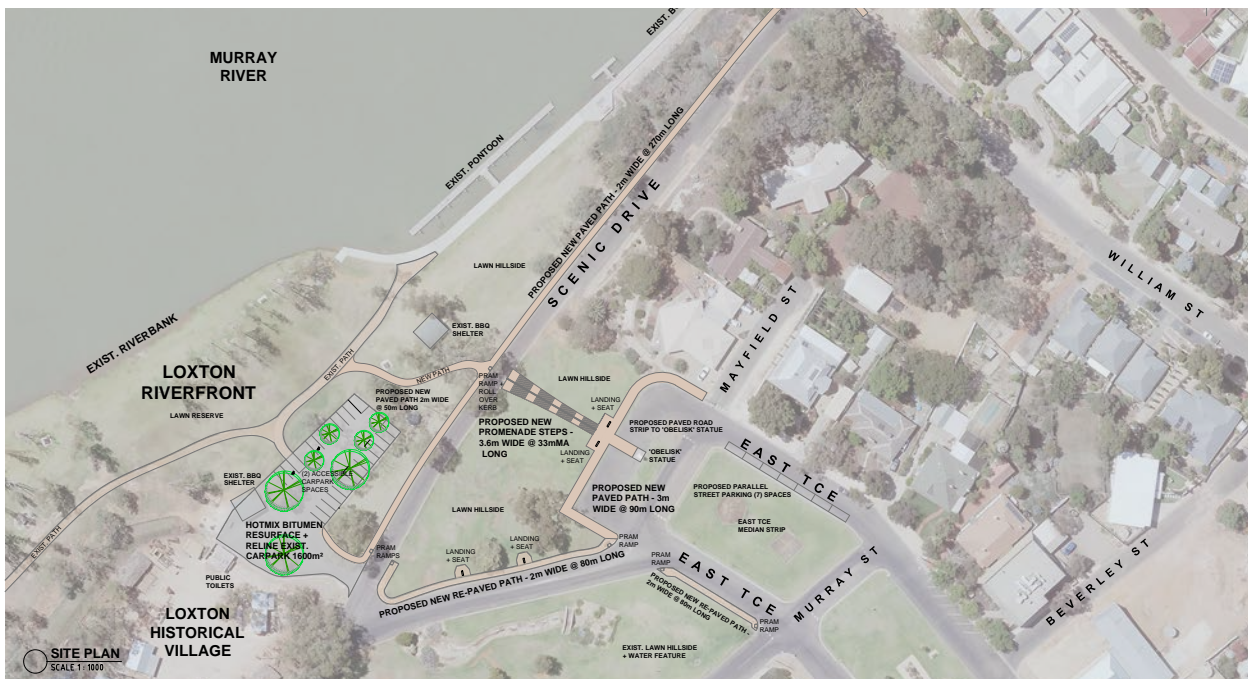
- ✔ Establishing accessible paths to connect people of all ages and abilities to key activity nodes including riverside shelters and barbeque facilities
- ✔ Utilising renewable, sustainably-sourced, recycled and recyclable materials to construct pathways and furniture
- ✔ Linking East Terrace through to Apex Park, down to the Murray River and wharf, through the construction of a pathway that connects key economic, social and recreational precincts within the town centre neighbourhood
- ✔ Delivering improved access to the open space along the riverfront and the recreation opportunities for locals and visitors of all ages and abilities

Additional Design Information

Location Plan



Concept Plan



Eudunda Recreation Hub Activation Children and Young People (Stage 1)

Regional Council of Goyder
Ngadjuri Country

The State Government is committed to investing in open space and public realm across South Australia, by supporting projects led by local government. The Eudunda Recreation Hub Activation - Children and Young People (Stage 1) project received funding in the 2021-22 Open Space Grant Program, financed through the Planning and Development Fund.

Cost and Funding Contribution

Contribution Source	Amount
Council contribution ¹	\$286,631
Other contribution ²	\$0
Grant contribution ³	\$286,629
Total Project Cost	\$573,260

1. Council's contribution is the direct investment toward the project, allocated from the council's budget. This can also include in-kind works where a monetary amount equivalent has been provided.
2. Other contributions can consist of funding support from community groups, as well as external funding from other State and Commonwealth Government grant programs. Additionally, this can include joint partnerships with other councils to achieve regional priorities.
3. Grant contribution is the funding amount provided to council by the Government of South Australia, financed by the Planning and Development Fund.

Project Duration

This project is to commence from March 2022 with anticipated completion in April 2023.*

*Grant recipients are provided 18 months to complete the project. Changes to the project program and duration are subject to council.

Project Description

The project seeks to commence a two-stage activation of the Eudunda Recreation Hub with the development of a multi-purpose skate park located near the Eudunda Area School. The new skate park will replace an unused metal skate ramp and take advantage of a natural slope in the landscape. With this facility being situated next the Eudunda Area School and in the multisport and recreational precinct, it is anticipated to attract a large number of potential users at the site, at times of weekend sport, training and before and after school hours. Key elements of the project include:

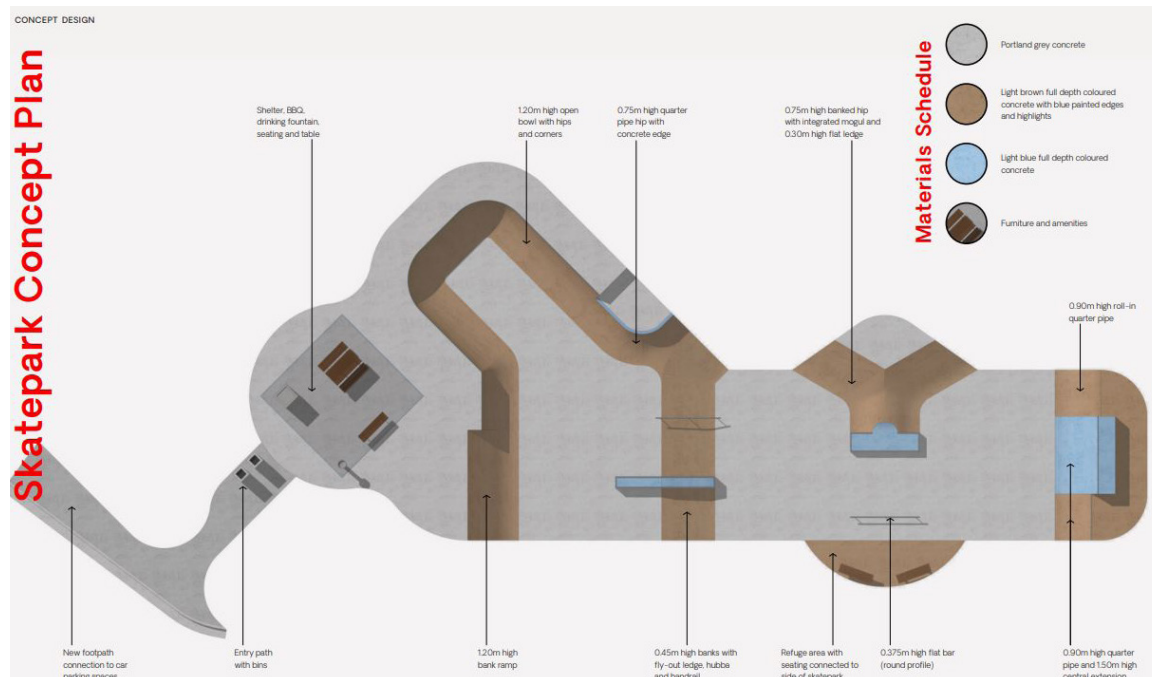
- ✓ Creating a welcoming open space for young people to support positive wellbeing outcomes through unstructured recreation
- ✓ Redesigning the recreation hub to maximise its usage by providing facilities for skate boarding, scooters, rollerblades and BMX users
- ✓ Creating recreational links with the local school, as well as walking and cycling trails such as the Lavender Federation Trail
- ✓ Transforming an unused open space into a active and passive recreation area for people of all ages with the addition of seating, shelters, barbeques and landscaping

Additional Design Information

Location Plan



Concept Plan



Karbeethan Reserve Open Space Expansion

Town of Gawler
Kaurna Country

The State Government is committed to investing in open space and public realm across South Australia, by supporting projects led by local government. The Karbeethan Reserve Open Space Expansion project received funding in the 2021-22 Open Space Grant Program, financed through the Planning and Development Fund.

Cost and Funding Contribution

Contribution Source	Amount
Council contribution ¹	\$970,000
Other contribution ²	\$0
Grant contribution ³	\$800,000
Total Project Cost	\$1,770,000

1. Council's contribution is the direct investment toward the project, allocated from the council's budget. This can also include in-kind works where a monetary amount equivalent has been provided.
2. Other contributions can consist of funding support from community groups, as well as external funding from other State and Commonwealth Government grant programs. Additionally, this can include joint partnerships with other councils to achieve regional priorities.
3. Grant contribution is the funding amount provided to council by the Government of South Australia, financed by the Planning and Development Fund.

Project Duration

This project is to commence from March 2022 with anticipated completion in August 2023.*

*Grant recipients are provided 18 months to complete the project. Changes to the project program and duration are subject to council.

Project Description

The project seeks to purchase land to facilitate the expansion of the adjacent Karbeethan Reserve located in Evanston Gardens, to support future demands. The Karbeethan Reserve Masterplan identifies that the current reserve sports grounds require facility upgrades to ensure its usability. Key elements of the project include:

- ✔ Purchasing land to deliver increased open space available for community use
- ✔ Purchasing land to create open space connections from local schools and community infrastructure to the sporting precinct
- ✔ Purchasing land to create unstructured activity areas and walking trails

Additional Design Information

Location Plan

