

Granite Island Causeway • Historical Context

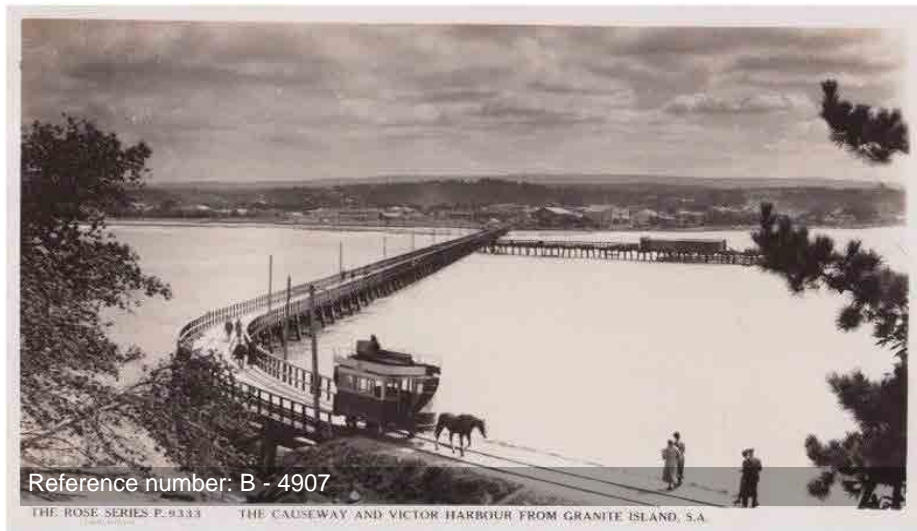


Working jetty | provided the ability for ships to come into the wharf.



Reference number: B - 26220

Screwpile jetty | allowed bigger ships to moor | by around 1900 there were alternate ways of getting produce to market and tram became more of a tourism attraction.



Reference number: B - 4907

THE ROSE SERIES P. 9333 THE CAUSEWAY AND VICTOR HARBOUR FROM GRANITE ISLAND, S.A.



Reference number: B - 23554

Original construction of Victoria Pier, 1864, was extended to Granite Island to accommodate larger vessels in 1875. In 1894 a horse drawn tram service commenced along the Causeway.

dpti.sa.gov.au/gicauseway

 @DPTI_SA  @DPTISA



Government of South Australia

Department of Planning,
Transport and Infrastructure