

Gawler

- Commercial
- Community Facilities
- Deferred Urban
- Heritage
- Industrial
- Miscellaneous
- Open Space
- Primary Production / Mining
- Recreation
- Residential
- Rural Living
- Cadastre
- Development Plan
- Zoning
- Policy Area
- Precinct
- Local government boundary

Produced by Department of Planning, Transport and Infrastructure
 Planning Division
 GPO Box 1815 Adelaide SA 5001
 www.sa.gov.au
 Lambert Conformal Conic
 Projection
 Compiled 9 June 2020

© Government of South Australia 2019
 No part of this document may be reproduced, stored in a retrieval system, or transmitted in any form, or by any means, without the prior written permission of the publisher, Department of Planning, Transport and Infrastructure.

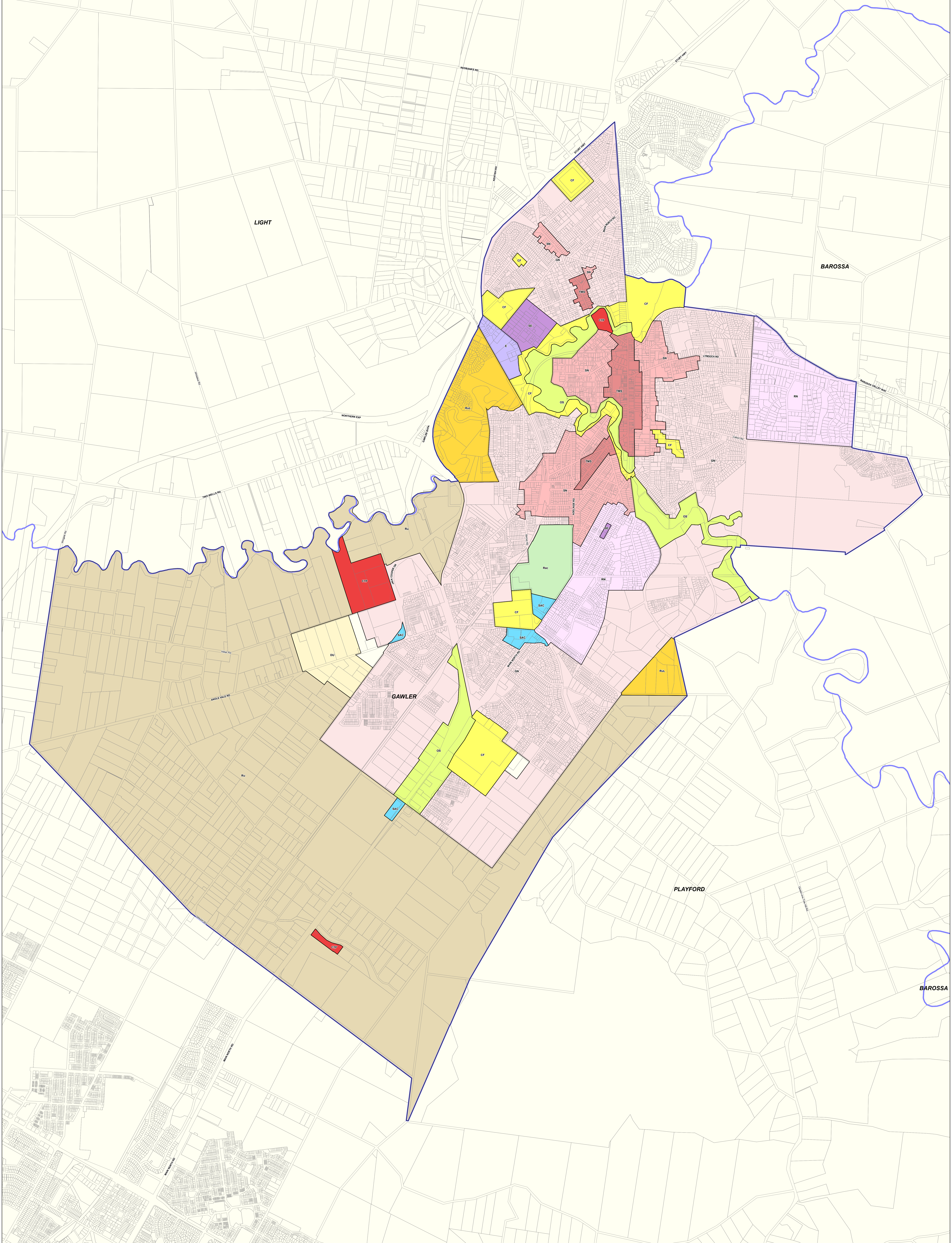
While every reasonable effort has been made to ensure that this document is correct at the time of publication, the State of South Australia and its agencies, instrumentalities, employees and contractors disclaim any and all liability to any person in respect to anything or the consequence of anything done or omitted to be done in reliance upon the whole or any part of this document.



Development Plan Map



- Zoning**
 - B - Business
 - Cu - Community
 - DC - District Commercial
 - DU - Deferred Urban
 - GI - General Industry
 - LCa - Local Centre
 - Lin - Light Industry
 - MURHC - Mixed Use Historic (Conservation)
 - NCA - Neighbourhood Centre
 - NDCEG - Neighbourhood Centre (Evanson Gardens)
 - OS - Open Space
 - R - Residential
 - R(E) - Residential (Gawler East)
 - R(H) - Residential (Hilly)
 - RHC - Residential Historic (Conservation)
 - RP - Residential Park
 - Rec - Recreation
 - Ru - Rural
 - RuL - Rural Living
 - SU - Special Use
- Policy Area**
 - 10 - Whitstee Residential
 - 11 - Willaston Residential
 - 12 - Willaston (Redbanks Road) Residential Historic (Conservation)
 - 13 - Willaston Residential Historic (Conservation)
 - 14 - Gawler East Residential Historic (Conservation)
 - 15 - Gawler South Residential Historic (Conservation)
 - 16 - Light Residential Historic (Conservation)
 - 17 - Light Town Centre Historic (Conservation)
 - 18 - Gawler South Town Centre Historic (Conservation)
 - 19 - Local Centre
 - 2 - Special Use zone Historic (Conservation)
 - 3 - Mixed Use Centre
 - 4 - Evanson Gardens/Evanson-South/Hilly Residential
 - 5 - Evanson/Evanson Park Residential
 - 6 - Gawler East Residential
 - 7 - Gawler South Residential
 - 8 - Gawler West Residential
 - 9 - Hilly Road Residential
- Precinct**
 - 1 - Caravan & Tourist Park



Gawler

2019 Code Consultation Map



Produced by Department of Planning, Transport and Infrastructure
 Planning and Land Use Services
 GPO Box 1815 Adelaide SA 5001
 www.sa.gov.au
 Lambert Conformal Conic
 Projection
 Compiled 30 September 2019

© Government of South Australia 2019
 No part of this document may be reproduced, stored in a retrieval system, or transmitted in any form or by any means, without the prior written permission of the publisher, Department of Planning, Transport and Infrastructure.

While every reasonable effort has been made to ensure that this document is correct at the time of publication, the State of South Australia and its agencies, representatives, employees and contractors, disclaim any and all liability to any person in respect to anything or the consequence of anything done or omitted to be done in reliance upon the whole or any part of this document.

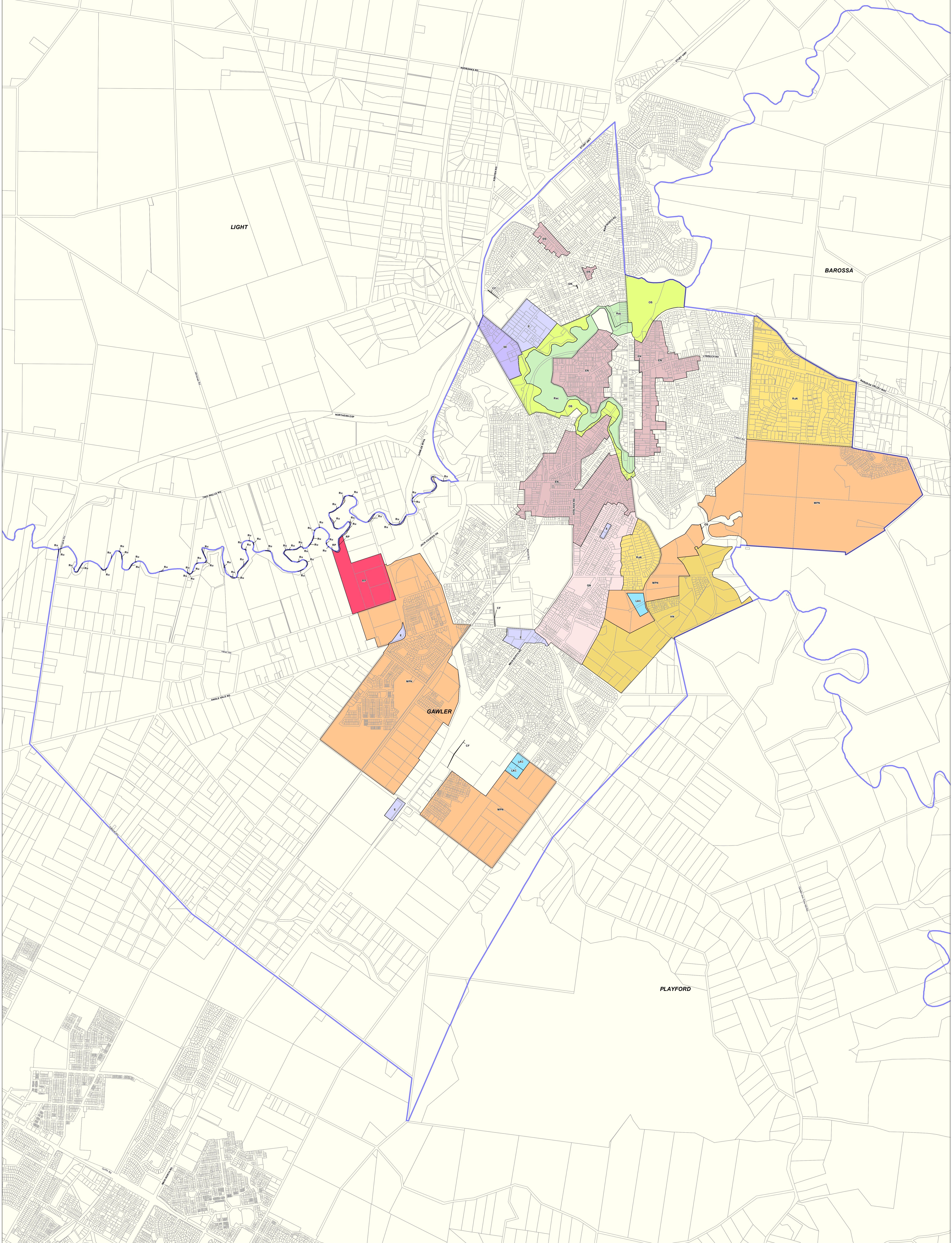


P&D Code Zones
DRAFT

- | | | |
|-----------------------------------|--|--|
| P&D Code Zones | People & Neighbourhoods - Rural | Productive Economy - Primary Industry |
| Infrastructure & Movement Systems | Rural Living | Rural |
| Community Facilities | Productive Economy - Employment | Resilient Communities & Environment |
| Caravan and Tourist Park | Suburban Activity Centre | Open Space |
| Deferred Urban | Employment | Recreation |
| General Neighbourhood | Suburban Employment | Local government boundary |
| Residential Neighbourhood | Productive Economy - Mixed Use | Cadastre |
| Suburban Neighbourhood | Township Main Street | |

- P&D Code Zones Abbreviations**
- CF - Community Facilities
 - CTP - Caravan and Tourist Park
 - DU - Deferred Urban
 - E - Employment
 - GN - General Neighbourhood
 - OS - Open Space
 - RN - Residential Neighbourhood
 - Res - Recreation
 - Ru - Rural Living
 - SAC - Suburban Activity Centre
 - SE - Suburban Employment
 - SN - Suburban Neighbourhood
 - TMS - Township Main Street

PLN ID: 8811



Gawler

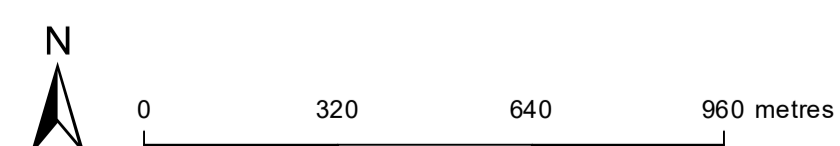
P&D Code Zones
DRAFT

- P&D Code Zones**
- People & Neighbourhoods - Residential
 - Established Neighbourhood
 - General Neighbourhood
 - Hills Neighbourhood
 - Master Planned Neighbourhood
 - Residential Park
 - People & Neighbourhoods - Rural
 - Rural Neighbourhood

- Productive Economy - Employment**
- Local Activity Centre
 - Employment
 - Strategic Employment
- Infrastructure & Movement Systems**
- Community Facilities
- Productive Economy - Primary Industry**
- Rural

- Resilient Communities & Environment**
- Open Space
 - Recreation
 - Local government boundary
 - Cadastral

2020 Updated Code Consultation Map



Produced by Atorney-General's Department
Planning and Land Use Services
GPO Box 1815 Adelaide SA 5001
www.sa.gov.au
Lambert Conformal Conic
4 November 2020

Projection Compiled
© Government of South Australia 2020
No part of this document may be reproduced, stored in a retrieval system, or transmitted in any form, or by any means, without the prior written permission of the publisher, the Attorney-General's Department.
While every reasonable effort has been made to ensure that this document is correct at the time of publication, the State of South Australia and its agencies, representatives, employees and contractors, disclaim any and all liability to any person in respect to anything or the consequences of anything done or omitted to be done in reliance upon the whole or any part of this document.



PLAN 12/181

Current Development Plan Zone	Current Development Plan Policy Area	Current Development Plan Precinct	Consultation November 2019 Code Proposal	Consultation November 2020 Code Proposal	Planning & Design Code Subzone
Business			Suburban Activity Centre	Employment	
Community			Community Facilities	Community Facilities	
Deferred Urban			Deferred Urban	Deferred Urban	
District Commercial			Suburban Employment	Employment	
General Industry			Employment	Strategic Employment	
Light Industry			Suburban Employment	Employment	
Local Centre			Suburban Activity Centre	Local Activity Centre	
Local Centre			Open Space	Local Activity Centre	
Mixed Use Historic (Conservation)			Township Main Street	Township Main Street	
Neighbourhood Centre			Suburban Activity Centre	Suburban Activity Centre	
Neighbourhood Centre (Evanston Gardens)			Suburban Activity Centre	Suburban Activity Centre	
Neighbourhood Centre (Evanston Gardens)			Community Facilities	Community Facilities	
Open Space			Open Space	Open Space	
Recreation			Recreation	Recreation	
Residential	Evanston Gardens/Evanston South/Hillier Residential		General Neighbourhood	Master Planned Neighbourhood	
Residential	Evanston/Evanston Park Residential		General Neighbourhood	General Neighbourhood	
Residential	Gawler East Residential		General Neighbourhood	General Neighbourhood	
Residential	Gawler South Residential		Residential Neighbourhood	Rural Neighbourhood	
Residential	Gawler West Residential		General Neighbourhood	General Neighbourhood	
Residential	Hillier Road Residential		General Neighbourhood	General Neighbourhood	
Residential	Wheatsheaf Residential		Residential Neighbourhood	Rural Neighbourhood	
Residential	Willaston Residential		General Neighbourhood	General Neighbourhood	
Residential (Gawler East)	Local Centre		General Neighbourhood	Local Activity Centre	

Current Development Plan Zone	Current Development Plan Policy Area	Current Development Plan Precinct	Consultation November 2019 Code Proposal	Consultation November 2020 Code Proposal	Planning & Design Code Subzone
Residential (Gawler East)	Mixed Use Centre		General Neighbourhood	Master Planned Neighbourhood	Emerging Activity Centre
Residential (Gawler East)			General Neighbourhood	Master Planned Neighbourhood	
Residential (Hills)			General Neighbourhood	Hills Neighbourhood	
Residential Historic (Conservation)	Gawler East Residential Historic (Conservation)		Suburban Neighbourhood	Established Neighbourhood	
Residential Historic (Conservation)	Gawler South Residential Historic (Conservation)		Suburban Neighbourhood	Established Neighbourhood	
Residential Historic (Conservation)	Light Residential Historic (Conservation)		Suburban Neighbourhood	Established Neighbourhood	
Residential Historic (Conservation)	Willaston (Redbanks Road) Residential Historic (Conservation)		Suburban Neighbourhood	Established Neighbourhood	
Residential Historic (Conservation)	Willaston Residential Historic (Conservation)		Suburban Neighbourhood	Established Neighbourhood	
Residential Park			Caravan and Tourist Park	Residential Park	
Rural			Rural	Rural	
Rural Living			Rural Living	Rural Living	
Special Use	Special Use zone Historic (Conservation)	Caravan and Tourist Park	Caravan and Tourist Park	Caravan and Tourist Park	
Special Use	Special Use zone Historic (Conservation)		Open Space	Recreation	
Special Use			Community Facilities	Community Facilities	
Town Centre Historic (Conservation)	Gawler South Town Centre Historic (Conservation)		Township Main Street	Township Main Street	
Town Centre Historic (Conservation)	Light Town Centre Historic (Conservation)		Township Main Street	Township Main Street	