

SOUTHERN LAUNCH

WHALERS WAY

WHALERS WAY ORBITAL LAUNCH COMPLEX

DRAWING INDEX

WGA181404-DR-CC-0001	OVERALL SITE PLAN
WGA181404-DR-CC-0002	SITE A CIVIL PLAN 1 OF 2
WGA181404-DR-CC-0003	SITE A CIVIL PLAN 2 OF 2
WGA181404-DR-CC-0004	SITE B CIVIL PLAN 1 OF 2
WGA181404-DR-CC-0005	SITE B CIVIL PLAN 2 OF 2
WGA181404-DR-CC-0006	SITE D CIVIL PLAN
WGA181404-DR-CC-0007	SITE E CIVIL PLAN
WGA181404-DR-CC-0010	SITE A - PRELIMINARY EARTHWORKS
WGA181404-DR-CC-0011	SITE B - PRELIMINARY EARTHWORKS
WGA181404-DR-CC-0012	SITE D - PRELIMINARY EARTHWORKS
WGA181404-DR-CC-0013	SITE E - PRELIMINARY EARTHWORKS

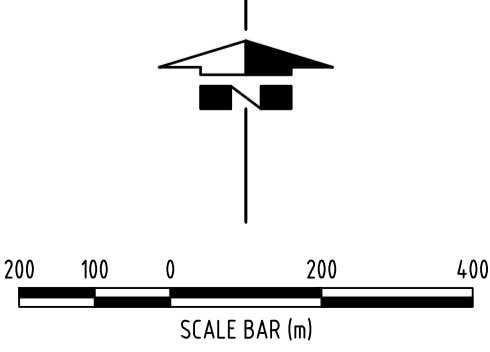


LEGEND

- EXISTING TRACK (TO BE MAINTAINED)
- EXISTING CARRIAGEWAY TO BE WIDENED TO 8.8m
- EXISTING CARRIAGEWAY TO BE WIDENED TO 5.0m
- NEW 8.8m WIDE CARRIAGEWAY
- NEW 4.0m EMERGENCY EGRESS CARRIAGEWAY
- GROUND WATER WELL 6028-1573
(COORDINATES 558977.18 E, 6134909.65 N)

V:\2018\181404-181404-181404-181404-Southern Launch\Drawings\WGA181404-DR-CC-0001.dwg, D. 19/02/2021 12:47 PM, User:ing

When sheet printed full size, the scale bar is 100mm.
0 50 100mm



INFORMATION ISSUE
NOT FOR CONSTRUCTION

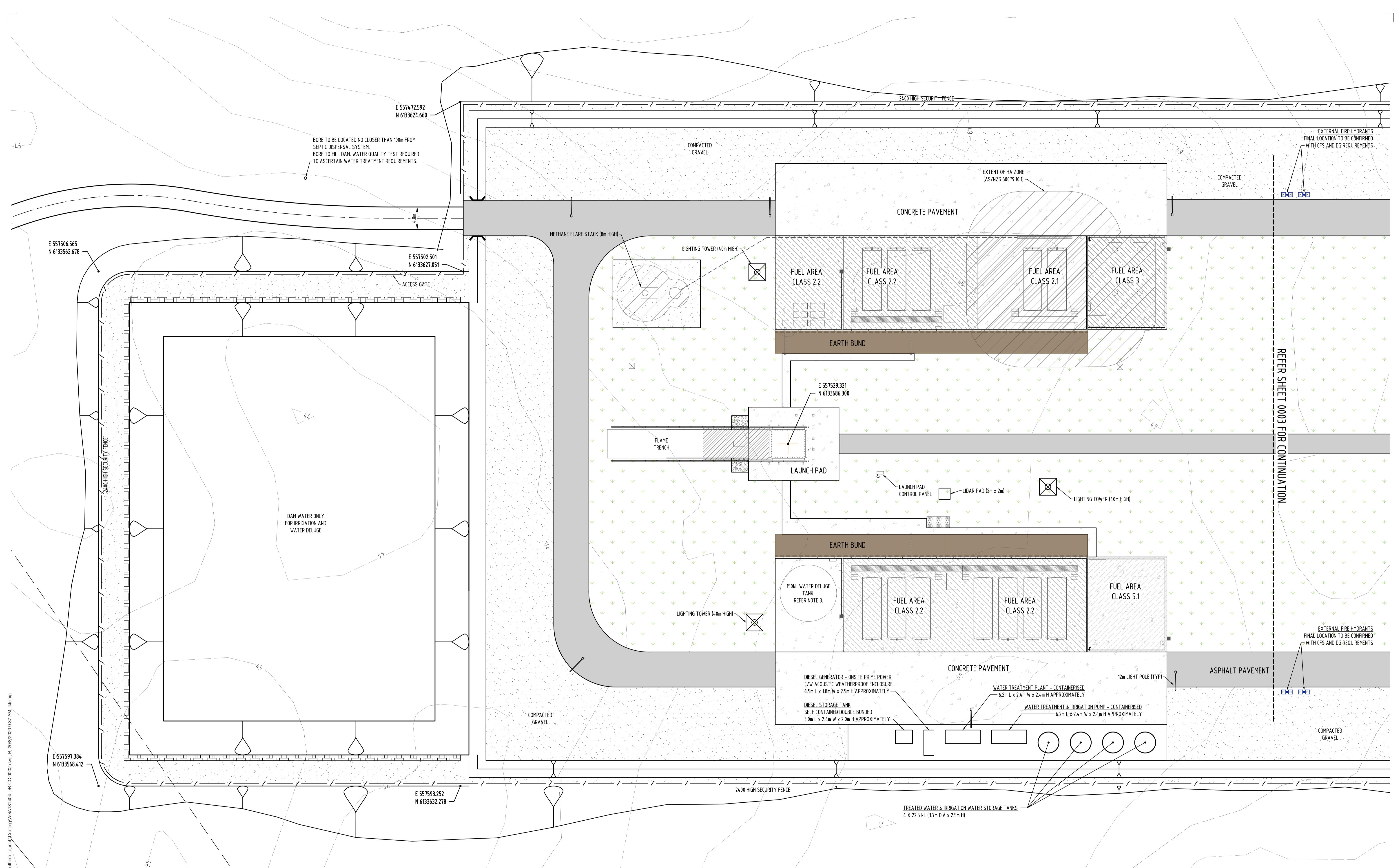
REV.	DATE	DESCRIPTION	DRAFT	ENG.	CHKD
A	10.08.20	PRELIMINARY ISSUE	JJF	TJM	TJM
B	21.08.20	REVISED PRELIMINARY ISSUE	LK	TJM	TJM
C	10.12.20	SITE D UPDATED	JJF	TJM	TJM
D	15.02.21	UPDATED ISSUE	LK	TJM	TJM

WGA
WALLBRIDGE GILBERT
AZTEC
60 Wyatt Street, Adelaide
South Australia 5000
Telephone 08 8223 7433
Email adelaide@wga.com.au

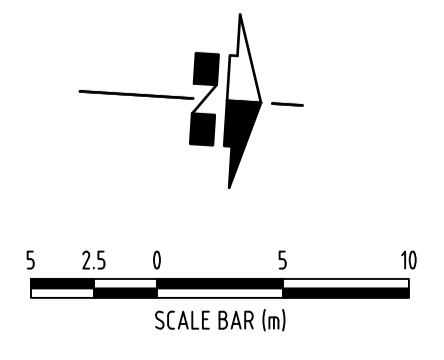
SOUTHERN LAUNCH
WHALERS WAY, SOUTH AUSTRALIA
EXISTING ALIGNMENT MODIFICATIONS
OVERALL SITE PLAN

A1 DOCUMENT NUMBER
Project Number Sheet No. Rev.

Design Drawn
TM JJF
WGA181404-DR-CC-0001 D



- SITE NOTES:**
1. LIGHTING FOR ROADS AND PUBLIC PEDESTRIAN SPACES IS TO BE TO AS1158.3 LEVEL PC3.
 2. LIGHTING FOR EXTERNAL OUTDOOR WORKPLACE IS TO BE TO AS1680.5.
 3. 3.0m HIGH TANK ON 20m HIGH RAISED PLATFORM.



INFORMATION ISSUE
NOT FOR CONSTRUCTION

REV.	DATE	DESCRIPTION	DRAFT	ENG.	CHKD
A	10.08.20	PRELIMINARY ISSUE	JJF	TJM	TJM
B	21.08.20	REVISED PRELIMINARY ISSUE	LK	TJM	TJM

WGA
WALLBRIDGE GILBERT
AZTEC

60 Wyatt Street, Adelaide
South Australia 5000
Telephone 08 8223 7433
Email adelaide@wga.com.au

SOUTHERN LAUNCH
WHALERS WAY, SOUTH AUSTRALIA
EXISTING ALIGNMENT MODIFICATIONS
SITE A - SHEET 1 OF 2

A1 DOCUMENT NUMBER
Project Number Sheet No. Rev.

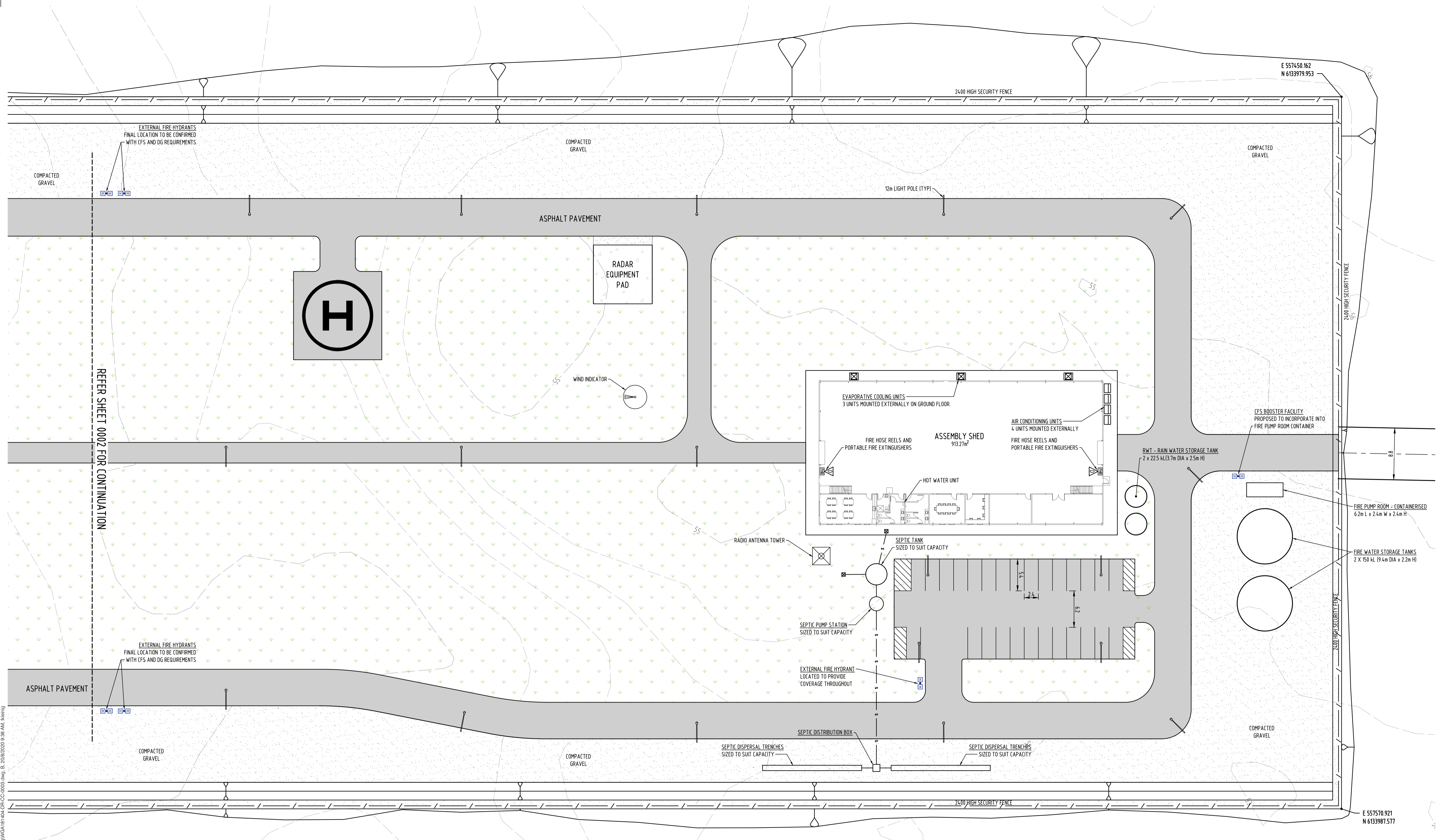
Design Drawn
TM JJF

WGA181404-DR-CC-0002 B

V:2018181404-161891816164- Southern Launch\Drawings\WGA\16164-DR-CC-0002.dwg, B, 20/08/2020 9:37 AM, helling

When sheet printed full size, the scale bar is 100mm.

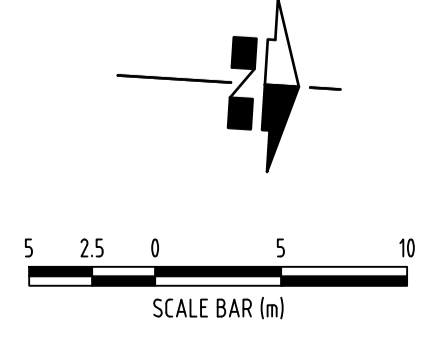
REFER SHEET 0003 FOR CONTINUATION



REFER SHEET 0002 FOR CONTINUATION

SITE NOTES:

- LIGHTING FOR ROADS AND PUBLIC PEDESTRIAN SPACES IS TO BE TO AS158 3 LEVEL PC3.
- LIGHTING FOR EXTERNAL OUTDOOR WORKPLACE IS TO BE TO AS1680.5.
- 30m HIGH TANK ON 20m HIGH RAISED PLATFORM.



INFORMATION ISSUE
NOT FOR CONSTRUCTION

REV.	DATE	DESCRIPTION	DRAFT	ENG.	CHKD
A	10.08.20	PRELIMINARY ISSUE	JJF	TJM	TJM
B	21.08.20	REVISED PRELIMINARY ISSUE	LK	TJM	TJM

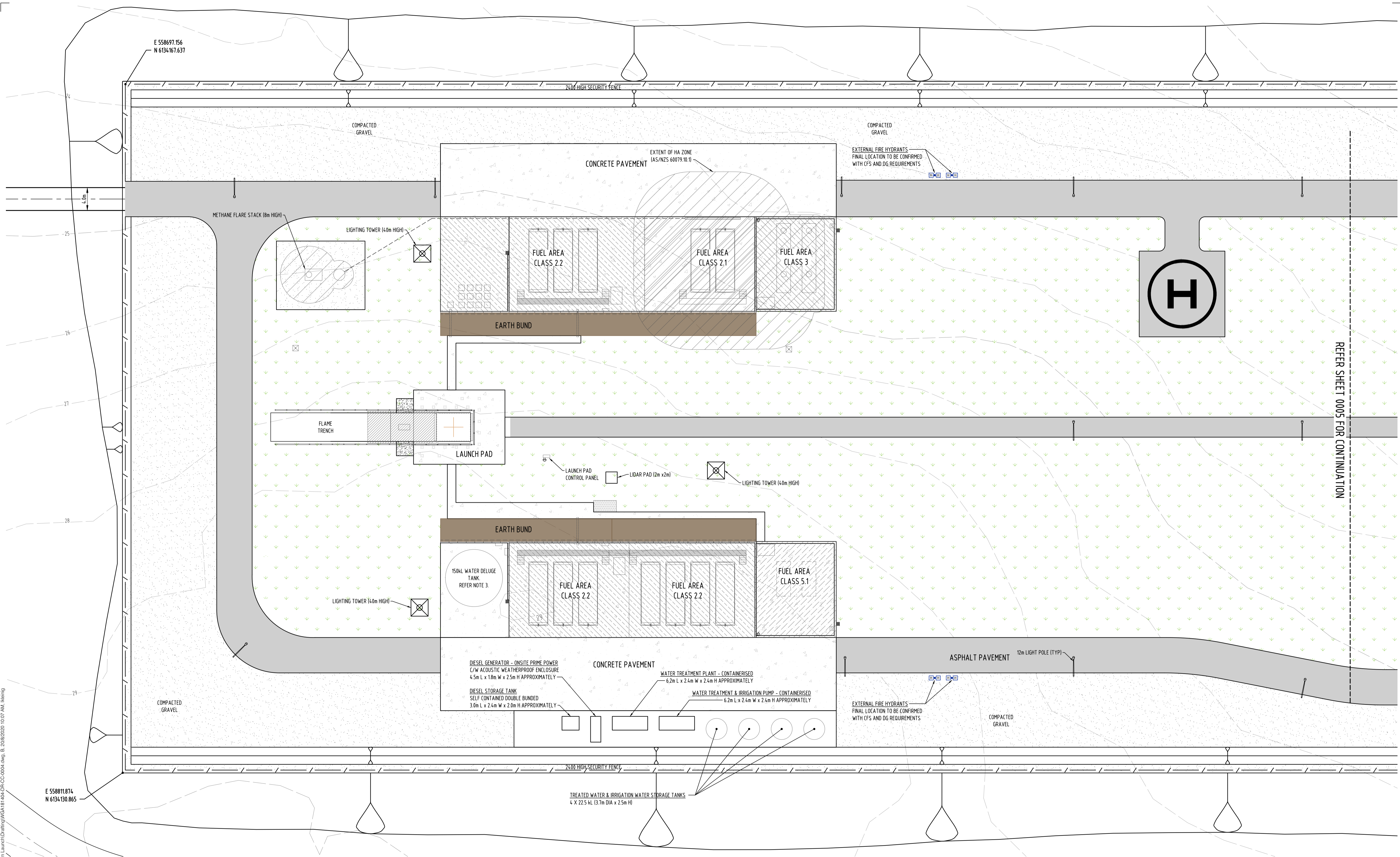
WGA
WALLBRIDGE GILBERT
AZTEC
60 Wyatt Street, Adelaide
South Australia 5000
Telephone 08 8223 7433
Email adelaide@wga.com.au

SOUTHERN LAUNCH
WHALERS WAY, SOUTH AUSTRALIA
EXISTING ALIGNMENT MODIFICATIONS
SITE A - SHEET 2 OF 2

A1 DOCUMENT NUMBER
Project Number Sheet No. Rev.
Design Drawn
TM JJF
WGA181404-DR-CC-0003 B

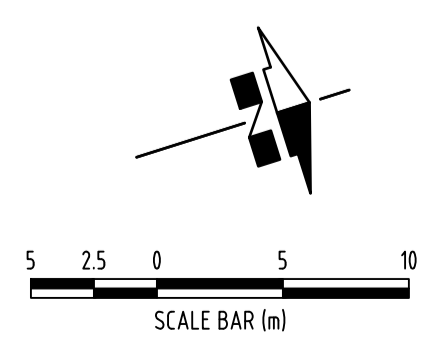
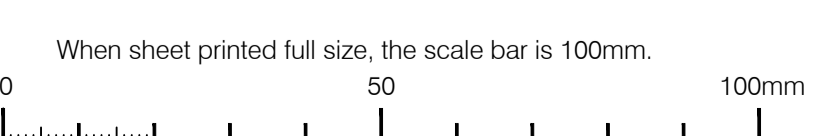
V:2018/10/10 - 16:19:18 164 - Southern Launch\Drawings\WGA16164-DR-CC-0003.dwg, B:2018/10/10 9:38 AM, JJJ

When sheet printed full size, the scale bar is 100mm.
0 50 100mm



V:2018161400-161499161404-Southern Launch1D:\a\m\g\161404-DR-CC-0004.dwg, B: 2018/2020/10/07 AM, Meeting

- SITE NOTES:**
1. LIGHTING FOR ROADS AND PUBLIC PEDESTRIAN SPACES IS TO BE TO AS158.3 LEVEL PC3.
 2. LIGHTING FOR EXTERNAL OUTDOOR WORKPLACE IS TO BE TO AS1680.5.
 3. 3.0m HIGH TANK ON 20m HIGH RAISED PLATFORM.



INFORMATION ISSUE
NOT FOR CONSTRUCTION

REV.	DATE	DESCRIPTION	DRAFT	ENG.	CHKD
A	10.08.20	PRELIMINARY ISSUE	JJF	TJM	TJM
B	21.08.20	REVISED PRELIMINARY ISSUE	LK	TJM	TJM

WGA
WALLBRIDGE GILBERT
AZTEC

60 Wyatt Street, Adelaide
South Australia 5000
Telephone 08 8223 7433
Email adelaide@wga.com.au

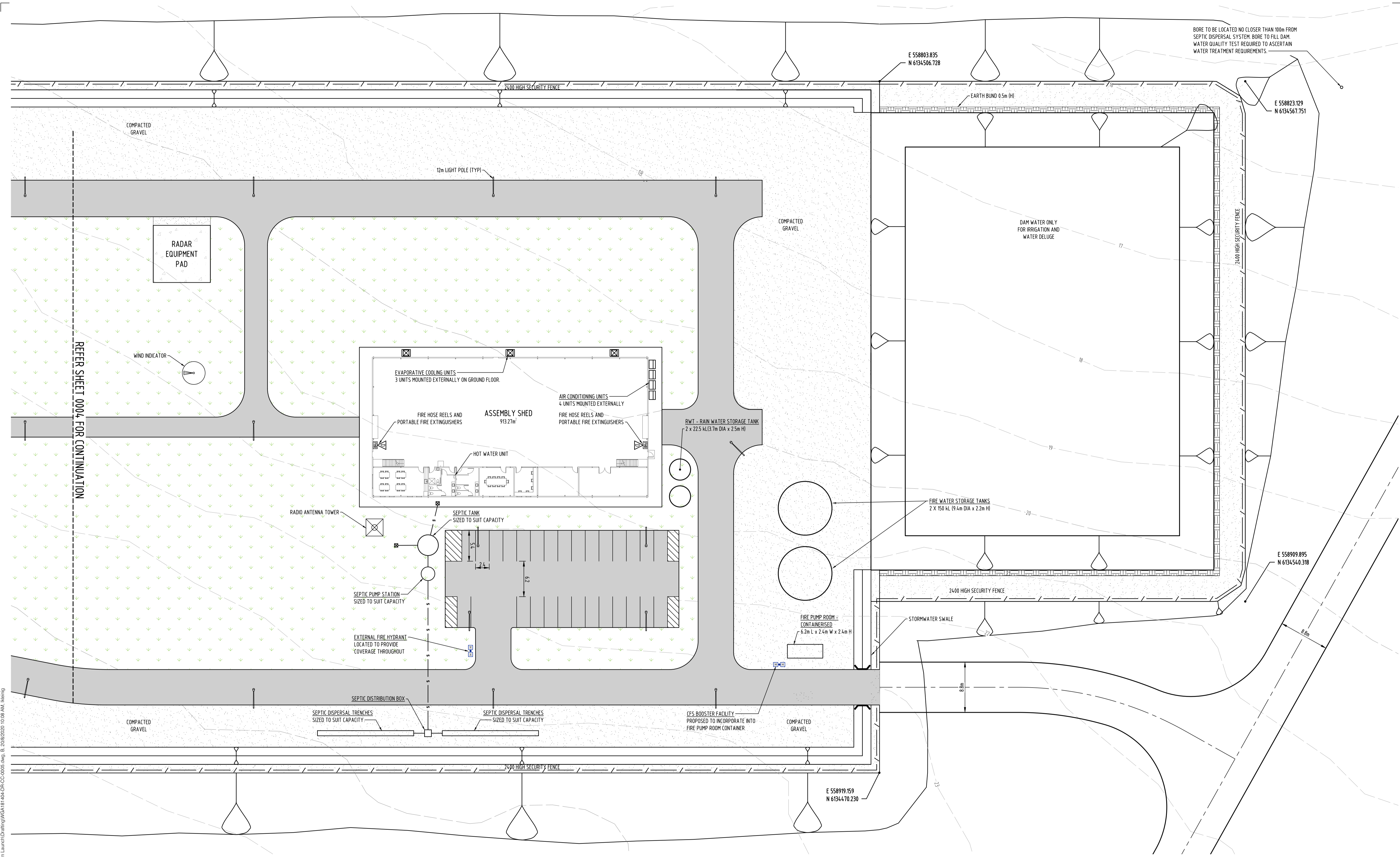
SOUTHERN LAUNCH
WHALERS WAY, SOUTH AUSTRALIA
EXISTING ALIGNMENT MODIFICATIONS
SITE B - SHEET 1 OF 2

A1 DOCUMENT NUMBER
Project Number Sheet No. Rev.

Design Drawn
TM JJF

WGA181404-DR-CC-0004 B

REFER SHEET 0005 FOR CONTINUATION



BORE TO BE LOCATED NO CLOSER THAN 100m FROM SEPTIC DISPERSAL SYSTEM BORE TO FILL DAM. WATER QUALITY TEST REQUIRED TO ASCERTAIN WATER TREATMENT REQUIREMENTS.

E 558803.835
N 6134506.728

E 558823.129
N 6134567.751

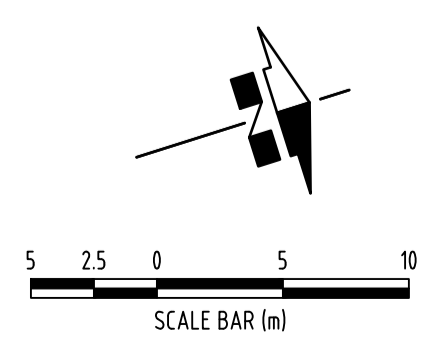
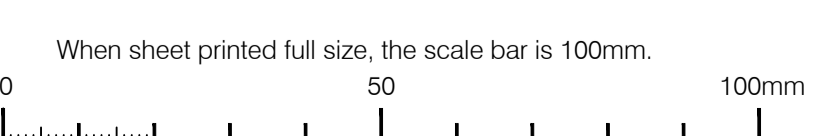
E 558909.895
N 6134540.318

E 558919.159
N 6134470.230

REFER SHEET 0004 FOR CONTINUATION

- SITE NOTES:**
1. LIGHTING FOR ROADS AND PUBLIC PEDESTRIAN SPACES IS TO BE TO AS158.3 LEVEL PC3.
 2. LIGHTING FOR EXTERNAL OUTDOOR WORKPLACE IS TO BE TO AS1680.5.
 3. 3.0m HIGH TANK ON 20m HIGH RAISED PLATFORM.

V:2018/16/160-16/169/16/164- Southern Launch\Drawings\WGA\16164-DR-CC-0005.dwg, B: 23/08/2020 10:08 AM, Meeting



INFORMATION ISSUE
NOT FOR CONSTRUCTION

REV.	DATE	DESCRIPTION	DRAFT	ENG.	CHKD
A	10.08.20	PRELIMINARY ISSUE	JJF	TJM	TJM
B	21.08.20	REVISED PRELIMINARY ISSUE	LK	TJM	TJM

WGA
WALLBRIDGE GILBERT
AZTEC

60 Wyatt Street, Adelaide
South Australia 5000
Telephone 08 8223 7433
Email adelaide@wga.com.au

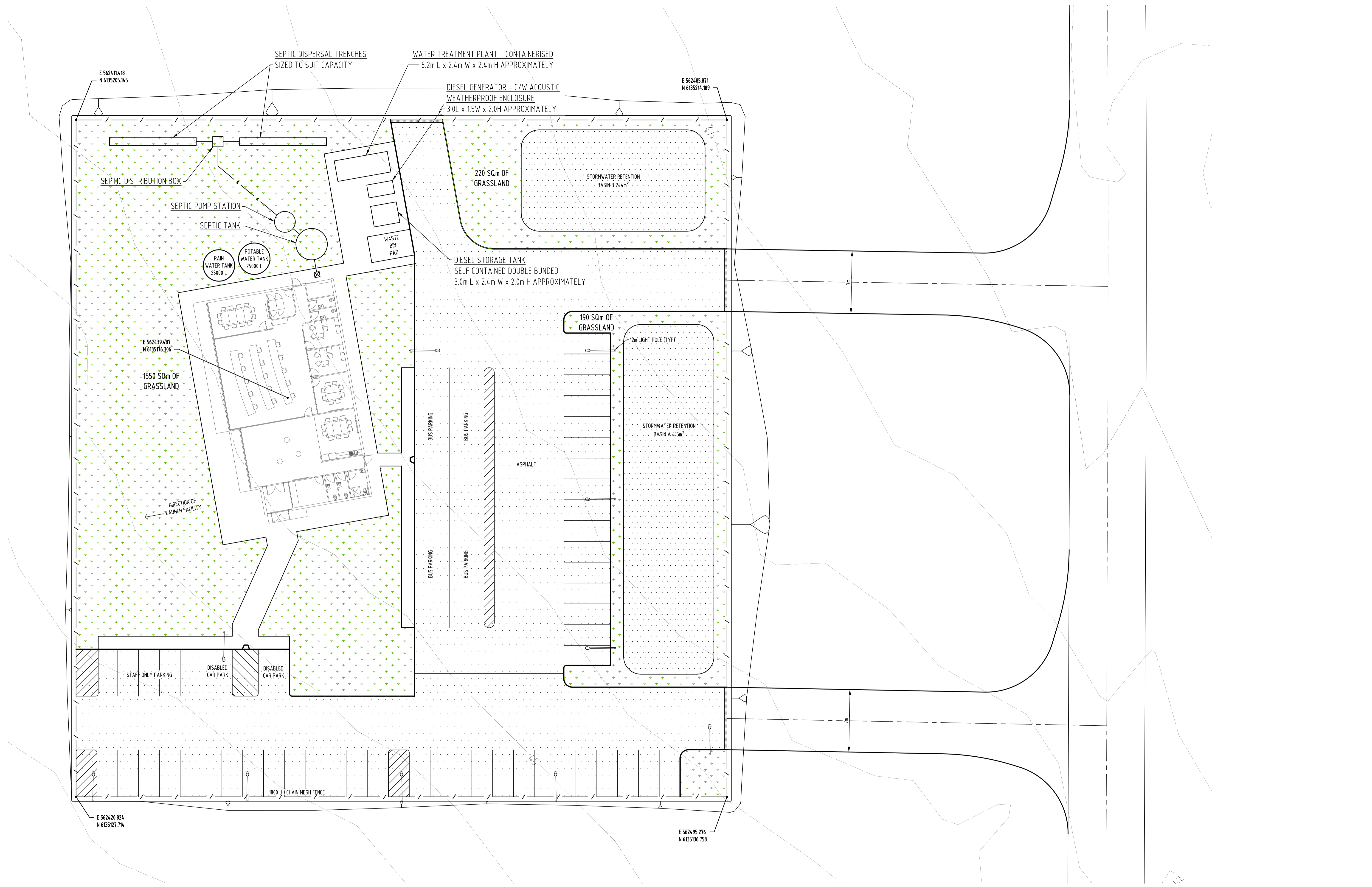
SOUTHERN LAUNCH
WHALERS WAY, SOUTH AUSTRALIA
EXISTING ALIGNMENT MODIFICATIONS
SITE B - SHEET 2 OF 2

A1 DOCUMENT NUMBER
Project Number Sheet No. Rev.

Design Drawn
TM JJF

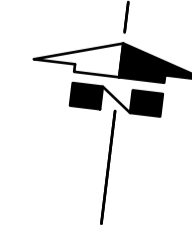
WGA181404-DR-CC-0005 B

V:2018161400-161499161404-Southern Launch\Drawings\WGA181404-DR-CC-0007.dwg, C: 15/02/2021 12:55 PM, User: j



SITE NOTES:

1. LIGHTING FOR ROADS AND PUBLIC PEDESTRIAN SPACES IS TO BE TO AS1158.3 LEVEL PC3.
2. LIGHTING FOR EXTERNAL OUTDOOR WORKPLACE IS TO BE TO AS1680.5.



When sheet printed full size, the scale bar is 100mm.

INFORMATION ISSUE
NOT FOR CONSTRUCTION

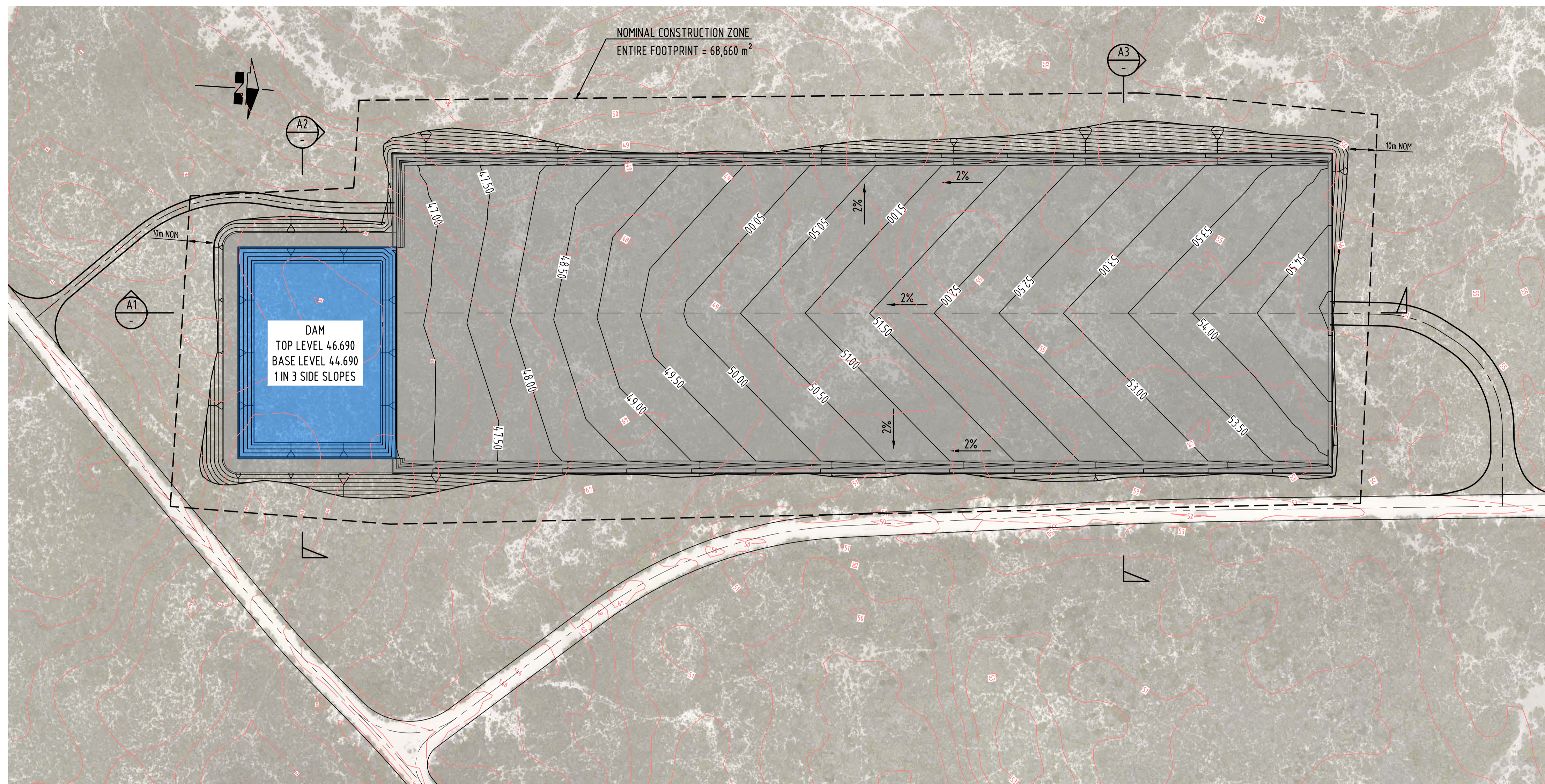
REV.	DATE	DESCRIPTION	DRAFT	ENG.	CHKD
A	10.08.20	PRELIMINARY ISSUE	JJF	TJM	TJM
B	21.08.20	REVISED PRELIMINARY ISSUE	LK	TJM	TJM
C	15.02.21	UPDATED ISSUE	LK	TJM	TJM



60 Wyatt Street, Adelaide
South Australia 5000
Telephone 08 8223 7433
Email adelaide@wga.com.au

SOUTHERN LAUNCH
WHALERS WAY, SOUTH AUSTRALIA
EXISTING ALIGNMENT MODIFICATIONS
SITE E

A1 DOCUMENT NUMBER
Project Number Sheet No. Rev.
Design Drawn
TM JJF
WGA181404-DR-CC-0007 C



DAM

DATUM RL 38.000	
DESIGN LEVEL	44.688
EXISTING SURFACE	44.688
CHAINAGE	111.002

SECTION A2
SCALE 1:1000H 1500V

DAM

DATUM RL 38.000	
DESIGN LEVEL	44.688
EXISTING SURFACE	44.688
CHAINAGE	111.002

SECTION A1
SCALE 1:1000H 1500V

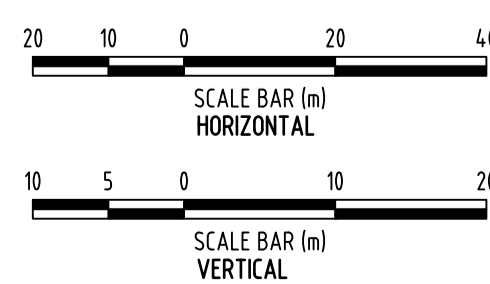
DAM

DATUM RL 46.000	
DESIGN LEVEL	52.976
EXISTING SURFACE	52.976
CHAINAGE	111.002

SECTION A3
SCALE 1:1000H 1500V

DESIGN VOLUME (TO FSL)		
ZONE	CUT m ³	FILL m ³
AREA 'A'	31883	30279

NOTE: DETENTION BASIN YET TO BE SIZED AND INCLUDED IN VOLUMES



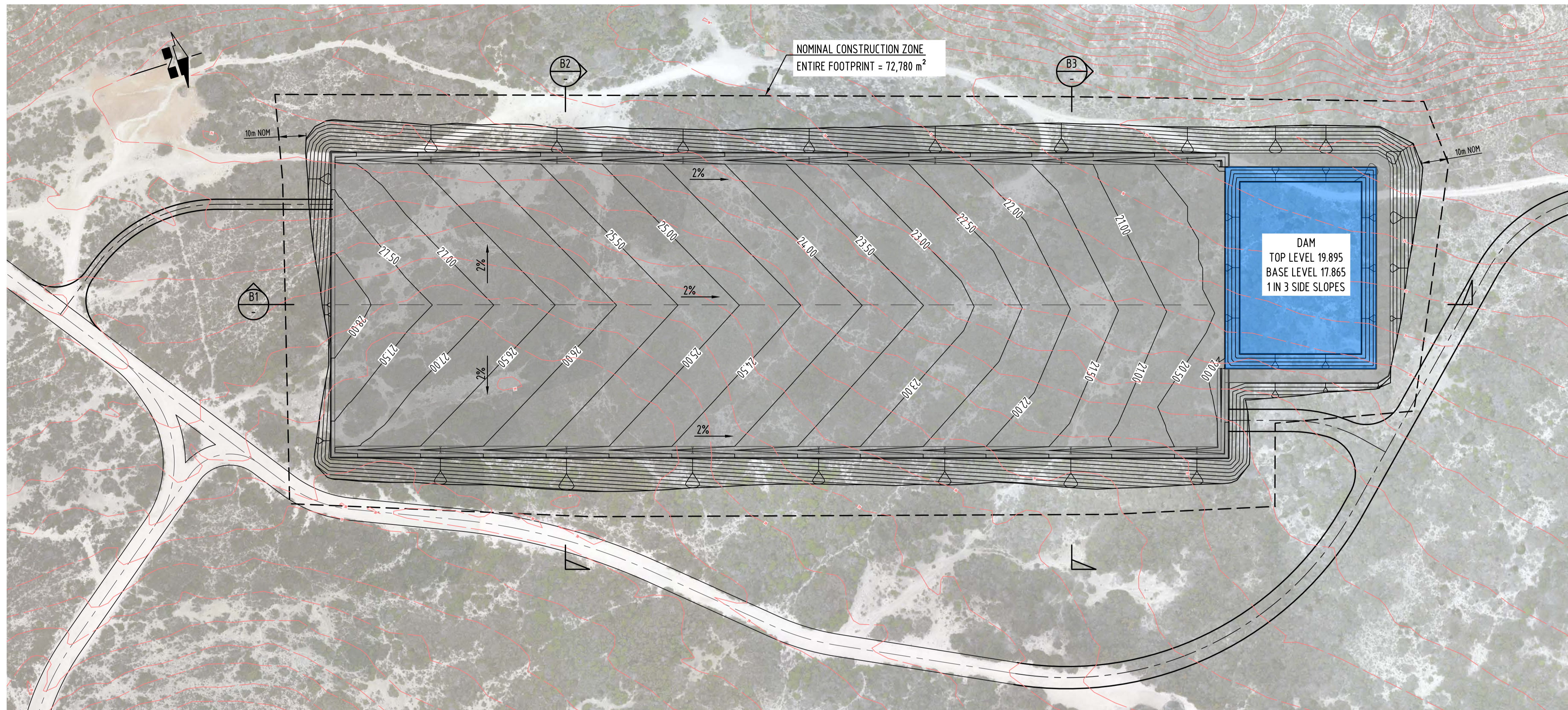
INFORMATION ISSUE
NOT FOR CONSTRUCTION

REV.	DATE	DESCRIPTION	DRAFT	ENG.	CHKD
A	10.08.20	PRELIMINARY ISSUE	TD	TJM	TJM
B	21.08.20	REVISED PRELIMINARY ISSUE	LK	TJM	TJM
C	19.02.21	REVISED PRELIMINARY ISSUE	TD	TJM	TJM

WGA
WALLBRIDGE GILBERT
AZTEC
60 Wyatt Street, Adelaide
South Australia 5000
Telephone 08 8223 7433
Email adelaide@wga.com.au

SOUTHERN LAUNCH
WHALERS WAY, SOUTH AUSTRALIA
EXISTING ALIGNMENT MODIFICATIONS
SITE A - PRELIMINARY EARTHWORKS

A1 DOCUMENT NUMBER
Project Number Sheet No. Rev.
Design Drawn
TM TD
WGA181404-DR-CC-0010 C



NOMINAL CONSTRUCTION ZONE
ENTIRE FOOTPRINT = 72,780 m²

DAM
TOP LEVEL 19.895
BASE LEVEL 17.865
1 IN 3 SIDE SLOPES

DATUM RL 12.000

CHAINAGE	EXISTING SURFACE	DESIGN LEVEL
0	27.214	
6.478	27.240	28.472
10	27.231	28.472
115	27.241	28.472
115.42	27.242	28.993
50	28.445	27.501
100	27.347	26.474
150	26.317	25.446
200	23.588	24.419
249.491	21.917	23.402
250	21.983	23.388
300	20.538	21.442
350	19.162	20.381
364.5	19.317	20.394
370.5	19.163	17.894
400	18.720	17.894
418.5	18.371	17.894
424.5	18.302	19.894
430	18.260	19.894
435.088	18.154	
440	18.106	

SECTION B1
SCALE 1:1000H 1:500V

DATUM RL 16.000

CHAINAGE	EXISTING SURFACE	DESIGN LEVEL
0	21.399	
5.31	22.050	22.067
15	22.837	25.297
18.5	22.909	25.297
18	22.981	24.797
19.5	23.053	25.297
50	25.551	25.906
75.5	27.242	26.416
100	28.940	25.948
131.5	29.486	25.346
133.944	29.478	24.864
135.444	29.070	25.377
135.944	29.450	25.346
144.901	29.648	29.645
150	29.661	
151.001	29.673	

SECTION B2
SCALE 1:1000H 1:500V

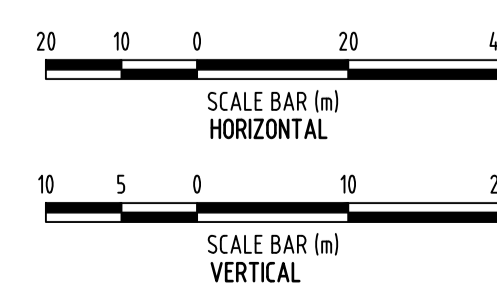
DATUM RL 12.000

CHAINAGE	EXISTING SURFACE	DESIGN LEVEL
0	17.166	
8.288	17.282	17.270
20	17.789	21.174
215	17.856	21.174
23	17.922	20.674
24.5	17.989	21.173
50	18.958	21.287
80.448	20.437	21.295
100	21.925	21.300
136.562	24.114	21.297
138	24.984	20.897
139.5	24.233	21.377
141	24.406	21.317
150	25.050	24.317
152.751	25.233	25.234
156	25.434	

SECTION B3
SCALE 1:1000H 1:500V

DESIGN VOLUME (TO FSL)		
ZONE	CUT m ³	FILL m ³
AREA 'B'	52295	52044

NOTE: DETENTION BASIN YET TO BE SIZED AND INCLUDED IN VOLUMES



INFORMATION ISSUE
NOT FOR CONSTRUCTION

REV.	DATE	DESCRIPTION	DRAFT	ENG.	CHKD
A	10.08.20	PRELIMINARY ISSUE	TD	TJM	TJM
B	21.08.21	REVISED PRELIMINARY ISSUE	LK	TJM	TJM
C	19.02.21	REVISED PRELIMINARY ISSUE	TD	TJM	TJM

WGA
WALLBRIDGE GILBERT
AZTEC
60 Wyatt Street, Adelaide
South Australia 5000
Telephone 08 8223 7433
Email adelaide@wga.com.au

SOUTHERN LAUNCH
WHALERS WAY, SOUTH AUSTRALIA
EXISTING ALIGNMENT MODIFICATIONS
SITE B - PRELIMINARY EARTHWORKS

A1 DOCUMENT NUMBER
Project Number Sheet No. Rev.
Design Drawn
TM TD
WGA181404-DR-CC-0011 C



SECTION D1		SECTION D2																		
DATUM RL 0.000																				
DESIGN LEVEL		10.714	11.172	10.521	10.425	10.426	10.404	10.400	5.400	5.400	5.400	5.400	5.400	5.400	5.400	5.400	5.400	5.400	5.400	5.400
EXISTING SURFACE		10.856	10.831	10.826	10.806	10.801	10.804	10.800	10.852	10.831	10.884	10.884	10.884	10.884	10.884	10.884	10.884	10.884	10.884	10.884
CHAINAGE		0	8.811	9.998	44.696	45.106	50	51.31	66.31	100	156.311	150	152.099	158.903	159.038	167.538	167.627	10.604	10.640	177.519

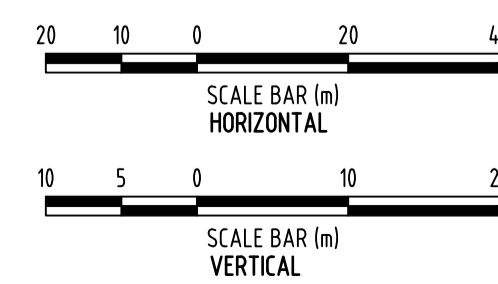
SECTION D1
SCALE 1:1000H 1500V

SECTION D2		SECTION D1																		
DATUM RL 0.000																				
DESIGN LEVEL		11.879	11.884	11.884	11.884	11.884	11.884	11.884	11.884	11.884	11.884	11.884	11.884	11.884	11.884	11.884	11.884	11.884	11.884	11.884
EXISTING SURFACE		10.926	10.709	10.447	10.541	11.184	11.884	11.884	11.884	11.884	11.884	11.884	11.884	11.884	11.884	11.884	11.884	11.884	11.884	11.884
CHAINAGE		0	5.099	24.961	50	69.961	89.218	94.952	100	100	100	100	100	100	100	100	100	100	100	100

SECTION D2
SCALE 1:1000H 1500V

DESIGN VOLUME (TO FSL)		
ZONE	CUT m ³	FILL m ³
AREA 'D'	2834.7	224

NOTE: DETENTION BASIN YET TO BE SIZED AND INCLUDED IN VOLUMES



V:\2018\181400-181400-181400-181400-Southern Launch\Drawings\KGA\181404-DR-CC-0012.dwg, D, 19/02/2021 11:52:AM, TDaves

When sheet printed full size, the scale bar is 100mm.

INFORMATION ISSUE
NOT FOR CONSTRUCTION

REV.	DATE	DESCRIPTION	DRAFT	ENG.	CHKD
A	10.08.20	PRELIMINARY ISSUE	TD	TJM	TJM
B	21.08.20	REVISED PRELIMINARY ISSUE	LK	TJM	TJM
C	10.11.20	REVISED PRELIMINARY ISSUE	TD	TJM	TJM
D	19.02.21	REVISED PRELIMINARY ISSUE	TD	TJM	TJM

WGA
WALLBRIDGE GILBERT
AZTEC
60 Wyatt Street, Adelaide
South Australia 5000
Telephone 08 8223 7433
Email adelaide@wga.com.au

SOUTHERN LAUNCH
WHALERS WAY, SOUTH AUSTRALIA
EXISTING ALIGNMENT MODIFICATIONS
SITE D - PRELIMINARY EARTHWORKS

A1 DOCUMENT NUMBER
Project Number Sheet No. Rev.
Design Drawn
TM TD
WGA181404-DR-CC-0012 D

SOUTHERN LAUNCH

WHALERS WAY

WHALERS WAY ORBITAL LAUNCH COMPLEX

DRAWING INDEX

WGA1814.04-DR-CC-0100	LOCALITY PLAN TURN PATHS
WGA1814.04-DR-CC-0101	SITE PLAN - SHEET 1
WGA1814.04-DR-CC-0102	SITE PLAN - SHEET 2
WGA1814.04-DR-CC-0103	SITE PLAN - SHEET 3
WGA1814.04-DR-CC-0104	SITE PLAN - SHEET 4
WGA1814.04-DR-CC-0105	VERTICAL ALIGNMENT - SHEET1
WGA1814.04-DR-CC-0106	VERTICAL ALIGNMENT - SHEET2
WGA1814.04-DR-CC-0107	VERTICAL ALIGNMENT - SHEET3

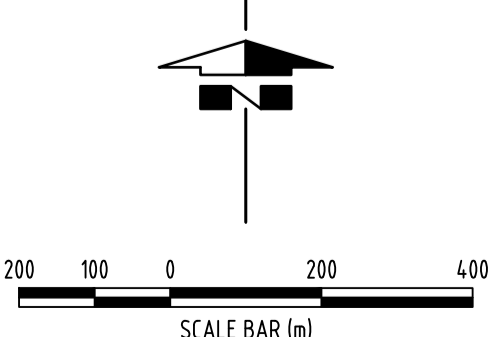


LEGEND

- EXISTING TRACK (TO BE MAINTAINED)
- EXISTING CARRIAGEWAY TO BE WIDENED TO 8.8m
- EXISTING CARRIAGEWAY TO BE WIDENED TO 5.0m
- NEW 8.8m WIDE CARRIAGEWAY
- NEW 4.0m EMERGENCY EGRESS CARRIAGEWAY
- GROUND WATER WELL 6028-1573
(COORDINATES 558977.18 E, 6134909.65 N)

V:\2018\181400-181400-181400-181400-Southern Launch\Drawings\WGA1814.04-DR-CC-0100.dwg, C, 15/02/2021 12:56 PM, L.Using

When sheet printed full size, the scale bar is 100mm.
0 50 100mm



PRELIMINARY ISSUE
NOT FOR CONSTRUCTION

REV.	DATE	DESCRIPTION	DRAFT	ENG.	CHKD
A	21.08.20	PRELIMINARY ISSUE	LK	TJM	TJM
B	10.12.20	SITE D UPDATED	JJF	TJM	TJM
C	15.02.21	UPDATED ISSUE	LK	TJM	TJM

WGA
WALLBRIDGE GILBERT
AZTEC
60 Wyatt Street, Adelaide
South Australia 5000
Telephone 08 8223 7433
Email adelaide@wga.com.au

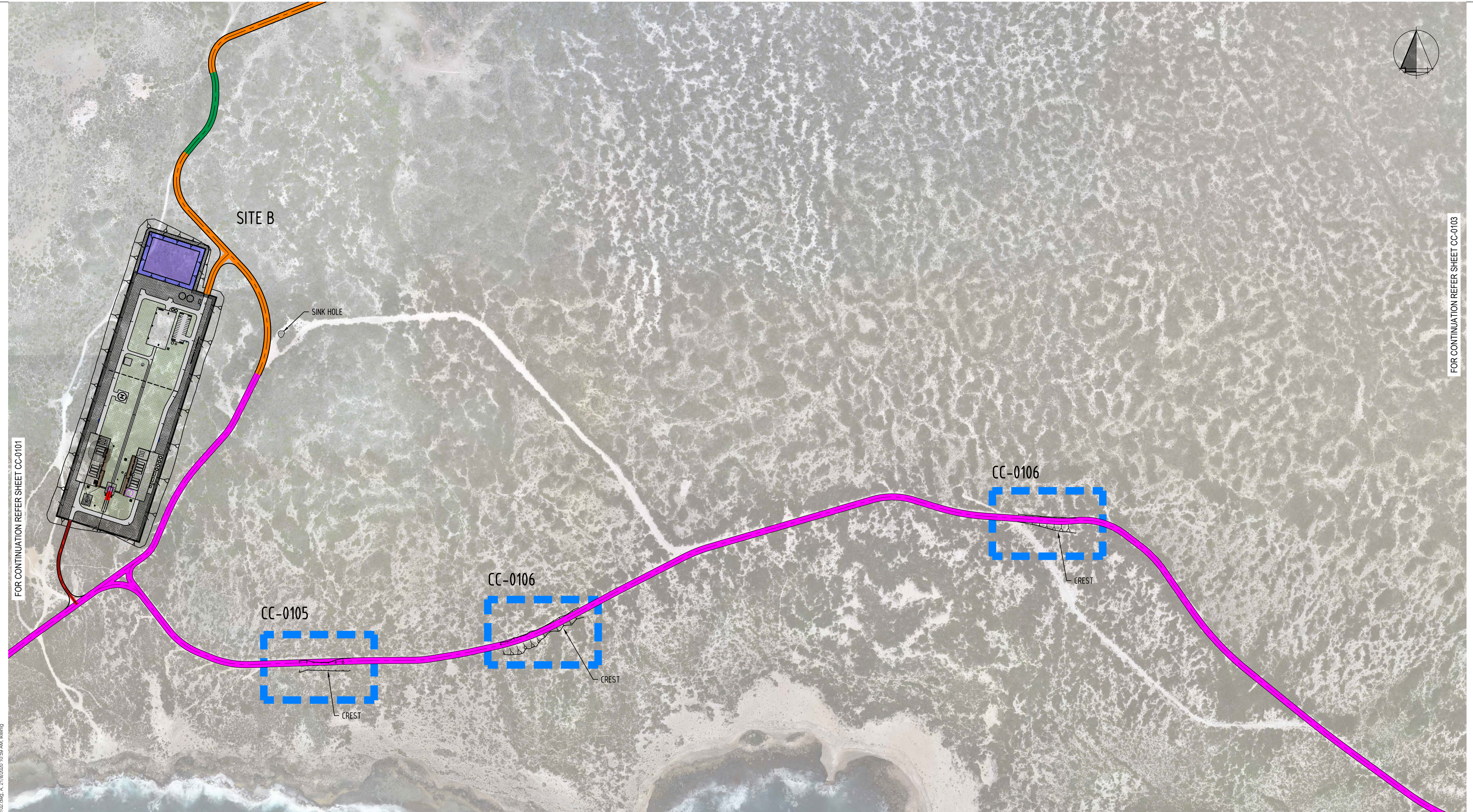
WHALERS WAY
WHALERS WAY, SOUTH AUSTRALIA
EXISTING ALIGNMENT MODIFICATIONS
LOCALITY PLAN

A1 DOCUMENT NUMBER
Project Number Sheet No. Rev.
Design Drawn
TM DSK
WGA181404-DR-CC-0100 C



FOR CONTINUATION REFER SHEET CC-0103

FOR CONTINUATION REFER SHEET CC-0101



PLAN VIEW
SCALE 1:2,500

LEGEND

- EXISTING TRACK (TO BE MAINTAINED)
- EXISTING CARRIAGEWAY TO BE WIDENED TO 8.8m
- EXISTING CARRIAGEWAY TO BE WIDENED TO 5.0m
- NEW 8.8m WIDE CARRIAGEWAY
- NEW 4.0m EMERGENCY EGRESS CARRIAGEWAY

V:\2018\181400-181400-181400-181400-Southern Launch\Drawings\WGA\181404-DR-CC-0102.dwg, A, 21/08/2020 10:59 AM, kwerig

When sheet printed full size, the scale bar is 100mm.
0 50 100mm

50 25 0 50 100
SCALE BAR (m)

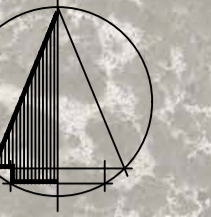
PRELIMINARY ISSUE
NOT FOR CONSTRUCTION

REV.	DATE	DESCRIPTION	DRAFT	ENG.	CHKD
A	21/08/20	PRELIMINARY ISSUE	LK	TJM	TJM

WGA
WALLBRIDGE GILBERT
AZTEC
60 Wyatt Street, Adelaide
South Australia 5000
Telephone 08 8223 7433
Email adelaide@wga.com.au

WHALERS WAY
WHALERS WAY, SOUTH AUSTRALIA
EXISTING ALIGNMENT MODIFICATIONS
SITE PLAN - SHEET 02

A1 DOCUMENT NUMBER
Project Number Sheet No. Rev.
Design Drawn
TM DSK
WGA181404-DR-CC-0102 A



FOR CONTINUATION REFER SHEET CC-0102

FOR CONTINUATION REFER SHEET CC-0104

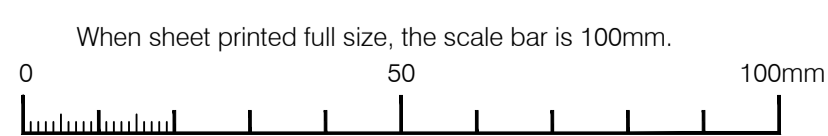


PLAN VIEW
SCALE 1:2,500

LEGEND

- EXISTING TRACK (TO BE MAINTAINED)
- EXISTING CARRIAGEWAY TO BE WIDENED TO 8.8m
- EXISTING CARRIAGEWAY TO BE WIDENED TO 5.0m
- NEW 8.8m WIDE CARRIAGEWAY
- NEW 4.0m EMERGENCY EGRESS CARRIAGEWAY

V:\2018\181404-181404-181404-181404-Southern Launch\Drawings\WGA\181404-DR-CC-0103.dwg, A, 21/8/2020 11:00 AM, kwaning



INFORMATION ISSUE
NOT FOR CONSTRUCTION

REV.	DATE	DESCRIPTION	DRAFT	ENG.	CHKD
A	21/08/20	PRELIMINARY ISSUE	LK	TJM	TJM

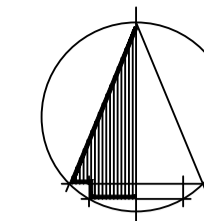
WGA
WALLBRIDGE GILBERT
AZTEC

60 Wyatt Street, Adelaide
South Australia 5000
Telephone 08 8223 7433
Email adelaide@wga.com.au

WHALERS WAY
WHALERS WAY, SOUTH AUSTRALIA
EXISTING ALIGNMENT MODIFICATIONS
SITE PLAN - SHEET 03

Design	Drawn	DOCUMENT NUMBER	Sheet No.	Rev.
TM	DSK	WGA181404-DR-CC-0103	A	

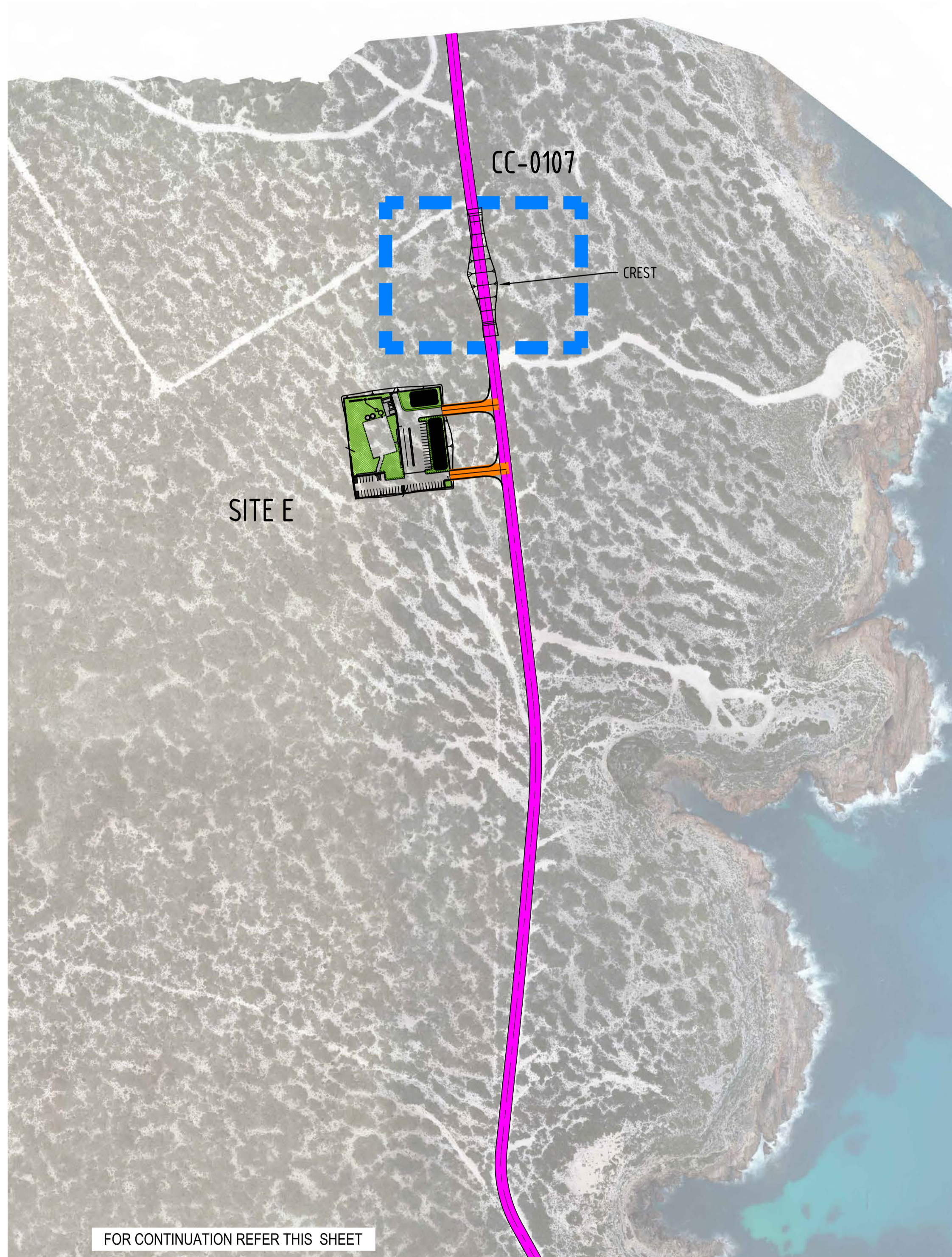
FOR CONTINUATION REFER THIS SHEET



CC-0107

CREST CURVE

FOR CONTINUATION REFER SHEET CC-0103




CC-0107

CREST

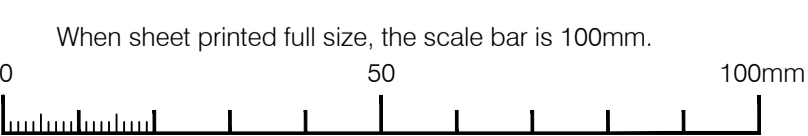
SITE E

FOR CONTINUATION REFER THIS SHEET

LEGEND

-  EXISTING TRACK (TO BE MAINTAINED)
-  EXISTING CARRIAGEWAY TO BE WIDENED TO 8.8m
-  EXISTING CARRIAGEWAY TO BE WIDENED TO 5.0m
-  NEW 8.8m WIDE CARRIAGEWAY
-  NEW 4.0m EMERGENCY EGRESS CARRIAGEWAY

V:\2018\181400-181404-181404-DR-CC-0104.dwg, B, 15/02/2021 12:38 PM, Ushing



PLAN VIEW
SCALE 1:2,500



PRELIMINARY ISSUE
NOT FOR CONSTRUCTION

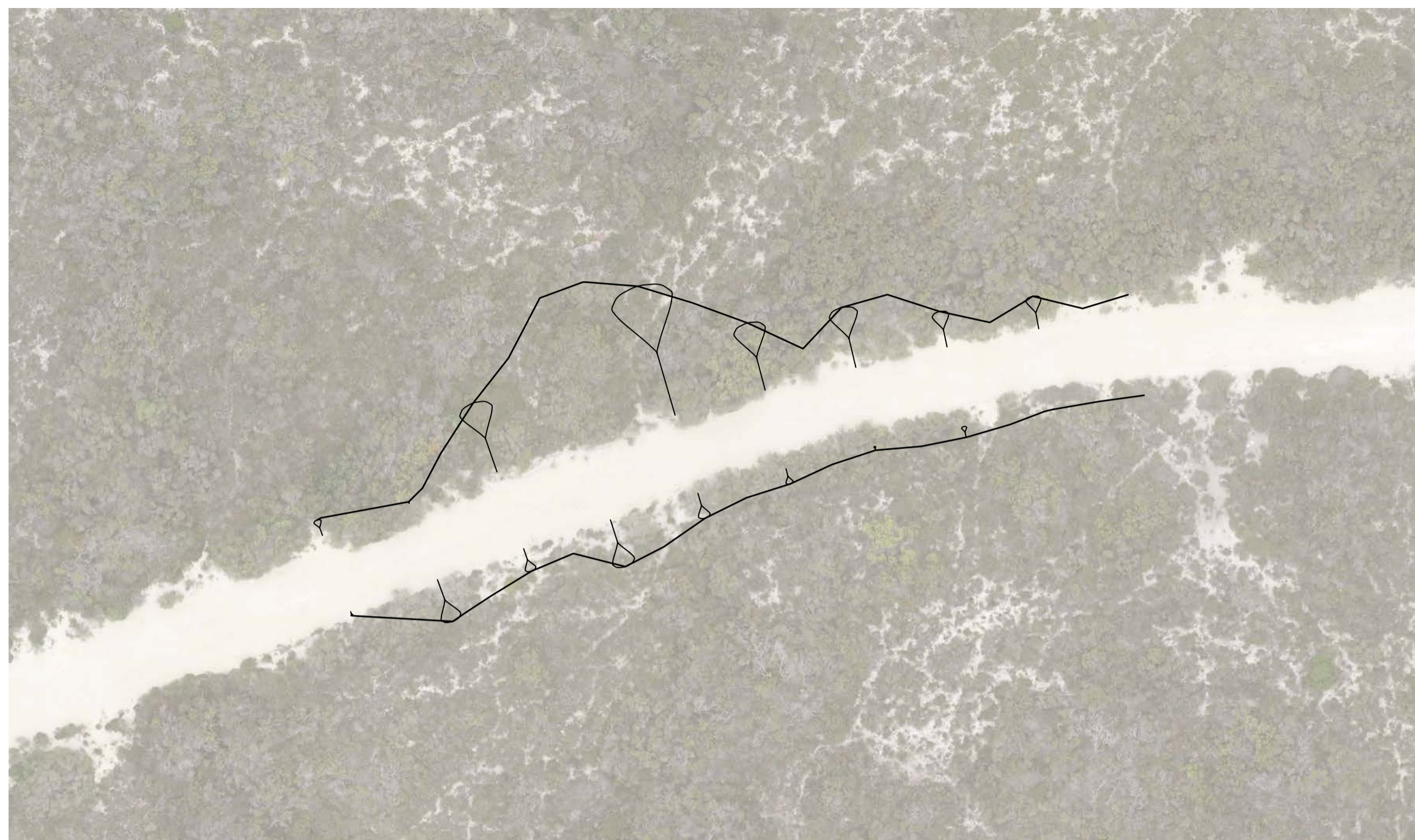
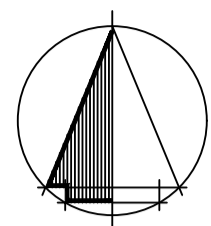
REV.	DATE	DESCRIPTION	DRAFT	ENG.	CHKD
A	21.08.20	PRELIMINARY ISSUE	LK	TJM	TJM
B	15.02.21	UPDATED ISSUE	LK	TJM	TJM

WGA
WALLBRIDGE GILBERT
AZTEC

60 Wyatt Street, Adelaide
South Australia 5000
Telephone 08 8223 7433
Email adelaide@wga.com.au

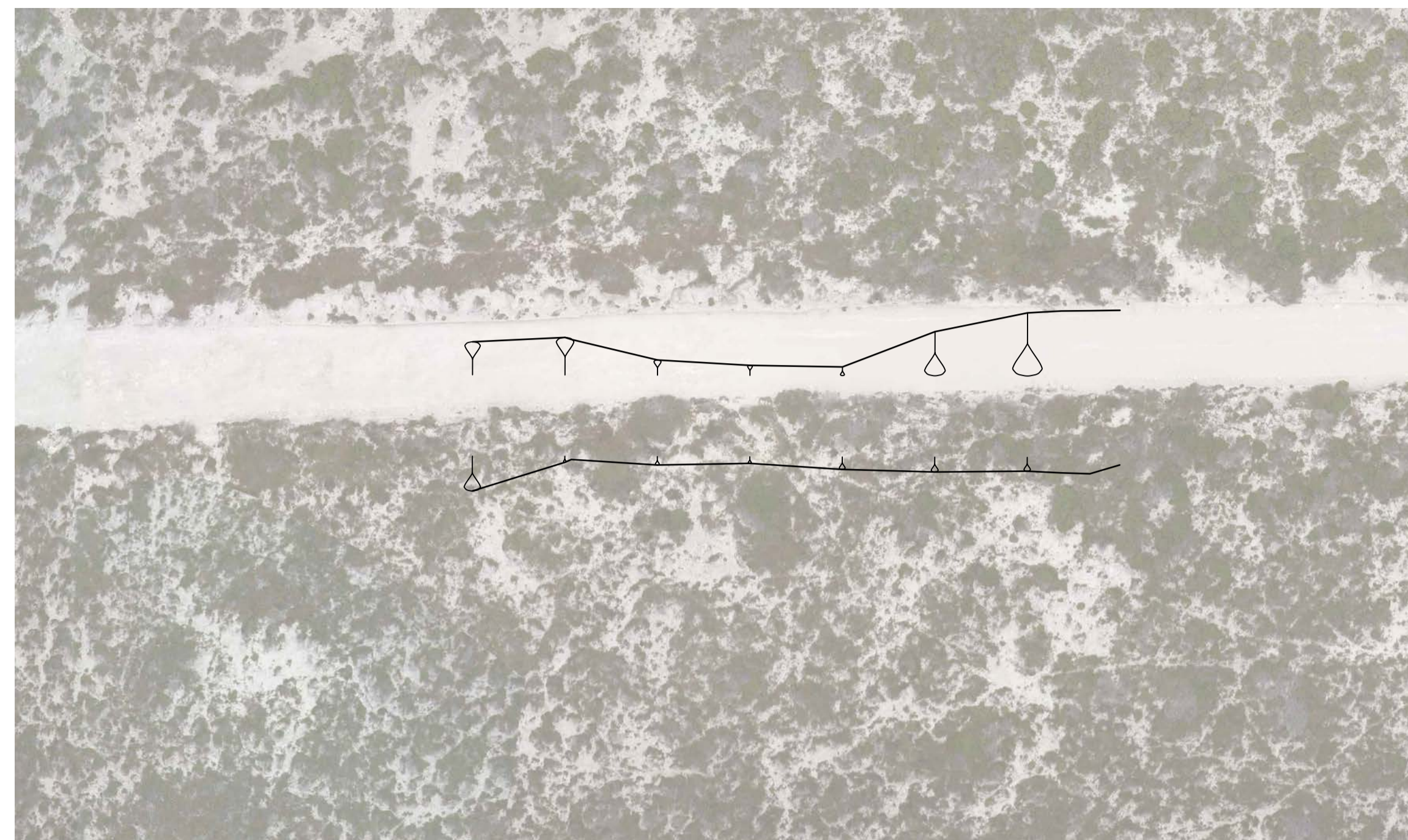
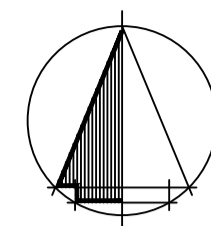
WHALERS WAY
WHALERS WAY, SOUTH AUSTRALIA
EXISTING ALIGNMENT MODIFICATIONS
SITE PLAN - SHEET 04

A1	DOCUMENT NUMBER	Project Number	Sheet No.	Rev.
Design TM	Drawn DSK	WGA181404-DR-CC-0104		B



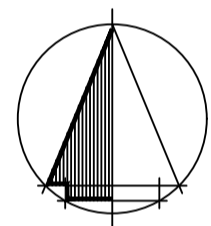
PLAN VIEW

SCALE 1:500



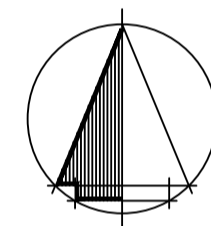
PLAN VIEW

SCALE 1:500



PLAN VIEW

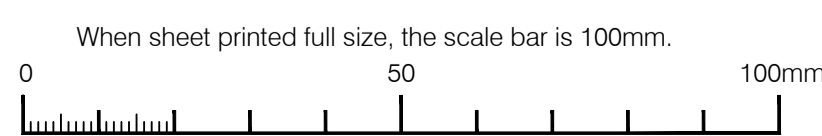
SCALE 1:500



PLAN VIEW

SCALE 1:500

V:\2018\181400-18189\181404-Southern Launch\Drawings\WGA\181404-DR-CC-0105.dwg, A, 7/8/2020 4:07 PM, helling



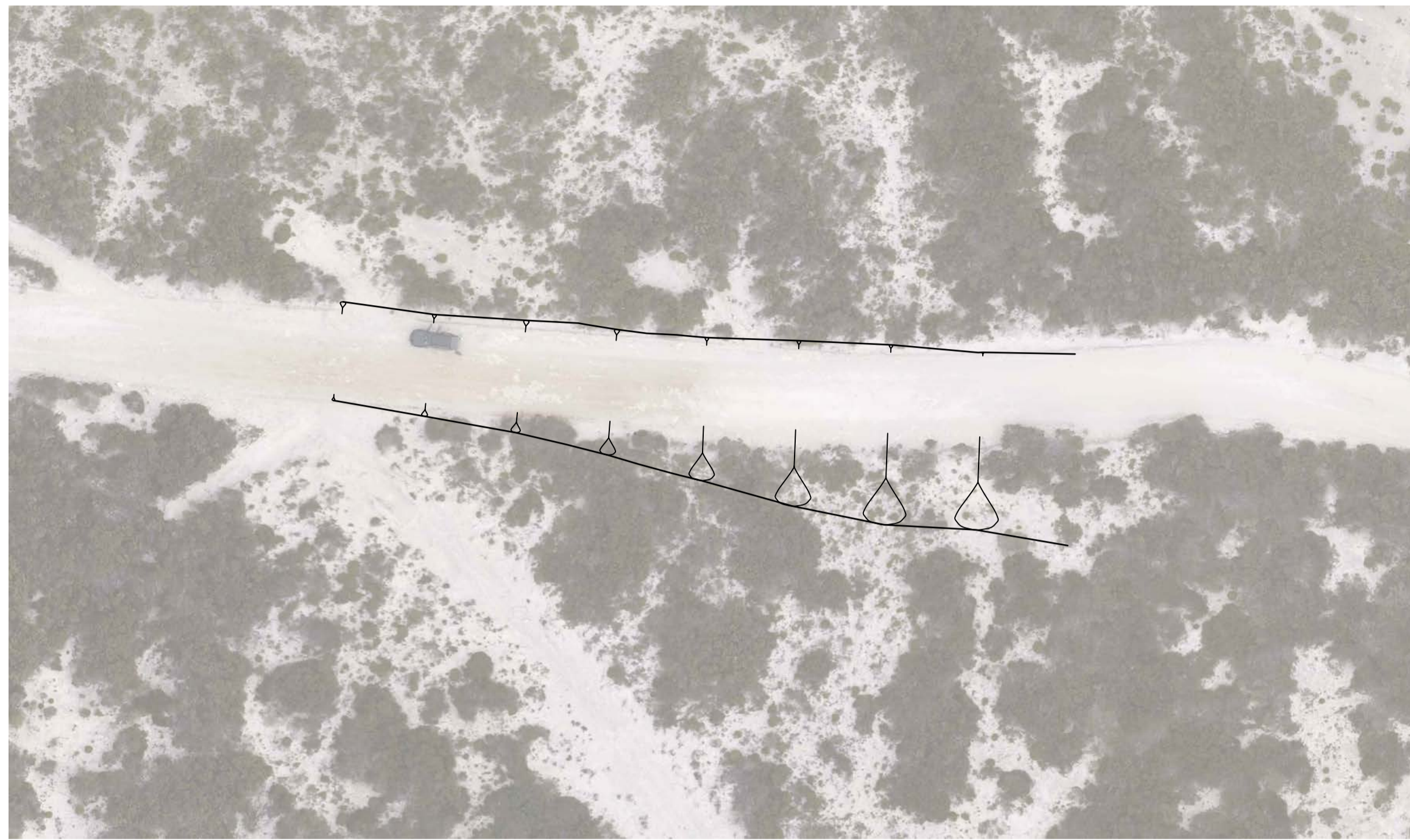
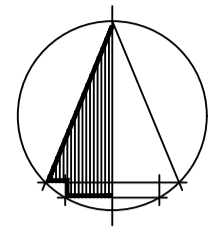
PRELIMINARY ISSUE
NOT FOR CONSTRUCTION

REV.	DATE	DESCRIPTION	DRAFT	ENG.	CHKD
A	21/08/20	PRELIMINARY ISSUE	LK	TJM	TJM

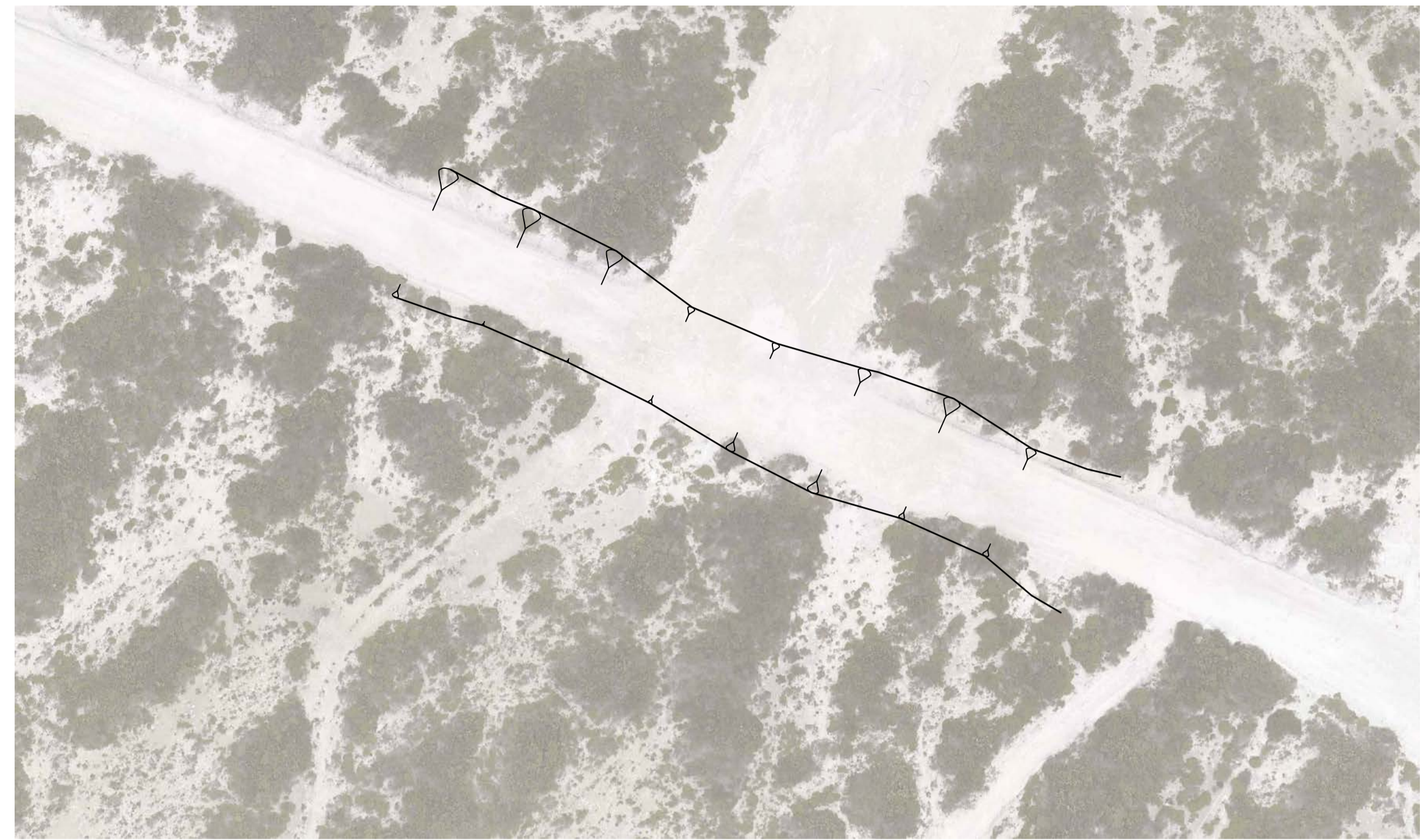
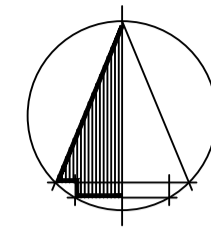
WGA
WALLBRIDGE GILBERT
AZTEC
60 Wyatt Street, Adelaide
South Australia 5000
Telephone 08 8223 7433
Email adelaide@wga.com.au

WHALERS WAY
WHALERS WAY, SOUTH AUSTRALIA
EXISTING ALIGNMENT MODIFICATIONS
VERTICAL ALIGNMENT - SHEET 1

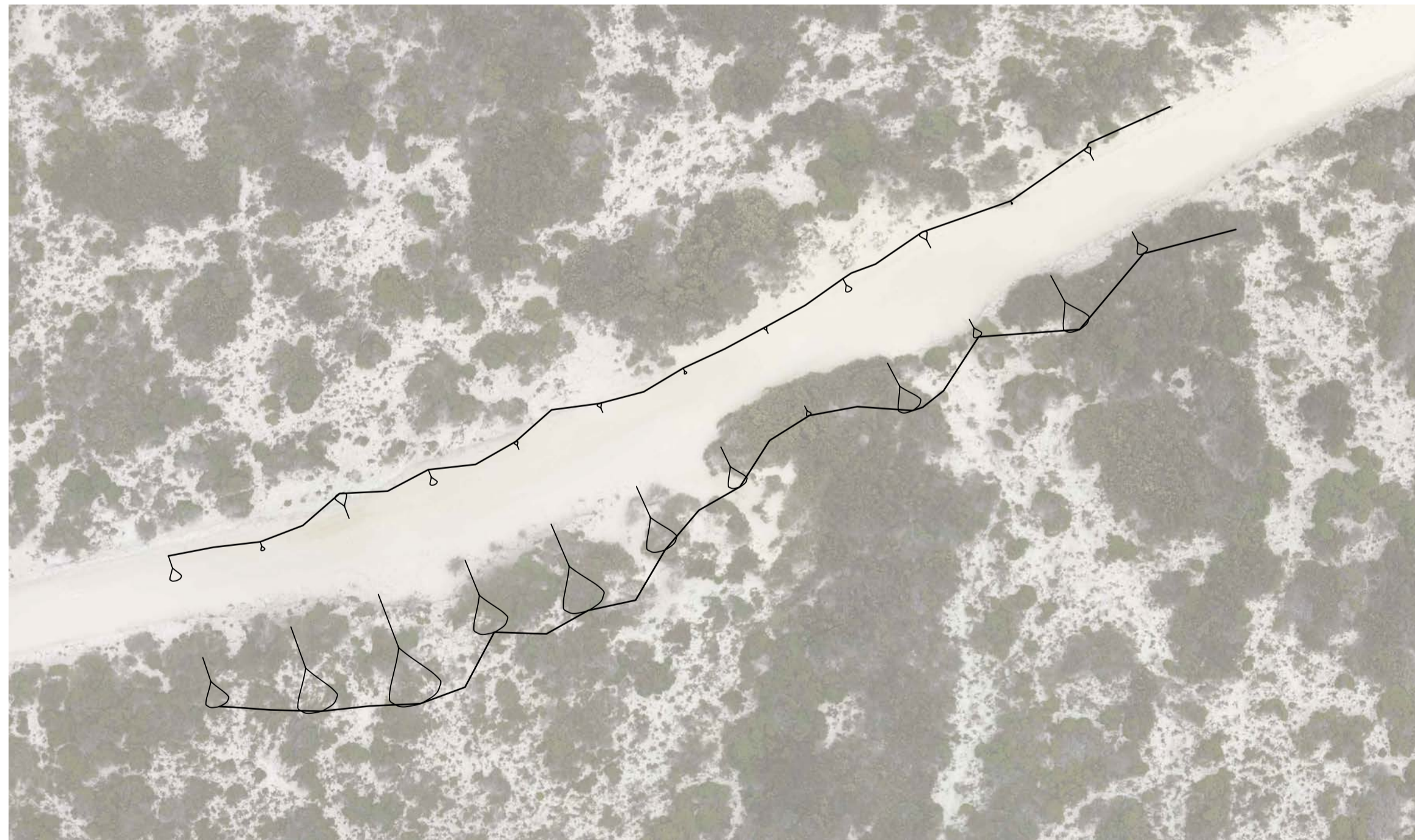
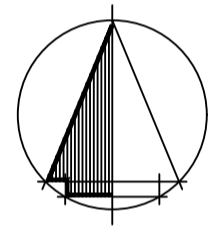
A1 DOCUMENT NUMBER
Design Drawn
TM DSK
Project Number Sheet No. Rev.
WGA181404-DR-CC-0105 A



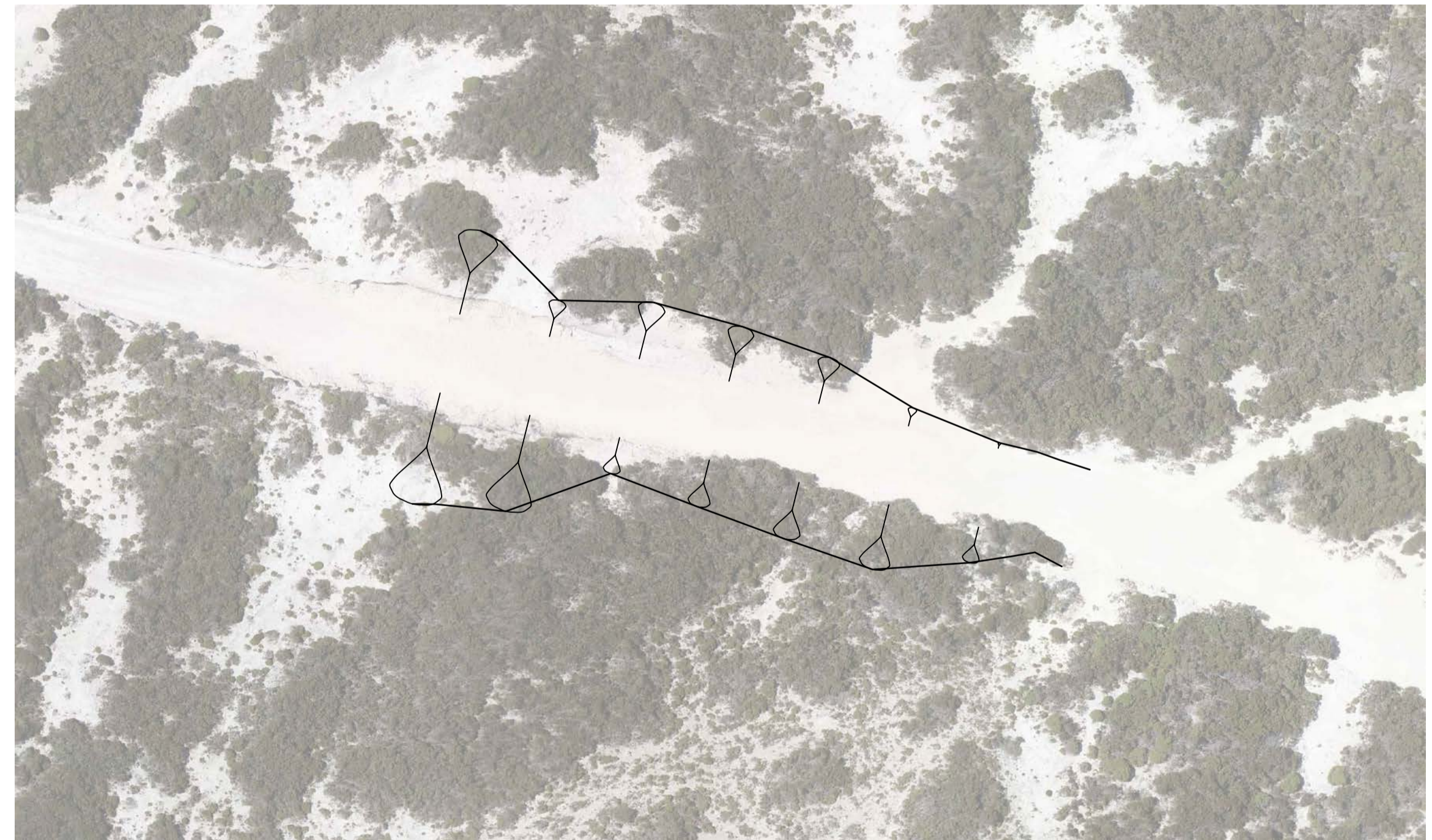
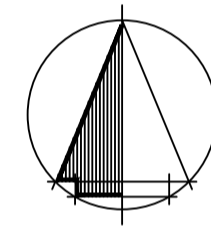
PLAN VIEW
SCALE 1:500



PLAN VIEW
SCALE 1:500



PLAN VIEW
SCALE 1:500



PLAN VIEW
SCALE 1:500

V:\2018\181400-181400-181400-181400-Southern Launch\Drawings\WGA\181404-DR-CC-0106.dwg, A, 7/8/2020 4:09 PM, Meeting

When sheet printed full size, the scale bar is 100mm.
0 50 100mm

10 5 0 10 20
SCALE BAR (m)

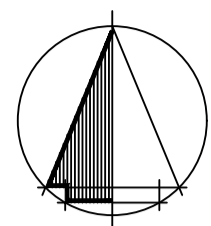
PRELIMINARY ISSUE
NOT FOR CONSTRUCTION

REV.	DATE	DESCRIPTION	DRAFT	ENG.	CHKD
A	21/08/20	PRELIMINARY ISSUE	LK	TJM	TJM

WGA
WALLBRIDGE GILBERT
AZTEC
60 Wyatt Street, Adelaide
South Australia 5000
Telephone 08 8223 7433
Email adelaide@wga.com.au

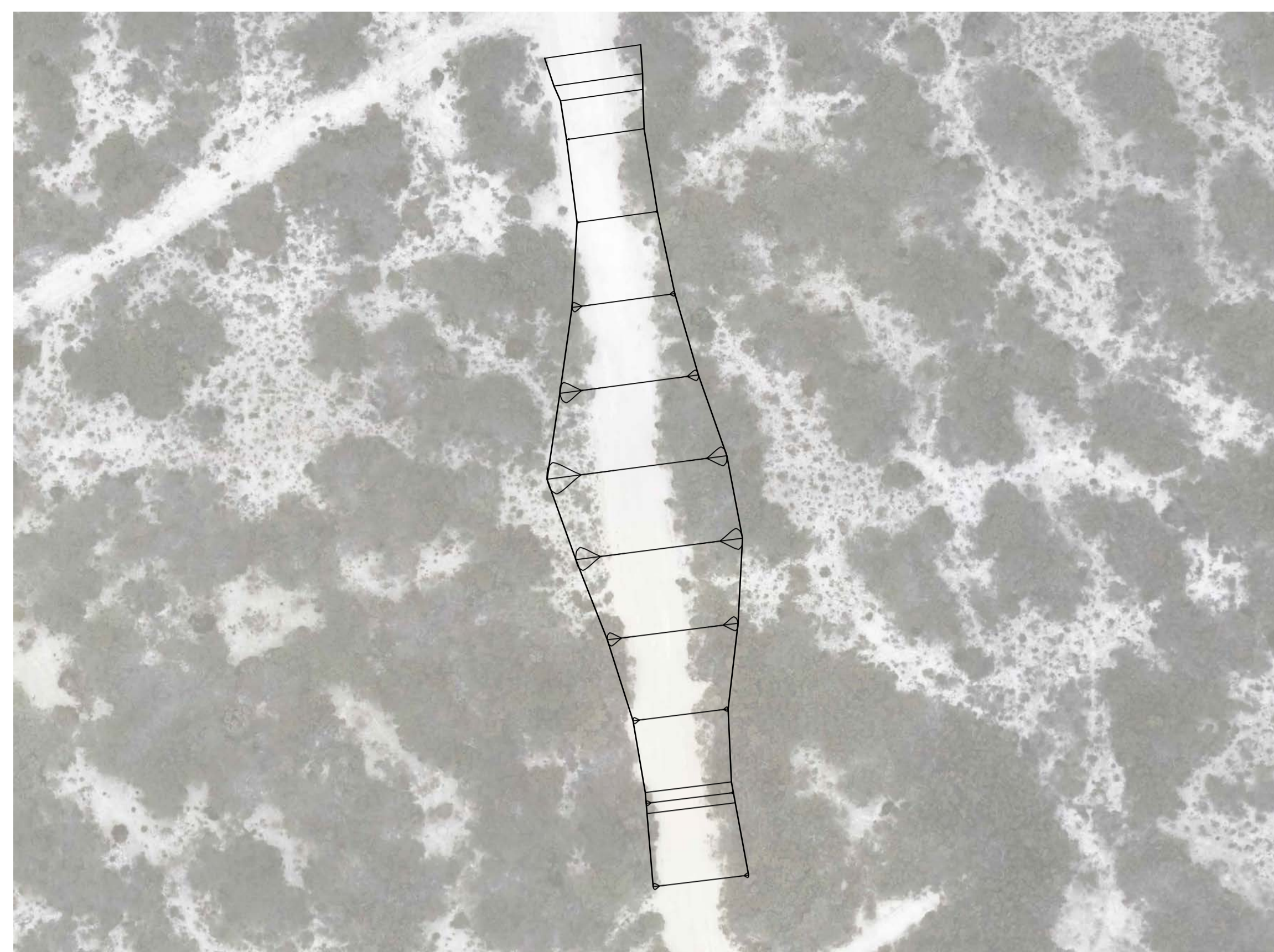
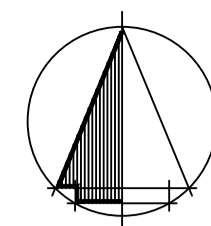
WHALERS WAY
WHALERS WAY, SOUTH AUSTRALIA
EXISTING ALIGNMENT MODIFICATIONS
VERTICAL ALIGNMENT - SHEET 2

A1 DOCUMENT NUMBER
Project Number Sheet No. Rev.
Design Drawn
TM DSK
WGA181404-DR-CC-0106 A



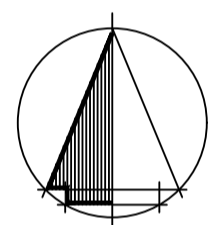
PLAN VIEW

SCALE 1:500



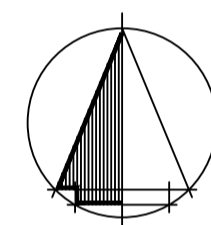
PLAN VIEW

SCALE 1:500



PLAN VIEW

SCALE 1:500



PLAN VIEW

SCALE 1:500

V:\2018\181400-181400-181400-181400-Southern Launch\Drawings\WGA\181404-DR-CC-0107.dwg, A, 7/8/2020 4:10 PM, Meeting

When sheet printed full size, the scale bar is 100mm.
0 50 100mm

10 5 0 10 20
SCALE BAR (m)

PRELIMINARY ISSUE
NOT FOR CONSTRUCTION

REV.	DATE	DESCRIPTION	DRAFT	ENG.	CHKD
A	21/08/20	PRELIMINARY ISSUE	LK	TJM	TJM

WGA
WALLBRIDGE GILBERT
AZTEC
60 Wyatt Street, Adelaide
South Australia 5000
Telephone 08 8223 7433
Email adelaide@wga.com.au

WHALERS WAY
WHALERS WAY, SOUTH AUSTRALIA
EXISTING ALIGNMENT MODIFICATIONS
VERTICAL ALIGNMENT - SHEET 3

A1 DOCUMENT NUMBER
Project Number Sheet No. Rev.
Design Drawn
TM DSK **WGA181404-DR-CC-0107 A**