

# Road crashes in South Australia

Statistical summary of road crashes  
and casualties in 2023



**ROAD  
SAFETY**



Government of  
South Australia

We acknowledge the Traditional Custodians of the Country throughout South Australia and recognise their continuing connection to land and waters. We pay our respects to the diversity of cultures, significance of contributions and to Elders past, present and emerging.

## Disclaimer

While every reasonable effort has been made to ensure that this document is correct at the time of publication, the Minister for Infrastructure and Transport, its agencies, instrumentalities, employees and contractors disclaim any and all liability to any person in respect to anything or the consequence of anything done or omitted to be done in reliance upon the whole or any part of this document.

## Prepared by Department for Infrastructure and Transport

Only available in electronic format from the Department for Infrastructure and Transport's [THINK! Road Safety](#) website:

## Further Information

For further information concerning road crash statistics for South Australia, write to the

Department for Infrastructure and Transport  
GPO Box 1533  
ADELAIDE SA 5000  
Email: [DIT.CommunityRelations@sa.gov.au](mailto:DIT.CommunityRelations@sa.gov.au)

*Full Title:* Road crashes in South Australia: Statistical summary of road crashes and casualties in 2023  
*Type of Report and Period Covered:* Statistical, 2023  
*Pages:* 63

ISSN 2653-1224

*Key Words:* crash, crash rate, casualty, serious injury, injuries, age, blood alcohol concentration, day, hour, fatality, month, road user, severity, sex, vehicle movement, year, statistical

**The data presented in this report is for information purposes only and should be used with care before drawing conclusions not contained in this report. Numbers may not match with future publications due to the database continually being updated with new information.**

© Department for Infrastructure and Transport, the Government of South Australia, 2023. This work is licensed under the Creative Commons Attribution 4.0 Licence which allows re-users to copy and distribute the work in any medium or format in unadapted form only, and only so long as attribution is given to the Department for Infrastructure and Transport, the Government of South Australia. The license allows for commercial use. All other rights are reserved.

Re-users of this work are required to attribute the work as follows: Department for Infrastructure and Transport, the Government of South Australia, >>Road Crashes in South Australia: Statistical Summary of Road Crashes & Casualties in 2023<<, Sourced on >>insert date the content was sourced<<, >>thinkroadsafety.sa.gov.au <<

# Contents

<b>KEY POINTS 2023</b>	<b>3</b>
<b>SUMMARY DATA FOR 2023</b>	<b>5</b>
<b>PREFACE</b>	
How are crashes processed?	6
Scope	6
Related reports	7
Acknowledgements	7
Definitions and explanatory notes	7
<b>CRASH AND CASUALTY TRENDS</b>	
Table 1 Trends in South Australia, 1995 - 2023	10
Figure 1 <i>Data Trends in South Australia, 1995 - 2023</i>	11
Figure 2 <i>Fatality Rate in South Australia, 1995 - 2023</i>	11
Table 2 Comparison with other Australian Jurisdictions, 2023	12
Table 3a Road Crash Lives Lost by Age Group compared with Deaths Registered in South Australia, 2022	12
Table 3b Age of Passenger Vehicles Involved in Serious Casualty Crashes, 2018 - 2023	12
Table 4 Casualties by Road User Type and Severity, 1995 - 2023	13
Table 5 Casualties by Age Group and Severity, 1995 - 2023	14
Table 6 Casualties by Sex and Severity, 1995 - 2023	15
Table 7 Crashes and Casualties by Region and Severity, 1995 - 2023	16
<b>ROAD CRASHES in 2023</b>	<b>17</b>
<b>Time Distribution of Crashes</b>	
Table 8 Crashes and Casualties during Holiday Periods by Severity	18
Table 9a Casualty Crashes by Time of Day, Day of Week	19
Figure 3 <i>Casualty Crashes by Time of Day, Day of Week</i>	19
Table 9b Casualties by Time of Day, Day of Week	20
Table 9c All Crashes by Time of Day, Day of Week	20
Table 10 Crashes and Casualties by Month of Year and Severity	20
<b>Crash Type</b>	
Table 11a Crashes and Casualties by Crash Type and Severity: <i>Metropolitan Adelaide</i>	21
Table 11b Crashes and Casualties by Crash Type and Severity: <i>Regional</i>	21
Table 11c Crashes and Casualties by Crash Type and Severity: <i>South Australia</i>	22
Table 12 Hit Fixed Object Crashes by Object First Hit and Severity	22
Table 13 Single Vehicle Crashes by Motor Vehicle Type and Severity	22
Figure 4 <i>Definition for Coding Accidents Table</i>	23
Table 14a Crashes and Casualties by Crash Type Code and Severity: <i>Metropolitan Adelaide</i>	24
Table 14b Crashes and Casualties by Crash Type Code and Severity: <i>Regional</i>	26
Table 14c Crashes and Casualties by Crash Type Code and Severity: <i>South Australia</i>	28
<b>Location &amp; Distribution of Crashes</b>	
Table 15a Crashes and Casualties by Location Type and Severity: <i>Metropolitan Adelaide</i>	30
Table 15b Crashes and Casualties by Location Type and Severity: <i>Regional</i>	30
Table 15c Crashes and Casualties by Location Type and Severity: <i>South Australia</i>	31
Table 16a Crashes and Casualties by Traffic Control and Severity: <i>Metropolitan Adelaide</i>	31
Table 16b Crashes and Casualties by Traffic Control and Severity: <i>Regional</i>	32
Table 16c Crashes and Casualties by Traffic Control and Severity: <i>South Australia</i>	32
Table 17 Crashes and Casualties by Area Speed Limit, Region & Severity	33
Table 18 Crashes and Casualties by Light Conditions, Region & Severity	33
Table 19 Crashes and Casualties by Vertical Alignment, Region & Severity	34
Table 20 Crashes and Casualties by Horizontal Alignment, Region & Severity	34
Table 21 Crashes and Casualties by Road Moisture, Region & Severity	35
Table 22 Crashes and Casualties by Route and Severity	35
Table 23a Crashes and Casualties by Local Government Area and Severity: <i>Metropolitan Adelaide: Council Roads</i>	36
Table 23b Crashes and Casualties by Local Government Area and Severity: <i>Metropolitan Adelaide: Departmental Roads</i>	37
Table 23c Crashes and Casualties by Local Government Area and Severity: <i>Metropolitan Adelaide: All Roads</i>	38
Table 24a Crashes and Casualties by Local Government Area and Severity: <i>Regional: Council Roads</i>	39
Table 24b Crashes and Casualties by Local Government Area and Severity: <i>Regional: Departmental Roads</i>	41
Table 24c Crashes and Casualties by Local Government Area and Severity: <i>Regional: All Roads</i>	43
Table 25 Top Intersections with highest number of Casualty Crashes 2023	45

<b>Motor Vehicle Type, Movement &amp; Involvement</b>	
Table 26 Motor Vehicles Involved in and Responsible for Crashes by Region and Severity	46
Table 27 Crashes and Casualties by Vehicle Movement of Motor Vehicle Responsible and Severity	47
Table 28 Crashes and Casualties by Pedestrian Responsible, Movement and Severity	47
Table 29 Crashes by Motor Vehicle Type Involved and Severity	48
<b>Speed Involvement</b>	
Table 30 Crashes and Casualties by Speed Involvement and Severity	48
<b>CASUALTIES in 2023</b>	<b>49</b>
<b>Road User</b>	
Table 31 Casualties by Road User Type, Severity, Age & Sex	50
Table 32 Casualties by Unit Type and Severity	51
Table 33 Motor Vehicle Casualties by Position in Vehicle and Severity	51
<b>Seatbelts &amp; Helmets</b>	
Table 34 Casualties by Road User Type, Safety Device and Severity	52
<b>Alcohol</b>	
Table 35 Driver and Motorcycle Rider Casualties with BAC	53
<b>Drugs</b>	
Table 36 Driver and Motorcycle Rider Casualties with Drugs	53
<b>Responsibility</b>	
Table 37a Road User Involved in and Responsible for Crashes by Age & Sex: <i>Fatal Crashes</i>	54
Table 37b Road User Involved in and Responsible for Crashes by Age & Sex: <i>Serious Injury Crashes</i>	55
Table 37c Road User Involved in and Responsible for Crashes by Age & Sex: <i>Minor Injury Crashes</i>	56
Table 37d Road User Involved in and Responsible for Crashes by Age & Sex: <i>Property Damage Crashes</i>	57
Table 37e Road User Involved in and Responsible for Crashes by Age & Sex: <i>All Crashes</i>	58
Table 38 Drivers & Motorcycle Riders Involved in and Responsible for Crashes by Licence Type and Severity	59
Table 39a Drivers & Motorcycle Riders Responsible for Crashes by Licence Type and Age: <i>Fatal Crashes</i>	59
Table 39b Drivers & Motorcycle Riders Responsible for Crashes by Licence Type and Age: <i>Serious Injury Crashes</i>	60
Table 39c Drivers & Motorcycle Riders Responsible for Crashes by Licence Type and Age: <i>Minor Injury Crashes</i>	60
Table 39d Drivers & Motorcycle Riders Responsible for Crashes by Licence Type and Age: <i>Property Damage Crashes</i>	61
Table 39e Drivers & Motorcycle Riders Responsible for Crashes by Licence Type and Age: <i>All Crashes</i>	61
<b>REFERENCE INFORMATION for South Australia</b>	<b>62</b>
<b>Demographic Data</b>	
Table 40 Estimated Population by Age and Sex	63
Table 41 Licence and Permit Holders by Age and Sex	63
<b>Vehicle Information</b>	
Table 42 Motor Vehicle on Register by Vehicle Type	64
Table 43 Vehicle Kilometres Travelled by Jurisdiction	64

# Key points

---

A total of 13,066 crashes were processed for South Australia in 2023.

- 109 fatal crashes
- 712 serious injury crashes
- 2,910 minor injury crashes
- 9,335 property damage crashes.

This resulted in 117 lives lost, 824 serious injuries and 3,644 minor injuries.

The 117 lives lost that occurred in 2023 resulted in a fatality rate of 6.3 per 100,000 population. This is above the national figure of 4.8.

## Greater Adelaide area

The number of fatal crashes resulting in lives lost in the Greater Adelaide area increased in 2023 compared to 2022, as did the number of serious injury crashes.

There were 61 fatal crashes, 30 more than the previous year and 25 more than the previous 2018 to 2022 five-year average.

There were 455 serious injury crashes in 2023, this is a 35% increase from the 338 in 2022 and is 10% above the previous 2018 to 2022 five-year average of 416 each year.

Within Greater Adelaide, 23% of fatal crashes in 2023 were at intersections, down from 29% in 2022.

## Regional areas

Fatal crashes resulting in lives lost have increased in regional areas in 2023 compared to 2022. There were 48 fatal crashes in regional areas in 2023, 11 less than 2022 and two below the previous 2018 to 2022 five-year average.

Serious injury crashes increased from 237 in 2022 to 257 in 2023. This is also an increase on the previous 2018 to 2022 five-year average of 210 each year.

In regional areas, 60% of fatal crashes were single vehicle crashes, such as a vehicle rolling over or hitting objects such as trees. This is a decrease from 70% in 2022.

## Young road users

The number of 16 to 19 year olds who lost their life decreased from nine in 2022 to five in 2023. This is five less lives lost each year than the previous 2018 to 2022 five-year average. The number of lives lost in the 20 to 24 year old range increased by one, from seven in 2022 to eight in 2023. The previous 2018 to 2022 five-year average was 10 lives lost each year.

The number of 16 to 24 year olds seriously injured increased from 120 in 2022 to 147 in 2023. This is seven above the 2018 to 2022 five-year average of 140 for 16 to 24 year olds seriously injured each year.

## Older road users

The number of people aged 70 or over who lost their life increased from 11 in 2022 to 23 in 2023. This is the second highest during the last five-year period and five more than the 2018 to 2022 five-year average.

Serious injuries increased from 83 in 2022 to 103 in 2023. The previous 2018 to 2022 five-year average is 92 serious injuries for this age group each year.

## Drivers

Drivers, including heavy vehicle drivers, who lost their life increased from 38 in 2022 to 53 in 2023. Passengers who lost their life also increased from 9 in 2022 to 12 in 2023. The previous 2018 to 2022 five-year average shows 46 drivers and 13 passengers lost their lives each year.

Drivers, including heavy vehicle drivers, who were seriously injured increased from 268 in 2022 to 348 in 2023. Passengers seriously injured also increased from 106 in 2022 to 116 in 2023. The previous 2018 to 2022 five-year average shows 304 drivers and 103 passengers were serious injured each year.

## Motorcyclists

The number of lives lost increased from 13 in 2022 to 23 in 2023. The 2018 to 2022 five-year average of motorcyclists killed is 16 per year.

Serious injuries increased from 147 in 2022 to 199 in 2023, higher than the previous 2018 to 2022 five-year average of 168 serious injuries each year.

## Pedestrians<sup>1</sup>

The number of lives lost increased from eight in 2022 to 19 in 2023. This number is above the average of 11 deaths per year over the previous five years (2018 to 2022).

Serious injuries decreased for pedestrians from 76 in 2022 to 64 in 2023. This is below the 2018 to 2022 five-year average of 71 pedestrians serious injured each year.

## Cyclists

The number of lives lost increased from three in 2022 to eight in 2023. The previous 2018 to 2022 five-year average of cyclists killed is five per year.

The number of cyclists serious injured has also increased from 53 in 2022 to 89 in 2023. The previous 2018 to 2022 five-year average of cyclists seriously injured is 73 per year.

## Seatbelts

In 2023, 21% of drivers and passengers who lost their life were not wearing a seatbelt at the time of the crash. An increase compared to 36% in 2022.

---

<sup>1</sup> Pedestrians include personal mobility devices (PMD), gopher and wheelchair users

# Summary data for 2023

	Number
<b>Crashes</b>	
Fatal crashes	109
Serious injury crashes	712
Minor injury crashes	2 910
Property damage crashes	9 335
<b>Total</b>	<b>13 066</b>
<b>Casualties</b>	
Lives lost	117
Serious injuries	824
Minor injuries	3 644
<b>Total</b>	<b>4 585</b>
<b>Other data</b>	
<b>Vehicles on motor vehicle register<sup>1</sup></b>	<b>1 599 329</b>
Lives lost per 10 000 vehicles	0.73
Serious injuries per 10 000 vehicles	5.15
Casualties per 10 000 vehicles	28.67
<b>Licence holders<sup>2</sup></b>	<b>1 351 711</b>
Driver/rider lives lost per 10 000 licence holders	0.56
Driver/rider serious injuries per 10 000 licence holders	3.96
Driver/rider casualties per 10 000 licence holders	22.45
<b>Population<sup>3</sup></b>	<b>1 851 704</b>
Lives lost per 100 000 population	6.32
Serious injuries per 100 000 population	44.50
Casualties per 100 000 population	247.61

<sup>1</sup> Excludes trailers, caravans, plant and equipment. Source: Department for Infrastructure and Transport, June 2023.

<sup>2</sup> No. of individual licence holders (inc. learner's permit). Source: Registration and Licensing, Department for Infrastructure and Transport, December 2023.

<sup>3</sup> Estimated resident population. Source: *Australian Demographic Statistics*, ABS, cat. no. 3101.0, June 2023.

# Preface

This report presents information compiled from police reported crashes in South Australia for 2023 and is the fifty third edition in an annual series that commenced with 1967 data.

## How are crashes reported and processed?

When a reportable road crash occurs, South Australia Police (SAPOL) collect the data which is entered into SAPOL's SHIELD system. The reports are then electronically forwarded to the Road Safety Policy and Reform section of the Department for Infrastructure and Transport (the Department) for further processing and geocoding. The information is checked for accuracy and consistency to ensure the reliability of any published statistics. Processed crash data is stored in the Department's 'Road Crash Database' (TARS).

Serious injury data reflects on-going improvements made by SAPOL to its data collection methods. Historically, the decision to report a road crash casualty as being 'admitted to hospital' was sometimes made by the police at the scene of the crash when a person was taken away by ambulance. From 2008, SAPOL officers started to verify whether injured persons were formally admitted to hospital rather than just being treated as a casualty at hospital and released. This improved classification of seriously injured casualties was utilised in an increasing proportion of collision reports until complete coverage occurred in 2012.

**The data presented in this report is for information purposes only and should be used with care before drawing conclusions not contained in this report. Details may differ from information previously released or published due to the database continually being updated with new information. Road crash information contained in this report is derived from TARS. Please note, data reported within this report is correct at the time of extraction. Due to continual quality assurances and process updates historical data may not match previous reports.**

## Scope

**Note:** The following changes were made to the Property Damage Only (PDO) definition in 2003, 2013, 2016 and 2017:

Date	Definition
1 January 2017	The Department processed all casualty crashes and only 'property damage' crashes involving any type of vehicle towed away from the crash or where involving: <ul style="list-style-type: none"> <li>a motorcycle (includes quad bikes), motor scooter, e-scooter, motorised bicycle and regular bicycle, regardless of whether another vehicle was involved</li> <li>any type of heavy vehicle with a GVML &gt; 4.5 tonnes or a bus with 13 seats or more</li> <li>a train or tram colliding with a vehicle or pedestrian within the road related area</li> <li>any type of vehicle colliding with a pedestrian.</li> </ul>
1 December 2016	The Department processed all 'property damage' crashes for the month of December 2016 in accordance with the Australian Transport Safety Bureau (ATSB) guidelines.  Prior to 1 December 2016, the crash statistics included in this publication were confined to those crashes which: <ul style="list-style-type: none"> <li>were reported to SA Police (SAPOL) (excludes SAPOL online crash reporting)</li> <li>occurred on a road, defined in the <i>Road Traffic Act 1961</i></li> <li>were defined by the ATSB publication "Guidelines For Determining Events as Road Crashes in Australia" (published March 2000)</li> <li>involved at least one moving vehicle</li> <li>involved at least one person being killed or injured, vehicle towed away, or total property damage of \$5,000 or greater</li> <li>included all crashes involving bicycles, motorcycles and scooters (irrespective of damage value or injury level).</li> </ul>
1 January 2013	The Department only processed 'property damage' crashes with an aggregated damage value of \$5,000 or greater, or where a vehicle was towed away.
1 July 2003	The Department only processed 'property damage' crashes where the value was \$3,000, or where a vehicle was towed away. Preceding this, the 'property damage' crash value was \$1,000 introduced on 1 January 1998.



## Related reports

All monthly and annual statistical reports are available from the Department's [THINK! Road Safety](#) website.

## Acknowledgements

Acknowledgement is extended to the South Australia Police for the supply of reported road crash reports.

## Notes

From 1 January 2013, new ABS boundaries were introduced into the coding corresponding to the Greater Adelaide City Statistical Area, replacing the previous metro/regional boundaries. As a consequence, Mt Barker and Adelaide Hills Council, part of Adelaide Plains Council, Barossa and Light Councils are now incorporated into Metropolitan Adelaide.

## Definitions and explanatory notes

BAC	Blood Alcohol Concentration (mg/100 ml)
Bicycle	Any two or three wheeled device operated by pedals and propelled by human power. Includes Motorised Bicycles.
Bicycle rider	A person occupying the controlling position of a bicycle.
Bicyclist/ cyclist	A bicycle rider or passenger, often referred to as a cyclist or pedal cyclist.
Driver	A controller of a motor vehicle other than a motorcycle or bicycle.
Drug	Methamphetamine, MDMA (Ecstasy) and/or THC (cannabis).
Casualty	Any person killed or injured as a result of a crash.
Casualty crash	A crash where someone has been killed or injured as a result of the crash.
Crash type code (DCA)	Definition for Coding Accidents - a coding system to describe the events involved in a crash. The 'crash-type' is based on the traffic movements leading up to the crash. Participant intent, as well as actual movement, is used in determining the DCA crash type.
Fatal crash	A crash for which there is at least one fatality.
Fatality/ life lost	A person who dies within 30 days of a crash as a result of injuries sustained in that crash.
Heavy vehicle	Heavy vehicle includes the following vehicle types: Rigid truck, Semi-trailer, Bus, B-Double and other defined special vehicles.
Intersection crash	A crash for which the first impact occurs at or within an approximate 20 metre radius of an intersection.
Metropolitan	Greater Adelaide City Statistical Area. Comprises of the following Local Government Areas: Adelaide, Burnside, Campbelltown, Charles Sturt, Holdfast Bay, Marion, Mitcham, Norwood Payneham & St Peters, Onkaparinga, Playford, Port Adelaide & Enfield, Prospect, Salisbury, Tea Tree Gully, Unley, Walkerville, West Torrens, Adelaide Hills, Mount Barker, Gawler and part of Barossa, Light and Adelaide Plains councils.
Mid-block crash	A crash that occurs between two intersections.
Minor injury	A person who sustains injuries requiring medical treatment, either by a doctor or in a hospital, as a result of a road crash, who was not admitted to hospital and who does not die as a result of those injuries within 30 days of the crash.
Minor injury crash	A crash in which at least one person sustains injury but no person is seriously injured or dies within 30 days of the crash.
Motor vehicle	Any road vehicle which is mechanically or electrically powered but not operated on rails.

Motorcycle	Any mechanically or electrically propelled two or three wheeled vehicles with or without side-car; includes solo motorcycle, motorcycle with sidecar, motor scooter, mini-bike, and quad bikes.
Motorcycle rider	A person occupying the controlling portion of a motorcycle.
Motorcyclist	Motorcycle rider or pillion passenger.
Other road user	Occupants/controllers of animal drawn vehicles, ridden animals, railway vehicles, tram, and other defined special vehicle.
Other vehicle type	Animal drawn vehicles, ridden animals, railway vehicles, and tram.
Passenger	Any person, other than the controller, who is in, on, or falling from a road vehicle at the time of the crash, provided a portion of the person is in/on the road vehicle. It does not include those that are boarding or alighting a road vehicle at the time of the crash.
Passenger vehicle	Includes all cars and car derivatives including 4WDs, vans, utilities, and station wagons. Excludes heavy vehicles, light trucks ( $\leq 4.5$ tonnes), motorcycles and bicycles.
Pedestrian	Any person who is standing, walking, playing, lying on the road or alighting or boarding a road vehicle at the time of the crash. It does not include those that have fallen from a vehicle. Also includes riders and passengers of motorised wheelchairs/wheelchairs, small wheeled vehicles and gopher users.
Pillion passenger	A passenger on but not controlling a motorcycle.
Property damage crash	A crash resulting in property damage in excess of the prescribed amount in which no person is injured or dies within 30 days of the crash.
Road crash	Any apparent unpremeditated event reported to the police and resulting in death, injury or property damage in excess of the prescribed amount, and attributed to the movement of the road vehicle on a road.
Road user	Any person who is a pedestrian, rider, or the occupant of a road vehicle.
Regional	Area outside of metropolitan Adelaide. Comprises of the following local government areas: Ceduna, Cleve, Elliston, Franklin Harbor, Kimba, Lower Eyre Peninsula, Port Lincoln, Streaky Bay, Tumby Bay, Whyalla, Cooper Pedy, Finders Ranges, Port Augusta, Roxby Downs, Alexandrina, Kangaroo Island, Victor Harbor, Yankalilla, Grant, Mount Gambier, Naracoorte Lucindale, Robe, Tatiara, Wattle Range, Berri and Barmera, Karoonda East Murray, Loxton Waikerie, Mid Murray, Murray Bridge, Renmark Paringa, Southern Mallee, The Coorong, Barunga West, Clare & Gilbert Valleys, Copper Coast, Goyder, Mount Remarkable, Northern Areas, Orroroo/Carrieton, Peterborough, Port Pirie, Wakefield, Yorke Peninsula and part of Barossa, Light and Adelaide Plains councils.
Serious casualty	A fatality/live lost or serious injury.
Serious injury	A person who sustains injuries and is admitted to hospital for a minimum period of an overnight stay as a result of a road crash and who does not die as a result of those injuries within 30 days of the crash.
Serious injury crash	A non-fatal crash in which at least one person is seriously injured.
Sex	As captured by SAPOL officer or recorded in the Department's registration and licensing system (TRUMPS). Gender data is not currently collected.
Vehicle occupant	Driver or passenger within a motor vehicle

## Speed definition

A motor vehicle is assessed as having been speeding if it satisfies the conditions described below:

- a) The vehicle's controller (driver or rider) was charged with a speeding offence; or the vehicle was described by police as travelling at excessive speed; or the stated speed of the vehicle was in excess of the speed limit; or the vehicle weight or the speed of the vehicle was faster than that allowed for the licence class of the driver or rider, or the vehicle weight, OR
- b) The vehicle was performing a manoeuvre characteristic of excessive speed, that is:
  - while on a curve the vehicle jack-knifed, skidded, slid or the controller lost control; or
  - the vehicle ran off the road while negotiating a bend or turning a corner and the controller was not distracted by something or disadvantaged by drowsiness or sudden illness; and was not swerving to avoid another vehicle, animal or object and the vehicle did not suffer equipment failure.

This is based on Transport for NSW criteria for determining whether or not a crash is to be considered as having involved speed as a contributing factor.

# Crash and casualty trends

- Historical data
- Fatality rates
- Interstate and international comparisons
- Causes of death
- Road user type
- Age and sex
- Region



**ROAD  
SAFETY**



Government of  
South Australia

**Table 1: Trends in South Australia, 1995 - 2023**

Year	Crashes						Casualties				Vehicles on Register <sup>1</sup> ('000)	Licence Holders <sup>2</sup> ('000)	Population <sup>3</sup> ('000)	Vehicle Kilometres Travelled <sup>4</sup> ('000 000)	Lives lost per			100, (M) Vehicle Kilometres Travelled
	Fatal Crashes	Serious Injury Crashes	Minor Injury Crashes	TOTAL Casualty Crashes	Property Damage Crashes	ALL Crashes	Lives lost	Serious Injuries	Minor Injuries	ALL Casualties					10,000 Vehicles	10,000 Licence Holders <sup>5</sup>	100,000 Population	
<b>1995</b>	<b>164</b>	<b>1185</b>	<b>5097</b>	<b>6446</b>	<b>32844</b>	<b>39290</b>	<b>182</b>	<b>1521</b>	<b>6638</b>	<b>8341</b>	<b>945</b>	<b>975</b>	<b>1469</b>	<b>13195</b>	<b>1.93</b>	<b>0.98</b>	<b>12.39</b>	<b>1.38</b>
1996	162	1324	5023	6509	32432	38941	181	1720	6775	8676	959	979	1474	-	1.89	1.09	12.28	-
1997	124	1168	5138	6430	32442	38872	149	1509	6716	8374	969	995	1479	-	1.54	0.80	10.07	-
1998	152	1225	5551	6928	32664	39592	168	1566	7345	9079	995	995	1487	13974	1.69	0.85	11.30	1.20
1999	132	1238	6047	7417	34287	41704	153	1607	8071	9831	1010	1012	1493	13081	1.52	0.85	10.25	1.17
<b>2000</b>	<b>151</b>	<b>1229</b>	<b>6433</b>	<b>7813</b>	<b>33172</b>	<b>40985</b>	<b>166</b>	<b>1627</b>	<b>8501</b>	<b>10294</b>	<b>1011</b>	<b>1025</b>	<b>1498</b>	<b>13153</b>	<b>1.64</b>	<b>1.04</b>	<b>11.08</b>	<b>1.26</b>
2001	137	1245	6351	7733	33041	40774	154	1603	8497	10254	1023	1045	1502	15085	1.51	0.85	10.25	1.02
2002	138	1199	6249	7586	32525	40111	154	1538	8382	10074	1045	1047	1522	14855	1.47	0.88	10.12	1.04
2003	135	1169	5786	7090	23220	30310	156	1470	7597	9223	1034	1052	1527	14963	1.51	0.85	10.21	1.04
2004	128	1071	5521	6720	15548	22268	139	1331	7297	8767	1049	1072	1534	15241	1.32	0.93	9.06	0.91
<b>2005</b>	<b>126</b>	<b>994</b>	<b>5106</b>	<b>6226</b>	<b>14945</b>	<b>21171</b>	<b>147</b>	<b>1296</b>	<b>6629</b>	<b>8072</b>	<b>1065</b>	<b>1094</b>	<b>1542</b>	<b>14533</b>	<b>1.38</b>	<b>0.84</b>	<b>9.53</b>	<b>1.01</b>
2006	104	1092	5009	6205	14513	20718	117	1358	6489	7964	1085	1042	1555	15535	1.08	0.77	7.53	0.75
2007	108	1090	5295	6493	15230	21723	125	1368	6961	8454	1107	1073	1585	14212	1.13	0.62	7.89	0.88
2008	87	996	5615	6698	15223	21921	99	1217	7174	8490	1171	1094	1602	-	0.85	0.56	6.18	-
2009	104	908	5213	6225	15506	21731	119	1108	6618	7845	1201	1135	1623	-	0.99	0.65	7.33	-
<b>2010</b>	<b>105</b>	<b>886</b>	<b>5424</b>	<b>6415</b>	<b>15877</b>	<b>22292</b>	<b>118</b>	<b>1050</b>	<b>6907</b>	<b>8075</b>	<b>1226</b>	<b>1136</b>	<b>1645</b>	<b>14615</b>	<b>0.96</b>	<b>0.64</b>	<b>7.17</b>	<b>0.81</b>
2011	95	781	5471	6347	16970	23317	103	932	6896	7931	1265	1141	1657	-	0.81	0.53	6.22	-
2012	86	637	5377	6100	16729	22829	94	761	6624	7479	1285	1155	1655	16313	0.73	0.56	5.68	0.58
2013	89	666	5037	5792	10883	16675	97	790	6290	7177	1305	1186	1671	-	0.74	0.51	5.80	-
2014	96	594	5005	5695	10467	16162	108	711	6163	6982	1322	1196	1686	16715	0.82	0.53	6.41	0.65
<b>2015</b>	<b>96</b>	<b>657</b>	<b>4616</b>	<b>5369</b>	<b>10063</b>	<b>15432</b>	<b>102</b>	<b>759</b>	<b>5800</b>	<b>6661</b>	<b>1349</b>	<b>1204</b>	<b>1699</b>	<b>-</b>	<b>0.76</b>	<b>0.52</b>	<b>6.00</b>	<b>-</b>
2016	77	574	4562	5213	11562	16775	86	692	5787	6565	1419	1225	1708	16915	0.61	0.40	5.04	0.51
2017	93	533	4374	5000	8237	13237	100	622	5515	6237	1442	1238	1723	-	0.69	0.57	5.80	-
2018	75	485	4393	4953	8646	13599	80	576	5468	6124	1443	1245	1736	17817	0.55	0.41	4.61	0.45
<b>2019</b>	<b>110</b>	<b>729</b>	<b>3937</b>	<b>4776</b>	<b>8188</b>	<b>12964</b>	<b>114</b>	<b>833</b>	<b>5084</b>	<b>6031</b>	<b>1460</b>	<b>1257</b>	<b>1751</b>	<b>-</b>	<b>0.78</b>	<b>0.61</b>	<b>6.51</b>	<b>-</b>
<b>2020</b>	<b>85</b>	<b>624</b>	<b>3259</b>	<b>3968</b>	<b>7566</b>	<b>11534</b>	<b>93</b>	<b>715</b>	<b>4069</b>	<b>4877</b>	<b>1485</b>	<b>1283</b>	<b>1770</b>	<b>16392</b>	<b>0.63</b>	<b>0.51</b>	<b>5.25</b>	<b>0.57</b>
<b>2021</b>	<b>94</b>	<b>716</b>	<b>3546</b>	<b>4356</b>	<b>8793</b>	<b>13149</b>	<b>99</b>	<b>827</b>	<b>4442</b>	<b>5368</b>	<b>1526</b>	<b>1309</b>	<b>1773</b>	<b>16392</b>	<b>0.65</b>	<b>0.48</b>	<b>5.58</b>	<b>0.60</b>
<b>2022</b>	<b>68</b>	<b>575</b>	<b>2906</b>	<b>3549</b>	<b>8806</b>	<b>12355</b>	<b>71</b>	<b>652</b>	<b>3600</b>	<b>4323</b>	<b>1561</b>	<b>1329</b>	<b>1821</b>	<b>16164</b>	<b>0.45</b>	<b>0.38</b>	<b>3.90</b>	<b>0.44</b>
<b>2023</b>	<b>109</b>	<b>712</b>	<b>2910</b>	<b>3731</b>	<b>9335</b>	<b>13066</b>	<b>117</b>	<b>824</b>	<b>3644</b>	<b>4585</b>	<b>1599</b>	<b>1351</b>	<b>1853</b>	<b>16164</b>	<b>0.73</b>	<b>0.56</b>	<b>6.31</b>	<b>0.72</b>

**Note:**

Changes were made to the Property Damage Only (PDO) definition in 1998, 2003, 2013, 2016 and 2017. Refer to **Scope**, page 5 for full details.

<sup>1</sup> At June 2023. Excludes tractors, trailers, caravans, plant and equipment. Source: TRUMPS database, Department for Infrastructure and Transport.

<sup>2</sup> At December 2023. Source: TRUMPS database, Department for Infrastructure and Transport.

<sup>3</sup> Population as of June 2023. Source: Australian Bureau of Statistics, *Australian Demographic Statistics*, cat.no. 3101.0.

<sup>4</sup> Source: Australian Bureau of Statistics, Survey of Motor Vehicle Use, cat. no. 9208.0 (prior to 2022); BITRE, Road Trauma Australia 2022 Statical Summary (2022 and 2023).

<sup>5</sup> Licence holder fatality rate is based on driver and rider lives lost only.

Figure 1: Data Trends in South Australia, 1995 – 2023

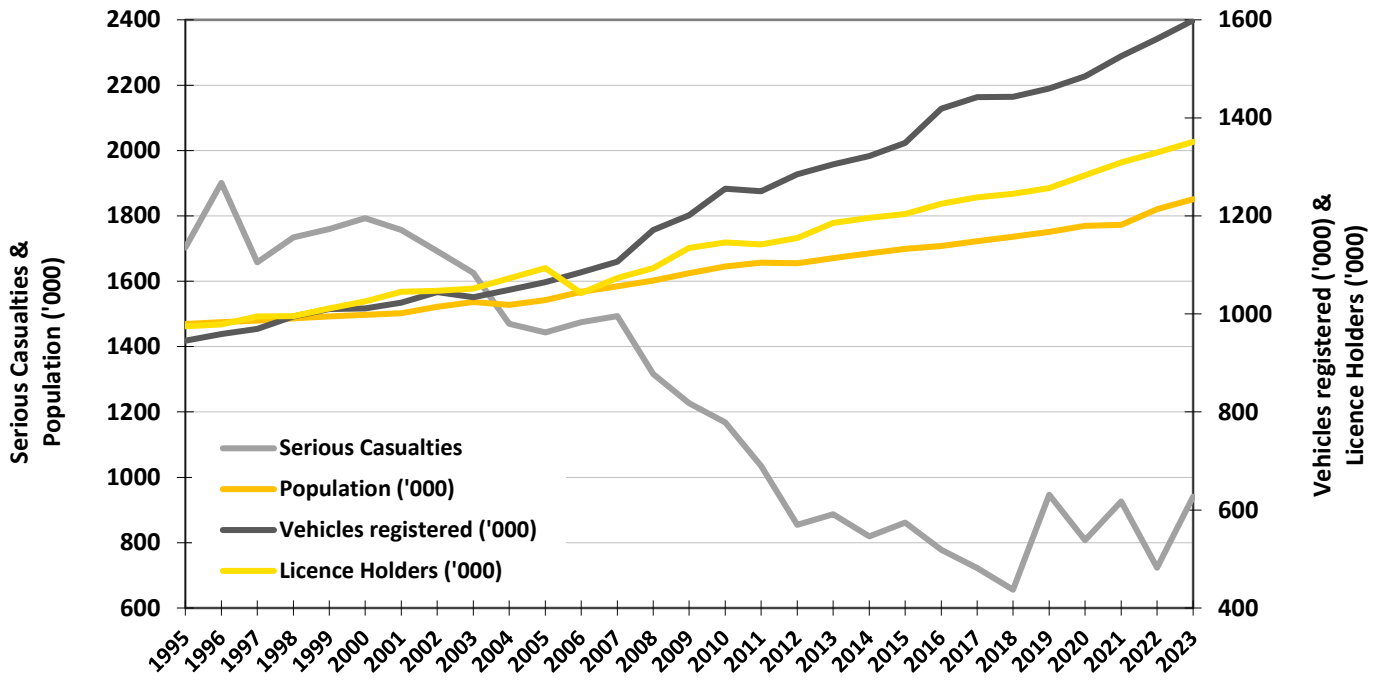
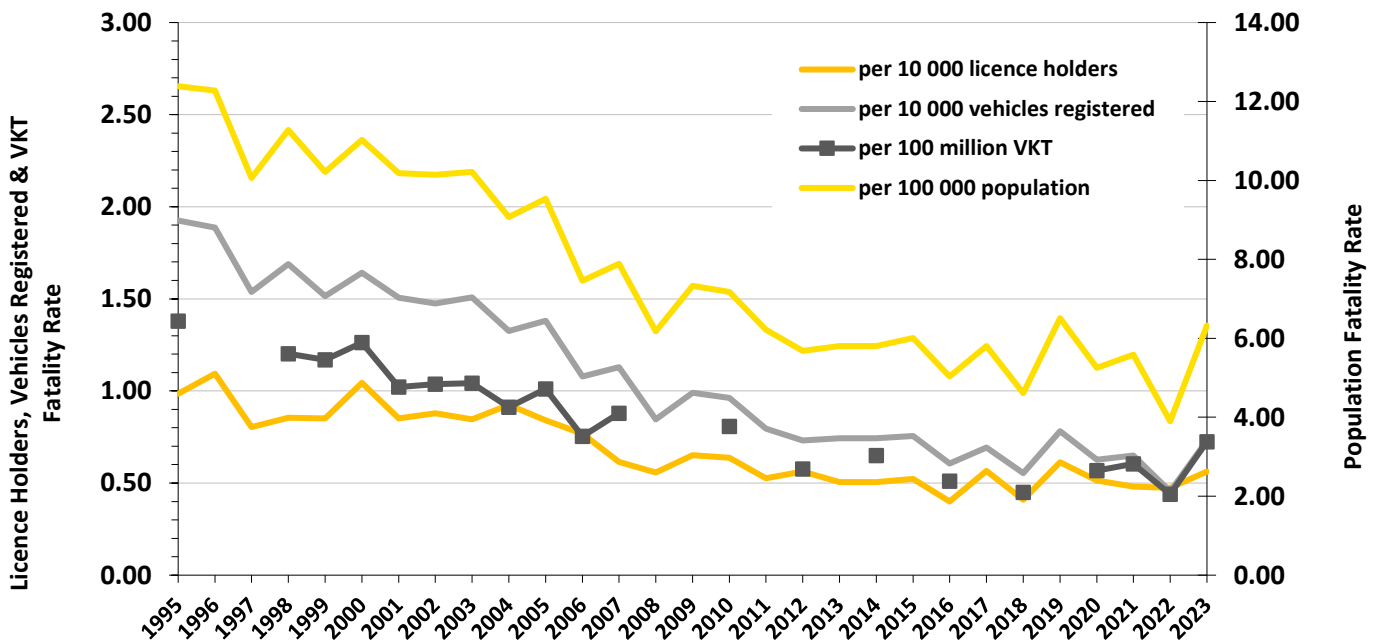


Figure 2: Fatality Rates in South Australia, 1995 - 2023



**Note:** Changes were made to the Property Damage Only (PDO) definition in 1998, 2003, 2013, 2016 and 2017. Refer to **Scope**, page 5 for full details.

**Table 2: Comparison with other Australian Jurisdictions<sup>1</sup>, 2023**

	Lives lost <sup>1</sup>	Vehicles on register <sup>2</sup> ('000)	Population <sup>3</sup> ('000)	Lives lost per 10 000 vehicles	Lives lost per 100 000 population
<b>SOUTH AUSTRALIA</b>	<b>117</b>	<b>1,599</b>	<b>1,853</b>	<b>0.73</b>	<b>6.31</b>
New South Wales	340	6,047	8,345	0.56	4.17
Victoria	296	5,273	6,818	0.56	4.47
Queensland	277	4,463	5,461	0.62	5.20
Western Australia	158	2,368	2,883	0.67	5.67
Tasmania	35	520	573	0.67	6.12
Australian Capital Territory	4	324	466	0.12	0.88
Northern Territory	31	165	253	1.88	12.35
<b>AUSTRALIA</b>	<b>1,258</b>	<b>20,680</b>	<b>26,659</b>	<b>0.61</b>	<b>4.84</b>

**Table 3a: Road Crash Lives Lost by Age Group compared with Deaths Registered in South Australia, 2022**

Age Groups	Deaths Registered in South Australia <sup>4</sup>	Road Lives lost <sup>5</sup>	
		Number	% of All Deaths
0-14	87	1	1%
15-19	26	9	35%
20-24	52	7	13%
25-29	58	8	14%
30-34	81	4	5%
35-39	103	4	4%
40-49	334	12	4%
50-59	799	7	1%
60-69	1,752	8	0%
70+	12,162	11	0%
Unknown	0	0	0%
<b>TOTAL</b>	<b>15,454</b>	<b>71</b>	<b>0%</b>

**Table 3b: Age of Passenger Vehicles Involved in Serious Casualty Crashes, last five years (2019 - 2023)**

Passenger Vehicle Age Group	2019	2020	2021	2022	2023
0-4	154	141	134	99	150
5-9	187	169	159	147	174
10-14	182	174	200	149	165
15-19	199	145	195	152	178
20+	124	110	136	111	165
Unknown	12	3	0	8	7
<b>TOTAL</b>	<b>858</b>	<b>742</b>	<b>824</b>	<b>666</b>	<b>839</b>

**Note:**

Changes were made to the Property Damage Only (PDO) definition in 1998, 2003, 2013, 2016 and 2017. Refer to **Scope**, page 5 for full details.

<sup>1</sup> Australian data based on information published by the Bureau of Infrastructure, Transport and Regional Economics (BITRE) for December 2023.

<sup>2</sup> Australian figures (except SA) are as at June 2022. Source: Australian Bureau of Statistics, *Motor Vehicle Census Australia*, cat. no. 9309.0.

These figures may not agree with registration statistics for individual States and Territories. Data for SA sourced from TRUMPS, as of June 2022.

<sup>3</sup> Population as of June 2023. Source: Australian Bureau of Statistics, *Australian Demographic Statistics*, cat.no. 3101.0.

<sup>4</sup> Source: Australian Bureau of Statistics, *Deaths, Australia 2022*, cat.no. 3302.0.

<sup>5</sup> Source: The Department's TARS road crash database.

**Table 4: Casualties by Road User Type and Severity, 1995 - 2023**

Year	Vehicle Occupant						Motorcyclist						Pedestrian			Bicyclist			Other Road User			ALL ROAD USERS		
	Driver			Passenger			Rider			Pillion Passenger			F	SI	MI	F	SI	MI	F	SI	MI	F	SI	MI
	F	SI	MI	F	SI	MI	F	SI	MI	F	SI	MI												
<b>1995</b>	<b>84</b>	<b>648</b>	<b>3571</b>	<b>36</b>	<b>432</b>	<b>1823</b>	<b>12</b>	<b>153</b>	<b>359</b>	<b>0</b>	<b>22</b>	<b>50</b>	<b>40</b>	<b>186</b>	<b>411</b>	<b>8</b>	<b>80</b>	<b>421</b>	<b>0</b>	<b>40</b>	<b>3</b>	<b>180</b>	<b>1561</b>	<b>6638</b>
1996	92	779	3615	40	522	1922	15	189	365	3	14	33	24	153	428	7	59	403	0	24	9	181	1740	6775
1997	67	712	3724	44	408	1749	13	144	353	1	15	31	20	147	427	4	79	427	0	20	5	149	1525	6716
1998	72	779	4213	44	383	1972	13	157	314	0	20	26	35	142	402	4	79	408	0	35	10	168	1595	7345
1999	71	749	4749	38	456	2173	15	123	277	0	14	20	26	178	419	3	84	425	1	24	8	154	1628	8071
<b>2000</b>	<b>91</b>	<b>739</b>	<b>5132</b>	<b>37</b>	<b>490</b>	<b>2191</b>	<b>16</b>	<b>158</b>	<b>323</b>	<b>0</b>	<b>12</b>	<b>25</b>	<b>21</b>	<b>151</b>	<b>409</b>	<b>1</b>	<b>75</b>	<b>412</b>	<b>0</b>	<b>21</b>	<b>9</b>	<b>166</b>	<b>1646</b>	<b>8501</b>
2001	76	809	5023	32	419	2298	13	156	300	1	13	21	26	143	426	6	58	417	1	26	12	155	1624	8497
2002	72	753	5012	39	434	2196	20	153	321	1	7	22	19	129	425	3	59	402	1	19	4	155	1554	8382
2003	77	783	4663	44	343	1896	12	144	280	1	19	27	17	115	359	5	63	367	5	17	5	161	1484	7597
2004	80	687	4320	23	316	1915	20	157	288	1	9	20	12	104	369	3	57	382	0	1	3	139	1331	7297
<b>2005</b>	<b>74</b>	<b>646</b>	<b>3943</b>	<b>39</b>	<b>342</b>	<b>1598</b>	<b>18</b>	<b>125</b>	<b>276</b>	<b>2</b>	<b>11</b>	<b>19</b>	<b>11</b>	<b>111</b>	<b>374</b>	<b>3</b>	<b>61</b>	<b>418</b>	<b>0</b>	<b>0</b>	<b>1</b>	<b>147</b>	<b>1296</b>	<b>6629</b>
2006	58	670	3772	20	302	1586	22	178	322	1	17	22	12	111	365	4	80	419	0	0	3	117	1358	6489
2007	58	685	4011	37	347	1762	8	162	409	0	10	17	17	108	330	5	56	429	0	0	3	125	1368	6961
2008	45	582	4211	24	264	1720	16	176	435	1	8	23	12	120	334	1	67	447	0	0	4	99	1217	7174
2009	60	549	4010	32	243	1479	14	159	389	1	9	15	10	89	279	2	59	442	0	0	4	119	1108	6618
<b>2010</b>	<b>57</b>	<b>500</b>	<b>4205</b>	<b>24</b>	<b>211</b>	<b>1574</b>	<b>16</b>	<b>146</b>	<b>388</b>	<b>0</b>	<b>7</b>	<b>20</b>	<b>16</b>	<b>103</b>	<b>245</b>	<b>5</b>	<b>82</b>	<b>470</b>	<b>0</b>	<b>1</b>	<b>5</b>	<b>118</b>	<b>1050</b>	<b>6907</b>
2011	40	445	4236	22	193	1505	20	143	361	1	9	19	17	77	269	3	61	499	0	4	7	103	932	6896
2012	52	350	4027	14	137	1431	13	113	339	2	6	14	10	77	296	3	78	516	0	0	1	94	761	6624
2013	48	384	3860	17	122	1326	12	129	369	0	5	18	15	87	231	5	63	486	0	0	0	97	790	6290
2014	52	320	3779	24	135	1225	11	127	417	0	3	20	17	62	227	4	64	495	0	0	0	108	711	6163
<b>2015</b>	<b>52</b>	<b>358</b>	<b>3444</b>	<b>17</b>	<b>132</b>	<b>1247</b>	<b>11</b>	<b>139</b>	<b>386</b>	<b>0</b>	<b>6</b>	<b>13</b>	<b>18</b>	<b>50</b>	<b>205</b>	<b>4</b>	<b>74</b>	<b>505</b>	<b>0</b>	<b>0</b>	<b>0</b>	<b>102</b>	<b>759</b>	<b>5800</b>
2016	41	325	3495	23	140	1200	8	105	390	0	4	9	9	66	245	5	52	448	0	0	0	86	692	5787
2017	46	313	3351	11	121	1082	24	105	377	0	3	9	17	41	246	2	39	450	0	0	0	100	622	5515
2018	41	277	3317	16	87	1079	10	97	391	0	6	11	6	58	233	7	51	435	0	0	2	80	576	5468
<b>2019</b>	<b>60</b>	<b>349</b>	<b>3122</b>	<b>9</b>	<b>108</b>	<b>1048</b>	<b>17</b>	<b>196</b>	<b>294</b>	<b>0</b>	<b>5</b>	<b>10</b>	<b>21</b>	<b>80</b>	<b>220</b>	<b>7</b>	<b>94</b>	<b>383</b>	<b>0</b>	<b>1</b>	<b>7</b>	<b>114</b>	<b>833</b>	<b>5084</b>
<b>2020</b>	<b>47</b>	<b>293</b>	<b>2526</b>	<b>15</b>	<b>96</b>	<b>784</b>	<b>19</b>	<b>189</b>	<b>256</b>	<b>2</b>	<b>5</b>	<b>12</b>	<b>8</b>	<b>57</b>	<b>153</b>	<b>2</b>	<b>73</b>	<b>336</b>	<b>0</b>	<b>2</b>	<b>2</b>	<b>93</b>	<b>715</b>	<b>4069</b>
<b>2021</b>	<b>46</b>	<b>332</b>	<b>2791</b>	<b>16</b>	<b>119</b>	<b>854</b>	<b>17</b>	<b>189</b>	<b>296</b>	<b>1</b>	<b>4</b>	<b>5</b>	<b>14</b>	<b>84</b>	<b>180</b>	<b>5</b>	<b>93</b>	<b>308</b>	<b>0</b>	<b>6</b>	<b>8</b>	<b>99</b>	<b>827</b>	<b>4442</b>
<b>2022</b>	<b>38</b>	<b>268</b>	<b>2243</b>	<b>9</b>	<b>106</b>	<b>668</b>	<b>13</b>	<b>139</b>	<b>268</b>	<b>0</b>	<b>8</b>	<b>11</b>	<b>8</b>	<b>76</b>	<b>155</b>	<b>3</b>	<b>53</b>	<b>245</b>	<b>0</b>	<b>2</b>	<b>10</b>	<b>71</b>	<b>652</b>	<b>3600</b>
<b>2023</b>	<b>53</b>	<b>348</b>	<b>2168</b>	<b>12</b>	<b>116</b>	<b>727</b>	<b>23</b>	<b>187</b>	<b>256</b>	<b>0</b>	<b>12</b>	<b>8</b>	<b>19</b>	<b>64</b>	<b>157</b>	<b>8</b>	<b>89</b>	<b>312</b>	<b>2</b>	<b>8</b>	<b>16</b>	<b>117</b>	<b>824</b>	<b>3644</b>

F - Fatality/Life lost, SI - Serious Injury, MI - Minor Injury

**Note:** Changes were made to the Property Damage Only (PDO) definition in 1998, 2003, 2013, 2016 and 2017. Refer to **Scope**, page 5 for full details.

**Table 5: Casualties by Age Group and Severity, 1995 - 2023**

Year	0-15			16-19			20-24			25-29			30-39			40-49			50-59			60-69			70+			Unknown			ALL CASUALTIES		
	F	SI	MI	F	SI	MI	F	SI	MI	F	SI	MI	F	SI	MI	F	SI	MI	F	SI	MI	F	SI	MI	F	SI	MI	F	SI	MI	F	SI	MI
1995	14	132	597	22	225	884	24	255	1094	16	168	716	39	226	1056	18	154	807	10	94	450	19	69	308	20	99	330	0	99	396	182	1521	6638
1996	12	162	642	18	230	931	27	279	1002	21	203	708	26	267	1155	23	160	824	12	98	475	15	101	286	26	118	362	1	102	390	181	1720	6775
1997	8	149	603	19	194	840	21	233	973	13	149	718	28	255	1127	11	150	866	11	91	524	12	79	307	24	110	350	2	99	408	149	1509	6716
1998	10	134	623	18	251	979	17	212	1099	12	172	820	25	225	1207	21	181	889	12	103	555	14	66	315	37	120	346	2	102	512	168	1566	7345
1999	14	147	662	21	218	987	23	222	1056	11	136	904	22	225	1337	18	172	996	11	110	620	13	81	347	20	118	343	0	178	819	153	1607	8071
2000	11	121	547	26	212	1115	16	229	1180	23	158	893	21	225	1427	21	196	1042	10	113	698	14	81	396	24	111	376	0	181	827	166	1627	8501
2001	10	101	519	16	223	1092	14	210	1168	16	159	887	32	260	1405	14	192	1120	11	128	724	13	72	346	28	80	388	0	178	848	154	1603	8497
2002	16	107	461	16	198	1142	18	213	1159	17	164	875	28	241	1385	24	177	1088	10	104	680	5	54	349	20	108	416	0	172	827	154	1538	8382
2003	11	81	434	21	189	993	20	225	1060	11	147	750	26	244	1282	19	182	1081	18	119	701	10	62	329	20	100	331	0	121	636	156	1470	7597
2004	7	64	423	7	199	905	27	212	1045	17	135	652	26	207	1204	18	169	961	17	98	626	11	56	351	9	84	369	0	107	761	139	1331	7297
2005	8	86	349	18	173	874	28	195	920	19	115	616	16	205	1099	19	157	956	11	121	626	11	77	341	17	94	315	0	73	533	147	1296	6629
2006	3	74	441	12	181	707	17	186	932	11	129	610	17	225	1028	23	181	901	14	122	681	10	70	355	10	88	344	0	102	490	117	1358	6489
2007	6	60	402	18	173	804	16	210	970	14	137	703	14	214	1102	13	167	982	10	139	691	5	73	352	29	100	388	0	95	567	125	1368	6961
2008	5	51	439	16	157	812	12	177	921	10	114	700	19	211	1156	9	164	1064	13	110	797	4	75	434	11	91	365	0	67	486	99	1217	7174
2009	4	60	393	20	138	765	22	138	827	10	124	682	17	179	1120	20	132	1040	12	112	728	2	81	417	12	94	320	0	50	326	119	1108	6618
2010	5	49	397	19	110	737	12	131	846	5	121	740	16	145	1156	22	155	1013	17	112	879	8	72	406	14	120	381	0	35	352	118	1050	6907
2011	4	43	388	6	94	694	5	127	937	9	95	688	22	146	1177	22	141	1055	12	106	833	4	77	460	19	73	390	0	30	274	103	932	6896
2012	3	32	393	7	76	616	10	104	837	7	75	695	9	106	1139	16	112	997	11	91	785	9	70	464	22	73	423	0	22	275	94	761	6624
2013	6	37	349	2	50	569	13	93	757	5	81	692	6	112	1049	20	120	959	12	117	769	9	70	457	24	82	451	0	28	238	97	790	6290
2014	7	26	337	6	80	517	11	90	764	9	71	652	13	99	998	21	122	966	6	93	773	13	54	510	22	57	423	0	19	223	108	711	6163
2015	5	28	381	7	71	525	9	84	687	7	60	594	13	128	925	13	106	826	11	105	789	14	78	442	23	80	431	0	19	200	102	759	5800
2016	5	33	382	3	81	508	12	86	733	9	76	592	11	82	923	15	94	824	3	97	711	5	51	481	23	87	438	0	5	195	86	692	5787
2017	3	26	411	8	43	487	12	56	581	8	54	560	10	81	833	11	83	806	11	88	701	12	60	450	25	110	438	0	21	248	100	622	5515
2018	4	26	382	10	48	447	7	63	606	6	50	549	7	72	904	13	79	785	7	83	743	11	55	470	15	83	425	0	17	157	80	576	5468
2019	3	32	362	9	64	405	12	94	589	6	79	484	20	128	855	15	93	731	13	122	675	7	103	456	29	109	446	0	9	81	114	833	5084
2020	2	30	263	11	52	365	13	77	447	8	70	436	17	112	669	9	96	591	9	104	509	6	81	379	18	90	371	0	3	39	93	715	4069
2021	3	34	316	9	84	392	10	101	541	4	90	460	13	103	749	6	108	577	17	112	568	19	97	412	18	95	393	0	3	34	99	827	4442
2022	1	34	226	9	56	293	7	64	395	8	75	342	8	93	609	12	81	498	7	100	447	8	59	363	11	83	387	0	7	40	71	652	3600
2023	0	28	278	5	68	309	8	79	396	15	78	344	15	126	582	18	111	491	18	126	464	15	99	356	23	103	402	0	6	22	117	824	3644

F - Fatality/Life lost, SI - Serious Injury, MI - Minor Injury

**Note:**  
Changes were made to the Property Damage Only (PDO) definition in 1998, 2003, 2013, 2016 and 2017. Refer to **Scope**, page 5 for full details.



Table 6: Casualties by Sex and Severity, 1995 - 2023

Year	Male			Female			Unknown			ALL PERSONS		
	F	SI	MI	F	SI	MI	F	SI	MI	F	SI	MI
<b>1995</b>	<b>130</b>	<b>967</b>	<b>3233</b>	<b>52</b>	<b>553</b>	<b>3355</b>	<b>0</b>	<b>1</b>	<b>50</b>	<b>182</b>	<b>1521</b>	<b>6638</b>
1996	132	1046	3170	48	669	3571	1	5	34	181	1720	6775
1997	98	947	3173	51	554	3488	0	8	55	149	1509	6716
1998	111	941	3277	55	605	3897	2	20	171	168	1566	7345
1999	96	965	3715	56	613	4192	1	29	164	153	1607	8071
<b>2000</b>	<b>121</b>	<b>981</b>	<b>3914</b>	<b>45</b>	<b>626</b>	<b>4479</b>	<b>0</b>	<b>20</b>	<b>108</b>	<b>166</b>	<b>1627</b>	<b>8501</b>
2001	113	974	3929	41	621	4504	0	8	64	154	1603	8497
2002	117	961	3951	37	574	4426	0	3	5	154	1538	8382
2003	109	914	3596	47	552	3995	0	4	6	156	1470	7597
2004	111	823	3467	28	507	3808	0	1	22	139	1331	7297
<b>2005</b>	<b>108</b>	<b>831</b>	<b>3284</b>	<b>39</b>	<b>464</b>	<b>3320</b>	<b>0</b>	<b>1</b>	<b>25</b>	<b>147</b>	<b>1296</b>	<b>6629</b>
2006	89	873	3082	28	485	3401	0	0	6	117	1358	6489
2007	94	871	3315	31	497	3621	0	0	25	125	1368	6961
2008	74	758	3369	25	459	3794	0	0	11	99	1217	7174
2009	92	702	3182	27	404	3419	0	2	17	119	1108	6618
<b>2010</b>	<b>75</b>	<b>663</b>	<b>3259</b>	<b>43</b>	<b>386</b>	<b>3635</b>	<b>0</b>	<b>1</b>	<b>13</b>	<b>118</b>	<b>1050</b>	<b>6907</b>
2011	76	584	3278	27	348	3610	0	0	8	103	932	6896
2012	72	499	3150	22	262	3464	0	0	10	94	761	6624
2013	68	502	2940	29	288	3338	0	0	12	97	790	6290
2014	76	472	2922	32	239	3239	0	0	2	108	711	6163
<b>2015</b>	<b>66</b>	<b>502</b>	<b>2773</b>	<b>36</b>	<b>256</b>	<b>3021</b>	<b>0</b>	<b>1</b>	<b>6</b>	<b>102</b>	<b>759</b>	<b>5800</b>
2016	56	430	2800	30	262	2975	0	0	12	86	692	5787
2017	80	391	2689	20	231	2816	0	0	10	100	622	5515
2018	80	391	2689	20	231	2816	0	0	10	100	622	5515
<b>2019</b>	<b>86</b>	<b>570</b>	<b>2427</b>	<b>28</b>	<b>263</b>	<b>2640</b>	<b>0</b>	<b>0</b>	<b>17</b>	<b>114</b>	<b>833</b>	<b>5084</b>
<b>2020</b>	<b>67</b>	<b>490</b>	<b>2073</b>	<b>26</b>	<b>225</b>	<b>1983</b>	<b>0</b>	<b>0</b>	<b>13</b>	<b>93</b>	<b>715</b>	<b>4069</b>
<b>2021</b>	<b>76</b>	<b>556</b>	<b>2101</b>	<b>23</b>	<b>271</b>	<b>2327</b>	<b>0</b>	<b>0</b>	<b>14</b>	<b>99</b>	<b>827</b>	<b>4442</b>
<b>2022</b>	<b>53</b>	<b>454</b>	<b>1786</b>	<b>18</b>	<b>198</b>	<b>1802</b>	<b>0</b>	<b>0</b>	<b>12</b>	<b>71</b>	<b>652</b>	<b>3600</b>
<b>2023</b>	<b>85</b>	<b>558</b>	<b>1766</b>	<b>32</b>	<b>266</b>	<b>1872</b>	<b>0</b>	<b>0</b>	<b>6</b>	<b>117</b>	<b>824</b>	<b>3644</b>

F - Fatality/Life lost, SI - Serious Injury, MI - Minor Injury

**Note:** Changes were made to the Property Damage Only (PDO) definition in 1998, 2003, 2013, 2016 and 2017. Refer to **Scope**, page 5 for full details.

**Table 7: Crashes and Casualties by Region<sup>1</sup> and Severity, 1995 - 2023**

Year	Metropolitan Adelaide <sup>1</sup>					Regional South Australia <sup>1</sup>												
	Crashes				ALL CRASHES	Lives lost	Casualties			Crashes					Casualties			
	Fatal Crashes	Serious Injury Crashes	Minor Injury Crashes	Property Damage Crashes			Serious Injuries	Minor Injuries	ALL CASUALTIES	Fatal Crashes	Serious Injury Crashes	Minor Injury Crashes	Property Damage Crashes	ALL CRASHES	Lives lost	Serious Injuries	Minor Injuries	ALL CASUALTIES
1995	77	677	4120	27726	32600	77	817	5152	6046	87	509	978	5122	6696	105	704	1486	2295
1996	68	700	4031	27232	32031	73	861	5206	6140	94	625	991	5194	6904	108	860	1568	2536
1997	52	665	4199	27194	32110	55	800	5294	6149	72	504	928	5231	6735	94	711	1410	2215
1998	65	698	4579	27285	32627	70	855	5868	6793	87	527	970	5360	6944	98	710	1474	2282
1999	56	674	5091	28790	34611	61	830	6618	7509	76	564	956	5499	7095	92	777	1454	2323
2000	63	681	5423	28055	34222	68	842	6983	7893	88	548	1009	5117	6762	98	785	1516	2399
2001	64	647	5369	27988	34068	67	768	6950	7785	73	598	983	5051	6705	87	835	1548	2470
2002	49	621	5218	27582	33470	54	754	6743	7551	89	578	1031	4942	6640	100	784	1639	2523
2003	57	585	4839	19316	24797	62	731	6188	6981	78	584	947	3902	5511	94	739	1409	2242
2004	61	577	4583	12713	17934	64	692	5903	6659	67	494	938	2835	4334	75	639	1394	2108
2005	47	513	4212	12225	16997	51	620	5300	5971	79	481	894	2720	4174	96	676	1329	2101
2006	50	619	4146	11919	16734	54	730	5159	5943	54	473	863	2594	3984	63	628	1330	2021
2007	45	614	4380	12504	17543	49	722	5565	6336	63	476	915	2726	4180	76	646	1396	2118
2008	40	557	4643	12516	17756	44	649	5766	6459	47	439	972	2707	4165	55	568	1408	2031
2009	36	494	4287	12640	17457	41	565	5314	5920	68	414	926	2866	4274	78	543	1304	1925
2010	44	478	4505	12971	17998	45	531	5632	6208	61	408	919	2906	4294	73	519	1275	1867
2011	41	419	4572	14088	19120	42	472	5603	6117	54	362	899	2883	4198	61	460	1293	1814
2012	29	347	4464	13915	18755	31	384	5378	5793	57	290	913	2814	4074	63	377	1246	1686
2013	41	394	4379	9242	14056	43	459	5375	5877	48	272	658	1641	2619	54	331	915	1300
2014	37	346	4328	8920	13631	38	376	5203	5617	59	248	677	1549	2533	70	335	960	1365
2015	43	391	3916	8613	12963	43	428	4800	5271	53	266	700	1450	2469	59	331	1000	1390
2016	32	339	3881	9886	14138	34	382	4762	5178	45	235	681	1676	2637	52	310	1025	1387
2017	54	322	3703	6977	11056	56	359	4583	4998	39	211	671	1260	2181	44	263	932	1239
2018	24	284	3758	7466	11532	24	323	4572	4919	51	201	635	1180	2067	56	253	896	1205
2019	49	504	3393	7121	11067	49	553	4294	4896	61	225	544	1067	1897	65	280	790	1135
2020	36	428	2773	6531	9768	38	471	3391	3900	49	196	486	1035	1766	55	244	678	977
2021	40	523	3021	7586	11170	40	587	3731	4358	54	193	525	1207	1979	59	240	711	1010
2022	31	338	2444	7568	10381	32	373	2974	3379	37	237	462	1238	1974	39	279	626	944
2023	61	455	2470	8028	11014	61	501	2989	3551	48	257	440	1307	2052	56	323	655	1034

**Note:**  
Changes were made to the Property Damage Only (PDO) definition in 1998, 2003, 2013, 2016 and 2017. Refer to **Scope**, page 5 for full details.

<sup>1</sup> From 2013 onwards, regional boundaries have been adjusted to the ABS Greater Adelaide Statistical Division - For more information please look at **Preface** and **Definitions & Explanatory Notes**.

# Road crashes in 2023

- Time distribution
- Crash types
- Definition for Coding Accidents
- Crash location
- Top intersections
- Motor vehicle types
- Involvement and responsibility
- Speed



**ROAD  
SAFETY**



Government of  
South Australia

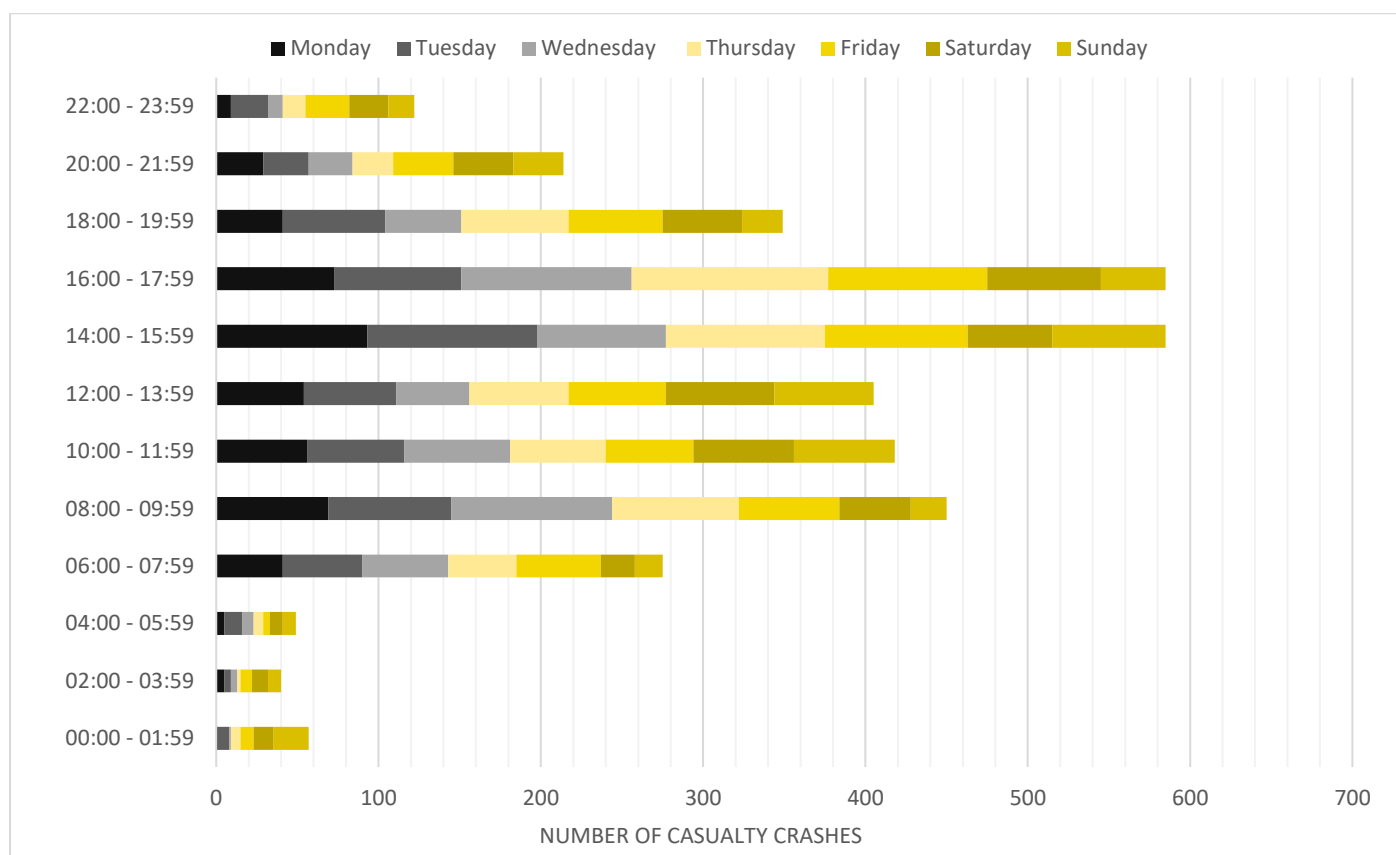
**Table 8: Crashes and Casualties during Holiday Periods by Severity**

Period	Crashes					Casualties			
	Fatal Crashes	Serious Injury Crashes	Minor Injury Crashes	Property Damage Crashes	ALL CRASHES	Lives lost	Serious Injuries	Minor Injuries	ALL CASUALTIES
New Year (1 January) (1 Day)	0	1	2	14	17	0	1	3	4
Australia Day Weekend (26 January - 26 January) (1 Days)	0	1	2	17	20	0	1	3	4
Adelaide Cup (11 March - 13 March) (3 Days)	0	10	17	58	85	0	10	33	43
Easter (7 April - 10 April) (4 Days)	0	6	19	59	84	0	7	22	29
Anzac Day Public Holiday (25 April) (1 Day)	0	2	14	14	30	0	2	21	23
King's Birthday (10 June - 12 June) (3 Days)	0	1	14	59	74	0	3	19	22
Labour Day (30 September - 2 October) (3 Days)	0	4	16	51	71	0	8	18	26
Christmas Period (24 December - 31 December) (8 Days)	4	13	42	128	187	5	15	52	72
<b>SCHOOL HOLIDAYS</b>									
January (1 January - 29 January) (29 Days)	8	72	205	647	932	9	85	262	356
April (15 April - 30 April) (16 Days)	2	31	121	342	496	2	33	144	179
July (8 July - 23 July) (16 Days)	3	22	107	351	483	3	24	140	167
September (30 September - 15 October) (16 Days)	2	22	108	370	502	2	28	138	168
December (16 December - 31 December) (16 Days)	8	25	97	335	465	9	31	125	165

**Table 9a: Casualty Crashes by Time of Day, Day of Week**

Time Period	Day of Week							TOTAL
	Monday	Tuesday	Wednesday	Thursday	Friday	Saturday	Sunday	
00:00 - 01:59	9	6	11	8	7	13	17	71
02:00 - 03:59	3	4	8	5	6	11	11	48
04:00 - 05:59	10	7	9	6	10	16	6	64
06:00 - 07:59	49	36	48	54	51	23	11	272
08:00 - 09:59	70	91	100	87	82	50	25	505
10:00 - 11:59	52	55	59	48	64	59	55	392
12:00 - 13:59	47	71	72	62	69	75	66	462
14:00 - 15:59	78	95	83	101	108	79	56	600
16:00 - 17:59	100	118	82	103	95	76	57	631
18:00 - 19:59	50	54	55	55	66	49	34	363
20:00 - 21:59	24	27	33	31	32	27	30	204
22:00 - 23:59	11	13	21	17	26	18	13	119
<b>TOTAL</b>	<b>503</b>	<b>577</b>	<b>581</b>	<b>577</b>	<b>616</b>	<b>496</b>	<b>381</b>	<b>3731</b>

**Figure 3: Casualty Crashes by Time of Day, Day of Week**



**Table 9b: Casualties by Time of Day, Day of Week**

Time Period	Day of Week							TOTAL
	Monday	Tuesday	Wednesday	Thursday	Friday	Saturday	Sunday	
00:00 - 01:59	11	9	12	9	7	28	24	100
02:00 - 03:59	3	5	9	5	6	11	13	52
04:00 - 05:59	12	7	9	6	13	16	11	74
06:00 - 07:59	55	43	59	58	62	25	13	315
08:00 - 09:59	96	102	122	105	99	61	25	610
10:00 - 11:59	64	62	67	56	77	72	77	475
12:00 - 13:59	58	83	84	72	82	93	89	561
14:00 - 15:59	96	111	106	116	138	98	90	755
16:00 - 17:59	123	145	99	115	121	89	79	771
18:00 - 19:59	62	68	58	67	84	62	48	449
20:00 - 21:59	27	32	36	45	39	34	42	255
22:00 - 23:59	11	20	27	25	41	27	17	168
<b>TOTAL</b>	<b>618</b>	<b>687</b>	<b>688</b>	<b>679</b>	<b>769</b>	<b>616</b>	<b>528</b>	<b>4585</b>

**Table 9c: All Crashes by Time of Day, Day of Week**

Time Period	Day of Week							TOTAL
	Monday	Tuesday	Wednesday	Thursday	Friday	Saturday	Sunday	
00:00 - 01:59	30	30	31	28	29	55	59	262
02:00 - 03:59	19	15	21	19	15	39	44	172
04:00 - 05:59	38	31	34	20	33	38	41	235
06:00 - 07:59	173	164	158	172	172	74	58	971
08:00 - 09:59	274	310	325	322	258	148	81	1718
10:00 - 11:59	173	180	198	215	214	215	165	1360
12:00 - 13:59	202	241	220	211	252	251	189	1566
14:00 - 15:59	294	351	355	338	351	238	200	2127
16:00 - 17:59	320	415	369	403	394	204	178	2283
18:00 - 19:59	158	180	179	176	217	140	127	1177
20:00 - 21:59	90	90	97	134	118	110	89	728
22:00 - 23:59	52	55	62	63	107	78	50	467
<b>TOTAL</b>	<b>1823</b>	<b>2062</b>	<b>2049</b>	<b>2101</b>	<b>2160</b>	<b>1590</b>	<b>1281</b>	<b>13066</b>

**Table 10: Crashes and Casualties by Month of Year and Severity**

Month	Crashes					Casualties			
	Fatal Crashes	Serious Injury Crashes	Minor Injury Crashes	Property Damage Crashes	ALL CRASHES	Lives lost	Serious Injuries	Minor Injuries	ALL CASUALTIES
January	10	75	229	701	1015	11	88	291	390
February	13	65	259	742	1079	13	69	328	410
March	15	70	278	846	1209	17	91	355	463
April	6	62	223	665	956	6	67	269	342
May	9	61	259	875	1204	10	73	309	392
June	3	50	245	818	1116	3	53	304	360
July	10	55	230	740	1035	10	62	290	362
August	5	57	254	849	1165	5	67	315	387
September	11	48	234	752	1045	11	52	290	353
October	6	57	241	809	1113	8	73	305	386
November	9	68	244	811	1132	10	75	315	400
December	12	44	214	727	997	13	54	273	340
<b>TOTAL</b>	<b>109</b>	<b>712</b>	<b>2910</b>	<b>9335</b>	<b>13066</b>	<b>117</b>	<b>824</b>	<b>3644</b>	<b>4585</b>

**Table 11a: Crashes and Casualties by Crash Type and Severity: Metropolitan Adelaide**

Crash Type	Crashes					Casualties			
	Fatal Crashes	Serious Injury Crashes	Minor Injury Crashes	Property Damage Crashes	ALL CRASHES	Lives lost	Serious Injuries	Minor Injuries	ALL CASUALTIES
<b>MULTI VEHICLE</b>									
Head On	6	23	50	96	175	6	29	90	125
Rear End	2	45	758	2077	2882	2	48	915	965
Side Swipe	2	25	175	1058	1260	2	25	191	218
Right Angle	8	92	528	1722	2350	8	111	668	787
Right Turn	5	54	306	672	1037	5	59	418	482
Hit Parked Vehicle	2	15	110	866	993	2	15	119	136
<b>Sub-total</b>	<b>25</b>	<b>254</b>	<b>1927</b>	<b>6491</b>	<b>8697</b>	<b>25</b>	<b>287</b>	<b>2401</b>	<b>2713</b>
<b>SINGLE VEHICLE</b>									
Hit Fixed Object	15	92	245	1090	1442	15	102	276	393
Hit Animal	0	4	14	47	65	0	4	14	18
Hit Object on Road	0	1	7	33	41	0	1	8	9
Roll Over	7	52	116	97	272	7	54	118	179
Left Road Out of Control	0	0	11	32	43	0	0	13	13
Other	0	4	5	76	85	0	4	5	9
<b>Sub-total</b>	<b>22</b>	<b>153</b>	<b>398</b>	<b>1375</b>	<b>1948</b>	<b>22</b>	<b>165</b>	<b>434</b>	<b>621</b>
<b>HIT PEDESTRIAN</b>									
Hit Pedestrian	14	48	145	162	369	14	49	154	217
<b>Sub-total</b>	<b>14</b>	<b>48</b>	<b>145</b>	<b>162</b>	<b>369</b>	<b>14</b>	<b>49</b>	<b>154</b>	<b>217</b>
<b>TOTAL</b>	<b>61</b>	<b>455</b>	<b>2470</b>	<b>8028</b>	<b>11014</b>	<b>61</b>	<b>501</b>	<b>2989</b>	<b>3551</b>

**Table 11b: Crashes and Casualties by Crash Type and Severity: Regional**

Crash Type	Crashes					Casualties			
	Fatal Crashes	Serious Injury Crashes	Minor Injury Crashes	Property Damage Crashes	ALL CRASHES	Lives lost	Serious Injuries	Minor Injuries	ALL CASUALTIES
<b>MULTI VEHICLE</b>									
Head On	11	15	16	32	74	14	29	44	87
Rear End	3	9	33	106	151	3	12	47	62
Side Swipe	0	8	12	74	94	0	10	18	28
Right Angle	5	29	96	249	379	9	49	156	214
Right Turn	0	4	19	42	65	0	4	37	41
Hit Parked Vehicle	0	5	7	89	101	0	5	7	12
<b>Sub-total</b>	<b>19</b>	<b>70</b>	<b>183</b>	<b>592</b>	<b>864</b>	<b>26</b>	<b>109</b>	<b>309</b>	<b>444</b>
<b>SINGLE VEHICLE</b>									
Hit Fixed Object	13	81	118	388	600	13	92	164	269
Hit Animal	1	12	12	114	139	1	12	13	26
Hit Object on Road	0	2	4	11	17	0	3	5	8
Roll Over	9	76	101	131	317	10	89	140	239
Left Road Out of Control	0	1	13	33	47	0	2	14	16
Other	1	3	2	28	34	1	3	2	6
<b>Sub-total</b>	<b>24</b>	<b>175</b>	<b>250</b>	<b>705</b>	<b>1154</b>	<b>25</b>	<b>201</b>	<b>338</b>	<b>564</b>
<b>HIT PEDESTRIAN</b>									
Hit Pedestrian	5	12	7	10	34	5	13	8	26
<b>Sub-total</b>	<b>5</b>	<b>12</b>	<b>7</b>	<b>10</b>	<b>34</b>	<b>5</b>	<b>13</b>	<b>8</b>	<b>26</b>
<b>TOTAL</b>	<b>48</b>	<b>257</b>	<b>440</b>	<b>1307</b>	<b>2052</b>	<b>56</b>	<b>323</b>	<b>655</b>	<b>1034</b>

**Table 11c: Crashes and Casualties by Crash Type and Severity:  
South Australia**

Crash Type	Crashes					Casualties			
	Fatal Crashes	Serious Injury Crashes	Minor Injury Crashes	Property Damage Crashes	ALL CRASHES	Lives lost	Serious Injuries	Minor Injuries	ALL CASUALTIES
<b>MULTI VEHICLE</b>									
Head On	17	38	66	128	249	20	58	134	212
Rear End	5	54	791	2183	3033	5	60	962	1027
Side Swipe	2	33	187	1132	1354	2	35	209	246
Right Angle	13	121	624	1971	2729	17	160	824	1001
Right Turn	5	58	325	714	1102	5	63	455	523
Hit Parked Vehicle	2	20	117	955	1094	2	20	126	148
<b>Sub-total</b>	<b>44</b>	<b>324</b>	<b>2110</b>	<b>7083</b>	<b>9561</b>	<b>51</b>	<b>396</b>	<b>2710</b>	<b>3157</b>
<b>SINGLE VEHICLE</b>									
Hit Fixed Object	28	173	363	1478	2042	28	194	440	662
Hit Animal	1	16	26	161	204	1	16	27	44
Hit Object on Road	0	3	11	44	58	0	4	13	17
Roll Over	16	128	217	228	589	17	143	258	418
Left Road Out of Control	0	1	24	65	90	0	2	27	29
Other	1	7	7	104	119	1	7	7	15
<b>Sub-total</b>	<b>46</b>	<b>328</b>	<b>648</b>	<b>2080</b>	<b>3102</b>	<b>47</b>	<b>366</b>	<b>772</b>	<b>1185</b>
<b>HIT PEDESTRIAN</b>									
Hit Pedestrian	19	60	152	172	403	19	62	162	243
<b>Sub-total</b>	<b>19</b>	<b>60</b>	<b>152</b>	<b>172</b>	<b>403</b>	<b>19</b>	<b>62</b>	<b>162</b>	<b>243</b>
<b>TOTAL</b>	<b>109</b>	<b>712</b>	<b>2910</b>	<b>9335</b>	<b>13066</b>	<b>117</b>	<b>824</b>	<b>3644</b>	<b>4585</b>

**Table 12: Hit Fixed Object Crashes by Object First Hit and Severity**

Type of Fixed Object	Fatal Crashes	Serious Injury Crashes	Minor Injury Crashes	Property Damage Crashes	ALL CRASHES
Tree	19	72	174	494	759
Traffic Signal Pole	0	3	8	30	41
Pole - not Stobie	0	1	19	99	119
Bridge	0	0	0	6	6
Sign Post	0	8	7	63	78
Stobie Pole	1	14	30	132	177
Other Fixed Obstruction	5	50	104	519	678
Guard Rail	3	25	21	101	150
Wire Rope barrier	0	0	0	34	34
<b>TOTAL</b>	<b>28</b>	<b>173</b>	<b>363</b>	<b>1478</b>	<b>2042</b>

**Table 13: Single Vehicle Crashes<sup>1</sup> by Motor Vehicle Type and Severity**

Type of Vehicle	Fatal Crashes	Serious Injury Crashes	Minor Injury Crashes	Property Damage Crashes	ALL CRASHES
Passenger Vehicle	33	178	451	1813	2475
Light Truck (≤ 4.5 tonnes)	0	1	2	5	8
Heavy Vehicle	2	12	24	183	221
Buses	0	0	1	8	9
Motorcycles	7	101	120	57	285
Bicycles	4	30	45	14	93
Other/E-Scooter	0	6	5	0	11
<b>TOTAL</b>	<b>46</b>	<b>328</b>	<b>648</b>	<b>2080</b>	<b>3102</b>

<sup>1</sup> Single vehicle crashes exclude crash type of hit pedestrian.



Figure 4: Definition for Coding Accidents (DCA)<sup>1</sup>

<p><b>Pedestrian on foot in toy/pram</b></p> <p>100</p>	<p><b>Vehicles from adjacent directions (intersections only)</b></p> <p>110</p>	<p><b>Vehicles from opposing directions</b></p> <p>120</p>	<p><b>Vehicles from same direction</b></p> <p>130</p>	<p><b>Manoeuvring</b></p> <p>140</p>	<p><b>Overtaking</b></p> <p>150</p>	<p><b>On path</b></p> <p>160</p>	<p><b>Off path on straight</b></p> <p>170</p>	<p><b>Off path on curve</b></p> <p>180</p>	<p><b>Passenger and miscellaneous</b></p> <p>190</p>
<p>101</p>	<p>111</p>	<p>121</p>	<p>131</p>	<p>141</p>	<p>151</p>	<p>161</p>	<p>171</p>	<p>181</p>	<p>191</p>
<p>102</p>	<p>112</p>	<p>122</p>	<p>132</p>	<p>142</p>	<p>152</p>	<p>162</p>	<p>172</p>	<p>182</p>	<p>192</p>
<p>103</p>	<p>113</p>	<p>123</p>	<p>133</p>	<p>143</p>	<p>153</p>	<p>163</p>	<p>173</p>	<p>183</p>	<p>193</p>
<p>104</p>	<p>114</p>	<p>124</p>	<p>134</p>	<p>144</p>	<p>154</p>	<p>164</p>	<p>174</p>	<p>184</p>	<p>194</p>
<p>105</p>	<p>115</p>	<p>125</p>	<p>135</p>	<p>145</p>	<p>155</p>	<p>165</p>	<p>175</p>	<p>185</p>	<p>195</p>
<p>106</p>	<p>116</p>	<p>126</p>	<p>136</p>	<p>146</p>	<p>156</p>	<p>166</p>	<p>176</p>	<p>186</p>	<p>196</p>
<p>107</p>	<p>117</p>	<p>127</p>	<p>137</p>	<p>147</p>	<p>157</p>	<p>167</p>	<p>177</p>	<p>187</p>	<p>197</p>
<p>108</p>	<p>118</p>	<p>128</p>	<p>138</p>	<p>148</p>	<p>158</p>	<p>168</p>	<p>178</p>	<p>188</p>	<p>198</p>
<p>109</p>	<p>119</p>	<p>129</p>	<p>139</p>	<p>149</p>	<p>159</p>	<p>169</p>	<p>179</p>	<p>189</p>	<p>199</p>

<sup>1</sup> Definition for Coding Accidents – For more information please see Preface and Definitions & Explanatory Notes.

Table 14a: Crashes and Casualties by Crash Code Type: Metropolitan

Crash Code Type (DCA) <sup>1</sup>	Crashes				ALL CRASHES	Casualties			
	Fatal Crashes	Serious Injury Crashes	Minor Injury Crashes	Property Damage Crashes		Lives lost	Serious Injuries	Minor Injuries	ALL CASUALTIES
<b>PEDESTRIANS</b>									
100	5	16	60	71	152	5	17	64	86
101	0	2	3	7	12	0	2	3	5
102	2	8	32	36	78	2	8	35	45
103	2	2	7	11	22	2	2	7	11
104	0	1	1	3	5	0	1	1	2
105	0	3	4	2	9	0	3	4	7
106	0	2	5	4	11	0	2	5	7
107	1	6	17	16	40	1	6	18	25
108	0	0	4	2	6	0	0	4	4
109	3	7	12	11	33	3	7	13	23
<b>Sub-total</b>	<b>13</b>	<b>47</b>	<b>145</b>	<b>163</b>	<b>368</b>	<b>13</b>	<b>48</b>	<b>154</b>	<b>215</b>
<b>ADJ DIRECTIONS</b>									
110	2	29	149	402	582	2	39	188	229
111	0	8	37	193	238	0	9	47	56
112	0	1	9	11	21	0	1	13	14
113	3	28	163	516	710	3	35	220	258
114	0	0	13	39	52	0	0	14	14
115	0	1	4	14	19	0	1	6	7
116	0	6	49	163	218	0	6	57	63
117	0	0	1	0	1	0	0	1	1
118	0	0	0	2	2	0	0	0	0
119	0	3	15	24	42	0	4	19	23
<b>Sub-total</b>	<b>5</b>	<b>76</b>	<b>440</b>	<b>1364</b>	<b>1885</b>	<b>5</b>	<b>95</b>	<b>565</b>	<b>665</b>
<b>OPP DIRECTIONS</b>									
120	5	21	48	95	169	5	27	86	118
121	5	52	298	657	1012	5	57	408	470
122	0	1	0	0	1	0	1	0	1
123	0	0	8	22	30	0	0	15	15
124	0	0	1	6	7	0	0	1	1
125	0	0	0	0	0	0	0	0	0
129	0	0	1	1	2	0	0	1	1
<b>Sub-total</b>	<b>10</b>	<b>74</b>	<b>356</b>	<b>781</b>	<b>1221</b>	<b>10</b>	<b>85</b>	<b>511</b>	<b>606</b>
<b>SAME DIRECTION</b>									
130	0	39	589	1655	2283	0	40	720	760
131	0	3	90	180	273	0	3	103	106
132	1	3	73	202	279	1	5	85	91
133	1	1	16	133	151	1	1	16	18
134	0	3	36	233	272	0	3	44	47
135	0	3	35	285	323	0	3	35	38
136	0	1	6	66	73	0	1	6	7
137	0	7	28	85	120	0	7	30	37
139	0	0	1	3	4	0	0	1	1
<b>Sub-total</b>	<b>2</b>	<b>60</b>	<b>874</b>	<b>2842</b>	<b>3778</b>	<b>2</b>	<b>63</b>	<b>1040</b>	<b>1105</b>
<b>MANOEUVERING</b>									
140	0	6	37	126	169	0	6	43	49
141	1	0	1	36	38	1	0	1	2
142	0	3	8	57	68	0	3	8	11
143	1	0	4	13	18	1	0	4	5
144	0	0	1	24	25	0	0	1	1
145	0	0	2	34	36	0	0	2	2

<sup>1</sup> Crash Code Type (DCA) - Refer to Figure 4

Table 14a: Crashes and Casualties by Crash Code Type: Metropolitan (cont.)

Crash Code Type (DCA) <sup>1</sup>	Crashes				ALL CRASHES	Casualties			
	Fatal Crashes	Serious Injury Crashes	Minor Injury Crashes	Property Damage Crashes		Lives lost	Serious Injuries	Minor Injuries	ALL CASUALTIES
146	0	4	7	85	96	0	4	7	11
147	2	9	57	233	301	2	9	66	77
148	0	8	24	59	91	0	8	25	33
149	0	2	8	45	55	0	2	9	11
<b>Sub-total</b>	<b>4</b>	<b>32</b>	<b>149</b>	<b>712</b>	<b>897</b>	<b>4</b>	<b>32</b>	<b>166</b>	<b>202</b>
<b>OVERTAKING</b>									
150	1	0	1	1	3	1	0	3	4
151	0	0	1	3	4	0	0	1	1
152	0	1	4	42	47	0	1	4	5
153	0	0	1	7	8	0	0	1	1
154	0	0	1	0	1	0	0	2	2
159	1	0	5	40	46	1	0	5	6
<b>Sub-total</b>	<b>2</b>	<b>1</b>	<b>13</b>	<b>93</b>	<b>109</b>	<b>2</b>	<b>1</b>	<b>16</b>	<b>19</b>
<b>ON PATH</b>									
160	0	10	78	630	718	0	10	85	95
161	0	0	0	0	0	0	0	0	0
162	0	1	2	8	11	0	1	2	3
163	1	2	15	24	42	1	2	16	19
164	1	2	1	30	34	1	2	1	4
165	0	0	1	5	6	0	0	1	1
166	0	1	6	31	38	0	1	7	8
167	0	4	14	47	65	0	4	14	18
169	1	2	9	103	115	1	2	9	12
<b>Sub-total</b>	<b>3</b>	<b>22</b>	<b>126</b>	<b>878</b>	<b>1029</b>	<b>3</b>	<b>22</b>	<b>135</b>	<b>160</b>
<b>OFF PATH, STRAIGHT</b>									
170	0	0	9	13	22	0	0	9	9
171	3	24	75	355	457	3	25	81	109
172	0	1	4	10	15	0	1	4	5
173	6	17	53	161	237	6	19	57	82
174	2	31	57	40	130	2	31	57	90
175	1	2	8	22	33	1	2	9	12
176	0	6	23	134	163	0	6	26	32
179	0	0	0	0	0	0	0	0	0
<b>Sub-total</b>	<b>12</b>	<b>81</b>	<b>229</b>	<b>735</b>	<b>1057</b>	<b>12</b>	<b>84</b>	<b>243</b>	<b>339</b>
<b>OFF PATH, CURVE</b>									
180	0	1	8	9	18	0	1	8	9
181	4	23	46	130	203	4	30	56	90
182	0	3	8	5	16	0	3	11	14
183	2	16	26	113	157	2	18	32	52
184	2	9	18	15	44	2	9	18	29
189	0	5	25	92	122	0	5	27	32
<b>Sub-total</b>	<b>8</b>	<b>57</b>	<b>131</b>	<b>364</b>	<b>560</b>	<b>8</b>	<b>66</b>	<b>152</b>	<b>226</b>
<b>MISCELLANEOUS</b>									
190	0	3	3	1	7	0	3	3	6
191	0	0	1	46	47	0	0	1	1
192	1	0	0	2	3	1	0	0	1
193	0	0	0	4	4	0	0	0	0
194	1	1	2	17	21	1	1	2	4
199	0	1	1	26	28	0	1	1	2
<b>Sub-total</b>	<b>2</b>	<b>5</b>	<b>7</b>	<b>96</b>	<b>110</b>	<b>2</b>	<b>5</b>	<b>7</b>	<b>14</b>
<b>TOTAL</b>	<b>61</b>	<b>455</b>	<b>2470</b>	<b>8028</b>	<b>11014</b>	<b>61</b>	<b>501</b>	<b>2989</b>	<b>3551</b>

<sup>1</sup> Crash Code Type (DCA) - Refer to Figure 4

Table 14b: Crashes and Casualties by Crash Code Type: Regional

Crash Code Type (DCA) <sup>1</sup>	Crashes				Casualties					
	Fatal Crashes	Serious Injury Crashes	Minor Injury Crashes	Property Damage Crashes	ALL CRASHES	Lives lost	Serious Injuries	Minor Injuries	ALL CASUALTIES	
<b>PEDESTRIANS</b>										
100	1	1	0	3	5	1	1	0	2	
101	0	0	0	0	0	0	0	0	0	
102	0	1	3	3	7	0	1	3	4	
103	2	1	1	0	4	2	1	1	4	
104	0	1	1	0	2	0	1	1	2	
105	0	1	0	0	1	0	1	0	1	
106	0	0	0	0	0	0	0	0	0	
107	0	0	1	2	3	0	0	1	1	
108	0	0	0	0	0	0	0	0	0	
109	1	6	1	2	10	1	7	2	10	
<b>Sub-total</b>	<b>4</b>	<b>11</b>	<b>7</b>	<b>10</b>	<b>32</b>	<b>4</b>	<b>12</b>	<b>8</b>	<b>24</b>	
<b>ADJ DIRECTIONS</b>										
110	4	15	53	108	180	7	29	88	124	
111	0	3	9	18	30	0	4	12	16	
112	0	0	1	1	2	0	0	1	1	
113	0	8	17	56	81	0	11	25	36	
114	0	0	0	4	4	0	0	0	0	
115	0	0	4	1	5	0	0	12	12	
116	0	0	4	18	22	0	0	5	5	
117	0	0	0	1	1	0	0	0	0	
118	0	0	0	0	0	0	0	0	0	
119	0	0	1	2	3	0	0	1	1	
<b>Sub-total</b>	<b>4</b>	<b>26</b>	<b>89</b>	<b>209</b>	<b>328</b>	<b>7</b>	<b>44</b>	<b>144</b>	<b>195</b>	
<b>OPP DIRECTIONS</b>										
120	10	13	16	28	67	13	26	44	83	
121	0	3	19	38	60	0	3	36	39	
122	0	0	0	0	0	0	0	0	0	
123	0	0	0	1	1	0	0	0	0	
124	0	0	0	0	0	0	0	0	0	
125	0	0	0	0	0	0	0	0	0	
129	0	0	0	3	3	0	0	0	0	
<b>Sub-total</b>	<b>10</b>	<b>16</b>	<b>35</b>	<b>70</b>	<b>131</b>	<b>13</b>	<b>29</b>	<b>80</b>	<b>122</b>	
<b>SAME DIRECTION</b>										
130	1	9	16	55	81	1	11	26	38	
131	0	0	2	10	12	0	0	3	3	
132	2	0	14	36	52	2	1	17	20	
133	0	0	1	7	8	0	0	1	1	
134	0	0	1	5	6	0	0	1	1	
135	0	1	0	9	10	0	1	0	1	
136	0	0	1	2	3	0	0	1	1	
137	0	0	2	0	2	0	0	2	2	
139	0	0	0	0	0	0	0	0	0	
<b>Sub-total</b>	<b>3</b>	<b>10</b>	<b>37</b>	<b>124</b>	<b>174</b>	<b>3</b>	<b>13</b>	<b>51</b>	<b>67</b>	
<b>MANOEUVERING</b>										
140	0	5	2	26	33	0	6	7	13	
141	0	0	0	3	3	0	0	0	0	
142	0	0	0	8	8	0	0	0	0	
143	0	0	1	2	3	0	0	1	1	
144	0	1	0	7	8	0	1	0	1	
145	0	0	0	3	3	0	0	0	0	

<sup>1</sup> Crash Code Type (DCA) - Refer to Figure 4

Table 14b: Crashes and Casualties by Crash Code Type: Regional (cont.)

Crash Code Type (DCA) <sup>1</sup>	Crashes				Casualties				
	Fatal Crashes	Serious Injury Crashes	Minor Injury Crashes	Property Damage Crashes	ALL CRASHES	Lives lost	Serious Injuries	Minor Injuries	ALL CASUALTIES
146	0	1	1	11	13	0	1	1	2
147	0	1	4	32	37	0	2	6	8
148	0	1	2	1	4	0	1	2	3
149	0	1	7	12	20	0	1	9	10
<b>Sub-total</b>	<b>0</b>	<b>10</b>	<b>17</b>	<b>105</b>	<b>132</b>	<b>0</b>	<b>12</b>	<b>26</b>	<b>38</b>
<b>OVERTAKING</b>									
150	1	2	0	0	3	1	3	0	4
151	0	1	1	1	3	0	1	1	2
152	0	2	4	10	16	0	3	8	11
153	0	0	0	1	1	0	0	0	0
154	0	0	1	1	2	0	0	1	1
159	0	2	0	10	12	0	3	0	3
<b>Sub-total</b>	<b>1</b>	<b>7</b>	<b>6</b>	<b>23</b>	<b>37</b>	<b>1</b>	<b>10</b>	<b>10</b>	<b>21</b>
<b>ON PATH</b>									
160	0	2	6	62	70	0	2	6	8
161	0	0	0	0	0	0	0	0	0
162	0	0	0	1	1	0	0	0	0
163	0	1	0	4	5	0	1	0	1
164	0	0	0	7	7	0	0	0	0
165	0	0	0	3	3	0	0	0	0
166	0	1	4	9	14	0	1	4	5
167	1	12	12	114	139	1	12	13	26
169	0	0	0	3	3	0	0	0	0
<b>Sub-total</b>	<b>1</b>	<b>16</b>	<b>22</b>	<b>203</b>	<b>242</b>	<b>1</b>	<b>16</b>	<b>23</b>	<b>40</b>
<b>OFF PATH, STRAIGHT</b>									
170	1	3	6	9	19	2	3	9	14
171	8	10	17	73	108	8	11	23	42
172	1	2	7	5	15	1	2	11	14
173	3	14	18	65	100	3	15	27	45
174	1	27	28	39	95	1	27	36	64
175	1	4	5	15	25	1	5	8	14
176	0	26	40	108	174	0	32	53	85
179	0	0	1	0	1	0	0	1	1
<b>Sub-total</b>	<b>15</b>	<b>86</b>	<b>122</b>	<b>314</b>	<b>537</b>	<b>16</b>	<b>95</b>	<b>168</b>	<b>279</b>
<b>OFF PATH, CURVE</b>									
180	3	8	8	16	35	3	10	16	29
181	2	19	29	60	110	2	24	37	63
182	0	6	4	11	21	0	7	5	12
183	1	10	13	44	68	1	11	18	30
184	1	10	15	20	46	1	14	20	35
189	0	18	32	66	116	0	22	44	66
<b>Sub-total</b>	<b>7</b>	<b>71</b>	<b>101</b>	<b>217</b>	<b>396</b>	<b>7</b>	<b>88</b>	<b>140</b>	<b>235</b>
<b>MISCELLANEOUS</b>									
190	0	3	1	0	4	0	3	1	4
191	0	0	0	21	21	0	0	0	0
192	1	0	1	0	2	2	0	2	4
193	0	0	0	0	0	0	0	0	0
194	1	1	0	2	4	1	1	0	2
199	1	0	2	9	12	1	0	2	3
<b>Sub-total</b>	<b>3</b>	<b>4</b>	<b>4</b>	<b>32</b>	<b>43</b>	<b>4</b>	<b>4</b>	<b>5</b>	<b>13</b>
<b>TOTAL</b>	<b>48</b>	<b>257</b>	<b>440</b>	<b>1307</b>	<b>2052</b>	<b>56</b>	<b>323</b>	<b>655</b>	<b>1034</b>

<sup>1</sup> Crash Code Type (DCA) - Refer to Figure 4

Table 14c: Crashes and Casualties by Crash Code Type: South Australia

Crash Code Type (DCA) <sup>1</sup>	Crashes				Casualties				
	Fatal Crashes	Serious Injury Crashes	Minor Injury Crashes	Property Damage Crashes	ALL CRASHES	Lives lost	Serious Injuries	Minor Injuries	ALL CASUALTIES
<b>PEDESTRIANS</b>									
100	6	17	60	74	157	6	18	64	88
101	0	2	3	7	12	0	2	3	5
102	2	9	35	39	85	2	9	38	49
103	4	3	8	11	26	4	3	8	15
104	0	2	2	3	7	0	2	2	4
105	0	4	4	2	10	0	4	4	8
106	0	2	5	4	11	0	2	5	7
107	1	6	18	18	43	1	6	19	26
108	0	0	4	2	6	0	0	4	4
109	4	13	13	13	43	4	14	15	33
<b>Sub-total</b>	<b>17</b>	<b>58</b>	<b>152</b>	<b>173</b>	<b>400</b>	<b>17</b>	<b>60</b>	<b>162</b>	<b>239</b>
<b>ADJ DIRECTIONS</b>									
110	6	44	202	510	762	9	68	276	353
111	0	11	46	211	268	0	13	59	72
112	0	1	10	12	23	0	1	14	15
113	3	36	180	572	791	3	46	245	294
114	0	0	13	43	56	0	0	14	14
115	0	1	8	15	24	0	1	18	19
116	0	6	53	181	240	0	6	62	68
117	0	0	1	0	1	0	0	1	1
118	0	0	0	3	3	0	0	0	0
119	0	3	16	26	45	0	4	20	24
<b>Sub-total</b>	<b>9</b>	<b>102</b>	<b>529</b>	<b>1573</b>	<b>2213</b>	<b>12</b>	<b>139</b>	<b>709</b>	<b>860</b>
<b>OPP DIRECTIONS</b>									
120	15	34	64	123	236	18	53	130	201
121	5	55	317	695	1072	5	60	444	509
122	0	1	0	0	1	0	1	0	1
123	0	0	8	23	31	0	0	15	15
124	0	0	1	6	7	0	0	1	1
125	0	0	0	0	0	0	0	0	0
129	0	0	1	4	5	0	0	1	1
<b>Sub-total</b>	<b>20</b>	<b>90</b>	<b>391</b>	<b>851</b>	<b>1352</b>	<b>23</b>	<b>114</b>	<b>591</b>	<b>728</b>
<b>SAME DIRECTION</b>									
130	1	48	605	1710	2364	1	51	746	798
131	0	3	92	190	285	0	3	106	109
132	3	3	87	238	331	3	6	102	111
133	1	1	17	140	159	1	1	17	19
134	0	3	37	238	278	0	3	45	48
135	0	4	35	294	333	0	4	35	39
136	0	1	7	68	76	0	1	7	8
137	0	7	30	85	122	0	7	32	39
139	0	0	1	3	4	0	0	1	1
<b>Sub-total</b>	<b>5</b>	<b>70</b>	<b>911</b>	<b>2966</b>	<b>3952</b>	<b>5</b>	<b>76</b>	<b>1091</b>	<b>1172</b>
<b>MANOEUVERING</b>									
140	0	11	39	152	202	0	12	50	62
141	1	0	1	39	41	1	0	1	2
142	0	3	8	65	76	0	3	8	11
143	1	0	5	15	21	1	0	5	6
144	0	1	1	31	33	0	1	1	2
145	0	0	2	37	39	0	0	2	2

<sup>1</sup> Crash Code Type (DCA) - Refer to Figure 4

Table 14c: Crashes and Casualties by Crash Code Type: South Australia (cont.)

Crash Code Type (DCA) <sup>1</sup>	Crashes					Casualties				
	Fatal Crashes	Serious Injury Crashes	Minor Injury Crashes	Property Damage Crashes	ALL CRASHES	Lives lost	Serious Injuries	Minor Injuries	ALL CASUALTIES	
146	0	5	8	96	109	0	5	8	13	
147	2	10	61	265	338	2	11	72	85	
148	0	9	26	60	95	0	9	27	36	
149	0	3	15	57	75	0	3	18	21	
<b>Sub-total</b>	<b>4</b>	<b>42</b>	<b>166</b>	<b>817</b>	<b>1029</b>	<b>4</b>	<b>44</b>	<b>192</b>	<b>240</b>	
<b>OVERTAKING</b>										
150	2	2	1	1	6	2	3	3	8	
151	0	1	2	4	7	0	1	2	3	
152	0	3	8	52	63	0	4	12	16	
153	0	0	1	8	9	0	0	1	1	
154	0	0	2	1	3	0	0	3	3	
159	1	2	5	50	58	1	3	5	9	
<b>Sub-total</b>	<b>3</b>	<b>8</b>	<b>19</b>	<b>116</b>	<b>146</b>	<b>3</b>	<b>11</b>	<b>26</b>	<b>40</b>	
<b>ON PATH</b>										
160	0	12	84	692	788	0	12	91	103	
161	0	0	0	0	0	0	0	0	0	
162	0	1	2	9	12	0	1	2	3	
163	1	3	15	28	47	1	3	16	20	
164	1	2	1	37	41	1	2	1	4	
165	0	0	1	8	9	0	0	1	1	
166	0	2	10	40	52	0	2	11	13	
167	1	16	26	161	204	1	16	27	44	
169	1	2	9	106	118	1	2	9	12	
<b>Sub-total</b>	<b>4</b>	<b>38</b>	<b>148</b>	<b>1081</b>	<b>1271</b>	<b>4</b>	<b>38</b>	<b>158</b>	<b>200</b>	
<b>OFF PATH, STRAIGHT</b>										
170	1	3	15	22	41	2	3	18	23	
171	11	34	92	428	565	11	36	104	151	
172	1	3	11	15	30	1	3	15	19	
173	9	31	71	226	337	9	34	84	127	
174	3	58	85	79	225	3	58	93	154	
175	2	6	13	37	58	2	7	17	26	
176	0	32	63	242	337	0	38	79	117	
179	0	0	1	0	1	0	0	1	1	
<b>Sub-total</b>	<b>27</b>	<b>167</b>	<b>351</b>	<b>1049</b>	<b>1594</b>	<b>28</b>	<b>179</b>	<b>411</b>	<b>618</b>	
<b>OFF PATH, CURVE</b>										
180	3	9	16	25	53	3	11	24	38	
181	6	42	75	190	313	6	54	93	153	
182	0	9	12	16	37	0	10	16	26	
183	3	26	39	157	225	3	29	50	82	
184	3	19	33	35	90	3	23	38	64	
189	0	23	57	158	238	0	27	71	98	
<b>Sub-total</b>	<b>15</b>	<b>128</b>	<b>232</b>	<b>581</b>	<b>956</b>	<b>15</b>	<b>154</b>	<b>292</b>	<b>461</b>	
<b>MISCELLANEOUS</b>										
190	0	6	4	1	11	0	6	4	10	
191	0	0	1	67	68	0	0	1	1	
192	2	0	1	2	5	3	0	2	5	
193	0	0	0	4	4	0	0	0	0	
194	2	2	2	19	25	2	2	2	6	
199	1	1	3	35	40	1	1	3	5	
<b>Sub-total</b>	<b>5</b>	<b>9</b>	<b>11</b>	<b>128</b>	<b>153</b>	<b>6</b>	<b>9</b>	<b>12</b>	<b>27</b>	
<b>TOTAL</b>	<b>109</b>	<b>712</b>	<b>2910</b>	<b>9335</b>	<b>13066</b>	<b>117</b>	<b>824</b>	<b>3644</b>	<b>4585</b>	

<sup>1</sup> Crash Code Type (DCA) - Refer to Figure 4

**Table 15a: Crashes and Casualties by Location Type and Severity: Metropolitan Adelaide**

Location Type	Crashes				ALL CRASHES	Casualties			
	Fatal Crashes	Serious Injury Crashes	Minor Injury Crashes	Property Damage Crashes		Lives lost	Serious Injuries	Minor Injuries	ALL CASUALTIES
<b>INTERSECTION</b>									
Interchange	0	1	6	12	19	0	1	8	9
Cross Road	6	94	661	1864	2625	6	108	820	934
Y-Junction	0	1	4	8	13	0	1	4	5
T-Junction	8	109	642	1920	2679	8	122	807	937
Multiple	0	4	31	99	134	0	4	37	41
Rail Crossing	0	0	2	9	11	0	0	2	2
<b>Sub-total</b>	<b>14</b>	<b>209</b>	<b>1346</b>	<b>3912</b>	<b>5481</b>	<b>14</b>	<b>236</b>	<b>1678</b>	<b>1928</b>
<b>MID BLOCK</b>									
Crossover	0	0	0	2	2	0	0	0	0
Rail Crossing	1	1	4	17	23	1	1	5	7
Divided Road	11	76	439	1620	2146	11	78	509	598
Not Divided	28	152	599	2141	2920	28	168	705	901
One Way	0	0	5	21	26	0	0	5	5
Freeway	0	8	43	236	287	0	8	50	58
Ramp On	0	0	1	9	10	0	0	1	1
Ramp Off	0	1	3	18	22	0	1	4	5
Pedestrian Crossing	3	5	23	43	74	3	6	25	34
Other Midblock	4	3	7	9	23	4	3	7	14
<b>Sub-total</b>	<b>47</b>	<b>246</b>	<b>1124</b>	<b>4116</b>	<b>5533</b>	<b>47</b>	<b>265</b>	<b>1311</b>	<b>1623</b>
<b>TOTAL</b>	<b>61</b>	<b>455</b>	<b>2470</b>	<b>8028</b>	<b>11014</b>	<b>61</b>	<b>501</b>	<b>2989</b>	<b>3551</b>

**Table 15b: Crashes and Casualties by Location Type and Severity: Regional**

Location Type	Crashes				ALL CRASHES	Casualties			
	Fatal Crashes	Serious Injury Crashes	Minor Injury Crashes	Property Damage Crashes		Lives lost	Serious Injuries	Minor Injuries	ALL CASUALTIES
<b>INTERSECTION</b>									
Interchange	0	0	0	0	0	0	0	0	0
Cross Road	4	22	79	190	295	7	36	127	170
Y-Junction	0	0	0	0	0	0	0	0	0
T-Junction	3	25	75	209	312	3	33	120	156
Multiple	0	1	5	10	16	0	1	6	7
Rail Crossing	0	0	0	0	0	0	0	0	0
<b>Sub-total</b>	<b>7</b>	<b>48</b>	<b>159</b>	<b>409</b>	<b>623</b>	<b>10</b>	<b>70</b>	<b>253</b>	<b>333</b>
<b>MID BLOCK</b>									
Crossover	0	0	0	0	0	0	0	0	0
Rail Crossing	1	0	3	0	4	2	0	4	6
Divided Road	1	12	12	70	95	1	12	16	29
Not Divided	36	188	259	805	1288	40	231	372	643
One Way	0	0	1	3	4	0	0	1	1
Freeway	1	1	0	11	13	1	1	0	2
Ramp On	0	0	0	0	0	0	0	0	0
Ramp Off	0	0	0	0	0	0	0	0	0
Pedestrian Crossing	0	0	1	2	3	0	0	1	1
Other Midblock	2	8	5	7	22	2	9	8	19
<b>Sub-total</b>	<b>41</b>	<b>209</b>	<b>281</b>	<b>898</b>	<b>1429</b>	<b>46</b>	<b>253</b>	<b>402</b>	<b>701</b>
<b>TOTAL</b>	<b>48</b>	<b>257</b>	<b>440</b>	<b>1307</b>	<b>2052</b>	<b>56</b>	<b>323</b>	<b>655</b>	<b>1034</b>



**Table 15c: Crashes and Casualties by Location Type and Severity:  
South Australia**

Location Type	Crashes				Casualties				
	Fatal Crashes	Serious Injury Crashes	Minor Injury Crashes	Property Damage Crashes	ALL CRASHES	Lives lost	Serious Injuries	Minor Injuries	ALL CASUALTIES
<b>INTERSECTION</b>									
Interchange	0	1	6	12	19	0	1	8	9
Cross Road	10	116	740	2054	2920	13	144	947	1104
Y- Junction	0	1	4	8	13	0	1	4	5
T-Junction	11	134	717	2129	2991	11	155	927	1093
Multiple	0	5	36	109	150	0	5	43	48
Rail Crossing	0	0	2	9	11	0	0	2	2
<b>Sub-total</b>	<b>21</b>	<b>257</b>	<b>1505</b>	<b>4321</b>	<b>6104</b>	<b>24</b>	<b>306</b>	<b>1931</b>	<b>2261</b>
<b>MID BLOCK</b>									
Crossover	0	0	0	2	2	0	0	0	0
Rail Crossing	2	1	7	17	27	3	1	9	13
Divided Road	12	88	451	1690	2241	12	90	525	627
Not Divided	64	340	858	2946	4208	68	399	1077	1544
One Way	0	0	6	24	30	0	0	6	6
Freeway	1	9	43	247	300	1	9	50	60
Ramp On	0	0	1	9	10	0	0	1	1
Ramp Off	0	1	3	18	22	0	1	4	5
Pedestrian Crossing	3	5	24	45	77	3	6	26	35
Other	6	11	12	16	45	6	12	15	33
<b>Sub-total</b>	<b>88</b>	<b>455</b>	<b>1405</b>	<b>5014</b>	<b>6962</b>	<b>93</b>	<b>518</b>	<b>1713</b>	<b>2324</b>
<b>TOTAL</b>	<b>109</b>	<b>712</b>	<b>2910</b>	<b>9335</b>	<b>13066</b>	<b>117</b>	<b>824</b>	<b>3644</b>	<b>4585</b>

**Table 16a: Crashes and Casualties by Traffic Control and Severity:  
Metropolitan Adelaide**

Traffic Control	Crashes				Casualties				
	Fatal Crashes	Serious Injury Crashes	Minor Injury Crashes	Property Damage Crashes	ALL CRASHES	Lives lost	Serious Injuries	Minor Injuries	ALL CASUALTIES
<b>INTERSECTION</b>									
Traffic Signals	6	73	590	1599	2268	6	82	748	836
Give Way Sign	2	34	164	547	747	2	43	214	259
Stop Sign	1	16	114	280	411	1	18	151	170
Roundabout	1	18	125	394	538	1	18	136	155
No Control	4	68	353	1092	1517	4	75	429	508
<b>Sub-total</b>	<b>14</b>	<b>209</b>	<b>1346</b>	<b>3912</b>	<b>5481</b>	<b>14</b>	<b>236</b>	<b>1678</b>	<b>1928</b>
<b>MID BLOCK</b>									
Traffic Signals	3	5	18	36	62	3	6	20	29
Give Way Sign	0	0	1	1	2	0	0	1	1
Stop Sign	0	1	0	0	1	0	1	0	1
Roundabout	0	0	0	2	2	0	0	0	0
No Control	43	240	1098	4056	5437	43	258	1282	1583
Rail Xing-Boom	1	0	2	13	16	1	0	2	3
Rail Xing-Flashing	0	0	0	0	0	0	0	0	0
Rail Xing-Traffic Signals	0	0	2	3	5	0	0	3	3
Rail Xing-No Control	0	0	0	1	1	0	0	0	0
Other	0	0	3	4	7	0	0	3	3
<b>Sub-total</b>	<b>47</b>	<b>246</b>	<b>1124</b>	<b>4116</b>	<b>5533</b>	<b>47</b>	<b>265</b>	<b>1311</b>	<b>1623</b>
<b>TOTAL</b>	<b>61</b>	<b>455</b>	<b>2470</b>	<b>8028</b>	<b>11014</b>	<b>61</b>	<b>501</b>	<b>2989</b>	<b>3551</b>

**Table 16b: Crashes and Casualties by Traffic Control and Severity: Regional**

Traffic Control	Crashes				Casualties				
	Fatal Crashes	Serious Injury Crashes	Minor Injury Crashes	Property Damage Crashes	ALL CRASHES	Lives lost	Serious Injuries	Minor Injuries	ALL CASUALTIES
<b>INTERSECTION</b>									
Traffic Signals	0	2	7	25	34	0	2	11	13
Give Way Sign	5	24	70	146	245	8	39	121	168
Stop Sign	0	2	15	31	48	0	2	23	25
Roundabout	0	4	12	48	64	0	4	16	20
No Control	2	16	55	159	232	2	23	82	107
Rail Xing-Boom	0	0	0	0	0	0	0	0	0
<b>Sub-total</b>	<b>7</b>	<b>48</b>	<b>159</b>	<b>409</b>	<b>623</b>	<b>10</b>	<b>70</b>	<b>253</b>	<b>333</b>
<b>MID BLOCK</b>									
Traffic Signals	0	0	1	3	4	0	0	1	1
Give Way Sign	0	0	1	0	1	0	0	1	1
Stop Sign	0	0	0	0	0	0	0	0	0
Roundabout	0	0	0	0	0	0	0	0	0
No Control	40	209	276	895	1420	44	253	396	693
Rail Xing-Boom	0	0	1	0	1	0	0	1	1
Rail Xing-Flashing	1	0	1	0	2	2	0	2	4
Rail Xing-Traffic Signals	0	0	0	0	0	0	0	0	0
Rail Xing-No Control	0	0	0	0	0	0	0	0	0
Other	0	0	1	0	1	0	0	1	1
<b>Sub-total</b>	<b>41</b>	<b>209</b>	<b>281</b>	<b>898</b>	<b>1429</b>	<b>46</b>	<b>253</b>	<b>402</b>	<b>701</b>
<b>TOTAL</b>	<b>48</b>	<b>257</b>	<b>440</b>	<b>1307</b>	<b>2052</b>	<b>56</b>	<b>323</b>	<b>655</b>	<b>1034</b>

**Table 16c: Crashes and Casualties by Traffic Control and Severity: South Australia**

Traffic Control	Crashes				Casualties				
	Fatal Crashes	Serious Injury Crashes	Minor Injury Crashes	Property Damage Crashes	ALL CRASHES	Lives lost	Serious Injuries	Minor Injuries	ALL CASUALTIES
Traffic Signals	6	75	597	1624	2302	6	84	759	849
Give Way Sign	7	58	234	693	992	10	82	335	427
Stop Sign	1	18	129	311	459	1	20	174	195
Roundabout	1	22	137	442	602	1	22	152	175
No Control	6	84	408	1251	1749	6	98	511	615
Rail Xing-Boom	0	0	0	0	0	0	0	0	0
<b>Sub-total</b>	<b>21</b>	<b>257</b>	<b>1505</b>	<b>4321</b>	<b>6104</b>	<b>24</b>	<b>306</b>	<b>1931</b>	<b>2261</b>
<b>MID BLOCK</b>									
Traffic Signals	3	5	19	39	66	3	6	21	30
Give Way Sign	0	0	2	1	3	0	0	2	2
Stop Sign	0	1	0	0	1	0	1	0	1
Roundabout	0	0	0	2	2	0	0	0	0
No Control	83	449	1374	4951	6857	87	511	1678	2276
Rail Xing-Boom	1	0	3	13	17	1	0	3	4
Rail Xing-Flashing	1	0	1	0	2	2	0	2	4
Rail Xing-Traffic Signals	0	0	2	3	5	0	0	3	3
Rail Xing-No Control	0	0	0	1	1	0	0	0	0
Other	0	0	4	4	8	0	0	4	4
<b>Sub-total</b>	<b>88</b>	<b>455</b>	<b>1405</b>	<b>5014</b>	<b>6962</b>	<b>93</b>	<b>518</b>	<b>1713</b>	<b>2324</b>
<b>TOTAL</b>	<b>109</b>	<b>712</b>	<b>2910</b>	<b>9335</b>	<b>13066</b>	<b>117</b>	<b>824</b>	<b>3644</b>	<b>4585</b>

**Table 17: Crashes and Casualties by Area Speed Limit, Region & Severity**

Area Speed Limit	Crashes				Casualties				
	Fatal Crashes	Serious Injury Crashes	Minor Injury Crashes	Property Damage Crashes	ALL CRASHES	Lives lost	Serious Injuries	Minor Injuries	ALL CASUALTIES
<b>METROPOLITAN</b>									
<50km/h	6	11	56	226	299	6	11	60	77
50km/h	13	109	569	2218	2909	13	114	630	757
60km/h	24	212	1394	4265	5895	24	229	1708	1961
70km/h	1	13	86	261	361	1	17	120	138
80km/h	12	76	248	652	988	12	89	320	421
90km/h	1	11	35	130	177	1	12	48	61
100km/h	3	16	50	135	204	3	21	62	86
110km/h	1	7	32	141	181	1	8	41	50
<b>Sub-total</b>	<b>61</b>	<b>455</b>	<b>2470</b>	<b>8028</b>	<b>11014</b>	<b>61</b>	<b>501</b>	<b>2989</b>	<b>3551</b>
<b>REGIONAL</b>									
<50km/h	2	12	6	23	43	2	14	9	25
50km/h	4	35	99	337	475	4	36	130	170
60km/h	1	18	44	171	234	1	20	63	84
70km/h	0	0	0	4	4	0	0	0	0
80km/h	5	22	52	138	217	5	23	77	105
90km/h	0	9	7	15	31	0	9	8	17
100km/h	17	100	159	344	620	20	140	241	401
110km/h	19	61	73	275	428	24	81	127	232
<b>Sub-total</b>	<b>48</b>	<b>257</b>	<b>440</b>	<b>1307</b>	<b>2052</b>	<b>56</b>	<b>323</b>	<b>655</b>	<b>1034</b>
<b>TOTAL</b>	<b>109</b>	<b>712</b>	<b>2910</b>	<b>9335</b>	<b>13066</b>	<b>117</b>	<b>824</b>	<b>3644</b>	<b>4585</b>

**Table 18: Crashes and Casualties by Light Conditions, Region & Severity**

Light Conditions & Region	Crashes				Casualties				
	Fatal Crashes	Serious Injury Crashes	Minor Injury Crashes	Property Damage Crashes	ALL CRASHES	Lives lost	Serious Injuries	Minor Injuries	ALL CASUALTIES
<b>METROPOLITAN</b>									
Daylight	37	312	2004	6169	8522	37	335	2409	2781
Night	24	143	466	1859	2492	24	166	580	770
<b>Sub-total</b>	<b>61</b>	<b>455</b>	<b>2470</b>	<b>8028</b>	<b>11014</b>	<b>61</b>	<b>501</b>	<b>2989</b>	<b>3551</b>
<b>REGIONAL</b>									
Daylight	31	177	335	926	1469	39	224	494	757
Night	17	80	105	381	583	17	99	161	277
<b>Sub-total</b>	<b>48</b>	<b>257</b>	<b>440</b>	<b>1307</b>	<b>2052</b>	<b>56</b>	<b>323</b>	<b>655</b>	<b>1034</b>
<b>TOTAL</b>	<b>109</b>	<b>712</b>	<b>2910</b>	<b>9335</b>	<b>13066</b>	<b>117</b>	<b>824</b>	<b>3644</b>	<b>4585</b>

**Table 19: Crashes and Casualties by Vertical Alignment, Region & Severity**

Vertical Alignment & Region	Crashes				Casualties				
	Fatal Crashes	Serious Injury Crashes	Minor Injury Crashes	Property Damage Crashes	ALL CRASHES	Lives lost	Serious Injuries	Minor Injuries	ALL CASUALTIES
<b>METROPOLITAN</b>									
Level	43	353	2089	6986	<b>9471</b>	43	386	2534	<b>2963</b>
Crest of Hill	1	12	42	112	<b>167</b>	1	15	47	<b>63</b>
Bottom of Hill	0	11	35	74	<b>120</b>	0	11	43	<b>54</b>
Slope	17	79	299	833	<b>1228</b>	17	89	360	<b>466</b>
Unknown	0	0	5	23	<b>28</b>	0	0	5	<b>5</b>
<b>Sub-total</b>	<b>61</b>	<b>455</b>	<b>2470</b>	<b>8028</b>	<b>11014</b>	<b>61</b>	<b>501</b>	<b>2989</b>	<b>3551</b>
<b>REGIONAL</b>									
Level	42	191	315	1016	<b>1564</b>	50	242	478	<b>770</b>
Crest of Hill	1	16	17	56	<b>90</b>	1	17	28	<b>46</b>
Bottom of Hill	0	7	25	37	<b>69</b>	0	7	35	<b>42</b>
Slope	5	42	77	173	<b>297</b>	5	56	107	<b>168</b>
Unknown	0	1	6	25	<b>32</b>	0	1	7	<b>8</b>
<b>Sub-total</b>	<b>48</b>	<b>257</b>	<b>440</b>	<b>1307</b>	<b>2052</b>	<b>56</b>	<b>323</b>	<b>655</b>	<b>1034</b>
<b>TOTAL</b>	<b>109</b>	<b>712</b>	<b>2910</b>	<b>9335</b>	<b>13066</b>	<b>117</b>	<b>824</b>	<b>3644</b>	<b>4585</b>

**Table 20: Crashes and Casualties by Horizontal Alignment, Region & Severity**

Horizontal Alignment & Region	Crashes				Casualties				
	Fatal Crashes	Serious Injury Crashes	Minor Injury Crashes	Property Damage Crashes	ALL CRASHES	Lives lost	Serious Injuries	Minor Injuries	ALL CASUALTIES
<b>METROPOLITAN</b>									
Straight	48	351	2148	7095	<b>9642</b>	48	384	2593	<b>3025</b>
Curved, View Obscured	9	40	86	200	<b>335</b>	9	50	115	<b>174</b>
Curved, View Open	4	64	230	715	<b>1013</b>	4	67	275	<b>346</b>
Unknown	0	0	6	18	<b>24</b>	0	0	6	<b>6</b>
<b>Sub-total</b>	<b>61</b>	<b>455</b>	<b>2470</b>	<b>8028</b>	<b>11014</b>	<b>61</b>	<b>501</b>	<b>2989</b>	<b>3551</b>
<b>REGIONAL</b>									
Straight	33	163	300	989	<b>1485</b>	40	199	447	<b>686</b>
Curved, View Obscured	2	32	49	101	<b>184</b>	2	41	83	<b>126</b>
Curved, View Open	13	62	88	204	<b>367</b>	14	83	122	<b>219</b>
Unknown	0	0	3	13	<b>16</b>	0	0	3	<b>3</b>
<b>Sub-total</b>	<b>48</b>	<b>257</b>	<b>440</b>	<b>1307</b>	<b>2052</b>	<b>56</b>	<b>323</b>	<b>655</b>	<b>1034</b>
<b>TOTAL</b>	<b>109</b>	<b>712</b>	<b>2910</b>	<b>9335</b>	<b>13066</b>	<b>117</b>	<b>824</b>	<b>3644</b>	<b>4585</b>

**Table 21: Crashes and Casualties by Road Moisture, Region & Severity**

Road Moisture & Region	Crashes					Casualties			
	Fatal Crashes	Serious Injury Crashes	Minor Injury Crashes	Property Damage Crashes	ALL CRASHES	Lives lost	Serious Injuries	Minor Injuries	ALL CASUALTIES
<b>METROPOLITAN</b>									
Dry	55	402	2164	6881	9502	55	441	2629	3125
Wet	5	52	300	1116	1473	5	59	354	418
Unknown	1	1	6	31	39	1	1	6	8
<b>Sub-total</b>	<b>61</b>	<b>455</b>	<b>2470</b>	<b>8028</b>	<b>11014</b>	<b>61</b>	<b>501</b>	<b>2989</b>	<b>3551</b>
<b>REGIONAL</b>									
Dry	41	223	364	1078	1706	49	282	548	879
Wet	5	30	71	210	316	5	37	100	142
Unknown	2	4	5	19	30	2	4	7	13
<b>Sub-total</b>	<b>48</b>	<b>257</b>	<b>440</b>	<b>1307</b>	<b>2052</b>	<b>56</b>	<b>323</b>	<b>655</b>	<b>1034</b>
<b>TOTAL</b>	<b>109</b>	<b>712</b>	<b>2910</b>	<b>9335</b>	<b>13066</b>	<b>117</b>	<b>824</b>	<b>3644</b>	<b>4585</b>

**Table 22: Crashes and Casualties by Route and Severity**

Route	Crashes					Casualties			
	Fatal Crashes	Serious Injury Crashes	Minor Injury Crashes	Property Damage Crashes	ALL CRASHES	Lives lost	Serious Injuries	Minor Injuries	ALL CASUALTIES
Anzac Highway	2	4	36	92	134	2	5	43	50
Barrier Highway	1	6	4	9	20	2	7	10	19
Cudlee Creek - Lobethal Road	1	0	3	3	7	1	0	8	9
Dukes Highway	1	2	2	19	24	1	3	2	6
Eyre Highway	4	4	7	20	35	4	6	14	24
Gorge Road	0	11	19	39	69	0	12	23	35
Lincoln Highway	1	2	4	24	31	2	4	5	11
Lyndoch - Chain of Ponds Road	1	1	2	9	13	1	4	2	7
Lower North East Road	0	3	3	8	14	0	3	3	6
Horrocks Highway	0	5	11	21	37	0	6	14	20
Main North Road (M) <sup>1</sup>	5	18	108	385	516	5	19	140	164
North East Road	1	4	70	209	284	1	4	75	80
Main South Road	1	1	11	22	35	1	1	16	18
Port Wakefield Road	2	10	23	71	106	2	13	32	47
Princes Highway	1	11	16	52	80	1	11	23	35
Riddoch Highway	3	3	3	18	27	4	7	6	17
South Eastern Freeway <sup>2</sup>	1	5	22	95	123	1	5	27	33
Southern Expressway	0	1	15	53	69	0	1	18	19
Stuart Highway	1	6	4	17	28	2	6	8	16
Sturt Highway	3	8	16	46	73	5	11	28	44
Tea Tree Gully - Mannum Road	1	2	13	17	33	1	2	17	20
Victor Harbor Road	2	5	14	50	71	2	11	20	33

<sup>1</sup> From Fitzroy Terrace to Gawler Bypass.<sup>2</sup> Does not include the intersection with Cross Road.

**Table 23a: Crashes and Casualties by Local Government Area & Severity, Metropolitan Adelaide: Council Roads**

Local Government Area	Crashes					Casualties				
	Fatal Crashes	Serious Injury Crashes	Minor Injury Crashes	Property Damage Crashes	ALL CRASHES	Lives lost	Serious Injuries	Minor Injuries	ALL CASUALTIES	
City of Adelaide	2	26	85	321	434	2	28	97	127	
Adelaide Hills Council	2	11	20	82	115	2	12	26	40	
Adelaide Plains Council	1	0	0	3	4	1	0	0	1	
The Barossa Council	0	0	2	0	2	0	0	2	2	
City of Burnside	0	4	18	73	95	0	4	20	24	
Campbelltown City Council	1	4	12	66	83	1	4	13	18	
City of Charles Sturt	1	10	40	169	220	1	10	43	54	
Town of Gawler	0	1	19	36	56	0	1	25	26	
City of Holdfast Bay	0	7	26	85	118	0	7	27	34	
Light Regional Council	0	0	5	11	16	0	0	5	5	
City of Marion	1	9	36	125	171	1	10	42	53	
City of Mitcham	1	3	28	146	178	1	3	33	37	
Mount Barker District Council	0	3	30	55	88	0	3	31	34	
City of Norwood Payneham & St Peters	0	3	14	64	81	0	4	15	19	
City of Onkaparinga	4	29	92	275	400	4	29	112	145	
City of Playford	3	23	95	305	426	3	26	118	147	
City of Prospect	0	2	4	33	39	0	2	4	6	
City of Port Adelaide Enfield	1	7	50	246	304	1	7	57	65	
City of Salisbury	1	13	59	245	318	1	13	66	80	
City of Tea Tree Gully	1	7	17	87	112	1	8	21	30	
City of Unley	1	3	17	69	90	1	3	18	22	
Town of Walkerville	1	0	1	17	19	1	0	1	2	
City of West Torrens	0	6	25	103	134	0	8	28	36	
<b>Total</b>	<b>21</b>	<b>171</b>	<b>695</b>	<b>2616</b>	<b>3503</b>	<b>21</b>	<b>182</b>	<b>804</b>	<b>1007</b>	

**Table 23b: Crashes and Casualties by Local Government Area & Severity, Metropolitan Adelaide: Departmental Roads**

Local Government Area	Crashes				Casualties				
	Fatal Crashes	Serious Injury Crashes	Minor Injury Crashes	Property Damage Crashes	ALL CRASHES	Lives lost	Serious Injuries	Minor Injuries	ALL CASUALTIES
City of Adelaide	1	7	30	122	160	1	7	31	39
Adelaide Hills Council	6	31	75	180	292	6	36	96	138
Adelaide Plains Council	2	2	6	8	18	2	4	9	15
The Barossa Council	0	0	0	0	0	0	0	0	0
City of Burnside	1	4	37	174	216	1	4	52	57
Campbelltown City Council	0	10	59	136	205	0	10	67	77
City of Charles Sturt	3	21	164	445	633	3	25	188	216
Town of Gawler	0	4	24	61	89	0	5	34	39
City of Holdfast Bay	0	4	33	107	144	0	4	38	42
Light Regional Council	0	4	11	34	49	0	4	15	19
City of Marion	1	15	105	378	499	1	16	130	147
City of Mitcham	3	16	95	310	424	3	17	113	133
Mount Barker District Council	2	8	40	122	172	2	11	50	63
City of Norwood Payneham & St Peters	1	7	108	304	420	1	8	117	126
City of Onkaparinga	4	27	133	337	501	4	38	173	215
City of Playford	2	14	103	310	429	2	15	141	158
City of Prospect	0	2	35	142	179	0	2	44	46
City of Port Adelaide Enfield	5	33	226	727	991	5	33	277	315
City of Salisbury	6	24	173	569	772	6	26	220	252
City of Tea Tree Gully	0	9	92	240	341	0	9	114	123
City of Unley	0	10	50	187	247	0	12	68	80
Town of Walkerville	1	8	26	92	127	1	8	35	44
City of West Torrens	2	24	150	427	603	2	25	173	200
<b>Total</b>	<b>40</b>	<b>284</b>	<b>1775</b>	<b>5412</b>	<b>7511</b>	<b>40</b>	<b>319</b>	<b>2185</b>	<b>2544</b>

**Table 23c: Crashes and Casualties by Local Government Area & Severity, Metropolitan Adelaide: All Roads**

Local Government Area	Crashes				Casualties				
	Fatal Crashes	Serious Injury Crashes	Minor Injury Crashes	Property Damage Crashes	ALL CRASHES	Lives lost	Serious Injuries	Minor Injuries	ALL CASUALTIES
City of Adelaide	3	33	115	443	594	3	35	128	166
Adelaide Hills Council	8	42	95	262	407	8	48	122	178
Adelaide Plains Council	3	2	6	11	22	3	4	9	16
The Barossa Council	0	0	2	0	2	0	0	2	2
City of Burnside	1	8	55	247	311	1	8	72	81
Campbelltown City Council	1	14	71	202	288	1	14	80	95
City of Charles Sturt	4	31	204	614	853	4	35	231	270
Town of Gawler	0	5	43	97	145	0	6	59	65
City of Holdfast Bay	0	11	59	192	262	0	11	65	76
Light Regional Council	0	4	16	45	65	0	4	20	24
City of Marion	2	24	141	503	670	2	26	172	200
City of Mitcham	4	19	123	456	602	4	20	146	170
Mount Barker District Council	2	11	70	177	260	2	14	81	97
City of Norwood Payneham & St Peters	1	10	122	368	501	1	12	132	145
City of Onkaparinga	8	56	225	612	901	8	67	285	360
City of Playford	5	37	198	615	855	5	41	259	305
City of Prospect	0	4	39	175	218	0	4	48	52
City of Port Adelaide Enfield	6	40	276	973	1295	6	40	334	380
City of Salisbury	7	37	232	814	1090	7	39	286	332
City of Tea Tree Gully	1	16	109	327	453	1	17	135	153
City of Unley	1	13	67	256	337	1	15	86	102
Town of Walkerville	2	8	27	109	146	2	8	36	46
City of West Torrens	2	30	175	530	737	2	33	201	236
<b>Total</b>	<b>61</b>	<b>455</b>	<b>2470</b>	<b>8028</b>	<b>11014</b>	<b>61</b>	<b>501</b>	<b>2989</b>	<b>3551</b>



**Table 24a: Crashes and Casualties by Local Government Area & Severity, Regional: Council Roads**

Local Government Area	Crashes				Casualties				
	Fatal Crashes	Serious Injury Crashes	Minor Injury Crashes	Property Damage Crashes	ALL CRASHES	Lives lost	Serious Injuries	Minor Injuries	ALL CASUALTIES
Adelaide Hills Council, The	0	0	0	0	0	0	0	0	0
Adelaide Plains Council	0	1	0	7	8	0	1	0	1
Alexandrina Council	3	7	22	41	73	3	8	25	36
Anangu Pitjantjatjara Yankunytjatjara	0	0	0	2	2	0	0	0	0
The Barossa Council	1	7	6	33	47	1	8	9	18
Barunga West Council	1	1	1	3	6	1	3	2	6
Berri Barmera Council	0	4	7	14	25	0	4	10	14
District Council of Ceduna	1	3	1	1	6	1	4	3	8
Clare and Gilbert Valleys Council	1	1	3	15	20	1	2	5	8
District Council of Cleve	0	1	0	2	3	0	1	0	1
District Council of Coober Pedy	0	0	1	4	5	0	0	1	1
Coorong District Council	0	3	4	4	11	0	4	4	8
Copper Coast Council	0	4	2	11	17	0	4	3	7
District Council of Elliston	0	0	0	2	2	0	0	0	0
The Flinders Ranges Council	0	0	0	3	3	0	0	0	0
District Council of Franklin Harbour	0	0	1	3	4	0	0	1	1
Regional Council of Goyder	1	2	3	8	14	1	2	3	6
District Council of Grant	0	5	7	10	22	0	6	11	17
Kangaroo Island Council	0	7	9	12	28	0	10	15	25
District Council of Karoonda East Murray	0	0	1	3	4	0	0	3	3
District Council of Kimba	0	1	0	1	2	0	1	0	1
Kingston District Council	0	0	2	3	5	0	0	2	2
Light Regional Council	1	3	3	25	32	1	3	4	8
District Council of Lower Eyre Peninsula	0	2	5	5	12	0	2	6	8
District Council of Loxton Waikerie	0	5	3	11	19	0	6	5	11
Mid Murray Council	2	8	3	8	21	2	9	6	17
<b>Sub-total</b>	<b>11</b>	<b>65</b>	<b>84</b>	<b>231</b>	<b>391</b>	<b>11</b>	<b>78</b>	<b>118</b>	<b>207</b>

**Table 24a: Crashes and Casualties by Local Government Area & Severity, Regional: Council Roads (cont.)**

Local Government Area	Crashes				Casualties				
	Fatal Crashes	Serious Injury Crashes	Minor Injury Crashes	Property Damage Crashes	ALL CRASHES	Lives lost	Serious Injuries	Minor Injuries	ALL CASUALTIES
City of Mount Gambier	0	2	13	46	61	0	2	16	18
District Council of Mount Remarkable	0	0	1	1	2	0	0	2	2
Rural City of Murray Bridge	0	4	12	27	43	0	5	20	25
Naracoorte Lucindale Council	0	1	3	12	16	0	1	4	5
Northern Areas Council	0	2	2	1	5	0	3	4	7
City of Onkaparinga	0	1	0	0	1	0	1	0	1
District Council of Ororoo Carrieton	0	0	1	2	3	0	0	1	1
Pastoral Unincorporated	0	2	1	1	4	0	2	1	3
District Council of Peterborough	0	0	1	0	1	0	0	1	1
Port Augusta City Council	1	1	2	16	20	1	1	3	5
City of Port Lincoln	0	3	3	17	23	0	3	3	6
Port Pirie Regional Council	1	5	11	32	49	1	5	15	21
Renmark Paringa Council	0	0	2	16	18	0	0	2	2
District Council of Robe	0	0	0	1	1	0	0	0	0
Municipal Council of Roxby Downs	0	0	0	0	0	0	0	0	0
Southern Mallee District Council	0	1	0	0	1	0	1	0	1
District Council of Streaky Bay	1	0	2	2	5	1	0	2	3
Tatiara District Council	0	1	1	1	3	0	1	4	5
District Council of Tumby Bay	1	2	3	7	13	1	2	4	7
Unincorporated (Eastern)	0	0	0	4	4	0	0	0	0
City of Victor Harbor	1	2	6	19	28	1	4	13	18
Wakefield Regional Council	0	3	5	5	13	0	4	17	21
Wattle Range Council	1	6	7	11	25	1	6	9	16
City of Whyalla	0	3	5	33	41	0	3	5	8
Wudinna District Council	0	1	1	1	3	0	2	2	4
District Council of Yankalilla	0	1	4	15	20	0	1	4	5
Yorke Peninsula Council	1	5	10	23	39	1	7	15	23
<b>Sub-total</b>	<b>7</b>	<b>46</b>	<b>96</b>	<b>293</b>	<b>442</b>	<b>7</b>	<b>54</b>	<b>147</b>	<b>208</b>
<b>TOTAL</b>	<b>18</b>	<b>111</b>	<b>180</b>	<b>524</b>	<b>833</b>	<b>18</b>	<b>132</b>	<b>265</b>	<b>415</b>

**Table 24b: Crashes and Casualties by Local Government Area & Severity, Regional: Departmental Roads**

Local Government Area	Crashes					Casualties				
	Fatal Crashes	Serious Injury Crashes	Minor Injury Crashes	Property Damage Crashes	ALL CRASHES	Lives lost	Serious Injuries	Minor Injuries	ALL CASUALTIES	
Adelaide Hills Council, The	0	0	0	0	0	0	0	0	0	
Adelaide Plains Council	0	2	6	20	28	0	2	7	9	
Alexandrina Council	1	3	24	59	87	1	4	28	33	
Anangu Pitjantjatjara Yankunytjatjara	0	1	0	0	1	0	1	0	1	
The Barossa Council	0	5	16	51	72	0	5	23	28	
Barunga West Council	1	4	5	11	21	1	4	8	13	
Berri Barmera Council	1	1	4	12	18	1	1	5	7	
District Council of Ceduna	0	1	1	8	10	0	1	1	2	
Clare and Gilbert Valleys Council	0	4	9	20	33	0	5	15	20	
District Council of Cleve	0	0	0	2	2	0	0	0	0	
District Council of Coober Pedy	0	1	0	1	2	0	1	0	1	
Coorong District Council	1	2	4	27	34	1	3	5	9	
Copper Coast Council	1	2	4	11	18	1	2	5	8	
District Council of Elliston	0	0	1	3	4	0	0	1	1	
The Flinders Ranges Council	1	1	3	2	7	1	1	3	5	
District Council of Franklin Harbour	0	0	0	6	6	0	0	0	0	
Regional Council of Goyder	0	4	3	7	14	0	4	5	9	
District Council of Grant	1	3	5	16	25	1	3	8	12	
Kangaroo Island Council	0	3	3	10	16	0	3	4	7	
District Council of Karoonda East Murray	1	0	1	6	8	1	0	2	3	
District Council of Kimba	0	1	0	1	2	0	2	0	2	
Kingston District Council	0	3	4	7	14	0	3	7	10	
Light Regional Council	1	9	17	35	62	1	11	31	43	
District Council of Lower Eyre Peninsula	0	0	3	11	14	0	0	5	5	
District Council of Loxton Waikerie	2	2	6	19	29	3	4	10	17	
Mid Murray Council	0	6	13	20	39	0	7	16	23	
<b>Sub-total</b>	<b>11</b>	<b>58</b>	<b>132</b>	<b>365</b>	<b>566</b>	<b>12</b>	<b>67</b>	<b>189</b>	<b>268</b>	

**Table 24b: Crashes and Casualties by Local Government Area & Severity, Regional: Departmental Roads (cont.)**

Local Government Area	Crashes					Casualties			
	Fatal Crashes	Serious Injury Crashes	Minor Injury Crashes	Property Damage Crashes	ALL CRASHES	Lives lost	Serious Injuries	Minor Injuries	ALL CASUALTIES
City of Mount Gambier	0	3	9	43	55	0	3	11	14
District Council of Mount Remarkable	0	2	7	11	20	0	2	7	9
Rural City of Murray Bridge	1	9	14	53	77	1	11	23	35
Naracoorte Lucindale Council	1	1	2	12	16	1	4	6	11
Northern Areas Council	0	3	5	5	13	0	3	6	9
District Council of Ororoo Carrieton	0	2	1	4	7	0	3	1	4
Pastoral Unincorporated	5	22	15	42	84	8	25	25	58
District Council of Peterborough	0	3	2	4	9	0	4	8	12
Port Augusta City Council	1	1	5	22	29	1	2	11	14
City of Port Lincoln	0	3	4	15	22	0	3	5	8
Port Pirie Regional Council	0	4	10	21	35	0	5	14	19
Renmark Paringa Council	2	0	7	18	27	3	0	7	10
District Council of Robe	1	0	0	5	6	1	0	0	1
Municipal Council of Roxby Downs	0	0	0	1	1	0	0	0	0
Southern Mallee District Council	0	1	2	8	11	0	1	2	3
District Council of Streaky Bay	0	0	2	1	3	0	0	4	4
Tatiara District Council	1	2	1	16	20	2	3	1	6
District Council of Tumby Bay	0	0	0	2	2	0	0	0	0
Unincorporated (Eastern)	0	0	0	1	1	0	0	0	0
City of Victor Harbor	1	6	6	20	33	1	13	11	25
Wakefield Regional Council	2	7	11	25	45	4	15	21	40
Wattle Range Council	2	8	7	26	43	2	11	11	24
City of Whyalla	0	2	6	13	21	0	2	7	9
Wudinna District Council	1	0	3	3	7	1	0	6	7
District Council of Yankalilla	1	5	4	21	31	1	10	6	17
Yorke Peninsula Council	0	4	5	26	35	0	4	8	12
<b>Sub-total</b>	<b>19</b>	<b>88</b>	<b>128</b>	<b>418</b>	<b>653</b>	<b>26</b>	<b>124</b>	<b>201</b>	<b>351</b>
<b>TOTAL</b>	<b>30</b>	<b>146</b>	<b>260</b>	<b>783</b>	<b>1219</b>	<b>38</b>	<b>191</b>	<b>390</b>	<b>619</b>

**Table 24c: Crashes and Casualties by Local Government Area & Severity, Regional: All Roads**

Local Government Area	Crashes					Casualties				
	Fatal Crashes	Serious Injury Crashes	Minor Injury Crashes	Property Damage Crashes	ALL CRASHES	Lives lost	Serious Injuries	Minor Injuries	ALL CASUALTIES	
Adelaide Hills Council, The	0	0	0	0	0	0	0	0	0	
Adelaide Plains Council	0	3	6	27	36	0	3	7	10	
Alexandrina Council	4	10	46	100	160	4	12	53	69	
Anangu Pitjantjatjara Yankunytjatjara	0	1	0	2	3	0	1	0	1	
The Barossa Council	1	12	22	84	119	1	13	32	46	
Barunga West Council	2	5	6	14	27	2	7	10	19	
Berri Barmera Council	1	5	11	26	43	1	5	15	21	
District Council of Ceduna	1	4	2	9	16	1	5	4	10	
Clare and Gilbert Valleys Council	1	5	12	35	53	1	7	20	28	
District Council of Cleve	0	1	0	4	5	0	1	0	1	
District Council of Coober Pedy	0	1	1	5	7	0	1	1	2	
Coorong District Council	1	5	8	31	45	1	7	9	17	
Copper Coast Council	1	6	6	22	35	1	6	8	15	
District Council of Elliston	0	0	1	5	6	0	0	1	1	
The Flinders Ranges Council	1	1	3	5	10	1	1	3	5	
District Council of Franklin Harbour	0	0	1	9	10	0	0	1	1	
Regional Council of Goyder	1	6	6	15	28	1	6	8	15	
District Council of Grant	1	8	12	26	47	1	9	19	29	
Kangaroo Island Council	0	10	12	22	44	0	13	19	32	
District Council of Karoonda East Murray	1	0	2	9	12	1	0	5	6	
District Council of Kimba	0	2	0	2	4	0	3	0	3	
Kingston District Council	0	3	6	10	19	0	3	9	12	
Light Regional Council	2	12	20	60	94	2	14	35	51	
District Council of Lower Eyre Peninsula	0	2	8	16	26	0	2	11	13	
District Council of Loxton Waikerie	2	7	9	30	48	3	10	15	28	
Mid Murray Council	2	14	16	28	60	2	16	22	40	
<b>Sub-total</b>	<b>22</b>	<b>123</b>	<b>216</b>	<b>596</b>	<b>957</b>	<b>23</b>	<b>145</b>	<b>307</b>	<b>475</b>	

**Table 24c: Crashes and Casualties by Local Government Area & Severity, Regional: All Roads (cont.)**

Local Government Area	Crashes				Casualties				
	Fatal Crashes	Serious Injury Crashes	Minor Injury Crashes	Property Damage Crashes	ALL CRASHES	Lives lost	Serious Injuries	Minor Injuries	ALL CASUALTIES
City of Mount Gambier	0	5	22	89	116	0	5	27	32
District Council of Mount Remarkable	0	2	8	12	22	0	2	9	11
Regional City of Murray Bridge	1	13	26	80	120	1	16	43	60
Naracoorte Lucindale Council	1	2	5	24	32	1	5	10	16
Northern Areas Council	0	5	7	6	18	0	6	10	16
City of Onkaparinga	0	1	0	0	1	0	1	0	1
District Council of Orroroo Carrieton	0	2	2	6	10	0	3	2	5
Pastoral Unincorporated	5	24	16	43	88	8	27	26	61
District Council of Peterborough	0	3	3	4	10	0	4	9	13
Port Augusta City Council	2	2	7	38	49	2	3	14	19
City of Port Lincoln	0	6	7	32	45	0	6	8	14
Port Pirie Regional Council	1	9	21	53	84	1	10	29	40
Renmark Paringa Council	2	0	9	34	45	3	0	9	12
District Council of Robe	1	0	0	6	7	1	0	0	1
Municipal Council of Roxby Downs	0	1	0	1	2	0	1	0	1
Southern Mallee District Council	1	1	4	10	16	1	1	4	6
District Council of Streaky Bay	0	1	3	2	6	0	1	8	9
Tatiara District Council	2	4	4	23	33	3	5	5	13
District Council of Tumby Bay	0	0	0	6	6	0	0	0	0
Unincorporated (Eastern)	0	0	0	1	1	0	0	0	0
City of Victor Harbor	2	8	12	39	61	2	17	24	43
Wakefield Regional Council	2	10	16	30	58	4	19	38	61
Wattle Range Council	3	14	14	37	68	3	17	20	40
City of Whyalla	0	5	11	46	62	0	5	12	17
Wudinna District Council	1	1	4	4	10	1	2	8	11
District Council of Yankalilla	1	6	8	36	51	1	11	10	22
Yorke Peninsula Council	1	9	15	49	74	1	11	23	35
<b>Sub-total</b>	<b>26</b>	<b>134</b>	<b>224</b>	<b>711</b>	<b>1095</b>	<b>33</b>	<b>178</b>	<b>348</b>	<b>559</b>
<b>TOTAL</b>	<b>48</b>	<b>257</b>	<b>440</b>	<b>1307</b>	<b>2052</b>	<b>56</b>	<b>323</b>	<b>655</b>	<b>1034</b>

**Table 25: Top Intersections with Highest Number of Casualty Crashes 2023**

Intersection	Current Year	Previous Years			
	2023	2022	2021	2020	2019
Henley Beach Road - (Main) South Road	8	5	7	2	4
Stuart Road - Marion Road	7	8	5	7	10
Salisbury Highway - Kings Road	6	0	4	3	5
Munno Para Boulevard - Main North Road	6	1	3	1	4
Marion Road - Henley Beach Road	6	2	4	4	5
Churchill Road - Kilburn Shoppingtown Access Road	6	0	2	2	1
Womma Road - Andrews - Penfield Road	5	0	2	1	1
Salisbury Highway - Park Terrace	5	2	0	1	2
Marion Rd Ramp From Adelaide - Marion Road	5	2	4	3	4
Main North Road - Montague Road	5	2	6	6	9
Main North Road - McIntyre Road	5	2	6	3	5
Grote Street - Morphett Street	5	2	3	1	2
Gallipoli I/CH Ramp - Anzac Highway	5	4	1	2	4
Fullarton Road - Dequetteville Terrace	5	2	3	5	6
Cross Road - Glen Osmond Road	5	1	1	3	2

**Table 26: Motor Vehicles Involved in & Responsible for Crashes by Region and Severity**

Vehicle Type and Region	Fatal Crashes		Serious Injury Crashes		Minor Injury Crashes		Property Damage Crashes		ALL CRASHES	
	Involved	Responsible	Involved	Responsible	Involved	Responsible	Involved	Responsible	Involved	Responsible
<b>PASSENGER VEHICLES</b>										
Metropolitan	61	29	520	288	4206	2074	13497	6620	<b>18284</b>	<b>9011</b>
Regional	59	38	227	164	526	352	1657	994	<b>2469</b>	<b>1548</b>
<b>Sub-total</b>	<b>120</b>	<b>67</b>	<b>747</b>	<b>452</b>	<b>4732</b>	<b>2426</b>	<b>15154</b>	<b>7614</b>	<b>20753</b>	<b>10559</b>
<b>LIGHT TRUCKS (≤ 4.5 tonnes)</b>										
Metropolitan	1	0	1	1	8	6	63	36	<b>73</b>	<b>43</b>
Regional	0	0	2	2	2	2	6	5	<b>10</b>	<b>9</b>
<b>Sub-total</b>	<b>1</b>	<b>0</b>	<b>3</b>	<b>3</b>	<b>10</b>	<b>8</b>	<b>69</b>	<b>41</b>	<b>83</b>	<b>52</b>
<b>HEAVY VEHICLES<sup>1</sup></b>										
Metropolitan	3	1	20	7	82	46	1020	673	<b>1125</b>	<b>727</b>
Regional	10	3	20	10	38	24	187	124	<b>255</b>	<b>161</b>
<b>Sub-total</b>	<b>13</b>	<b>4</b>	<b>40</b>	<b>17</b>	<b>120</b>	<b>70</b>	<b>1207</b>	<b>797</b>	<b>1380</b>	<b>888</b>
<b>BUSES</b>										
Metropolitan	1	0	2	1	22	10	309	163	<b>334</b>	<b>174</b>
Regional	1	0	0	0	0	0	14	7	<b>15</b>	<b>7</b>
<b>Sub-total</b>	<b>2</b>	<b>0</b>	<b>2</b>	<b>1</b>	<b>22</b>	<b>10</b>	<b>323</b>	<b>170</b>	<b>349</b>	<b>181</b>
<b>MOTORCYCLES</b>										
Metropolitan	18	15	121	67	214	117	321	153	<b>674</b>	<b>352</b>
Regional	5	4	76	52	51	37	34	21	<b>166</b>	<b>114</b>
<b>Sub-total</b>	<b>23</b>	<b>19</b>	<b>197</b>	<b>119</b>	<b>265</b>	<b>154</b>	<b>355</b>	<b>174</b>	<b>840</b>	<b>466</b>
<b>BICYCLISTS</b>										
Metropolitan	7	5	86	45	304	93	314	97	<b>711</b>	<b>240</b>
Regional	1	0	9	6	16	6	29	12	<b>55</b>	<b>24</b>
<b>Sub-total</b>	<b>8</b>	<b>5</b>	<b>95</b>	<b>51</b>	<b>320</b>	<b>99</b>	<b>343</b>	<b>109</b>	<b>766</b>	<b>264</b>
<b>OTHER</b>										
Metropolitan	3	0	7	4	25	17	173	96	<b>208</b>	<b>117</b>
Regional	1	0	9	6	6	2	36	18	<b>52</b>	<b>26</b>
<b>Sub-total</b>	<b>4</b>	<b>0</b>	<b>16</b>	<b>10</b>	<b>31</b>	<b>19</b>	<b>209</b>	<b>114</b>	<b>260</b>	<b>143</b>
<b>TOTAL</b>										
Metropolitan	<b>94</b>	<b>50</b>	<b>757</b>	<b>413</b>	<b>4861</b>	<b>2363</b>	<b>15697</b>	<b>7838</b>	<b>21409</b>	<b>10664</b>
Regional	<b>77</b>	<b>45</b>	<b>343</b>	<b>240</b>	<b>639</b>	<b>423</b>	<b>1963</b>	<b>1181</b>	<b>3022</b>	<b>1889</b>
<b>GRAND TOTAL</b>	<b>171</b>	<b>95</b>	<b>1100</b>	<b>653</b>	<b>5500</b>	<b>2786</b>	<b>17660</b>	<b>9019</b>	<b>24431</b>	<b>12553</b>

**Note:** Excludes data for crashes where responsibility not attributed to a road user. For example, responsibility not recorded or unriden animal responsible.

<sup>1</sup> Excludes Buses and other defined special vehicles.



**Table 27: Crashes and Casualties by Vehicle Movement of Motor Vehicle Responsible and Severity (excl. Pedestrian)**

Vehicle Movement of Unit Responsible	Crashes					Casualties				
	Fatal Crashes	Serious Injury Crashes	Minor Injury Crashes	Property Damage Crashes	ALL CRASHES	Lives lost	Serious Injuries	Minor Injuries	ALL CASUALTIES	
Right Turn	7	105	575	1693	2380	7	123	774	904	
Left Turn	0	17	202	547	766	0	17	241	258	
U Turn	0	12	43	195	250	0	13	56	69	
Swerving	1	23	82	417	523	1	25	88	114	
Reversing	1	3	6	95	105	1	4	7	12	
Stopped on Carriageway	0	1	1	5	7	0	1	1	2	
Straight Ahead	77	445	1647	5015	7184	85	532	2082	2699	
Entering Private Driveway	0	8	50	116	174	0	8	56	64	
Leaving Private Driveway	3	21	81	348	453	3	22	93	118	
Parked	1	2	17	24	44	1	2	18	21	
Parking - Angle	1	1	3	12	17	1	1	4	6	
Parking - Parallel	0	2	6	26	34	0	2	6	8	
Unparking - Angle	0	1	1	12	14	0	1	1	2	
Unparking - Parallel	0	4	10	78	92	0	4	10	14	
Overtaking - on Right	2	7	14	83	106	2	9	21	32	
Overtaking - on Left	2	0	5	31	38	2	0	5	7	
Other	0	1	0	5	6	0	1	0	1	
On Pedestrian Crossing	0	0	43	317	360	0	0	49	49	
<b>TOTAL</b>	<b>95</b>	<b>653</b>	<b>2786</b>	<b>9019</b>	<b>12553</b>	<b>103</b>	<b>765</b>	<b>3512</b>	<b>4380</b>	

**Table 28: Crashes and Casualties by Pedestrian Responsible, Movement and Severity**

Pedestrian Movement	Crashes					Casualties				
	Fatal Crashes	Serious Injury Crashes	Minor Injury Crashes	Property Damage Crashes	ALL CRASHES	Lives lost	Serious Injuries	Minor Injuries	ALL CASUALTIES	
On Pedestrian Crossing	0	0	0	3	3	0	0	0	0	
Within 30m of Pedestrian Crossing	0	0	0	0	0	0	0	0	0	
Alighted from Parked Vehicle	1	0	3	3	7	1	0	3	4	
Walked from between Parked Vehicles	1	1	1	0	3	1	1	1	3	
Walking on Road	1	5	11	11	28	1	5	11	17	
Walking on Road - Against the Traffic	0	4	4	1	9	0	4	4	8	
Pushing or Working on Vehicle	1	1	3	1	6	1	1	3	5	
Playing on Roadway	0	1	0	0	1	0	1	0	1	
Crossing without Control	4	22	44	57	127	4	22	48	74	
Other (e.g. Police on Traffic Control)	2	0	0	0	2	2	0	0	2	
Crossing with Traffic Signals	3	1	12	12	28	3	1	14	18	
Walking on Footpath	0	0	0	0	0	0	0	0	0	
<b>TOTAL</b>	<b>13</b>	<b>35</b>	<b>78</b>	<b>88</b>	<b>214</b>	<b>13</b>	<b>35</b>	<b>84</b>	<b>132</b>	

**Note:**  
Excludes data for crashes where responsibility not attributed to a road user. For example, responsibility not recorded or unriden animal responsible.

**Table 29: Crashes by Motor Vehicle Type Involved<sup>1</sup> and Severity**

Type of Vehicle <sup>1</sup>	Fatal Crashes	Serious Injury Crashes	Minor Injury Crashes	Property Damage Crashes	ALL CRASHES
Passenger Vehicle	89	546	2686	9019	12340
Light Truck (≤ 4.5 tonnes)	1	3	10	69	83
Heavy Truck	14	47	127	1350	1538
Bus	2	2	22	321	347
Motorcycles / Scooters	23	190	260	349	822
Bicycles	8	91	311	335	745
Pedestrian	19	62	153	177	411
Other	2	8	15	23	48

**Table 30: Crashes and Casualties by Speed Involvement<sup>2</sup> and Severity**

Speed Involvement <sup>2</sup> and Region	Crashes					Casualties			
	Fatal Crashes	Serious Injury Crashes	Minor Injury Crashes	Property Damage Crashes	ALL CRASHES	Lives lost	Serious Injuries	Minor Injuries	ALL CASUALTIES
<b>METROPOLITAN</b>									
Yes	28	96	230	745	1099	28	117	307	452
No	33	359	2240	7283	9915	33	384	2682	3099
<b>Sub-total</b>	<b>61</b>	<b>455</b>	<b>2470</b>	<b>8028</b>	<b>11014</b>	<b>61</b>	<b>501</b>	<b>2989</b>	<b>3551</b>
<b>REGIONAL</b>									
Yes	11	93	117	260	481	12	114	178	304
No	37	164	323	1047	1571	44	209	477	730
<b>Sub-total</b>	<b>48</b>	<b>257</b>	<b>440</b>	<b>1307</b>	<b>2052</b>	<b>56</b>	<b>323</b>	<b>655</b>	<b>1034</b>
<b>TOTAL</b>	<b>109</b>	<b>712</b>	<b>2910</b>	<b>9335</b>	<b>13066</b>	<b>117</b>	<b>824</b>	<b>3644</b>	<b>4585</b>

<sup>1</sup> The vehicle type categories are not mutually exclusive and must not be added together. It is where the crash has involved at least one of the vehicle types.

Where one crash has involved two or more of the same vehicle type, then it has been counted once.

<sup>2</sup> Speed contribution definition is located under **Definitions & Explanations**.

# Road casualties in 2023

- Road users
- Seatbelts and helmets
- Age and sex distribution
- Alcohol
- Drug
- Licence
- Involvement and responsibility



**ROAD  
SAFETY**



Government of  
South Australia

**Table 31: Casualties by Road User Type, Severity, Age and Sex**

Road User Types	Sex	0-15			16-19			20-24			25-29			30-39			40-49			50-59			60-69			70+			Unknown			ALL CASUALTIES		
		F	SI	MI	F	SI	MI	F	SI	MI	F	SI	MI	F	SI	MI	F	SI	MI	F	SI	MI	F	SI	MI	F	SI	MI	F	SI	MI			
<b>VEHICLE OCCUPANT</b>																																		
Driver <sup>1</sup>	M	0	0	1	2	22	74	3	21	112	4	21	96	6	39	167	3	27	137	5	28	127	5	19	94	5	34	126	0	0	2	33	211	936
	F	0	0	0	1	9	95	2	22	144	4	16	122	3	20	239	3	12	200	2	17	169	0	19	130	5	22	131	0	0	0	20	137	1230
	<b>Sub-total</b>	<b>0</b>	<b>0</b>	<b>1</b>	<b>3</b>	<b>31</b>	<b>169</b>	<b>5</b>	<b>43</b>	<b>256</b>	<b>8</b>	<b>37</b>	<b>218</b>	<b>9</b>	<b>59</b>	<b>406</b>	<b>6</b>	<b>39</b>	<b>337</b>	<b>7</b>	<b>45</b>	<b>296</b>	<b>5</b>	<b>38</b>	<b>224</b>	<b>10</b>	<b>56</b>	<b>257</b>	<b>0</b>	<b>0</b>	<b>4</b>	<b>53</b>	<b>348</b>	<b>2168</b>
Passenger	M	0	10	103	1	7	31	0	3	23	1	7	23	1	4	21	1	6	15	1	5	19	0	4	9	2	4	13	0	0	8	7	50	265
	F	0	4	119	0	8	51	0	9	38	0	6	29	0	12	38	0	3	38	1	6	43	1	6	33	3	12	63	0	0	7	5	66	459
	<b>Sub-total</b>	<b>0</b>	<b>14</b>	<b>222</b>	<b>1</b>	<b>15</b>	<b>83</b>	<b>0</b>	<b>12</b>	<b>61</b>	<b>1</b>	<b>13</b>	<b>53</b>	<b>1</b>	<b>16</b>	<b>59</b>	<b>1</b>	<b>9</b>	<b>53</b>	<b>2</b>	<b>11</b>	<b>62</b>	<b>1</b>	<b>10</b>	<b>42</b>	<b>5</b>	<b>16</b>	<b>76</b>	<b>0</b>	<b>0</b>	<b>16</b>	<b>12</b>	<b>116</b>	<b>727</b>
<b>MOTORCYCLIST</b>																																		
Rider	M	0	1	3	0	16	23	3	18	43	4	22	30	2	28	37	6	25	27	4	30	32	2	27	23	2	9	15	0	2	0	23	178	233
	F	0	0	0	0	0	1	0	4	5	0	2	7	0	0	1	0	2	4	0	1	4	0	0	0	0	0	1	0	0	0	0	9	23
	<b>Sub-total</b>	<b>0</b>	<b>1</b>	<b>3</b>	<b>0</b>	<b>16</b>	<b>24</b>	<b>3</b>	<b>22</b>	<b>48</b>	<b>4</b>	<b>24</b>	<b>37</b>	<b>2</b>	<b>28</b>	<b>38</b>	<b>6</b>	<b>27</b>	<b>31</b>	<b>4</b>	<b>31</b>	<b>36</b>	<b>2</b>	<b>27</b>	<b>23</b>	<b>2</b>	<b>9</b>	<b>16</b>	<b>0</b>	<b>2</b>	<b>0</b>	<b>23</b>	<b>187</b>	<b>256</b>
Pillion Passenger	M	0	4	1	0	0	2	0	0	0	0	0	0	0	0	0	0	0	0	0	0	0	0	0	0	0	0	0	0	1	0	0	5	4
	F	0	0	0	0	0	0	0	0	0	0	0	0	0	1	1	0	1	0	0	2	0	0	2	3	0	1	0	0	0	0	0	7	4
	<b>Sub-total</b>	<b>0</b>	<b>4</b>	<b>1</b>	<b>0</b>	<b>0</b>	<b>2</b>	<b>0</b>	<b>0</b>	<b>0</b>	<b>0</b>	<b>0</b>	<b>0</b>	<b>1</b>	<b>0</b>	<b>1</b>	<b>0</b>	<b>1</b>	<b>0</b>	<b>0</b>	<b>2</b>	<b>0</b>	<b>0</b>	<b>2</b>	<b>3</b>	<b>0</b>	<b>1</b>	<b>0</b>	<b>0</b>	<b>1</b>	<b>0</b>	<b>0</b>	<b>12</b>	<b>8</b>
<b>PEDESTRIAN</b>																																		
PEDESTRIAN	M	0	3	15	1	4	6	0	0	5	2	2	4	2	3	10	0	4	8	1	4	1	4	4	6	2	7	16	0	2	0	12	33	71
	F	0	2	10	0	1	11	0	1	7	0	2	4	1	4	12	2	3	8	1	7	7	1	2	11	2	9	16	0	0	0	7	31	86
	<b>Sub-total</b>	<b>0</b>	<b>5</b>	<b>25</b>	<b>1</b>	<b>5</b>	<b>17</b>	<b>0</b>	<b>1</b>	<b>12</b>	<b>2</b>	<b>4</b>	<b>8</b>	<b>3</b>	<b>7</b>	<b>22</b>	<b>2</b>	<b>7</b>	<b>16</b>	<b>2</b>	<b>11</b>	<b>8</b>	<b>5</b>	<b>6</b>	<b>17</b>	<b>4</b>	<b>16</b>	<b>32</b>	<b>0</b>	<b>2</b>	<b>0</b>	<b>19</b>	<b>64</b>	<b>157</b>
<b>BICYCLIST</b>																																		
BICYCLIST	M	0	4	25	0	0	13	0	0	11	0	0	15	0	9	34	2	18	44	2	23	49	2	14	37	2	5	19	0	1	0	8	74	247
	F	0	0	1	0	1	0	0	0	6	0	0	10	0	4	18	0	7	10	0	2	10	0	1	8	0	0	1	0	0	0	0	15	64
	<b>Sub-total</b>	<b>0</b>	<b>4</b>	<b>26</b>	<b>0</b>	<b>1</b>	<b>13</b>	<b>0</b>	<b>0</b>	<b>17</b>	<b>0</b>	<b>0</b>	<b>25</b>	<b>0</b>	<b>13</b>	<b>52</b>	<b>2</b>	<b>25</b>	<b>54</b>	<b>2</b>	<b>25</b>	<b>59</b>	<b>2</b>	<b>15</b>	<b>45</b>	<b>2</b>	<b>5</b>	<b>20</b>	<b>0</b>	<b>1</b>	<b>1</b>	<b>8</b>	<b>89</b>	<b>312</b>
<b>OTHER ROAD USER</b>																																		
OTHER ROAD USER	M	0	0	0	0	0	0	0	1	0	0	0	0	0	0	1	4	1	3	0	1	3	0	1	1	0	0	1	0	0	1	2	7	10
	F	0	0	0	0	0	1	0	0	2	0	0	2	0	1	0	0	0	0	0	0	0	0	0	1	0	0	0	0	0	0	0	1	6
	<b>Sub-total</b>	<b>0</b>	<b>0</b>	<b>0</b>	<b>0</b>	<b>0</b>	<b>1</b>	<b>0</b>	<b>1</b>	<b>2</b>	<b>0</b>	<b>0</b>	<b>2</b>	<b>0</b>	<b>2</b>	<b>4</b>	<b>1</b>	<b>3</b>	<b>0</b>	<b>1</b>	<b>1</b>	<b>3</b>	<b>0</b>	<b>1</b>	<b>2</b>	<b>0</b>	<b>0</b>	<b>1</b>	<b>0</b>	<b>0</b>	<b>1</b>	<b>2</b>	<b>8</b>	<b>16</b>
<b>ALL ROAD USERS</b>																																		
ALL ROAD USERS	M	0	22	148	4	49	149	6	42	194	11	52	169	11	83	269	13	80	231	14	90	228	13	68	169	13	59	190	0	6	10	85	551	1757
	F	0	6	130	1	19	158	2	36	200	4	26	172	4	41	309	5	28	260	4	35	233	2	30	185	10	44	212	0	0	7	32	265	1866
	<b>TOTAL</b>	<b>0</b>	<b>28</b>	<b>278</b>	<b>5</b>	<b>68</b>	<b>309</b>	<b>8</b>	<b>79</b>	<b>396</b>	<b>15</b>	<b>78</b>	<b>344</b>	<b>15</b>	<b>126</b>	<b>582</b>	<b>18</b>	<b>111</b>	<b>491</b>	<b>18</b>	<b>126</b>	<b>464</b>	<b>15</b>	<b>99</b>	<b>356</b>	<b>23</b>	<b>103</b>	<b>402</b>	<b>0</b>	<b>6</b>	<b>22</b>	<b>117</b>	<b>824</b>	<b>3644</b>

F - Fatality/Life lost, SI - Serious Injury, MI - Minor Injury

<sup>1</sup> Includes heavy vehicle drivers

**Table 32: Casualties by Unit Type and Severity**

Unit Type	Lives lost	Serious Injuries	Minor Injuries	ALL CASUALTIES
Passenger Vehicle	62	444	2836	3342
Light Truck (≤ 4.5 tonnes)	0	2	3	5
Heavy Vehicle <sup>1</sup>	3	18	42	63
Bus	0	0	14	14
Motorcycle	23	199	264	486
Bicycle	8	89	312	409
Pedestrian	19	64	157	240
Other	2	8	16	26
<b>TOTAL</b>	<b>117</b>	<b>824</b>	<b>3644</b>	<b>4585</b>

**Table 33: Motor Vehicle Casualties by Position in Vehicle and Severity (excl. Bicycles)**

Position in Vehicle	Lives lost	Serious Injuries	Minor Injuries	ALL CASUALTIES
<b>FRONT SEAT PASSENGER</b>				
Driver	54	348	2169	2571
Middle	0	1	4	5
Left	8	70	453	531
<b>REAR SEAT PASSENGER</b>				
Right	3	11	85	99
Middle	0	2	20	22
Left	0	22	116	138
<b>CHILD NURSED</b>				
Front	0	0	0	0
Rear	0	0	0	0
<b>UTILITY/TRUCK</b>				
Rear	0	2	0	2
<b>VAN</b>				
Passenger	0	0	3	3
<b>BUS</b>				
Passenger	1	0	11	12
<b>MOTORCYCLE</b>				
Rider	23	187	256	466
Passenger	0	12	8	20
<b>TOWED VEHICLE</b>				
Occupant	0	4	1	5
<b>UNKNOWN/OTHER</b>				
	1	4	34	39
<b>Sub-total</b>	<b>90</b>	<b>663</b>	<b>3160</b>	<b>3913</b>
<b>TOTAL<sup>2</sup></b>	<b>117</b>	<b>824</b>	<b>3644</b>	<b>4585</b>

<sup>1</sup> Excludes Buses.<sup>2</sup> Includes not applicable unit types.

**Table 34: Casualties by Road User Type, Safety Device and Severity**

Road User Type & Safety Device Use <sup>1</sup>	Lives lost	Serious Injuries	Minor Injuries	ALL CASUALTIES
<b>DRIVER</b>				
Fitted - Worn	35	290	2060	2385
Fitted - Not Worn	11	12	34	57
Fitted - Unknown if Worn	7	45	72	124
Not Fitted	0	1	2	3
Unknown				
<b>Sub-total</b>	<b>53</b>	<b>348</b>	<b>2168</b>	<b>2569</b>
<b>PASSENGER</b>				
Fitted - Worn	10	78	651	739
Fitted - Not Worn	1	11	12	24
Fitted - Unknown if Worn	1	19	33	53
Child Restraint - Worn	0	2	28	30
Child Restraint - Not Worn	0	0	1	1
Not Fitted	0	3	1	4
Not Applicable	0	3	0	3
Unknown	0	0	1	1
<b>Sub-total</b>	<b>12</b>	<b>116</b>	<b>727</b>	<b>855</b>
<b>MOTORCYCLE RIDER/PASSENGER</b>				
Helmet Worn	23	183	246	452
Helmet - Not Worn	0	11	5	16
Unknown	0	5	13	18
<b>Sub-total</b>	<b>23</b>	<b>199</b>	<b>264</b>	<b>486</b>
<b>BICYCLIST RIDER/PASSENGER</b>				
Helmet Worn	8	77	286	371
Helmet - Not Worn	0	3	16	19
Unknown	0	9	10	19
<b>Sub-total</b>	<b>8</b>	<b>89</b>	<b>312</b>	<b>409</b>
<b>ALL CASUALTIES</b>				
Device Worn	76	632	3276	3984
Device Not Worn	12	44	76	132
Unknown/Not Applicable	10	84	135	229
<b>Sub-total</b>	<b>98</b>	<b>760</b>	<b>3487</b>	<b>4345</b>
<b>TOTAL<sup>2</sup></b>	<b>117</b>	<b>824</b>	<b>3644</b>	<b>4585</b>

<sup>1</sup> Police reporting of safety device usage is often not based on direct observation by police officers and may be reliant upon statements by the casualties themselves or other involved parties.

<sup>2</sup> Includes not applicable safety device use/users (pedestrians).

Table 35: Driver and Motorcycle Rider Casualties with BAC

Severity	Sex	Blood Alcohol Concentration						Not Tested/ Unknown	TOTAL
		Negative	0.001- 0.049	0.050- 0.079	0.080- 0.149	0.150- 0.199	.200+		
Minor Injuries	M	698	7	3	21	15	9	417	1170
	F	697	2	1	6	6	1	541	1254
	<b>Sub-total<sup>1</sup></b>	<b>1395</b>	<b>9</b>	<b>4</b>	<b>27</b>	<b>21</b>	<b>10</b>	<b>958</b>	<b>2424</b>
Serious Injuries	M	282	11	4	27	10	7	48	389
	F	118	1	1	5	4	0	17	146
	<b>Sub-total<sup>1</sup></b>	<b>400</b>	<b>12</b>	<b>5</b>	<b>32</b>	<b>14</b>	<b>7</b>	<b>65</b>	<b>535</b>
Lives lost	M	40	5	0	6	1	4	0	56
	F	18	0	0	2	0	0	0	20
	<b>Sub-total<sup>1</sup></b>	<b>58</b>	<b>5</b>	<b>0</b>	<b>8</b>	<b>1</b>	<b>4</b>	<b>0</b>	<b>76</b>
ALL CASUALTIES	M	1020	23	7	54	26	20	465	1615
	F	833	3	2	13	10	1	558	1420
	<b>TOTAL<sup>1</sup></b>	<b>1853</b>	<b>26</b>	<b>9</b>	<b>67</b>	<b>36</b>	<b>21</b>	<b>1023</b>	<b>3035</b>

Table 36: Driver and Motorcycle Rider Casualties with Drugs

Severity	Sex	Drugs					Combination of drugs <sup>2</sup>	Not Tested/ Unknown	TOTAL
		Negative	THC	MDMA	Meth				
Minor Injuries	M	648	52	0	21	9	439	1169	
	F	665	27	1	4	1	555	1253	
	<b>Sub-total<sup>1</sup></b>	<b>1313</b>	<b>79</b>	<b>1</b>	<b>25</b>	<b>10</b>	<b>996</b>	<b>2424</b>	
Serious Injuries	M	260	35	0	25	6	63	389	
	F	109	9	1	2	3	22	146	
	<b>Sub-total<sup>1</sup></b>	<b>369</b>	<b>44</b>	<b>1</b>	<b>27</b>	<b>9</b>	<b>85</b>	<b>535</b>	
Lives lost	M	39	5	0	8	4	0	56	
	F	15	3	0	1	1	0	20	
	<b>Sub-total<sup>1</sup></b>	<b>54</b>	<b>8</b>	<b>0</b>	<b>9</b>	<b>5</b>	<b>0</b>	<b>76</b>	
ALL CASUALTIES	M	947	92	0	54	19	502	1614	
	F	789	39	2	7	5	577	1419	
	<b>TOTAL<sup>1</sup></b>	<b>1736</b>	<b>131</b>	<b>2</b>	<b>61</b>	<b>24</b>	<b>1081</b>	<b>3035</b>	

<sup>1</sup> Unknown sex included.<sup>2</sup> Two or more of THC, MDMA or Meth.

**Table 37a: Road User Involved in & Responsible for Crashes by Age & Sex:  
Fatal Crashes**

Age	Sex	Drivers <sup>1</sup>		Motorcycle Riders		Bicycle Riders		Pedestrians		Other Road Users		ALL ROAD USERS	
		Involved	Responsible	Involved	Responsible	Involved	Responsible	Involved	Responsible	Involved	Responsible	Involved	Responsible
0-15	M	0	0	0	0	0	0	0	0	0	0	0	0
	F	0	0	0	0	0	0	0	0	0	0	0	0
	<b>Sub-total<sup>2</sup></b>	<b>0</b>	<b>0</b>	<b>0</b>	<b>0</b>	<b>0</b>	<b>0</b>	<b>0</b>	<b>0</b>	<b>0</b>	<b>0</b>	<b>0</b>	<b>0</b>
16-19	M	6	5	0	0	0	0	1	0	0	0	7	5
	F	1	0	0	0	0	0	0	0	0	0	1	0
	<b>Sub-total<sup>2</sup></b>	<b>7</b>	<b>5</b>	<b>0</b>	<b>0</b>	<b>0</b>	<b>0</b>	<b>1</b>	<b>0</b>	<b>0</b>	<b>0</b>	<b>8</b>	<b>5</b>
20-24	M	7	5	3	2	0	0	0	0	0	0	10	7
	F	4	2	0	0	0	0	0	0	0	0	4	2
	<b>Sub-total<sup>2</sup></b>	<b>11</b>	<b>7</b>	<b>3</b>	<b>2</b>	<b>0</b>	<b>0</b>	<b>0</b>	<b>0</b>	<b>0</b>	<b>0</b>	<b>14</b>	<b>9</b>
25-29	M	12	9	4	3	0	0	2	1	0	0	18	13
	F	7	4	0	0	0	0	0	0	0	0	7	4
	<b>Sub-total<sup>2</sup></b>	<b>19</b>	<b>13</b>	<b>4</b>	<b>3</b>	<b>0</b>	<b>0</b>	<b>2</b>	<b>1</b>	<b>0</b>	<b>0</b>	<b>25</b>	<b>17</b>
30-39	M	23	11	2	2	0	0	2	2	0	0	27	15
	F	7	4	0	0	0	0	1	1	0	0	8	5
	<b>Sub-total<sup>2</sup></b>	<b>30</b>	<b>15</b>	<b>2</b>	<b>2</b>	<b>0</b>	<b>0</b>	<b>3</b>	<b>3</b>	<b>0</b>	<b>0</b>	<b>35</b>	<b>20</b>
40-49	M	5	3	6	5	2	2	0	0	2	0	15	10
	F	5	3	0	0	0	0	2	2	0	0	7	5
	<b>Sub-total<sup>2</sup></b>	<b>10</b>	<b>6</b>	<b>6</b>	<b>5</b>	<b>2</b>	<b>2</b>	<b>2</b>	<b>2</b>	<b>2</b>	<b>0</b>	<b>22</b>	<b>15</b>
50-59	M	9	5	4	4	2	1	1	1	0	0	16	11
	F	6	1	0	0	0	0	2	0	0	0	8	1
	<b>Sub-total<sup>2</sup></b>	<b>15</b>	<b>6</b>	<b>4</b>	<b>4</b>	<b>2</b>	<b>1</b>	<b>3</b>	<b>1</b>	<b>0</b>	<b>0</b>	<b>24</b>	<b>12</b>
60-69	M	12	7	2	2	1	1	4	3	0	0	19	13
	F	1	0	0	0	0	0	1	1	0	0	2	1
	<b>Sub-total<sup>2</sup></b>	<b>13</b>	<b>7</b>	<b>2</b>	<b>2</b>	<b>1</b>	<b>1</b>	<b>5</b>	<b>4</b>	<b>0</b>	<b>0</b>	<b>21</b>	<b>14</b>
70+	M	13	7	2	1	2	0	2	2	0	0	19	10
	F	6	4	0	0	0	0	2	0	0	0	8	4
	<b>Sub-total<sup>2</sup></b>	<b>19</b>	<b>11</b>	<b>2</b>	<b>1</b>	<b>2</b>	<b>0</b>	<b>4</b>	<b>2</b>	<b>0</b>	<b>0</b>	<b>27</b>	<b>14</b>
Unknown	M	0	0	0	0	0	0	0	0	0	0	0	0
	F	0	0	0	0	0	0	0	0	0	0	0	0
	<b>Sub-total<sup>2</sup></b>	<b>2</b>	<b>1</b>	<b>0</b>	<b>0</b>	<b>0</b>	<b>0</b>	<b>0</b>	<b>0</b>	<b>0</b>	<b>0</b>	<b>2</b>	<b>1</b>
ALL AGES	M	87	52	23	19	7	4	12	9	2	0	131	84
	F	37	18	0	0	0	0	8	4	0	0	45	22
	<b>TOTAL<sup>2</sup></b>	<b>126</b>	<b>71</b>	<b>23</b>	<b>19</b>	<b>7</b>	<b>4</b>	<b>20</b>	<b>13</b>	<b>2</b>	<b>0</b>	<b>178</b>	<b>107</b>

<sup>1</sup> Includes heavy vehicle drivers

<sup>2</sup> Unknown sex included.



**Table 37b: Road User Involved in & Responsible for Crashes by Age & Sex:  
Serious Injury Crashes**

Age	Sex	Drivers <sup>1</sup>		Motorcycle Riders		Bicycle Riders		Pedestrians		Other Road Users		ALL ROAD USERS	
		Involved	Responsible	Involved	Responsible	Involved	Responsible	Involved	Responsible	Involved	Responsible	Involved	Responsible
0-15	M	0	0	2	2	4	3	3	3	0	0	9	8
	F	0	0	0	0	0	0	3	2	0	0	3	2
	<b>Sub-total<sup>2</sup></b>	<b>0</b>	<b>0</b>	<b>2</b>	<b>2</b>	<b>4</b>	<b>3</b>	<b>6</b>	<b>5</b>	<b>0</b>	<b>0</b>	<b>12</b>	<b>10</b>
16-19	M	42	32	17	12	0	0	5	1	0	0	64	45
	F	16	11	0	0	1	1	1	0	0	0	18	12
	<b>Sub-total<sup>2</sup></b>	<b>58</b>	<b>43</b>	<b>17</b>	<b>12</b>	<b>1</b>	<b>1</b>	<b>6</b>	<b>1</b>	<b>0</b>	<b>0</b>	<b>82</b>	<b>57</b>
20-24	M	43	34	19	12	0	0	0	0	0	0	62	46
	F	41	28	4	2	0	0	1	1	0	0	46	31
	<b>Sub-total<sup>2</sup></b>	<b>84</b>	<b>62</b>	<b>23</b>	<b>14</b>	<b>0</b>	<b>0</b>	<b>1</b>	<b>1</b>	<b>0</b>	<b>0</b>	<b>108</b>	<b>77</b>
25-29	M	59	29	23	16	0	0	2	2	0	0	84	47
	F	31	18	2	2	0	0	2	2	0	0	35	22
	<b>Sub-total<sup>2</sup></b>	<b>90</b>	<b>47</b>	<b>25</b>	<b>18</b>	<b>0</b>	<b>0</b>	<b>4</b>	<b>4</b>	<b>0</b>	<b>0</b>	<b>119</b>	<b>69</b>
30-39	M	104	59	28	19	10	5	3	2	0	0	145	85
	F	51	27	0	0	4	2	4	2	0	0	59	31
	<b>Sub-total<sup>2</sup></b>	<b>155</b>	<b>86</b>	<b>28</b>	<b>19</b>	<b>14</b>	<b>7</b>	<b>7</b>	<b>4</b>	<b>0</b>	<b>0</b>	<b>204</b>	<b>116</b>
40-49	M	80	45	26	15	18	9	4	2	0	0	128	71
	F	37	18	2	0	6	2	3	0	0	0	48	20
	<b>Sub-total<sup>2</sup></b>	<b>117</b>	<b>63</b>	<b>28</b>	<b>15</b>	<b>24</b>	<b>11</b>	<b>7</b>	<b>2</b>	<b>0</b>	<b>0</b>	<b>176</b>	<b>91</b>
50-59	M	54	38	32	17	22	12	4	3	0	0	112	70
	F	36	18	1	1	2	1	6	4	0	1	45	25
	<b>Sub-total<sup>2</sup></b>	<b>90</b>	<b>56</b>	<b>33</b>	<b>18</b>	<b>24</b>	<b>13</b>	<b>10</b>	<b>7</b>	<b>0</b>	<b>1</b>	<b>157</b>	<b>95</b>
60-69	M	35	25	30	15	14	7	4	1	0	0	83	48
	F	33	20	0	0	2	1	3	0	0	0	38	21
	<b>Sub-total<sup>2</sup></b>	<b>68</b>	<b>45</b>	<b>30</b>	<b>15</b>	<b>16</b>	<b>8</b>	<b>7</b>	<b>1</b>	<b>0</b>	<b>0</b>	<b>121</b>	<b>69</b>
70+	M	54	39	9	5	3	1	7	5	0	0	73	50
	F	33	18	0	0	0	0	9	3	0	0	42	21
	<b>Sub-total<sup>2</sup></b>	<b>88</b>	<b>58</b>	<b>9</b>	<b>5</b>	<b>3</b>	<b>1</b>	<b>16</b>	<b>8</b>	<b>0</b>	<b>0</b>	<b>116</b>	<b>72</b>
Unknown	M	0	0	2	1	2	2	2	2	0	0	6	5
	F	0	0	0	0	0	0	0	0	0	0	0	0
	<b>Sub-total<sup>2</sup></b>	<b>23</b>	<b>16</b>	<b>2</b>	<b>1</b>	<b>3</b>	<b>2</b>	<b>2</b>	<b>2</b>	<b>0</b>	<b>0</b>	<b>30</b>	<b>21</b>
ALL AGES	M	471	301	188	114	73	39	34	21	0	0	766	475
	F	278	158	9	5	15	7	32	14	0	1	334	185
	<b>TOTAL<sup>2</sup></b>	<b>773</b>	<b>476</b>	<b>197</b>	<b>119</b>	<b>89</b>	<b>46</b>	<b>66</b>	<b>35</b>	<b>0</b>	<b>1</b>	<b>1125</b>	<b>677</b>

<sup>1</sup> Includes heavy vehicle drivers

<sup>2</sup> Unknown sex included.

**Table 37c: Road User Involved in & Responsible for Crashes by Age & Sex:  
Minor Injury Crashes**

Age	Sex	Drivers <sup>1</sup>		Motorcycle Riders		Bicycle Riders		Pedestrians		Other Road Users		ALL ROAD USERS	
		Involved	Responsible	Involved	Responsible	Involved	Responsible	Involved	Responsible	Involved	Responsible	Involved	Responsible
0-15	M	1	1	2	1	25	14	15	11	0	2	43	29
	F	0	0	0	0	1	0	9	6	0	0	10	6
	<b>Sub-total<sup>2</sup></b>	<b>1</b>	<b>1</b>	<b>2</b>	<b>1</b>	<b>26</b>	<b>14</b>	<b>24</b>	<b>17</b>	<b>0</b>	<b>2</b>	<b>53</b>	<b>35</b>
16-19	M	169	119	24	16	13	3	6	5	0	0	212	143
	F	164	102	2	1	0	0	11	6	0	0	177	109
	<b>Sub-total<sup>2</sup></b>	<b>334</b>	<b>222</b>	<b>26</b>	<b>17</b>	<b>13</b>	<b>3</b>	<b>17</b>	<b>11</b>	<b>0</b>	<b>0</b>	<b>390</b>	<b>253</b>
20-24	M	335	226	44	24	11	4	5	2	0	1	395	257
	F	239	127	5	3	6	2	7	1	0	0	257	133
	<b>Sub-total<sup>2</sup></b>	<b>574</b>	<b>353</b>	<b>49</b>	<b>27</b>	<b>17</b>	<b>6</b>	<b>12</b>	<b>3</b>	<b>0</b>	<b>1</b>	<b>652</b>	<b>390</b>
25-29	M	282	172	31	19	15	5	4	3	0	1	332	200
	F	228	110	7	2	10	2	4	4	0	0	249	118
	<b>Sub-total<sup>2</sup></b>	<b>511</b>	<b>282</b>	<b>38</b>	<b>21</b>	<b>25</b>	<b>7</b>	<b>8</b>	<b>7</b>	<b>0</b>	<b>1</b>	<b>582</b>	<b>318</b>
30-39	M	456	236	38	23	34	10	10	8	0	1	538	278
	F	419	186	1	1	18	5	13	7	0	0	451	199
	<b>Sub-total<sup>2</sup></b>	<b>876</b>	<b>423</b>	<b>39</b>	<b>24</b>	<b>52</b>	<b>15</b>	<b>23</b>	<b>15</b>	<b>0</b>	<b>1</b>	<b>990</b>	<b>478</b>
40-49	M	364	176	29	15	44	7	9	5	0	0	446	203
	F	376	150	4	3	10	5	8	3	0	0	398	161
	<b>Sub-total<sup>2</sup></b>	<b>741</b>	<b>327</b>	<b>33</b>	<b>18</b>	<b>54</b>	<b>12</b>	<b>17</b>	<b>8</b>	<b>0</b>	<b>0</b>	<b>845</b>	<b>365</b>
50-59	M	325	144	32	18	50	13	1	0	0	0	408	175
	F	289	113	4	1	10	3	7	3	0	0	310	120
	<b>Sub-total<sup>2</sup></b>	<b>614</b>	<b>257</b>	<b>36</b>	<b>19</b>	<b>60</b>	<b>16</b>	<b>8</b>	<b>3</b>	<b>0</b>	<b>0</b>	<b>718</b>	<b>295</b>
60-69	M	234	128	23	13	36	13	6	2	0	0	299	156
	F	226	110	1	1	8	2	10	2	0	0	245	115
	<b>Sub-total<sup>2</sup></b>	<b>460</b>	<b>238</b>	<b>24</b>	<b>14</b>	<b>44</b>	<b>15</b>	<b>16</b>	<b>4</b>	<b>0</b>	<b>0</b>	<b>544</b>	<b>271</b>
70+	M	243	154	15	11	20	7	17	7	1	0	296	179
	F	208	131	1	1	1	0	17	3	0	0	227	135
	<b>Sub-total<sup>2</sup></b>	<b>451</b>	<b>285</b>	<b>16</b>	<b>12</b>	<b>21</b>	<b>7</b>	<b>34</b>	<b>10</b>	<b>1</b>	<b>0</b>	<b>523</b>	<b>314</b>
Unknown	M	3	1	0	0	0	0	0	0	0	0	3	1
	F	0	0	0	0	0	0	0	0	0	0	0	0
	<b>Sub-total<sup>2</sup></b>	<b>203</b>	<b>137</b>	<b>2</b>	<b>1</b>	<b>2</b>	<b>1</b>	<b>1</b>	<b>0</b>	<b>0</b>	<b>0</b>	<b>208</b>	<b>139</b>
ALL AGES	M	2412	1357	238	140	248	76	73	43	1	5	2972	1621
	F	2149	1029	25	13	64	19	86	35	0	0	2324	1096
	<b>TOTAL<sup>2</sup></b>	<b>4765</b>	<b>2525</b>	<b>265</b>	<b>154</b>	<b>314</b>	<b>96</b>	<b>160</b>	<b>78</b>	<b>1</b>	<b>5</b>	<b>5505</b>	<b>2858</b>

<sup>1</sup> Includes heavy vehicle drivers

<sup>2</sup> Unknown sex included.

**Table 37d: Road User Involved in & Responsible for Crashes by Age & Sex:  
Property Damage Crashes**

Age	Sex	Drivers <sup>1</sup>		Motorcycle Riders		Bicycle Riders		Pedestrians		Other Road Users		ALL ROAD USERS	
		Involved	Responsible	Involved	Responsible	Involved	Responsible	Involved	Responsible	Involved	Responsible	Involved	Responsible
0-15	M	2	2	2	2	25	10	10	4	0	0	39	18
	F	1	1	0	0	1	0	7	1	0	0	9	2
	<b>Sub-total<sup>2</sup></b>	<b>3</b>	<b>3</b>	<b>2</b>	<b>2</b>	<b>26</b>	<b>10</b>	<b>18</b>	<b>5</b>	<b>0</b>	<b>0</b>	<b>49</b>	<b>20</b>
16-19	M	715	523	29	16	8	1	2	0	0	0	754	540
	F	457	302	3	2	2	2	3	1	0	0	465	307
	<b>Sub-total<sup>2</sup></b>	<b>1172</b>	<b>825</b>	<b>32</b>	<b>18</b>	<b>10</b>	<b>3</b>	<b>5</b>	<b>1</b>	<b>0</b>	<b>0</b>	<b>1219</b>	<b>847</b>
20-24	M	1314	839	60	27	9	3	4	4	0	1	1387	874
	F	796	451	4	1	5	1	4	3	0	0	809	456
	<b>Sub-total<sup>2</sup></b>	<b>2111</b>	<b>1291</b>	<b>64</b>	<b>28</b>	<b>14</b>	<b>4</b>	<b>8</b>	<b>7</b>	<b>0</b>	<b>1</b>	<b>2197</b>	<b>1331</b>
25-29	M	1176	661	25	10	20	8	5	3	0	0	1226	682
	F	695	377	2	2	3	0	6	2	0	0	706	381
	<b>Sub-total<sup>2</sup></b>	<b>1871</b>	<b>1038</b>	<b>27</b>	<b>12</b>	<b>23</b>	<b>8</b>	<b>11</b>	<b>5</b>	<b>0</b>	<b>0</b>	<b>1932</b>	<b>1063</b>
30-39	M	1798	936	28	14	34	4	15	7	0	0	1875	961
	F	1166	574	2	1	7	1	8	2	0	0	1183	578
	<b>Sub-total<sup>2</sup></b>	<b>2968</b>	<b>1510</b>	<b>30</b>	<b>15</b>	<b>41</b>	<b>5</b>	<b>23</b>	<b>9</b>	<b>0</b>	<b>0</b>	<b>3062</b>	<b>1539</b>
40-49	M	1371	660	39	13	52	14	4	2	0	0	1466	689
	F	871	368	3	2	8	1	7	1	0	0	889	372
	<b>Sub-total<sup>2</sup></b>	<b>2242</b>	<b>1028</b>	<b>42</b>	<b>15</b>	<b>60</b>	<b>15</b>	<b>11</b>	<b>3</b>	<b>0</b>	<b>0</b>	<b>2355</b>	<b>1061</b>
50-59	M	1225	619	48	21	28	5	12	5	3	0	1316	650
	F	689	271	0	0	4	0	1	1	0	0	694	272
	<b>Sub-total<sup>2</sup></b>	<b>1915</b>	<b>890</b>	<b>48</b>	<b>21</b>	<b>32</b>	<b>5</b>	<b>13</b>	<b>6</b>	<b>3</b>	<b>0</b>	<b>2011</b>	<b>922</b>
60-69	M	899	456	22	11	15	5	10	3	0	0	946	475
	F	512	238	1	0	2	0	7	2	0	0	522	240
	<b>Sub-total<sup>2</sup></b>	<b>1411</b>	<b>694</b>	<b>23</b>	<b>11</b>	<b>17</b>	<b>5</b>	<b>17</b>	<b>5</b>	<b>0</b>	<b>0</b>	<b>1468</b>	<b>715</b>
70+	M	663	403	6	3	6	1	4	1	0	0	679	408
	F	496	293	0	0	0	0	4	1	0	0	500	294
	<b>Sub-total<sup>2</sup></b>	<b>1159</b>	<b>696</b>	<b>6</b>	<b>3</b>	<b>6</b>	<b>1</b>	<b>8</b>	<b>2</b>	<b>0</b>	<b>0</b>	<b>1179</b>	<b>702</b>
Unknown	M	20	15	7	6	9	4	9	7	0	0	45	32
	F	7	4	0	0	2	1	7	6	0	0	16	11
	<b>Sub-total<sup>2</sup></b>	<b>1051</b>	<b>726</b>	<b>62</b>	<b>49</b>	<b>104</b>	<b>49</b>	<b>67</b>	<b>45</b>	<b>1</b>	<b>4</b>	<b>1285</b>	<b>873</b>
ALL AGES	<b>M</b>	<b>9183</b>	<b>5114</b>	<b>266</b>	<b>123</b>	<b>206</b>	<b>55</b>	<b>75</b>	<b>36</b>	<b>3</b>	<b>1</b>	<b>9733</b>	<b>5329</b>
	<b>F</b>	<b>5690</b>	<b>2879</b>	<b>15</b>	<b>8</b>	<b>34</b>	<b>6</b>	<b>54</b>	<b>20</b>	<b>0</b>	<b>0</b>	<b>5793</b>	<b>2913</b>
	<b>TOTAL<sup>2</sup></b>	<b>15903</b>	<b>8701</b>	<b>336</b>	<b>174</b>	<b>333</b>	<b>105</b>	<b>181</b>	<b>88</b>	<b>4</b>	<b>5</b>	<b>16757</b>	<b>9073</b>

<sup>1</sup> Includes heavy vehicle drivers

<sup>2</sup> Unknown sex included.

**Table 37e: Road User Involved in & Responsible for Crashes by Age & Sex:  
All Crashes**

Age	Sex	Drivers <sup>1</sup>		Motorcycle Riders		Bicycle Riders		Pedestrians		Other Road Users		ALL ROAD USERS	
		Involved	Responsible	Involved	Responsible	Involved	Responsible	Involved	Responsible	Involved	Responsible	Involved	Responsible
0-15	M	3	3	6	5	54	27	28	18	0	2	91	55
	F	1	1	0	0	2	0	19	9	0	0	22	10
	<b>Sub-total<sup>2</sup></b>	<b>4</b>	<b>4</b>	<b>6</b>	<b>5</b>	<b>56</b>	<b>27</b>	<b>48</b>	<b>27</b>	<b>0</b>	<b>2</b>	<b>114</b>	<b>65</b>
16-19	M	932	679	70	44	21	4	14	6	0	0	1037	733
	F	638	415	5	3	3	3	15	7	0	0	661	428
	<b>Sub-total<sup>2</sup></b>	<b>1571</b>	<b>1095</b>	<b>75</b>	<b>47</b>	<b>24</b>	<b>7</b>	<b>29</b>	<b>13</b>	<b>0</b>	<b>0</b>	<b>1699</b>	<b>1162</b>
20-24	M	1699	1104	126	65	20	7	9	6	0	2	1854	1184
	F	1080	608	13	6	11	3	12	5	0	0	1116	622
	<b>Sub-total<sup>2</sup></b>	<b>2780</b>	<b>1713</b>	<b>139</b>	<b>71</b>	<b>31</b>	<b>10</b>	<b>21</b>	<b>11</b>	<b>0</b>	<b>2</b>	<b>2971</b>	<b>1807</b>
25-29	M	1529	871	83	48	35	13	13	9	0	1	1660	942
	F	961	509	11	6	13	2	12	8	0	0	997	525
	<b>Sub-total<sup>2</sup></b>	<b>2491</b>	<b>1380</b>	<b>94</b>	<b>54</b>	<b>48</b>	<b>15</b>	<b>25</b>	<b>17</b>	<b>0</b>	<b>1</b>	<b>2658</b>	<b>1467</b>
30-39	M	2381	1242	96	58	78	19	30	19	0	1	2585	1339
	F	1643	791	3	2	29	8	26	12	0	0	1701	813
	<b>Sub-total<sup>2</sup></b>	<b>4029</b>	<b>2034</b>	<b>99</b>	<b>60</b>	<b>107</b>	<b>27</b>	<b>56</b>	<b>31</b>	<b>0</b>	<b>1</b>	<b>4291</b>	<b>2153</b>
40-49	M	1820	884	100	48	116	32	17	9	2	0	2055	973
	F	1289	539	9	5	24	8	20	6	0	0	1342	558
	<b>Sub-total<sup>2</sup></b>	<b>3110</b>	<b>1424</b>	<b>109</b>	<b>53</b>	<b>140</b>	<b>40</b>	<b>37</b>	<b>15</b>	<b>2</b>	<b>0</b>	<b>3398</b>	<b>1532</b>
50-59	M	1613	806	116	60	102	31	18	9	3	0	1852	906
	F	1020	403	5	2	16	4	16	8	0	1	1057	418
	<b>Sub-total<sup>2</sup></b>	<b>2634</b>	<b>1209</b>	<b>121</b>	<b>62</b>	<b>118</b>	<b>35</b>	<b>34</b>	<b>17</b>	<b>3</b>	<b>1</b>	<b>2910</b>	<b>1324</b>
60-69	M	1180	616	77	41	66	26	24	9	0	0	1347	692
	F	772	368	2	1	12	3	21	5	0	0	807	377
	<b>Sub-total<sup>2</sup></b>	<b>1952</b>	<b>984</b>	<b>79</b>	<b>42</b>	<b>78</b>	<b>29</b>	<b>45</b>	<b>14</b>	<b>0</b>	<b>0</b>	<b>2154</b>	<b>1069</b>
70+	M	973	603	32	20	31	9	30	15	1	0	1067	647
	F	743	446	1	1	1	0	32	7	0	0	777	454
	<b>Sub-total<sup>2</sup></b>	<b>1717</b>	<b>1050</b>	<b>33</b>	<b>21</b>	<b>32</b>	<b>9</b>	<b>62</b>	<b>22</b>	<b>1</b>	<b>0</b>	<b>1845</b>	<b>1102</b>
Unknown	M	23	16	9	7	11	6	11	9	0	0	54	38
	F	7	4	0	0	2	1	7	6	0	0	16	11
	<b>Sub-total<sup>2</sup></b>	<b>1279</b>	<b>880</b>	<b>66</b>	<b>51</b>	<b>109</b>	<b>52</b>	<b>70</b>	<b>47</b>	<b>1</b>	<b>4</b>	<b>1525</b>	<b>1034</b>
ALL AGES	M	12153	6824	715	396	534	174	194	109	6	6	13602	7509
	F	8154	4084	49	26	113	32	180	73	0	1	8496	4216
	<b>TOTAL<sup>2</sup></b>	<b>21567</b>	<b>11773</b>	<b>821</b>	<b>466</b>	<b>743</b>	<b>251</b>	<b>427</b>	<b>214</b>	<b>7</b>	<b>11</b>	<b>23565</b>	<b>12715</b>

<sup>1</sup> Includes heavy vehicle drivers

<sup>2</sup> Unknown sex included.

**Table 38: Drivers & Motorcycle Riders Involved in & Responsible for Crashes by Licence Type & Severity**

Licence Type	Fatal Crashes		Serious Injury Crashes		Minor Injury Crashes		Property Damage Crashes		ALL CRASHES	
	Involved	Responsible	Involved	Responsible	Involved	Responsible	Involved	Responsible	Involved	Responsible
Learner's Permit	3	2	35	21	94	58	177	115	309	196
Probationary Licence	0	0	8	8	26	20	89	57	123	85
Full Licence	111	59	715	411	4016	2007	12526	6312	17368	8789
Unlicensed	10	9	62	48	83	59	219	175	374	291
Conditional Licence	0	0	0	0	0	0	0	0	0	0
Provisional 1 Licence	3	2	47	40	206	144	873	637	1129	823
Provisional 2 Licence	12	9	47	26	345	216	1094	690	1498	941
Disqualified Licence	5	5	18	16	20	14	60	57	103	92
Unknown	5	4	38	25	240	161	1201	832	1484	1022
<b>TOTAL</b>	<b>149</b>	<b>90</b>	<b>970</b>	<b>595</b>	<b>5030</b>	<b>2679</b>	<b>16239</b>	<b>8875</b>	<b>22388</b>	<b>12239</b>

**Table 39a: Drivers & Motorcycle Riders Responsible for Crashes by Licence Type and Age: Fatal Crashes**

Age Group	Learner's Permit	Probationary Licence	Full Licence	Unlicensed	Conditional Licence	P1 Licence	P2 Licence	Disqualified	Unknown	TOTAL
0-15	0	0	0	0	0	0	0	0	0	0
16-19	0	0	0	0	0	2	3	0	0	5
20-24	0	0	4	0	0	0	3	2	0	9
25-29	0	0	6	4	0	0	3	1	2	16
30-39	0	0	13	2	0	0	0	1	1	17
40-49	2	0	5	3	0	0	0	1	0	11
50-59	0	0	10	0	0	0	0	0	0	10
60-69	0	0	9	0	0	0	0	0	0	9
70+	0	0	12	0	0	0	0	0	0	12
Unknown	0	0	0	0	0	0	0	0	1	1
<b>TOTAL</b>	<b>2</b>	<b>0</b>	<b>59</b>	<b>9</b>	<b>0</b>	<b>2</b>	<b>9</b>	<b>5</b>	<b>4</b>	<b>90</b>

**Table 39b: Drivers & Motorcycle Riders Responsible for Crashes by Licence Type and Age: Serious Injury Crashes**

Age Group	Learner's Permit	Probationary Licence	Full Licence	Unlicensed	Conditional Licence	P1 Licence	P2 Licence	Disqualified	Unknown	TOTAL
0-15	0	0	0	2	0	0	0	0	0	2
16-19	9	0	0	4	0	32	10	0	0	55
20-24	7	1	44	5	0	5	8	2	4	76
25-29	0	2	46	10	0	2	3	2	0	65
30-39	3	3	76	13	0	1	2	3	4	105
40-49	1	0	64	8	0	0	1	4	0	78
50-59	1	2	61	4	0	0	2	4	0	74
60-69	0	0	59	0	0	0	0	1	0	60
70+	0	0	60	2	0	0	0	0	1	63
Unknown	0	0	1	0	0	0	0	0	16	17
<b>TOTAL</b>	<b>21</b>	<b>8</b>	<b>411</b>	<b>48</b>	<b>0</b>	<b>40</b>	<b>26</b>	<b>16</b>	<b>25</b>	<b>595</b>

**Table 39c: Drivers & Motorcycle Riders Responsible for Crashes by Licence Type and Age: Minor Injury Crashes**

Age Group	Learner's Permit	Probationary Licence	Full Licence	Unlicensed	Conditional Licence	P1 Licence	P2 Licence	Disqualified	Unknown	TOTAL
0-15	0	0	0	2	0	0	0	0	0	2
16-19	24	1	11	1	0	110	89	0	3	239
20-24	16	1	235	7	0	22	83	5	11	380
25-29	9	4	244	9	0	9	20	3	5	303
30-39	8	4	397	17	0	3	15	2	1	447
40-49	1	5	316	12	0	0	6	3	2	345
50-59	0	4	262	5	0	0	3	1	1	276
60-69	0	1	248	3	0	0	0	0	0	252
70+	0	0	293	3	0	0	0	0	1	297
Unknown	0	0	1	0	0	0	0	0	137	138
<b>TOTAL</b>	<b>58</b>	<b>20</b>	<b>2007</b>	<b>59</b>	<b>0</b>	<b>144</b>	<b>216</b>	<b>14</b>	<b>161</b>	<b>2679</b>

**Table 39d: Drivers & Motorcycle Riders Responsible for Crashes by Licence Type and Age:  
Property Damage Crashes**

Age Group	Learner's Permit	Probationary Licence	Full Licence	Unlicensed	Conditional Licence	P1 Licence	P2 Licence	Disqualified	Unknown	TOTAL
0-15	0	0	0	5	0	0	0	0	0	5
16-19	51	2	37	6	0	461	272	4	10	843
20-24	27	11	838	26	0	107	277	8	25	1319
25-29	12	8	861	29	0	41	74	10	15	1050
30-39	15	11	1350	48	0	18	44	22	17	1525
40-49	3	13	971	22	0	6	16	9	3	1043
50-59	5	7	873	18	0	1	3	2	2	911
60-69	2	4	684	5	0	2	2	2	4	705
70+	0	1	684	13	0	0	1	0	0	699
Unknown	0	0	14	3	0	1	1	0	756	775
<b>TOTAL</b>	<b>115</b>	<b>57</b>	<b>6312</b>	<b>175</b>	<b>0</b>	<b>637</b>	<b>690</b>	<b>57</b>	<b>832</b>	<b>8875</b>

**Table 39e: Drivers & Motorcycle Riders Responsible for Crashes by Licence Type and Age:  
All Crashes**

Age Group	Learner's Permit	Probationary Licence	Full Licence	Unlicensed	Conditional Licence	P1 Licence	P2 Licence	Disqualified	Unknown	TOTAL
0-15	0	0	0	9	0	0	0	0	0	9
16-19	84	3	48	11	0	605	374	4	13	1142
20-24	50	13	1121	38	0	134	371	17	40	1784
25-29	21	14	1157	52	0	52	100	16	22	1434
30-39	26	18	1836	80	0	22	61	28	23	2094
40-49	7	18	1356	45	0	6	23	17	5	1477
50-59	6	13	1206	27	0	1	8	7	3	1271
60-69	2	5	1000	8	0	2	2	3	4	1026
70+	0	1	1049	18	0	0	1	0	2	1071
Unknown	0	0	16	3	0	1	1	0	910	931
<b>TOTAL</b>	<b>196</b>	<b>85</b>	<b>8789</b>	<b>291</b>	<b>0</b>	<b>823</b>	<b>941</b>	<b>92</b>	<b>1022</b>	<b>12239</b>

# Reference information for South Australia

- Population
- Licence
- Vehicle information



**ROAD  
SAFETY**



Government of  
South Australia



**Table 40: Estimated Population<sup>1</sup> by Age and Sex**

Age Group	Sex		ALL PERSONS
	Male	Female	
0-15	171502	163102	334604
16-19	44231	41627	85858
20-24	59872	54753	114625
25-29	64119	61505	125624
30-39	125264	126727	251991
40-49	110409	112701	223110
50-59	113214	116708	229922
60-69	106020	113804	219824
70+	121117	145029	266146
<b>TOTAL</b>	<b>915748</b>	<b>935956</b>	<b>1851704</b>

**Table 41: Licence and Permit Holders<sup>2</sup> by Age and Sex**

Age Group	Sex			ALL PERSONS
	Male	Female	Unknown	
16-19	35,219	33,944	148	69311
20-24	50,473	46,686	135	97294
25-29	58,216	53,207	128	111551
30-39	118,263	115,563	198	234024
40-49	107,043	105,538	109	212690
50-59	109,042	107,515	65	216622
60-69	103,403	101,893	38	205334
70+	105,569	99,292	24	204,885
<b>TOTAL</b>	<b>687228</b>	<b>663638</b>	<b>845</b>	<b>1351711</b>

<sup>1</sup> Population as of June 2023. Source: Australian Bureau of Statistics, *Australian Demographic Statistics*, cat.no. 3101.0.

<sup>2</sup> At December 2023. Source: TRUMPS database, Registration & Licensing Section, Department for Infrastructure and Transport.

**Table 42: Motor Vehicle on Register<sup>3</sup> by Vehicle Type**

Type of Vehicle	ALL VEHICLES
Cars & Station Wagons	1,160,930
Utilities	220,698
Panel Vans	42,180
Rigid & Other Trucks	43,993
Articulated Trucks	10,033
Other Commercials <sup>1</sup>	18,793
Buses	4,372
Motorcycles	49,971
Other <sup>2</sup>	48,359
<b>TOTAL</b>	<b>1,599,329</b>

**Table 43: Vehicle Kilometres Travelled<sup>4</sup> (VKT) by Jurisdiction**

Type of Vehicle	TOTAL VKT ('000 000)
New South Wales	68,468
Victoria	61,176
Queensland	54,504
<b>South Australia</b>	<b>16,164</b>
Western Australia	28,484
Tasmania	5,225
Northern Territory	2,164
Australian Capital Territory	3,826
<b>TOTAL</b>	<b>240,011</b>

<sup>1</sup> Includes animal transporter vehicle, drilling rig vehicle, earth moving vehicle, garbage truck, industrial vehicle, mobile crane vehicle, tanker vehicle.

<sup>2</sup> Includes ambulance, armoured vehicle, forklift, land implement vehicle, golf buggy, tractors.

<sup>3</sup> At June 2023. Excludes trailers, caravans, plant and equipment. Source: TRUMPS database, Department for Infrastructure and Transport.

<sup>4</sup> Travel for the year 2022. Source: BITRE, *Road Trauma Australia 2022 Statistical Summary*.