

Land Not Within
a Council
Area (Metro)

Holdfast Bay

- Commercial
 - Community Facilities
 - Environmental Constraint
 - Industrial
 - Miscellaneous
 - Open Space
 - Residential
 - Development Plan
- Zoning
 - Policy Area
 - Precinct
 - Local government boundary
 - Cadastre
 - Coastline / River Murray

Produced by Department of Planning, Transport and Infrastructure
Planning Division
GPO Box 1815 Adelaide SA 5001
www.sa.gov.au
Lambert Conformal Conic
Projection
Compiled 9 June 2020

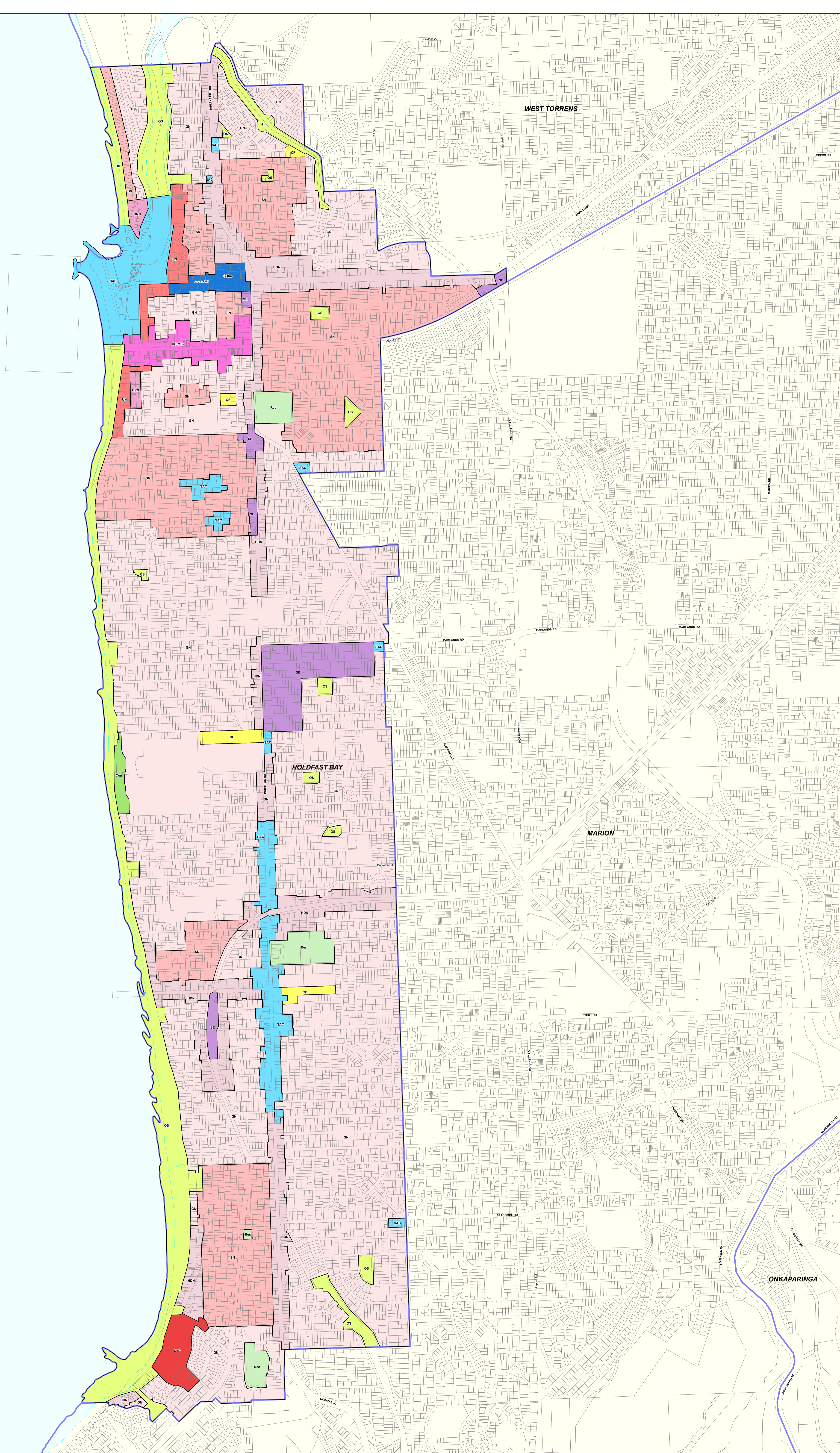
© Government of South Australia 2018
No part of this document may be reproduced, stored in a retrieval system, or transmitted in any form, or by any means, without the prior written permission of the publisher, Department of Planning, Transport and Infrastructure.

While every reasonable effort has been made to ensure that this document is correct at the time of publication, the State of South Australia and its agencies, representatives, employees and contractors disclaim any and all liability to any person in respect to anything or the consequence of anything done or omitted to be done in reliance upon the whole or any part of this document.



Development Plan Map

- Zoning**
 - C - Commercial
 - CP - Caravan and Tourist Park
 - CoCn - Coastal Conservation
 - CoOS - Coastal Open Space
 - Co - Community
 - DCn - District Centre
 - GPP - Glenelg Foreshore and Patawaonga
 - LCn - Local Centre
 - LI - Light Industry
 - MU - Mixed Use
 - NCn - Neighbourhood Centre
 - OS - Open Space
 - R - Residential
 - RC - Residential Character
 - RHD - Residential High Density
- Policy Area**
 - 1 - Recreation
 - 10 - Murray Road
 - 11 - New Glenelg
 - 12 - Seaciff
- 13 - Streetscape Character (Brighton and Glenelg East)
 - 14 - Streetscape Character (Glenelg and Glenelg North)
 - 15 - Urban Glenelg
 - 16 - Brighton and Howe
 - 2 - Glenelg
 - 3 - Central West
 - 4 - Infillish
 - 5 - Medium Density
 - 6 - North West
 - 7 - South West
 - 8 - Central Glenelg Village
 - 9 - On Costa Park
- Precinct**
 - 3 - Three Storey
 - 4 - Five Storey
 - 5 - Twelve Storey



Holdfast Bay

2019 Code Consultation Map

- | | | |
|--|-------------------------------------|---------------------------|
| P&D Code Zones | Urban Neighbourhood | Recreation |
| Infrastructure & Movement Systems | Urban Renewal Neighbourhood | Local government boundary |
| Community Facilities | Productive Economy - Employment | Cadastre |
| People & Neighbourhoods - Residential | Suburban Activity Centre | Coastline HWM |
| Caravan and Tourist Park | Suburban Business and Innovation | |
| General Neighbourhood | Suburban Employment | |
| Housing Diversity Neighbourhood | Resilient Communities & Environment | |
| Suburban Neighbourhood | Conservation | |
| Urban Corridor (Main Street) | Open Space | |

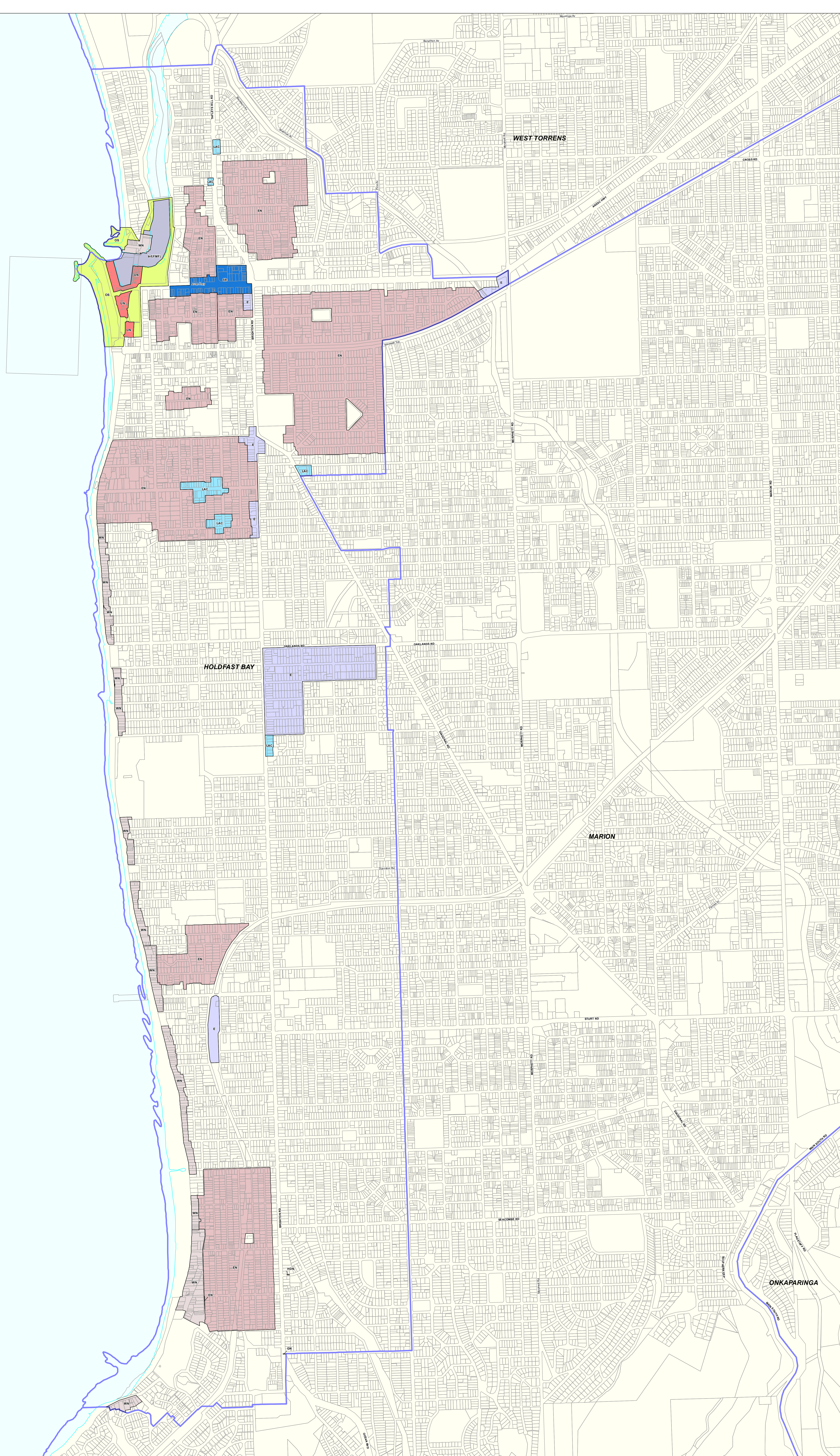
N
 0 220 440 660 metres
 Produced by Department of Planning, Transport and Infrastructure
 Planning and Land Use Services
 GPO Box 1815 Adelaide SA 5001
 www.sa.gov.au
 Lambert Conformal Conic
 Projection
 Compiled 30 September 2019

© Government of South Australia 2019
 No part of this document may be reproduced, stored in a retrieval system, or transmitted in any form or by any means, without the prior written permission of the publisher, Department of Planning, Transport and Infrastructure.
 While every reasonable effort has been made to ensure that this document is correct at the time of publication, the State of South Australia and its agencies, officers, employees and contractors, disclaim any and all liability to any person in respect to anything or the consequences of anything done or omitted to be done in reliance upon the whole or any part of this document.



- P&D Code Zones Abbreviations**
- CF - Community Facilities
 - CTP - Caravan and Tourist Park
 - Con - Conservation
 - GN - General Neighbourhood
 - HDN - Housing Diversity Neighbourhood
 - OS - Open Space
 - Rec - Recreation
 - SAC - Suburban Activity Centre
 - SBIN - Suburban Business and Innovation
 - SE - Suburban Employment
 - SN - Suburban Neighbourhood
 - UC(MS) - Urban Corridor (Main Street)
 - UN - Urban Neighbourhood
 - URN - Urban Renewal Neighbourhood

P&D Code Zones
DRAFT

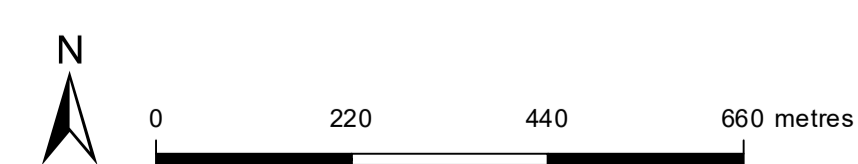


Holdfast Bay

2020 Updated Code Consultation Map

P&D Code Zones DRAFT

- | | |
|-----------------------------------|-------------------------------------|
| Suburban Business | Employment |
| Infrastructure & Movement Systems | Resilient Communities & Environment |
| Open Space | Local government boundary |
| Cadastre | Coastline HWM |
| Established Neighbourhood | |
| General Neighbourhood | |
| Housing Diversity Neighbourhood | |
| Urban Neighbourhood | |
| Waterside Neighbourhood | |
| Local Activity Centre | |



Produced by **Attorney-General's Department**
 Planning and Land Use Services
 GPO Box 1815 Adelaide SA 5001
 www.sa.gov.au
 Lambert Conformal Conic
 4 November 2020

© Government of South Australia 2020
 No part of this document may be reproduced, stored in a retrieval system, or transmitted in any form, or by any means, without the prior written permission of the publisher, the Attorney-General's Department.

While every reasonable effort has been made to ensure that this document is correct at the time of publication, the State of South Australia and its agencies, officers, employees and contractors, disclaim any and all liability to any person in respect to anything or the consequences of anything done or omitted to be done in reliance upon the whole or any part of this document.



PLAN 10 1811

Current Development Plan Zone	Current Development Plan Policy Area	Current Development Plan Precinct	Consultation November 2019 Code Proposal	Consultation November 2020 Code Proposal	Planning & Design Code Subzone
Caravan and Tourist Park			Caravan and Tourist Park	Caravan and Tourist Park	
Coastal Conservation			Conservation	Conservation	
Coastal Open Space			Open Space	Open Space	
Commercial			Suburban Employment	Employment	
Community	Recreation		Recreation	Recreation	
Community			Community Facilities	Community Facilities	
District Centre	Brighton and Hove		Suburban Activity Centre	Suburban Activity Centre	
District Centre	Glenelg		Urban Corridor (Main Street)	Urban Corridor (Main Street)	
Glenelg Foreshore and Patawalonga			Suburban Activity Centre	Zone Split Urban Neighbourhood Infrastructure (Ferry and Marina Facilities) Waterfront Neighbourhood Open Space	
Light Industry			Suburban Employment	Employment	
Local Centre			Suburban Activity Centre	Local Activity Centre	
Mixed Use			Suburban Business and Innovation	Suburban Business	
Neighbourhood Centre			Suburban Activity Centre	Suburban Activity Centre	
Open Space			Open Space	Open Space	
Residential	Central West		Suburban Neighbourhood	Waterfront Neighbourhood	
Residential	Institution		Suburban Neighbourhood	General Neighbourhood	
Residential	Medium Density		Suburban Neighbourhood (Medium Density)	Housing Diversity Neighbourhood	
Residential	North West		Suburban Neighbourhood (Low Density)	Suburban Neighbourhood	
Residential	South West		Suburban Neighbourhood (Medium Density)	Waterfront Neighbourhood	
Residential			Suburban Neighbourhood	General Neighbourhood	

Current Development Plan Zone	Current Development Plan Policy Area	Current Development Plan Precinct	Consultation November 2019 Code Proposal	Consultation November 2020 Code Proposal	Planning & Design Code Subzone
Residential Character	Central Glenelg Village		Suburban Neighbourhood	Established Neighbourhood	
Residential Character	Da Costa Park		Suburban Neighbourhood (Low Density)	Established Neighbourhood	
Residential Character	Maturin Road		Suburban Neighbourhood (Low Density)	Established Neighbourhood	
Residential Character	New Glenelg		Suburban Neighbourhood (Low Density)	Established Neighbourhood	
Residential Character	Seacliff		Suburban Neighbourhood (Low Density)	Established Neighbourhood	
Residential Character	Streetscape Character (Brighton and Glenelg East)		Suburban Neighbourhood (Low Density)	Established Neighbourhood	
Residential Character	Streetscape Character (Glenelg and Glenelg North)		Suburban Neighbourhood (Low Density)	Established Neighbourhood	
Residential High Density	Urban Glenelg	Five Storey	Urban Neighbourhood	Urban Neighbourhood	
Residential High Density	Urban Glenelg	Three Storey	Urban Renewal	Urban Renewal Neighbourhood	
Residential High Density	Urban Glenelg	Twelve Storey	Urban Neighbourhood	Urban Neighbourhood	