

Prospect

- Commercial
- Heritage
- Industrial
- Miscellaneous
- Residential
- Development Plan
- Zoning
- Policy Area
- Local government boundary
- Cadastre

Produced by Department of Planning, Transport and Infrastructure
 Planning Division
 GPO Box 1815 Adelaide SA 5001
 www.sa.gov.au
 Lambert Conformal Conic
 Projection
 Compiled 9 June 2020

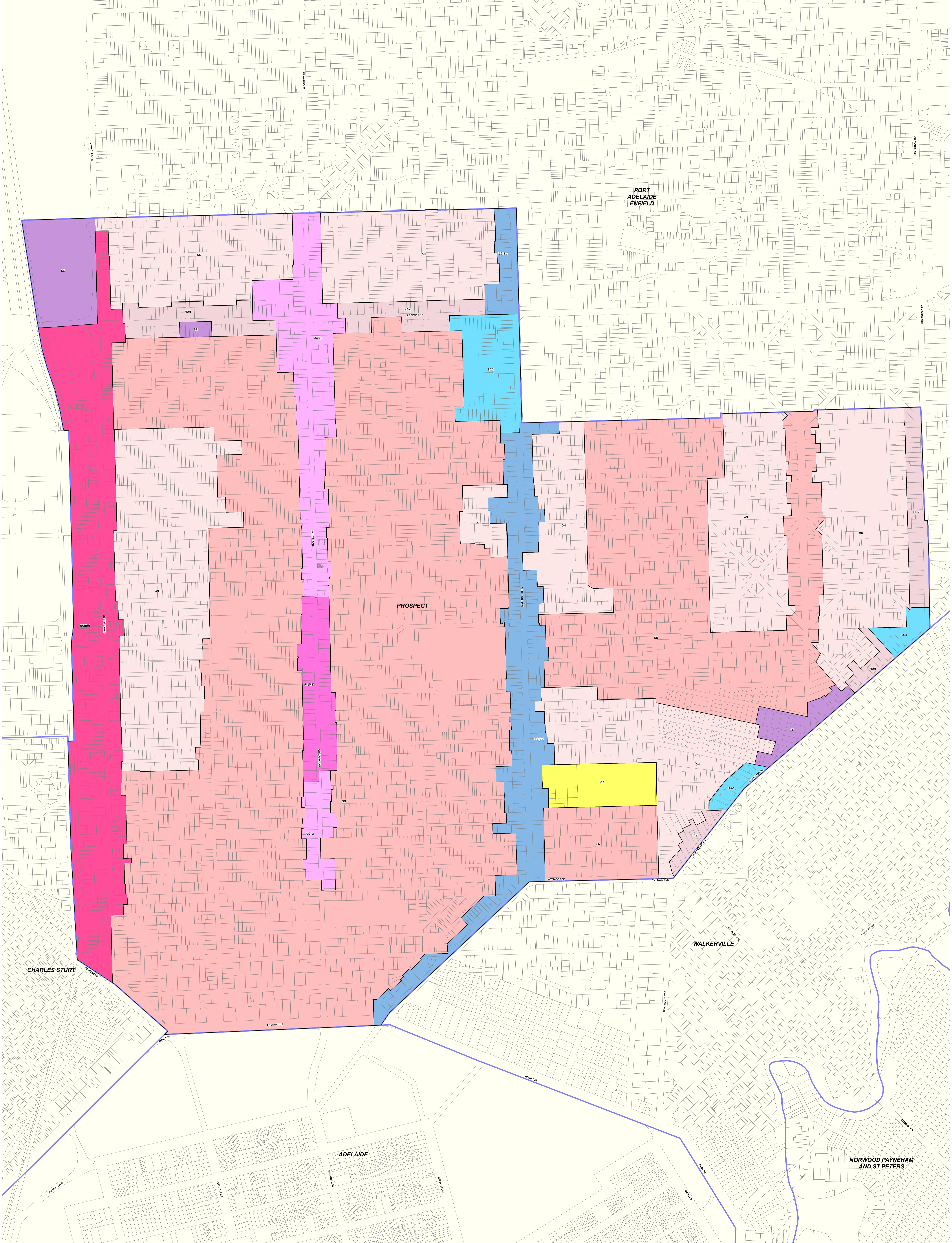
© Government of South Australia 2019
 No part of this document may be reproduced, stored in a retrieval system, or transmitted in any form, or by any means, without the prior written permission of the publisher, Department of Planning, Transport and Infrastructure.

While every reasonable effort has been made to ensure that this document is correct at the time of publication, the State of South Australia and its agencies, instrumentalities, employees and contractors disclaim any and all liability to any person in respect to anything or the consequences of anything done or omitted to be done in reliance upon the whole or any part of this document.



Development Plan Map

- Zoning**
- C - Commercial
 - DC - District Centre
 - LI - Light Industry
 - MU(B) - Mixed Use (Birlington)
 - NC - Neighbourhood Centre
 - R - Residential
 - SU - Special Use
 - UC - Urban Centre
- Policy Area**
- B - Boulevard
 - Bu - Business
 - H - High Street
 - HC1 - Historic Conservation Area 1 Policy Area
 - HC10 - Historic Conservation Area 10 Policy Area
 - HC11 - Historic Conservation Area 11 Policy Area
 - HC2 - Historic Conservation Area 2 Policy Area
 - HC3 - Historic Conservation Area 3 Policy Area
 - HC4 - Historic Conservation Area 4 Policy Area
 - HC5 - Historic Conservation Area 5 Policy Area
 - HC6 - Historic Conservation Area 6 Policy Area
 - HC7 - Historic Conservation Area 7 Policy Area
 - HC8 - Historic Conservation Area 8 Policy Area
 - HC9 - Historic Conservation Area 9 Policy Area
 - NC0 - Colfordwood Policy Area
 - NC03 - Harpstead Policy Area
 - RA350 - Residential Policy Area A350
 - RA450 - Residential Policy Area A450
 - RA500 - Residential Policy Area A500
 - RB200 - Residential Policy Area B200
 - TL - Transit Living



Prospect

P&D Code Zones
DRAFT

- | | |
|---------------------------------|---------------------------|
| Urban Corridor (Main Street) | Urban Corridor (Living) |
| Community Facilities | Suburban Activity Centre |
| Housing Diversity Neighbourhood | Urban Corridor (Business) |
| General Neighbourhood | Suburban Employment |
| Suburban Neighbourhood | Local government boundary |
| Urban Corridor (Boulevard) | Cadastre |
| Urban Corridor (Living) | |

2019 Code Consultation Map

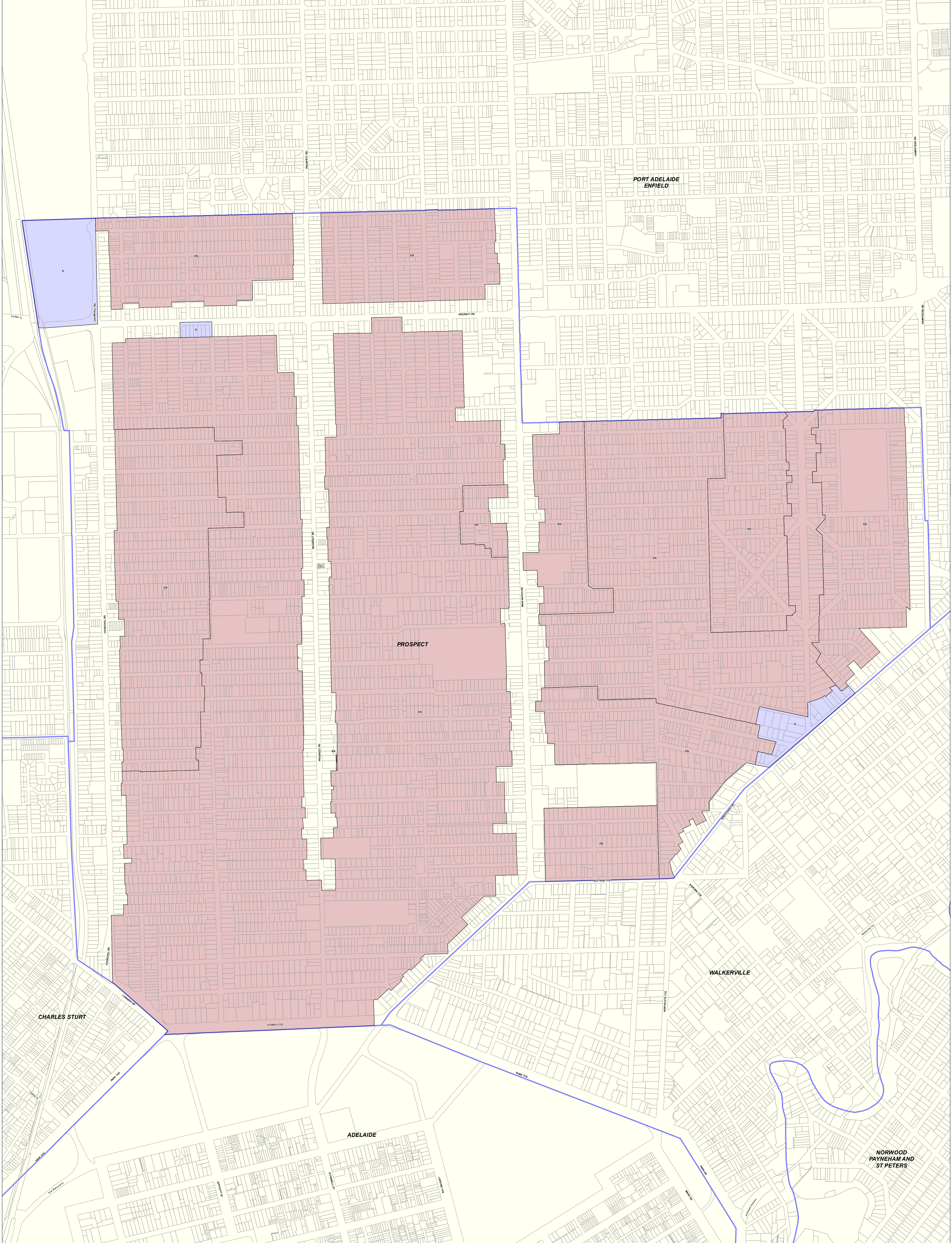
Produced by Department of Planning, Transport and Infrastructure
 Planning and Land Use Services
 GPO Box 1815 Adelaide SA 5001
www.sa.gov.au
 Lambert Conformal Conic
 Projection Compiled 30 September 2019

© Government of South Australia 2019
 No part of this document may be reproduced, stored in a retrieval system, or transmitted in any form or by any means, without the prior written permission of the publisher, Department of Planning, Transport and Infrastructure.

While every reasonable effort has been made to ensure that this document is correct at the time of publication, the State of South Australia and its agencies, employees and contractors, disclaim any and all liability to any person in respect to anything or the consequences of anything done or omitted to be done in reliance upon the whole or any part of this document.



- P&D Code Zones Abbreviations**
- CF - Community Facilities
 - GN - General Neighbourhood
 - HDN - Housing Diversity Neighbourhood
 - SAC - Suburban Activity Centre
 - SE - Suburban Employment
 - SN - Suburban Neighbourhood
 - UC(B) - Urban Corridor (Boulevard)
 - UC(L) - Urban Corridor (Living)
 - UC(M) - Urban Corridor (Main Street)
 - UC(Bu) - Urban Corridor (Business)

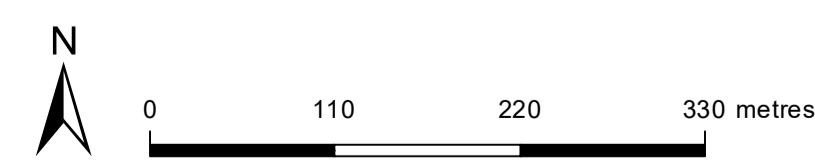


Prospect

2020 Updated Code Consultation Map

- P&D Code Zones**
- People & Neighbourhoods - Residential
 - Established Neighbourhood
 - Productive Economy - Employment
 - Employment
 - Local government boundary
 - Catchment

P&D Code Zones
DRAFT



Produced by Attorney-General's Department
Planning and Land Use Services
GPO Box 1815 Adelaide SA 5001
www.sa.gov.au
Lambert Conformal Conic
4 November 2020

© Government of South Australia 2020
No part of this document may be reproduced, stored in a retrieval system, or transmitted in any form, or by any means, without the prior written permission of the publisher, the Attorney-General's Department.
While every reasonable effort has been made to ensure that this document is correct at the time of publication, the State of South Australia and its agencies, officers and contractors, disclaim any and all liability to any person in respect to any error or the consequences of anything done or omitted to be done in reliance upon the whole or any part of this document.



Current Development Plan Zone	Current Development Plan Policy Area	Current Development Plan Precinct	Consultation November 2019 Code Proposal	Consultation November 2020 Code Proposal	Planning & Design Code Subzone
Commercial			Suburban Employment	Employment	
District Centre			Suburban Activity Centre	Suburban Activity Centre	
Historic Conservation	Fitzroy Terrace Policy Area 1		Suburban Neighbourhood	Established Neighbourhood	
Historic Conservation	Clifton Street Policy Area 2		Suburban Neighbourhood	Established Neighbourhood	
Historic Conservation	Little Adelaide Policy Area 3		Suburban Neighbourhood	Established Neighbourhood	
Historic Conservation	Whinham Street Policy Area 4		Suburban Neighbourhood	Established Neighbourhood	
Historic Conservation	Flora Terrace Policy Area 5		Suburban Neighbourhood	Established Neighbourhood	
Historic Conservation	Martin Avenue Policy Area 6		Suburban Neighbourhood	Established Neighbourhood	
Historic Conservation	North Ovingham Policy Area 7		Suburban Neighbourhood	Established Neighbourhood	
Historic Conservation	Prospect Lanes Policy Area 8		Suburban Neighbourhood	Established Neighbourhood	
Historic Conservation	Highbury Policy Area 9		Suburban Neighbourhood	Established Neighbourhood	
Historic Conservation	Ballville/Gloucestergate Policy Area 10		Suburban Neighbourhood	Established Neighbourhood	
Historic Conservation	Medindie Gardens Policy Area 11		Suburban Neighbourhood	Established Neighbourhood	
Light Industry			Suburban Employment	Employment	
Mixed Use (Islington)			Suburban Employment	Employment	Retail Activity Centre
Neighbourhood Centre	Collinswood Policy Area 2		Suburban Activity Centre	Suburban Activity Centre	
Neighbourhood Centre	Hampstead Policy Area 3		Suburban Activity Centre	Suburban Activity Centre	
Residential	Residential Policy Area A350		General Neighbourhood	Established Neighbourhood	
Residential	Residential Policy Area A450		Suburban Neighbourhood	Established Neighbourhood	
Residential	Residential Policy Area A550		Suburban Neighbourhood	Established Neighbourhood2	
Residential	Residential Policy Area B200		Housing Diversity Neighbourhood	Housing Diversity Neighbourhood	
Special Uses			Community Facilities	Community Facilities	
Urban Corridor	Boulevard		Urban Corridor (Boulevard)	Urban Corridor (Boulevard)	
Urban Corridor	Business		Urban Corridor (Business)	Urban Corridor (Business)	
Urban Corridor	High Street		Urban Corridor (Main Street)	Urban Corridor (Main Street)	
Urban Corridor	Transit Living		Urban Corridor (Living)	Urban Corridor (Living)	