



ROAD CRASHES in South Australia

Statistical Summary of Road Crashes & Casualties in 2019



Government of South Australia
Department for Infrastructure
and Transport

Prepared by Department for Infrastructure and Transport

Only available in electronic format from the Department for Infrastructure and Transport Road Safety website:
<http://dpti.sa.gov.au/towardszerotogether>

Further Information

For further information concerning road crash statistics for South Australia, write to the

Department for Infrastructure and Transport
GPO Box 1533
ADELAIDE SA 5000
Email: DPTI.enquiriesadministrator@sa.gov.au

Full Title: Road Crashes in South Australia: Statistical Summary of Road Crashes & Casualties in 2019

Type of Report and Period Covered: Statistical, 2019

Pages: 63

Key Words: crash, crash rate, casualty, serious injury, injuries, age, blood alcohol concentration, day, hour, fatality, month, road user, severity, sex, vehicle movement, year, statistical

The data presented in this report is for information purposes only and should be used with care before drawing conclusions not contained in this report. Numbers may not match with future publications due to the database continually being updated with new information.

Summary Data for 2019

	Number
CRASHES	
Fatal Crashes	110
Serious Injury Crashes	729
Minor Injury Crashes	3 937
Property Damage Crashes	8 188
TOTAL	12 964
CASUALTIES	
Fatalities	114
Serious Injuries	833
Minor Injuries	5 084
TOTAL	6 031
OTHER DATA	
Vehicles on register¹	1 460 475
Fatalities per 10 000 vehicles	0.78
Serious Injuries per 10 000 vehicles	5.70
Casualties per 10 000 vehicles	41.29
Licence holders²	1 257 624
Driver/rider fatalities per 10 000 licence holders	0.61
Driver/rider serious injuries per 10 000 licence holders	3.32
Driver/rider casualties per 10 000 licence holders	33.52
Population³	1 751 693
Fatalities per 100 000 population	6.51
Serious Injuries per 100 000 population	47.55
Casualties per 100 000 population	344.30

¹ Excludes trailers, caravans, plant and equipment. Source: Registration and Licensing, Department for Infrastructure and Transport, June 2019.

² No. of individual licence holders (inc learner permits). Source: Registration and Licensing, Department for Infrastructure and Transport, June 2019.

³ Estimated resident population. Source: *Australian Demographic Statistics*, ABS, cat. no. 3101.0, June 2019.

Contents

SUMMARY DATA FOR 2019	1
KEY POINTS 2019	4
PREFACE	5
How crashes are processed?	5
Scope	5
Related Publications	5
Acknowledgements	5
Definitions & Explanatory Notes	6
CRASH AND CASUALTY TRENDS	
Table 1 Trends in South Australia, 1995 – 2019	9
Figure 1 Data Trends in South Australia, 1995 – 2019	10
Figure 2 Fatality Rates in South Australia, 1995 – 2019	10
Table 2 Comparison with other Australian States, 2019	11
Table 3 Road Crash Fatalities by Age Group compared with Deaths Registered in South Australia, 2018	11
Table 4 Casualties by Road User Type and Severity, 1995 – 2019	12
Table 5 Casualties by Age Group and Severity, 1995 – 2019	13
Table 6 Casualties by Sex and Severity, 1995 – 2019	14
Table 7 Crashes and Casualties by Region and Severity, 1995 – 2019	15
ROAD CRASHES in 2019	16
Time Distribution of Crashes	
Table 8 Crashes and Casualties during Holiday Periods by Severity	17
Table 9a Casualty Crashes by Time of Day, Day of Week	18
Figure 3 Casualty Crashes by Time of Day, Day of Week	18
Table 9b Casualties by Time of Day, Day of Week	19
Table 9c All Crashes by Time of Day, Day of Week	19
Table 10 Crashes and Casualties by Month of Year and Severity	19
Crash Type	
Table 11a Crashes and Casualties by Crash Type and Severity: <i>Metropolitan Adelaide</i>	20
Table 11b Crashes and Casualties by Crash Type and Severity: <i>Rural</i>	20
Table 11c Crashes and Casualties by Crash Type and Severity: <i>South Australia</i>	21
Table 12 Hit Fixed Object Crashes by Object First Hit and Severity	21
Table 13 Single Vehicle Crashes by Motor Vehicle Type and Severity	21
Figure 4 Definition for Coding Accidents Table	22
Table 14a Crashes and Casualties by DCA and Severity: <i>Metropolitan Adelaide</i>	23
Table 14b Crashes and Casualties by DCA and Severity: <i>Rural</i>	25
Table 14c Crashes and Casualties by DCA and Severity: <i>South Australia</i>	27
Location & Distribution of Crashes	
Table 15a Crashes and Casualties by Location Type and Severity: <i>Metropolitan Adelaide</i>	29
Table 15b Crashes and Casualties by Location Type and Severity: <i>Rural</i>	29
Table 15c Crashes and Casualties by Location Type and Severity: <i>South Australia</i>	30
Table 16a Crashes and Casualties by Traffic Control and Severity: <i>Metropolitan Adelaide</i>	30
Table 16b Crashes and Casualties by Traffic Control and Severity: <i>Rural</i>	31
Table 16c Crashes and Casualties by Traffic Control and Severity: <i>South Australia</i>	31
Table 17 Crashes and Casualties by Area Speed Limit, Region & Severity	32
Table 18 Crashes and Casualties by Light Conditions, Region & Severity	32
Table 19 Crashes and Casualties by Vertical Alignment, Region & Severity	33
Table 20 Crashes and Casualties by Horizontal Alignment, Region & Severity	33
Table 21 Crashes and Casualties by Road Moisture, Region & Severity	34
Table 22 Crashes and Casualties by Route and Severity	34
Table 23a Crashes and Casualties by Local Government Area and Severity: <i>Metropolitan Adelaide: Council Roads</i>	35
Table 23b Crashes and Casualties by Local Government Area and Severity: <i>Metropolitan Adelaide: Departmental Roads</i>	36
Table 23c Crashes and Casualties by Local Government Area and Severity: <i>Metropolitan Adelaide: All Roads</i>	37
Table 24a Crashes and Casualties by Local Government Area and Severity: <i>Rural: Council Roads</i>	38
Table 24b Crashes and Casualties by Local Government Area and Severity: <i>Rural: Departmental Roads</i>	40
Table 24c Crashes and Casualties by Local Government Area and Severity: <i>Rural: All Roads</i>	42
Table 25 Top Intersections with highest number of Casualty Crashes 2019	44

Motor Vehicle Type, Movement & Involvement		
Table 26	Motor Vehicles Involved in and Responsible for Crashes by Region and Severity	45
Table 27	Crashes and Casualties by Vehicle Movement of Motor Vehicle Responsible and Severity	46
Table 28	Crashes and Casualties by Pedestrian Responsible, Movement and Severity	46
Table 29	Crashes by Motor Vehicle Type Involved and Severity	47
Speed Involvement		
Table 30	Crashes and Casualties by Speed Involvement and Severity	47
CASUALTIES in 2019		48
Road User		
Table 31	Casualties by Road User Type, Severity, Age & Sex	49
Table 32	Casualties by Unit Type and Severity	50
Table 33	Motor Vehicle Casualties by Position in Vehicle and Severity	50
Seatbelts & Helmets		
Table 34	Casualties by Road User Type, Safety Device and Severity	51
Alcohol		
Table 35	Driver and Motorcycle Rider Casualties with BAC	52
Drugs		
Table 36	Driver and Motorcycle Rider Casualties with Drugs	52
Responsibility		
Table 37a	Road User Involved in and Responsible for Crashes by Age & Sex: <i>Fatal Crashes</i>	53
Table 37b	Road User Involved in and Responsible for Crashes by Age & Sex: <i>Serious Injury Crashes</i>	54
Table 37c	Road User Involved in and Responsible for Crashes by Age & Sex: <i>Minor Injury Crashes</i>	55
Table 37d	Road User Involved in and Responsible for Crashes by Age & Sex: <i>Property Damage Crashes</i>	56
Table 37e	Road User Involved in and Responsible for Crashes by Age & Sex: <i>All Crashes</i>	57
Table 38	Drivers & Motorcycle Riders Involved in and Responsible for Crashes by Licence Type and Severity	58
Table 39a	Drivers & Motorcycle Riders Responsible for Crashes by Licence Type and Age: <i>Fatal Crashes</i>	58
Table 39b	Drivers & Motorcycle Riders Responsible for Crashes by Licence Type and Age: <i>Serious Injury Crashes</i>	59
Table 39c	Drivers & Motorcycle Riders Responsible for Crashes by Licence Type and Age: <i>Minor Injury Crashes</i>	59
Table 39d	Drivers & Motorcycle Riders Responsible for Crashes by Licence Type and Age: <i>Property Damage Crashes</i>	60
Table 39e	Drivers & Motorcycle Riders Responsible for Crashes by Licence Type and Age: <i>All Crashes</i>	60
REFERENCE INFORMATION for South Australia		61
Demographic Data		
Table 40	Estimated Population by Age and Sex	62
Table 41	Licence and Permit Holders by Age and Sex	62
Vehicle Information		
Table 42	Motor Vehicle on Register by Vehicle Type	63
Table 43	Vehicle Kilometres Travelled by Vehicle Type	63

Key Points 2019

- A total of 12 964 crashes were processed for South Australia in 2019 – 110 fatal crashes, 729 serious injury crashes, 3 937 minor injury crashes and 8 188 property damage crashes. This resulted in 114 fatalities, 833 serious injuries and 5 084 minor injuries.

- The estimated cost of casualty crashes to the community in 2019 was \$1.81 billion¹.

- The 114 fatalities that occurred in 2019 resulted in a fatality rate per 100 000 population of 6.51, above the national average of 4.67.

- **Greater Adelaide Area** – The number of fatal crashes in the Greater Adelaide area increased substantially in 2019 compared to 2018, as did the number of serious injury crashes. There were 49 fatal crashes, this is 25 more than the previous year and around 29% higher than the previous five year average.

There were 504 serious injury crashes in 2019 this is more than the 284 in 2018, and is above the previous five year average of 336. Within Greater Adelaide 20% of fatal crashes were at intersections, down from 29% in 2018.

- **Rural areas** – Fatal crashes have increased in rural areas in 2019 compared to 2018. There were 61 fatal crashes in rural areas in 2019, 10 more than 2018 and also 12 more than the previous five year average.

Serious injury crashes also increased from 201 in 2018 to 225 in 2019 (five year average of 232).

In rural areas 46% of fatal crashes were single vehicle crashes, such as a vehicle rolling over or hitting objects such as trees. This is a substantial decrease from 59% in 2018.

- **Young road users** – The number of 16-19 year old fatalities decreased by one from 10 in 2018 to nine in 2019, the previous five year average was seven fatalities. The number of deaths in the 20-24 year old range increased from seven in 2018 to 12 in 2019, the previous five year average was 10 fatalities.

The number of 16-24 year olds seriously injured increased from 111 in 2018 to 158 in 2019, it is also above the five year average of 140 for 16-24 year olds seriously injured.

- **Older road users** – The number of fatalities of people aged 70 or over increased significantly in 2019, 29 people in this age group were killed compared to 15 in 2018 and a five year average of 22 fatalities.

Serious injuries also increased from 83 in 2018 to 109 in 2019, the previous five year average is also 83 serious injuries for this age group.

- **Drivers/passengers** – Driver (including heavy vehicle driver) fatalities increased from 41 in 2018 to 60 in 2019. Passenger fatalities decreased from 16 in 2018 to nine in 2019 and also remained below the five year average of 18 deaths.

Driver (including heavy vehicle driver) serious injuries increased from 277 in 2018 to 349 in 2019. Passenger serious injuries also increased from 87 in 2018 to 108 in 2019 but is below the five year average of 123.

- **Motorcyclists** – Fatalities increased from 10 in 2018 to 17 in 2019. The five year average of motorcyclists killed is 13.

Serious injuries almost doubled from 103 in 2018 to 201 in 2019, also above the previous five year average of 119 serious injuries.

- **Pedestrians** – Fatalities increased substantially from six in 2018 to 21 in 2019. This number is also above the average of 13 deaths over the previous five years.

Serious injuries also increased for pedestrians. In 2019, 80 pedestrians were seriously injured compared to 58 in 2018, it is also above the five year average of 55 pedestrians seriously injured.

- **Cyclists** – The number of cyclists killed in 2019 was the same as 2018 with seven cyclists killed in both years. The five year average of cyclists killed is four per year.

The number of cyclists seriously injured has risen from 51 in 2018 to 94 in 2019. The previous five year average of cyclists seriously injured was 56.

- **Seatbelts** – 27% of driver and passenger fatalities in 2019 were not wearing a seatbelt at the time of the crash. A significant increase compared to 16% in 2018 and slightly above the previous five year average of 25%.

¹ Calculated using *Willingness to Pay* method

Preface

This publication presents information compiled from police reported crashes in South Australia for 2019 and is the fifty second edition in an annual series that commenced with 1967 data.

How crashes are reported and processed?

When a reportable road crash occurs, South Australia Police (SAPOL) collect the data through vehicle crash reports, which are entered into SAPOL's SHIELD system. The reports are then electronically forwarded to the Road Safety section of the Department for Infrastructure and Transport for further processing and geocoding. The information is checked for accuracy and consistency to ensure the reliability of any published statistics. Processed crash data is stored in the Departmental 'Road Crash Database' (TARS).

Serious injury data reflects on-going improvements made by SAPOL to its data collection methods. Historically, the decision to report a road crash casualty as being 'admitted to hospital' was sometimes made by the police at the scene of the crash when a person was taken away by ambulance. From 2008, SAPOL officers started to verify whether injured persons were formally admitted to hospital rather than just being treated as a casualty at hospital and released. This improved classification of seriously injured casualties was utilised in an increasing proportion of collision reports until complete coverage occurred in 2012.

The data presented in this report is for information purposes only and should be used with care before drawing conclusions not contained in this report. Details in this publication may differ from information previously released or published due to the database continually being updated with new information. Road crash information contained in this publication is derived from TARS. Please note, data reported within this publication is correct at the time of extraction. Due to continual quality assurances and process updates historical data may not match previous publications.

Scope

Note: The following changes were made to the Property Damage Only (PDO) definition in 2003, 2013, 2016 and 2017:

1 January 2017

The Department for Infrastructure and Transport processed all casualty crashes and only 'property damage' crashes involving any type of vehicle towed away from the crash or where involving:

- a motorcycle (includes quad bikes), motor scooter, motorised bicycle and regular bicycle, regardless of whether another vehicle was involved,
- any type of heavy vehicle with a GVML > 4.5 tonnes or a bus with 13 seats or more,
- a train or tram colliding with a vehicle or pedestrian within the road related area,
- any type of vehicle colliding with a pedestrian.

1 December 2016

The Department processed all 'property damage' crashes for the month of December 2016 in accordance with the Australian Transport Safety Bureau (ATSB) guidelines.

Prior to 1 December 2016, the crash statistics included in this publication were confined to those crashes which:

- were reported to SA Police (SAPOL) (excludes SAPOL online crash reporting);
- occurred on a road, defined in the Road Traffic Act 1961;
- were defined by the ATSB publication "Guidelines For Determining Events as Road Crashes in Australia" (published March 2000);
- involved at least one moving vehicle;
- involved at least one person being killed or injured, vehicle towed away, or total property damage of \$5000 or greater; and
- included all crashes involving bicycles, motorcycles and scooters (irrespective of damage value or injury level).

1 January 2013

The Department only processed 'property damage' crashes with an aggregated damage value of \$5000 or greater, or where a vehicle was towed away.

1 July 2003

The Department only processed 'property damage' crashes where the value was \$3000, or where a vehicle was towed away. Preceding this, the 'property damage' crash value was \$1000 introduced on 1 January 1998.

Related Publications

All monthly and annual statistical reports are available from the Departments Road Safety website

https://towardszerotogether.sa.gov.au/road_crash_facts

Acknowledgements

Acknowledgement is extended to the South Australia Police for the supply of reported road crash reports.

Notes

From 1 January 2013, new ABS boundaries were introduced into the coding corresponding to the Greater Adelaide City Statistical Area, replacing the previous metro/rural boundaries. As a consequence, Mt Barker and Adelaide Hills Council, part of Adelaide Plains Council, Barossa and Light Councils are now incorporated into Metropolitan Adelaide.

Definitions & Explanatory Notes

BAC	Blood Alcohol Concentration (mg/100mL).
Bicycle	Any two or three wheeled device operated by pedals and propelled by human power. Includes motorised bicycles.
Bicycle Rider	A person occupying the controlling position of a bicycle.
Bicyclist	A bicycle rider or passenger, often referred to as a cyclist.
Driver	A controller of a motor vehicle other than a motorcycle or bicycle.
Drug	Methamphetamine, MDMA (Ecstasy) and/or THC (cannabis).
Casualty	Any person killed or injured as a result of a crash.
Casualty Crash	Crash where someone has been killed or injured as a result of the crash.
DCA	Definition for Coding Accidents – a coding system to describe the events involved in a crash. The ‘crash-type’ is based on the traffic movements leading up to the crash. Participant intent, as well as actual movement, is used in determining the DCA crash type.
Fatal Crash	A crash for which there is at least one fatality.
Fatality	A person who dies within 30 days of a crash as a result of injuries sustained in that crash.
Heavy Vehicle	Heavy vehicle includes the following vehicle types: Rigid truck, Semi-Trailer, Bus, B Double and other defined special vehicle.
Intersection Crash	A crash for which the first impact occurs at or within a 20 metre radius of an intersection.
Metropolitan	Greater Adelaide City Statistical Area. Comprises of the following Local Government Areas: Adelaide, Burnside, Campbelltown, Charles Sturt, Holdfast Bay, Marion, Mitcham, Norwood Payneham & St Peters, Onkaparinga, Playford, Port Adelaide & Enfield, Prospect, Salisbury, Tea Tree Gully, Unley, Walkerville, West Torrens, Adelaide Hills, Mount Barker, Gawler and part of Barossa, Light and Adelaide Plains councils.
Mid-block Crash	A crash that occurs between two intersections.
Minor Injury	A person who sustains injuries requiring medical treatment, either by a doctor or in a hospital, as a result of a road crash, who was not admitted to hospital and who does not die as a result of those injuries within 30 days of the crash.
Minor Injury Crash	A crash in which at least one person sustains injury but no person is seriously injured or dies within 30 days of the crash.
Motor Vehicle	Any road vehicle which is mechanically or electrically powered but not operated on rails.
Motorcycle	Any mechanically or electrically propelled two or three wheeled vehicle with or without side-car; includes solo motorcycle, motorcycle with sidecar, motor scooter, mini-bike, and quad bikes.
Motorcycle Rider	A person occupying the controlling portion of a motorcycle.
Motorcyclist	Motorcycle rider or pillion passenger.
Other Road User	Occupants/controllers of animal drawn vehicles, ridden animals, railway vehicles, tram, and other defined special vehicle.
Other Vehicle Type	Animal drawn vehicles, ridden animals, railway vehicles, and tram.
Passenger	Any person, other than the controller, who is in, on, or falling from a road vehicle at the time of the crash, provided a portion of the person is in/on the road vehicle. It does not include those that are boarding or alighting a road vehicle at the time of the crash.
Passenger Vehicle	Includes all cars and car derivatives including 4WDs, vans, utilities and station wagons. Excludes heavy vehicles, light trucks (≤ 4.5 tonnes), motorcycles and bicycles.

Pedestrian	Any person who is standing, walking, playing, lying on the road or alighting or boarding a road vehicle at the time of the crash. It does not include those that have fallen from a vehicle. Also includes riders and passengers of motorised wheelchairs/wheelchairs, small wheeled vehicles and gopher users.
Pillion Passenger	A passenger on but not controlling a motorcycle.
Property Damage Crash	A crash resulting in property damage in excess of the prescribed amount in which no person is injured or dies within 30 days of the crash.
Road Crash	Any apparent unpremeditated event reported to the police and resulting in death, injury or property damage in excess of the prescribed amount, and attributed to the movement of the road vehicle on a road.
Road User	Any person who is a pedestrian, rider, or the occupant of a road vehicle.
Rural	Area outside of metropolitan Adelaide. Comprises of the following local government areas: Ceduna, Cleve, Elliston, Franklin Harbor, Kimba, Lower Eyre Peninsula, Port Lincoln, Streaky Bay, Tumby Bay, Whyalla, Cooper Pedy, Finders Ranges, Port Augusta, Roxby Downs, Alexandrina, Kangaroo Island, Victor Harbor, Yankalilla, Grant, Mount Gambier, Naracoorte Lucindale, Robe, Tatiara, Wattle Range, Berri & Barmera, Karoonda East Murray, Loxton Waikerie, Mid Murray, Murray Bridge, Renmark Paringa, Southern Mallee, The Coorong, Barunga West, Clare & Gilbert Valleys, Copper Coast, Goyder, Mount Remarkable, Northern Areas, Orroroo/Carrieton, Peterborough, Port Pirie, Wakefield, Yorke Peninsula and part of Barossa, Light and Adelaide Plains councils.
Serious Casualty	A fatality or serious injury.
Serious Injury	A person who sustains injuries and is admitted to hospital for a minimum period of an overnight stay as a result of a road crash and who does not die as a result of those injuries within 30 days of the crash.
Serious Injury Crash	A non-fatal crash in which at least one person is seriously injured.
Vehicle Occupant	Driver or passenger within a motor vehicle.

Speed definition

Based on NSW Roads and Traffic Authority criteria for determining whether or not a crash is to be considered as having involved speed as a contributing factor. A motor vehicle is assessed as having been speeding if it satisfies the conditions described below:

- a) The vehicle's controller (driver or rider) was charged with a speeding offence; or the vehicle was described by police as travelling at excessive speed; or the stated speed of the vehicle was in excess of the speed limit; or the vehicle weight or the speed of the vehicle was faster than that allowed for the licence class of the driver or rider, or the vehicle weight, OR
- b) The vehicle was performing a manoeuvre characteristic of excessive speed, that is:
 - while on a curve the vehicle jack-knifed, skidded, slid or the controller lost control; or
 - the vehicle ran off the road while negotiating a bend or turning a corner and the controller was not distracted by something or disadvantaged by drowsiness or sudden illness; and was not swerving to avoid another vehicle, animal or object and the vehicle did not suffer equipment failure.

CRASH & CASUALTY TRENDS

Historical Data
Fatality Rates
Interstate and International Comparisons
Causes of Death
Road User Type
Age & Sex
Region

Table 1: Trends in South Australia, 1995 – 2019

Year	Crashes						Casualties					Vehicles on Register ¹ ('000)	Licence Holders ² ('000)	Population ³ ('000)	Vehicle Kilometres Travelled ⁴ ('000 000)	Fatalities per		
	Fatal Crashes	Serious Injury Crashes	Minor Injury Crashes	TOTAL Casualty Crashes	Property Damage Crashes	ALL Crashes	Fatalities	Serious Injuries	Minor Injuries	ALL Casualties	10, 000 Vehicles					10,000 Licence Holders ⁵	100,000 Population	100, (M) Vehicle Kilometres Travelled
1995	164	1185	5097	6446	32844	39290	182	1521	6638	8341	945	975	1469	13195	1.93	0.98	12.39	1.38
1996	162	1324	5023	6509	32432	38941	181	1720	6775	8676	959	979	1474	-	1.89	1.09	12.28	-
1997	124	1168	5138	6430	32442	38872	149	1509	6716	8374	969	995	1479	-	1.54	0.80	10.07	-
1998	152	1225	5551	6928	32664	39592	168	1566	7345	9079	995	995	1487	13974	1.69	0.85	11.30	1.20
1999	132	1238	6047	7417	34287	41704	153	1607	8071	9831	1010	1012	1493	13081	1.52	0.85	10.25	1.17
2000	151	1229	6433	7813	33172	40985	166	1627	8501	10294	1011	1025	1498	13153	1.64	1.04	11.08	1.26
2001	137	1245	6351	7733	33041	40774	154	1603	8497	10254	1023	1045	1502	15085	1.51	0.85	10.25	1.02
2002	138	1199	6249	7586	32525	40111	154	1538	8382	10074	1045	1047	1522	14855	1.47	0.88	10.12	1.04
2003	135	1169	5786	7090	23220	30310	156	1470	7597	9223	1034	1052	1527	14963	1.51	0.85	10.21	1.04
2004	128	1071	5521	6720	15548	22268	139	1331	7297	8767	1049	1072	1534	15241	1.32	0.93	9.06	0.91
2005	126	994	5106	6226	14945	21171	147	1296	6629	8072	1065	1094	1542	14533	1.38	0.84	9.53	1.01
2006	104	1092	5009	6205	14513	20718	117	1358	6489	7964	1085	1042	1555	15535	1.08	0.77	7.53	0.75
2007	108	1090	5295	6493	15230	21723	125	1368	6961	8454	1107	1073	1585	14212	1.13	0.62	7.89	0.88
2008	87	996	5615	6698	15223	21921	99	1217	7174	8490	1171	1094	1602	-	0.85	0.56	6.18	-
2009	104	908	5213	6225	15506	21731	119	1108	6618	7845	1201	1135	1623	-	0.99	0.65	7.33	-
2010	105	886	5424	6415	15877	22292	118	1050	6907	8075	1226	1136	1645	14615	0.96	0.64	7.17	0.81
2011	95	781	5471	6347	16970	23317	103	932	6896	7931	1265	1141	1657	-	0.81	0.53	6.22	-
2012	86	637	5377	6100	16729	22829	94	761	6624	7479	1285	1155	1655	16313	0.73	0.56	5.68	0.58
2013	89	666	5037	5792	10883	16675	97	790	6290	7177	1305	1186	1671	-	0.74	0.51	5.80	-
2014	96	594	5005	5695	10467	16162	108	711	6163	6982	1322	1196	1686	16715	0.82	0.53	6.41	0.65
2015	96	657	4616	5369	10063	15432	102	759	5800	6661	1349	1204	1699	-	0.76	0.52	6.00	-
2016	77	574	4562	5213	11562	16775	86	692	5787	6565	1419	1225	1708	16915	0.61	0.51	5.03	0.51
2017	93	533	4374	5000	8237	13237	100	622	5515	6237	1442	1238	1723	-	0.69	0.57	5.80	-
2018	75	485	4393	4953	8646	13599	80	576	5468	6124	1443	1245	1736	17817	0.55	0.41	4.61	0.45
2019	110	729	3937	4776	8188	12964	114	833	5084	6031	1460	1257	1751	-	0.78	0.61	6.51	-

¹ At June 2019. Excludes tractors, trailers, caravans, plant and equipment. Source: TRUMPS database, Registration & Licensing Section, Departmental for Infrastructure and Transport

² At June 2019. Source: TRUMPS database, Registration & Licensing Section, Departmental for Infrastructure and Transport

³ Population as of June 2019. Source: Australian Bureau of Statistics, *Australian Demographic Statistics*, cat.no. 3101.0.

⁴ Travel for the year ended June 2018. Source: Australian Bureau of Statistics, *Survey of Motor Vehicle Use*, cat. no. 9208.0.

⁵ Licence holder fatality rates are based on driver and rider fatalities only.

Note:

Changes were made to the Property Damage Only (PDO) definition in 1998, 2003, 2013, 2016 and 2017. Refer to **Scope**, page 5 for full details.

Figure 1: Data Trends in South Australia, 1995 - 2019

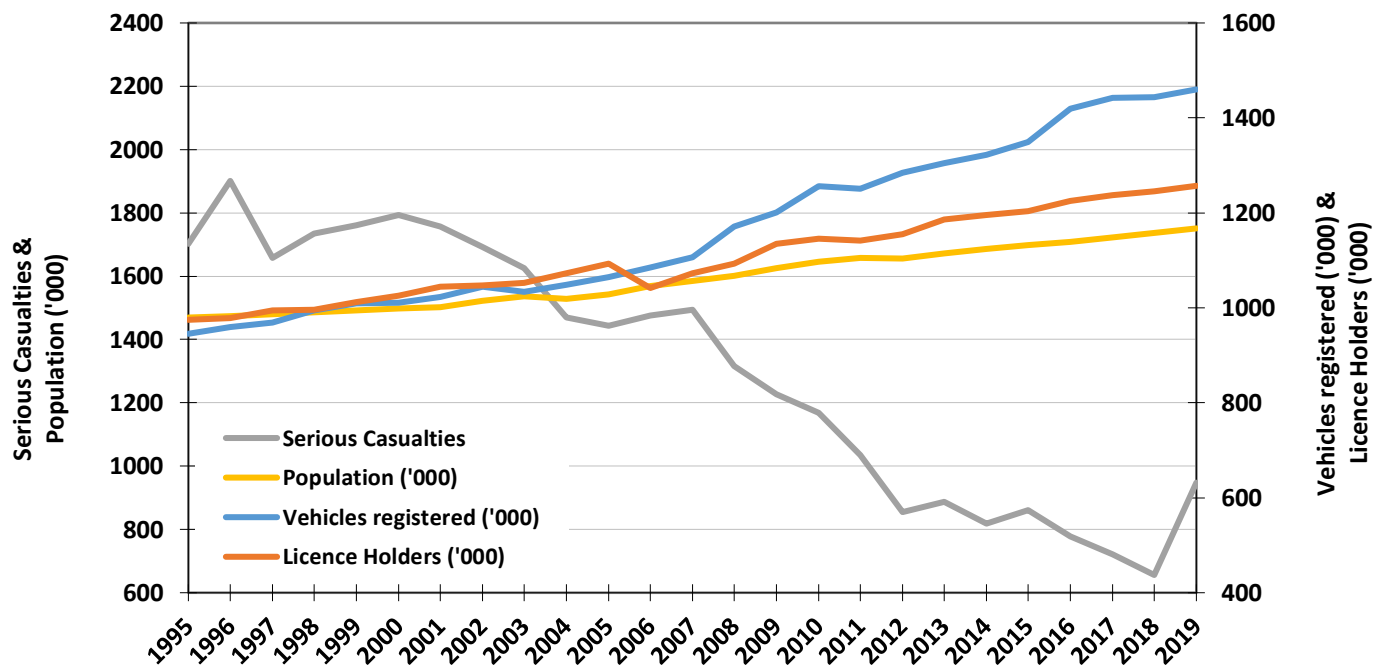
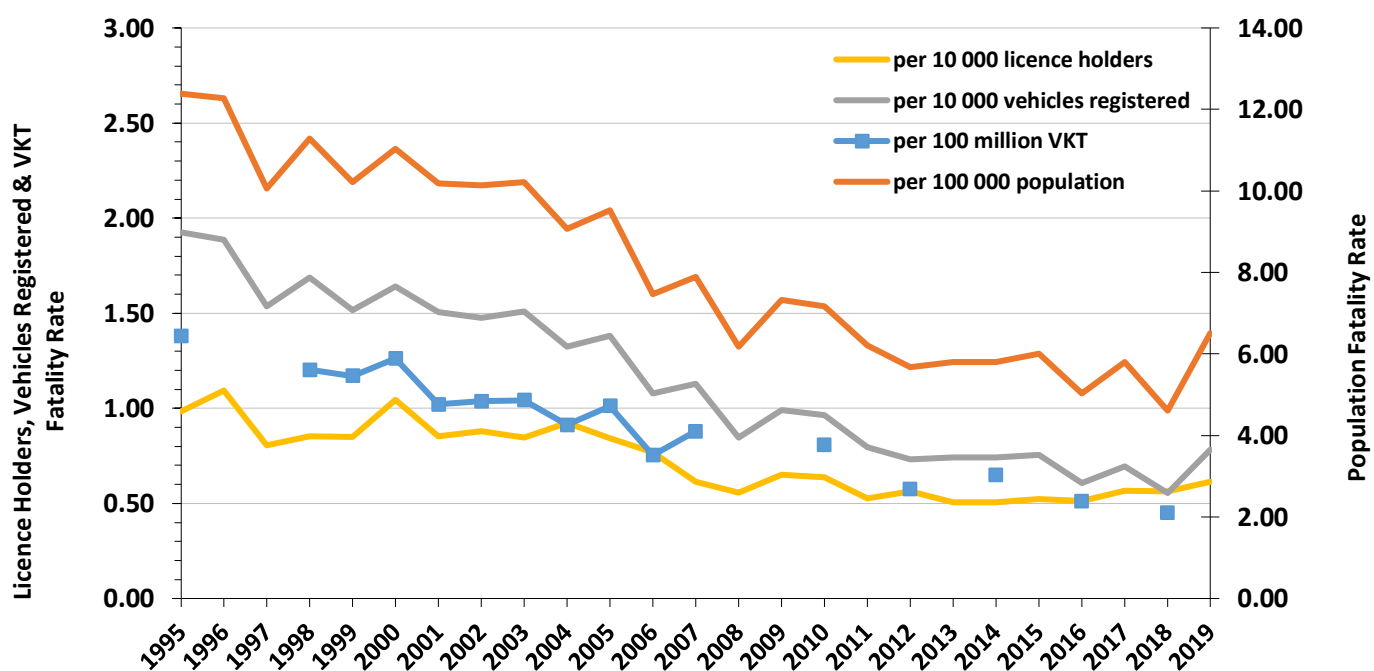


Figure 2: Fatality Rates in South Australia, 1995 - 2019



Note: Changes were made to the Property Damage Only (PDO) definition in 1998, 2003, 2013, 2016 and 2017. Refer to **Scope**, page 5 for full details.

Table 2: Comparison with other Australian States¹, 2019

	Fatalities ¹	Vehicles on register ² ('000)	Population ³ ('000)	Fatalities per 10 000 vehicles	Fatalities per 100 000 population
SOUTH AUSTRALIA	114	1,460	1752	0.78	6.51
New South Wales	352	5,702	8090	0.62	4.35
Victoria	268	5,031	6595	0.53	4.06
Queensland	217	4,134	5095	0.52	4.26
Western Australia	163	2,245	2622	0.73	6.22
Tasmania	32	493	534	0.65	5.99
Australian Capital Territory	6	309	427	0.19	1.41
Northern Territory	36	162	246	2.23	14.64
AUSTRALIA	1188	19,537	25364	0.61	4.68

Table 3: Road Crash Fatalities by Age Group compared with Deaths Registered in South Australia, 2018

Age Groups	Deaths Registered in South Australia ⁴	Road Fatalities ⁵	
		Number	% of All Deaths
0-14	95	3	3%
15-19	35	11	31%
20-24	37	7	19%
25-29	55	6	11%
30-34	71	3	4%
35-39	85	4	5%
40-49	326	13	4%
50-59	852	7	1%
60-69	1584	11	1%
70+	10431	15	0%
Unknown	3	0	0%
TOTAL	13574	80	1%

¹ Australian data based on information published by the Bureau of Infrastructure, Transport and Regional Economics (BITRE) for 2019.

² Australian figures (except SA) are as at June 2019. Source: Australian Bureau of Statistics, *Motor Vehicle Census Australia*, cat. no. 9309.0. These figures may not agree with registration statistics for individual States and Territories. Data for SA sourced from TRUMPS, as of June 2019.

³ Population as of June 2019. Source: Australian Bureau of Statistics, *Australian Demographic Statistics*, cat.no. 3101.0

⁴ Source: Australian Bureau of Statistics, *Deaths, Australia 2018*, cat.no. 3302.0.

⁵ Source: The Departments TARS road crash database.

Note:

Changes were made to the Property Damage Only (PDO) definition in 1998, 2003, 2013, 2016 and 2017. Refer to **Scope**, page 5 for full details.

Table 4: Casualties by Road User Type and Severity, 1995 - 2019

Year	Vehicle Occupant						Motorcyclist						Pedestrian			Bicyclist			Other Road User			ALL ROAD USERS		
	Driver			Passenger			Rider			Pillion Passenger			F	SI	MI	F	SI	MI	F	SI	MI	F	SI	MI
	F	SI	MI	F	SI	MI	F	SI	MI	F	SI	MI												
1995	84	648	3571	36	432	1823	12	153	359	0	22	50	40	186	411	8	80	421	2	0	3	182	1521	6638
1996	92	779	3615	40	522	1922	15	189	365	3	14	33	24	153	428	7	59	403	0	4	9	181	1720	6775
1997	67	712	3724	44	408	1749	13	144	353	1	15	31	20	147	427	4	79	427	0	4	5	149	1509	6716
1998	72	779	4213	44	383	1972	13	157	314	0	20	26	35	142	402	4	79	408	0	6	10	168	1566	7345
1999	71	749	4749	38	456	2173	15	123	277	0	14	20	26	178	419	3	84	425	0	3	8	153	1607	8071
2000	91	739	5132	37	490	2191	16	158	323	0	12	25	21	151	409	1	75	412	0	2	9	166	1627	8501
2001	76	809	5023	32	419	2298	13	156	300	1	13	21	26	143	426	6	58	417	0	5	12	154	1603	8497
2002	72	753	5012	39	434	2196	20	153	321	1	7	22	19	129	425	3	59	402	0	3	4	154	1538	8382
2003	77	783	4663	44	343	1896	12	144	280	1	19	27	17	115	359	5	63	367	0	3	5	156	1470	7597
2004	80	687	4320	23	316	1915	20	157	288	1	9	20	12	104	369	3	57	382	0	1	3	139	1331	7297
2005	74	646	3943	39	342	1598	18	125	276	2	11	19	11	111	374	3	61	418	0	0	1	147	1296	6629
2006	58	670	3772	20	302	1586	22	178	322	1	17	22	12	111	365	4	80	419	0	0	3	117	1358	6489
2007	58	685	4011	37	347	1762	8	162	409	0	10	17	17	108	330	5	56	429	0	0	3	125	1368	6961
2008	45	582	4211	24	264	1720	16	176	435	1	8	23	12	120	334	1	67	447	0	0	4	99	1217	7174
2009	60	549	4010	32	243	1479	14	159	389	1	9	15	10	89	279	2	59	442	0	0	4	119	1108	6618
2010	57	500	4205	24	211	1574	16	146	388	0	7	20	16	103	245	5	82	470	0	1	5	118	1050	6907
2011	40	445	4236	22	193	1505	20	143	361	1	9	19	17	77	269	3	61	499	0	4	7	103	932	6896
2012	52	350	4027	14	137	1431	13	113	339	2	6	14	10	77	296	3	78	516	0	0	1	94	761	6624
2013	48	384	3860	17	122	1326	12	129	369	0	5	18	15	87	231	5	63	486	0	0	0	97	790	6290
2014	52	320	3779	24	135	1225	11	127	417	0	3	20	17	62	227	4	64	495	0	0	0	108	711	6163
2015	52	358	3444	17	132	1247	11	139	386	0	6	13	18	50	205	4	74	505	0	0	0	102	759	5800
2016	41	325	3495	23	140	1200	8	105	390	0	4	9	9	66	245	5	52	448	0	0	0	86	692	5787
2017	46	313	3351	11	121	1082	24	105	377	0	3	9	17	41	246	2	39	450	0	0	0	100	622	5515
2018	41	277	3317	16	87	1079	10	97	391	0	6	11	6	58	233	7	51	435	0	0	2	80	576	5468
2019	60	349	3122	9	108	1048	17	196	294	0	5	10	21	80	220	7	94	383	0	1	7	114	833	5084

F – Fatality, SI – Serious Injury, MI – Minor Injury

Note:

Changes were made to the Property Damage Only (PDO) definition in 1998, 2003, 2013, 2016 and 2017. Refer to **Scope**, page 5 for full details.

Table 5: Casualties by Age Group and Severity, 1995 – 2019

Year	0-15			16-19			20-24			25-29			30-39			40-49			50-59			60-69			70+			Unknown			ALL CASUALTIES		
	F	SI	MI	F	SI	MI	F	SI	MI	F	SI	MI	F	SI	MI	F	SI	MI	F	SI	MI	F	SI	MI	F	SI	MI	F	SI	MI	F	SI	MI
1995	14	132	597	22	225	884	24	255	1094	16	168	716	39	226	1056	18	154	807	10	94	450	19	69	308	20	99	330	0	99	396	182	1521	6638
1996	12	162	642	18	230	931	27	279	1002	21	203	708	26	267	1155	23	160	824	12	98	475	15	101	286	26	118	362	1	102	390	181	1720	6775
1997	8	149	603	19	194	840	21	233	973	13	149	718	28	255	1127	11	150	866	11	91	524	12	79	307	24	110	350	2	99	408	149	1509	6716
1998	10	134	623	18	251	979	17	212	1099	12	172	820	25	225	1207	21	181	889	12	103	555	14	66	315	37	120	346	2	102	512	168	1566	7345
1999	14	147	662	21	218	987	23	222	1056	11	136	904	22	225	1337	18	172	996	11	110	620	13	81	347	20	118	343	0	178	819	153	1607	8071
2000	11	121	547	26	212	1115	16	229	1180	23	158	893	21	225	1427	21	196	1042	10	113	698	14	81	396	24	111	376	0	181	827	166	1627	8501
2001	10	101	519	16	223	1092	14	210	1168	16	159	887	32	260	1405	14	192	1120	11	128	724	13	72	346	28	80	388	0	178	848	154	1603	8497
2002	16	107	461	16	198	1142	18	213	1159	17	164	875	28	241	1385	24	177	1088	10	104	680	5	54	349	20	108	416	0	172	827	154	1538	8382
2003	11	81	434	21	189	993	20	225	1060	11	147	750	26	244	1282	19	182	1081	18	119	701	10	62	329	20	100	331	0	121	636	156	1470	7597
2004	7	64	423	7	199	905	27	212	1045	17	135	652	26	207	1204	18	169	961	17	98	626	11	56	351	9	84	369	0	107	761	139	1331	7297
2005	8	86	349	18	173	874	28	195	920	19	115	616	16	205	1099	19	157	956	11	121	626	11	77	341	17	94	315	0	73	533	147	1296	6629
2006	3	74	441	12	181	707	17	186	932	11	129	610	17	225	1028	23	181	901	14	122	681	10	70	355	10	88	344	0	102	490	117	1358	6489
2007	6	60	402	18	173	804	16	210	970	14	137	703	14	214	1102	13	167	982	10	139	691	5	73	352	29	100	388	0	95	567	125	1368	6961
2008	5	51	439	16	157	812	12	177	921	10	114	700	19	211	1156	9	164	1064	13	110	797	4	75	434	11	91	365	0	67	486	99	1217	7174
2009	4	60	393	20	138	765	22	138	827	10	124	682	17	179	1120	20	132	1040	12	112	728	2	81	417	12	94	320	0	50	326	119	1108	6618
2010	5	49	397	19	110	737	12	131	846	5	121	740	16	145	1156	22	155	1013	17	112	879	8	72	406	14	120	381	0	35	352	118	1050	6907
2011	4	43	388	6	94	694	5	127	937	9	95	688	22	146	1177	22	141	1055	12	106	833	4	77	460	19	73	390	0	30	274	103	932	6896
2012	3	32	393	7	76	616	10	104	837	7	75	695	9	106	1139	16	112	997	11	91	785	9	70	464	22	73	423	0	22	275	94	761	6624
2013	6	37	349	2	50	569	13	93	757	5	81	692	6	112	1049	20	120	959	12	117	769	9	70	457	24	82	451	0	28	238	97	790	6290
2014	7	26	337	6	80	517	11	90	764	9	71	652	13	99	998	21	122	966	6	93	773	13	54	510	22	57	423	0	19	223	108	711	6163
2015	5	28	381	7	71	525	9	84	687	7	60	594	13	128	925	13	106	826	11	105	789	14	78	442	23	80	431	0	19	200	102	759	5800
2016	5	33	382	3	81	508	12	86	733	9	76	592	11	82	923	15	94	824	3	97	711	5	51	481	23	87	438	0	5	195	86	692	5787
2017	3	26	411	8	43	487	12	56	581	8	54	560	10	81	833	11	83	806	11	88	701	12	60	450	25	110	438	0	21	248	100	622	5515
2018	4	26	382	10	48	447	7	63	606	6	50	549	7	72	904	13	79	785	7	83	743	11	55	470	15	83	425	0	17	157	80	576	5468
2019	3	32	362	9	64	405	12	94	589	6	79	484	20	128	855	15	93	731	13	122	675	7	103	456	29	109	446	0	9	81	114	833	5084

F – Fatality, SI – Serious Injury, MI – Minor Injury

Note:

Changes were made to the Property Damage Only (PDO) definition in 1998, 2003, 2013, 2016 and 2017. Refer to **Scope**, page 5 for full details.

Table 6: Casualties by Sex and Severity, 1995 – 2019

Year	Male			Female			Unknown			ALL PERSONS		
	F	SI	MI	F	SI	MI	F	SI	MI	F	SI	MI
1995	130	967	3233	52	553	3355	0	1	50	182	1521	6638
1996	132	1046	3170	48	669	3571	1	5	34	181	1720	6775
1997	98	947	3173	51	554	3488	0	8	55	149	1509	6716
1998	111	941	3277	55	605	3897	2	20	171	168	1566	7345
1999	96	965	3715	56	613	4192	1	29	164	153	1607	8071
2000	121	981	3914	45	626	4479	0	20	108	166	1627	8501
2001	113	974	3929	41	621	4504	0	8	64	154	1603	8497
2002	117	961	3951	37	574	4426	0	3	5	154	1538	8382
2003	109	914	3596	47	552	3995	0	4	6	156	1470	7597
2004	111	823	3467	28	507	3808	0	1	22	139	1331	7297
2005	108	831	3284	39	464	3320	0	1	25	147	1296	6629
2006	89	873	3082	28	485	3401	0	0	6	117	1358	6489
2007	94	871	3315	31	497	3621	0	0	25	125	1368	6961
2008	74	758	3369	25	459	3794	0	0	11	99	1217	7174
2009	92	702	3182	27	404	3419	0	2	17	119	1108	6618
2010	75	663	3259	43	386	3635	0	1	13	118	1050	6907
2011	76	584	3278	27	348	3610	0	0	8	103	932	6896
2012	72	499	3150	22	262	3464	0	0	10	94	761	6624
2013	68	502	2940	29	288	3338	0	0	12	97	790	6290
2014	76	472	2922	32	239	3239	0	0	2	108	711	6163
2015	66	502	2773	36	256	3021	0	1	6	102	759	5800
2016	56	430	2800	30	262	2975	0	0	12	86	692	5787
2017	80	391	2689	20	231	2816	0	0	10	100	622	5515
2018	62	370	2605	18	206	2849	0	0	14	80	576	5468
2019	86	570	2427	28	263	2640	0	0	17	114	833	5084

F – Fatality, SI – Serious Injury, MI – Minor Injury

Note:

Changes were made to the Property Damage Only (PDO) definition in 1998, 2003, 2013, 2016 and 2017. Refer to **Scope**, page 5 for full details.

Table 7: Crashes and Casualties by Region¹ and Severity, 1995 – 2019

Year	Metropolitan Adelaide ¹					Rural South Australia ¹												
	Crashes					Casualties				Crashes					Casualties			
	Fatal Crashes	Serious Injury Crashes	Minor Injury Crashes	Property Damage Crashes	ALL CRASHES	Fatalities	Serious Injuries	Minor Injuries	ALL CASUALTIES	Fatal Crashes	Serious Injury Crashes	Minor Injury Crashes	Property Damage Crashes	ALL CRASHES	Fatalities	Serious Injuries	Minor Injuries	ALL CASUALTIES
1995	77	677	4120	27726	32600	77	817	5152	6046	87	509	978	5122	6696	105	704	1486	2295
1996	68	700	4031	27232	32031	73	861	5206	6140	94	625	991	5194	6904	108	860	1568	2536
1997	52	665	4199	27194	32110	55	800	5294	6149	72	504	928	5231	6735	94	711	1410	2215
1998	65	698	4579	27285	32627	70	855	5868	6793	87	527	970	5360	6944	98	710	1474	2282
1999	56	674	5091	28790	34611	61	830	6618	7509	76	564	956	5499	7095	92	777	1454	2323
2000	63	681	5423	28055	34222	68	842	6983	7893	88	548	1009	5117	6762	98	785	1516	2399
2001	64	647	5369	27988	34068	67	768	6950	7785	73	598	983	5051	6705	87	835	1548	2470
2002	49	621	5218	27582	33470	54	754	6743	7551	89	578	1031	4942	6640	100	784	1639	2523
2003	57	585	4839	19316	24797	62	731	6188	6981	78	584	947	3902	5511	94	739	1409	2242
2004	61	577	4583	12713	17934	64	692	5903	6659	67	494	938	2835	4334	75	639	1394	2108
2005	47	513	4212	12225	16997	51	620	5300	5971	79	481	894	2720	4174	96	676	1329	2101
2006	50	619	4146	11919	16734	54	730	5159	5943	54	473	863	2594	3984	63	628	1330	2021
2007	45	614	4380	12504	17543	49	722	5565	6336	63	476	915	2726	4180	76	646	1396	2118
2008	40	557	4643	12516	17756	44	649	5766	6459	47	439	972	2707	4165	55	568	1408	2031
2009	36	494	4287	12640	17457	41	565	5314	5920	68	414	926	2866	4274	78	543	1304	1925
2010	44	478	4505	12971	17998	45	531	5632	6208	61	408	919	2906	4294	73	519	1275	1867
2011	41	419	4572	14088	19120	42	472	5603	6117	54	362	899	2883	4198	61	460	1293	1814
2012	29	347	4464	13915	18755	31	384	5378	5793	57	290	913	2814	4074	63	377	1246	1686
2013	41	394	4379	9242	14056	43	459	5375	5877	48	272	658	1641	2619	54	331	915	1300
2014	37	346	4328	8920	13631	38	376	5203	5617	59	248	677	1549	2533	70	335	960	1365
2015	43	391	3916	8613	12963	43	428	4800	5271	53	266	700	1450	2469	59	331	1000	1390
2016	32	339	3881	9886	14138	34	382	4762	5178	45	235	681	1676	2637	52	310	1025	1387
2017	54	322	3703	6977	11056	56	359	4583	4998	39	211	671	1260	2181	44	263	932	1239
2018	24	284	3758	7466	11532	24	323	4572	4919	51	201	635	1180	2067	56	253	896	1205
2019	49	504	3393	7121	11067	49	553	4294	4896	61	225	544	1067	1897	65	280	790	1135

¹ From 2013 onwards, regional boundaries have been adjusted to the new ABS Greater Adelaide Statistical Division – For more information please look at *Preface* and *Definitions & Explanatory Notes*

Note:

Changes were made to the Property Damage Only (PDO) definition in 1998, 2003, 2013, 2016 and 2017. Refer to **Scope**, page 5 for full details.

Road Crashes in 2019

Time Distribution
Crash Types
Definition for Coding Accidents
Crash Location
Top Intersections
Motor Vehicle Types
Involvement and Responsibility
Speed

Table 8: Crashes and Casualties during Holiday Periods by Severity

Period	Crashes					Casualties			
	Fatal Crashes	Serious Injury Crashes	Minor Injury Crashes	Property Damage Crashes	ALL CRASHES	Fatalities	Serious Injuries	Minor Injuries	ALL CASUALTIES
New Year (1 January) (1 Day)	0	2	10	10	22	0	2	13	15
Australia Day Weekend (26 January - 28 January) (3 Days)	2	4	18	41	65	2	4	23	29
Adelaide Cup (9 March – 11 March) (3 Days)	0	9	29	54	92	0	9	36	45
Easter (19 April – 22 April) (4 Days)	2	1	28	54	85	3	1	48	52
Anzac Day (25 April) (1 Day)	0	0	5	8	13	0	0	7	7
Queen’s Birthday (8 June – 10 June) (3 Days)	1	5	28	50	84	1	7	39	47
Labour Day (5 October – 7 October) (3 Days)	2	6	19	40	67	2	6	27	35
Christmas Period (21 December - 29 December) (9 Days)	6	21	60	122	209	6	22	83	111
SCHOOL HOLIDAYS									
January (1 January – 28 January) (28 Days)	11	41	261	517	830	11	45	343	399
April (13 April – 28 April) (16 Days)	4	23	153	316	496	5	23	208	236
July (6 July - 21 July) (16 Days)	3	34	156	345	538	3	37	208	248
September (28 September – 13 October) (16 Days)	6	33	155	319	513	6	35	220	261
December (14 December – 31 December) (18 Days)	12	41	140	314	507	12	47	192	251

Table 9a: Casualty Crashes by Time of Day, Day of Week

Time Period	Day of Week							TOTAL
	Monday	Tuesday	Wednesday	Thursday	Friday	Saturday	Sunday	
00:00 - 01:59	9	11	10	7	11	20	23	91
02:00 - 03:59	6	6	3	6	3	11	11	46
04:00 - 05:59	9	9	9	14	9	14	7	71
06:00 - 07:59	55	73	92	56	39	18	17	350
08:00 - 09:59	108	129	127	116	99	51	39	669
10:00 - 11:59	68	77	56	78	77	86	64	506
12:00 - 13:59	73	79	75	88	98	98	60	571
14:00 - 15:59	90	107	103	122	154	76	88	740
16:00 - 17:59	115	148	164	150	118	67	82	844
18:00 - 19:59	54	65	79	97	65	41	54	455
20:00 - 21:59	37	31	35	42	41	56	25	267
22:00 - 23:59	15	20	19	20	30	38	24	166
TOTAL	639	755	772	796	744	576	494	4776

Figure 3: Casualty Crashes by Time of Day, Day of Week

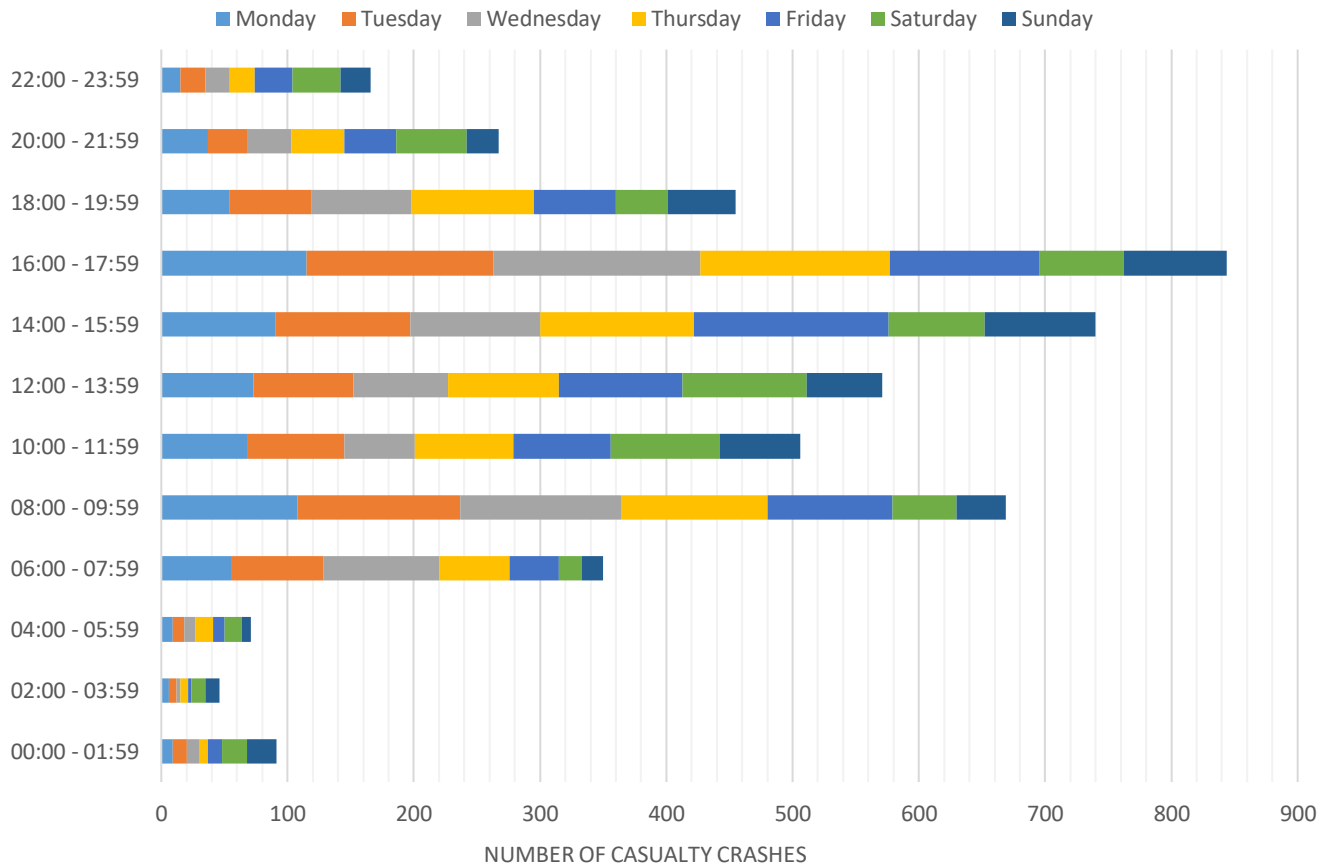


Table 9b: Casualties by Time of Day, Day of Week

Time Period	Day of Week							TOTAL
	Monday	Tuesday	Wednesday	Thursday	Friday	Saturday	Sunday	
00:00 - 01:59	13	12	10	8	13	31	31	118
02:00 - 03:59	6	6	3	7	3	15	14	54
04:00 - 05:59	12	9	12	15	11	19	8	86
06:00 - 07:59	61	82	106	63	48	19	22	401
08:00 - 09:59	138	165	171	137	120	62	47	840
10:00 - 11:59	91	108	78	101	106	98	88	670
12:00 - 13:59	89	105	93	110	122	121	79	719
14:00 - 15:59	108	136	127	152	195	111	121	950
16:00 - 17:59	140	178	210	176	154	80	106	1044
18:00 - 19:59	64	86	104	114	82	57	84	591
20:00 - 21:59	45	36	38	52	55	85	30	341
22:00 - 23:59	21	23	28	23	36	55	31	217
TOTAL	788	946	980	958	945	753	661	6031

Table 9c: All Crashes by Time of Day, Day of Week

Time Period	Day of Week							TOTAL
	Monday	Tuesday	Wednesday	Thursday	Friday	Saturday	Sunday	
00:00 - 01:59	24	30	30	18	28	53	69	252
02:00 - 03:59	16	17	13	21	12	30	43	152
04:00 - 05:59	36	33	37	32	33	38	29	238
06:00 - 07:59	171	174	195	175	151	56	43	965
08:00 - 09:59	287	334	364	301	305	122	76	1789
10:00 - 11:59	185	205	195	197	217	240	167	1406
12:00 - 13:59	219	225	201	214	232	238	178	1507
14:00 - 15:59	248	337	315	326	382	202	181	1991
16:00 - 17:59	341	373	381	402	370	175	190	2232
18:00 - 19:59	161	176	208	233	206	129	142	1255
20:00 - 21:59	83	86	91	103	112	123	85	683
22:00 - 23:59	50	57	69	61	90	117	50	494
TOTAL	1821	2047	2099	2083	2138	1523	1253	12964

Table 10: Crashes and Casualties by Month of Year and Severity

Month	Crashes				ALL CRASHES	Casualties			
	Fatal Crashes	Serious Injury Crashes	Minor Injury Crashes	Property Damage Crashes		Fatalities	Serious Injuries	Minor Injuries	ALL CASUALTIES
January	14	47	294	593	948	14	54	387	455
February	3	46	386	600	1035	3	49	483	535
March	12	63	392	676	1143	13	82	500	595
April	10	50	316	668	1044	11	52	430	493
May	12	63	365	822	1262	12	72	446	530
June	8	53	327	708	1096	8	64	429	501
July	8	55	307	703	1073	8	60	392	460
August	7	69	332	687	1095	8	82	414	504
September	3	61	315	675	1054	3	68	415	486
October	8	69	327	747	1151	8	75	426	509
November	12	73	303	690	1078	13	85	401	499
December	13	80	273	619	985	13	90	361	464
TOTAL	110	729	3937	8188	12964	114	833	5084	6031

Table 11a: Crashes and Casualties by Crash Type and Severity:
Metropolitan Adelaide

	Crashes					Casualties			
	Fatal Crashes	Serious Injury Crashes	Minor Injury Crashes	Property Damage Crashes	ALL CRASHES	Fatalities	Serious Injuries	Minor Injuries	ALL CASUALTIES
MULTI VEHICLE									
Head On	3	20	65	76	164	3	29	104	136
Rear End	1	52	1162	1977	3192	1	56	1466	1523
Side Swipe	5	30	262	1038	1335	5	33	293	331
Right Angle	0	91	715	1336	2142	0	102	946	1048
Right Turn	1	52	350	594	997	1	57	527	585
Hit Parked Vehicle	1	31	158	724	914	1	33	185	219
Sub-total	11	276	2712	5745	8744	11	310	3521	3842
SINGLE VEHICLE									
Hit Fixed Object	20	88	341	1029	1478	20	98	404	522
Hit Pedestrian	14	65	181	128	388	14	69	193	276
Hit Animal	0	1	10	50	61	0	1	11	12
Hit Object on Road	0	6	8	32	46	0	6	8	14
Roll Over	3	58	116	55	232	3	59	128	190
Left Road Out of Control	0	5	9	32	46	0	5	10	15
Other	1	5	16	50	72	1	5	19	25
Sub -total	38	228	681	1376	2323	38	243	773	1054
TOTAL	49	504	3393	7121	11067	49	553	4294	4896

Table 11b: Crashes and Casualties by Crash Type and Severity:
Rural

	Crashes					Casualties			
	Fatal Crashes	Serious Injury Crashes	Minor Injury Crashes	Property Damage Crashes	ALL CRASHES	Fatalities	Serious Injuries	Minor Injuries	ALL CASUALTIES
MULTI VEHICLE									
Head On	14	17	21	28	80	17	32	47	96
Rear End	4	17	40	93	154	4	23	64	91
Side Swipe	5	8	22	63	98	5	11	37	53
Right Angle	4	21	102	200	327	5	30	168	203
Right Turn	0	5	19	29	53	0	6	39	45
Hit Parked Vehicle	1	4	12	52	69	1	5	16	22
Sub-total	28	72	216	465	781	32	107	371	510
SINGLE VEHICLE									
Hit Fixed Object	19	57	156	302	534	19	64	194	277
Hit Pedestrian	6	10	24	11	51	6	11	26	43
Hit Animal	0	9	16	100	125	0	9	20	29
Hit Object on Road	0	3	2	17	22	0	3	2	5
Roll Over	8	64	116	124	312	8	76	162	246
Left Road Out of Control	0	8	11	29	48	0	8	12	20
Other	0	2	3	19	24	0	2	3	5
Sub -total	33	153	328	602	1116	33	173	419	625
TOTAL	61	225	544	1067	1897	65	280	790	1135

Table 11c: Crashes and Casualties by Crash Type and Severity:
South Australia

	Crashes					Casualties			
	Fatal Crashes	Serious Injury Crashes	Minor Injury Crashes	Property Damage Crashes	ALL CRASHES	Fatalities	Serious Injuries	Minor Injuries	ALL CASUALTIES
MULTI VEHICLE									
Head On	17	37	86	104	244	20	61	151	232
Rear End	5	69	1202	2070	3346	5	79	1530	1614
Side Swipe	10	38	284	1101	1433	10	44	330	384
Right Angle	4	112	817	1536	2469	5	132	1114	1251
Right Turn	1	57	369	623	1050	1	63	566	630
Hit Parked Vehicle	2	35	170	776	983	2	38	201	241
Sub-total	39	348	2928	6210	9525	43	417	3892	4352
SINGLE VEHICLE									
Hit Fixed Object	39	145	497	1331	2012	39	162	598	799
Hit Pedestrian	20	75	205	139	439	20	80	219	319
Hit Animal	0	10	26	150	186	0	10	31	41
Hit Object on Road	0	9	10	49	68	0	9	10	19
Roll Over	11	122	232	179	544	11	135	290	436
Left Road Out of Control	0	13	20	61	94	0	13	22	35
Other	1	7	19	69	96	1	7	22	30
Sub -total	71	381	1009	1978	3439	71	416	1192	1679
TOTAL	110	729	3937	8188	12964	114	833	5084	6031

Table 12: Hit Fixed Object Crashes by Object First Hit and Severity

Type of Fixed Object	Fatal Crashes	Serious Injury Crashes	Minor Injury Crashes	Property Damage Crashes	ALL CRASHES
Tree	24	61	209	374	668
Traffic Signal Pole	0	1	6	26	33
Pole - not Stobie	1	4	17	120	142
Bridge	0	0	5	8	13
Sign Post	0	10	28	61	99
Stobie Pole	3	18	65	135	221
Other Fixed Obstruction	8	40	133	495	676
Guard Rail	3	10	30	95	138
Wire Rope barrier	0	1	4	17	22
TOTAL	39	145	497	1331	2012

Table 13: Single Vehicle Crashes by Motor Vehicle Type and Severity

Type of Vehicle	Fatal Crashes	Serious Injury Crashes	Minor Injury Crashes	Property Damage Crashes	ALL CRASHES
Passenger Vehicle	52	229	806	1721	2808
Light Truck (≤4.5 Tonnes)	0	0	3	5	8
Heavy Vehicle	6	11	24	158	199
Buses	1	3	10	20	34
Motorcycles	11	106	108	65	290
Bicycles	1	31	56	9	97
Other	0	1	2	0	3
TOTAL	71	381	1009	1978	3439

Figure 4: Definition for Coding Accidents¹

100	101	102	103	104	105	106	107	108	109	110	111	112	113	114	115	116	117	118	119	120	121	122	123	124	125	126	127	128	129	130	131	132	133	134	135	136	137	138	139	140	141	142	143	144	145	146	147	148	149	150	151	152	153	154	155	156	157	158	159	160	161	162	163	164	165	166	167	168	169	170	171	172	173	174	175	176	177	178	179	180	181	182	183	184	185	186	187	188	189	190	191	192	193	194	195	196	197	198	199
NEAR SIDE	EMERGING	FAR SIDE	Playing, working, lying, standing on carriageway	WALKING WITH TRAFFIC	FACING TRAFFIC	ON FOOTPATH/ MEDIAN	DRIVEWAY	STRUCK WHILE BOARDING OR ALIGHTING VEHICLE	BOARDING & STRUCK BY SAME THIS INCLUDES WORKING/ PARKING VEHICLE	CROSS TRAFFIC	RIGHT/FAR	LEFT/FAR	RIGHT/NEAR	TWO RIGHT TURNING	RIGHT/LEFT/FAR	LEFT/NEAR	RIGHT/LEFT/NEAR	TWO LEFT TURN	STRUCK WHILE BOARDING OR ALIGHTING VEHICLE	OTHER ADJACENT	HEAD ON (NOT OVERTAKING)	RIGHT THRU	LEFT THRU	RIGHT LEFT	RIGHT RIGHT	LEFT LEFT	LEFT LEFT	RIGHT TURN SIDE SWIPE	LEFT TURN SIDE SWIPE	OTHER CROSSING	VEHICLES IN SAME LANES	REAR END	LEFT REAR	RIGHT END	LANE SIDE SWIPE	LANE CHANGE RIGHT (NOT OVERTAKING)	LANE CHANGE LEFT	RIGHT TURN SIDE SWIPE	LEFT TURN SIDE SWIPE	OTHER SAME DIRECTION	U TURN	U TURN INTO FIXED OBJECT/ PARKED VEHICLE	LEAVING PARKING	ENTERING PARKING	PARKING VEHICLES ONLY	REVERSING	REVERSING INTO FIXED OBJECT/ PARKED VEHICLE INCLUDES DRIVEWAYS	EMERGING FROM DRIVEWAY	FROM FOOTWAY	OTHER MANOEUVRING	HEAD ON (INCL SIDE SWIPE)	OUT OF CONTROL	PULLING OUT	CUTTING IN	PULLING OUT - REAR END	TEMPORARY ROADWORKS	STRUCK OBJECT ON CARRIAGEWAY	ANIMAL (NOT RIDEN)	OFF CARRIAGEWAY	LEFT OFF CARRIAGEWAY INTO OBJECT/PARKED VEHICLE	OFF CARRIAGEWAY TO RIGHT	PERMANENT OBSTRUCTION ON CARRIAGEWAY	TEMPORARY ROADWORKS	STRUCK OBJECT ON CARRIAGEWAY	ANIMAL (NOT RIDEN)	PARKED	DOUBLE PARKED	ACCIDENT OR BROKEN DOWN	VEHICLE DOOR	PERMANENT OBSTRUCTION ON CARRIAGEWAY	TEMPORARY ROADWORKS	STRUCK OBJECT ON CARRIAGEWAY	ANIMAL (NOT RIDEN)	OTHER HIT PARKED CAR OPPOSITE SIDE OF ROAD ON PATH	OFF CARRIAGEWAY RIGHT BEND	OFF RIGHT BEND INTO OBJECT/PARKED VEHICLE	OFF CARRIAGEWAY LEFT BEND	OFF LEFT BEND INTO OBJECT/PARKED VEHICLE	OUT OF CONTROL ON CARRIAGEWAY	OTHER CURVE	FELL IN/FROM VEHICLE	LOAD OR MISSILE STRUCK VEHICLE	STRUCK TRAIN	STRUCK RAILWAY CROSSING FURNITURE	PARKED CAR RUN AWAY	OTHER UNKNOWN	PASSENGER and miscellaneous	Off path on curve	Off path on straight	On path	Overtaking	Manoeuvring	Vehicles from same direction	Vehicles from opposing directions	Vehicles from adjacent directions (intersections only)	Pedestrian on foot in toy/pram			

¹ Definition for Coding Accidents – For more information please see *Preface* and *Definitions & Explanatory Notes*

Table 14a: Crashes and Casualties by DCA: Metropolitan Adelaide

Location Type	Crashes				Casualties				
	Fatal Crashes	Serious Injury Crashes	Minor Injury Crashes	Property Damage Crashes	ALL CRASHES	Fatalities	Serious Injuries	Minor Injuries	ALL CASUALTIES
PEDESTRIANS									
100	4	29	67	48	148	4	29	72	105
101	0	3	9	4	16	0	3	9	12
102	7	13	41	23	84	7	15	43	65
103	0	4	12	17	33	0	4	12	16
104	1	2	4	5	12	1	2	4	7
105	0	0	0	3	3	0	0	0	0
106	3	2	3	2	10	3	4	6	13
107	0	2	14	14	30	0	2	15	17
108	0	2	4	1	7	0	2	4	6
109	0	9	30	14	53	0	9	31	40
Sub-total	15	66	184	131	396	15	70	196	281
ADJ DIRECTIONS									
110	0	31	187	300	518	0	40	273	313
111	0	5	60	133	198	0	5	79	84
112	0	0	1	10	11	0	0	1	1
113	0	32	230	425	687	0	34	321	355
114	0	0	17	29	46	0	0	21	21
115	0	0	7	10	17	0	0	8	8
116	0	9	70	133	212	0	9	80	89
117	0	0	0	1	1	0	0	0	0
118	0	0	0	6	6	0	0	0	0
119	0	2	11	15	28	0	2	11	13
Sub-total	0	79	583	1062	1724	0	90	794	884
OPP DIRECTIONS									
120	4	19	65	74	162	4	27	104	135
121	1	51	339	575	966	1	56	504	561
122	0	0	0	2	2	0	0	0	0
123	0	0	8	13	21	0	0	11	11
124	0	0	2	6	8	0	0	2	2
125	0	0	0	0	0	0	0	0	0
129	0	1	1	2	4	0	1	1	2
Sub-total	5	71	415	672	1163	5	84	622	711
SAME DIRECTION									
130	0	40	904	1582	2526	0	42	1141	1183
131	0	6	120	151	277	0	6	139	145
132	1	7	133	184	325	1	9	185	195
133	2	6	29	205	242	2	9	34	45
134	1	5	51	228	285	1	5	57	63
135	1	2	38	244	285	1	2	43	46
136	0	0	15	60	75	0	0	15	15
137	1	6	46	85	138	1	6	47	54
139	0	2	1	7	10	0	2	1	3
Sub-total	6	74	1337	2746	4163	6	81	1662	1749
MANOEUVERING									
140	0	7	47	126	180	0	7	68	75
141	0	0	6	26	32	0	0	7	7
142	0	1	18	52	71	0	1	21	22
143	0	1	8	4	13	0	1	8	9
144	1	0	3	21	25	1	0	3	4
145	0	0	6	55	61	0	0	7	7

Table 14a: Crashes and Casualties by DCA: Metropolitan Adelaide (cont.)

Location Type	Crashes					Casualties			
	Fatal Crashes	Serious Injury Crashes	Minor Injury Crashes	Property Damage Crashes	ALL CRASHES	Fatalities	Serious Injuries	Minor Injuries	ALL CASUALTIES
146	1	3	5	70	79	1	3	7	11
147	0	7	96	193	296	0	7	113	120
148	0	5	26	27	58	0	5	27	32
149	0	1	15	28	44	0	1	18	19
Sub-total	2	25	230	602	859	2	25	279	306
OVERTAKING									
150	0	2	1	1	4	0	4	4	8
151	1	3	1	2	7	1	3	1	5
152	0	2	7	19	28	0	2	8	10
153	0	0	2	8	10	0	0	3	3
154	0	0	1	5	6	0	0	1	1
159	0	0	9	35	44	0	0	10	10
Sub-total	1	7	21	70	99	1	9	27	37
ON PATH									
160	1	19	100	528	648	1	21	120	142
161	0	0	0	1	1	0	0	0	0
162	0	0	3	4	7	0	0	4	4
163	0	6	27	29	62	0	6	28	34
164	0	0	1	19	20	0	0	1	1
165	0	0	1	3	4	0	0	1	1
166	0	6	7	34	47	0	6	7	13
167	0	1	9	50	60	0	1	10	11
169	0	4	17	76	97	0	4	22	26
Sub-total	1	36	165	744	946	1	38	193	232
OFF PATH, STRAIGHT									
170	0	3	6	13	22	0	3	6	9
171	7	33	127	428	595	7	39	142	188
172	0	0	2	5	7	0	0	2	2
173	5	19	63	187	274	5	21	71	97
174	1	27	64	22	114	1	27	66	94
175	0	0	8	23	31	0	0	10	10
176	0	10	26	52	88	0	12	28	40
179	0	0	1	6	7	0	0	1	1
Sub-total	13	92	297	736	1138	13	102	326	441
OFF PATH, CURVE									
180	0	6	8	10	24	0	6	9	15
181	3	15	56	151	225	3	15	68	86
182	0	5	5	13	23	0	5	7	12
183	2	14	59	113	188	2	14	77	93
184	0	10	14	8	32	0	10	14	24
189	0	0	1	0	1	0	0	1	1
Sub-total	5	50	143	295	493	5	50	176	231
MISCELLANEOUS									
190	1	3	8	5	17	1	3	8	12
191	0	1	2	24	27	0	1	2	3
192	0	0	0	1	1	0	0	0	0
193	0	0	1	4	5	0	0	2	2
194	0	0	4	16	20	0	0	4	4
199	0	0	3	13	16	0	0	3	3
Sub-total	1	4	18	63	86	1	4	19	24
TOTAL	49	504	3393	7121	11067	49	553	4294	4896

Table 14b: Crashes and Casualties by DCA: Rural

Location Type	Crashes					Casualties			
	Fatal Crashes	Serious Injury Crashes	Minor Injury Crashes	Property Damage Crashes	ALL CRASHES	Fatalities	Serious Injuries	Minor Injuries	ALL CASUALTIES
PEDESTRIANS									
100	2	3	5	5	15	2	3	6	11
101	0	0	1	0	1	0	0	1	1
102	1	1	6	1	9	1	1	6	8
103	0	1	3	0	4	0	1	3	4
104	0	0	2	1	3	0	0	2	2
105	0	0	0	1	1	0	0	0	0
106	0	1	0	0	1	0	2	1	3
107	0	0	1	1	2	0	0	1	1
108	1	0	1	0	2	1	0	1	2
109	2	3	4	2	11	2	3	4	9
Sub-total	6	9	23	11	49	6	10	25	41
ADJ DIRECTIONS									
110	1	9	50	89	149	1	13	81	95
111	0	0	8	19	27	0	0	13	13
112	0	0	0	1	1	0	0	0	0
113	3	8	26	35	72	4	12	49	65
114	0	0	0	5	5	0	0	0	0
115	0	0	0	1	1	0	0	0	0
116	0	1	6	9	16	0	1	8	9
117	0	0	0	0	0	0	0	0	0
118	0	0	0	0	0	0	0	0	0
119	0	0	2	4	6	0	0	2	2
Sub-total	4	18	92	163	277	5	26	153	184
OPP DIRECTIONS									
120	12	16	22	27	77	14	30	48	92
121	0	3	18	28	49	0	4	37	41
122	0	0	0	0	0	0	0	0	0
123	0	0	0	0	0	0	0	0	0
124	0	0	0	0	0	0	0	0	0
125	0	0	0	0	0	0	0	0	0
129	0	1	0	0	1	0	1	1	2
Sub-total	12	20	40	55	127	14	35	86	135
SAME DIRECTION									
130	3	7	23	51	84	3	9	33	45
131	1	2	5	14	22	1	3	6	10
132	0	7	12	21	40	0	10	23	33
133	2	0	4	3	9	2	0	7	9
134	0	0	1	7	8	0	0	1	1
135	0	0	0	3	3	0	0	0	0
136	0	0	0	4	4	0	0	0	0
137	0	0	1	4	5	0	0	1	1
139	0	1	0	0	1	0	1	2	3
Sub-total	6	17	46	107	176	6	23	73	102
MANOEUVERING									
140	1	2	11	20	34	1	3	15	19
141	0	0	0	2	2	0	0	0	0
142	0	1	3	15	19	0	1	4	5
143	0	1	0	0	1	0	1	0	1
144	0	0	0	3	3	0	0	0	0
145	0	0	0	5	5	0	0	0	0

Table 14b: Crashes and Casualties by DCA: Rural (cont.)

Location Type	Crashes					Casualties			
	Fatal Crashes	Serious Injury Crashes	Minor Injury Crashes	Property Damage Crashes	ALL CRASHES	Fatalities	Serious Injuries	Minor Injuries	ALL CASUALTIES
146	0	0	0	9	9	0	0	0	0
147	0	3	6	28	37	0	4	11	15
148	0	0	1	2	3	0	0	1	1
149	1	0	4	7	12	1	0	4	5
Sub-total	2	7	25	91	125	2	9	35	46
OVERTAKING									
150	2	1	0	1	4	3	2	0	5
151	0	1	1	3	5	0	1	4	5
152	1	4	3	4	12	1	4	6	11
153	0	0	0	1	1	0	0	0	0
154	0	0	0	2	2	0	0	0	0
159	2	2	3	9	16	2	4	9	15
Sub-total	5	8	7	20	40	6	11	19	36
ON PATH									
160	0	3	10	37	50	0	3	11	14
161	0	0	0	0	0	0	0	0	0
162	0	0	1	0	1	0	0	1	1
163	0	0	1	1	2	0	0	1	1
164	0	0	0	6	6	0	0	0	0
165	0	0	0	0	0	0	0	0	0
166	0	3	2	17	22	0	3	2	5
167	0	9	16	100	125	0	9	20	29
169	0	0	0	5	5	0	0	0	0
Sub-total	0	15	30	166	211	0	15	35	50
OFF PATH, STRAIGHT									
170	0	5	8	30	43	0	5	9	14
171	8	13	33	98	152	8	16	44	68
172	1	5	8	8	22	1	7	14	22
173	6	15	28	50	99	6	18	37	61
174	3	25	31	23	82	3	27	47	77
175	0	0	5	10	15	0	0	6	6
176	0	11	41	46	98	0	11	53	64
179	1	1	0	1	3	1	2	0	3
Sub-total	19	75	154	266	514	19	86	210	315
OFF PATH, CURVE									
180	2	13	24	26	65	2	17	31	50
181	2	17	27	55	101	2	19	36	57
182	0	3	6	18	27	0	4	8	12
183	3	13	44	51	111	3	14	49	66
184	0	8	20	17	45	0	9	23	32
189	0	0	0	1	1	0	0	0	0
Sub-total	7	54	121	168	350	7	63	147	217
MISCELLANEOUS									
190	0	1	1	0	2	0	1	1	2
191	0	0	1	13	14	0	0	1	1
192	0	0	0	0	0	0	0	0	0
193	0	0	2	0	2	0	0	3	3
194	0	1	1	3	5	0	1	1	2
199	0	0	1	4	5	0	0	1	1
Sub-total	0	2	6	20	28	0	2	7	9
TOTAL	61	225	544	1067	1897	65	280	790	1135

Table 14c: Crashes and Casualties by DCA: South Australia

Location Type	Crashes					Casualties			
	Fatal Crashes	Serious Injury Crashes	Minor Injury Crashes	Property Damage Crashes	ALL CRASHES	Fatalities	Serious Injuries	Minor Injuries	ALL CASUALTIES
PEDESTRIANS									
100	6	32	72	53	163	6	32	78	116
101	0	3	10	4	17	0	3	10	13
102	8	14	47	24	93	8	16	49	73
103	0	5	15	17	37	0	5	15	20
104	1	2	6	6	15	1	2	6	9
105	0	0	0	4	4	0	0	0	0
106	3	3	3	2	11	3	6	7	16
107	0	2	15	15	32	0	2	16	18
108	1	2	5	1	9	1	2	5	8
109	2	12	34	16	64	2	12	35	49
Sub-total	21	75	207	142	445	21	80	221	322
ADJ DIRECTIONS									
110	1	40	237	389	667	1	53	354	408
111	0	5	68	152	225	0	5	92	97
112	0	0	1	11	12	0	0	1	1
113	3	40	256	460	759	4	46	370	420
114	0	0	17	34	51	0	0	21	21
115	0	0	7	11	18	0	0	8	8
116	0	10	76	142	228	0	10	88	98
117	0	0	0	1	1	0	0	0	0
118	0	0	0	6	6	0	0	0	0
119	0	2	13	19	34	0	2	13	15
Sub-total	4	97	675	1225	2001	5	116	947	1068
OPP DIRECTIONS									
120	16	35	87	101	239	18	57	152	227
121	1	54	357	603	1015	1	60	541	602
122	0	0	0	2	2	0	0	0	0
123	0	0	8	13	21	0	0	11	11
124	0	0	2	6	8	0	0	2	2
125	0	0	0	0	0	0	0	0	0
129	0	2	1	2	5	0	2	2	4
Sub-total	17	91	455	727	1290	19	119	708	846
SAME DIRECTION									
130	3	47	927	1633	2610	3	51	1174	1228
131	1	8	125	165	299	1	9	145	155
132	1	14	145	205	365	1	19	208	228
133	4	6	33	208	251	4	9	41	54
134	1	5	52	235	293	1	5	58	64
135	1	2	38	247	288	1	2	43	46
136	0	0	15	64	79	0	0	15	15
137	1	6	47	89	143	1	6	48	55
139	0	3	1	7	11	0	3	3	6
Sub-total	12	91	1383	2853	4339	12	104	1735	1851
MANOEUVERING									
140	1	9	58	146	214	1	10	83	94
141	0	0	6	28	34	0	0	7	7
142	0	2	21	67	90	0	2	25	27
143	0	2	8	4	14	0	2	8	10
144	1	0	3	24	28	1	0	3	4
145	0	0	6	60	66	0	0	7	7

Table 14c: Crashes and Casualties by DCA: South Australia (cont.)

Location Type	Crashes					Casualties			
	Fatal Crashes	Serious Injury Crashes	Minor Injury Crashes	Property Damage Crashes	ALL CRASHES	Fatalities	Serious Injuries	Minor Injuries	ALL CASUALTIES
146	1	3	5	79	88	1	3	7	11
147	0	10	102	221	333	0	11	124	135
148	0	5	27	29	61	0	5	28	33
149	1	1	19	35	56	1	1	22	24
Sub-total	4	32	255	693	984	4	34	314	352
OVERTAKING									
150	2	3	1	2	8	3	6	4	13
151	1	4	2	5	12	1	4	5	10
152	1	6	10	23	40	1	6	14	21
153	0	0	2	9	11	0	0	3	3
154	0	0	1	7	8	0	0	1	1
159	2	2	12	44	60	2	4	19	25
Sub-total	6	15	28	90	139	7	20	46	73
ON PATH									
160	1	22	110	565	698	1	24	131	156
161	0	0	0	1	1	0	0	0	0
162	0	0	4	4	8	0	0	5	5
163	0	6	28	30	64	0	6	29	35
164	0	0	1	25	26	0	0	1	1
165	0	0	1	3	4	0	0	1	1
166	0	9	9	51	69	0	9	9	18
167	0	10	25	150	185	0	10	30	40
169	0	4	17	81	102	0	4	22	26
Sub-total	1	51	195	910	1157	1	53	228	282
OFF PATH, STRAIGHT									
170	0	8	14	43	65	0	8	15	23
171	15	46	160	526	747	15	55	186	256
172	1	5	10	13	29	1	7	16	24
173	11	34	91	237	373	11	39	108	158
174	4	52	95	45	196	4	54	113	171
175	0	0	13	33	46	0	0	16	16
176	0	21	67	98	186	0	23	81	104
179	1	1	1	7	10	1	2	1	4
Sub-total	32	167	451	1002	1652	32	188	536	756
OFF PATH, CURVE									
180	2	19	32	36	89	2	23	40	65
181	5	32	83	206	326	5	34	104	143
182	0	8	11	31	50	0	9	15	24
183	5	27	103	164	299	5	28	126	159
184	0	18	34	25	77	0	19	37	56
189	0	0	1	1	2	0	0	1	1
Sub-total	12	104	264	463	843	12	113	323	448
MISCELLANEOUS									
190	1	4	9	5	19	1	4	9	14
191	0	1	3	37	41	0	1	3	4
192	0	0	0	1	1	0	0	0	0
193	0	0	3	4	7	0	0	5	5
194	0	1	5	19	25	0	1	5	6
199	0	0	4	17	21	0	0	4	4
Sub-total	1	6	24	83	114	1	6	26	33
TOTAL	110	729	3937	8188	12964	114	833	5084	6031

Table 15a: Crashes and Casualties by Location Type and Severity:
Metropolitan Adelaide

Location Type	Crashes					Casualties			
	Fatal Crashes	Serious Injury Crashes	Minor Injury Crashes	Property Damage Crashes	ALL CRASHES	Fatalities	Serious Injuries	Minor Injuries	ALL CASUALTIES
INTERSECTION									
Interchange	0	0	2	9	11	0	0	5	5
Cross Road	5	104	820	1524	2453	5	117	1066	1188
Y-Junction	0	1	0	5	6	0	1	1	2
T-Junction	5	113	912	1727	2757	5	122	1187	1314
Multiple	0	5	29	69	103	0	6	36	42
Rail Crossing	0	0	1	11	12	0	0	1	1
Sub-total	10	223	1764	3345	5342	10	246	2296	2552
MID BLOCK									
Crossover	0	0	3	0	3	0	0	4	4
Rail Crossing	0	0	6	9	15	0	0	9	9
Divided Road	7	86	731	1727	2551	7	96	897	1000
Not Divided	25	181	800	1894	2900	25	195	976	1196
One Way	1	1	12	16	30	1	1	13	15
Freeway	1	11	45	96	153	1	13	58	72
Ramp On	0	0	3	5	8	0	0	3	3
Ramp Off	0	0	0	12	12	0	0	0	0
Pedestrian Crossing	2	1	24	13	40	2	1	30	33
Other Midblock	3	1	5	4	13	3	1	8	12
Sub-total	39	281	1629	3776	5725	39	307	1998	2344
TOTAL	49	504	3393	7121	11067	49	553	4294	4896

Table 15b: Crashes and Casualties by Location Type and Severity:
Rural

Location Type	Crashes					Casualties			
	Fatal Crashes	Serious Injury Crashes	Minor Injury Crashes	Property Damage Crashes	ALL CRASHES	Fatalities	Serious Injuries	Minor Injuries	ALL CASUALTIES
INTERSECTION									
Interchange	0	0	0	1	1	0	0	0	0
Cross Road	3	18	88	176	285	3	25	142	170
Y-Junction	0	0	1	1	2	0	0	2	2
T-Junction	6	21	85	141	253	7	27	135	169
Multiple	0	0	4	2	6	0	0	4	4
Rail Crossing	0	0	0	2	2	0	0	0	0
Sub-total	9	39	178	323	549	10	52	283	345
MID BLOCK									
Rail Crossing	0	0	3	3	6	0	0	4	4
Divided Road	2	4	17	34	57	2	8	21	31
Not Divided	44	176	345	701	1266	47	213	481	741
One Way	0	1	0	1	2	0	1	0	1
Freeway	2	1	1	3	7	2	1	1	4
Pedestrian Crossing	0	0	0	1	1	0	0	0	0
Other Midblock	4	4	0	1	9	4	5	0	9
Sub-total	52	186	366	744	1348	55	228	507	790
TOTAL	61	225	544	1067	1897	65	280	790	1135

Table 15c: Crashes and Casualties by Location Type and Severity:
South Australia

Location Type	Crashes				Casualties				
	Fatal Crashes	Serious Injury Crashes	Minor Injury Crashes	Property Damage Crashes	ALL CRASHES	Fatalities	Serious Injuries	Minor Injuries	ALL CASUALTIES
INTERSECTION									
Interchange	0	0	2	10	12	0	0	5	5
Cross Road	8	122	908	1700	2738	8	142	1208	1358
Y- Junction	0	1	1	6	8	0	1	3	4
T-Junction	11	134	997	1868	3010	12	149	1322	1483
Multiple	0	5	33	71	109	0	6	40	46
Rail Crossing	0	0	1	13	14	0	0	1	1
Sub-total	19	262	1942	3668	5891	20	298	2579	2897
MID BLOCK									
Crossover	0	0	3	0	3	0	0	4	4
Rail Crossing	0	0	9	12	21	0	0	13	13
Divided Road	9	90	748	1761	2608	9	104	918	1031
Not Divided	69	357	1145	2595	4166	72	408	1457	1937
One Way	1	2	12	17	32	1	2	13	16
Freeway	3	12	46	99	160	3	14	59	76
Ramp On	0	0	3	5	8	0	0	3	3
Ramp Off	0	0	0	12	12	0	0	0	0
Pedestrian Crossing	2	1	24	14	41	2	1	30	33
Other	7	5	5	5	22	7	6	8	21
Sub-total	91	467	1995	4520	7073	94	535	2505	3134
TOTAL	110	729	3937	8188	12964	114	833	5084	6031

Table 16a: Crashes and Casualties by Traffic Control and Severity:
Metropolitan Adelaide

Traffic Control	Crashes				Casualties				
	Fatal Crashes	Serious Injury Crashes	Minor Injury Crashes	Property Damage Crashes	ALL CRASHES	Fatalities	Serious Injuries	Minor Injuries	ALL CASUALTIES
INTERSECTION									
Traffic Signals	5	79	751	1332	2167	5	87	999	1091
Give Way Sign	1	38	203	415	657	1	47	289	337
Stop Sign	0	26	151	280	457	0	27	201	228
Roundabout	1	15	128	286	430	1	15	140	156
No Control	3	65	531	1032	1631	3	70	667	740
Sub-total	10	223	1764	3345	5342	10	246	2296	2552
MID BLOCK									
Traffic Signals	1	1	20	12	34	1	1	26	28
Stop Sign	1	0	0	0	1	1	0	0	1
Roundabout	0	1	2	1	4	0	1	2	3
No Control	37	279	1599	3752	5667	37	305	1958	2300
Rail Xing-Boom	0	0	4	4	8	0	0	7	7
Rail Xing-Flashing	0	0	1	0	1	0	0	1	1
Rail Xing-Traffic Signals	0	0	1	5	6	0	0	1	1
Other	0	0	2	2	4	0	0	3	3
Sub-total	39	281	1629	3776	5725	39	307	1998	2344
TOTAL	49	504	3393	7121	11067	49	553	4294	4896

Table 16b: Crashes and Casualties by Traffic Control and Severity:
Rural

Traffic Control	Crashes					Casualties			
	Fatal Crashes	Serious Injury Crashes	Minor Injury Crashes	Property Damage Crashes	ALL CRASHES	Fatalities	Serious Injuries	Minor Injuries	ALL CASUALTIES
INTERSECTION									
Traffic Signals	0	1	10	19	30	0	1	17	18
Give Way Sign	5	24	79	143	251	6	34	133	173
Stop Sign	1	2	19	26	48	1	3	37	41
Roundabout	0	2	15	33	50	0	2	19	21
No Control	3	10	55	101	169	3	12	77	92
Rail Xing-Boom	0	0	0	1	1	0	0	0	0
Sub-total	9	39	178	323	549	10	52	283	345
MID BLOCK									
Traffic Signals	0	0	0	1	1	0	0	0	0
No Control	52	186	363	739	1340	55	228	503	786
Rail Xing-Boom	0	0	0	1	1	0	0	0	0
Rail Xing-Flashing	0	0	3	2	5	0	0	4	4
Other	0	0	0	1	1	0	0	0	0
Sub-total	52	186	366	744	1348	55	228	507	790
TOTAL	61	225	544	1067	1897	65	280	790	1135

Table 16c: Crashes and Casualties by Traffic Control and Severity:
South Australia

Traffic Control	Crashes					Casualties			
	Fatal Crashes	Serious Injury Crashes	Minor Injury Crashes	Property Damage Crashes	ALL CRASHES	Fatalities	Serious Injuries	Minor Injuries	ALL CASUALTIES
Traffic Signals	5	80	761	1351	2197	5	88	1016	1109
Give Way Sign	6	62	282	558	908	7	81	422	510
Stop Sign	1	28	170	306	505	1	30	238	269
Roundabout	1	17	143	319	480	1	17	159	177
No Control	6	75	586	1133	1800	6	82	744	832
Rail Xing-Boom	0	0	0	1	1	0	0	0	0
Sub-total	19	262	1942	3668	5891	20	298	2579	2897
MID BLOCK									
Traffic Signals	1	1	20	13	35	1	1	26	28
Stop Sign	1	0	0	0	1	1	0	0	1
Roundabout	0	1	2	1	4	0	1	2	3
No Control	89	465	1962	4491	7007	92	533	2461	3086
Rail Xing-Boom	0	0	4	5	9	0	0	7	7
Rail Xing-Flashing	0	0	4	2	6	0	0	5	5
Rail Xing-Traffic Signals	0	0	1	5	6	0	0	1	1
Other	0	0	2	3	5	0	0	3	3
Sub-total	91	467	1995	4520	7073	94	535	2505	3134
TOTAL	110	729	3937	8188	12964	114	833	5084	6031

Table 17: Crashes and Casualties by Area Speed Limit, Region & Severity

Area Speed Limit	Crashes					Casualties			
	Fatal Crashes	Serious Injury Crashes	Minor Injury Crashes	Property Damage Crashes	ALL CRASHES	Fatalities	Serious Injuries	Minor Injuries	ALL CASUALTIES
METROPOLITAN									
<50km/h	5	16	70	201	292	5	16	80	101
50km/h	7	137	800	1987	2931	7	140	922	1069
60km/h	16	220	1918	3769	5923	16	236	2460	2712
70km/h	5	15	133	271	424	5	16	166	187
80km/h	8	84	334	573	999	8	106	483	597
90km/h	0	11	65	160	236	0	14	80	94
100km/h	5	12	51	96	164	5	14	75	94
110km/h	3	9	22	64	98	3	11	28	42
Sub-total	49	504	3393	7121	11067	49	553	4294	4896
RURAL									
<50km/h	1	3	7	19	30	1	3	9	13
50km/h	5	31	128	270	434	5	35	159	199
60km/h	1	15	64	133	213	1	18	82	101
70km/h	0	0	0	0	0	0	0	0	0
80km/h	3	20	49	100	172	3	24	73	100
90km/h	1	2	5	15	23	1	5	5	11
100km/h	16	82	168	310	576	17	96	265	378
110km/h	34	72	123	220	449	37	99	197	333
Sub-total	61	225	544	1067	1897	65	280	790	1135
TOTAL	110	729	3937	8188	12964	114	833	5084	6031

Table 18: Crashes and Casualties by Light Conditions, Region & Severity

Light Conditions[1] & Region	Crashes					Casualties			
	Fatal Crashes	Serious Injury Crashes	Minor Injury Crashes	Property Damage Crashes	ALL CRASHES	Fatalities	Serious Injuries	Minor Injuries	ALL CASUALTIES
METROPOLITAN									
Daylight	37	352	2712	5474	8575	37	380	3410	3827
Night	12	152	681	1647	2492	12	173	884	1069
Sub-total	49	504	3393	7121	11067	49	553	4294	4896
RURAL									
Daylight	41	164	410	740	1355	44	204	611	859
Night	20	61	134	327	542	21	76	179	276
Sub-total	61	225	544	1067	1897	65	280	790	1135
TOTAL	110	729	3937	8188	12964	114	833	5084	6031

Table 19: Crashes and Casualties by Vertical Alignment, Region & Severity

Vertical Alignment & Region	Crashes					Casualties			
	Fatal Crashes	Serious Injury Crashes	Minor Injury Crashes	Property Damage Crashes	ALL CRASHES	Fatalities	Serious Injuries	Minor Injuries	ALL CASUALTIES
METROPOLITAN									
Level	38	390	2911	6201	9540	38	432	3673	4143
Crest of Hill	2	9	50	69	130	2	11	66	79
Bottom of Hill	0	12	35	59	106	0	12	40	52
Slope	9	93	395	775	1272	9	98	513	620
Unknown	0	0	2	17	19	0	0	2	2
Sub-total	49	504	3393	7121	11067	49	553	4294	4896
RURAL									
Level	52	165	408	830	1455	56	212	597	865
Crest of Hill	2	16	22	35	75	2	21	33	56
Bottom of Hill	0	7	23	28	58	0	8	31	39
Slope	7	32	86	167	292	7	34	124	165
Unknown	0	5	5	7	17	0	5	5	10
Sub-total	61	225	544	1067	1897	65	280	790	1135
TOTAL	110	729	3937	8188	12964	114	833	5084	6031

Table 20: Crashes and Casualties by Horizontal Alignment, Region & Severity

Horizontal Alignment & Region	Crashes					Casualties			
	Fatal Crashes	Serious Injury Crashes	Minor Injury Crashes	Property Damage Crashes	ALL CRASHES	Fatalities	Serious Injuries	Minor Injuries	ALL CASUALTIES
METROPOLITAN									
Straight	42	419	3049	6386	9896	42	460	3865	4367
Curved, View Obscured	2	31	81	205	319	2	36	104	142
Curved, View Open	5	54	262	525	846	5	57	324	386
Unknown	0	0	1	5	6	0	0	1	1
Sub-total	49	504	3393	7121	11067	49	553	4294	4896
RURAL									
Straight	52	160	382	818	1412	54	203	582	839
Curved, View Obscured	0	24	52	80	156	0	27	63	90
Curved, View Open	9	41	110	169	329	11	50	145	206
Unknown	0	0	0	0	0	0	0	0	0
Sub-total	61	225	544	1067	1897	65	280	790	1135
TOTAL	110	729	3937	8188	12964	114	833	5084	6031

Table 21: Crashes and Casualties by Road Moisture, Region & Severity

Road Moisture & Region	Crashes					Casualties			
	Fatal Crashes	Serious Injury Crashes	Minor Injury Crashes	Property Damage Crashes	ALL CRASHES	Fatalities	Serious Injuries	Minor Injuries	ALL CASUALTIES
METROPOLITAN									
Dry	47	461	3055	6371	9934	47	504	3857	4408
Wet	2	42	336	737	1117	2	48	435	485
Unknown	0	1	2	13	16	0	1	2	3
Sub-total	49	504	3393	7121	11067	49	553	4294	4896
RURAL									
Dry	56	208	480	936	1680	60	262	721	1043
Wet	3	16	62	129	210	3	17	67	87
Unknown	2	1	2	2	7	2	1	2	5
Sub-total	61	225	544	1067	1897	65	280	790	1135
TOTAL	110	729	3937	8188	12964	114	833	5084	6031

Table 22: Crashes and Casualties by Route and Severity

Route	Crashes					Casualties			
	Fatal Crashes	Serious Injury Crashes	Minor Injury Crashes	Property Damage Crashes	ALL CRASHES	Fatalities	Serious Injuries	Minor Injuries	ALL CASUALTIES
Anzac Highway	0	4	48	85	137	0	4	56	60
Barrier Highway	0	5	6	11	22	0	5	13	18
Cudlee Creek - Lobethal Road	0	1	1	3	5	0	1	1	2
Dukes Highway	4	3	8	15	30	4	7	16	27
Eyre Highway	6	5	7	19	37	6	9	13	28
Gorge Road	0	2	18	30	50	0	2	26	28
Lincoln Highway	2	5	7	10	24	2	6	12	20
Lyndoch - Chain of Ponds Road	1	1	1	6	9	1	1	2	4
Lower North East Road	0	0	2	6	8	0	0	2	2
Horrocks Highway	1	4	9	10	24	1	4	12	17
Main North Road (M) ¹	2	21	179	366	568	2	26	230	258
North East Road	0	13	103	163	279	0	14	128	142
Main South Road	0	6	15	30	51	0	6	18	24
Port Wakefield Road	7	12	21	43	83	9	19	40	68
Princes Highway	2	8	16	31	57	2	11	25	38
Riddoch Highway	0	3	9	16	28	0	3	11	14
South Eastern Freeway ²	2	7	30	79	118	2	7	44	53
Southern Expressway	1	3	11	37	52	1	4	12	17
Stuart Highway	1	5	10	13	29	1	6	19	26
Sturt Highway	7	11	15	44	77	8	18	27	53
Tea Tree Gully - Mannum Road	1	8	9	18	36	1	8	15	24
Victor Harbor Road	3	4	15	30	52	3	5	28	36

M = Metropolitan Adelaide

¹ From Fitzroy Terrace to Gawler Bypass.

² Does not include the intersection with Cross Road

Table 23a: Crashes and Casualties by Local Government Area & Severity, Metropolitan Adelaide: Council Roads

Local Government Area	Crashes					Casualties			
	Fatal Crashes	Serious Injury Crashes	Minor Injury Crashes	Property Damage Crashes	ALL CRASHES	Fatalities	Serious Injuries	Minor Injuries	ALL CASUALTIES
City of Adelaide	2	17	45	63	127	2	17	53	72
Adelaide Hills Council	1	22	150	328	501	1	22	163	186
Adelaide Plains Council	0	0	5	9	14	0	0	8	8
The Barossa Council	0	0	1	0	1	0	0	1	1
City of Burnside	0	1	16	43	60	0	2	16	18
Campbelltown City Council	0	3	38	51	92	0	3	49	52
City of Charles Sturt	1	13	54	151	219	1	13	64	78
Town of Gawler	2	3	10	34	49	2	3	18	23
City of Holdfast Bay	0	5	27	67	99	0	5	27	32
Light Regional Council	0	1	4	5	10	0	1	6	7
City of Marion	1	6	40	131	178	1	6	45	52
City of Mitcham	0	6	34	88	128	0	6	41	47
Mount Barker District Council	0	4	29	40	73	0	5	38	43
City of Norwood Payneham & St Peters	0	2	21	41	64	0	2	23	25
City of Onkaparinga	1	27	99	246	373	1	32	122	155
City of Playford	4	21	103	206	334	4	21	129	154
City of Prospect	2	2	4	29	37	2	2	5	9
City of Port Adelaide Enfield	0	14	60	209	283	0	14	69	83
City of Salisbury	1	15	95	247	358	1	15	125	141
City of Tea Tree Gully	2	5	37	89	133	2	5	42	49
City of Unley	0	7	23	56	86	0	7	29	36
Town of Walkerville	0	2	5	17	24	0	2	5	7
City of West Torrens	1	7	45	110	163	1	8	52	61
Total	18	183	945	2260	3406	18	191	1130	1339

Table 23b: Crashes and Casualties by Local Government Area & Severity, Metropolitan Adelaide: Departmental Roads

Local Government Area	Crashes				Casualties				
	Fatal Crashes	Serious Injury Crashes	Minor Injury Crashes	Property Damage Crashes	ALL CRASHES	Fatalities	Serious Injuries	Minor Injuries	ALL CASUALTIES
City of Adelaide	2	29	79	186	296	2	29	117	148
Adelaide Hills Council	0	7	53	104	164	0	8	64	72
Adelaide Plains Council	0	2	7	4	13	0	3	13	16
The Barossa Council	0	0	2	2	4	0	0	4	4
City of Burnside	0	9	53	138	200	0	9	61	70
Campbelltown City Council	0	5	72	107	184	0	5	87	92
City of Charles Sturt	2	22	211	411	646	2	22	260	284
Town of Gawler	0	5	32	53	90	0	6	41	47
City of Holdfast Bay	0	11	38	106	155	0	11	46	57
Light Regional Council	3	0	10	17	30	3	0	14	17
City of Marion	2	20	151	310	483	2	23	202	227
City of Mitcham	1	15	154	297	467	1	16	191	208
Mount Barker District Council	2	10	39	85	136	2	11	62	75
City of Norwood Payneham & St Peters	1	9	154	285	449	1	10	185	196
City of Onkaparinga	4	33	159	274	470	4	42	210	256
City of Playford	2	25	135	248	410	2	35	198	235
City of Prospect	1	4	67	162	234	1	4	80	85
City of Port Adelaide Enfield	4	41	323	715	1083	4	43	416	463
City of Salisbury	5	28	285	557	875	5	32	371	408
City of Tea Tree Gully	1	13	123	186	323	1	17	169	187
City of Unley	0	8	77	155	240	0	8	95	103
Town of Walkerville	0	4	48	85	137	0	4	59	63
City of West Torrens	1	21	176	374	572	1	24	219	244
Total	31	321	2448	4861	7661	31	362	3164	3557

Table 23c: Crashes and Casualties by Local Government Area & Severity, Metropolitan Adelaide: All Roads

Local Government Area	Crashes					Casualties			
	Fatal Crashes	Serious Injury Crashes	Minor Injury Crashes	Property Damage Crashes	ALL CRASHES	Fatalities	Serious Injuries	Minor Injuries	ALL CASUALTIES
City of Adelaide	4	46	124	249	423	4	46	170	220
Adelaide Hills Council	1	29	203	432	665	1	30	227	258
Adelaide Plains Council	0	2	12	13	27	0	3	21	24
The Barossa Council	0	0	3	2	5	0	0	5	5
City of Burnside	0	10	69	181	260	0	11	77	88
Campbelltown City Council	0	8	110	158	276	0	8	136	144
City of Charles Sturt	3	35	265	562	865	3	35	324	362
Town of Gawler	2	8	42	87	139	2	9	59	70
City of Holdfast Bay	0	16	65	173	254	0	16	73	89
Light Regional Council	3	1	14	22	40	3	1	20	24
City of Marion	3	26	191	441	661	3	29	247	279
City of Mitcham	1	21	188	385	595	1	22	232	255
Mount Barker District Council	2	14	68	125	209	2	16	100	118
City of Norwood Payneham & St Peters	1	11	175	326	513	1	12	208	221
City of Onkaparinga	5	60	258	520	843	5	74	332	411
City of Playford	6	46	238	454	744	6	56	327	389
City of Prospect	3	6	71	191	271	3	6	85	94
City of Port Adelaide Enfield	4	55	383	924	1366	4	57	485	546
City of Salisbury	6	43	380	804	1233	6	47	496	549
City of Tea Tree Gully	3	18	160	275	456	3	22	211	236
City of Unley	0	15	100	211	326	0	15	124	139
Town of Walkerville	0	6	53	102	161	0	6	64	70
City of West Torrens	2	28	221	484	735	2	32	271	305
Total	49	504	3393	7121	11067	49	553	4294	4896

Table 24a: Crashes and Casualties by Local Government Area & Severity, Rural: Council Roads

Local Government Area	Crashes					Casualties			
	Fatal Crashes	Serious Injury Crashes	Minor Injury Crashes	Property Damage Crashes	ALL CRASHES	Fatalities	Serious Injuries	Minor Injuries	ALL CASUALTIES
Adelaide Plains Council	0	1	5	9	15	0	1	8	9
Alexandrina Council	2	11	25	32	70	2	15	30	47
Anangu Pitjantjatjara Yankunytjatjara	1	2	5	4	12	1	3	10	14
The Barossa Council	1	4	7	26	38	1	4	11	16
Barunga West Council	1	1	1	2	5	1	1	1	3
Berri Barmera Council	0	2	4	14	20	0	2	4	6
District Council of Ceduna	0	2	3	1	6	0	2	5	7
Clare and Gilbert Valleys Council	0	1	3	7	11	0	1	3	4
District Council of Cleve	0	0	0	1	1	0	0	0	0
District Council of Coober Pedy	0	1	1	1	3	0	2	1	3
Coorong District Council	1	0	1	5	7	1	0	1	2
Copper Coast Council	0	4	11	17	32	0	5	13	18
District Council of Elliston	0	0	0	1	1	0	0	0	0
The Flinders Ranges Council	0	0	1	0	1	0	0	1	1
District Council of Franklin Harbour	0	0	0	1	1	0	0	0	0
Regional Council of Goyder	0	1	0	5	6	0	1	2	3
District Council of Grant	0	4	7	13	24	0	4	10	14
Kangaroo Island Council	0	2	8	4	14	0	2	9	11
District Council of Karoonda East Murray	0	0	1	2	3	0	0	1	1
District Council of Kimba	0	0	0	1	1	0	0	0	0
Kingston District Council	1	1	0	0	2	1	2	0	3
Light Regional Council	0	2	7	12	21	0	3	8	11
District Council of Lower Eyre Peninsula	0	0	4	8	12	0	0	5	5
District Council of Loxton Waikerie	0	2	6	7	15	0	2	7	9
Mid Murray Council	0	5	7	15	27	0	6	8	14
Sub-total	7	46	107	188	348	7	56	138	201

Table 24a: Crashes and Casualties by Local Government Area & Severity, Rural: Council Roads (cont.)

Local Government Area	Crashes					Casualties			
	Fatal Crashes	Serious Injury Crashes	Minor Injury Crashes	Property Damage Crashes	ALL CRASHES	Fatalities	Serious Injuries	Minor Injuries	ALL CASUALTIES
City of Mount Gambier	2	3	15	41	61	2	4	18	24
District Council of Mount Remarkable	0	1	1	0	2	0	3	4	7
Rural City of Murray Bridge	0	3	10	28	41	0	4	10	14
Naracoorte Lucindale Council	1	2	4	12	19	1	2	4	7
Northern Areas Council	0	1	1	3	5	0	1	1	2
District Council of Orreroo Carrieton	0	0	0	1	1	0	0	0	0
Pastoral Unincorporated	0	2	1	0	3	0	2	2	4
District Council of Peterborough	0	0	0	0	0	0	0	0	0
Port Augusta City Council	1	0	5	12	18	1	0	7	8
City of Port Lincoln	0	0	3	13	16	0	0	3	3
Port Pirie Regional Council	0	2	12	25	39	0	3	20	23
Renmark Paringa Council	0	0	6	13	19	0	0	7	7
District Council of Robe	0	1	0	3	4	0	1	0	1
Municipal Council of Roxby Downs	0	1	0	1	2	0	1	0	1
Southern Mallee District Council	0	1	1	4	6	0	1	2	3
District Council of Streaky Bay	0	1	0	0	1	0	1	0	1
Tatiara District Council	0	4	7	10	21	0	4	9	13
District Council of Tumby Bay	0	2	1	2	5	0	2	1	3
City of Victor Harbor	0	6	8	13	27	0	8	11	19
Wakefield Regional Council	0	1	4	7	12	0	1	4	5
Wattle Range Council	0	2	8	12	22	0	2	8	10
City of Whyalla	0	5	14	31	50	0	5	20	25
Wudinna District Council	0	0	0	1	1	0	0	0	0
District Council of Yankalilla	1	0	9	12	22	1	0	9	10
Yorke Peninsula Council	0	4	7	22	33	0	4	14	18
Sub-total	5	42	117	266	430	5	49	154	208
TOTAL	12	88	224	454	778	12	105	292	409

Table 24b: Crashes and Casualties by Local Government Area & Severity, Rural: Departmental Roads

Local Government Area	Crashes					Casualties			
	Fatal Crashes	Serious Injury Crashes	Minor Injury Crashes	Property Damage Crashes	ALL CRASHES	Fatalities	Serious Injuries	Minor Injuries	ALL CASUALTIES
Adelaide Plains Council	3	3	7	14	27	3	7	12	22
Alexandrina Council	1	9	28	34	72	1	9	46	56
Anangu Pitjantjatjara Yankunytjatjara	0	0	0	1	1	0	0	0	0
The Barossa Council	0	3	20	49	72	0	3	28	31
Barunga West Council	1	1	2	3	7	1	1	4	6
Berri Barmera Council	1	2	7	13	23	1	5	11	17
District Council of Ceduna	1	2	0	3	6	1	3	3	7
Clare and Gilbert Valleys Council	1	5	5	12	23	1	5	6	12
District Council of Cleve	0	1	0	0	1	0	1	0	1
District Council of Coober Pedy	0	0	1	0	1	0	0	1	1
Coorong District Council	4	6	14	20	44	4	11	27	42
Copper Coast Council	1	1	8	12	22	1	1	8	10
District Council of Elliston	0	0	2	0	2	0	0	7	7
The Flinders Ranges Council	0	4	2	3	9	0	4	2	6
District Council of Franklin Harbour	1	3	1	1	6	1	3	2	6
Regional Council of Goyder	0	1	4	8	13	0	1	8	9
District Council of Grant	1	3	9	14	27	1	5	13	19
Kangaroo Island Council	0	0	2	6	8	0	0	2	2
District Council of Karoonda East Murray	1	0	1	2	4	1	0	1	2
District Council of Kimba	0	0	0	3	3	0	0	0	0
Kingston District Council	1	0	1	3	5	1	0	1	2
Light Regional Council	0	3	17	22	42	0	4	26	30
District Council of Lower Eyre Peninsula	1	1	2	4	8	1	1	2	4
District Council of Loxton Waikerie	2	6	11	25	44	2	7	15	24
Mid Murray Council	0	3	17	28	48	0	3	19	22
Sub-total	20	57	161	280	518	20	74	244	338

Table 24b: Crashes and Casualties by Local Government Area & Severity, Rural: Departmental Roads (cont.)

Local Government Area	Crashes				Casualties				
	Fatal Crashes	Serious Injury Crashes	Minor Injury Crashes	Property Damage Crashes	ALL CRASHES	Fatalities	Serious Injuries	Minor Injuries	ALL CASUALTIES
City of Mount Gambier	0	3	19	31	53	0	3	26	29
District Council of Mount Remarkable	0	1	3	3	7	0	2	4	6
Rural City of Murray Bridge	3	4	12	34	53	3	4	17	24
Naracoorte Lucindale Council	1	2	7	12	22	2	3	8	13
Northern Areas Council	0	1	2	5	8	0	1	4	5
District Council of Orreroo Carrieton	0	0	1	0	1	0	0	1	1
Pastoral Unincorporated	4	22	23	42	91	4	25	39	68
District Council of Peterborough	0	1	2	5	8	0	1	2	3
Port Augusta City Council	1	2	5	15	23	2	2	9	13
City of Port Lincoln	0	0	7	9	16	0	0	7	7
Port Pirie Regional Council	2	3	9	12	26	2	3	14	19
Renmark Paringa Council	0	1	4	15	20	0	2	6	8
District Council of Robe	0	1	6	3	10	0	2	8	10
Municipal Council of Roxby Downs	0	0	1	0	1	0	0	1	1
Southern Mallee District Council	1	3	2	5	11	1	3	2	6
District Council of Streaky Bay	3	2	1	4	10	3	4	3	10
Tatiara District Council	2	4	7	12	25	2	6	13	21
District Council of Tumby Bay	1	0	1	1	3	1	1	1	3
City of Victor Harbor	0	2	10	26	38	0	2	15	17
Wakefield Regional Council	2	6	10	25	43	3	7	22	32
Wattle Range Council	2	8	8	20	38	2	9	11	22
City of Whyalla	0	1	6	13	20	0	2	9	11
Wudinna District Council	0	0	1	2	3	0	0	2	2
District Council of Yankalilla	1	7	7	20	35	1	9	16	26
Yorke Peninsula Council	1	3	9	20	33	1	5	17	23
Sub-total	24	77	163	334	598	27	96	257	380
TOTAL	44	134	324	614	1116	47	170	501	718

Table 24c: Crashes and Casualties by Local Government Area & Severity, Rural: All Roads

Local Government Area	Crashes					Casualties			
	Fatal Crashes	Serious Injury Crashes	Minor Injury Crashes	Property Damage Crashes	ALL CRASHES	Fatalities	Serious Injuries	Minor Injuries	ALL CASUALTIES
Adelaide Plains Council	3	4	12	23	42	3	8	20	31
Alexandrina Council	3	20	53	66	142	3	24	76	103
Anangu Pitjantjatjara Yankunytjatjara	1	2	5	5	13	1	3	10	14
The Barossa Council	1	7	27	75	110	1	7	39	47
Barunga West Council	2	2	3	5	12	2	2	5	9
Berri Barmera Council	1	4	11	27	43	1	7	15	23
District Council of Ceduna	1	4	3	4	12	1	5	8	14
Clare and Gilbert Valleys Council	1	6	8	19	34	1	6	9	16
District Council of Cleve	0	1	0	1	2	0	1	0	1
District Council of Coober Pedy	0	1	2	1	4	0	2	2	4
Coorong District Council	5	6	15	25	51	5	11	28	44
Copper Coast Council	1	5	19	29	54	1	6	21	28
District Council of Elliston	0	0	2	1	3	0	0	7	7
The Flinders Ranges Council	0	4	3	3	10	0	4	3	7
District Council of Franklin Harbour	1	3	1	2	7	1	3	2	6
Regional Council of Goyder	0	2	4	13	19	0	2	10	12
District Council of Grant	1	7	16	27	51	1	9	23	33
Kangaroo Island Council	0	2	10	10	22	0	2	11	13
District Council of Karoonda East Murray	1	0	2	4	7	1	0	2	3
District Council of Kimba	0	0	0	4	4	0	0	0	0
Kingston District Council	2	1	1	3	7	2	2	1	5
Light Regional Council	0	5	24	34	63	0	7	34	41
District Council of Lower Eyre Peninsula	1	1	6	12	20	1	1	7	9
District Council of Loxton Waikerie	2	8	17	32	59	2	9	22	33
Mid Murray Council	5	11	20	42	78	6	14	24	44
Sub-total	32	106	264	467	869	33	135	379	547

Table 24c: Crashes and Casualties by Local Government Area & Severity, Rural: All Roads (cont.)

Local Government Area	Crashes					Casualties			
	Fatal Crashes	Serious Injury Crashes	Minor Injury Crashes	Property Damage Crashes	ALL CRASHES	Fatalities	Serious Injuries	Minor Injuries	ALL CASUALTIES
City of Mount Gambier	2	6	34	72	114	2	7	44	53
District Council of Mount Remarkable	0	2	4	3	9	0	5	8	13
Rural City of Murray Bridge	3	7	22	62	94	3	8	27	38
Naracoorte Lucindale Council	2	4	11	24	41	3	5	12	20
Northern Areas Council	0	2	3	8	13	0	2	5	7
District Council of Orroroo Carrieton	0	0	1	1	2	0	0	1	1
Pastoral Unincorporated	4	24	24	42	94	4	27	41	72
District Council of Peterborough	0	1	2	5	8	0	1	2	3
Port Augusta City Council	2	2	10	27	41	3	2	16	21
City of Port Lincoln	0	0	10	22	32	0	0	10	10
Port Pirie Regional Council	2	5	21	37	65	2	6	34	42
Renmark Paringa Council	0	1	10	28	39	0	2	13	15
District Council of Robe	0	2	6	6	14	0	3	8	11
Municipal Council of Roxby Downs	0	1	1	1	3	0	1	1	2
Southern Mallee District Council	1	4	3	9	17	1	4	4	9
District Council of Streaky Bay	3	3	1	4	11	3	5	3	11
Tatiara District Council	2	8	14	22	46	2	10	22	34
District Council of Tumby Bay	1	2	2	3	8	1	3	2	6
City of Victor Harbor	0	8	18	39	65	0	10	26	36
Wakefield Regional Council	2	7	14	32	55	3	8	26	37
Wattle Range Council	2	10	16	32	60	2	11	19	32
City of Whyalla	0	6	20	44	70	0	7	29	36
Wudinna District Council	0	0	1	3	4	0	0	2	2
District Council of Yankalilla	2	7	16	32	57	2	9	25	36
Yorke Peninsula Council	1	7	16	42	66	1	9	31	41
Sub-total	29	119	280	600	1028	32	145	411	588
TOTAL	61	225	544	1067	1897	65	280	790	1135

Table 25: Top Intersections with highest number of Casualty Crashes 2019

Intersection	Current Year	Previous Years			
	2019	2018	2017	2016	2015
STURT ROAD - MARION ROAD	9	11	8	6	5
MAIN NORTH ROAD - MONTAGUE ROAD	9	3	1	6	1
HANSON ROAD - GRAND JUNCTION ROAD	7	1	3	6	4
MARION ROAD - CROSS ROAD	7	6	6	5	4
THE GOLDEN WAY - THE GROVE WAY	7	1	4	3	8
WALKERVILLE TERRACE - PARK ROAD	7	1	1	1	2
GLYNBURN ROAD - MONTACUTE - ATHELSTONE ROAD	6	2	6	7	4
SOUTH ROAD / MAIN SOUTH ROAD - REGENCY ROAD	6	4	3	3	4
SOUTH ROAD / MAIN SOUTH ROAD - FURNESS AVENUE	6	2	2	3	3
REGENCY ROAD - MAIN NORTH ROAD	6	7	9	4	7
PORTRUSH ROAD - PAYNEHAM ROAD	6	2	5	7	6
MCINTYRE ROAD - BRIDGE ROAD	6	5	7	2	3
FULLARTON ROAD - MAGILL ROAD	6	1	3	5	6
FULLARTON ROAD - DEQUETTEVILLE TERRACE	6	11	7	8	13
FINDON ROAD - PORT ROAD	6	4	1	3	1
PEACHEY ROAD - CURTIS ROAD	6	5	8	5	3
FLINDERS DRIVE - SOUTH ROAD / MAIN SOUTH ROAD	5	2	1	2	3
ASHWIN PARADE - SOUTH ROAD / MAIN SOUTH ROAD	5	3	3	2	2
BOLIVAR ROAD - WATERLOO CORNER ROAD	5	2	4	3	4
CHURCHILL ROAD - REGENCY ROAD	5	3	11	3	6
DALKEITH ROAD - COVENTRY - MUNNO PARA ROAD	5	1	1	1	0
PEACHEY ROAD - WOMMA ROAD	5	1	0	4	0
WAR MEMORIAL - WEST DRIVE - MONTEFIORE ROAD	5	1	2	2	4
TAPLEYS HILL ROAD - OLD PORT ROAD	5	2	4	5	2
SUDHOLZ ROAD - NORTH EAST ROAD	5	1	2	4	1
STEPHEN TERRACE - NORTHCOTE TERRACE	5	2	2	0	11
STEBONHEATH - STH OF CURTIS ROAD - WOMMA ROAD	5	6	11	7	4
SOUTHERN EXPRESSWAY (SOUTH) - SOUTH ROAD / MAIN SOUTH ROAD	5	2	4	3	1
SOUTH ROAD / MAIN SOUTH ROAD - EVERARD AVENUE	5	2	1	2	3
SALISBURY HIGHWAY - KINGS ROAD	5	6	3	4	3
DAWS ROAD - SOUTH ROAD / MAIN SOUTH ROAD	5	3	5	6	5
PORTRUSH ROAD - KENSINGTON ROAD	5	7	5	2	2
EASTERN PARADE - ROSEWATER TERRACE	5	2	1	3	0
PANALATINGA RAMP TO ADELAIDE - SOUTH ROAD / MAIN SOUTH ROAD	5	2	3	5	5
MONTAGUE ROAD - MCINTYRE ROAD	5	2	7	4	4
MARION ROAD - HENLEY BEACH ROAD	5	6	5	4	4
MARION ROAD - ANZAC HIGHWAY	5	2	1	4	3
MAIN NORTH ROAD - PHILIP HIGHWAY	5	9	4	7	7
MAIN NORTH ROAD - MIDWAY ROAD	5	3	6	8	3
MAIN NORTH ROAD - KESTERS ROAD	5	2	5	4	0
GOODWOOD ROAD - CROSS ROAD	5	1	1	0	2
WEST LAKES BOULEVARD - PORT ROAD	5	5	2	4	3
PORTRUSH ROAD - MAGILL ROAD	5	4	4	2	5

Table 26: Motor Vehicles Involved in & Responsible for Crashes by Region and Severity

Vehicle Type & Region	Fatal Crashes		Serious Injury Crashes		Minor Injury Crashes		Property Damage Crashes		ALL CRASHES	
	Involved	Responsible	Involved	Responsible	Involved	Responsible	Involved	Responsible	Involved	Responsible
PASSENGER VEHICLES										
Metropolitan	42	22	575	310	5926	2932	11766	5810	18309	9074
Rural	54	40	203	147	663	429	1337	819	2257	1435
Sub-total	96	62	778	457	6589	3361	13103	6629	20566	10509
LIGHT TRUCKS (≤4.5 Tonnes)										
Metropolitan	2	2	1	1	21	18	53	32	77	53
Rural	0	0	1	1	2	2	4	1	7	4
Sub-total	2	2	2	2	23	20	57	33	84	57
HEAVY VEHICLE¹										
Metropolitan	4	2	21	9	112	64	1062	709	1199	784
Rural	24	9	21	5	33	21	137	88	215	123
Sub-total	28	11	42	14	145	85	1199	797	1414	907
BUSES										
Metropolitan	2	1	8	3	44	18	333	157	387	179
Rural	0	0	0	0	2	1	13	6	15	7
Sub-total	2	1	8	3	46	19	346	163	402	186
MOTORCYCLES										
Metropolitan	12	11	137	85	244	118	275	151	668	365
Rural	7	5	71	53	57	42	34	16	169	116
Sub-total	19	16	208	138	301	160	309	167	837	481
BICYCLISTS										
Metropolitan	6	2	97	43	367	109	266	71	736	225
Rural	3	0	4	2	21	7	15	4	43	13
Sub-total	9	2	101	45	388	116	281	75	779	238
OTHER										
Metropolitan	0	0	5	3	18	10	122	60	145	73
Rural	5	3	6	4	7	5	27	21	45	33
Sub-total	5	3	11	7	25	15	149	81	190	106
TOTAL										
Metropolitan	68	40	844	454	6732	3269	13877	6990	21521	10753
Rural	93	57	306	212	785	507	1567	955	2751	1731
TOTAL	161	97	1150	666	7517	3776	15444	7945	24272	12484

¹ Excludes Buses and other defined special vehicles

NOTE: Excludes data for crashes where responsibility not attributed to a road user. For example, responsibility not recorded or unriden animal responsible

Table 27: Crashes and Casualties by Vehicle Movement of Motor Vehicle Responsible and Severity (excl. Pedestrian)

Vehicle Movement of Unit Responsible	Crashes					Casualties			
	Fatal Crashes	Serious Injury Crashes	Minor Injury Crashes	Property Damage Crashes	ALL CRASHES	Fatalities	Serious Injuries	Minor Injuries	ALL CASUALTIES
Right Turn	4	97	722	1440	2263	5	106	1012	1123
Left Turn	3	26	239	453	721	3	28	269	300
U Turn	1	11	69	186	267	1	12	96	109
Swerving	4	21	160	678	863	4	21	183	208
Reversing	0	2	17	136	155	0	2	18	20
Stopped on Carriageway	0	0	6	9	15	0	0	6	6
Straight Ahead	73	451	2282	4460	7266	75	534	2982	3591
Entering Private Driveway	0	10	60	85	155	0	11	79	90
Leaving Private Driveway	2	18	130	262	412	2	19	155	176
Parked	1	6	23	25	55	1	6	24	31
Parking - Angle	1	0	5	5	11	1	0	6	7
Parking - Parallel	0	5	9	22	36	0	5	9	14
Unparking - Angle	2	1	6	16	25	2	1	6	9
UnParking - Parallel	0	3	20	76	99	0	3	24	27
Overtaking - on Right	5	14	22	71	112	6	19	39	64
Overtaking - on Left	1	1	5	20	27	1	1	6	8
Other	0	0	1	1	2	0	0	1	1
On Pedestrian Crossing	0	0	0	0	0	0	0	0	0
TOTAL	97	666	3776	7945	12484	101	768	4915	5784

NOTE: Excludes data for crashes where responsibility not attributed to a road user. For example, responsibility not recorded or unriden animal responsible

Table 28: Crashes and Casualties by Pedestrian Responsible, Movement and Severity

Pedestrian Movement	Crashes					Casualties			
	Fatal Crashes	Serious Injury Crashes	Minor Injury Crashes	Property Damage Crashes	ALL CRASHES	Fatalities	Serious Injuries	Minor Injuries	ALL CASUALTIES
Walking on Footpath	0	0	1	0	1	0	0	1	1
On Pedestrian Crossing	1	0	0	1	2	1	0	0	1
Within 30m of Pedestrian Crossing	1	0	0	1	2	1	0	0	1
Alighted from Parked Vehicle	1	1	2	1	5	1	1	2	4
Walking on Road	1	4	17	9	31	1	4	17	22
Walking on Road - Against the Traffic	0	0	0	1	1	0	0	0	0
Pushing or Working on Vehicle	0	1	3	0	4	0	1	3	4
Playing on Roadway	0	0	0	1	1	0	0	0	0
Crossing without Control	9	35	72	42	158	9	37	74	120
Other (e.g. Police on Traffic Control)	0	1	1	0	2	0	1	1	2
Crossing with Traffic Signals	0	4	10	7	21	0	4	10	14
TOTAL	13	46	106	63	228	13	48	108	169

Table 29: Crashes by Motor Vehicle Type Involved¹ and Severity

Type of Vehicle ¹	Fatal Crashes	Serious Injury Crashes	Minor Injury Crashes	Property Damage Crashes	ALL CRASHES
Passenger Vehicle	81	554	3706	7868	12209
Light Truck (<= 4.5Tonnes)	2	2	23	57	84
Heavy Truck	28	51	156	1298	1533
Buses	2	8	46	344	400
Motorcycles / Scooters	18	199	294	303	814
Bicycles	8	95	375	279	757
Pedestrian	21	79	212	143	455
Other	0	1	7	9	17

Table 30: Crashes and Casualties by Speed Involvement² and Severity

Speed Involvement ² & Region	Crashes					Casualties			
	Fatal Crashes	Serious Injury Crashes	Minor Injury Crashes	Property Damage Crashes	ALL CRASHES	Fatalities	Serious Injuries	Minor Injuries	ALL CASUALTIES
METROPOLITAN									
Yes	21	101	261	561	944	21	115	337	473
No	28	403	3132	6560	10123	28	438	3957	4423
Sub-total	49	504	3393	7121	11067	49	553	4294	4896
RURAL									
Yes	13	70	139	181	403	14	84	180	278
No	48	155	405	886	1494	51	196	610	857
Sub-total	61	225	544	1067	1897	65	280	790	1135
TOTAL	110	729	3937	8188	12964	114	833	5084	6031

¹ The vehicle type categories are not mutually exclusive and must not be added together. It is where the crash has involved at least one of the vehicle types. Where one crash has involved two or more of the same vehicle type, then it has been counted once

² Speed contribution definition is located under *Definitions & Explanations*

ROAD CASUALTIES IN 2019

Road Users
Seatbelts & Helmets
Age & Sex Distribution
Alcohol
Drug
Licence
Involvement & Responsibility

Table 31: Casualties by Road User Type, Severity, Age and Sex

Road User Types	Sex	0-15			16-19			20-24			25-29			30-39			40-49			50-59			60-69			70+			Unknown			ALL CASUALTIES		
		F	SI	MI	F	SI	MI	F	SI	MI	F	SI	MI	F	SI	MI	F	SI	MI	F	SI	MI	F	SI	MI	F	SI	MI	F	SI	MI			
VEHICLE OCCUPANT																																		
Driver	M	0	0	0	3	17	99	5	21	155	3	24	115	10	38	260	5	22	219	4	30	210	3	32	145	15	32	167	0	0	1	48	216	1371
	F	0	0	0	1	9	125	0	22	229	0	14	207	1	17	351	3	16	283	3	14	243	0	13	170	4	28	140	0	0	2	12	133	1750
	Sub-total	0	0	0	4	26	224	5	43	384	3	38	322	11	55	611	8	38	502	7	44	453	3	45	315	19	60	307	0	0	4	60	349	3122
Passenger	M	0	5	138	1	3	33	0	4	42	1	4	20	0	7	22	0	3	25	0	2	36	0	1	12	1	7	19	0	4	22	3	40	369
	F	0	4	166	1	4	63	2	8	52	0	4	50	0	9	70	1	4	60	0	11	57	1	7	51	1	15	74	0	2	24	6	68	667
	Sub-total	0	9	305	2	7	96	2	12	94	1	8	70	0	16	92	1	7	85	0	13	93	1	8	63	2	22	93	0	6	57	9	108	1048
MOTORCYCLIST																																		
Rider	M	0	1	0	3	23	52	2	24	49	2	23	28	5	33	44	2	23	28	2	29	40	0	24	22	1	6	2	0	0	1	17	186	266
	F	0	0	0	0	1	4	0	3	10	0	0	3	0	2	3	0	0	2	0	2	4	0	2	2	0	0	0	0	0	0	0	10	28
	Sub-total	0	1	0	3	24	56	2	27	59	2	23	31	5	35	47	2	23	30	2	31	44	0	26	24	1	6	2	0	0	1	17	196	294
Pillion Passenger	M	0	1	0	0	0	0	0	0	1	0	0	1	0	0	0	0	0	0	0	0	0	0	0	0	0	0	0	0	0	0	0	1	3
	F	0	0	0	0	0	1	0	0	2	0	3	0	0	0	0	0	0	2	0	0	2	0	0	0	0	1	0	0	0	0	0	4	7
	Sub-total	0	1	0	0	0	1	0	0	3	0	3	1	0	0	1	0	0	2	0	0	2	0	0	0	0	1	0	0	0	0	0	5	10
PEDESTRIAN																																		
M	M	0	9	20	0	2	8	3	3	8	0	2	11	1	2	19	2	2	10	1	5	10	1	9	9	4	10	20	0	1	4	12	45	119
	F	3	9	13	0	1	5	0	3	8	0	1	10	1	7	14	1	0	17	1	2	8	0	5	6	3	6	15	0	1	2	9	35	98
	Sub-total	3	18	33	0	3	13	3	6	16	0	3	21	2	9	33	3	2	27	2	7	18	1	14	15	7	16	35	0	2	9	21	80	220
BICYCLIST																																		
M	M	0	3	20	0	4	8	0	5	22	0	3	26	1	11	53	1	21	67	2	21	49	2	9	35	0	3	8	0	1	8	6	81	296
	F	0	0	3	0	0	7	0	1	10	0	1	12	1	2	16	0	1	18	0	6	14	0	1	4	0	1	1	0	0	1	1	13	86
	Sub-total	0	3	23	0	4	15	0	6	32	0	4	38	2	13	69	1	22	85	2	27	63	2	10	39	0	4	9	0	1	10	7	94	383
OTHER ROAD USER																																		
M	M	0	0	0	0	0	0	0	0	1	0	0	1	0	0	0	0	1	0	0	0	0	1	0	0	0	0	0	0	0	0	0	1	3
	F	0	0	1	0	0	0	0	0	0	0	0	0	0	0	2	0	0	0	0	0	0	1	0	0	0	0	0	0	0	0	0	0	4
	Sub-total	0	0	1	0	0	0	0	0	1	0	0	1	0	0	2	0	1	0	0	0	0	2	0	0	0	0	0	0	0	0	0	1	7
ALL ROAD USERS																																		
M	M	0	19	178	7	49	200	10	57	278	6	56	202	17	91	399	10	72	349	9	87	346	6	75	223	21	58	216	0	6	36	86	570	2427
	F	3	13	183	2	15	205	2	37	311	0	23	282	3	37	456	5	21	382	4	35	329	1	28	233	8	51	230	0	3	29	28	263	2640
	TOTAL	3	32	362	9	64	405	12	94	589	6	79	484	20	128	855	15	93	731	13	122	675	7	103	456	29	109	446	0	9	81	114	833	5084

F – Fatality, SI – Serious Injury, MI – Minor Injury

Table 32: Casualties by Unit Type and Severity

Unit Type	Fatalities	Serious Injuries	Minor Injuries	ALL CASUALTIES
Passenger Vehicle	58	439	4101	4598
Light Truck (≤4.5Tonnes)	1	1	6	8
Heavy Vehicle ¹	10	14	51	75
Bus	0	3	12	15
Motorcycle	17	201	304	522
Bicycle	7	94	383	484
Pedestrian	21	80	220	321
Other	0	1	7	8
TOTAL	114	833	5084	6031

Table 33: Motor Vehicle Casualties by Position in Vehicle and Severity (excl. Bicycles)

Position in Vehicle	Fatalities	Serious Injuries	Minor Injuries	ALL CASUALTIES
FRONT SEAT PASSENGER				
Driver	60	349	3122	3531
Middle	0	0	2	2
Left	9	76	633	718
REAR SEAT PASSENGER				
Right	0	10	134	144
Middle	0	2	42	44
Left	0	12	178	190
CHILD NURSED				
Front	0	0	0	0
Rear	0	0	0	0
UTILITY/TRUCK				
Rear	0	1	0	1
VAN				
Passenger	0	0	0	0
BUS				
Passenger	0	3	10	13
MOTORCYCLE				
Rider	17	196	294	507
Passenger	0	5	10	15
TOWED VEHICLE				
Occupant	0	1	2	3
UNKNOWN/OTHER				
	0	3	48	51
Sub-total	86	658	4475	5219
TOTAL²	114	833	5084	6031

¹ Excludes Buses

² Includes not applicable user types

Table 34: Casualties by Road User Type, Safety Device and Severity

Road User Type & Safety Device Use ¹	Fatalities	Serious Injuries	Minor Injuries	ALL CASUALTIES
DRIVER				
Fitted – Worn	38	289	2923	3249
Fitted – Not Worn	12	10	23	45
Fitted – Unknown if Worn	10	49	172	231
Not Fitted	0	0	3	3
Unknown	0	1	1	2
Sub-total	60	349	3122	3530
PASSENGER				
Fitted – Worn	5	82	893	980
Fitted – Not Worn	4	9	15	28
Fitted – Unknown if Worn	0	13	64	77
Child Restraint – Worn	0	0	62	62
Child Restraint– Not Worn	0	0	2	2
Not Fitted	0	3	8	11
Not Applicable	0	1	3	4
Unknown	0	0	1	1
Sub-total	9	108	1048	1165
MOTORCYCLE RIDER/PASSENGER				
Helmet Worn	16	192	293	501
Helmet – Not Worn	1	2	3	6
Unknown	0	7	8	15
Sub-total	17	201	304	522
BICYCLIST RIDER/PASSENGER				
Helmet Worn	7	89	357	453
Helmet – Not Worn	0	4	12	16
Unknown	0	1	14	15
Sub-total	7	94	383	484
ALL CASUALTIES				
Device Worn	66	653	4532	5251
Device Not Worn	17	28	67	112
Unknown/Not Applicable	10	72	265	347
Sub-total	93	753	4864	5710
TOTAL²	114	833	5084	6031

¹ Police reporting of safety device usage is often not based on direct observation by police officers and may be reliant upon statements by the casualties themselves or other involved parties.

² Includes not applicable safety device use/users (pedestrians)

Table 35: Driver and Motorcycle Rider Casualties with BAC

Severity	Sex	Blood Alcohol Concentration						Not Tested/ Unknown	TOTAL
		Negative	0.001- 0.049	0.050- 0.079	0.080- 0.149	0.150- 0.199	.200+		
Minor Injury	M	1005	10	4	30	22	9	557	1637
	F	998	4	2	12	7	6	749	1778
	Sub-total¹	2003	14	6	42	29	15	1307	3416
Serious Injury	M	300	8	1	18	11	3	61	402
	F	112	1	2	1	4	0	23	143
	Sub-total¹	412	9	3	19	15	3	84	545
Fatalities	M	53	1	1	0	3	5	2	65
	F	8	3	0	0	1	0	0	12
	Sub-total¹	61	4	1	0	4	5	2	77
ALL CASUALTIES	M	1305	18	5	48	33	12	618	2039
	F	1110	5	4	13	11	6	772	1921
	TOTAL¹	2476	27	10	61	48	23	1393	4038

Table 36: Driver and Motorcycle Rider Casualties with Drugs

Age	Sex	Drugs					Not Tested/ Unknown	TOTAL
		Negative	THC	MDMA	Meth	Combination of drugs ²		
Minor Injury	M	930	55	6	36	16	594	1637
	F	965	24	3	17	6	763	1778
	Sub-total¹	1895	79	9	53	22	1358	3416
Serious Injury	M	258	30	0	26	10	78	402
	F	103	7	0	6	1	26	143
	Sub-total¹	361	37	0	32	11	104	545
Fatalities	M	50	6	1	3	3	2	65
	F	12	0	0	0	0	0	12
	Sub-total¹	62	6	1	3	3	2	77
ALL CASUALTIES	M	1240	91	7	65	29	672	2104
	F	1080	31	3	23	7	789	1933
	TOTAL¹	2320	122	10	88	36	1462	4038

¹ Unknown sex included

² Two or more of THC, MDMA or Meth

Table 37a: Road User Involved in & Responsible for Crashes by Age & Sex:
Fatal Crashes

Age	Sex	Drivers		Motorcycle Riders		Bicycle Riders		Pedestrians		Other Road Users		ALL ROAD USERS	
		Involved	Responsible	Involved	Responsible	Involved	Responsible	Involved	Responsible	Involved	Responsible	Involved	Responsible
0-15	M	0	0	0	0	1	0	0	0	0	0	1	0
	F	0	0	0	0	0	0	4	1	0	0	4	1
	Sub-total¹	0	0	0	0	1	0	4	1	0	0	5	1
16-19	M	8	5	3	3	0	0	0	0	0	0	11	8
	F	1	1	0	0	0	0	0	0	0	0	1	1
	Sub-total¹	9	6	3	3	0	0	0	0	0	0	12	9
20-24	M	14	8	2	1	0	0	3	3	0	0	19	12
	F	2	0	0	0	0	0	0	0	0	0	2	0
	Sub-total¹	16	8	2	1	0	0	3	3	0	0	21	12
25-29	M	8	6	2	2	0	0	1	0	0	0	11	8
	F	0	0	0	0	0	0	0	0	0	0	0	0
	Sub-total¹	8	6	2	2	0	0	1	0	0	0	11	8
30-39	M	17	14	6	5	0	0	1	1	0	0	24	20
	F	2	1	0	0	1	1	1	0	0	0	4	2
	Sub-total¹	19	15	6	5	1	1	2	1	0	0	28	22
40-49	M	10	5	2	2	2	0	2	0	0	0	16	7
	F	6	3	0	0	0	0	1	1	0	0	7	4
	Sub-total¹	16	8	2	2	2	0	3	1	0	0	23	11
50-59	M	24	10	3	2	2	0	2	2	0	0	31	14
	F	3	2	0	0	0	0	1	0	0	0	4	2
	Sub-total¹	27	12	3	2	2	0	3	2	0	0	35	16
60-69	M	9	3	0	0	2	0	1	0	0	0	12	3
	F	1	0	0	0	0	0	0	0	0	0	1	0
	Sub-total¹	10	3	0	0	2	0	1	0	0	0	13	3
70+	M	20	16	1	1	0	0	4	3	0	0	25	20
	F	4	4	0	0	0	0	3	2	0	0	7	6
	Sub-total¹	24	20	1	1	0	0	7	5	0	0	32	26
Unknown	M	0	0	0	0	0	0	0	0	0	0	0	0
	F	0	0	0	0	0	0	0	0	0	0	0	0
	Sub-total¹	1	0	0	0	0	0	0	0	0	0	1	0
ALL AGES	M	110	67	19	16	7	0	14	9	0	0	150	92
	F	19	11	0	0	1	1	10	4	0	0	30	16
	TOTAL¹	130	78	19	16	8	1	24	13	0	0	181	108

¹ Unknown sex included

Table 37b: Road User Involved in & Responsible for Crashes by Age & Sex:
Serious Injury Crashes

Age	Sex	Drivers		Motorcycle Riders		Bicycle Riders		Pedestrians		Other Road Users		ALL ROAD USERS	
		Involved	Responsible	Involved	Responsible	Involved	Responsible	Involved	Responsible	Involved	Responsible	Involved	Responsible
0-15	M	0	0	2	1	2	1	10	8	0	1	14	11
	F	0	0	0	0	0	0	8	4	0	1	8	5
	Sub-total¹	0	0	2	1	2	1	18	12	0	2	22	16
16-19	M	31	25	25	14	5	1	2	2	0	0	63	42
	F	21	12	1	0	0	0	1	1	0	0	23	13
	Sub-total¹	52	37	26	14	5	1	3	3	0	0	86	55
20-24	M	51	32	26	19	6	3	4	3	0	0	87	57
	F	37	23	3	3	2	1	3	2	0	0	45	29
	Sub-total¹	88	55	29	22	8	4	7	5	0	0	132	86
25-29	M	59	39	24	14	5	3	2	2	0	0	90	58
	F	25	12	0	0	1	1	2	1	0	0	28	14
	Sub-total¹	84	51	24	14	6	4	4	3	0	0	118	72
30-39	M	89	58	35	24	10	5	3	2	0	0	137	89
	F	44	18	2	2	2	0	8	2	0	0	56	22
	Sub-total¹	133	76	37	26	12	5	11	4	0	0	193	111
40-49	M	78	39	27	16	22	6	2	2	0	0	129	63
	F	42	20	0	0	1	1	0	0	0	0	43	21
	Sub-total¹	120	59	27	16	23	7	2	2	0	0	172	84
50-59	M	69	41	28	18	20	9	4	3	0	0	121	71
	F	40	19	2	2	6	3	2	1	0	0	50	25
	Sub-total¹	109	60	30	20	26	12	6	4	0	0	171	96
60-69	M	67	43	24	17	9	5	9	2	0	0	109	67
	F	26	18	2	2	1	0	5	2	0	0	34	22
	Sub-total¹	93	61	26	19	10	5	14	4	0	0	143	89
70+	M	52	35	6	6	3	1	11	5	0	0	72	47
	F	40	28	0	0	1	1	6	3	0	0	47	32
	Sub-total¹	92	63	6	6	4	2	17	8	0	0	119	79
Unknown	M	0	0	0	0	1	1	1	1	0	0	2	2
	F	0	0	0	0	0	0	1	0	0	0	1	0
	Sub-total¹	32	19	0	0	1	1	2	1	0	0	35	21
ALL AGES	M	496	312	197	129	83	35	48	30	0	1	824	507
	F	275	150	10	9	14	7	36	16	0	1	335	183
	TOTAL¹	803	481	207	138	97	42	84	46	0	2	1191	709

¹ Unknown sex included

Table 37c: Road User Involved in & Responsible for Crashes by Age & Sex:
Minor Injury Crashes

Age	Sex	Drivers		Motorcycle Riders		Bicycle Riders		Pedestrians		Other Road Users		ALL ROAD USERS	
		Involved	Responsible	Involved	Responsible	Involved	Responsible	Involved	Responsible	Involved	Responsible	Involved	Responsible
0-15	M	0	0	0	0	20	8	20	14	0	1	40	23
	F	0	0	0	0	3	1	13	8	1	1	17	10
	Sub-total¹	0	0	0	0	23	9	33	22	1	2	57	33
16-19	M	205	148	53	39	7	2	8	8	0	1	273	198
	F	212	128	5	2	7	4	5	4	0	0	229	138
	Sub-total¹	417	276	58	41	14	6	13	12	0	1	502	336
20-24	M	422	270	48	25	21	7	8	4	0	0	499	306
	F	353	187	10	7	9	3	9	6	0	0	381	203
	Sub-total¹	775	457	58	32	30	10	17	10	0	0	880	509
25-29	M	356	229	29	17	25	7	10	5	0	0	420	258
	F	360	179	3	0	12	4	9	4	0	0	384	187
	Sub-total¹	716	408	32	17	37	11	19	9	0	0	804	445
30-39	M	678	347	42	19	54	8	19	12	0	0	793	386
	F	599	266	3	0	16	4	14	3	0	0	632	273
	Sub-total¹	1277	613	45	19	70	12	33	15	0	0	1425	659
40-49	M	540	237	27	16	67	17	11	6	0	0	645	276
	F	480	179	2	0	19	4	17	6	0	0	518	189
	Sub-total¹	1021	416	29	16	86	21	28	12	0	0	1164	465
50-59	M	512	253	42	17	49	15	10	3	0	0	613	288
	F	411	149	4	2	14	4	8	3	0	0	437	158
	Sub-total¹	924	403	46	19	63	19	18	6	0	0	1051	447
60-69	M	354	172	23	12	35	12	10	2	0	0	422	198
	F	282	134	2	0	4	4	6	4	0	0	294	142
	Sub-total¹	636	306	25	12	39	16	16	6	0	0	716	340
70+	M	313	221	3	1	8	4	19	4	0	0	343	230
	F	197	125	0	0	1	0	15	4	0	0	213	129
	Sub-total¹	510	346	3	1	9	4	34	8	0	0	556	359
Unknown	M	8	2	1	1	7	2	4	3	0	1	20	9
	F	7	5	0	0	1	0	2	2	0	0	10	7
	Sub-total¹	156	266	4	3	11	4	9	6	0	1	180	280
ALL AGES	M	3388	1879	268	147	293	82	119	61	0	3	4068	2172
	F	2901	1352	29	11	86	28	98	44	1	1	3115	1436
	TOTAL¹	6432	3491	300	160	382	112	220	106	1	4	7335	3873

¹ Unknown sex included

Table 37d: Road User Involved in & Responsible for Crashes by Age & Sex:
Property Damage Crashes

Age	Sex	Drivers		Motorcycle Riders		Bicycle Riders		Pedestrians		Other Road Users		ALL ROAD USERS	
		Involved	Responsible	Involved	Responsible	Involved	Responsible	Involved	Responsible	Involved	Responsible	Involved	Responsible
0-15	M	2	2	0	0	17	9	7	2	0	0	26	13
	F	0	0	0	0	2	0	12	4	0	2	14	6
	Sub-total¹	3	2	0	0	20	10	20	7	0	2	43	21
16-19	M	573	414	24	12	7	3	3	3	0	0	607	432
	F	353	229	1	0	2	0	1	1	0	0	357	230
	Sub-total¹	926	643	25	12	9	3	4	4	0	0	964	662
20-24	M	1048	651	40	24	11	1	5	1	0	0	1104	677
	F	715	431	4	4	6	0	3	1	0	0	728	436
	Sub-total¹	1764	1083	44	28	17	1	8	2	0	0	1833	1114
25-29	M	994	561	18	12	18	3	6	4	0	1	1036	581
	F	542	300	3	2	5	0	1	0	0	0	551	302
	Sub-total¹	1537	862	21	14	23	3	7	4	0	1	1588	884
30-39	M	1663	861	46	19	27	4	4	0	2	0	1742	884
	F	934	450	3	2	6	2	5	1	0	0	948	455
	Sub-total¹	2597	1311	49	21	33	6	9	1	2	0	2690	1339
40-49	M	1296	656	34	17	35	5	6	3	1	0	1372	681
	F	774	309	4	3	4	0	3	1	0	0	785	313
	Sub-total¹	2071	965	38	20	39	5	9	4	1	0	2158	994
50-59	M	1195	601	33	16	31	4	4	0	1	1	1264	622
	F	632	275	4	2	3	1	3	0	0	0	642	278
	Sub-total¹	1828	876	37	18	34	5	7	0	1	1	1907	900
60-69	M	809	419	14	7	13	3	5	2	1	0	842	431
	F	427	190	0	0	0	0	3	0	0	0	430	190
	Sub-total¹	1236	609	14	7	13	3	8	2	1	0	1272	621
70+	M	552	322	3	1	4	2	5	1	0	0	564	326
	F	357	232	0	0	2	0	2	0	0	0	361	232
	Sub-total¹	910	555	3	1	6	2	7	1	0	0	926	559
Unknown	M	56	31	5	5	6	3	12	9	0	0	79	48
	F	19	12	0	0	1	0	3	2	0	0	23	14
	Sub-total¹	1148	767	58	46	84	37	70	38	1	1	1361	889
ALL AGES	M	8188	4518	217	113	169	37	57	25	5	2	8636	4695
	F	4753	2428	19	13	31	3	36	10	0	2	4839	2456
	TOTAL¹	14020	7673	289	167	278	75	149	63	6	5	14742	7983

¹ Unknown sex included

Table 37e: Road User Involved in & Responsible for Crashes by Age & Sex:
All Crashes

Age	Sex	Drivers		Motorcycle Riders		Bicycle Riders		Pedestrians		Other Road Users		ALL ROAD USERS	
		Involved	Responsible	Involved	Responsible	Involved	Responsible	Involved	Responsible	Involved	Responsible	Involved	Responsible
0-15	M	2	2	2	1	40	18	37	24	0	2	81	47
	F	0	0	0	0	5	1	37	17	1	4	43	22
	Sub-total¹	3	2	2	1	46	20	75	42	1	6	127	71
16-19	M	817	592	105	68	19	6	13	13	0	1	954	680
	F	587	370	7	2	9	4	7	6	0	0	610	382
	Sub-total¹	1404	962	112	70	28	10	20	19	0	1	1564	1062
20-24	M	1535	961	116	69	38	11	20	11	0	0	1709	1052
	F	1107	641	17	14	17	4	15	9	0	0	1156	668
	Sub-total¹	2643	1603	133	83	55	15	35	20	0	0	2866	1721
25-29	M	1417	835	73	45	48	13	19	11	0	1	1557	905
	F	927	491	6	2	18	5	12	5	0	0	963	503
	Sub-total¹	2345	1327	79	47	66	18	31	16	0	1	2521	1409
30-39	M	2447	1280	129	67	91	17	27	15	2	0	2696	1379
	F	1579	735	8	4	25	7	28	6	0	0	1640	752
	Sub-total¹	4026	2015	137	71	116	24	55	21	2	0	4336	2131
40-49	M	1924	937	90	51	126	28	21	11	1	0	2162	1027
	F	1302	511	6	3	24	5	21	8	0	0	1353	527
	Sub-total¹	3228	1448	96	54	150	33	42	19	1	0	3517	1554
50-59	M	1800	905	106	53	102	28	20	8	1	1	2029	995
	F	1086	445	10	6	23	8	14	4	0	0	1133	463
	Sub-total¹	2888	1351	116	59	125	36	34	12	1	1	3164	1459
60-69	M	1239	637	61	36	59	20	25	6	1	0	1385	699
	F	736	342	4	2	5	4	14	6	0	0	759	354
	Sub-total¹	1975	979	65	38	64	24	39	12	1	0	2144	1053
70+	M	937	594	13	9	15	7	39	13	0	0	1004	623
	F	598	389	0	0	4	1	26	9	0	0	628	399
	Sub-total¹	1536	984	13	9	19	8	65	22	0	0	1633	1023
Unknown	M	64	33	6	6	14	6	17	13	0	1	101	59
	F	26	17	0	0	2	0	6	4	0	0	34	21
	Sub-total¹	1337	1052	62	49	96	42	81	45	1	2	1577	1190
ALL AGES	M	12182	6776	701	405	552	154	238	125	5	6	13678	7466
	F	7948	3941	58	33	132	39	180	74	1	4	8319	4091
	TOTAL¹	21385	11723	815	481	765	230	477	228	7	11	23449	12673

¹ Unknown sex included

Table 38: Drivers & Motorcycle Riders Involved in & Responsible for Crashes by Licence Type & Severity

Licence Type	Fatal Crashes		Serious Injury Crashes		Minor Injury Crashes		Property Damage Crashes		ALL CRASHES	
	Involved	Responsible	Involved	Responsible	Involved	Responsible	Involved	Responsible	Involved	Responsible
Learner's Permit	3	3	43	29	104	68	147	93	297	193
Probationary Licence	1	1	5	4	38	30	65	36	109	71
Full Licence	121	73	741	428	5519	2677	10907	5517	17288	8695
Unlicensed	12	10	60	46	119	89	291	214	482	359
Conditional Licence	0	0	0	0	0	0	1	1	1	1
Provisional 1 Licence	3	2	37	26	282	190	620	464	942	682
Provisional 2 Licence	8	5	73	53	457	288	963	611	1501	957
Disqualified Licence	0	0	1	1	2	2	20	18	23	21
Unknown	1	0	50	32	411	307	1295	886	1757	1225
TOTAL	149	94	1010	619	6932	3651	14309	7840	22400	12204

Table 39a: Drivers & Motorcycle Riders Responsible for Crashes by Licence Type and Age: Fatal Crashes

Age Group	Learner's Permit	Probationary Licence	Full Licence	Unlicensed	Conditional Licence	P1 Licence	P2 Licence	Disqualified	Unknown	TOTAL
0-15	0	0	0	0	0	0	0	0	0	0
16-19	2	0	0	1	0	2	4	0	0	9
20-24	0	0	6	2	0	0	1	0	0	9
25-29	1	0	7	0	0	0	0	0	0	8
30-39	0	0	16	4	0	0	0	0	0	20
40-49	0	1	9	0	0	0	0	0	0	10
50-59	0	0	12	2	0	0	0	0	0	14
60-69	0	0	2	1	0	0	0	0	0	3
70+	0	0	21	0	0	0	0	0	0	21
Unknown	0	0	0	0	0	0	0	0	0	0
TOTAL	3	1	73	10	0	2	5	0	0	94

Table 39b: Drivers & Motorcycle Riders Responsible for Crashes by Licence Type and Age:
Serious Injury Crashes

Age Group	Learner's Permit	Probationary Licence	Full Licence	Unlicensed	Conditional Licence	P1 Licence	P2 Licence	Disqualified	Unknown	TOTAL
0-15	0	0	0	1	0	0	0	0	0	1
16-19	10	0	1	5	0	13	21	0	1	51
20-24	10	0	35	6	0	6	19	0	1	77
25-29	4	0	42	8	0	2	6	1	2	65
30-39	4	2	70	13	0	3	5	0	5	102
40-49	1	2	63	7	0	1	0	0	1	75
50-59	0	0	75	2	0	1	1	0	1	80
60-69	0	0	74	3	0	0	1	0	2	80
70+	0	0	68	1	0	0	0	0	0	69
Unknown	0	0	0	0	0	0	0	0	19	19
TOTAL	29	4	428	46	0	26	53	1	32	619

Table 39c: Drivers & Motorcycle Riders Responsible for Crashes by Licence Type and Age:
Minor Injury Crashes

Age Group	Learner's Permit	Probationary Licence	Full Licence	Unlicensed	Conditional Licence	P1 Licence	P2 Licence	Disqualified	Unknown	TOTAL
0-15	0	0	0	0	0	0	0	0	0	0
16-19	36	1	6	9	0	138	124	0	3	317
20-24	12	3	326	10	0	20	101	2	15	489
25-29	11	5	342	15	0	12	32	0	8	425
30-39	4	4	547	29	0	14	19	0	15	632
40-49	3	13	385	14	0	6	10	0	1	432
50-59	2	3	407	7	0	0	1	0	2	422
60-69	0	1	313	2	0	0	0	0	2	318
70+	0	0	344	3	0	0	0	0	0	347
Unknown	0	0	7	0	0	0	1	0	261	269
TOTAL	68	30	2677	89	0	190	288	2	307	3651

Table 39d: Drivers & Motorcycle Riders Responsible for Crashes by Licence Type and Age:
Property Damage Crashes

Age Group	Learner's Permit	Probationary Licence	Full Licence	Unlicensed	Conditional Licence	P1 Licence	P2 Licence	Disqualified	Unknown	TOTAL
0-15	0	0	0	2	0	0	0	0	0	2
16-19	36	0	25	10	0	307	258	2	17	655
20-24	16	2	686	50	0	86	233	3	35	1111
25-29	10	5	689	42	0	30	60	3	37	876
30-39	19	11	1150	56	0	26	31	4	35	1332
40-49	7	10	913	20	1	7	12	4	11	985
50-59	4	6	841	22	0	2	6	1	12	894
60-69	0	2	600	6	0	0	1	1	6	616
70+	0	0	543	3	0	0	1	0	9	556
Unknown	1	0	70	3	0	6	9	0	724	813
TOTAL	93	36	5517	214	1	464	611	18	886	7840

Table 39e: Drivers & Motorcycle Riders Responsible for Crashes by Licence Type and Age:
All Crashes

Age Group	Learner's Permit	Probationary Licence	Full Licence	Unlicensed	Conditional Licence	P1 Licence	P2 Licence	Disqualified	Unknown	TOTAL
0-15	0	0	0	3	0	0	0	0	0	3
16-19	84	1	32	25	0	460	407	2	21	1032
20-24	38	5	1053	68	0	112	354	5	51	1686
25-29	26	10	1080	65	0	44	98	4	47	1374
30-39	27	17	1783	102	0	43	55	4	55	2086
40-49	11	26	1370	41	1	14	22	4	13	1502
50-59	6	9	1335	33	0	3	8	1	15	1410
60-69	0	3	989	12	0	0	2	1	10	1017
70+	0	0	976	7	0	0	1	0	9	993
Unknown	1	0	77	3	0	6	10	0	1004	1101
TOTAL	193	71	8695	359	1	682	957	21	1225	12204

Reference Information for South Australia

Population
Licence
Vehicle Information

Table 40: Estimated Population¹ by Age and Sex

Age Group	Sex		ALL PERSONS
	Male	Female	
0-15	168657	160079	328736
16-19	42457	40389	82846
20-24	59746	56219	115965
25-29	58484	57975	116459
30-39	114019	116145	230164
40-49	108331	109610	217941
50-59	110773	114614	225387
60-69	98048	104495	202543
70+	104920	126732	231652
TOTAL	865435	886258	1751693

Table 41: Licence and Permit Holders² by Age and Sex

Age Group	Sex			ALL PERSONS
	Male	Female	Unknown	
16-19	31915	30946	75	62936
20-24	48,882	46085	67	95034
25-29	51735	49503	49	101287
30-39	107159	105118	89	212366
40-49	105390	102962	38	208390
50-59	109406	106467	27	215900
60-69	96,968	94388	16	191372
70+	90,362	79,971	6	170,339
TOTAL	641817	615440	367	1257624

¹ Population as of June 2019. Source: Australian Bureau of Statistics, *Australian Demographic Statistics*, cat.no. 3101.0

² At December 2019. Source: TRUMPS database, Registration & Licensing Section, Departmental for Infrastructure and Transport

Table 42: Motor Vehicle on Register¹ by Vehicle Type

Type of Vehicle	ALL VEHICLES
Cars & Station Wagons	1,078,391
Utilities	182,653
Panel Vans	36,952
Rigid & Other Trucks	41,844
Articulated Trucks	8,863
Other Commercials ²	15,182
Buses	4,220
Motorcycles	45,688
Other ³	46,682
TOTAL	1,460,475

Table 43: Vehicle Kilometres Travelled⁴ (VKT) by Vehicle Type

Type of Vehicle	TOTAL VKT ('000 000)
Passenger Vehicle	13,071
Light Commercials	3,318
Rigid Trucks	514
Articulated Trucks	663
Non-freight Carrying Trucks	14
Motorcycles	93
Buses	143
TOTAL	17,817

¹ At June 2019. Excludes trailers, caravans, plant and equipment. Source: TRUMPS database, Registration & Licensing Section, Departmental for Infrastructure and Transport

² Includes animal transporter vehicle, drilling rig vehicle, earth moving vehicle, garbage truck, industrial vehicle, mobile crane vehicle, tanker vehicle

³ Includes ambulance, armoured vehicle, fork lift, land implement vehicle, golf buggy, tractors

⁴ Travel for the year ended June 2018. Source: Australian Bureau of Statistics, *Survey of Motor Vehicle Use*, cat. no. 9208.0