

# New Adelaide Aquatic Centre

Community input into what is important at the new Adelaide Aquatic Centre



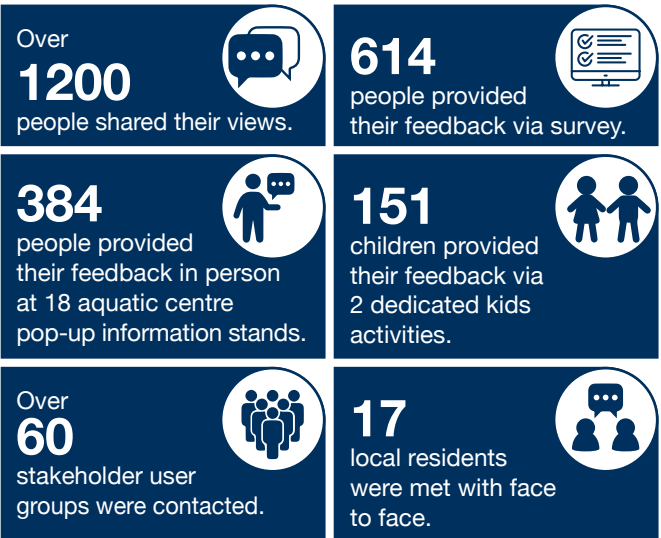
The South Australian Government has committed \$80 million to own and build the new Adelaide Aquatic Centre in the Adelaide City northern Park Lands at Pardipardinyilla/Denise Norton Park (Park 2).

The Department for Infrastructure and Transport (the Department) is responsible for the design and construction of this new fit-for-purpose centre, and is working together with the Office for Recreation, Sport and Racing who will operate the facility.

During **November and December 2022**, the Department undertook engagement to gather further insights on what is most important to centre users and the broader community to help inform the design of the new Adelaide Aquatic Centre.

Learnings from this phase of engagement are being used by the design team to inform the Concept Design for the new centre, and will help deliver a facility that is exemplary, balances community needs and is sensitive to its highly valued location in the Park Lands.

## Who we heard from



## How we engaged

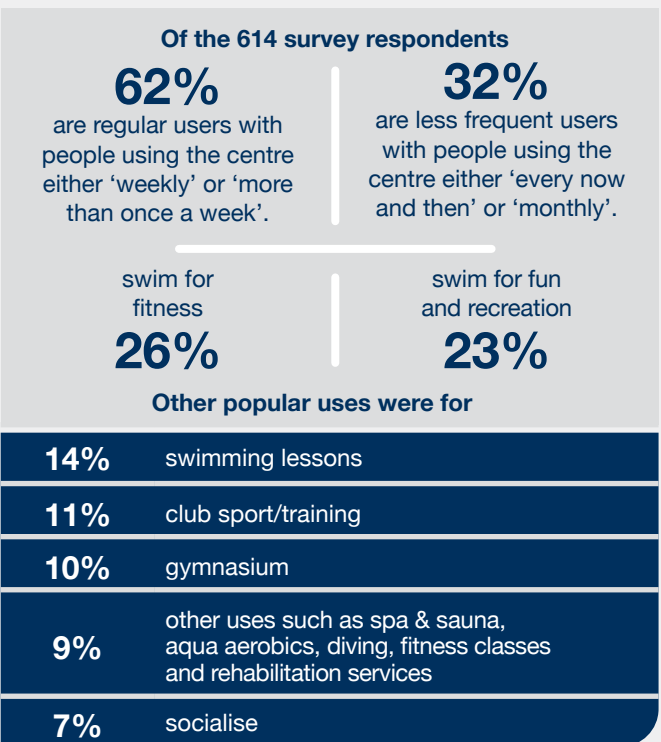
Our engagement included the following activities:

- Distribution of a project update and survey (online and hard copy) to over 4100 addresses within a 1-kilometre radius of the existing Adelaide Aquatic Centre and over 900 people on the Aquatic Centre project mailing list
- Meetings with aquatic sporting clubs, service and training providers
- Door knocking residences along Barton Terrace West
- A local resident meeting
- Staffed pop-up information stand at the existing aquatic centre
- Targeted children’s activities
- Social media

This information was also made available in Vietnamese, Pushto, Persian, Hazaragi and Mandarin to help encourage feedback from as many people as possible.

## What we heard

How do people use the existing centre?



## What did people most want?

Nearly 1800 suggestions were collected during the engagement about the kind of facilities or features people would most like to see in the new centre, and can be summarised into the following themes:



### POOLS

The community's responses were varied on the preferred pool sizes, depths and access requirements in the new centre to meet the needs of lap swimming, competitions, swimming lessons, school carnivals, club sports and recreational swimming. However, there was strong interest in having a 50-metre pool available for lap swimming.



### CAFÉ

The community would like to have a modern destination café with dedicated seating space and views to outside that serves high quality, healthy food and coffee, and provides a place to socialise and relax.



### RECREATION

The community is keen to see the provision of water play facilities and activities to suit all age groups in the new centre, as well as dry playground facilities. Children favoured inflatables, water slides, squirt guns and a big pool.



### DESIGN

There is a desire for the new centre to be a modern facility with good environmental performance, utilisation of natural light and improved noise attenuation. Accessibility for those with mobility issues and better connection between both indoor and outdoor spaces is also sought by the community.



### GYM/FITNESS

A larger, more modern and airconditioned gym with 24/7 accessibility is sought by some of the community that includes a range of equipment and fitness classes such as yoga and pilates.



### OUTDOOR

Better indoor/outdoor connection is sought by the community including the provision of outside recreation areas, BBQs and picnic areas to take advantage of the Park Lands amenity.



### CHANGE FACILITIES

Many improvement suggestions were received about change room requirements in the new centre including cleanliness, privacy, accessibility, size and the need to provide for different types of change facilities including unisex, family and school groups.



### SEATING

The community would like to have additional and comfortable seating provided for spectators in the new centre.



### SPA AND SAUNA

The community would like the spa and sauna (dry and steam) to be made available for all users of the new centre and that it should be well designed, ventilated and easily accessible.



### PARKING

The community indicated a need for adequate car parking at peak times, undercover bicycle parking and better connection/services to public transport.



### DIVING

There is interest in having community level diving facilities return to the new centre, noting competition diving opportunities exist elsewhere.



### PROGRAMMING

The community is keen to see programming of activities that cater for a wide variety of uses such as birthday parties, social clubs, activities for people with sensory needs and school holiday activities for children.



### AQUATIC HEALTH

There is a desire for health and wellbeing facilities in the new centre including better pool accessibility and a wide range of therapy rehabilitation, special needs provision, hydrotherapy and immersion therapy as well as aqua aerobic classes.



### OTHER

Some of the other suggestions made by the community include free lockers, continuation of the creche and swim shop, meeting rooms for club use, improvements to the Public Announcement system and secure club equipment storage facilities.

## What should the new centre look like?

As part of the survey, people were asked to choose 5 images from 32 images illustrating aquatic centres from around Australia and the world and tell us what they most liked about them. Over 2800 comments were received in total. The images that received most comments were those that showcased modern design elements and the use of natural materials and light, aquatic activities for children and adults, and a strong connection to the outdoor park space.

The following images and direct comments from community members illustrate people's preferences for the new centre.

### Modern Design Elements and Use of Natural Materials and Light

#### CONCARNEAU AQUATIC CENTRE



*Modern look, open and inviting, lots of natural light, high elevated ceiling, large pool area, architecturally distinct, contemporary, innovative design.*

Image courtesy of Aquatic Centre, Concarneau (Mimram Architects)

#### GRANDVIEW HEIGHTS AQUATIC CENTRE



*Natural materials and light, connection to outside, multi-use space that caters for all ages, stylish and modern, bright and open.*

Image courtesy of Grandview Heights Aquatic Centre (HCMA)

#### PAÏCHEROU AQUATIC CENTER



*Inviting calm space, natural looking, light and airy, view of nature brings the outside in, simplicity of design, wide lanes for swimming fitness, multi-functional pool.*

Image courtesy of Taillandier Architectes Associes

### Aquatic Activities for Children and Adults

#### GUNYAMA PARK AQUATIC CENTRE



*Big fun play area for kids, safe and accessible for young children, range of activities and play spaces, shallow entry, interactive and engaging.*

Image courtesy of Gunyama Park Aquatic and Recreation Centre (Andrew Burges Architects)

#### ACCESSIBLE WATER PLAY



*Inclusive play for all, outdoor integration and water play, fun, safe and accessible, innovative and unique.*

Image courtesy of Morgans Wonderland

#### ADULT ACTIVITIES

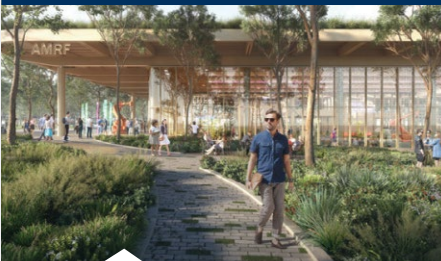


*Group classes, exercise for older adults, pool activities, instruction area, hydrotherapy exercise, rehab and fitness, flexible space, inclusivity, multi purpose, health and wellness benefits.*

Image courtesy of Aqua Frame

### Connection to the Park Lands

#### ADVANCED MANUFACTURING RESEARCH FACILITY



*Welcoming entrance, low rise, lots of windows, greenery, seamless integration, natural setting, tree cover, draws people in and activates the Park Lands.*

Image courtesy of Hassel & Djinjama

#### CHURCH ST PARK



*Lots of trees and seating, peaceful and cool, shady outdoor area, playful and versatile design.*

Image courtesy of Civic Design Centre

#### JAMES COOK UNIVERSITY



*Connection to Park Lands, building blends with natural surroundings, shaded walkway, fits with the environment, green interface, modern open space.*

Image courtesy of Wilsons Architects

## Resident feedback

67 properties along Barton Terrace West were doorknocked, with residents providing feedback that centred around mitigating local impacts such as carparking and traffic, construction/noise, loss of Park Lands and mature trees, site location, chlorine and food smells and cost to ratepayers.

## User group feedback

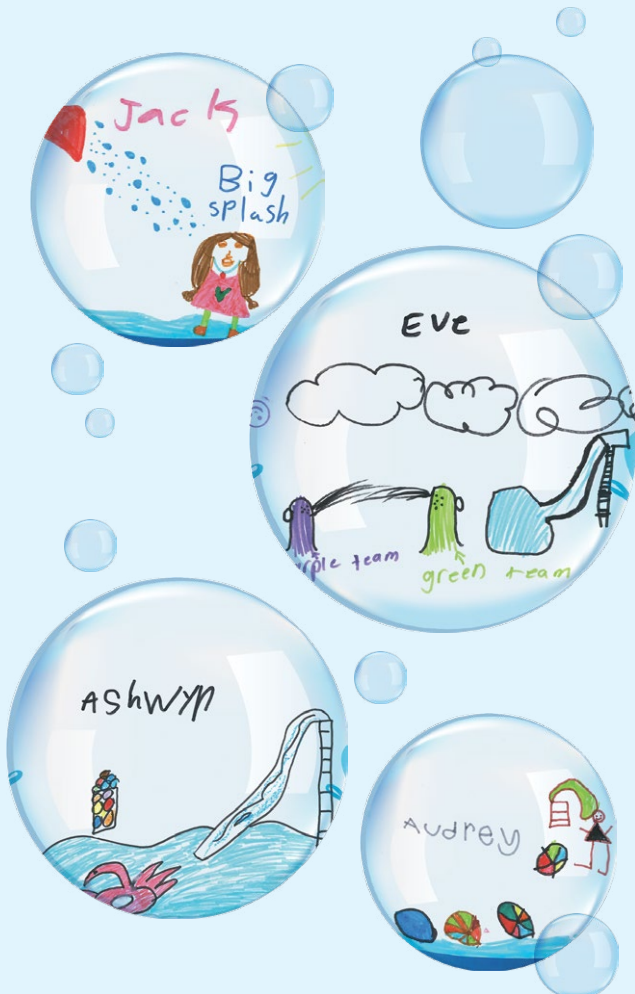
More than 20 sporting associations and clubs, health service providers and training providers that use the existing aquatic centre responded to the user group consultation including Determined 2, Active Inclusion, Swimming SA, Water Polo SA, Diving SA and Royal Lifesaving SA. Key themes from these discussions included provision of accessible and group change facilities, creating an inclusive facility, the depth of the pools required for different activities, availability of pool space at peak times, access to a room for training and functions, and secure user group storage.

## What did children want?

151 children shared their ideas for the design of water play activities at the new centre.

**Inflatables, Slides and Squirters** were the most popular suggestions in addition to a 'Big Pool'.

Other creative ideas included splash areas, basketball hoops, climbing wall, tunnels, swings and wave pool.



## Code amendment consultation

Consultation on potential changes to the planning rules via the Adelaide Aquatic Centre Code Amendment also took place during January – March 2023 to enable the development of the new centre and the return of the existing centre site to Park Lands. For more information, please visit [plan.sa.gov.au/en/code\\_amendments](http://plan.sa.gov.au/en/code_amendments).

## Next steps

The planning and design process for the new facility is underway and will include the development of a Concept Design. The feedback received from the community will help inform the design.

The Department would like to thank members of the community who provided input into the design of the new aquatic centre. We want to make sure the new centre considers the needs and wants of future users as much as possible but at the same time we need to deliver a centre that is financially responsible and appropriately sized. For this reason, not all ideas will necessarily be able to be included in the new centre.

We look forward to sharing with you the proposed Concept Design in mid 2023.

## Key project milestones



## More information

To register for future project updates or if you have any questions and would like to speak to a member of the project team, please visit [dit.sa.gov.au/aac](http://dit.sa.gov.au/aac), call 1300 794 880 or email [DIT.Engagement@sa.gov.au](mailto:DIT.Engagement@sa.gov.au)