

Norwood Payneham and St Peters

Produced by Department of Planning, Transport and Infrastructure
 Planning Division
 GPO Box 1815 Adelaide SA 5001
 www.sa.gov.au
 Lambert Conformal Conic
 Projection
 Compiled 9 June 2020

Development Plan Map

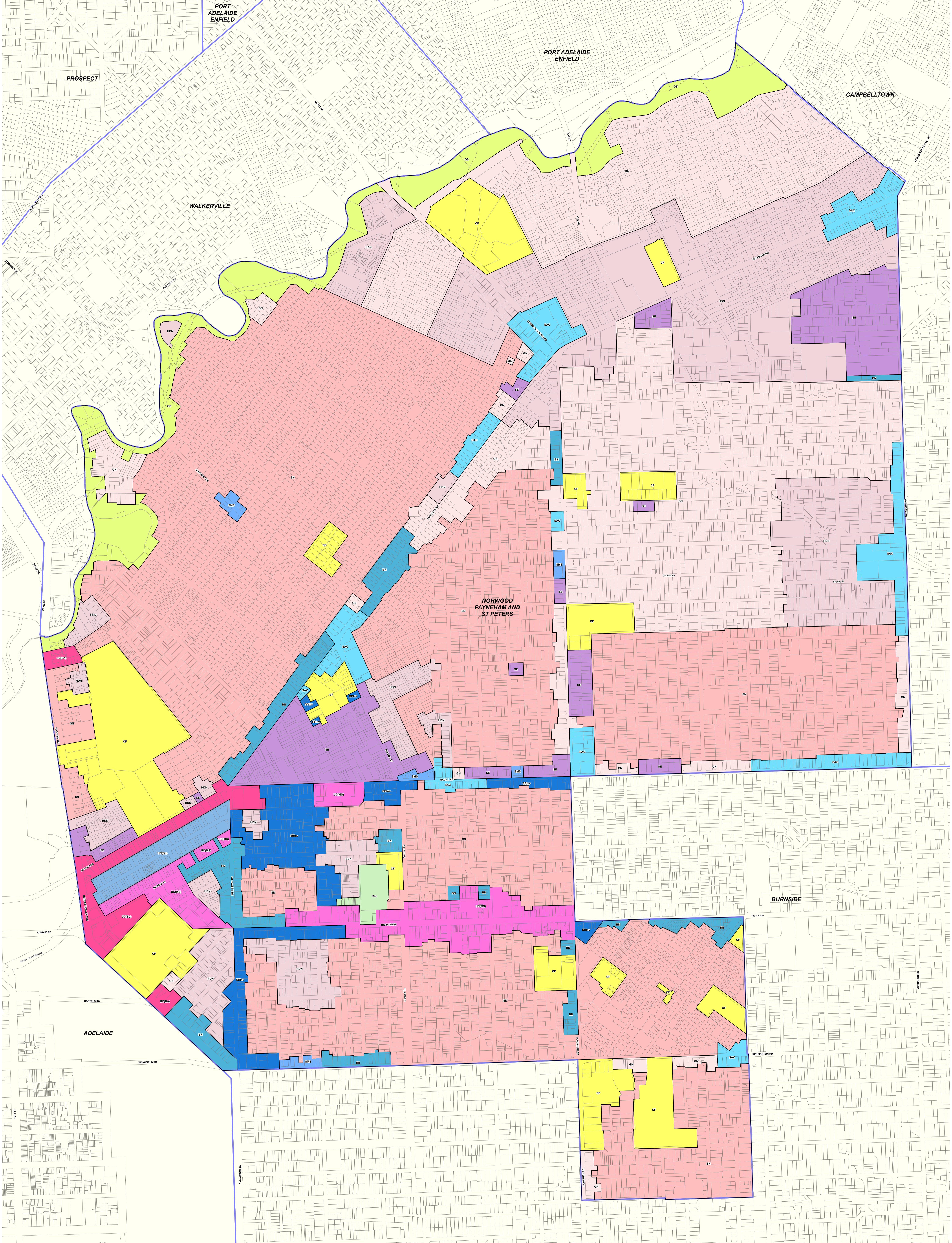
- Commercial
- Community Facilities
- Heritage
- Industrial
- Miscellaneous
- Recreation
- Residential
- Development Plan
- Zoning
- Policy Area
- Local government boundary
- Cadastre

While every reasonable effort has been made to ensure that this document is correct at the time of publication, the State of South Australia and its agencies, employees, contractors and consultants disclaim any and all liability to any person in respect to anything or the consequences of anything done or omitted to be done in reliance upon the whole or any part of this document.



Department of Planning,
 Transport and Infrastructure
 PLAN 5087

- | | | | |
|---|--|---|--|
| <ul style="list-style-type: none"> Zoning B - Business Cu - Community DC - District Commercial DC(Norw) - District Centre (Norwood) DC(StP) - District Centre (St Peters) DS - District Shopping LC - Local Commercial LC(Norw) - Local Centre (Norwood) LC(StP) - Local Centre (St Peters) LI - Light Industry LO - Local Office LPRT - Linear Park (River Torrens) LU - Local Use A MUB - Mixed Use B MU(A) - Mixed Use Historic (Conservation) MU(B) - Mixed Use Historic (Conservation) NCC - Neighbourhood Centre R - Residential RC - Residential Character RC(Norw) - Residential Character (Norwood) | <ul style="list-style-type: none"> RHC - Residential Historic (Conservation) Rec - Recreation UC - Urban Consider Policy Area 1.1 - Medium Density 11.1 - Dequetteville Terrace 11.2 - The Parade/Fullarton Road 11.3 - Kensington 11.4 - Payneham Road 11.5 - Portrush Road 12.1 - Kent Town 1 12.11 - Hackney North 12.12 - Hackney South 12.13 - College Park 12.14 - The Avenues 12.15 - St Peters 12.16 - Stoney 12.17 - Maylands 12.18 - Joslin / Roydon Park 12.19 - Madden (Broad Street / Putlock Avenue) 12.2 - Kent Town 2 | <ul style="list-style-type: none"> 12.20 - Payneham (Henry Street / George Street) 12.21 - Payneham (Harcourt Road) 12.3 - Norwood 1 12.4 - Norwood 2 12.5 - Norwood 3 12.6 - Norwood 4 12.7 - Norwood 5 12.8 - Kensington 1 12.9 - Kensington 2 13.1 - Resurrection 13.2 - Education 14.1 - Bissellwood 14.2 - Business 14.3 - High Street 15.1 - Evocative / Maylands / Steppay 15.2 - Hackney 15.3 - Hillfield / Maylands 15.4 - St Peters / Joslin / Roydon Park 15.5 - Trilly Gardens / St Morris 2.1 - Retail Core 2.2 - The Parade East | <ul style="list-style-type: none"> 2.3 - The Parade West 3.1 - Mansfieldville 3.2 - Magill Road 6.1 - West Norwood 6.2 - Bealieu Road 6.3 - Magill Road West 6.6 - Magill Road East 6.7 - Kensington 3 7 - Mixed Use A 8.1 - Kensington Road 8.2 - Dequetteville Terrace South 8.3 - Portrush Road 8.5 - Diamond Terrace 8.6 - George Street/Edward Street |
|---|--|---|--|



Norwood Payneham and St Peters

2019 Code Consultation Map

P&D Code Zones
DRAFT

- | | | |
|--|--|--|
| <p>P&D Code Zones</p> <p>Infrastructure & Movement Systems</p> <ul style="list-style-type: none"> Community Facilities <p>People & Neighbourhoods - Residential</p> <ul style="list-style-type: none"> General Neighbourhood Housing Diversity Neighbourhood Suburban Neighbourhood Suburban Neighbourhood Urban Corridor (Boulevard) Urban Corridor (Main Street) | <p>Productive Economy - Employment</p> <ul style="list-style-type: none"> Suburban Activity Centre Business Neighbourhood Suburban Business and Innovation Suburban Main Street Urban Corridor (Business) Suburban Employment <p>Resilient Communities & Environment</p> <ul style="list-style-type: none"> Open Space | <ul style="list-style-type: none"> Recreation Local government boundary Cadastre |
|--|--|--|



Produced by Department of Planning, Transport and Infrastructure
Planning and Land Use Services
GPO Box 1815 Adelaide SA 5001
www.sa.gov.au
Lambert Conformal Conic
Projection
Compiled 30 September 2019

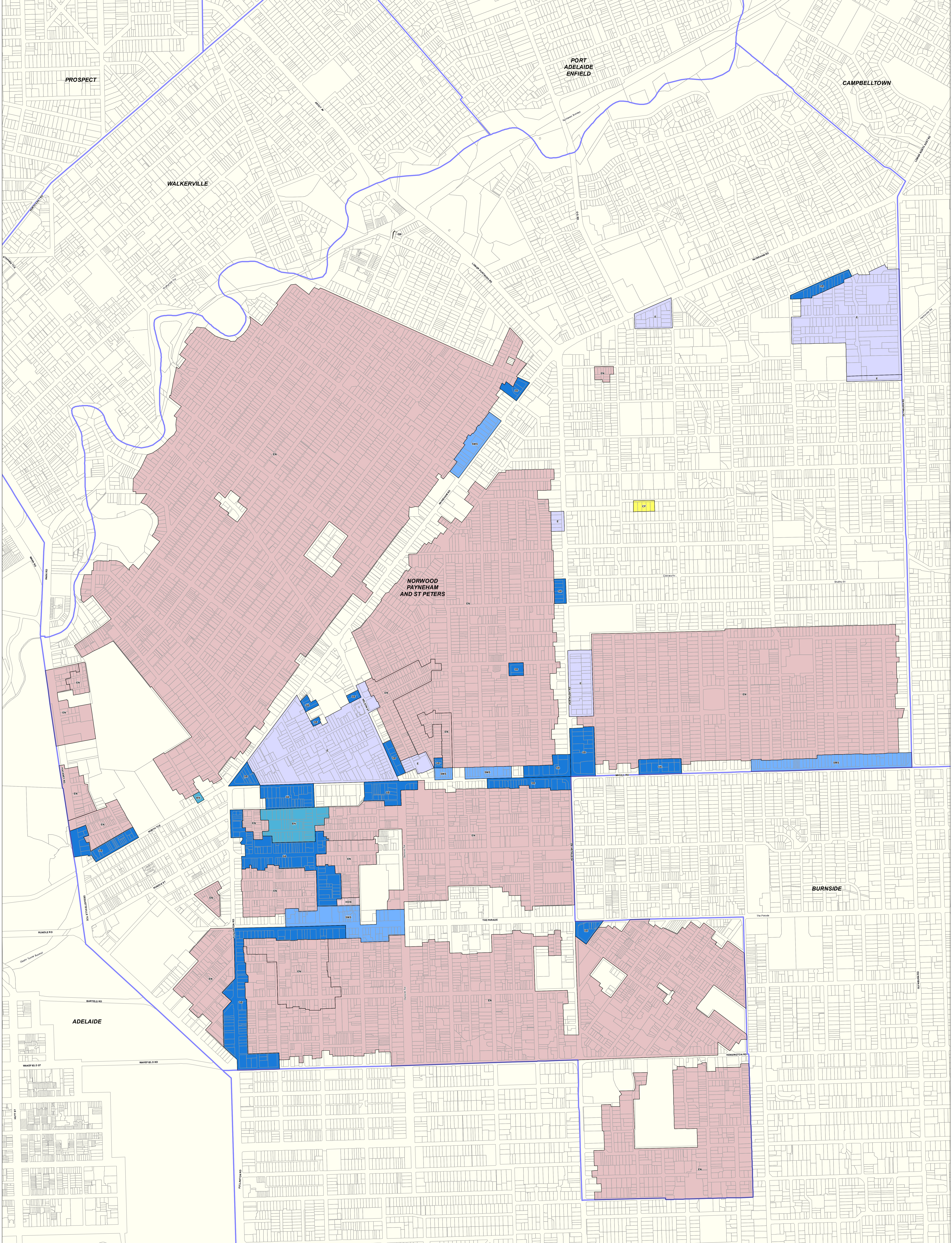
While every reasonable effort has been made to ensure that this document is correct at the time of publication, the State of South Australia and its agencies, employees and contractors, disclaim any and all liability to any person in respect to anything or the consequences of anything done or omitted to be done in reliance upon the whole or any part of this document.



P&D Code Zones Abbreviations

- BN - Business Neighbourhood
- CF - Community Facilities
- GN - General Neighbourhood
- HDN - Housing Diversity Neighbourhood
- OS - Open Space
- Rec - Recreation
- SAC - Suburban Activity Centre
- SBS - Suburban Business and Innovation
- SE - Suburban Employment
- SMS - Suburban Main Street
- SN - Suburban Neighbourhood
- UC(B) - Urban Corridor (Business)
- UC(MS) - Urban Corridor (Main Street)
- UC(S) - Urban Corridor (Boulevard)

PLAN ID: 8811



Norwood Payneham and St Peters 2020 Updated Code Consultation Map



- P&D Code Zones**
- People & Neighbourhoods - Residential
 - Established Neighbourhood
 - General Neighbourhood
 - Housing Diversity Neighbourhood
 - Productive Economy - Employment
 - Business Neighbourhood
 - Suburban Business
 - Suburban Main Street
 - Infrastructure & Movement Systems
 - Employment
 - Community Facilities
 - Local government boundary
 - Cadastral

P&D Code Zones
DRAFT

Produced by: Attorney-General's Department
 Planning and Land Use Services
 GPO Box 1815 Adelaide SA 5001
 www.sa.gov.au
 Lambert Conformal Conic
 4 November 2020

© Government of South Australia 2020
 No part of this document may be reproduced, stored in a retrieval system, or transmitted in any form, or by any means, without the prior written permission of the publisher, the Attorney-General's Department.

While every reasonable effort has been made to ensure that this document is correct at the time of publication, the State of South Australia and its agencies, officers, employees and contractors, disclaim any and all liability to any person in respect to any loss or the consequences of anything done or omitted to be done in reliance upon the whole or any part of this document.



PLN/20/1881

Current Development Plan Zone	Current Development Plan Policy Area	Current Development Plan Precinct	Consultation November 2019 Code Proposal	Consultation November 2020 Code Proposal	Planning & Design Code Subzone
Business	Beulah Road		Suburban Business and Innovation	Suburban Business	
Business	Kensington		Suburban Business and Innovation	Suburban Business	
Business	Magill Road East		Suburban Business and Innovation	Suburban Business	
Business	Magill Road West		Suburban Business and Innovation	Suburban Business	
Business	West Norwood		Suburban Business and Innovation	Suburban Business	
Community	Education		Community Facilities	Community Facilities	
Community	Recreation		Community Facilities	Community Facilities	
Community			Community Facilities	Community Facilities	
District Centre (Norwood)	Retail Core		Urban Corridor (Main Street)	Urban Corridor (Main Street)	
District Centre (Norwood)	The Parade East		Urban Corridor (Main Street)	Urban Corridor (Main Street)	
District Centre (Norwood)	The Parade West		Urban Corridor (Main Street)	Suburban Main Street	
District Centre (St Peters)			Suburban Activity Centre	Suburban Activity Centre	
District Commercial			Suburban Activity Centre	Employment (Portrush Road, Evandale) Suburban Business (Portrush Road, Trinity Gardens) Suburban Main Street (Magill Road, Maylands) Suburban Business (Bennett Street, Maylands)	
District Shopping			Suburban Activity Centre	Suburban Activity Centre	
Light Industry			Suburban Employment	Employment	
Linear Park (River Torrens)			Open Space	Open Space	
Local Centre (Norwood)			Suburban Main Street	Suburban Main Street	

Current Development Plan Zone	Current Development Plan Policy Area	Current Development Plan Precinct	Consultation November 2019 Code Proposal	Consultation November 2020 Code Proposal	Planning & Design Code Subzone
Local Centre (St Peters)			Suburban Main Street	Suburban Main Street	
Local Commercial			Employment	Suburban Business (Hackney Road / North Terrace, Hackney) Business Neighbourhood (North Terrace, Hackney) Suburban Business (Maid and Magpie Hotel site, Stepney) Suburban Business (Nelson Street, Stepney) Suburban Main Street (Magill Road, Maylands) Suburban Business (Magill Road, Maylands) Suburban Business (Maylands Hotel site, Maylands) Employment (Portrush Road, Trinity Gardens) Suburban Business (Magill Road, Trinity Gardens) Suburban Business (Portrush Road, Evandale) Community Facilities (Mausoleum at Second Avenue, Payneham South) Suburban Business (Payneham Tavern site at Payneham Road, Payneham) Suburban Business (Lewis Road, Glynde)	
Local Office			Business Neighbourhood	Business Neighbourhood Employment (for location at Davis Road, Glynde)	

Current Development Plan Zone	Current Development Plan Policy Area	Current Development Plan Precinct	Consultation November 2019 Code Proposal	Consultation November 2020 Code Proposal	Planning & Design Code Subzone
Local Shopping			Suburban Activity Centre	Suburban Activity Centre (Glynde Corner – Payneham Road, Felixstow and Glynburn Road, Glynde) Suburban Main Street (Payneham Road, Royston Park) Suburban Main Street (Magill Road, Trinity Gardens)	
Mixed Use A			Suburban Business and Innovation	Suburban Business Business Neighbourhood (for location south of Chapel Street, Norwood)	
Mixed Use B	Dequetteville Terrace South		Business Neighbourhood	Business Neighbourhood	
Mixed Use B	George Street/Edward Street		Business Neighbourhood	Business Neighbourhood	
Mixed Use B	Kensington Road		Business Neighbourhood	Business Neighbourhood	
Mixed Use B	Osmond Terrace		Business Neighbourhood	Business Neighbourhood	
Mixed Use B	Portrush Road		Business Neighbourhood	Business Neighbourhood	
Mixed Use Historic (Conservation)	Dequetteville Terrace		Business Neighbourhood	Business Neighbourhood	
Mixed Use Historic (Conservation)	Kensington		Business Neighbourhood	Business Neighbourhood	
Mixed Use Historic (Conservation)	Payneham Road		Business Neighbourhood	Business Neighbourhood	
Mixed Use Historic (Conservation)	Portrush Road		Business Neighbourhood	Business Neighbourhood	
Mixed Use Historic (Conservation)	The Parade/Fullarton Road		Business Neighbourhood	Business Neighbourhood	
Neighbourhood Centre	Magill Road		Suburban Activity Centre	Suburban Activity Centre	
Neighbourhood Centre	Marryatville		Suburban Activity Centre	Suburban Activity Centre	
Recreation			Recreation	Recreation	

Current Development Plan Zone	Current Development Plan Policy Area	Current Development Plan Precinct	Consultation November 2019 Code Proposal	Consultation November 2020 Code Proposal	Planning & Design Code Subzone
				Housing Diversity Neighbourhood (for existing residential development between Florence and Beyer Streets, Norwood)	
Residential	Medium Density		Housing Diversity Neighbourhood	Housing Diversity Neighbourhood	
Residential			General Neighbourhood	General Neighbourhood	
Residential Character	Evandale / Maylands / Stepney		Suburban Neighbourhood	Established Neighbourhood	
Residential Character	Hackney		Suburban Neighbourhood	Established Neighbourhood	
Residential Character	Heathpool / Marrayatville		Suburban Neighbourhood	Established Neighbourhood	
Residential Character	St Peters / Joslin / Royston Park		Suburban Neighbourhood	Established Neighbourhood	
Residential Character	Trinity Gardens / St Morris		Suburban Neighbourhood	Established Neighbourhood	
Residential Character (Norwood)			Suburban Neighbourhood	Established Neighbourhood	
Residential Historic (Conservation)	College Park		Suburban Neighbourhood	Established Neighbourhood	
Residential Historic (Conservation)	Hackney North		Housing Diversity Neighbourhood	Established Neighbourhood	
Residential Historic (Conservation)	Hackney South		Housing Diversity Neighbourhood	Established Neighbourhood	
Residential Historic (Conservation)	Joslin / Royston Park		Suburban Neighbourhood	Established Neighbourhood	
Residential Historic (Conservation)	Kensington 1		Suburban Neighbourhood	Established Neighbourhood	
Residential Historic (Conservation)	Kensington 2		Suburban Neighbourhood	Established Neighbourhood	
Residential Historic (Conservation)	Kent Town 1		Housing Diversity Neighbourhood	Established Neighbourhood	
Residential Historic (Conservation)	Kent Town 2		Housing Diversity Neighbourhood	Established Neighbourhood	
Residential Historic (Conservation)	Marden (Broad Street / Pollock Avenue)		Suburban Neighbourhood	Established Neighbourhood	
Residential Historic (Conservation)	Maylands		Suburban Neighbourhood	Established Neighbourhood	

Current Development Plan Zone	Current Development Plan Policy Area	Current Development Plan Precinct	Consultation November 2019 Code Proposal	Consultation November 2020 Code Proposal	Planning & Design Code Subzone
Residential Historic (Conservation)	Norwood 1		Suburban Neighbourhood	Established Neighbourhood	
Residential Historic (Conservation)	Norwood 2		Housing Diversity Neighbourhood	Established Neighbourhood	
Residential Historic (Conservation)	Norwood 3		Housing Diversity Neighbourhood	Established Neighbourhood	
Residential Historic (Conservation)	Norwood 4		Suburban Neighbourhood	Established Neighbourhood	
Residential Historic (Conservation)	Norwood 5		Housing Diversity Neighbourhood	Established Neighbourhood	
Residential Historic (Conservation)	Payneham (Harcourt Road)		Suburban Neighbourhood	Established Neighbourhood	
Residential Historic (Conservation)	Payneham (Henry Street / George Street)		Housing Diversity Neighbourhood	Established Neighbourhood	
Residential Historic (Conservation)	St Peters		Suburban Neighbourhood	Established Neighbourhood	
Residential Historic (Conservation)	Stepney		Housing Diversity Neighbourhood	Established Neighbourhood	
Residential Historic (Conservation)	The Avenues		Suburban Neighbourhood	Established Neighbourhood	
Urban Corridor	Boulevard		Urban Corridor (Boulevard)	Urban Corridor (Boulevard)	
Urban Corridor	Business		Urban Corridor (Business)	Urban Corridor (Business)	
Urban Corridor	High Street		Urban Corridor (Main Street)	Urban Corridor (Main Street)	