

# COAST PARK STAGE ONE

## SEMAPHORE PARK TO WEST LAKES SHORE

Third Avenue to Wara Wayingga-Tennyson Dunes Conservation Reserve

### Final Path Design

The Government of South Australia's Coast Park initiative aims to improve community access and enjoyment of our beaches, improve connectivity and support public wellbeing through the establishment of a continuous 70-kilometre coastal shared-use path along the metropolitan coastline.

The Coast Park has been progressively implemented by the State Government in partnership with local councils since 1992. The section between Grange and Semaphore Park is one of the few remaining links to be completed.

Following extensive consultation under the *Linear Parks Act 2006*, the Minister for Planning established a linear park between Third Avenue, Semaphore Park and the northern edge of the Wara Wayingga-Tennyson Dunes Conservation Reserve (Stage One).

Construction of Coast Park Stage One is planned to commence in the coming months and its delivery will be managed by the Department for Infrastructure and Transport.

The final design shown considers community and stakeholder feedback and has sought to minimise the impact on the dune system, native vegetation and local fauna, while maximising community benefit and reducing effects on neighbouring properties.

The path will be a hard surface, consistent with other sections of Coast Park.

Importantly, the shared-use path will increase access to this part of our coastline to be used and enjoyed by people of all abilities.

More information on the construction timing, staging and methodology will be provided soon.

### Keeping you informed

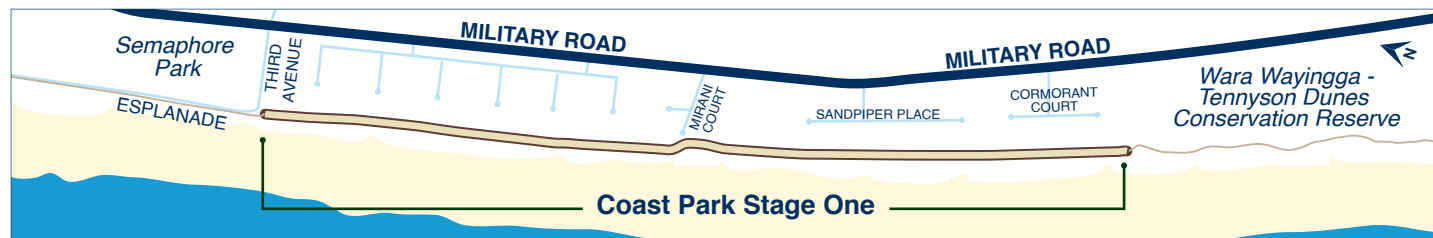
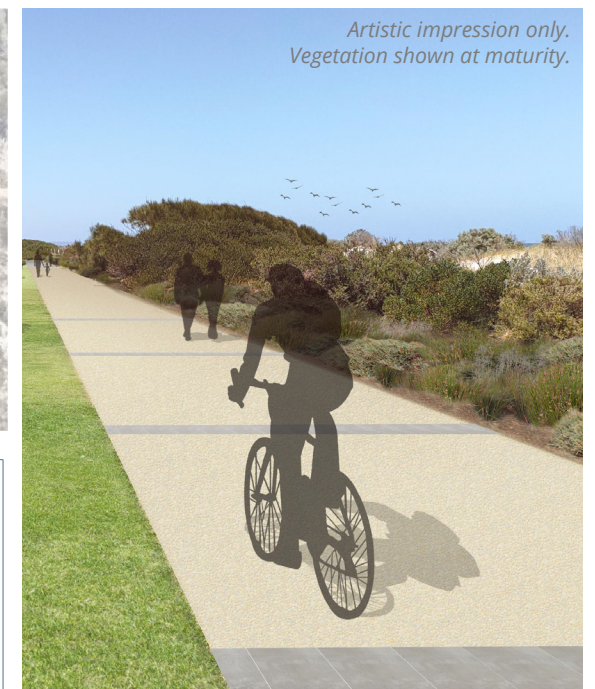
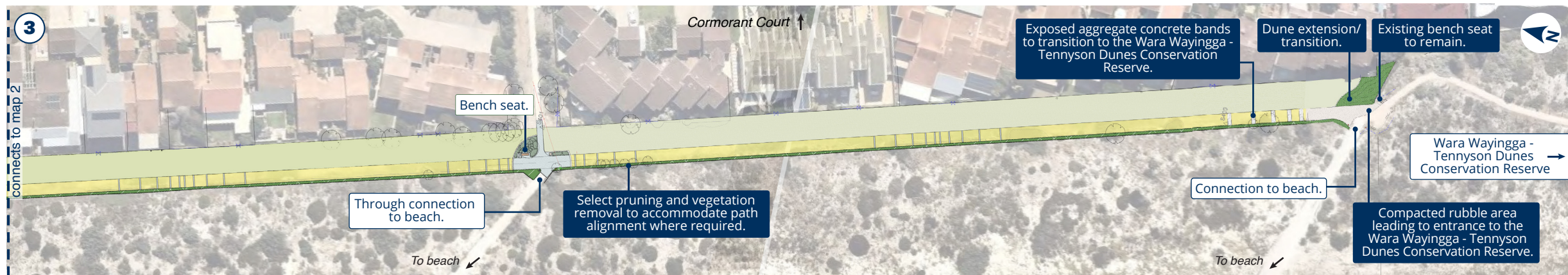
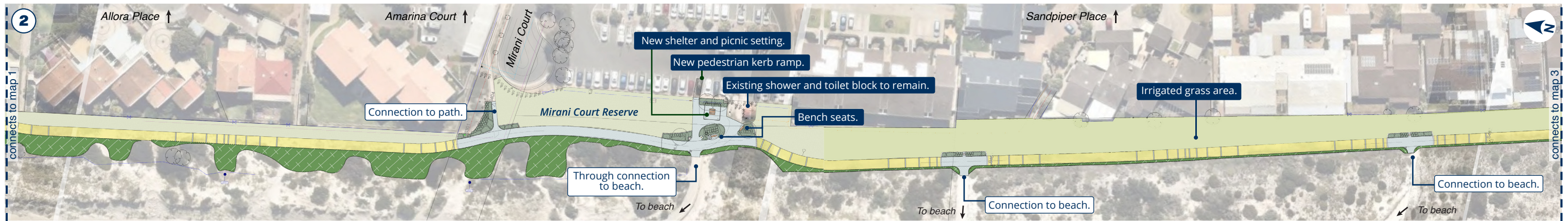
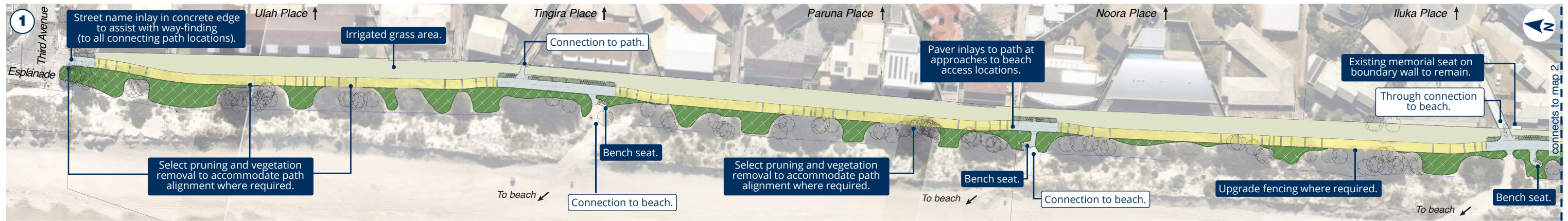
The Coast Park project team will provide updated information as this becomes available and work closely with the community to address any concerns, issues and/or opportunities in relation to construction activities.

Please see details below to contact the Project Team if you have any queries and to register for project updates, if you have not already done so:

-  Call 1300 060 456
-  Email: [dit.coastpark@sa.gov.au](mailto:dit.coastpark@sa.gov.au)
-  Visit: [www.coastpark.sa.gov.au](http://www.coastpark.sa.gov.au)

# COAST PARK STAGE ONE

## Semaphore Park to West Lakes Shore



Legend	
	Coloured concrete shared-use path
	Concrete block pavers
	Exposed aggregate concrete
	Compacted rubble
	Irrigated grassed area
	Planting (local native species)
	Dune planting (local native species)