

# ROAD DESIGN PRESENTATION STANDARDS

## DP017 - LANDSCAPING

K Net Number: 13555475  
Document Revision: 3  
Document Date: 18 November 2011

DEPARTMENT OF  
PLANNING, TRANSPORT  
AND INFRASTRUCTURE



**Government of South Australia**  
Department of Planning,  
Transport and Infrastructure

## Document Amendment Record

Rev	Change Description	Date	Author	Checked	Authorised
1	Initial Issue	29 July 2009	Anthony Crotty	Natasha Stone	Noel O'Callaghan
2	General review of text and example drawings	6 August 2009	John Hastie Alison Freer		Noel O'Callaghan
3	General review of text and example drawings	18 November 2011	John Hastie Alison Freer		Noel O'Callaghan

## Document Management

This document is the Property of the Department of Planning Transport and Infrastructure (DPTI) and contains information that is confidential to DPTI. It must not be copied or reproduced in any way without the written consent of DPTI. This is a controlled document and it will be updated and reissued as approved changes are made.

To be read in conjunction with CAD Manual & Presentation Guidelines DP001  
(Master Specification PC-EDM7)

## DP017 LANDSCAPING

### 1 Purpose

- 1.1 The 'Landscape' drawing is used to show various design components of landscapes in order to facilitate their construction or implementation.
- 1.2 For examples of this standard see attached drawings.

### 2 Contents

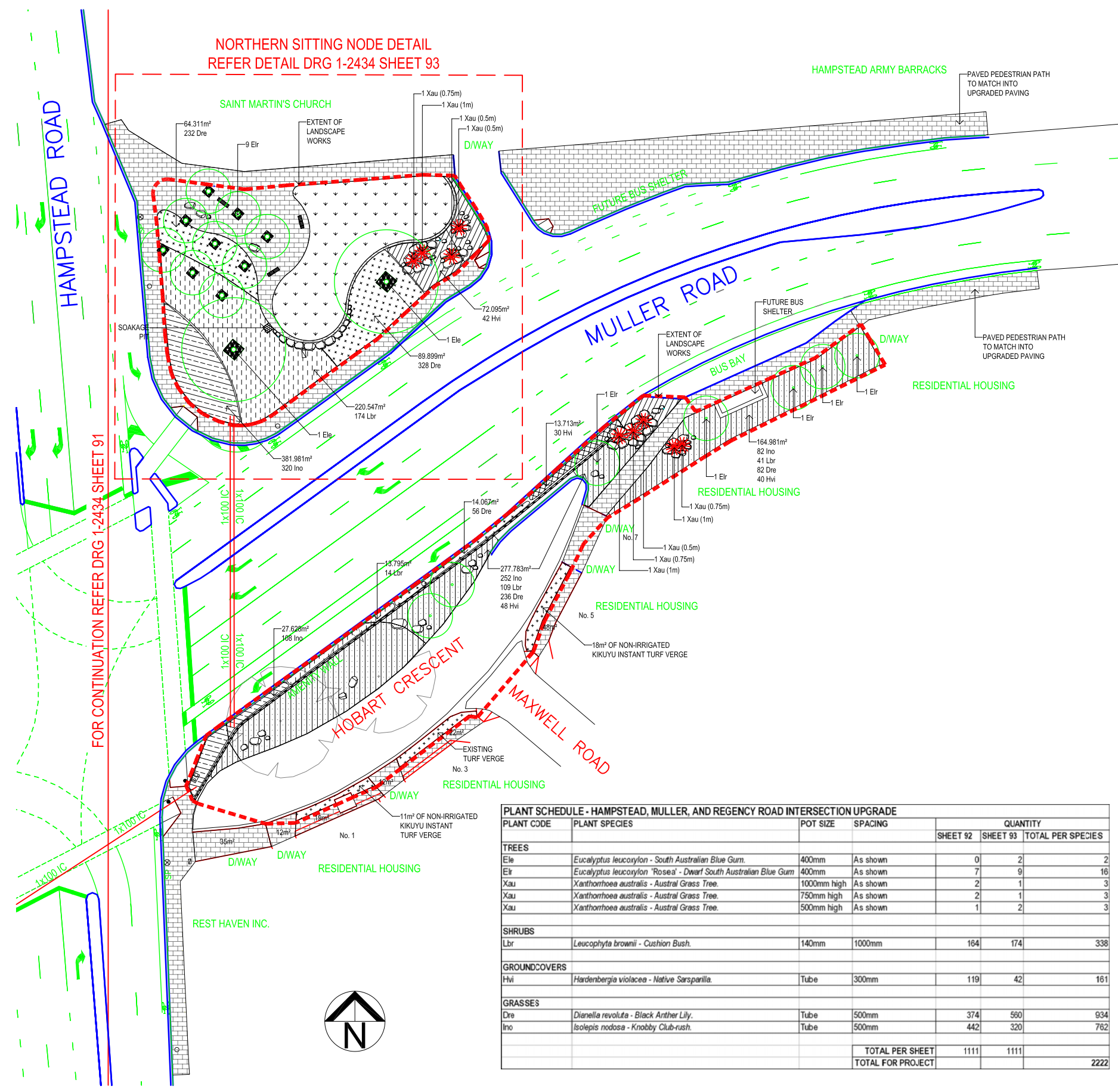
- 2.1 Layers to be shown as per the DPTI Layer Matrix (DP001)
- 2.2 The following CAD entities are required:
  - a) All relevant information in DP 001 - General Requirements.
  - b) Boundaries indicating the "Extent of Works" of all landscaping areas.  
(Layer = D-LSCP-Extent of Works, line style provided)
  - c) Contour lines indicating the new surface shape. (Layer = D-EWKS-Landscape Earthworks, line style provided)
  - d) Contour lines indicating the existing surface shape beyond the limits of the design.  
(Layer = D-EWKS-Landscape Earthworks)
  - e) Text identifying contour levels. (Layer = D-EWKS-Landscape Earthworks) (Paperspace text height = 2.5mm)
  - f) Text and symbols indicating new spot heights and positions (only as an alternative to using contours). (Layer = D-EWKS-Landscape Earthworks)
  - g) Hatching identifying different landscaping treatments and their locations. Hatching pattern, scale, and orientation to be the same as indicated in the legend (if used) and consistent across all drawing sheets.
  - h) Appropriate construction details, clearly labelled and cross-referenced. Details are to be numbered consecutively across all sheets within the set. Construction details are to be arranged on the sheet from left to right, top to bottom, or alternatively in a clockwise direction commencing from the top left corner.
  - i) Section and detail labels are to be placed in paper space (Layer = D-ENHA-General Notes, blocks provided)
  - j) Planting schedules shall be included on landscape drawings where any plantings are specified. Spreadsheets containing planting lists must be included on the relevant landscape drawing sheets, or if unable to fit on a sheet, may be placed on a separate sheet and cross-referenced according.
  - k) Landscape planting schedules are to be 'Excel' spreadsheets inserted into the drawing file on the correct layer (layer = D-ENHA-Schedules)
  - l) Plant species code abbreviations, where required, are to be labelled as per the following convention:

*Eucalyptus leucoxylon* = **Ele**

*Eucalyptus leucoxylon rosea* = **Elr**

- m) Plant species are to be listed in alphabetical order, and preferably placed in one of the following four categories: Trees, Shrubs, Groundcovers or Grasses.
- n) Planting Schedules also require the following information:
- i. Pot Size (in millimetres)
  - ii. Spacing
  - iii. Quantity per sheet
  - iv. Total Quantity.
- 2.3 AutoCAD models supplied by DPTI generally have their units set to 1 unit = 1 metre. AutoCAD drafters are permitted to scale the model up by a factor of 1000, provided that the base point is specified as the origin (0,0,0). Scaling the model up by a factor of 1000 will result in 1unit = 1 millimetre. Where a drawing is scaled in this way the AutoCAD system variable "INSUNITS" for that drawing must be changed to 4 (millimetres).
- 2.4 For guidelines on the geometric setout of landscape design, refer to Road Design Standards and Guidelines *Design Development - GD 1300*

NORTHERN SITTING NODE DETAIL  
REFER DETAIL DRG 1-2434 SHEET 93



LEGEND

- PAVED PEDESTRIAN PATH**  
BEST Pavers - New Dimension Slate Cobbles 400x400x60.  
•PORT ADELAIDE ENFIELD COUNCIL TO INSTALL PAVING AND GARDEN BED / TURF EDGING.  
•TIMING WILL NEED TO BE NEGOTIATED  
•(NOT IN CONTRACT) INSTALLED BY OTHERS.
- FORMAL SEATING**  
Shoreline Bench - Nos. 3  
•TIMBER AND STEEL BENCHES CONCRETED BELOW PAVED SURFACE.  
•SUPPLIED BY Street & Park Furniture.
- INFORMAL SEATING AND SOIL RETAINERS**  
KANMANTOO QUARRY BOULDER.  
•INFORMAL SEATING SET IN PAVING 450mm HIGH.  
•BOULDERS RETAINING SOIL FOR Xanthorrhoea's AND SOIL BEHIND TELSTRA PIT ADJACENT TURF AREA.  
•SCATTERED THROUGH LANDSCAPE BEHIND AMENITY WALL.
- AMENITY WALL**  
POST AND HEBEL PANEL WALL WITH Hills, Plains & Coast TOP PROFILE.  
•(NOT IN CONTRACT) INSTALLED BY OTHERS.  
•PRODUCT: Dulux. COLOUR: Valencia - 90YR 4/1472.
- SOAKAGE PIT**  
2m DEEP x 1x1m PIT - NOS. 1  
•PIT FILLED WITH 50-100mm ROCKS WRAPPED IN A24 BIDIM GEOFABRIC.  
•(NOT IN CONTRACT) PREPARED BY OTHERS.
- TURF AREA**  
280m² of LIMONTA Sport New Grass - SYNTHETIC TURF.  
PRODUCT NAME: Soccerpro MF. SIZE: 50mm. COLOUR: Field Green.  
•(NOT IN CONTRACT) INSTALLED BY OTHERS.  
•TIMING WILL NEED TO BE NEGOTIATED
- EXISTING TREES**  
LARGE Eucalyptus camaldulensis - River Red Gum.  
•LOCATED BEHIND HEBEL AMENITY WALL.
- LARGE SHADE TREES**  
Eucalyptus leucoxylon subsp. leucoxylon - SA Blue Gum.  
•TO PROVIDE SHADE AND MATCH THE SCALE OF THE EXISTING LARGE TREES.  
•PROVIDE A 7.840m² GROWING PIT.  
•PITS PREPARED BY OTHERS (NOT IN CONTRACT).
- FEATURE TREES**  
Eucalyptus leucoxylon 'Rosea' - Dwarf SA Blue Gum.  
•PROVIDE 1.440m² MULCHED PLANTING SURROUND IN PAVING.
- FEATURE GRASS TREES**  
Xanthorrhoea australis - Austral Grass Tree.  
•PLANTED AS PER PLAN INDICATES.  
•ALL GRASS TREES TO HAVE Platypus Anchoring System INSTALLED.
- BAND OF HILLS PLANTS**  
Hardenbergia violacea - Native Sarsparilla.  
•PLANTED IN SMALL GROUPS OF 3, 2 OR SINGULAR POSITIONS WITHIN THE NOMINATED MULCHED GARDEN BED.
- BAND OF HILLS PLANTS**  
Hardenbergia violacea 'Happy Wanderer'.  
•PLANTED IN SINGULAR POSITIONS 300mm OFF WALL WITHIN THE NOMINATED MULCHED GARDEN BED.
- BAND OF HILLS / PLAINS PLANTS**  
Dianella revoluta - Black Anther Lily.  
•PLANTED IN SMALL GROUPS OF 3, 2 OR SINGULAR POSITIONS WITHIN THE NOMINATED MULCHED GARDEN BED.
- BAND OF PLAINS / COASTAL PLANTS**  
Leucophyta brownii - Cushion Bush.  
•PLANTED IN SMALL GROUPS OF 3, 2 OR SINGULAR POSITIONS WITHIN THE NOMINATED MULCHED GARDEN BED.
- BAND OF COASTAL PLANTS**  
Isotopsis nodosa - Knobby Club-rush.  
•PLANTED IN SMALL GROUPS OF 3, 2 OR SINGULAR POSITIONS WITHIN THE NOMINATED MULCHED GARDEN BED.
- MIX OF PLANTS**  
Dianella revoluta - Black Anther Lily  
Hardenbergia violacea - Native Sarsparilla  
Isotopsis nodosa - Knobby Club-rush  
Leucophyta brownii - Cushion Bush  
•PLANTED IN SMALL GROUPS OF 3, 2 OR SINGULAR POSITIONS WITHIN THE NOMINATED MULCHED GARDEN BED (UNLESS NOMINATED OTHERWISE).

GENERAL NOTES:

1. ALL TREE PLANTING HOLES HAVE BEEN EXCAVATED BY CIVIL WORKS
2. ALL IRRIGATION CONDUITS HAVE BEEN INSTALLED BY CIVIL WORKS
3. AMENITY WALL HAS BEEN CONSTRUCTED BY CIVIL WORKS. CARE AGAINST DAMAGE SHALL BE GIVEN
4. HIGH PRIORITY AGAINST ANY DAMAGES OR SOIL COMPACTION NEAR SIGNIFICANT TREES MUST BE GIVEN
5. ANY DAMAGES TO PRE-CONSTRUCTED SERVICES OR SURFACES AS A RESULT OF LANDSCAPE WORKS SHALL BE RECTIFIED AT OWN COST BY THE LANDSCAPE CONTRACTOR, TO THE SATISFACTION OF THE PRINCIPAL

PLANT SCHEDULE - HAMPSTEAD, MULLER, AND REGENCY ROAD INTERSECTION UPGRADE				QUANTITY		
PLANT CODE	PLANT SPECIES	POT SIZE	SPACING	SHEET 92	SHEET 93	TOTAL PER SPECIES
				TREES		
Ele	Eucalyptus leucoxylon - South Australian Blue Gum.	400mm	As shown	0	2	2
Elr	Eucalyptus leucoxylon 'Rosea' - Dwarf South Australian Blue Gum	400mm	As shown	7	9	16
Xau	Xanthorrhoea australis - Austral Grass Tree.	1000mm high	As shown	2	1	3
Xau	Xanthorrhoea australis - Austral Grass Tree.	750mm high	As shown	2	1	3
Xau	Xanthorrhoea australis - Austral Grass Tree.	500mm high	As shown	1	2	3
SHRUBS						
Lbr	Leucophyta brownii - Cushion Bush.	140mm	1000mm	164	174	338
GROUNDCOVERS						
Hvi	Hardenbergia violacea - Native Sarsparilla.	Tube	300mm	119	42	161
GRASSES						
Dre	Dianella revoluta - Black Anther Lily.	Tube	500mm	374	560	934
Ino	Isotopsis nodosa - Knobby Club-rush.	Tube	500mm	442	320	762
TOTAL PER SHEET				1111	1111	
TOTAL FOR PROJECT						2222



No.	AMENDMENT DESCRIPTION	BY	CHECK	ACCEPTANCE	DATE

100 MILLIMETRES ON ORIGINAL DRAWING

ALL DIMENSIONS ARE IN METRES UNLESS SHOWN OTHERWISE

Government of South Australia  
Department for Transport, Energy and Infrastructure

PROJECT No.: 14410  
DESIGN No.: 200XXXXX  
PROJECT START ROAD RUNNING DISTANCE: MCXX; CH 0000 = XX.XX km  
PROJECT END ROAD RUNNING DISTANCE: MCXX; CH XXXX = XX.XX km  
SCALES:  
5 0 5 10 15m

ROAD No. 5603/5612/5606  
**HAMPSTEAD ROAD**  
MULLER ROAD JUNCTION  
CH 220 - 340  
**LANDSCAPE**

DESIGNED: PH  
CHECKED: MA

DRAFTED: PH  
CHECKED: MA

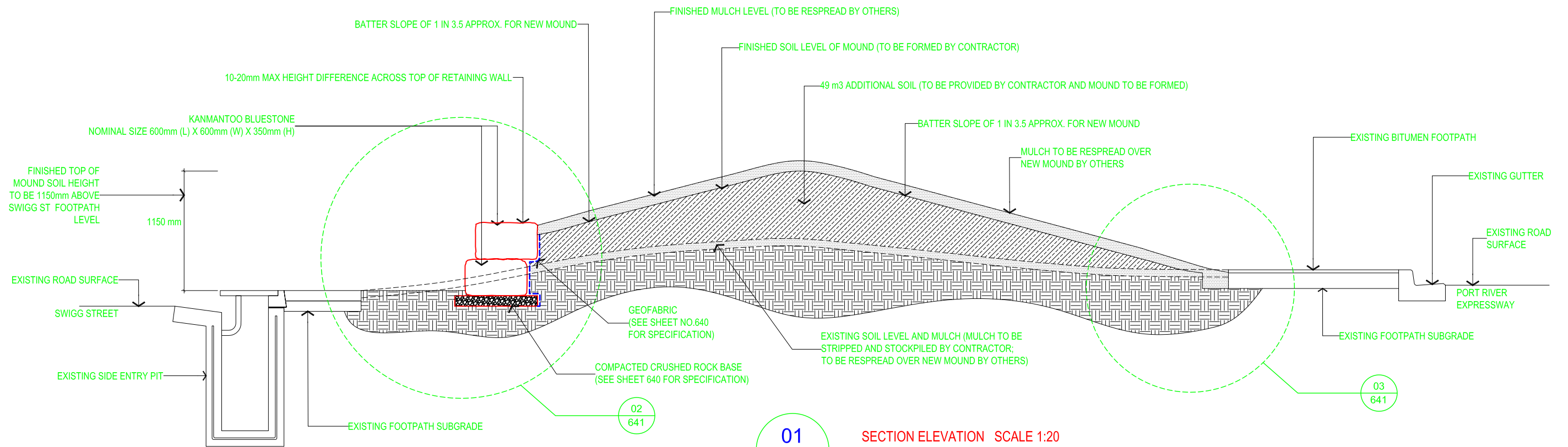
ACCEPTED FOR USE:  
L. GEORGE  
DATE: 15/07/2007

ACCEPTANCE FORM KNET No.: XXXXXXXXX  
IN ACCORDANCE WITH DP013

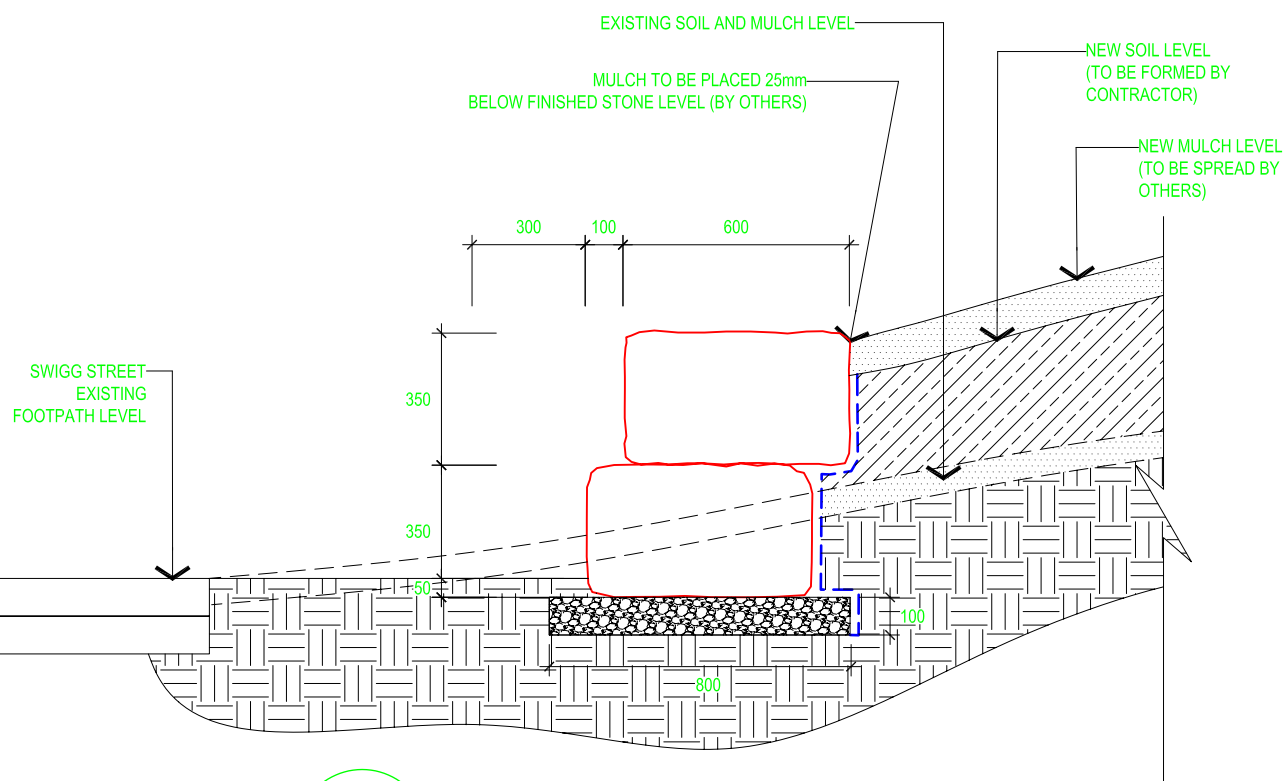
DRAWING No.: 1-2434  
SHEET No.: 92  
AMEND No.: -

UNCONTROLLED COPY WHEN PRINTED

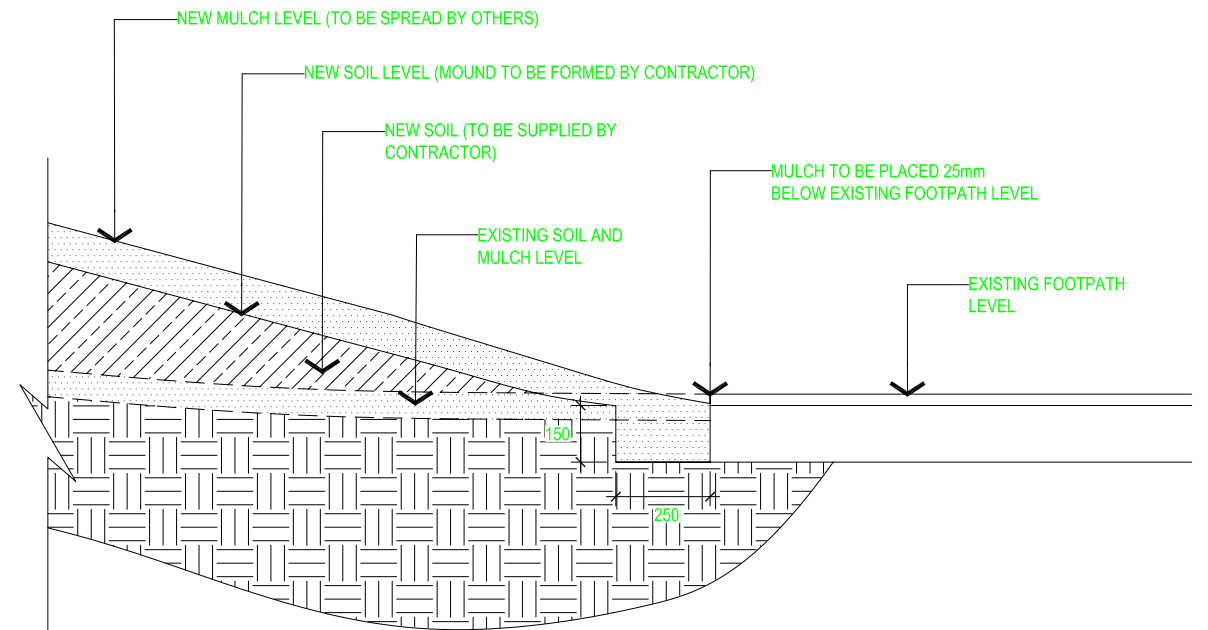
CAD FILE NAME: 2434\_SHT\_92.DWG



**01**  
**640** SECTION ELEVATION SCALE 1:20  
RETAINING WALL AND MOUND CONSTRUCTION



**02**  
**641** DETAIL ELEVATION SCALE 1:10  
RETAINING WALL CONSTRUCTION



**03**  
**641** DETAIL ELEVATION SCALE 1:10  
MOUND TO FOOTPATH EDGE CONSTRUCTION

No.	AMENDMENT DESCRIPTION	BY	CHECK	ACCEPTANCE	DATE

100 MILLIMETRES ON ORIGINAL DRAWING

ALL DIMENSIONS ARE IN METRES UNLESS SHOWN OTHERWISE



PROJECT No:	FILE No:
XXXXX	2009/02378/01
DESIGN No:	SURVEY No:
200XXXXX	20041173
PROJECT START ROAD RUNNING DISTANCE:	
MCXX; CH 0000 = XX.XX km	
PROJECT END ROAD RUNNING DISTANCE:	
MCXX; CH XXXX = XX.XX km	
SCALES:	
AS SHOWN	

**ROAD No. 5424**  
**PORT RIVER EXPRESSWAY**  
**STAGE 2 - PERKINS ROAD TO HEATH STREET**  
**CH 220 (SWIGG STREET)**  
**LANDSCAPE CONSTRUCTION**

DESIGNED:	DRAFTED:	ACCEPTED FOR USE:	ACCEPTANCE FORM KNET No.:	DRAWING No.:	SHEET No.:	AMEND No.:
DP	DP	X XXXXXXXXXXXXX	XXXXXXXXXX	1-6632	641	-
CHECKED:	CHECKED:	DATE: DD/MM/YYYY	IN ACCORDANCE WITH DP013	UNCONTROLLED COPY WHEN PRINTED		
MA	MA					

CAD FILE NAME: 6632\_SHT\_641.DWG