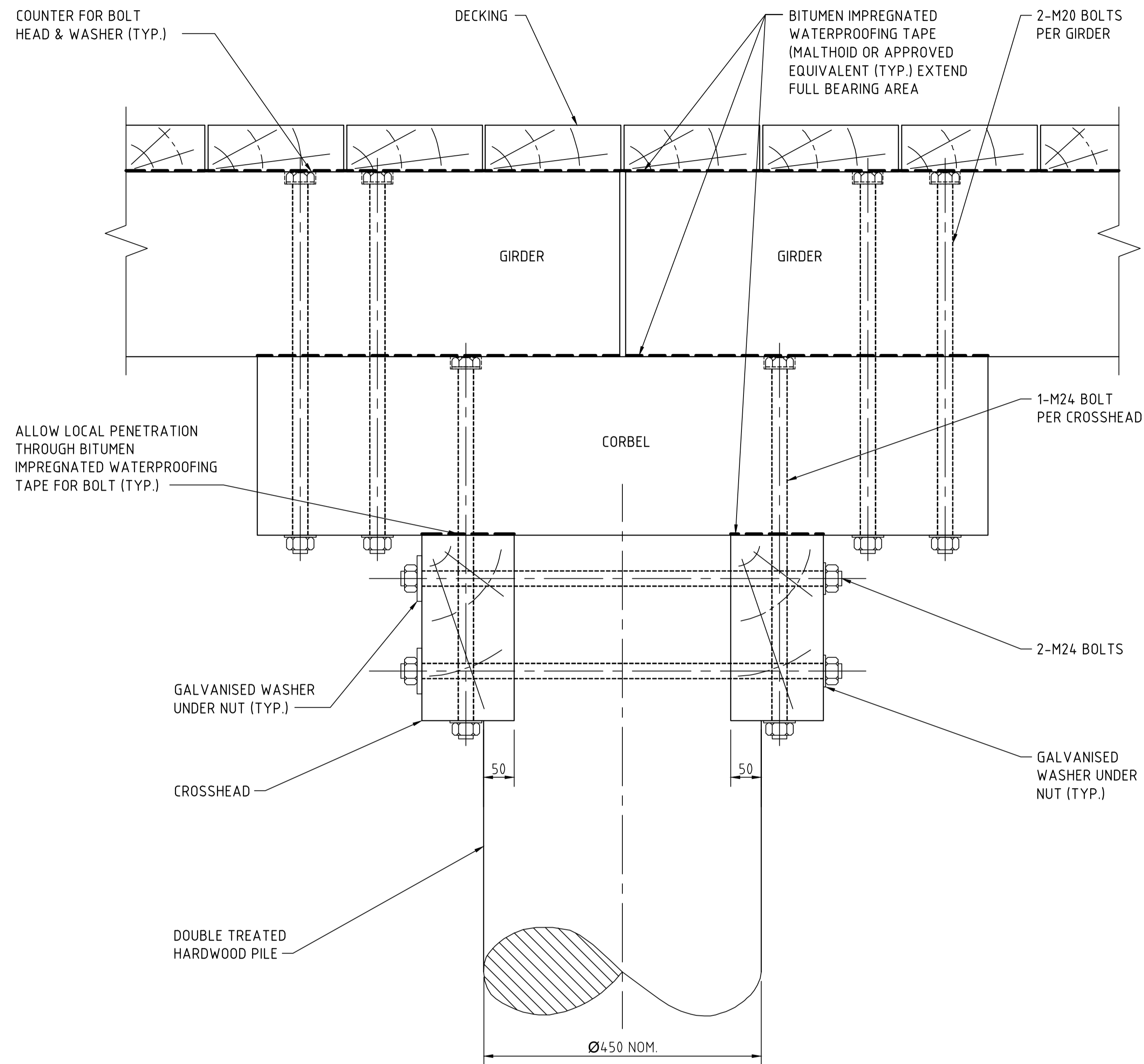
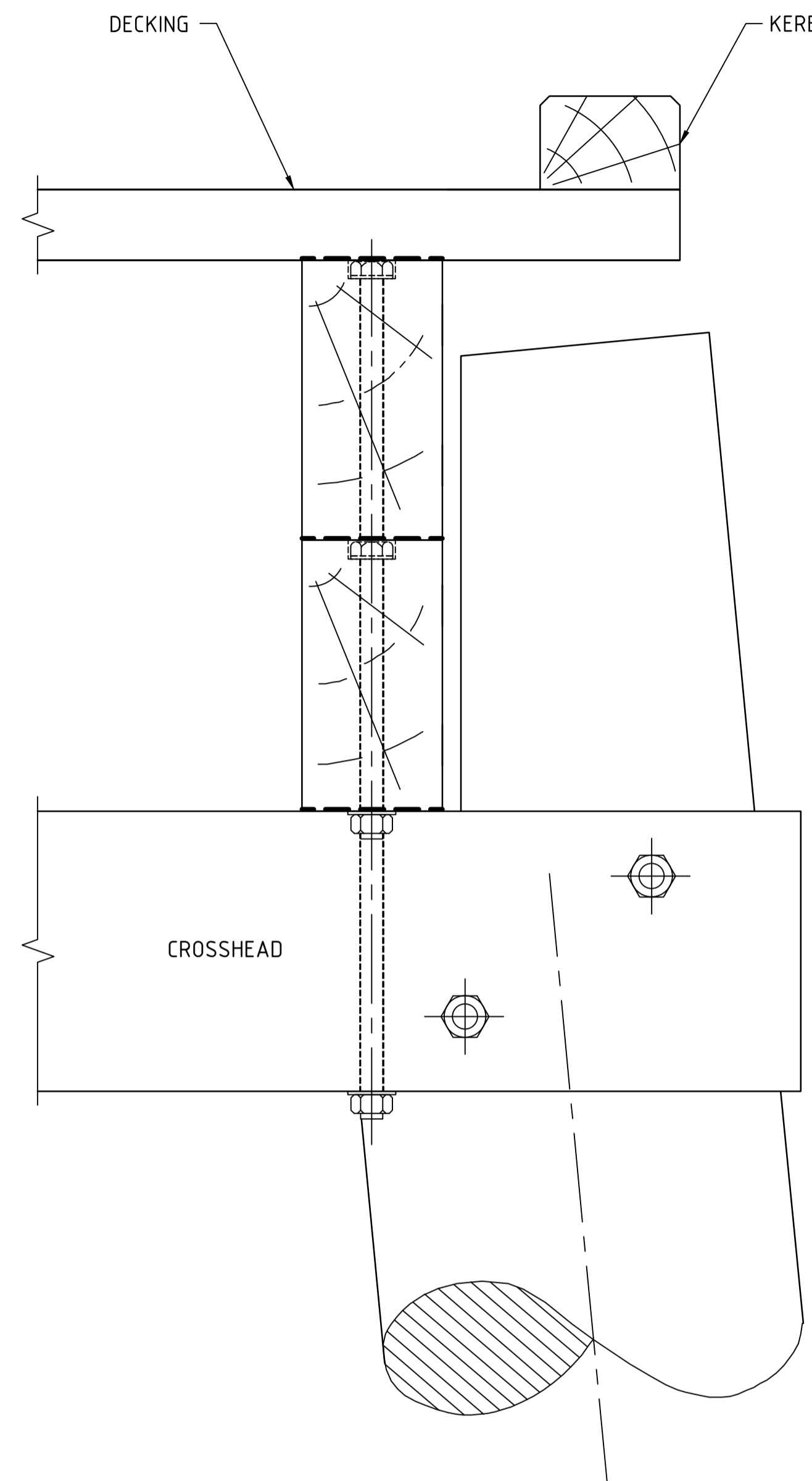


FILE: V:\2020\202200 - 202299\202246 - DIT - 2020-21 Jetty Remediation Projects\Drafting\Typ.DIT Jetty Construction Details\S-6997-8_2.dwg



ELEVATION
SCALE 1:5



SIDE ELEVATION
SCALE 1:5

NOTES:

GENERAL

1. NOTES TO BE READ IN CONJUNCTION WITH DIT SPECIFICATION.

MATERIALS

1. ALL NUTS TAPPED OVERSIZE TO SUIT GALVANISING.
2. ALL BOLTS, NUTS AND WASHERS SHALL BE GRADE 8.8 IN ACCORDANCE WITH AS 1252 AND BE HOT DIPPED GALVANISED IN ACCORDANCE WITH AS/NZS 4680 AND AS 1214.

FABRICATION

1. TOLERANCE ON DIMENSIONS SHALL BE 2mm. HOLES SHALL BE WITHIN 2mm OF THE POSITIONS AS DIMENSIONED.
2. ALL SHARP EDGES AND BURRS RESULTING FROM PUNCHING, CUTTING AND DRILLING SHALL BE REMOVED PRIOR TO GALVANISING.



DESIGNED	WGA
QUALIFICATION DATE:	
REVIEWER	DIT
QUALIFICATION DATE:	
INDEPENDENT DESIGN CERTIFIER (IF REQUIRED)	
QUALIFICATION DATE:	



Government of South Australia
Department for Infrastructure and Transport

STANDARD DRAWINGS
JETTY CONSTRUCTION

TYPICAL CONNECTION DETAILS - TIMBER PILE

DESIGNED: WGA	DRAFTED: WGA	ACCEPTED FOR USE: L.MASE	ACCEPTANCE FORM KNET No.:	DRAWING No.:	SHEET No.:	AMEND No.:
CHECKED: AJO	REVIEWED: DIT	DATE: 22/09/2023		S-6997	8	2
			LATITUDE:		LONGITUDE:	

PRELIMINARY DRAWING
NOT FOR CONSTRUCTION