

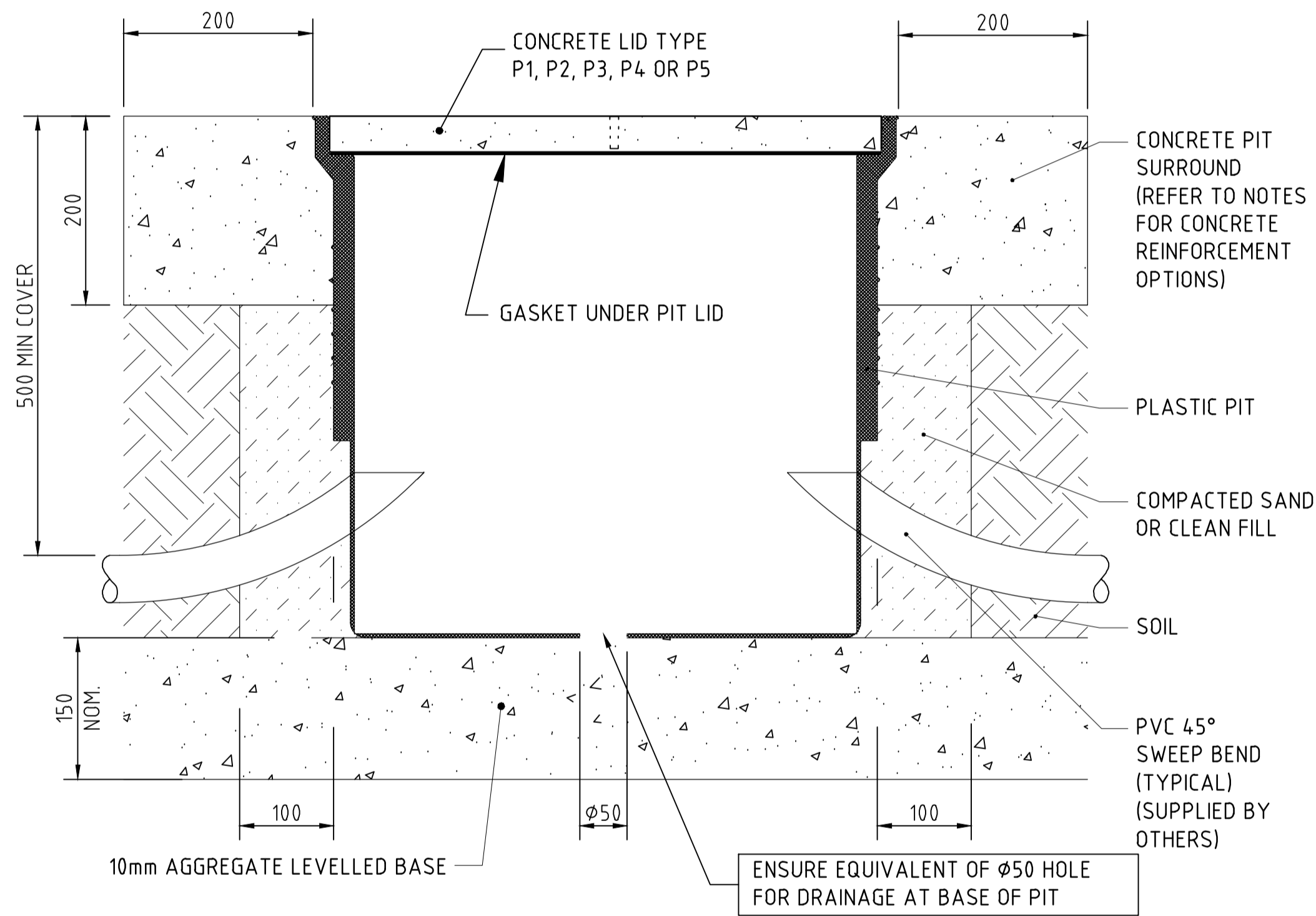
PIT TYPE	TYPICAL PIT DIMENSIONS (mm)					
	A	L	B	W	X	D
P1	472	419	195	155	45	360
P2	620	555	247	180	50	520
P3	730	665	296	240	55	577
P4	652	585	346	280	55	765
P5	650	580	405	320	55	575

NOTE: THESE DIMENSIONS ARE NOMINAL AND SHOULD BE CHECKED WITH ACTUAL PIT MANUFACTURER'S SPECIFICATIONS

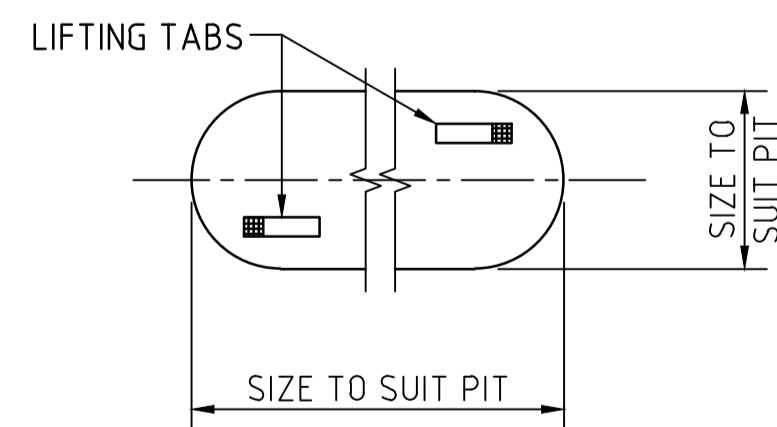
PLASTIC PIT (INJECTION TYPE) - DIMENSIONS

SCALE 1:10

NOTE: PLASTIC PITS ARE COMMERCIALY AVAILABLE PRODUCT INSTALLED AS PER THIS DRAWING AND MANUFACTURER'S RECOMMENDATIONS.



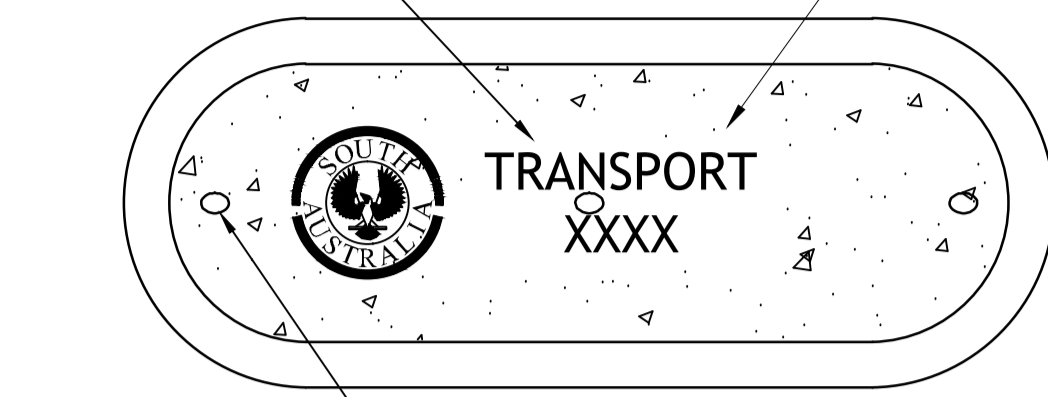
SECTION 1
SCALE 1:5



GASKET TO SUIT CONCRETE LIDS - TYPES P1 TO P5

NOTE: GASKET TO BE MADE FROM 3mm THICK CORFLUTE PLASTIC.

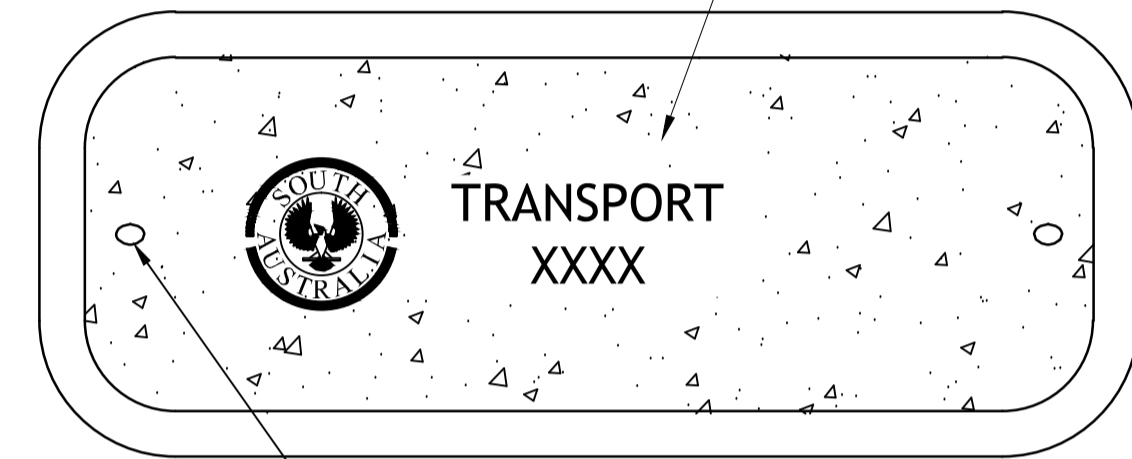
PIT DESCRIPTION EITHER - ELECTRICAL - COMMUNICATIONS - DETECTOR (P2)



2 SLOTTED HOLES FOR LIFTING - P2

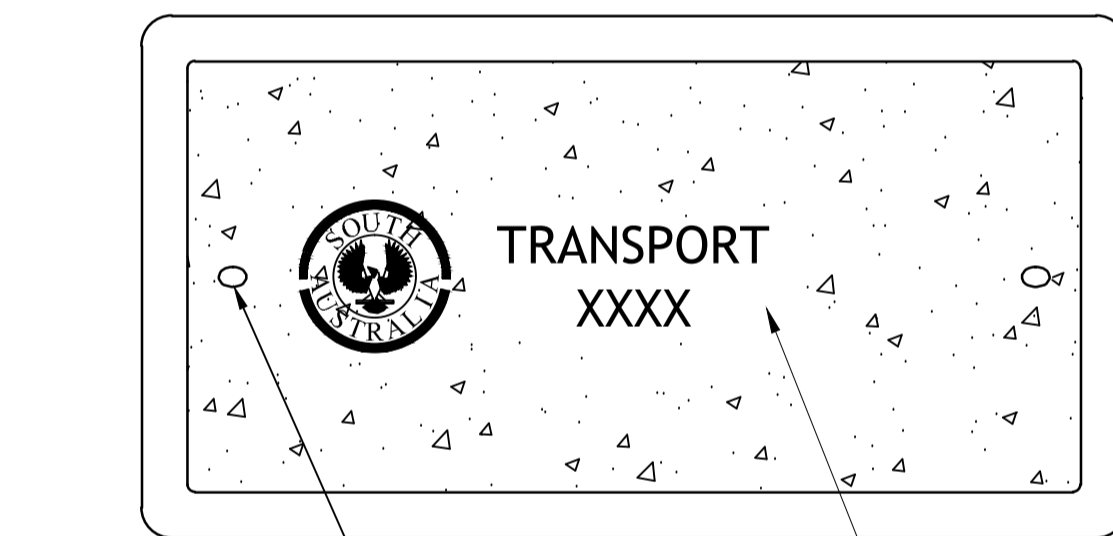
TYPE - P1 TO P2

PIT DESCRIPTION EITHER - ELECTRICAL - COMMUNICATIONS



2 SLOTTED HOLES FOR LIFTING

TYPE - P3



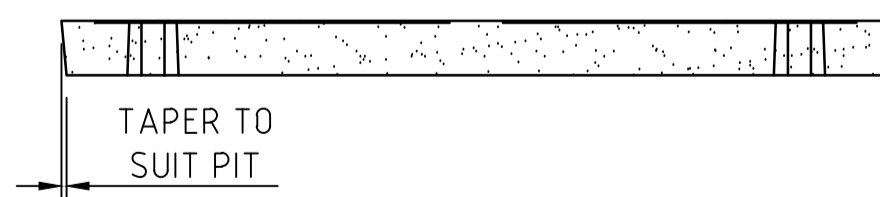
2 SLOTTED HOLES FOR LIFTING

TYPE - P4 TO P5

CONCRETE LID DETAIL

NOT TO SCALE

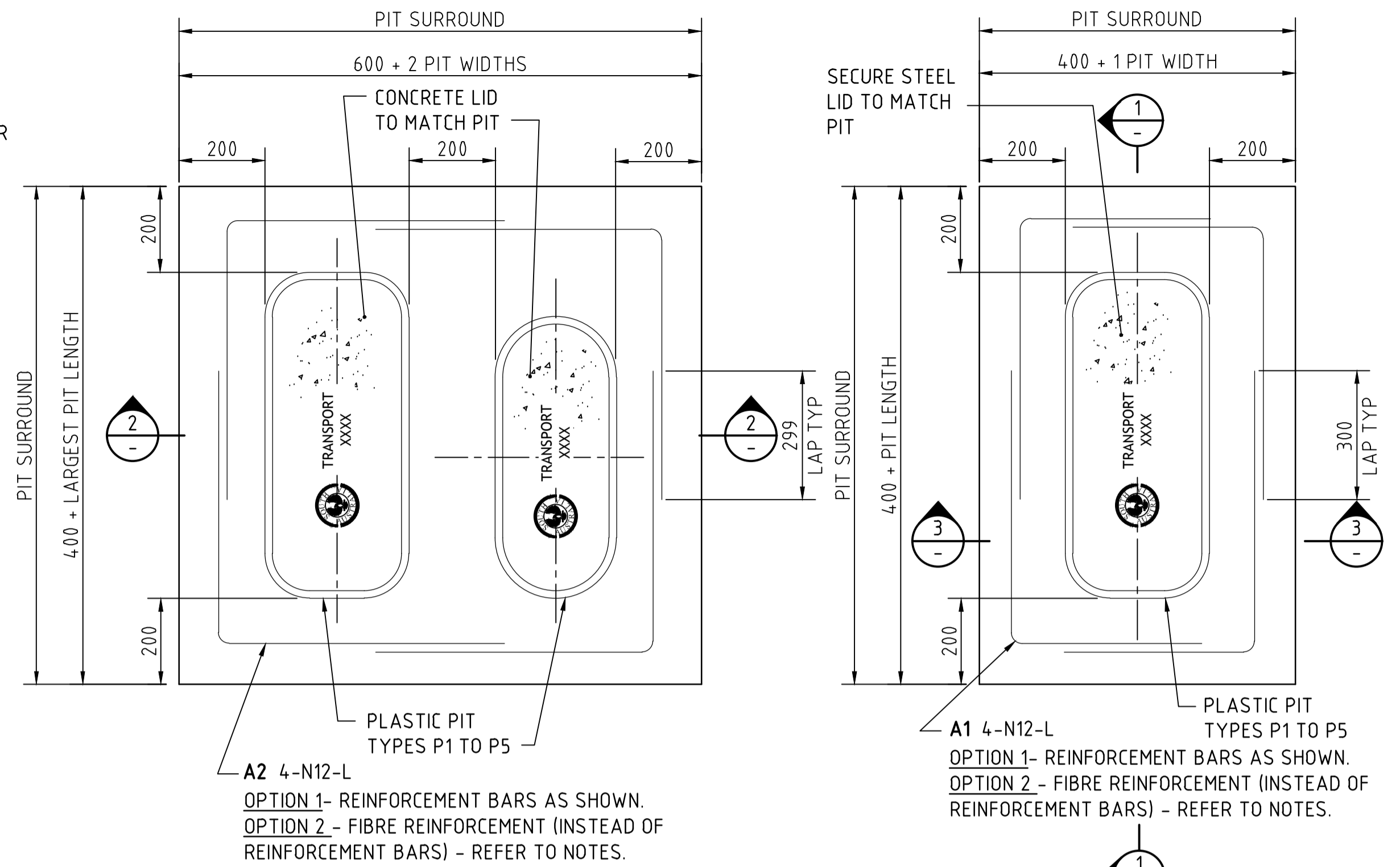
NOTE: CONCRETE LIDS ARE A COMMERCIALY AVAILABLE PRODUCT SUPPLIED BY OTHERS. LID TO BE MANUFACTURED TO SUIT APPROPRIATE PIT. CONCRETE LIDS TO BE STAMPED WITH NON SLIP PATTERN, SA LOGO, & PIT DESCRIPTION SEE CONCRETE LID DETAIL. TEXT HEIGHT TO BE 25mm AND GOV. OF SA LOGO TO BE 100mm IN DIAMETER



TYPICAL SIDE ELEVATION - CONCRETE LIDS

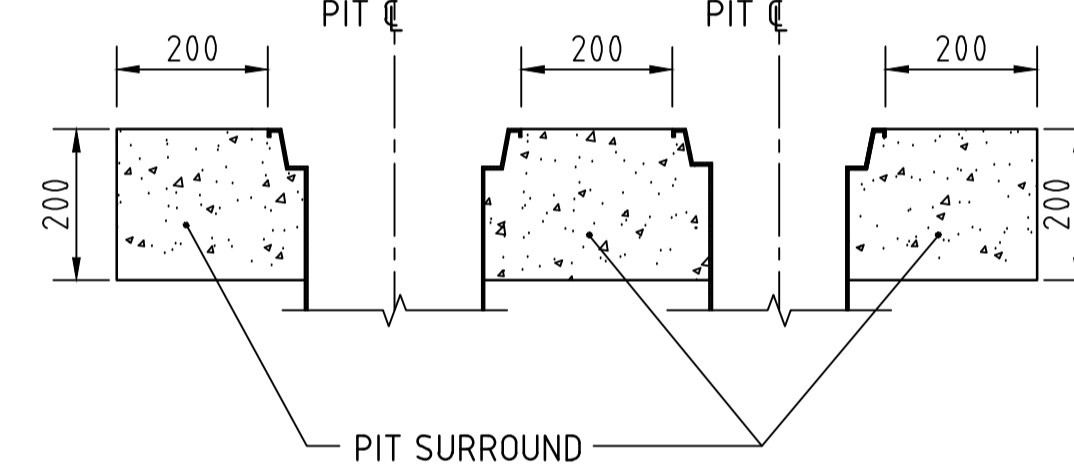
NOT TO SCALE

NOTE: PIT LID TO SIT FLUSH WITH PIT AND SURROUNDS ALLOWING FOR THICKNESS OF GASKET

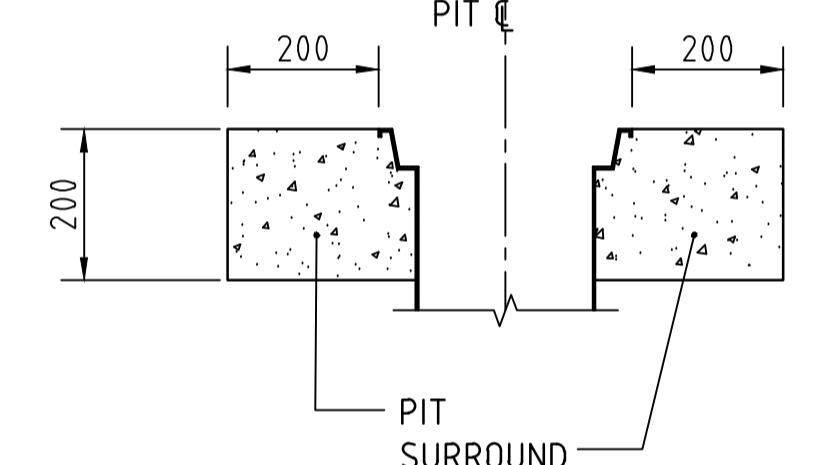


DOUBLE PIT REINFORCED CONCRETE PIT SURROUNDS - OPTIONS 1 AND 2

NOT TO SCALE



SECTION 2
NOT TO SCALE



SECTION 3
NOT TO SCALE

NOTES

- GENERAL**
- NOTES TO BE READ IN CONJUNCTION WITH DPTI MASTER SPECIFICATION.
 - REINFORCED CONCRETE SURROUND IS REQUIRED WITH ALL PIT INSTALLATIONS IRRESPECTIVE OF EXISTING GROUND SURFACE CONDITION.
 - BACKFILL AROUND PIT WITH SAND (REFER DPTI MASTER SPECIFICATION) & COMPACT TO 90% MODIFIED COMPACTION.
 - CONDUIT ENTRY SHALL BE SEALED INSIDE AND OUT WITH APPROVED SEALANT.
 - LIDS TO BE MANUFACTURED TO MATCH SILL DIMENSIONS OF THE REQUIRED PIT.
- REINFORCED CONCRETE SURROUND OPTIONS**
- OPTION 1 - STEEL REINFORCEMENT AS PER DETAIL ON THIS SHEET.**
- COVER TO REINFORCEMENT: 100mm AGAINST SOIL & PIT.
 - MINIMUM LAP 25 DIA FOR 500N BARS, UNO.
 - REINFORCING BAR SHALL BE GRADE D500N IN ACCORDANCE WITH AS/NZS4671. STANDARD HOOKS AND BENDS SHALL BE IN ACCORDANCE WITH AS 3600.
 - CONCRETE SHALL BE GRADE N32 MINIMUM, WITH MAXIMUM SLUMP OF 80mm.
- OPTION 2 - FIBRE REINFORCEMENT**
- CONCRETE SHALL BE IMPREGNATED WITH 'FORTA FERRO' OR ALTERNATIVE APPROVED FIBRE PRODUCED FROM 100% VIRGIN COPOLYMER/POLYPROPYLENE. DOSAGE RATE FOR 'FORTA FERRO' IS 5kg/m³ OF CONCRETE MIX. FIBRE TOUGHNESS RE 3% TO BE AT LEAST 40%.
 - CONCRETE SHALL BE GRADE N32 MINIMUM, WITH MAXIMUM SLUMP OF 80mm. THE CONCRETE MIX TO BE DESIGNED FOR SPECIFIC FIBRE USED.

Government of South Australia
Department of Planning, Transport and Infrastructure

STANDARD DRAWING
ELECTRICAL ASSETS
ELECTRICAL SERVICES AND COMMUNICATION
PLASTIC PITS, NON-SECURED CONCRETE LIDS & SURROUNDS

DESIGNED: AP	DRAFTED: MD	ACCEPTED FOR USE: PHIL MOLLOY	ACCEPTANCE FORM KNET No.:	DRAWING No.:	SHEET No.:	AMEND No.:
CHECKED: AP	REVIEWED: PM	MGR, ENGINEERING SERVICES DATE: 01/12/2015	9973285	S - 4055	66	0
			LATITUDE: N/A		LONGITUDE: N/A	

THIS SHEET SUPERSEDES SHEETS 59 TO 62